
Volleyball Programs

Volleyball

10-2-2015

Cedarville vs. Kentucky Wesleyan

Cedarville University

Follow this and additional works at: https://digitalcommons.cedarville.edu/volleyball_programs



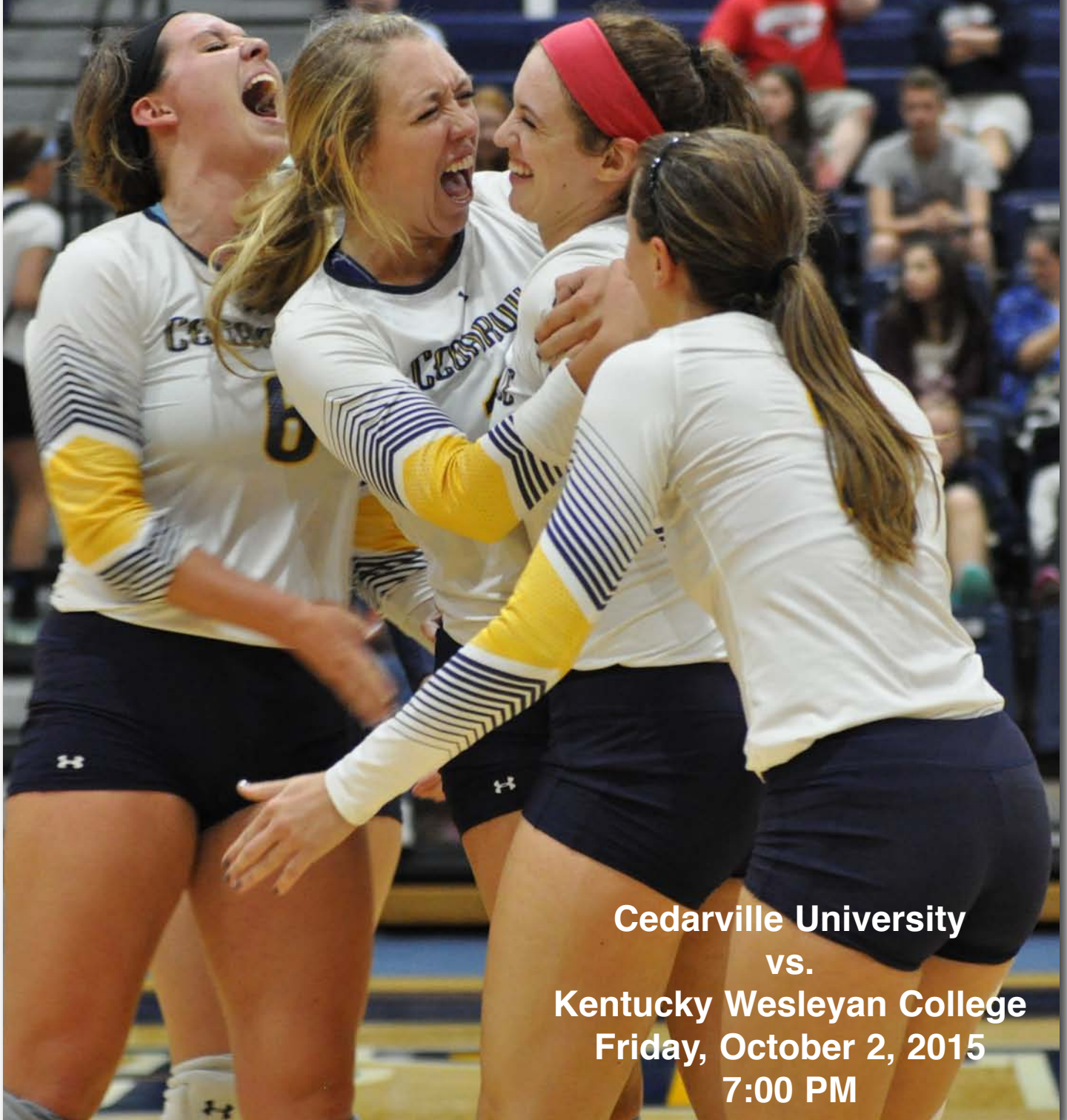
Part of the [Higher Education Commons](#), and the [Sports Studies Commons](#)

Recommended Citation

Cedarville University, "Cedarville vs. Kentucky Wesleyan" (2015). *Volleyball Programs*. 32.
https://digitalcommons.cedarville.edu/volleyball_programs/32

This Program is brought to you for free and open access by DigitalCommons@Cedarville, a service of the Centennial Library. It has been accepted for inclusion in Volleyball Programs by an authorized administrator of DigitalCommons@Cedarville. For more information, please contact digitalcommons@cedarville.edu.

MATCH DAY



Cedarville University
vs.
Kentucky Wesleyan College
Friday, October 2, 2015
7:00 PM

Lady Jacket Volleyball Blog

September 29, 2015

How do you cope when something you love to do becomes something you have to do? That is what I, like many other college athletes, have been struggling with lately. God has distributed talents to us for a specific purpose. Furthermore, He provided a way for us to continue our athletic careers on the collegiate level. So then, why isn't it always fun anymore? I think the main reason is that it's just plain hard. It's hard to constantly be pushing our bodies to the limit, to be sore, to be tired, and to always be on top of our game. Secondly, it's stretching emotionally. Both winning and losing can take their toll. When we win it's difficult not to become prideful and self-centered. When we lose it's hard to not feel that weight on our shoulders or not to dwell on our mistakes. Thirdly, it can become incredibly stressful. When we have exams, group projects, friends, and a desire to sleep, practices and games seem to take up more time than usual. I guess the real question is then: what can we do to fix it? For that I've come up with a few solutions:

First and foremost, take it to the Lord. When going through these struggles I see the Lord pulling me to Himself. He wants to bring me peace in times of trial and take the burden off of my shoulders. All I need to do is let Him. Through reading His word and being in constant communication with Him I can feel that peace manifesting itself. Paul makes a great statement in II Corinthians 12:9, "He said to me, 'My grace is sufficient for you, for my power is made perfect in weakness.' Therefore I will boast all the more gladly of my weaknesses, so that the power of Christ may rest upon me." It is true that when I am weak He is strong.

Another method that's also helped me in conquering this feeling is simply gaining perspective on our purpose for playing. We don't play for ourselves, but instead to spread the gospel and the love of Christ to our opponents. We also play for our teammate's success. To perform at a high level as a team, we have to be thinking about the person next to us on the court instead of ourselves. With a team that loves each other as much as ours does, thinking of my teammates is one of the easier things to do.

Lastly, it is important to remember why we love the game. When I first started playing volleyball it was all I wanted to do. I'd be outside for hours just hitting the ball up against my garage until it was too dark to see. Even in college when I'm not in season I take every opportunity that I can to play volleyball. Every part of it excites me, from the strategic aspects to the physical performance. I absolutely love this game, sometimes I just forget.

I know I am not the only athlete that has ever dealt with this, and I most certainly am not the last. I hope what I had to say can be helpful for those of you trying to understand or for those struggling as well. As I'm coming out on the other side of the tunnel, we can begin to focus on what has happened and what is to come. Cedarville Volleyball is now 2-0 in the G-MAC! WOO! We managed to beat a scrappy Alderson Broaddus team in four sets and a tenacious D&E team in three. Abby Shelton also had a career high of 26 kills during our AB match...way to go Abby! These results plus a W from the Urbana game Tuesday puts our squad at 6-8. This coming week we have another set of three home games including USI, Kentucky Wesleyan, and Trevecca Nazarene. These will be tough matches, but we have been working hard in the gym to prepare. With a team like mine, we have the potential to do great things on the court this week. Please be praying that we are able to do our best this week and love what we do.

Have a great week!

Rachel Krikke is a junior at Cedarville University from North Royalton, Ohio and is a Dean's List student majoring in business.

Read the blogs from other Yellow Jacket student-athletes at 2015-16 Blog Central. Go to:

yellowjackets.cedarville.edu



@rachel_krikke

SUPPORTING YOUR TEAM ON AND OFF THE FIELD



Pictured from left to right:
Ryan Chamberlin, AT; Shila Obee, AT;
Justin Stanfill, AT; Aaron Bair, AT, CSCS;
Michael Willets, MS, AT

Your Ohio Valley Team of Professionals:
Medical Director: Ian Thompson, M.D., M.S., F.A.A.O.S.
Director of Sports Medicine: Michael Willets, MS, AT
Aaron Bair, AT, CSCS; Ryan Chamberlin, AT;
Shila Obee, AT; Justin Stanfill, AT;
Noshir Deboo, MD; John Dobson, MD;
David Galluch, MD; Tarsem Garg, MD;
Lance Tigyer, DO; Kevin Zartman, MD; Philip Cain, DPM;
Donald LeMelle, DPM; David Anon PT, DPT, AT;
Megan Chojnacki, PT, MPT; Wade Rice, PT, DPT, CSCS;
Terrie Wilborn-Halverson, PT, DPT

OHIO VALLEY sports medicine

- Athletic Training & Injury Prevention
- Certified Concussion Management & Testing
 - Sports Performance Enhancement
 - Walk-In Clinic
 - Sports Injury Helpline
- Pupil Activity Program (PAP) Certification Training
 - CPR Training

Sports Injury Helpline
937-521-4960

Call our Sports Injury
Helpline for access
to a sports medicine
professional



2015 Schedule/Results



(7-8 Overall, 2-0 G-MAC)

& Northern Michigan Open; Marquette, MI
+ Findlay Invitational; Findlay, OH
% Midwest Region Crossover; Aurora, IL

Sept. 4	vs. Fort Hays State &	Marquette, MI	L 1-3
Sept. 4	at Northern Michigan &	Marquette, MI	L 1-3
Sept. 5	vs. Lake Superior State &	Marquette, MI	W 3-0
Sept. 5	vs. Michigan Tech &	Marquette, MI	L 1-3
Sept. 8	INDIANAPOLIS	Cedarville, OH	W 3-2
Sept. 11	vs. Pitt-Johnstown +	Findlay, OH	L 1-3
Sept. 11	vs. Mercyhurst +	Findlay, OH	L 0-3
Sept. 12	vs. Hillsdale +	Findlay, OH	L 1-3
Sept. 12	at Findlay +	Findlay, OH	L 0-3
Sept. 15	at Malone	Canton, OH	L 1-3
Sept. 18	CHARLESTON	Cedarville, OH	W 3-0
Sept. 22	URBANA	Cedarville, OH	W 3-0
Sept. 25	ALDERSON BROADDUS*	Cedarville, OH	W 3-1
Sept. 26	DAVIS & ELKINS*	Cedarville, OH	W 3-0
Sept. 29	SOUTHERN INDIANA	Cedarville, OH	W 3-1
Oct. 2	KENTUCKY WESLEYAN*	Cedarville, OH	7 PM
Oct. 3	TREVECCA*	Cedarville, OH	1 PM
Oct. 6	URSULINE*	Cedarville, OH	7 PM
Oct. 13	at Central State	Wilberforce, OH	7 PM
Oct. 16	vs. TBA %	Aurora, IL	12 PM
Oct. 16	vs. TBA %	Aurora, IL	7 PM
Oct. 17	vs. TBA %	Aurora, IL	2 PM
Oct. 23	at Salem International*	Salem, WV	6 PM
Oct. 24	at Ohio Valley*	Vienna, WV	1 PM
Oct. 27	at Bellarmine	Louisville, KY	7 PM
Oct. 30	at Trevecca*	Nashville, TN	7 PM
Oct. 31	at Kentucky Wesleyan*	Owensboro, KY	2 PM
Nov. 3	INDIANA EAST	Cedarville, OH	7 PM
Nov. 4	at Ursuline*	Pepper Pike, OH	7 PM
Nov. 10	KENTUCKY STATE	Cedarville, OH	7:30 PM
Nov. 14	vs. Charletson	Wheeling, WV	3 PM
Nov. 14	at Wheeling Jesuit	Wheeling, WV	5 PM
Nov. 19	G-MAC Tournament	Mason, OH	TBA
Nov. 20	G-MAC Tournament	Mason, OH	TBA
Nov. 21	G-MAC Tournament	Mason, OH	TBA

* Great Midwest Athletic Conference
All Starting Times Eastern
Home matches in **BOLD ALL CAPS**

All home matches live video streamed on Stretch Internet



Tonight's Match

The Cedarville University women's volleyball team hosts the Kentucky Wesleyan College Panthers tonight in Great Midwest Athletic Conference action in the Callan Athletic Center as part of Homecoming Weekend.

Cedarville, under the direction of eighth-year Head Coach Doug Walters (165-114), enters tonight's match with a 7-8 record (2-0 G-MAC) and a five-match home winning streak including a 3-1 victory over visiting Southern Indiana on Tuesday.

Kentucky Wesleyan is 1-10 on the season and begins conference play with tonight's contest with CU. KWC's most recent action was a 3-2 win at Bellarmine last Saturday.

Four juniors continue to pace the Lady Jackets after 15 matches of the 2015 season. Outside hitter Abby Shelton leads the offensive attack with 205 kills and 3.80 kills per set. Rachel Krikke, a 6-1 middle hitter coming off a career-high 15 kills versus USI, tops the squad with a .361 attack pct.



Abby Shelton

Sophomore Krissy Pratt is second with 147 kills and tied for a team-high 21 aces in the aggressive CU serving attack.

Libero Angela Becker, paces the back row with 212 digs while setter Kristin Cardwell has handed out 405 assists and is tied with Pratt in serving aces.

Head Coach Eric Hagan is in his second season (17-23) at KWC after serving four years as an assistant.

Nikki Jenkins, a 5-11 senior outside hitter, leads the Panthers with 84 kills and 2.33 kills per set.



Nikki Jenkins

Sophomore setter Courtney Gildea runs the KWC offense while rookie Nicole Venema leads the back line with 124 digs.

CU owns a 6-2 lead in the all-time series with the Panthers. The Lady Jackets swept all three matches with KWC in 2014 including a 3-0 verdict in the G-MAC semifinals in Cedarville on November 14.

Last Time on the Court - 9/29/15

CEDARVILLE, Ohio - Cedarville picked up a key Midwest Region victory by taking down Southern Indiana before a boisterous 'Beach Night' crowd at the Callan Athletic Center.

The hosts stunned the Screaming Eagles 16-25, 25-19, 26-24, 25-20 to win for the fifth straight time and improve to 7-8. USI drops to 10-3.

The visitors dominated the first set, but the Jackets got back into the match by pulling away midway through the second to knot the contest heading into a 10-minute break.

A nip-and-tuck third set ended on back-to-back kills by Taylor Wilkerson and Krissy Pratt.

Cedarville broke away for a 13-7 margin in the fourth set and USI never got closer than three points the rest of the way.

Rachel Krikke pounded a career-high 15 kills with four blocks. Pratt added 14 kills with three blocks while Abby Shelton chipped in 13 kills.

Kristin Cardwell handed out 47 assists - one shy of her career-high - to go along with 15 digs. Angela Becker totaled 15 digs and received 22 serves without an error.

Numbers Game:

- CU posted a .412 attack percentage in the fourth set.
- Freshman Abby Woodard contributed a season-high 10 digs.
- Becker is 177-of-179 (.989) in serve receptions in her last 7 matches.
- In the last four outings, Cardwell is averaging 11.64 assists per set.
- Krikke's previous career-high for kills was 11 at Malone on Sept. 15.
- The Jackets have had three straight matches of 15 or more block assists.



After the match
great meals are
waiting for you
in Beaver Creek!

It is our pleasure and intention to cater your meeting, event, or party with the same fresh food served hot or cold which ever you prefer.

We will be on time and ready to make your event a success.

Looking forward to serving you!
Visit our website today or find us on Facebook.
On line ordering is now available.

Beaver Creek Free Standing Unit
2360 North Fairfield Road
Beaver Creek, Ohio 45431
937.320.1228

The Mall at Fairfield Commons
2727 North Fairfield Road
Beaver Creek, Ohio 45431
937.320.1224

www.cfarestaurant.com/beaver creek/home

www.cfarestaurant.com/fairfieldcommons/home

Head Coach Doug Walters



Doug Walters has been the head volleyball coach at Cedarville University since 2008. He is the sixth head coach in the program's history.

The Lady Jackets have posted 157 victories during Walters' seven-year tenure. The list of honors includes the 2008 NCCAA championship as well as three consecutive Great Midwest Athletic Conference crowns in 2012, 2013, and 2014.

During the school's first active season in NCAA Division II in 2012, his squad rolled to a 32-6 overall mark and was a perfect 8-0 in the G-MAC. Cedarville went on to win the inaugural G-MAC Tournament and Walters was ultimately voted the league's Coach of the Year.

The Jackets, who finished 23-14 overall in 2013, repeated the feat after sharing the league's best regular season record at 12-2. They went on the road to claim their second straight G-MAC Tournament trophy.

Then, in 2014, CU made it a three-peat after rolling through the league schedule with a 10-1 regular season mark. The Jackets hosted the G-MAC Tournament as the #1 seed and locked down their third straight title to finish 20-13.

Walters' first season with the Lady Jackets in 2008 was a memorable one as he guided the program to its third National Christian College Athletic Association title in four years. He was tabbed the NCCAA National Coach of the Year.

Cedarville finished with a 27-12 record overall that season and tied for fourth place out of 15 teams in the American Midwest Conference with a 10-4 mark. The Lady Jackets qualified for the AMC Tournament and advanced to the semifinals.

Despite going 15-23 overall in 2009, the Lady Jackets were the #2 seed in the AMC Tournament after going 8-4 in the league. The Jackets were 18-20 and 6-4 AMC in 2010 while advancing to the semifinals of the conference tournament.

Cedarville finished with a 22-18 mark in 2011 during the school's NCAA provisional year and was the No. 1 seed in the Ohio Independent Championship Tournament.

Walters came to Cedarville after assembling a 128-73 record in nine years of high school coaching in southern Ohio. He spent his last two seasons at the prep level at Milford High School, a Division I program near Cincinnati.

Walters previously spent seven years building Eastern High School in Sardinia into one of the top Division III programs in Ohio. The Warriors, who were ranked in the state's Top 10 in three different seasons, won four conference titles, two sectional championships, and were the district runner-up once. He was a four-time conference Coach of the Year and saw eight players continue their careers at the collegiate level.

Walters was founder and former director of the Greater Miami Volleyball Club. The GMVC was started in 2003, was a Junior Olympic organization, and was recognized as one of the top regional clubs in the Cincinnati area.

Walters continues to be involved at the club level. He is a National Team Coach for the Elevation Volleyball Club based out of Mason, Ohio.

Additionally, Walters is the volleyball chair of the Great Midwest Athletic Conference. He is also the chair of the NCAA Division II Women's Volleyball Midwest Regional Advisory Committee and serves on the Division II Women's Volleyball National Committee.

Walters is a 1997 graduate of Northern Kentucky University and he earned his master's degree from the University of Dayton in 2003. Doug and his wife, Angela, reside in Morrow, Ohio with their daughter Caitlyn, 13.

Lady Jacket Profiles



Kristen Cardwell
5-7 • Junior • Setter
Massillon, OH
Jackson High School

#2

Kristin Cardwell is in her third campaign with the Lady Jacket volleyball team....only player to appear in all 33 matches and all 122 sets during the 2014 season....handed out a second-best 582 assists and ranked fourth with 33 service aces.....tallied a fifth-best 168 digs.....established a new career-high of 27 assists in a Great Midwest Athletic Conference (G-MAC) five-set win at Ursuline....posted double figure assists in 31 of the 33 matches.....notched a career-high 15 digs in a four-set loss at California PA.....produced double figures in digs in four other matches.....drilled four aces in matches versus Caldwell, Northern Michigan and Salem International.....ranked ninth in the G-MAC with 4.77 assists per set.....member of the G-MAC Academic Team.

2013 - One of seven players to see action in all 37 matches and one of just three to appear in all 136 sets.....ranked second on the squad with 514 assists and 47 service aces.....added 162 digs to the Lady Jacket defense.....posted season-high 25 assists in matches at Ohio Dominican and versus Indianapolis.....registered double figures in assists in 30 matches including six consecutive at the end of the season.....recorded a season-high 14 digs a five-set Great Midwest Athletic Conference (G-MAC) loss to Kentucky Wesleyan.....added 11 digs at ODU and 10 digs at Malone.

High School - Four-year letter winner and three-year starter at Jackson High School.....team advanced to the 2012 Ohio Division I State Tournament Championship match.....squad finished 28-2.....ranked#3 in Final OHSVCA Division I Poll.....captured regional banner in 2012.....three-time sectional champions.....2011 Federal League champions.....named to the All-Ohio Division I Third Team as a senior.....District 4, Stark County and Federal League Player of the Year.....led team to a 79-7 record during three years as setter at Jackson.....club experience with Ohio Extreme Volleyball.....earned District 4, Stark County and Federal League First Team recognition as a junior.....District 4, Stark County honorable mention and Federal League Second Team honoree as a sophomore.....earned President's Award for Academic Excellence.....National Honor Society student.

Personal - Dean's honor list student as an early childhood education major at Cedarville University.....born 1/25/95 in Akron, OH.....daughter of Ron and Debbie Cardwell.....older brother, Steve, is a CU graduate and was a member of the Yellow Jacket baseball team.

FOLLOW THE YELLOW JACKETS

Keep up with Lady Jacket volleyball on the Internet by logging onto the Cedarville University sports information homepage. The address is yellowjackets.cedarville.edu and the site includes the schedule, roster, game statistics, cumulative stats, game recaps and photos, video highlights, interviews with coaches and players plus other special video features.



Fans can follow Cedarville University Athletics on social media. Become a fan on Facebook, Instagram, Twitter or YouTube. Sign up using the links on the sports information website. Look for the graphics in the bottom right corner of the front page.

Great Midwest Athletic Conference - Volleyball



Alderson Broaddus (6-10)		
9/4	vs. Seton Hall	L 1-3
9/4	vs. Lake Erie	L 0-3
9/5	vs. Walsh	W 3-2
9/5	at Indiana PA	L 0-3
9/9	POINT PARK	W 3-0
9/11	vs. Southern Indiana	L 1-3
9/11	vs. Bluefield W 3-0 (forfeit)	
9/12	vs. Concord	W 3-0
9/12	vs. Shippensburg	L 0-3
9/15	at Lake Erie	L 1-3
9/16	at Notre Dame OH	L 1-3
9/19	CALIFORNIA PA	L 0-3
9/22	at Slippery Rock	W 3-2
9/25	at Cedarville*	L 1-3
9/26	at Ursuline*	W 3-1
9/29	at Fairmont State	L 1-3
10/3	at Lock Haven	3 PM
10/3	vs. Millersville	5 PM
10/6	DAVIS & ELKINS*	6 PM
10/9	TREVECCA*	6 PM
10/10	KY WESLEYAN*	1 PM
10/14	PITT-JOHNSTOWN	7 PM
10/24	vs. Lake Superior St.	3:30 PM
10/24	at Malone	6 PM
10/27	WALSH	6 PM
10/30	SALEM INTL.*	6 PM
10/31	OHIO VALLEY*	12 PM
11/4	at Davis & Elkins*	7 PM
11/7	URBANA	3 PM
11/10	CHARLESTON	6 PM
11/13	at Ohio Valley*	5 PM
11/14*	at Salem Intl.*	1 PM

* Great Midwest Athletic Conference



Cedarville (7-8)		
9/4	vs. Fort Hays State	L 1-3
9/4	at Northern Michigan	L 1-3
9/5	vs. Lake Superior St.	W 3-0
9/5	vs. Michigan Tech	L 0-3
9/8	INDIANAPOLIS	W 3-2
9/11	vs. Pitt-Johnstown	L 1-3
9/11	vs. Mercyhurst	L 0-3
9/12	vs. Hillsdale	L 1-3
9/12	at Findlay	L 0-3
9/15	at Malone	L 1-3
9/18	CHARLESTON	W 3-0
9/22	URBANA	W 3-0
9/25	ALD. BROADDUS*	W 3-1
9/26	DAVIS & ELKINS*	W 3-0
9/29	SO. INDIANA	W 3-1
10/2	KY WESLEYAN*	7 PM
10/3	TREVECCA*	1 PM
10/6	URSULINE*	7 PM
10/13	at Central State	7 PM
10/23	at Salem Intl.*	6 PM
10/24	at Ohio Valley*	1 PM
10/27	at Bellarmine	7 PM
10/30	at Trevecca*	7 PM
10/31	at KY Wesleyan*	2 PM
11/3	INDIANA EAST	7 PM
11/4	at Ursuline*	7 PM
11/10	KENTUCKY ST.	7:30 PM
11/14	vs. Charleston	3 PM
11/14	at Wheeling Jesuit	5 PM

* Great Midwest Athletic Conference



Davis & Elkins (2-11)		
9/4	vs. Wilmington DE	L 0-3
9/4	at Shippensburg	L 0-3
9/5	vs. Adelphi	L 2-3
9/5	vs. Kutztown	L 0-3
9/11	BLUEFIELD STATE	L 0-3
9/11	SO. INDIANA	L 0-3
9/12	VIRGINIA-WISE	W 3-2
9/12	SLIPPERY ROCK	L 0-3
9/18	at WV Wesleyan	L 0-3
9/22	FAIRMONT STATE	L 0-3
9/25	at Ursuline*	L 1-3
9/26	CEDARVILLE*	L 0-3
9/29	at Glensville State	W 3-0
10/6	at Ald. Broaddus*	6 PM
10/9	KY WESLEYAN*	7 PM
10/10	TREVECCA*	1 PM
10/20	GLENVILLE STATE	7 PM
10/24	at Notre Dame OH	11 AM
10/27	vs. Emory & Henry	5 PM
10/27	vs. WV Tech	7 PM
10/30	OHIO VALLEY*	7 PM
10/31	SALEM INTL.*	1 PM
11/4	ALD. BROADDUS*	7 PM
11/7	at Shepherd	11 AM
11/7	vs. Bowie State	1:30 PM
11/9	at Seton Hill	7 PM
11/13	at Salem Intl.*	6 PM
11/14	at Ohio Valley*	1 PM

* Great Midwest Athletic Conference



KY Wesleyan (1-10)		
9/4	vs. SW Baptist	L 0-3
9/4	at Southern Indiana	L 0-3
9/5	vs. Wayne State	L 0-3
9/5	vs. Northwood	L 0-3
9/11	vs. North Alabama	L 0-3
9/11	vs. Quincy	L 0-3
9/12	vs. So. Wesleyan	L 0-3
9/12	vs. Montevallo	L 0-3
9/19	URBANA	L 0-3
9/26	vs. Quincy	L 1-3
9/26	at Bellarmine	W 3-2
10/2	at Cedarville*	7 PM
10/3	at Ursuline*	1 PM
10/9	at Davis & Elkins*	7 PM
10/10	at Ald. Broaddus*	1 PM
10/21	KENTUCKY ST.	7 PM
10/23	BRESCIA	8 PM
10/27	at Oakland City	8 PM
10/30	URSULINE*	8 PM
10/31	CEDARVILLE*	2 PM
11/4	at Trevecca*	7 PM
11/6	SALEM INTL.*	8 PM
11/7	OHIO VALLEY*	2 PM
11/8	MO-ST. LOUIS	3 PM
11/14	TREVECCA*	6 PM

* Great Midwest Athletic Conference



Ohio Valley (5-10)		
9/4	vs. Virginia Union	W 3-0
9/4	vs. Univ. of Sciences	W 3-2
9/5	vs. Felician	W 3-0
9/5	at Millersville	L 1-3
9/8	at KY Christian	W 3-1
9/11	vs. Walsh	L 0-3
9/12	at Urbana	L 0-3
9/12	vs. St. Joseph's IN	L 1-3
9/15	CHARLESTON	L 1-3
9/18	vs. American Intl.	L 1-3
9/18	vs. Angelo State	L 0-3
9/19	vs. Pace	L 0-3
9/19	vs. New Haven	L 0-3
9/25	BLUEFIELD STATE	L 1-3
9/26	WV WESLEYAN	W 3-0
10/3	vs. Glensville State	11 AM
10/3	at WV State	3 PM
10/6	SALEM INTL.*	7 PM
10/10	KY CHRISTIAN	12 PM
10/20	at Bluefield	7 PM
10/23	URSULINE*	7 PM
10/24	CEDARVILLE*	1 PM
10/30	at Davis & Elkins*	7 PM
10/31	at Ald. Broaddus*	12 PM
11/4	at Salem Intl.*	6 PM
11/6	at Trevecca*	7 PM
11/7	at KY Wesleyan*	2 PM
11/13	ALD. BROADDUS*	5 PM
11/14	DAVIS & ELKINS*	1 PM

* Great Midwest Athletic Conference



Salem International (5-9)		
9/3	WV TECH	W 3-1
9/4	vs. Pfeiffer	W 3-0
9/4	vs. Slippery Rock	L 0-3
9/5	vs. Johnson Smith	W 3-0
9/5	vs. Virginia-Wise	L 0-3
9/8	at Virginia Union	L 0-3
9/11	vs. LIU Post	L 0-3
9/11	at Lock Haven	L 0-3
9/12	vs. Wayne State	L 0-3
9/12	vs. Shepherd	L 0-3
9/15	vs. WV Tech	W 3-1
9/19	at WV Wesleyan	L 0-3
9/22	WEST LIBERTY	L 0-3
9/30	GLENVILLE STATE	W 3-0
10/3	BLUEFIELD STATE	9 AM
10/3	WV WESLEYAN	12 PM
10/6	at Ohio Valley*	7 PM
10/14	at Rio Grande	6 PM
10/23	CEDARVILLE*	6 PM
10/24	URSULINE*	1 PM
10/27	at Bluefield State	6 PM
10/30	at Ald. Broaddus*	6 PM
10/31	at Davis & Elkins*	1 PM
11/4	OHIO VALLEY*	6 PM
11/6	at KY Wesleyan*	8 PM
11/7	at Trevecca*	2 PM
11/10	at Glensville State	6 PM
11/13	DAVIS & ELKINS*	6 PM
11/14	ALD. BROADDUS*	1 PM

* Great Midwest Athletic Conference



Trevecca (7-6)		
9/3	vs. Stillman	W 3-0
9/4	vs. William Jewell	W 3-0
9/4	vs. Quachita Baptist	L 0-3
9/5	vs. So. Arkansas	L 1-3
9/5	at AL-Hunstville	L 0-3
9/9	UNION	W 3-0
9/11	OAKLAND CITY	W 3-1
9/12	EMBRY-RIDDLE	L 1-3
9/12	BELLARMINE	L 0-3
9/15	at Lee	L 0-3
9/19	vs. Urbana	W 3-1
9/22	at KY State	W 3-0
9/24	at King	W 3-1
10/2	at Ursuline*	6 PM
10/3	at Cedarville*	1 PM
10/6	KING	7 PM
10/9	at Ald. Broaddus*	6 PM
10/10	at Davis & Elkins*	1 PM
10/15	at Oakland City	8 PM
10/24	vs. AL-Hunstville	4 PM
10/24	at Lee	6 PM
10/27	at Southern Indiana	7 PM
10/30	CEDARVILLE*	7 PM
10/31	URSULINE*	2 PM
11/4	KY WESLEYAN*	7 PM
11/6	OHIO VALLEY*	7 PM
11/7	SALEM INTL.*	2 PM
11/14	at KY Wesleyan*	6 PM

* Great Midwest Athletic Conference



Ursuline (5-11)		
9/4	vs. Holy Family	W 3-1
9/4	at West Chester	L 0-3
9/5	vs. Goldey-Beacom	W 3-0
9/5	vs. Bowie State	W 3-0
9/8	at Urbana	L 2-3
9/10	at Findlay	L 1-3
9/11	vs. Hillsdale	L 1-3
9/12	vs. Mercyhurst	L 0-3
9/13	vs. Pitt-Johnstown	L 1-3
9/15	WALSH	L 2-3
9/19	at Gannon	L 2-3
9/19	vs. Edinboro	L 0-3
9/22	at Wayne State	L 0-3
9/25	DAVIS & ELKINS*	W 3-1
9/26	ALD. BROADDUS*	L 1-3
9/29	NOTRE DAME OH	W 3-1
10/2	TREVECCA*	6 PM
10/3	KY WESLEYAN*	1 PM
10/6	at Cedarville*	7 PM
10/20	MALONE	7 PM
10/23	at Ohio Valley*	7 PM
10/24	at Salem Intl.*	1 PM
10/27	TIFFIN	7 PM
10/30	at KY Wesleyan*	8 PM
10/31	at Trevecca*	2 PM
11/4	CEDARVILLE*	7 PM
11/6	at Notre Dame OH	7 PM
1/10	at Edinboro	7 PM

* Great Midwest Athletic Conference



2015 G-MAC Volleyball Standings

	G-MAC			Overall		
	W	L	Pct.	W	L	Pct.
BLACK						
Alderson Broaddus	1	1	.500	6	10	.375
Salem International	0	0	.000	5	9	.357
Ohio Valley	0	0	.000	5	10	.333
Davis & Elkins	0	2	.000	2	11	.154
BLUE						
Cedarville	2	0	1.000	7	8	.467
Ursuline	1	1	.500	5	11	.313
Trevecca	0	0	.000	7	6	.538
Kentucky Wesleyan	0	0	.000	1	10	.091

OVER 226 YEARS OF EXPERIENCE!

SCREEN Play
PRINTING EST. 1984
937-374-2646
1450 South Patton Street
Xenia, OH 45385
email: scplay@aol.com
www.screenplayprinting.com

Cedarville University "Lady Jackets" (7-8, 2-0)

Cedarville, OH

Head Coach: Doug Walters



No	Player	Pos	Ht	Yr	Hometown	High School
1	Angela Becker	L/DS	5-7	Jr	Denver, CO	Thomas Jefferson
2	Kristin Cardwell	S	5-7	Jr	Massillon, OH	Jackson
3	Kristen Reynolds	S	5-7	Fr	Chattanooga, TN	Boyd-Buchanan
5	Ashley Gould	OH	6-0	Fr	New Glarus, WI	New Glarus
6	Krissy Pratt	OH	5-11	So	Crystal Lake, IL	Crystal Lake Central
7	Abby Woodard	L/DS	5-5	Fr	Camden, OH	Preble Shawnee
9	Emily Gewirtz	L/DS	5-4	So	Ashmore, IL	Judah Christian
10	Alyssa Barkley	OH	5-11	Sr	San Diego, CA	Santa Fe Christian
11	Faith Ferris	MH	6-1	Fr	Delton, MI	Delton Kellogg
12	Abby Shelton	OH	5-10	Jr	Sparta, GA	Chaparral
13	Taylor Wilkerson	OH	5-11	Fr	Brookfield, WI	Brookfield East
14	Rachel Krikke	MH	6-1	Jr	N. Royalton, OH	North Royalton
15	Katie Sir	OH/S	6-2	So	Eden Prairie, MN	Eden Prairie

AVCA NCAA II National Rankings - Poll #4

September 28, 2015

Rank	School (First-Place Votes)	Total Points	2015 Record	Previous Rank
1	Minnesota Duluth (17)	1100	11-2	1
2	Tampa (9)	1081	9-3	4
3	Concordia-St. Paul (5)	1058	9-3	8
4	Ferris State (7)	1038	12-1	2
5	Southwest Minnesota State (1)	970	10-3	3
6	Florida Southern (5)	934	12-0	9
7	Wheeling Jesuit (1)	895	14-3	10
8	Alaska-Anchorage (1)	838	12-0	11
9	Northern State (1)	769	13-0	19
10	Rockhurst	752	13-1	13
11	Wayne State (Neb.)	738	11-2	5
12	Washburn (1)	689	13-1	7
13	Central Missouri	674	13-2	6
14	Central Oklahoma	608	13-1	18
15	Western Washington	495	10-2	15
16	Nebraska-Kearney	449	12-3	14
17	Palm Beach Atlantic	409	9-2	16
18	Colorado School of Mines	388	9-3	12
19	Augustana (SD)	359	11-2	22
20	Cal State San Bernardino	332	11-2	17
21	West Florida	266	11-2	20
22	Grand Valley State	197	8-4	21
23	Lewis	130	12-1	NR
24	Angelo State	79	15-3	NR
25	Winona State	65	7-5	22

Others receiving votes and listed on two or more ballots: Saginaw Valley State 41; California Baptist 37; UC San Diego 35; Wayne State (Mich.) 33; Hillsdale 29; Sonoma State 22; Central Washington 17; Wingate 14; Minnesota State 13; Cal State L. A. 5; Cameron 5; Chaminade 5; Point Loma 4; Missouri Western 3; Tarleton State 3; Arkansas-Fort Smith 2;






After the match great meals are waiting for you in Beavercreek!

It is our pleasure and intention to cater your meeting, event, or party with the same fresh food served hot or cold which ever you prefer.
We will be on time and ready to make your event a success.
Looking forward to serving you!
Visit our website today or find us on Facebook.
On line ordering is now available.

Beavercreek Free Standing Unit 2360 North Fairfield Road Beavercreek, Ohio 45431 937.320.1228 www.cfarestaurant.com/beavercreek/home	The Mall at Fairfield Commons 2727 North Fairfield Road Beavercreek, Ohio 45431 937.320.1224 www.cfarestaurant.com/fairfieldcommons/home
--	---



Springfield, Ohio • 937-325-8480

Kentucky Wesleyan College "Panthers" (1-10, 0-0)


Owensboro, KY Head Coach: Eric Hagan



No	Player	Pos	Ht	Yr	Hometown	High School (Previous)
1	Sarah Swenson	S	5-7	So	Louisville, KY	Male
2	Emily Yocum	DS	5-6	Jr	Burlington, KY	St. Henry District
3	Elizabeth Zuber	MH	5-11	Jr	Olney, IL	East Richland (Kankakee CC)
4	Elizabeth Gober	OH	5-11	Fr	Mascoutah, IL	Mascoutah
6	Mackenzie Harness	DS	5-6	Fr	Eureka, MO	Eureka
7	Kaitlyn Groce	S	5-11	Fr	Bargersville, IN	Center Grove (DePauw)
8	Courtney Gildea	S	5-9	So	Cincinnati, OH	McAuley
10	Hannah Pierce	DS	5-5	Fr	Louisville, KY	Holy Cross
11	Mallory Sacre	OH	6-0	Fr	Prospect, KY	Louisville Ballard
12	Autumn Harris	MH	5-9	Fr	Edwardsville, IL	Edwardsville
15	Nikki Jenkins	OH	5-11	Sr	Lexington, KY	Henry Clay
17	Caitlin Crabtree	DS/OH	5-9	So	Owensboro, KY	Daviess County
18	Nicole Venema	DS	5-5	Fr	Mattawan, MI	Mattawan
21	Jordan King	OH	5-10	Sr	Corydon, KY	Henderson County (Brescia)
28	Gabrielle Gallois	MH	6-1	So	Evansville, IL	Sparta

US DOT No. 077949 PUCO No. 1455HG

Agent for United **OHIO MOVING**
 SAME OR NEXT DAY DELIVERY
 "Moving for three generations"



BBB ACCREDITED BUSINESS

NATIONAL AND WORLD WIDE PRE-PLANNED MOVING
 RESIDENTIAL • COMMERCIAL • OFFICE • EXPERT PACKING & CRATING

ROLLINS for Moving
 LOCAL-NATIONAL-WORLD WIDE WITH THE SAME QUALITY SERVICE
 PROFESSIONAL PACKING AND CRATING

ROLLINS for Storage
 FULLY INSURED CONTAINERIZED STORAGE

ROLLINS for Care
 FULL VALUE PROTECTION

1900 E. LEFFEL LANE SPRINGFIELD, OHIO 45505
ROLLINS MOVING & STORAGE INC.
325-2484
 www.rollinsmoving.com



Comfort Suites
 121 Raydo Circle
 Springfield, OH 45506

937-322-0707

- All Suite Rooms
- Hot Deluxe Breakfast

Only 12 miles from CU!
 Proud to support the Yellow Jackets!!

National Church Residences
 LEGACY VILLAGE

A DISTINCTIVE SENIOR RETIREMENT COMMUNITY.....



Independent Living Patio Homes, Assisted Living, Memory Care, and a NEW Skilled Rehabilitation Center

695 Wycliffe Drive ♦ Xenia, Ohio ♦ 45385 ♦ 888-712-0837
 www.legacyvillagehomes.org

2015 Kentucky Wesleyan College Volleyball Statistics

Overall record: 1-10 Conf: 0-0 Home: 0-1 Away: 1-2 Neutral: 0-7

#	Player	sp	Attack					Set		Serve			Dig		Blocking					points		
			k	k/s	e	ta	pct	a	a/s	sa	se	sa/s	re	dig	dig/s	bs	ba	total	blk/s		be	bhe
15	Jenkins, Nikki	36	84	2.33	50	250	.136	1	0.03	3	1	0.08	11	26	0.72	1	9	10	0.28	0	0	92.5
4	Gober, Elizabeth	36	69	1.92	36	262	.126	2	0.06	4	5	0.11	8	53	1.47	1	10	11	0.31	1	0	79.0
12	Harris, Autumn	28	37	1.32	32	128	.039	0	0.00	1	9	0.04	0	8	0.29	1	13	14	0.50	5	2	45.5
28	Gallois, Gabrielle	35	46	1.31	33	163	.080	0	0.00	5	9	0.14	1	15	0.43	3	18	21	0.60	2	0	63.0
21	King, Jordan	34	39	1.15	29	168	.060	0	0.00	0	3	0.00	6	9	0.26	0	2	2	0.06	1	0	40.0
3	Zuber, Elizabeth	12	13	1.08	12	49	.020	0	0.00	0	0	0.00	0	2	0.17	0	5	5	0.42	2	0	15.5
11	Sacre, Mallory	21	20	0.95	18	86	.023	0	0.00	0	1	0.00	2	12	0.57	1	7	8	0.38	0	0	24.5
17	Crabtree, Caitlin	6	1	0.17	4	9	-.333	0	0.00	1	3	0.17	0	3	0.50	0	1	1	0.17	0	0	2.5
7	Groce, Kaitlyn	17	2	0.12	1	6	.167	48	2.82	5	5	0.29	0	13	0.76	0	2	2	0.12	0	4	8.0
18	Venema, Nicole	34	3	0.09	2	19	.053	16	0.47	1	12	0.03	16	124	3.65	0	0	0	0.00	0	0	4.0
8	Gildea, Courtney	35	1	0.03	4	15	-.200	183	5.23	4	7	0.11	1	62	1.77	0	2	2	0.06	2	12	6.0
1	Swenson, Sarah	8	0	0.00	1	7	-.143	33	4.12	1	3	0.12	0	14	1.75	0	1	1	0.12	0	1	1.5
10	Pierce, Hannah	34	0	0.00	1	4	-.250	6	0.18	8	4	0.24	10	70	2.06	0	0	0	0.00	0	0	8.0
6	Harness, Mackenzie	18	0	0.00	0	1	.000	2	0.11	0	5	0.00	6	23	1.28	0	0	0	0.00	0	0	0.0
2	Yocum, Emily	16	0	0.00	0	1	.000	0	0.00	0	3	0.00	4	21	1.31	0	0	0	0.00	0	1	0.0
KENTUCKY WESLEYA		36	315	8.75	223	1168	.079	291	8.08	33	70	0.92	74	455	12.64	7	70	42.0	1.17	13	20	390.0
Opponents		36	463	12.86	163	1151	.261	428	11.89	74	72	2.06	33	541	15.03	3	117	61.5	1.71	11	15	598.5

Team Statistics	KWC	OPP
ATTACK		
Kills	315	463
Errors	223	163
Total Attacks	1168	1151
Attack Pct	.079	.261
Kills/Set	8.8	12.9
SET		
Assists	291	428
Attempts	1196	1151
Assist Pct	.243	.372
Assists/Set	8.1	11.9
SERVE		
Aces	33	74
Errors	70	72
Attempts	627	860
Serve Pct	.888	.916
Aces/Set	0.9	2.1
SERVE RECEPTIONS		
Errors	74	33
Errors/Set	2.1	0.9
Attempts	787	555
Reception Pct	.906	.941
DEFENSE		
Digs	455	541
Digs/Set	12.6	15.0
BLOCKING		
Block Solo	7	3
Block Assist	70	117
Total Blocks	42.0	61.5
Blocks/Set	1.2	1.7
Block Errors	13	11
Ball handling errors	20	15
ATTENDANCE		
Total	74	542
Dates/Avg Per Date	1/74	3/181
Neutral site #/Avg	7/49	
Current win streak	1	-
Home win streak	0	-

Date	Opponent	Score	Score by set	Att.
#Sep 04	vs Southwest Baptist	L 0-3	19-25,14-25,16-25	25
#Sep 04	at Southern Indiana	L 0-3	13-25,24-26,23-25	170
#Sep 05	vs Northwood (MI)	L 0-3	18-25,10-25,16-25	31
#Sep 05	vs #6 Wayne State (NE)	L 0-3	13-25,5-25,13-25	53
@Sep 11	at North Alabama	L 0-3	18-25,16-25,16-25	255
@Sep 11	vs Quincy	L 0-3	18-25,11-25,20-25	111
@Sep 12	vs Southern Wesleyan	L 0-3	18-25,18-25,16-25	44
@Sep 12	vs Montevallo	L 0-3	15-25,19-25,23-25	22
Sep 19	URBANA	L 0-3	20-25,19-25,16-25	74
Sep 26	vs Quincy	L 1-3	16-25,25-22,14-25,18-25	58
Sep 26	at Bellarmine	w 3-2	25-22,16-25,25-17,13-25,15-12	117

Record in 3-set matches:0-9 • Record in 4-set matches:0-1 • Record in 5-set matches:1-0

Mom and Dad's Dairy Bar & Grille

320 N. Main Street,
Cedarville, OH
(937)766-2046
Offering Game Night
Specials

Hightech Automotive

Appointments for sick cars
and unhappy owners;

937.766.9852

105 West Xenia Ave., Cedarville, OH



Colonial Pizza

98 North Main • Cedarville, Ohio 45314

766-5779

Owned and operated by Ronnie, Sandy & Toby Acton

HOURS:

— Sunday —
5:00 pm to 11:00 pm
— Monday thru Thursday —
11:00 am to 11:00 pm
— Friday & Saturday —
11:00 am to 12:00 pm

colonialpizzacedarville.com

ONLINE ORDERING
NOW AVAILABLE!

2015 Cedarville University Volleyball Statistics

RECORD:	OVERALL	HOME	AWAY	NEUTRAL
ALL GAMES	7-8	6-0	0-3	1-5
CONFERENCE	2-0	2-0	0-0	0-0
NON-CONFERENCE	5-8	4-0	0-3	1-5

#	Player	sp	Attack				pct	Set		Serve			Dig			Blocking					points	
			k	k/s	e	ta		a	a/s	sa	se	sa/s	re	dig	dig/s	bs	ba	total	blk/s	be		bhe
12	Shelton, Abby	54	205	3.80	98	502	.213	7	0.13	19	22	0.35	22	106	1.96	1	18	19	0.35	4	2	-
6	Pratt, Krissy	52	147	2.83	69	418	.187	8	0.15	21	35	0.40	14	95	1.83	2	11	13	0.25	2	2	-
14	Krikke, Rachel	54	100	1.85	16	233	.361	5	0.09	20	14	0.37	0	26	0.48	0	46	46	0.85	3	0	-
10	Barkley, Alyssa	49	64	1.31	31	208	.159	2	0.04	1	1	0.02	0	8	0.16	1	28	29	0.59	3	0	-
13	Wilkerson, Taylor	53	69	1.30	31	226	.168	0	0.00	3	8	0.06	3	17	0.32	0	33	33	0.62	1	0	-
11	Ferris, Faith	39	32	0.82	18	100	.140	0	0.00	0	0	0.00	0	3	0.08	2	22	24	0.62	1	0	-
5	Gould, Ashley	5	3	0.60	2	7	.143	1	0.20	0	0	0.00	0	1	0.20	0	1	1	0.20	0	0	-
2	Cardwell, Kristin	54	27	0.50	5	62	.355	405	7.50	21	16	0.39	0	90	1.67	0	5	5	0.09	2	5	-
15	Sir, Katie	10	5	0.50	4	16	.062	0	0.00	0	0	0.00	0	1	0.10	0	5	5	0.50	0	0	-
1	Becker, Angela	54	4	0.07	1	21	.143	48	0.89	6	10	0.11	16	212	3.93	0	0	0	0.00	0	0	-
7	Woodard, Abby	18	1	0.06	0	2	.500	3	0.17	1	2	0.06	2	25	1.39	0	0	0	0.00	0	0	-
9	Gewirtz, Emily	6	0	0.00	1	1	-1.000	2	0.33	1	1	0.17	3	1	0.17	0	0	0	0.00	0	0	-
3	Reynolds, Kristen	48	0	0.00	2	3	-.667	116	2.42	17	25	0.35	2	63	1.31	0	0	0	0.00	0	4	-
TEAM		-	-	-	-	-	-	-	-	-	-	-	12	-	-	-	-	-	-	-	-	-
CEDARVILLE		54	657	12.17	278	1799	.211	597	11.06	110	134	2.04	74	648	12.00	6	169	90.5	1.68	16	13	-
Opponents		54	663	12.28	261	1721	.234	615	11.39	75	114	1.39	110	754	13.96	13	185	105.5	1.95	20	20	-

Team Statistics	CED	OPP
ATTACK		
Kills	657	663
Errors	278	261
Total Attacks	1799	1721
Attack Pct	.211	.234
Kills/Set	12.2	12.3
SET		
Assists	597	615
Attempts	1808	1770
Assist Pct	.330	.347
Assists/Set	11.1	11.4
SERVE		
Aces	110	75
Errors	134	114
Attempts	1228	1241
Serve Pct	.891	.908
Aces/Set	2.0	1.4
SERVE RECEPTIONS		
Errors	74	110
Errors/Set	1.4	2.0
Attempts	1134	1097
Reception Pct	.935	.900
DEFENSE		
Digs	648	754
Digs/Set	12.0	14.0
BLOCKING		
Block Solo	6	13
Block Assist	169	185
Total Blocks	90.5	105.5
Blocks/Set	1.7	2.0
Block Errors	16	20
Ball handling errors	13	20
ATTENDANCE		
Total	3202	559
Dates/Avg Per Date	6/534	3/186
Neutral site #/Avg	6/61	-
Current win streak	5	-
Home win streak	6	-

Date	Opponent	Score	Score by set	Att.
+Sep 04	vs Fort Hays State	L 1-3	18-25,25-21,20-25,22-25	83
+Sep 04	at Northern Michigan	L 1-3	21-25,25-20,16-25,19-25	205
+Sep 05	vs Lake Superior State	w 3-0	25-19,25-21,25-17	62
+Sep 05	vs Michigan Tech	L 0-3	23-25,17-25,23-25	67
Sep 08	INDIANAPOLIS	w 3-2	17-25,26-24,25-21,23-25,15-12	1176
%Sep 11	vs Pitt-Johnstown	L 1-3	25-19,22-25,13-25,14-25	70
%Sep 11	vs Mercyhurst	L 0-3	23-25,16-25,22-25	55
%Sep 12	vs Hillsdale	L 1-3	21-25,15-25,25-23,21-25	27
%Sep 12	at Findlay	L 0-3	17-25,17-25,22-25	237
Sep 15	at Malone	L 1-3	18-25,16-25,25-13,22-25	117
Sep 18	CHARLESTON	w 3-0	25-16,25-14,25-17	453
Sep 22	URBANA	w 3-0	25-19,26-24,32-30	305
*Sep 25	ALDERSON BROADDUS	w 3-1	25-22,25-23,23-25,25-13	678
*Sep 26	DAVIS & ELKINS	w 3-0	25-17,25-21,25-14	208
Sep 29	SOUTHERN INDIANA	w 3-1	16-25,25-19,26-24,25-20	382

* Great Midwest Athletic Conference
 + Northern Michigan Open
 % Findlay Invitational

Record in 3-set matches: 4-3
 Record in 4-set matches: 2-5
 Record in 5-set matches: 1-0



"Official Charter Company
 of the Cedarville
 Yellow Jackets"
937-879-3000

8250 Expansion Way
 Dayton, OH 45424



(937)
433-8268

Just Experiences
Cotterman & Company INC.

Industrial & Commercial Roofing
 www.CottermanRoofing.com • Dayton & Minster, Ohio

All-Time Series Records

1091 Wins — 700 Losses — .609 Pct. — 53 Years (thru 9/29/15)

	W	L		W	L		W	L
Akron	1	0	Hope International	2	0	Saint Francis IN	10	4
Albertson	0	2	Houghton	5	1	Saint Joseph's IN	1	5
Alderson Broaddus	8	1	Huntington	6	4	Saint Leo	0	2
Alliant International	1	0	Illinois-Springfield	3	0	Saint Mary NE	0	2
Alma	1	0	Illinois Tech	0	2	Saint Vincent	8	0
Anderson	9	4	Indiana PA	3	0	Saint Xavier	0	5
Antioch	1	2	Indiana East	2	4	Salem International	2	0
Aquinas	6	0	Indiana Southeast	1	3	Savannah Art & Design	0	1
Arkansas Tech	0	1	Indiana Tech	2	4	Seton Hill	7	0
Asbury	3	0	Indiana Wesleyan	19	18	Shawnee State	39	4
Ashland	2	7	Indianapolis	11	5	Siena Heights	3	1
Baldwin-Wallace	4	0	Iowa Wesleyan	0	1	Slippery Rock	0	1
Barat	1	0	IUPUI-Indianapolis	4	1	Southern Indiana	1	3
Bellarmine	0	2	John Carroll	0	3	SW Assemblies of God	2	0
Benedictine KS	1	0	Judson	2	1	Spring Arbor	17	14
Berea	1	0	Kent State	2	1	Sue Bennett	1	0
Berry	1	0	Kentucky State	1	0	Taylor	8	32
Bethany	1	1	Kentucky Wesleyan	6	2	Taylor-Fort Wayne	4	0
Bethel IN	9	5	Kenyon	12	3	Tennessee Temple	2	0
Bluffton	8	25	King	1	0	Thomas More	1	5
Bowling Green	0	6	Lake Erie	5	2	Tiffin	34	10
Brescia	1	0	Lake Superior State	1	0	Toledo	2	0
Caldwell	1	0	Lee	0	3	Trevecca Nazarene	6	2
California PA	0	1	Le Moyne	1	0	Tri-State	0	2
California Baptist	0	2	Lincoln Memorial	1	0	Trinity Christian	3	0
Campbellsville	2	2	Lindenwood	1	1	Trinity International	7	1
Capital	9	12	Lock Haven	0	1	Tusculum	0	1
Carlow	5	0	Madonna	1	3			
Carthage	0	1	Maine-Machias	2	0			
Case Western Reserve	3	0	Malone	30	20			
Central State	68	11	Manchester	4	1			
Centre	1	0	Marian	2	1			
Charleston	4	0	Marietta	1	1			
Chicago State	0	1	Marshall	1	1			
Chowan	1	0	Mars Hill	1	0			
Christian Heritage	1	4	Maryville	2	0			
Cincinnati	1	13	Master's	1	2			
Cincinnati Christian	15	0	McKendree	0	3			
Clarion	0	1	Mercyhurst	0	1			
Clearwater Christian	2	0	Miami OH	3	5			
Cleveland State	1	2	Michigan-Dearborn	3	4			
Colorado Christian	1	0	Michigan Tech	2	1			
Columbia	0	1	MidAmerica Nazarene	1	0			
Columbus State	1	0	Midway	2	0			
Concord	2	0	Milligan	1	0			
Concordia MI	8	0	Morehead State	0	2			
Cornerstone	8	3	Morris Harvey	1	0			
Cumberland TN	2	0	Mount St. Joseph	2	34			
Cumberlands KY	2	0	Mount Union	7	0			
Daemen	4	2	Mt. Vernon Nazarene	25	41			
Dallas	1	0	Mountain State	3	0			
Dallas Baptist	1	0	Muskingum	7	6			
Davenport	3	0	Northern Kentucky	0	1			
Davis & Elkins	7	0	Northern Michigan	1	1			
Dayton	3	25	Northwest WA	1	0			
Defiance	24	13	Northwestern IA	1	0			
Denison	11	3	Northwestern MN	2	0			
DePauw	3	0	Northwestern Ohio	2	1			
Doane	0	1	Northwood FL	1	0			
Earlham	13	2	Notre Dame OH	15	1			
Eastern Illinois	0	1	Oakland City	5	1			
Eckerd	0	4	Oberlin	7	0			
Edinboro	1	0	Ohio	3	7			
Fairmont State	0	1	Ohio Dominican	51	19			
Faulkner	1	0	Ohio Northern	7	10			
Ferris State	0	1	Ohio State	0	8			
Findlay	15	21	Ohio Valley	9	0			
Flagler	1	1	Ohio Wesleyan	9	4			
Florida Southern	0	1	Olivet	4	0			
Florissant Valley	0	1	Olivet Nazarene	4	4			
Fort Hays State	0	1	Otterbein	15	5			
Franklin	1	5	Palm Beach Atlantic	2	5			
Fresno Pacific	0	1	Penn State-Behrend	1	0			
Geneva	7	1	Pensacola Christian	1	0			
Georgetown	1	4	Pikeville	2	0			
Glenville State	3	0	Pitt-Johnstown	0	1			
Goshen	1	0	Pittsburgh-Bradford	1	0			
Grace	24	14	Point Park	7	1			
Hanover	5	4	Quincy	0	1			
Harding	0	1	Rio Grande	41	14			
Hastings	0	1	Robert Morris IL	2	0			
Heidelberg	9	4	Roberts Wesleyan	7	0			
Henderson State	0	1	Rockhurst	0	1			
Hillsdale	1	3	Saginaw Valley State	1	0			
Hiram	2	0	Saint Francis IL	0	2			
						Union TN	7	2
						Urbana	63	4
						Ursuline	12	0
						Virginia Union	1	0
						Walsh	17	35
						Warner Southern	3	0
						Washburn	0	1
						Webber International	2	0
						West Alabama	1	0
						West Georgia	0	1
						West Liberty	3	0
						West Virginia Tech	1	0
						West Virginia Wesleyan	1	1
						Western	1	0
						Western Baptist	1	0
						Wheeling Jesuit	0	4
						Wilberforce	3	0
						Wilmington	40	18
						Windsor ONT	1	0
						Wittenberg	29	22
						Wooster	8	6
						Wright State	4	5
						Xavier	7	5
						Youngstown State	0	1

2015 Opponents in Bold



Providing live video streaming of every Lady Jacket home volleyball match in 2015!

yellowjackets.cedarville.edu



13 E. Chillicothe St.
Cedarville, OH

766-7299

RAYMOND JAMES
& ASSOCIATES, INC.
Member New York Stock Exchange/SIPC

Lou Vision
Vice President, Investments
Lou.Vision@RaymondJames.com
(937) 431-6700



MARKETS FLUCTUATE. RELATIONSHIPS SHOULDN'T.
WE'RE WITH YOU EVERY STEP OF THE WAY.

Cedarville Career Leaders

(thru 9/29/15)

MATCHES PLAYED

203	Julia Bradley, 2003-06
202	Anne Lohrenz, 2003-06
193	Sarah Zeltman, 2004-07
184	Melissa Hartman, 1992-95
183	Libby Short Aker, 2005-08
182	Angela Hartman, 1990-93
182	Marcie Duez Curry, 1993-96
181	Suzanne Lehman, 1995-98
181	Julie Opperman, 1995-98
181	Richelle Clem, 2001-04

SETS PLAYED

695	Julia Bradley, 2003-06
688	Anne Lohrenz, 2003-06
663	Sarah Zeltman, 2004-07
649	Libby Short Aker, 2005-08
618	Richelle Clem, 2001-04
616	Maija Hampton, 2005-08
608	Emily Berger Shade, 2006-09
604	Julie Opperman, 1995-98
602	Kelsey Jones, 2002-05
596	Lauren Mable, 2002-05

KILLS

2,851	Sarah Zeltman, 2004-07
2,813	Julia Bradley, 2003-06
2,390	Heather van der Aa, 1998-2001
1,898	Julie Opperman, 1995-98
1,515	Amy Zehr, 1990-92
1,502	Sarah Jackson, 1993-96
1,486	Amy Martin, 1998-2000
1,478	Cheryl Miller, 1992-95
1,475	Kylee Husak, 2007-10
1,456	Emily Shade, 2006-09

ASSISTS

6,662	Kelsey Jones, 2002-05
4,748	Lori Bunger, 1997-2000
4,024	Erica Bartholomew, 2009-12
4,004	Angela Hartman, 1990-93
3,141	Maddie Anderson Ledbetter, 2011-14
2,990	Carrie Hartman, 2000-03
2,367	Rachel Thompson, 2004-06
2,285	Julie Barkhaus McIntyre, 1996-98
1,854	Sarah Sheers, 2006-08
1,504	Michelle Nakano, 1987-89

BLOCK SOLOS

339	Sarah Zeltman, 2004-07
260	Julia Bradley, 2003-06
220	Cheryl Miller, 1992-95
216	Kylee Husak, 2007-10
198	Julie Opperman, 1995-98
196	Heather van der Aa, 1998-2001
196	Amy Zehr, 1990-92
126	Amy Martin, 1998-2001
122	Stephanie Rogers, 2010-13
107	Tammy Mascari, 1985-88

BLOCK ASSISTS

445	Julia Bradley, 2003-06
390	Heather van der Aa, 1998-2001
383	Sarah Zeltman, 2004-07
368	Julie Opperman, 1995-98
318	Stephanie Rogers, 2010-13
315	Kylee Husak, 2007-10
305	Hannah Wagner, 2011-14
304	Amy Martin, 1998-2001
268	Anne Lohrenz, 2003-06
261	Cheryl Miller, 1992-95

TOTAL BLOCKS

722	Sarah Zeltman, 2004-07
705	Julia Bradley, 2003-06
586	Heather van der Aa, 1998-2001
566	Julie Opperman, 1995-98
516	Kylee Husak, 2007-10
481	Cheryl Miller, 1992-95
440	Stephanie Rogers, 2010-13
430	Amy Martin, 1998-2001
387	Amy Zehr, 1990-92
347	Hannah Wagner, 2011-14

DIGS

2,882	Libby Short Aker, 2005-08
2,779	Lauren Mable, 2002-05
2,429	Melissa Hartman, 1992-95
2,167	Heather Kirkpatrick, 2009-12
2,144	Maija Hampton, 2005-08
1,849	Suzanne Lehman, 1995-98
1,844	Kelsey Jones, 2002-05
1,807	Richelle Clem, 2001-04
1,779	Lori Bunger, 1997-2000
1,612	Angela Hartman, 1990-93

SERVICE ACES

276	Maddie Anderson Ledbetter, 2011-14
216	Sarah Zeltman, 2004-07
215	Lauren Mable, 2002-05
182	Angela Hartman, 1990-93
169	Richelle Clem, 2001-04
142	Kelsey Jones, 2002-05
140	Carrie Hartman, 2000-03
139	Paula Thompson, 2001-03
138	Libby Aker Short, 2005-08
132	Amy Zehr, 1990-92

SERVE PERCENTAGE

(500 serves; serves-errors)	
.9872	Suzanne Lehman (2112-27), 1995-98
.9869	Lori Bunger (2524-33), 1997-2000
.9798	Lisa Weirich Wood (1979-40), 1994-97
.9710	Katherine MacKenzie (1104-32), 2007-09
.9692	Courtney Williams (1917-59), 1999-2002
.9674	Pam Huis (983-32), 1998-99
.9635	Sarah Jackson (1479-54), 1993-96
.9631	Cheryl Meyer (1979-73), 1998-2001
.9622	Sarah Zeltman (2623-99), 2004-07
.9601	Rachel Tilton (652-26), 1996-97

PASS PERCENTAGE

(500 attempts; attempts-errors)	
.950	Lori Inkrott (1036-48), 2012-13
.948	Angela Becker (2000-104), 2013-15
.945	Abby Shelton (1106-63), 2013-15
.941	Melissa Hartman (2544-151), 1992-95
.940	Heather Kirkpatrick (3804-228), 2009-12
.940	Suzanne Lehman (3002-181), 1995-98
.940	Becky Wilson (806-48), 1984-85
.939	Marcie Duez Curry (2016-123), 1993-96
.936	Amanda Bell (2520-162), 2011-14
.934	Libby Short Aker (4587-305), 2005-08
.933	Maija Hampton (2612-174), 2005-08

Cedarville Season Leaders

(thru 2014)

MATCHES PLAYED

55	Emily Berger, 2006
55	Libby Short, 2006
55	Rachel Thompson, 2006
54	Julia Bradley, 2004
54	Anne Lohrenz, 2004
54	Erica Paugh, 2004
54	Sarah Zeltman, 2004
54	Maija Hampton, 2006
54	Anne Lohrenz, 2006
54	Melissa Farmerlee, 2006

SETS PLAYED

188	Julia Bradley, 2004
188	Anne Lohrenz, 2004
188	Sarah Zeltman, 2004
187	Erica Paugh, 2004
185	Richelle Clem, 2004
185	Libby Short, 2006
181	Kelsey Jones, 2004
181	Rachel Thompson, 2006
179	Emily Berger, 2006
179	Anne Lohrenz, 2006

KILLS

869	Julia Bradley, 2005
841	Sarah Zeltman, 2004
797	Sarah Zeltman, 2006
788	Julia Bradley, 2004
755	Amy Zehr, 1992
726	Melissa Holland, 2002
713	Heather van der Aa, 2001
706	Sarah Jackson, 1996
666	Julia Bradley, 2006
659	Sarah Zeltman, 2007

TOTAL ATTACKS

1,784	Amy Zehr, 1992
1,726	Sarah Zeltman, 2006
1,631	Sarah Zeltman, 2004
1,611	Julia Bradley, 2005
1,587	Sarah Jackson, 1996
1,509	Sarah Zeltman, 2007
1,501	Erica Paugh, 2004
1,481	Julia Bradley, 2004
1,479	Sarah Jackson, 1995
1,380	Julia Bradley, 2006

ATTACK PERCENTAGE (2 K/G; kills-errors-att.)

.431	Julia Bradley (869-174-1611), 2005
.431	Julia Bradley (788-150-1481), 2004
.424	Melissa Holland (726-148-1362), 2002
.417	Sarah Zeltman (841-161-1631), 2004
.405	Heather van der Aa (634-165-1157), 2000
.403	Julie Opperman (512-90-1046), 1998
.402	Heather van der Aa (713-198-1282), 2001
.395	Julia Bradley (490-111-959), 2003
.386	Julia Bradley (666-134-1380), 2006
.383	Sarah Zeltman (797-136-1726), 2006

TOTAL ASSISTS

2,403	Kelsey Jones, 2004
2,309	Kelsey Jones, 2005
2,180	Rachel Thompson, 2006
1,820	Kelsey Jones, 2003
1,669	Carrie Hartman, 2002
1,619	Lori Bunger, 2000
1,520	Sarah Sheers, 2008
1,454	Lori Bunger, 1999
1,444	Katie Moon, 2007
1,417	Erica Bartholomew, 2010

BLOCK SOLOS

109	Sarah Zeltman, 2006
94	Sarah Zeltman, 2007
88	Amy Zehr, 1992
87	Sarah Zeltman, 2004
74	Cheryl Miller, 1994
74	Julia Bradley, 2006
73	Julia Bradley, 2004
70	Amy Zehr, 1990
68	Cindy Hasselbring, 1994
66	Kylee Husak, 2009

BLOCK ASSISTS

137	Julia Bradley, 2005
132	Heather van der Aa, 2001
127	Kylee Husak, 2008
115	Cheryl Miller, 1994
115	Julie Opperman, 1998
113	Julia Bradley, 2006
112	Julia Bradley, 2004
112	Sarah Zeltman, 2004
107	Julie Opperman, 1996
107	Stephanie Rogers, 2011

TOTAL BLOCKS

201	Julia Bradley, 2005
200	Sarah Zeltman, 2006
199	Sarah Zeltman, 2004
189	Cheryl Miller, 1994
187	Julia Bradley, 2006
186	Sarah Zeltman, 2007
186	Kylee Husak, 2008
185	Julia Bradley, 2004
172	Julie Opperman, 1998
169	Heather van der Aa, 2001

DIGS

842	Richelle Clem, 2004
833	Libby Short, 2005
780	Suzanne Lehman, 1998
759	Lauren Mable, 2005
754	Lauren Mable, 2003
735	Libby Short, 2006
702	Libby Short Aker, 2008
688	Lauren Mable, 2004
685	Melissa Hartman, 1992
681	Angela Becker, 2013

SERVICE ACES

93	Kathy Godinez, 2002
90	Maddie Anderson, 2011
83	Maddie Anderson, 2012
79	Sarah Zeltman, 2006
76	Anne Lohrenz, 2006
74	Lauren Mable, 2002
73	Sarah Zeltman, 2004
70	Richelle Clem, 2004
65	Angela Hartman, 1992
65	Courtney Williams, 2001

SERVE PERCENTAGE (250 serves; attempts-errors)

.9952	Kari Flunker (835-4), 2005
.9911	Suzanne Lehman (776-7), 1998
.9910	Lori Bunger (445-4), 1997
.9904	Lisa Weirich Wood (823-8), 1997
.9896	Suzanne Lehman (573-6), 1996
.9895	Krista Hoffman (565-6), 1995
.9890	Lori Bunger (537-6), 1999
.9888	Suzanne Lehman (528-6), 1997
.9888	Lori Bunger (827-10), 1998
.9887	Heather Smith (702-8), 1998

PASS PERCENTAGE (100 attempts; attempts-errors)

.964	Abby Shelton (421-15), 2013
.962	Melissa Hartman (367-14), 1994
.958	Libby Short Aker (1053-44), 2008
.958	Lori Inkrott (432-19), 2013
.955	Sarah Zeltman (132-6), 2006
.954	Angela Becker (716-33), 2014
.953	Suzanne Lehman (317-15), 1995
.953	Krissey Pratt (470-22), 2014
.952	Libby Short (1073-51), 2007
.952	Lori Inkrott (604-29), 2012

KILLS PER SET

5.55	Amy Zehr, 1992
4.99	Julia Bradley, 2005
4.75	Heather van der Aa, 2001
4.67	Sarah Zeltman, 2007
4.54	Melissa Holland, 2002
4.50	Sarah Zeltman, 2006
4.47	Sarah Zeltman, 2004
4.43	Heather van der Aa, 2000
4.39	Sarah Jackson, 1996
4.19	Julia Bradley, 2004

ASSISTS PER SET

13.91	Kelsey Jones, 2005
13.28	Kelsey Jones, 2004
12.13	Kelsey Jones, 2003
12.04	Rachel Thompson, 2006
11.48	Lori Bunger, 2000
10.70	Carrie Hartman, 2002
10.57	Erica Bartholomew, 2010
10.46	Angela Hartman, 1992
10.39	Lori Bunger, 1999
10.39	Katie Moon, 2007

SERVICE ACES PER SET

0.64	Maddie Anderson, 2011
0.62	Maddie Anderson, 2012
0.58	Kathy Godinez, 2002
0.51	Angie Wilcox, 1985
0.49	Denise DeWalt, 1989
0.49	Angela Hartman, 1992
0.49	Lori Royal, 1993
0.49	Kelsey Jones, 2002
0.48	Becky Wilson, 1984
0.47	Melinda Bradley, 1984
0.47	Lauren Mable, 2004

DIGS PER SET

5.73	Lauren Mable, 2004
5.58	Janae Smart, 1988
5.17	Suzanne Lehman, 1998
5.15	Melissa Hartman, 1992
5.05	Denise DeWalt, 1989
5.02	Janae Smart, 1987
5.01	Angela Becker, 2013
4.83	Jill Jacobs, 1988
4.80	Amy Zehr, 1991
4.80	Lauren Mable, 2003

BLOCKS PER SET

1.32	Cheryl Miller, 1994
1.32	Sarah Zeltman, 2007
1.28	Cindy Hasselbring, 1994
1.22	Kylee Husak, 2008
1.18	Amy Zehr, 1990
1.18	Amy Zehr, 1992
1.16	Julia Bradley, 2005
1.13	Heather van der Aa, 2001
1.13	Sarah Zeltman, 2006
1.12	Julie Opperman, 1998

Taste All That Life Has To Offer.



Experience the best things in life at the new Courtyard by Marriott in Downtown Springfield. Stay for a night or for a week in our beautifully-renovated hotel. Enjoy our garden pool, hot tub, business center and complimentary high-speed internet. Taste the delicious fare of the Mela Urban Bistro. Or just unwind at the Mela Lounge.

taste | life

100 south fountain • downtown springfield • 937.322.3600
www.melaurbanbistro.com

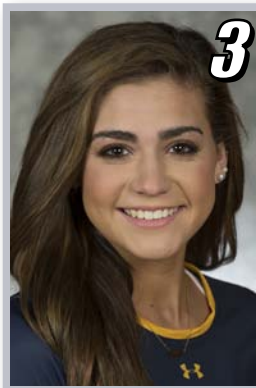
2015 Cedarville University Volleyball



Angela Becker
5-6 • Junior
L/DS • Denver, CO
@angeleighbee



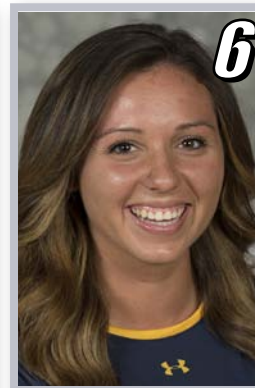
Kristin Cardwell
5-7 • Junior
S • Massillon, OH
@PlayMyCardsWell



Kristen Reynolds
5-7 • Freshman
S • Chattanooga, TN
@kristenmckenna9



Ashley Gould
6-0 • Freshman
OH • New Glarus, WI
@Ashley43Renee



Krissy Pratt
5-11 • Sophomore
OH • Crystal Lake, IL
@krissypratt33



Abby Woodard
5-5 • Freshman
L/DS • Camden, OH
@abbywoodard05



Emily Gewirtz
5-4 • Sophomore
L/DS • Ashmore, IL
@emily_gewirtz9



Alyssa Barkley
5-11 • Senior
OH • San Diego, CA
@AlyssaBarkley2



Faith Ferris
6-1 • Freshman
MH • Delton, MI
@faithferris



Abby Shelton
5-10 • Junior
OH • Sparta, GA



Taylor Wilkerson
5-11 • Freshman
OH • Brookfield, WI
@tay_wilkerson



Rachel Krikke
6-1 • Junior
MH • N. Royalton, OH
@rachel_krikke



Katie Sir
6-2 • Sophomore
OH/S • Eden Prairie, MN
@katie_sir



#CUJACKETS

