

---

Women's Basketball Programs

Women's Basketball

---

1-22-2011

## Cedarville vs. Walsh

Cedarville University

Follow this and additional works at: [https://digitalcommons.cedarville.edu/womens\\_basketball\\_programs](https://digitalcommons.cedarville.edu/womens_basketball_programs)



Part of the [Higher Education Commons](#), and the [Sports Studies Commons](#)

---

### Recommended Citation

Cedarville University, "Cedarville vs. Walsh" (2011). *Women's Basketball Programs*. 32.  
[https://digitalcommons.cedarville.edu/womens\\_basketball\\_programs/32](https://digitalcommons.cedarville.edu/womens_basketball_programs/32)

This Program is brought to you for free and open access by DigitalCommons@Cedarville, a service of the Centennial Library. It has been accepted for inclusion in Women's Basketball Programs by an authorized administrator of DigitalCommons@Cedarville. For more information, please contact [digitalcommons@cedarville.edu](mailto:digitalcommons@cedarville.edu).



# GAME DAY

Saturday, January 22, 2011

5:30 p.m.

vs. Walsh University



## Inside GAME DAY

• <i>Tonight's Game Preview</i>	2
• <i>Kara Cayton's Weekly Blog</i>	2
• <i>Probable Starting Lineups</i>	3
• <i>Stat Comparisons</i>	3
• <i>Last Time Out</i>	5
• <i>Looking Ahead</i>	5
• <i>Follow the Lady Jackets</i>	5
• <i>Lady Jacket Player Profiles</i>	7
• <i>Tonight's Honorary Coach</i>	7
• <i>2010-11 Schedule / Results</i>	7
• <i>1,000 Point Club</i>	9
• <i>All-Time Series Records</i>	9
• <i>Cedarville / Walsh Statistics</i>	10
• <i>Lady Jacket / Cavalier Rosters</i>	11
• <i>AMC Standings/News/Stats</i>	12-13
• <i>CU Season Top 10 Leaders</i>	15
• <i>CU Career Top 10 Leaders</i>	15
• <i>NAIA National Rankings</i>	17
• <i>Meet the Cheerleaders</i>	19
• <i>Meet the 2010-11 Lady Jackets</i>	20

### Colonial Pizza and Deli

98 North Main  
Cedarville, Ohio 45314  
**766-5779**

*"Serving Its Hometown for Over a Decade"*

Owned and operated by Ronnie and Sandy Acton

**HOURS:**

- Sunday —
- 5:00 pm to 11:00 pm
- Monday thru Thursday —
- 11:00 am to 11:00 pm
- Friday & Saturday —
- 11:00 am to 12:00 pm



### Tonight's Corporate Sponsor

FOR THE TRUTH. FOR THE CHURCH. FOR THE WORLD

**"PREACH  
the  
Word."** HOLY BIBLE

The Southern Baptist  
Theological Seminary  
Lynchville, VA www.sbtse.edu

FOR THE GLORY OF GOD



### Comfort Suites

121 Raydo Circle  
Springfield, OH 45506  
**937-322-0707**

- All Suite Rooms
- Hot Deluxe Breakfast

Only 12 miles from CU!  
*Proud to support the Yellow Jackets!!*



## Tonight's Game Preview

The Cedarville University Lady Jackets host the Walsh University Cavaliers tonight in an key American Mideast Conference game in the Callan Athletic Center as part of Alumni Weekend. It is the third of a four-game homestand for the Lady Jackets.

Cedarville, ranked #9 in this week's NAIA II Top 25 Poll, entered last night's game with Carlow at 14-4 overall and 5-0 in the American Mideast Conference. The Cavaliers, ranked #16 in the NAIA II poll, bring a 14-4 overall record, a 5-1 league mark and a nine-game winning streak into tonight's game. Walsh took out visiting Carlow on Tuesday by an overwhelming 102-49 tally.

Entering last night's contest with Carlow, the Lady Jacket lineup had three players scoring in double figures. Leading the way is senior post player Aubrey Siemon - averaging 14.3 ppg and 12.1 rebounds per game. She is now CU's all-time leading rebounder with over 1,160 in her career. Siemon also tops the squad in free throw shooting and blocked shots. Her .548 field goal percentage paces CU and is second-best in the AMC.



Aubrey Siemon

Senior guard Rachel Hurley adds 13.2 points per game while leading the team in assists. Hurley has a team-high in three-point field goals and ranks fifth all-time at CU in made three-pointers.

Rookie Kayla Jenerette, a 5-5 guard, is the third Lady Jacket with a double-digit scoring average at 12.8 points per game. She leads CU with 39 steals and an impressive .563 mark from long-range which is the best in NAIA II.



Kayla Jenerette

Senior guard Lydia Miller is tossing in 9.9 ppg and

is second on the team in assists.

Junior Kara Cayton, a 5-4 guard, adds 8.3 points per game to the offense. She is second on the team in steals and three-point field goals.

Senior forward Caitlyn Brooks adds 5.8 points, 3.9 rebounds and a steady, smart level of play to the CU attack.

Before the Carlow game, Cedarville was shooting .456 from the field including 160-of-373 attempts from the three-point line for an NAIA II-leading .429 mark. CU has four deadly long-range bombers in Jenerette (.563), Cayton (.435), Hurley (.419) and Miller (.397).

Cedarville is outscoring opponents by 16.4 points per game while holding them to .367 shooting from the floor. The Lady Jackets are controlling the boards with a +7.1 margin.

The Cavs are led by 5-11 senior Katie Berry. She averages 14.4 points per game with team highs in assists (61) and steals (44).



Katie Berry

Cara Bedard, a 6-0 senior center, is the leading rebounder at 5.1 boards per game and adds 12.7 points per game. She is .599 from the field

Jessie Miller, a 5-11 senior guard, is scoring at a 15.3 ppg clip and is 15-for-15 at the charity stripe.

Walsh is scoring 77.7 points per game and allowing 62.4 points per contest. The team is .473 from the field but just .314 from behind the three-point line. The Cavs have four of the league's top free throw shooters and hit .775 from the line as a team.

The Lady Jackets lead the all-time series with Walsh by a 19-16 margin. The teams split a pair of games last year - Walsh winning 79-76 in overtime on Dec. 1, 2009 and CU posting an 83-56 verdict on Jan. 26, 2010 in Cedarville.



## Kara Cayton's Latest Weekly Blog

January 17, 2011

This past week ended up being pretty low key for us. All of the other students returned to campus, which reminded us all that it was time for another semester. This week was the first week of classes, so it was a little stressful. The first week of classes is always stressful in some ways. But, we all made it through.

Tuesday we were supposed to play at Notre Dame, but a large and badly-timed snowstorm hit Cedarville and the rest of the state. We got a text early that morning saying that we were leaving a half an hour early. Then, we got another text saying that we should bring extra clothes in case we got stuck in Cleveland. Last, we got a text saying that the game had been postponed. It was a crazy day. I had to run back to my room, grab my books, and go to my afternoon class that I had originally intended to miss. We ended up getting the day off, so we all enjoyed the extra time to attend class and rest.

Saturday we traveled to Pittsburgh to take on Point Park. We knew that it was a difficult place to play. Other teams had struggled to play well there before us. We wanted to simply come in and play well initially. Well, that didn't quite work out. The first half was atrocious. We struggled defending a great deal. We were down nine at halftime, and we went into the locker room frustrated. Determined to win the game, we came out in the second half and played really well. We held them to 16 points in the entire second half. We hung tough and won the game. It was big win for us. All five starters ended up in double figures. It was a well-balanced effort.

Now we are preparing for a busy week. Three tough games await us this week. We know we need to play well to win every game. We look

forward to alumni weekend and getting to spend time with the players that came before us!



*Kara Cayton is a 5-foot-4 junior guard from South Webster, Ohio. She is in her third season of action with the Lady Jackets and is an organizational communications major.*

*Read more of Kara's writings as well as other Cedarville University student-athletes representing their sports at Yellow Jacket Blog Central. Just click on In-Season Blogs at the CU Sports Information website:*

[yellowjackets.cedarville.edu](http://yellowjackets.cedarville.edu)

twitter™

@CUYellowJackets...the official home of Yellow Jacket sports...get the very latest info, news, and updates about CU's 14 intercollegiate athletic teams.

twitter™

Your ad here?

Promote your business!

Contact Jeff Bolender

937-766-4136





## Express<sup>SM</sup> EMPLOYMENT PROFESSIONALS

Respecting People. Impacting Business.<sup>SM</sup>

Beavercreek | (937) 431-5550

Online Applications — [www.expresspros.com](http://www.expresspros.com)

### Stat Comparison

		
Current Record	14-4 (5-0)*	14-4 (5-1)
Points Scored/Game	77.7 ✓	77.7 ✓
Points Allowed/Game	61.3 ✓	62.4
FG %	.456	.473 ✓
3-point FG %	.429 ✓	.314
FT %	.764	.775 ✓
Rebounds/Game	42.2 ✓	39.6
Assists/Game	17.4 ✓	14.0
Turnovers/Game	15.5 ✓	17.9
Blocked Shots/Game	2.9	3.9 ✓
Steals/Game	9.1	11.8 ✓
Current Streak	L1	W9 ✓



155 W. Leffel Lane  
Springfield, OH  
45506

**937-325-5356**



Rachel Hurley

Lydia Miller

Kara Cayton

Aubrey Siemon

Caitlyn Brooks



Amanda Bennett

Jessie Miller

Cara Bedard

Katie Berry

Kayla Kovach

### PROBABLE STARTERS:

\*(as of 1/20/11)

#	Cedarville (14-4, 5-0)*	Pos.	PPG	RPG	APG
11	Rachel Hurley (5-4 senior)	G	13.2	2.8	3.4
21	Lydia Miller (5-8 senior)	G	9.9	4.4	3.0
23	Kara Cayton (5-5 junior)	G	8.3	2.4	3.1
12	Aubrey Siemon (6-1 senior)	C	14.3	12.1	1.4
15	Caitlyn Brooks (6-0 senior)	F	5.8	3.9	1.3

#	Walsh (14-4, 5-1)	Pos.	PPG	RPG	APG
15	Amanda Bennett (5-7 sophomore)	G	4.6	2.9	2.0
21	Jessie Miller (5-11 senior)	G	15.3	3.3	1.7
23	Cara Bedard (6-0 senior)	C	12.7	5.1	0.9
22	Katie Berry (5-11 senior)	F	14.4	4.5	3.4
30	Kayla Kovach (6-0 junior)	F	6.8	4.1	0.8

FOR THE TRUTH · FOR THE CHURCH · FOR THE WORLD

“PREACH  
the  
Word.”

HOLY  
BIBLE



The Southern Baptist  
Theological Seminary  
Louisville, Kentucky · [www.sbt.edu](http://www.sbt.edu)

FOR THE GLORY OF GOD

**Taste All That  
Life Has To Offer.**



Experience the best things in life at the new Courtyard by Marriott in Downtown Springfield. Stay for a night or for a week in our beautifully-renovated hotel. Enjoy our garden pool, hot tub, business center and complimentary high-speed Internet. Taste the delicious fare of the Mēla Urban Bistro. Or just unwind at the Mēla lounge.

taste | life

100 south fountain • downtown springfield • 937.322.3600 • www.melaurbanbistro.com



**SR 72 North**

*(Located across from Cedarville University)*

**Offering SUNOCO fuel, groceries,  
pizza for your convenience**

**(937) 766-1201**

**Open 7 days a week, 24 hours a day  
Pay at the pump!**



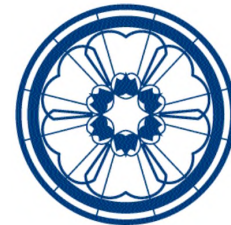
9 South Main Street,  
Cedarville, OH 45314  
937-766-9900

Open: Mon.-Fri., 9 am to 6 pm, Sat., 9 am to 1 pm  
**FREE DELIVERY**



*"Best Wishes to the CU  
Yellow Jackets!"*

www.greenecountyohio.org  
**1-800-733-9109**



**GRACE**  
BAPTIST CHURCH

**SOWING SEED....BEARING FRUIT  
WWW.GRACECEDARVILLE.ORG**

# Beavercreek Rental

TOOLS & EQUIPMENT

Dayton, Ohio 45430

937-429-3444



ORTHOPAEDIC INSTITUTE OF DAYTON, INC.

**Main Office - Kettering**  
3205 Woodman Drive  
937-298-4417

Pietro Seni, M.D.  
Diagnostic Orthopaedics

Richard W. Forster, M.D.  
Total Joint Replacement

Marcos E. Amongero, M.D.  
Surgery of the Spine  
Shoulder & Knee Surgery & Sports Medicine

Kevin J. Paley, M.D.  
Surgery of the Spine

Jeffrey S. Hoskins  
Knee Surgery & Sports Medicine

**Tipp City Office**  
25 S. Tippecanoe Drive  
937-669-0909

Paul A. Nitz, M.D.  
Shoulder & Knee Surgery & Sports Medicine

Gene C. Kim, M.D.  
Hand Surgery

Barry A. Fisher, M.D.  
Primary Care Sports Medicine

David S. Seymour, M.D.  
Physical Medicine & Rehabilitation

Matthew Hodges, DO

Ryan Bauman, M.D.

Nicolas Grisoni, M.D.

Best Wishes for a Great Season!

# BIG ORANGE SHOE SHOP

BIG ORANGE SHOE SHOP

(937)465-6167  
Open Daily Mon-Sat.

103 West Baird St., PO Box 605  
West Liberty, OH 43357

Dennis & Julie McIntosh, Owners  
www.bigorangeshoeshop.com

## Last Time Out 1/18/11



NCAA Division II Hillsdale locked up the NAIA Division II #9 Lady Jackets, 67-59, in a non-conference tilt in the Callan Athletic Center this past Tuesday night when Aubrey Siemon became the school's all-time rebounding leader.

The Chargers brought Cedarville's 12-game winning streak to an end with a tight defense and aggressive rebounding. The visitors held the Jackets to 33 percent shooting and 19 points below their season scoring average.

One of the few highlights occurred six minutes into the contest when Siemon cradled her third rebound of the night. It was the 1,160th of her career which eclipsed the previous record of 1,159 set by NAIA All-American Kirsten Rossotti.

A defensive battle ensued in the first half with Hillsdale leading 28-24 at the break. The Lady Jackets recovered nicely from a 10-point deficit early in the second period to forge a 35-35 tie with 13:20 left. The Chargers, 11-4 overall, ran off 11 straight points and CU never got closer than four.

Kayla Jenerette came off the bench with 16 points as the lone player in double figures for the Lady Jackets, 14-4. Caitlyn Brooks, Kara Cayton, Deborah Chandler, and Lydia Miller all contributed eight points each.

## Looking Ahead



This coming Tuesday, January 25, the Lady Jackets host NCAA III Wittenberg University in a non-conference game beginning at 7:00 p.m. The game marks the end of a four-game CU homestand.

Cedarville ends the week with a trip to New York for two American Midwest Conference games - Friday, Jan. 28 at Houghton beginning at 8:00 p.m. and Saturday, Jan. 29 at Daemen slated for a 2:00 p.m. tipoff.

The team travels to Malone University of Tuesday, Feb. 1 for a 5:30 p.m. encounter with the Pioneers.

Cedarville returns home on Saturday, Feb. 5 for a league contest versus Roberts Wesleyan. The game is part of Li'l Sibs Weekend and tips off at 5:30 p.m.

## Follow the Lady Jackets



Keep up with Lady Jacket women's basketball on the Internet by logging onto the Cedarville University sports information homepage. The address is [yellowjackets.cedarville.edu](http://yellowjackets.cedarville.edu) and the site includes the schedule, roster, game statistics, cumulative stats, game recaps and photos, video highlights plus *Yellow Jacket Insider* - a weekly audio interview with Head Coach Kirk Martin.

facebook

twitter

## BACK THE JACKETS ON FACEBOOK, TWITTER, AND CU SMS ALERTS

Fans can follow Cedarville University Athletics on Facebook and Twitter. Sign up using the links on the sports information website. Look for the rotating graphics in the top right corner of the front page.

Become a fan on Facebook. On Twitter, you can track the Jackets via either the web or text message alerts.

Additionally, you can receive SMS (short message service) text message alerts on your cell phone by signing up on the CU sports information site. You manage your own account in the self-subscribe/unsubscribe system.

The service is free, but standard text message rates apply depending upon the plan you have with your carrier. Click "SMS Alerts" at the bottom right of the website.



# FOREMAN-BLAIR

PONTIAC • BUICK • GMC

visit our website at...  
[www.foremanblair.com](http://www.foremanblair.com)

1-800-640-6308

*Just Experience  
Just* **Cotterman & Company INC.**

Industrial & Commercial Roofing  
[www.CottermanRoofing.com](http://www.CottermanRoofing.com)

Dayton & Minster, Ohio  
937-433-8268

**SCREEN PRINTING**

**OFFSET PRINTING**

**DESIGN SERVICES**

**ADVERTISING SPECIALTIES**

**EMBROIDERY & PATCHES**

**PLAQUES & TROPHIES**

**WALNUTS ASK US!**

**SCREEN Play PRINTING**

1450 S. Patton Street  
Xenia, Ohio 45385  
Fax: 374-0111

**374-2646**



## GREENE COUNTY EYE CARE, INC.

MORE THAN GREAT VISION



Xenia • 376-4055  
Cedarville • 766-2622  
Yellow Springs • 767-7991

# Quality Inn

Springfield, Ohio  
937-323-8631

*"We back the Jackets!"*



*"Proud to Support the Yellow Jackets"*

415 Bellbrook Avenue • P.O. Box 189  
Xenia, Ohio 45385-0189  
(937) 372-3541 • Fax (937) 372-3141  
[www.swlmk.com](http://www.swlmk.com)

Cedarville Fertilizer (937) 766-2411

## Lady Jacket Profile



### Jenna Smith

6-2, Senior, Center  
Cedarville, Ohio

# #22

Jenna Smith is back with the Lady Jackets after sitting out the 2007-08 campaign as a redshirt and missing last season due to a serious knee injury suffered in a preseason scrimmage..... recovering from another knee injury that occurred at Wilberforce on Dec. 7 - seeing more

and more minutes in recent games.....solid rebounder and scorer.

**2008-09** - Appeared in all 30 contests with 29 starts.....team's fourth-leading scorer at 8.8 points per game.....CU's second-best boarder with 5.9 caroms per outing.....blocked 29 shots.....hit a second-best .462 from the field (108-234).

**High School** - Four-year letter winner in basketball at Cedarville High School.....three-time member of the District 9 All-Star Team.....two-time all-conference selection.....second all-time leading scorer at CHS with 1,230 points.....also earned one letter in track & field.....National Honor Society student.

**Personal** - Nursing major at Cedarville University.....born 8/20/89 in Bedford, VA.....daughter of Brad and Rhonda Smith.....father is Dean of Residence Life and mother is an adjunct nursing instructor at Cedarville University.....has two younger brothers.

# BUCKEYE

CHARTERS

"Official Charter Company of the  
Cedarville Yellow Jackets"

937-879-3000

8250 Expansion Way • Dayton, OH 45424

# BUCKEYE

CHARTERS

## Tonight's Honorary Coach



**Dr. Melissa Hartman**  
Assistant Professor of Biology  
Cedarville University



"Dr. Hartman has been a wonderful example to me in my first semester at CU. She is a great teacher whose love for God can't help but show through her enthusiasm for teaching students about God's beautiful creation. Her ability to be so personable with students, taking the time to learn our names and take a true interest in our lives has been an amazing encouragement to me. I look forward to my class with her this semester in anticipation of the knowledge I will receive from her lectures and the Godly example she displays, thank-you Dr. Hartman!"

Selected by Deborah Chandler

## 2010-11 Schedule/Results



### Cedarville University "Lady Jackets" (14-4, 5-0 AMC)

#### November (4-3, 1-0 AMC)

Nov. 12	NORTHWESTERN OHIO	Cedarville	W 104-70
Nov. 13	INDIANA WESLEYAN#	Cedarville	L 57-70
Nov. 16	at Findlay	Findlay, OH	W 70-52
Nov. 20	at Urbana	Urbana, OH	L 74-79
Nov. 23	at Ohio Dominican	Columbus, OH	L 49-51
Nov. 27	at Michigan-Dearborn#	Dearborn, MI	W 96-78
Nov. 30	MALONE*	Cedarville	W 80-42

#### December (7-0, 2-0 AMC)

Dec. 4	URSULINE*	Cedarville	W 98-49
Dec. 7	at Wilberforce*	Wilberforce, OH	W 67-46
Dec. 9	at Taylor	Upland, IN	W 79-58
Dec. 11	at Huntington#	Huntington, IN	W 75-64
Dec. 18	SAINT FRANCIS IN	Cedarville	W 69-62
Dec. 29	vs. Albany Pharmacy	W. Palm Beach, FL	W 94-53
Dec. 30	vs. Bethel IN	W. Palm Beach, FL	W 94-88

#### January (3-1, 2-0 AMC)

Jan. 4	MT. VERNON NAZARENE*	Cedarville	W 78-50
Jan. 8	URBANA	Cedarville	W 85-65
Jan. 15	at Point Park*#	Pittsburgh, PA	W 70-59
Jan. 18	HILLSDALE	Cedarville	L 59-67
Jan. 21	CARLOW*	Cedarville	7 pm
Jan. 22	WALSH* Alumni Weekend	Cedarville	5:30 pm
Jan. 25	WITTENBERG	Cedarville	7 pm
Jan. 28	at Houghton*	Houghton, NY	8 pm
Jan. 29	at Daemen*#	Amherst, NY	2 pm

#### February (0-0, 0-0 AMC)

Feb. 1	at Malone*	Canton, OH	5:30 pm
Feb. 3	POINT PARK*	Cedarville	5:30 pm
Feb. 5	ROBT. WESLEYAN*# L1 Sibs Wknd	Cedarville	5:30 pm
Feb. 10	at Notre Dame OH*	South Euclid, OH	5:30 pm
Feb. 12	at Mt. Vernon Nazarene*	Mt. Vernon, OH	2 pm
Feb. 15	WILBERFORCE*	Cedarville	5:30 pm
Feb. 19	NOTRE DAME OH*	Cedarville	5:30 pm

#### HOME GAMES IN BOLD CAPS

\*American Midwest Conference

# 90.3 WCDR Game of the Week

Watch all home games on LIVE VIDEO STREAM

All road games other than WCDR Games of the Week

carried live on free TEAMLINE internet

All Starting Times Local



**TEAMLINE**  
LIVE PLAY-BY-PLAY & MORE

## Trophy Sports Center

- Team Sales
- Awards
- Uniforms
- School Jackets
- Screen Printing



# 376-2311







**GREENE MEMORIAL  
HOSPITAL**  
KETTERING HEALTH NETWORK™



**BELLO**  
SPAGHETTI • SUBS • STEAKS •

**300 Xenia Town Square**  
*(Located inside RAMADA INN)*  
**Xenia, Ohio**  
**372-9921**



**AMERICAN FAMILY  
INSURANCE**  
AUTO HOME BUSINESS HEALTH LIFE®

Office:  
(937)374-0855

**TODD W. SCHULZ  
INSURANCE AGENCY**

65 Dayton Avenue  
XENIA, OHIO 45385

[www.toddschulzagency.com](http://www.toddschulzagency.com)

**SHERIDAN  
& ASSOCIATES** AUCTIONEERS, REAL ESTATE BROKER, APPRAISERS, LLC

(937) 767-2021  
[www.SheridanTeam.com](http://www.SheridanTeam.com)



*We back the  
Jackets all  
the way*



*Cedarville's only Real Estate, Auction, &  
Appraisal Company*

**No-fee consultations available.**



**RE/MAX**

**DAVE JOHNSON**  
**372-2626**

**fkci**  
f&k concepts, inc.

Promotional Products	462 Carthage Drive Beavercreek, OH 45434
Recognition Awards	
Engraving Service	Phone: 937-426-6843
Signs and Panels	Fax: 937-426-9722
Unique Projects	<a href="http://www.fkci.com">www.fkci.com</a>
Name Badges	e-mail: <a href="mailto:fkci@fkci.com">fkci@fkci.com</a>
Plaques	

# 1,000 Point Club



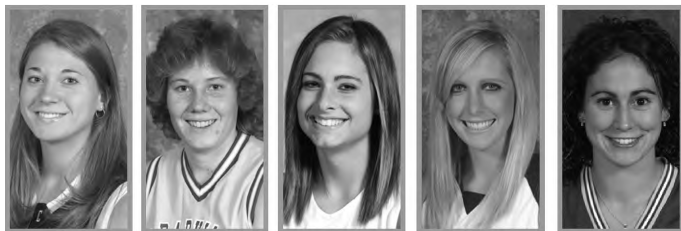
-thru 1/18/11-



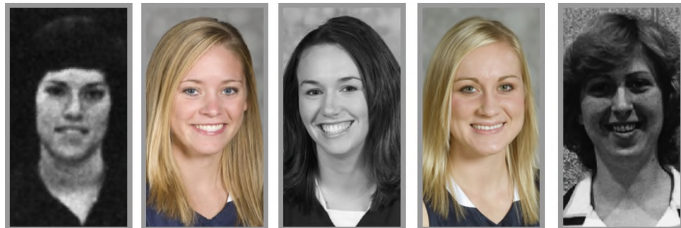
**Brittany Smart** 3,236 points (2003-07)  
**Kari Flunker** 2,275 points (2001-05)  
**Kirsten Rossotti** 2,229 points (1998-00, 2001-03)  
**Vicki Butler** 2,103 points (1976-80)  
**Diane Rank** 1,760 points (1988-92)



**Alison Lemon** 1,710 points (2006-10)  
**Julie Nourse** 1,706 points (1997-2001)  
**Melissa Hartman** 1,678 points (1992-96)  
**Julie Stauffer** 1,656 points (2000-04)  
**Amy Zehr** 1,642 points (1989-93)



**Emily Delimpo** 1,556 points (2002-06)  
**Chris Friesen** 1,441 points (1985-89)  
**Aubrey Siemon** 1,353 points (2007-11)  
**Karah Walton** 1,331 points (2003-07)  
**Amanda Porter** 1,322 points (1997-2001)



**Cathy Bunton** 1,080 points (1974-78)  
**Rachel Hurley** 1,064 points (2007-11)  
**Kristi Beougher** 1,063 points (2003-07)  
**Lydia Miller** 1,062 points (2007-11)  
**Val Whisler** 1,057 points (1979-83)

# All-Time Series Records



-thru 1/18/11-

	W	L		W	L
Adelphi	1	0	Marian	0	2
Akron	3	3	Marshall	0	1
<b>Albany Pharmacy</b>	<b>1</b>	<b>0</b>	Masters	0	1
Alumnae	6	0	Miami	4	5
Anderson	1	0	Miami Valley Hospital	3	1
Antioch	1	0	Michigan Christian	0	1
Ashland	10	10	<b>Michigan-Dearborn</b>	<b>1</b>	<b>1</b>
Azusa Pacific	0	1	MidAmerica Nazarene	0	2
Ball State	0	1	Morehead State	0	2
Baptist Bible	1	0	Morningside	2	2
Bartlesville Wesleyan	0	1	Mount Carmel	1	0
<b>Bethel IN</b>	<b>3</b>	<b>2</b>	Mount St. Joseph	16	18
Bluffton	14	20	<b>Mount Vernon Nazarene</b>	<b>34</b>	<b>13</b>
Bowling Green	1	6	National Cash Register	0	3
Brewton Parker	0	1	Northern Kentucky	0	1
Briar Cliff	0	1	Northwestern IA	0	2
Bryan	3	0	<b>Northwestern Ohio</b>	<b>5</b>	<b>0</b>
California Baptist	1	0	Northwood FL	1	0
Capital	9	3	Notre Dame IN	0	1
Cardinal Stritch	1	0	<b>Notre Dame OH</b>	<b>8</b>	<b>1</b>
<b>Carlow</b>	<b>3</b>	<b>0</b>	Nyack	1	0
Central State	16	16	Oakland City	3	2
Cincinnati	6	4	Ohio	3	5
Cleveland State	1	0	<b>Ohio Dominican</b>	<b>30</b>	<b>25</b>
Collegiate	0	1	Ohio Northern	6	4
Colorado Christian	1	0	Ohio State	0	7
Concordia MI	9	1	Ohio Wesleyan	7	2
Concordia NE	2	0	Ohio-Belmont	1	0
Concordia NY	1	1	Ohio-Chillicothe	2	0
<b>Daemen</b>	<b>8</b>	<b>1</b>	Olivet Nazarene	1	4
Davis & Elkins	1	0	Otterbein	1	1
Dayton	7	14	Ozarks	2	0
Defiance	8	19	<b>Point Park</b>	<b>10</b>	<b>0</b>
Denison	3	1	Queens	0	1
Dyke	0	3	Rio Grande	15	30
Earlham	4	0	<b>Roberts Wesleyan</b>	<b>5</b>	<b>2</b>
Eastern Illinois	0	1	Saint Ambrose	1	0
Emmanuel	0	1	Saint Francis IL	1	0
Evangl	0	2	<b>Saint Francis IN</b>	<b>5</b>	<b>3</b>
<b>Findlay</b>	<b>7</b>	<b>23</b>	Saint Joseph's IN	1	0
Finlandia	1	0	Saint Vincent	3	5
Franklin	0	1	Seton Hill	3	1
Fresno Pacific	1	0	Shawnee State	15	25
Geneva	8	1	Siena Heights	2	0
Georgetown	3	9	Sioux Falls	0	1
Glenville State	0	1	Spring Arbor	4	7
Goshen	2	0	Springfield City Hospital	1	0
Grace	9	4	St. Elizabeth	3	0
Grand Rapids Baptist	2	0	St. Marys	0	1
Greenville	1	0	SUNY-Cortland	0	1
Grove City	1	0	<b>Taylor</b>	<b>22</b>	<b>10</b>
Hanover	3	0	Tennessee Temple	2	0
Hastings	1	0	Thomas More	6	0
Heidelberg	1	1	Tiffin	26	15
<b>Hillsdale</b>	<b>0</b>	<b>2</b>	Transylvania	2	5
Hope International	1	0	Trinity	1	0
<b>Houghton</b>	<b>4</b>	<b>0</b>	Trinity Christian	3	1
<b>Huntington</b>	<b>7</b>	<b>6</b>	Union KY	1	0
Indiana	0	1	<b>Urbana</b>	<b>34</b>	<b>24</b>
Indiana State	0	2	<b>Ursuline</b>	<b>8</b>	<b>0</b>
Indiana Tech	2	1	Vanguard	0	1
<b>Indiana Wesleyan</b>	<b>6</b>	<b>11</b>	Virginia-Wise	1	0
Indiana-South Bend	2	1	<b>Walsh</b>	<b>19</b>	<b>16</b>
Iowa Wesleyan	0	1	Warner Southern	1	0
John Brown	0	1	Webber International	2	0
John Carroll	1	0	West Virginia Wesleyan	0	2
Judson	1	0	Western	1	0
Kendall	1	0	Western Baptist	0	1
Kent State	0	1	Western Michigan	1	1
Kentucky Christian	2	1	Wheeling Jesuit	1	0
Kenyon	6	1	<b>Wilberforce</b>	<b>32</b>	<b>1</b>
King	0	1	Wilmington	32	18
Lake Erie	4	0	Wisconsin-LaCrosse	1	0
Lee	2	0	<b>Wittenberg</b>	<b>10</b>	<b>4</b>
Liberty	0	2	Wooster	9	9
Lindsey Wilson	2	1	Wright Patterson AFB	4	0
Lorain County	1	0	Wright State	8	6
Lyndon State	2	0	Xavier	2	2
Madonna	7	2		<b>683</b>	<b>503</b>
Maine-Fort Kent	2	0			
Malloy	1	0			
<b>Malone</b>	<b>28</b>	<b>11</b>			
Manchester	3	3			

(49 years - .576)

2010-11 Opponents in Bold

# BUCKEYE CHARTERS

"Official Charter Company of the Cedarville Yellow Jackets"  
 937-879-3000

8250 Expansion Way • Dayton, OH 45424

# CRELLIN PLUMBING

QUALITY SERVICE for 50 YEARS  
 1960 - 2010



"A broken cistern cannot hold water."  
 Jeremiah 2:13

(937) 325-8006





## 2010-11 Cedarville University Basketball Statistics *(as of 1/20/11)*

RECORD:	OVERALL	HOME	AWAY	NEUTRAL
ALL GAMES	14-4	6-2	6-2	2-0
CONFERENCE	5-0	3-0	2-0	0-0
NON-CONFERENCE	9-4	3-2	4-2	2-0

#	Player	gp-gs	min	avg	Total		3-Point		F-Throw		Rebounds				pf	dq	a	to	blk	stl	pts	avg
					fg-fga	pct	3fg-fga	pct	ft-fa	pct	off	def	tot	avg								
12	Siemon, Aubrey	17-17	509	29.9	85-155	.548	0-0	.000	73-83	.880	56	150	206	12.1	33	0	23	28	26	20	243	14.3
11	Hurley, Rachel	18-18	557	30.9	88-199	.442	39-93	.419	22-26	.846	17	34	51	2.8	22	0	61	33	1	23	237	13.2
04	Jenerette, Kayla	17-2	369	21.7	78-154	.506	36-64	.563	25-37	.676	14	31	45	2.6	28	0	48	37	0	39	217	12.8
21	Miller, Lydia	18-18	510	28.3	70-159	.440	25-63	.397	14-15	.933	37	43	80	4.4	39	0	54	44	3	11	179	9.9
23	Cayton, Kara	17-17	438	25.8	48-111	.432	37-85	.435	8-10	.800	9	32	41	2.4	28	0	53	38	1	25	141	8.3
33	Chandler, Deborah	17-0	331	19.5	46-113	.407	3-8	.375	29-43	.674	23	50	73	4.3	38	0	11	27	5	6	124	7.3
15	Brooks, Caitlyn	18-17	348	19.3	45-103	.437	2-9	.222	12-16	.750	28	43	71	3.9	28	0	24	25	8	16	104	5.8
22	Smith, Jenna	13-1	141	10.8	27-50	.540	0-0	.000	5-11	.455	14	31	45	3.5	15	0	5	11	3	5	59	4.5
05	Orchard, Becky	18-0	299	16.6	27-77	.351	17-48	.354	6-11	.545	13	32	45	2.5	29	1	27	24	5	16	77	4.3
20	Williams, Jenna	6-0	25	4.2	2-4	.500	0-1	.000	2-3	.667	2	5	7	1.2	1	0	1	0	0	1	6	1.0
14	Ansiel, Heidi	12-0	69	5.8	4-15	.267	1-2	.500	2-3	.667	1	8	9	0.8	9	0	7	3	0	2	11	0.9
30	Jakucki, Kathy	2-0	4	2.0	0-0	.000	0-0	.000	0-1	.000	0	0	0	0.0	1	0	0	1	0	0	0	0.0
Team											26	60	86				8					
Total.....		18	3600		520-1140	.456	160-373	.429	198-259	.764	240	519	759	42.2	271	1	314	279	52	164	1398	77.7
Opponents.....		18	3600		393-1070	.367	103-361	.285	214-312	.686	215	416	631	35.1	253	1	209	304	37	138	1103	61.3

Dale's

TRUCK PARTS  
INC.

2891 U.S. 42 East • Cedarville, OH

1-800-848-3589

RAMADA

WORLDWIDE

(937) 372-9921

Proud sponsors of  
Yellow Jacket Basketball

"Please ask about our  
Cedarville University  
rate"

300 Xenia Town Square  
Xenia, Ohio 43585



## 2010-11 Walsh University Basketball Statistics

RECORD:	OVERALL	HOME	AWAY	NEUTRAL
ALL GAMES.....	(14-4)	(6-3)	(8-1)	(0-0)
CONFERENCE.....	(5-1)	(3-0)	(2-1)	(0-0)
NON-CONFERENCE.....	(9-3)	(3-3)	(6-0)	(0-0)

#	Player	GP-GS	Min	Avg	---TOTAL---		---3-PTS---		FT-FTA	Pct	---REBOUNDS---				PF	FO	A	TO	Blk	Stl	Pts	Avg
					FG-FGA	Pct	3FG-FGA	Pct			Off	Def	Tot	Avg								
21	Miller, Jessie.....	6-6	29.5		33-69	.478	11-35	.314	15-15	1.000	2	18	20	3.3	8	1	10	15	3	10	92	15.3
22	Berry, Katie.....	18-18	29.5		91-194	.469	16-42	.381	62-76	.816	24	57	81	4.5	46	0	61	50	13	44	260	14.4
23	Bedard, Cara.....	18-18	24.8		91-152	.599	2-4	.500	44-57	.772	25	66	91	5.1	25	0	16	22	32	17	228	12.7
44	Hall, Tatianna.....	16-2	16.3		60-113	.531	2-4	.500	5-10	.500	27	33	60	3.8	20	0	4	32	4	11	127	7.9
50	Hooten, Bianca.....	12-8	18.5		32-86	.372	7-29	.241	14-15	.933	10	32	42	3.5	6	0	21	17	2	16	85	7.1
30	Kovach, Kayla.....	18-9	17.4		42-92	.457	1-8	.125	38-47	.809	29	45	74	4.1	36	0	15	27	2	14	123	6.8
3	Ciccarone, Daniella.	18-1	14.2		36-72	.500	1-5	.200	49-56	.875	12	20	32	1.8	18	0	25	30	1	11	122	6.8
25	Yoder, Kristi.....	13-7	17.7		27-65	.415	2-7	.286	19-28	.679	19	15	34	2.6	17	0	5	15	2	5	75	5.8
15	Bennett, Amanda.....	18-17	21.3		35-86	.407	0-3	.000	12-17	.706	8	45	53	2.9	35	0	36	40	0	32	82	4.6
24	Woolf, Darlene.....	18-4	19.4		28-69	.406	1-5	.200	18-28	.643	21	28	49	2.7	32	0	34	24	3	29	75	4.2
20	Berry, Maggie.....	16-0	10.9		25-53	.472	10-23	.435	2-5	.400	5	21	26	1.6	9	0	14	12	5	11	62	3.9
34	Gallupe, Tara.....	11-0	5.5		10-15	.667	0-0	.000	12-16	.750	6	13	19	1.7	17	0	0	6	1	2	32	2.9
40	Swickard, Mandi.....	15-0	7.5		10-30	.333	0-0	.000	0-4	.000	11	9	20	1.3	13	0	4	13	1	5	20	1.3
10	Burkes, Ciera.....	9-0	8.9		3-9	.333	1-6	.167	1-1	1.000	1	6	7	0.8	11	0	6	8	1	3	8	0.9
33	Earnest, Katelyn.....	6-0	2.5		2-3	.667	0-0	.000	1-2	.500	2	4	6	1.0	2	0	2	0	3	5	0.8	
5	Chovan, Alyssa.....	5-0	2.6		1-3	.333	0-1	.000	0-0	.000	0	0	0	0.0	2	0	1	1	0	0	2	0.4
TM TEAM.....											47	51	98	5.4	0		8					
Total.....		18			526-1111	.473	54-172	.314	292-377	.775	249	463	712	39.6	297	1	252	322	70	213	1398	77.7
Opponents.....		18			401-1021	.393	123-349	.352	199-296	.672	217	374	591	32.8	308	-	200	414	51	135	1124	62.4

# Cedarville University "Lady Jackets" (14-4, 5-0) (as of 1/20/11)



HEAD COACH: KIRK MARTIN (10th year, 259-62, .807)  
 ASSISTANT COACHES: KARI FLUNKER, STACIE TRAVIS

No	Player	Pos	Ht	Yr	Hometown	3-Pt. FG	2-Pt. FG	Free Throws	Fouls	3FG	2FG	FT	TP
4	Kayla Jenerette	G	5-5	Fr	Greenville, SC	3333333	222222222222	111111111111	12345				
5	Becky Orchard	G	5-10	Fr	Loudonville, OH	3333333	222222222222	111111111111	12345				
11	Rachel Hurley	G	5-4	Sr	Indiana, PA	3333333	222222222222	111111111111	12345				
12	Aubrey Siemon	C	6-1	Sr	Springfield, OH	3333333	222222222222	111111111111	12345				
14	Heidi Ansiel	G	5-7	Fr	Warrenville, IL	3333333	222222222222	111111111111	12345				
15	Caitlyn Brooks	F	6-0	Sr	Centerville, OH	3333333	222222222222	111111111111	12345				
20	Jenna Williams	F	5-8	Fr	Xenia, OH	3333333	222222222222	111111111111	12345				
21	Lydia Miller	G	5-7	Sr	Berlin, OH	3333333	222222222222	111111111111	12345				
22	Jenna Smith	C	6-2	Sr	Cedarville, OH	3333333	222222222222	111111111111	12345				
23	Kara Cayton	G	5-4	Jr	South Webster, OH	3333333	222222222222	111111111111	12345				
30	Kathy Jakucki	F	5-11	Jr	Vineland, NJ	3333333	222222222222	111111111111	12345				
33	Deborah Chandler	F	6-0	Fr	Southlake, TX	3333333	222222222222	111111111111	12345				
						3333333	222222222222	111111111111	12345				



One mile north of  
Yellow Springs  
on Route 68

OPEN 7 AM TO 10 PM  
EVERY DAY

**937-325-0629**



**Beaver Valley Shopping Center**  
 3245 Seajay Drive, Beavercreek, Ohio  
 45430

**937-426-0060**  
[www.lofinos.com](http://www.lofinos.com)

# Walsh University "Cavaliers" (14-4, 5-1)



HEAD COACH: LAUREL WARTLUFT (5th year, 75-62, .547)  
 ASSISTANT COACH: KEVIN LONGANECKER

No	Player	Pos	Ht	Yr	Hometown	3-Pt. FG	2-Pt. FG	Free Throws	Fouls	3FG	2FG	FT	TP
3	Daniella Ciccarone	G	5-8	Fr	Quakertown, PA	3333333	222222222222	111111111111	12345				
5	Alyssa Chovan	G	5-7	Fr	North Canton, OH	3333333	222222222222	111111111111	12345				
10	Ciera Burkes	G	5-3	Sr	Shaker Heights, OH	3333333	222222222222	111111111111	12345				
15	Amanda Bennett	G	5-7	So	Tallmadge, OH	3333333	222222222222	111111111111	12345				
20	Maggie Berry	G/F	6-0	Fr	Cleveland, OH	3333333	222222222222	111111111111	12345				
21	Jessie Miller	G	5-11	Sr	Strasburg, OH	3333333	222222222222	111111111111	12345				
22	Katie Berry	G/F	5-11	Sr	Cleveland, OH	3333333	222222222222	111111111111	12345				
23	Cara Bedard	C	6-0	Sr	Randolph, OH	3333333	222222222222	111111111111	12345				
24	Darlene Woolf	G	5-7	Sr	East Rochester, OH	3333333	222222222222	111111111111	12345				
25	Kristi Yoder	C	6-1	Jr	Millersburg, OH	3333333	222222222222	111111111111	12345				
30	Kayla Kovach	F	6-0	Jr	Lakewood, OH	3333333	222222222222	111111111111	12345				
33	Katelyn Earnest	C	6-2	Fr	Doylestown, OH	3333333	222222222222	111111111111	12345				
34	Tara Gallupe	F	6-0	Fr	Pittsburgh, PA	3333333	222222222222	111111111111	12345				
40	Mandi Swickard	F	6-1	Jr	Alexandria, OH	3333333	222222222222	111111111111	12345				
44	Tatianna Hall	F	6-0	Sr	Cleveland, OH	3333333	222222222222	111111111111	12345				
50	Bianca Hooten	G	5-11	Jr	Canton, OH	3333333	222222222222	111111111111	12345				



# American Mideast Conference Schedules/Results

**CARLOW (1-8)**

11/9	NOTRE DAME	L 74-47
11/23	DAEMEN	L 79-60
12/4	HOUGHTON	W 58-55
12/11	at Houghton	L 80-51
1/4	POINT PARK	L 64-44
1/7	at Daemen	L 88-50
1/8	at Robt. Wes.	L 79-62
1/15	WILBERFORCE	L 55-44
1/18	at Walsh	L 102-49
1/21	at Cedarville	7 pm
1/22	at Mt. Vern. Naz.	2 pm
1/29	URSULINE	4 pm
2/5	at Malone	3 pm
2/12	at Point Park	2 pm
2/15	WALSH	7:30 pm
2/19	ROBT. WES.	2 pm

**CEDARVILLE (5-0)**

11/30	MALONE	W 80-42
12/4	URSULINE	W 98-49
12/7	at Wilberforce	W 67-46
1/4	MT. VERN. NAZ.	W 78-50
1/15	at Point Park	W 70-59
1/21	CARLOW	7 pm
1/22	WALSH	5:30 pm
1/28	at Houghton	8 pm
1/29	at Daemen	2 pm
2/1	at Malone	5:30 pm
2/5	ROBT. WES.	5:30 pm
2/8	at Ursuline	7 pm
2/10	at Notre Dame	5:30 pm
2/12	at Mt. Vern. Naz.	2 pm
2/15	WILBERFORCE	5:30 pm
2/19	NOTRE DAME	5:30 pm

**DAEMEN (7-0)**

11/23	at Carlow	W 79-60
12/4	WALSH	W 68-66
12/7	at Robt. Wes.	W 75-58
1/4	HOUGHTON	W 70-63
1/7	CARLOW	W 88-50
1/11	POINT PARK	W 95-58
1/15	NOTRE DAME	W 53-49
1/21	at Ursuline	7 pm
1/22	at Malone	2 pm
1/28	MT. VERN. NAZ.	5:30 pm
1/29	CEDARVILLE	2 pm
2/5	at Wilberforce	6 pm
2/8	at Walsh	6 pm
2/12	at Houghton	2 pm
2/15	ROBT. WES.	5:30 pm
2/19	at Point Park	2 pm

**HOUGHTON (2-5)**

11/16	at Robt. Wes.	L 76-61
12/4	at Carlow	L 58-55
12/7	at Point Park	L 59-47
12/11	CARLOW	W 80-51
1/4	at Daemen	L 70-63
1/11	WALSH	L 72-66
1/15	URSULINE	W 74-51
1/21	at Malone	5:30 pm
1/22	at Notre Dame	2 pm
1/28	CEDARVILLE	8 pm
1/29	WILBERFORCE	2 pm
2/1	ROBT. WES.	6 pm
2/5	at Mt. Vern. Naz.	2 pm
2/12	DAEMEN	2 pm
2/15	POINT PARK	6 pm
2/19	at Walsh	2 pm

**MALONE (1-5)**

11/30	at Cedarville	L 80-42
12/4	WILBERFORCE	W 84-57
1/4	URSULINE	L 56-49
1/8	at Notre Dame	L 89-48
1/12	MT. VERN. NAZ.	L 87-53
1/15	at Robt. Wes.	L 82-50
1/21	HOUGHTON	5:30 pm
1/22	DAEMEN	2 pm
1/27	at Point Park	5:30 pm
1/29	at Walsh	2 pm
2/1	CEDARVILLE	5:30 pm
2/5	CARLOW	3 pm
2/8	at Wilberforce	5:30 pm
2/12	at Ursuline	2 pm
2/15	WALSH	7 pm
2/19	at Mt. Vern. Naz.	2 pm

**MT. VERNON NAZ. (3-3)**

11/22	at Wilberforce	W 87-62
12/4	NOTRE DAME	L 69-60
12/14	at Ursuline	W 81-61
1/4	at Cedarville	L 78-50
1/12	at Malone	W 87-53
1/15	at Walsh	L 63-45
1/21	POINT PARK	5:30 pm
1/22	CARLOW	2 pm
1/28	at Daemen	5:30 pm
1/29	at Robt. Wes.	2 pm
2/1	at Wilberforce	5:30 pm
2/5	HOUGHTON	2 pm
2/8	at Notre Dame	7:30 pm
2/12	CEDARVILLE	2 pm
2/15	URSULINE	5:30 pm
2/19	MALONE	2 pm

**NOTRE DAME OH (5-1)**

11/9	at Carlow	W 74-47
11/30	URSULINE	W 87-65
12/4	at Mt. Vern. Naz.	W 69-60
1/4	at Wilberforce	W 91-47
1/8	MALONE	W 89-48
1/15	at Daemen	L 53-49
1/21	ROBT. WES.	6 pm
1/22	HOUGHTON	2 pm
1/29	at Point Park	1 pm
2/1	at Ursuline	7 pm
2/5	WALSH	2 pm
2/8	MT. VERN. NAZ.	7:30 pm
2/10	CEDARVILLE	5:30 pm
2/12	WILBERFORCE	2 pm
2/15	at Malone	5:30 pm
2/19	at Cedarville	5:30 pm

**POINT PARK (2-4)**

11/30	WALSH	L 70-63
12/7	HOUGHTON	W 59-47
1/4	at Carlow	W 64-44
1/11	at Daemen	L 95-58
1/15	CEDARVILLE	L 70-59
1/18	ROBT. WES.	L 70-43
1/21	at Mt. Vern. Naz.	5:30 pm
1/22	at Wilberforce	2 pm
1/27	MALONE	5:30 pm
1/29	NOTRE DAME	1 pm
2/1	at Walsh	6 pm
2/5	at Ursuline	2 pm
2/8	at Robt. Wes.	6 pm
2/12	CARLOW	2 pm
2/15	at Houghton	6 pm
2/19	DAEMEN	2 pm

**ROBT. WESLEYAN (4-2)**

11/16	HOUGHTON	W 76-61
12/7	DAEMEN	L 75-58
1/4	at Walsh	L 88-66
1/8	CARLOW	W 79-62
1/15	MALONE	W 82-50
1/18	at Point Park	W 70-43
1/21	at Notre Dame	6 pm
1/22	at Ursuline	2 pm
1/28	WILBERFORCE	6 pm
1/29	MT. VERN. NAZ.	2 pm
2/1	at Houghton	6 pm
2/5	at Cedarville	5:30 pm
2/8	POINT PARK	6 pm
2/12	WALSH	2 pm
2/15	at Daemen	5:30 pm
2/19	at Carlow	2 pm

**URSULINE (2-4)**

11/30	at Notre Dame	L 87-65
12/4	at Cedarville	L 98-49
12/14	MT. VERN. NAZ.	L 81-61
1/4	at Malone	W 56-49
1/11	WILBERFORCE	W 76-73
1/15	at Houghton	L 74-51
1/21	DAEMEN	7 pm
1/22	ROBT. WES.	2 pm
1/27	at Walsh	4 pm
1/29	at Carlow	4 pm
2/1	NOTRE DAME	7 pm
2/5	POINT PARK	2 pm
2/8	CEDARVILLE	7 pm
2/12	MALONE	2 pm
2/15	at Mt. Vern. Naz.	5:30 pm
2/19	at Wilberforce	2 pm

**Your ad here?**

**Promote your business!**

**Contact Jeff Bolender at 937-766-4136**

**WALSH (5-1)**

11/30	at Point Park	W 70-63
12/4	at Daemen	L 68-66
1/4	ROBT. WES.	W 88-66
1/11	at Houghton	W 72-66
1/15	MT. VERN. NAZ.	W 63-45
1/18	CARLOW	W 102-49
1/22	at Cedarville	5:30 pm
1/25	at Wilberforce	5:30 pm
1/27	URSULINE	6 pm
1/29	MALONE	2 pm
2/1	POINT PARK	6 pm
2/5	at Notre Dame	2 pm
2/8	DAEMEN	6 pm
2/12	at Robt. Wes.	2 pm
2/15	at Carlow	7:30 pm
2/19	HOUGHTON	2 pm

**OTHER GAMES TODAY in the AMC**

POINT PARK at WILBERFORCE, 12 pm

ROBERTS WESLEYAN at URSULINE, 2 pm

HOUGHTON at NOTRE DAME, 2 pm

DAEMEN at MALONE, 2 pm

CARLOW at MT. VERN. NAZ., 2 pm

**AMERICAN MIDEAST CONFERENCE**

**WILBERFORCE (1-5)**

11/22	at Mt. Vern. Naz.	L 87-62
12/4	at Malone	L 84-57
12/7	CEDARVILLE	L 67-46
1/4	NOTRE DAME	L 91-47
1/11	at Ursuline	L 76-73
1/15	at Carlow	W 55-44
1/22	POINT PARK	2 pm
1/25	WALSH	5:30 pm
1/28	at Robt. Wes.	6 pm
1/29	at Houghton	2 pm
2/1	MT. VERN. NAZ.	5:30 pm
2/5	DAEMEN	6 pm
2/8	MALONE	5:30 pm
2/12	at Notre Dame	2 pm
2/15	at Cedarville	5:30 pm
2/19	URSULINE	2 pm

**CRELLIN PLUMBING**

QUALITY SERVICE for 50 YEARS 1960 - 2010

"A broken cistern cannot hold water." Jeremiah 2:13

**(937) 325-8006**



## AMC Women's Basketball Standings

(through 1/18/11)	AMC			OVERALL			H	A	N	Streak
	W	L	Pct.	W	L	Pct.				
Daemen	7	0	1.000	17	3	.850	11-1	3-2	3-0	W7
<b>CEDARVILLE</b>	<b>5</b>	<b>0</b>	<b>1.000</b>	<b>14</b>	<b>4</b>	<b>.778</b>	<b>6-2</b>	<b>6-2</b>	<b>2-0</b>	<b>L1</b>
Walsh	5	1	.833	14	4	.778	6-3	8-1	0-0	W9
Notre Dame	5	1	.833	14	5	.737	5-2	6-2	3-1	L1
Roberts Wesleyan	4	2	.667	11	7	.611	9-4	2-2	0-1	W3
Mt. Vernon Nazarene	3	3	.500	12	5	.706	5-1	7-3	0-1	L1
Point Park	2	4	.333	10	7	.588	6-3	3-3	1-1	L3
Ursuline	2	4	.333	5	14	.263	4-4	1-7	0-3	L1
Houghton	2	5	.286	7	10	.412	7-3	0-7	0-0	W1
Malone	1	5	.167	5	14	.263	1-3	3-9	1-2	L4
Wilberforce	1	5	.167	2	18	.100	1-3	1-11	0-4	W1
<b>Carlow</b>	<b>1</b>	<b>8</b>	<b>.111</b>	<b>7</b>	<b>10</b>	<b>.412</b>	<b>2-5</b>	<b>3-5</b>	<b>2-0</b>	<b>L2</b>



eat fresh.

13 E. Chillicothe St., Cedarville, OH

766-7299

"We Back the Jackets!"



**Daemen's Soroka keeps posting superior weeks**

CEDARVILLE, Ohio - Daemen forward Sarah Soroka is the AMC Player of the Week in women's basketball for games played on Jan. 10-16.

Soroka, a 6-foot-1 senior from East Aurora, N.Y., averaged 23.5 points, 12 rebounds, and 5 blocks to lead the NAIA Division II #12 Lady Wildcats to a pair of impressive AMC victories.

Soroka exploded for 30 points, 12 rebounds, and three blocks during a 95-58 dismantling of Point Park. She totaled 17 points, 12 boards, and seven rejections in a 53-49 decision over Notre Dame, who was receiving votes in the national poll.

For the week, Soroka shot 50 percent from the field and 53 percent from the line. She added three assists and three steals.

Daemen is 17-3 overall and 7-0 AMC.



Sarah Soroka

**Other Player of the Week nominees:**

Ashley Dupler (Houghton), Alexis Harkins (Mount Vernon Nazarene), Jessie Miller (Walsh), Joncelyn Peterkin (Point Park), **Aubrey Siemon (Cedarville)**.

**Cedarville chosen to repeat as AMC basketball champion**

CEDARVILLE, Ohio - The Cedarville University women have been selected to win the 2010-11 American Midwest Conference basketball title. The defending champions earned the nod in a pre-season poll of the league's coaches.

Cedarville picked up 10 first-place votes and totaled 140 points to grab the top spot in the women's voting. The Lady Jackets were 27-6 last winter claimed the AMC regular season crown with a 17-2 mark, and advanced to the second round of the NAIA Division II National Tournament.

Walsh was awarded the other two first-place votes and finished second with 126 points. The Cavaliers, 24-10 overall and 14-5 AMC, won the conference tournament to earn an automatic bid to the national tournament.

Daemen (119 points) is picked to finish third. Rounding out the top five are Mount Vernon Nazarene (109) and Notre Dame (100).

**WALLACE & TURNER, INC.**



INSURANCE—SINCE 1870

616 N. LIMESTONE ST.  
SPRINGFIELD, OHIO 45503

**937-324-8492**



thru Jan. 18, 2011

**SCORING**

Player-Team	Yr	G	FG	3FG	FT	Pts	Avg
Soroka, Sarah-DAE	SR	19	179	30	77	465	24.5
Henderson, Ashley-PPU	SR	17	94	19	90	297	17.5
Himes, Amanda-MVN	SR	17	113	0	70	296	17.4
Dupler, Ashley-HOU	SR	17	112	0	41	265	15.6
Berry, Katie-WAL	SR	18	91	16	62	260	14.4
Siemon, Aubrey-CED	SR	17	85	0	73	243	14.3
Lewis, Danielle-WIL	JR	20	102	21	58	283	14.2
Kittle, Amy-MAL	SR	19	78	27	82	265	13.9
Hurley, Rachel-CED	SR	18	88	39	22	237	13.2
Jenerette, Kayla-CED	FR	17	78	36	25	217	12.8



Sarah Soroka

**REBOUNDING**

Player-Team	Yr	G	OFF	DEF	TOT	Avg/G
Siemon, Aubrey-CED	SR	17	56	150	206	12.1
Himes, Amanda-MVN	SR	17	77	124	201	11.8
Lindsey, Danielle-CAR	SO	14	36	123	159	11.4
Dupler, Ashley-HOU	SR	17	51	119	170	10.0
Soroka, Sarah-DAE	SR	19	46	119	165	8.7
Burke, Bridgette-DAE	SR	19	31	127	158	8.3
Wilson, Allyson-MAL	SR	19	47	106	153	8.1
Peterkin, Joncelyn-PPU	JR	17	65	69	134	7.9
Taylor, Jaylene-URS	FR	19	46	100	146	7.7
McNally, Kealy-NDC	SR	18	42	92	134	7.4



Aubrey Siemon

**FIELD GOAL PCT. (min. 4 made per game)**

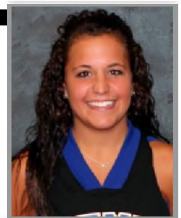
Player-Team	Yr	G	FG	FGA	Pct
Bedard, Cara-WAL	SR	18	91	152	.599
Siemon, Aubrey-CED	SR	17	85	155	.548
Burke, Bridgette-DAE	SR	19	91	167	.545
Soroka, Sarah-DAE	SR	19	179	339	.528
Hunter, Yvette-NDC	SR	19	98	188	.521
Jenerette, Kayla-CED	FR	17	78	154	.506
Peterkin, Joncelyn-PPU	JR	17	74	151	.490
Taylor, Jaylene-URS	FR	19	88	185	.476
Berry, Katie-WAL	SR	18	91	194	.469
McMillon, Brittany-RWC	SR	17	73	156	.468



Cara Bedard

**ASSISTS**

Player-Team	Yr	G	Assists	Avg/G
Nugent, Marybeth-DAE	SR	19	88	4.63
Fletcher, Sierra-MVN	JR	17	71	4.18
Austin, April-PPU	SO	17	66	3.88
Wilson, Tiffany-RWC	SR	17	66	3.88
Berry, Chanel-CAR	FR	17	59	3.47
Hurley, Rachel-CED	SR	18	61	3.39
Berry, Katie-WAL	SR	18	61	3.39
Cayton, Kara-CED	JR	17	53	3.12
Stoddard, Lindsay-DAE	FR	19	59	3.11
Lewis, Danielle-WIL	FR	20	61	3.05



Marybeth Nugent

**FREE THROW PCT. (min. 2 made per game)**

Player-Team	Yr	G	FTM	FTA	Pct
Harkins, Alexis-MVN	JR	17	45	51	.882
Siemon, Aubrey-CED	SR	17	73	83	.880
Schloz, Alison-MAL	SR	18	36	41	.878
Ciccarone, Daniella-WAL	FR	18	49	56	.875
Berry, Katie-WAL	SR	18	62	76	.816
Kovach, Kayla-WAL	JR	18	38	47	.809
McNally, Kealy-NDC	SR	18	59	76	.776
Bedard, Cara-WAL	SR	18	44	57	.772
Henderson, Ashley-PPU	SR	17	90	117	.769
Kittle, Amy-MAL	SR	19	82	108	.759



Alexis Harkins

**STEALS**

Player-Team	Yr	G	Steals	Avg/G
Fletcher, Sierra-MVN	JR	17	57	3.35
Henderson, Ashley-PPU	SR	17	46	2.71
Wilson, Tiffany-RWC	SR	17	46	2.71
Austin, April-PPU	SO	17	43	2.53
Berry, Katie-WAL	SR	18	44	2.44
Jenerette, Kayla-CED	FR	17	39	2.29
Wicks, Taryn-NDC	JR	12	24	2.00
Johnson, Lauren-MVN	SR	16	31	1.94
McNally, Kealy-NDC	SR	18	34	1.89
Payne, Tracy-NDC	SO	18	34	1.89



Sierra Fletcher



# Miller Printing Co.

PRINTERS & LITHOGRAPHERS

Cedarville University Sales Representative  
Bill Thompson 1-877-325-5503

From the Simplest Black and White Page To The Most  
Complex and Colorful Brochure Or Catalog

## WE DO IT ALL!



581 W. Leffel Lane • 937-325-5503  
A UNIT OF GRAPHIC PAPER PRODUCTS CORP.



ESTABLISHED 1802

(937) 767-5501

75 Water Street, Clifton, Ohio

[www.cliftonmill.com](http://www.cliftonmill.com)

Fresh Pure Chemical Free  
Drinking Water

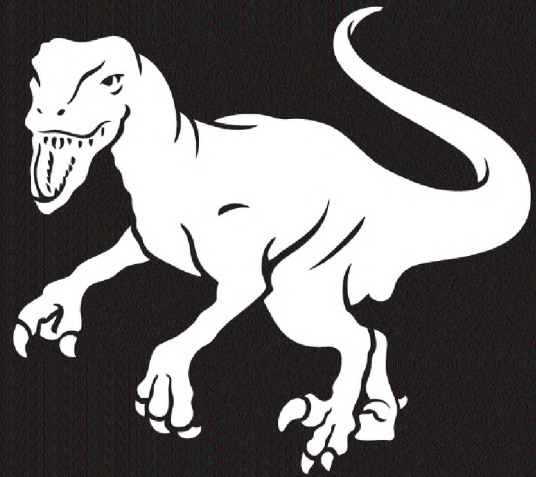
# Aqua Falls®

Free Delivery Home & Office

1-800-800-8124

Complimentary Trial Offer

- Cooler & Dispenser
- Sales & Rental



[creationmuseum.org](http://creationmuseum.org)

# CEDARVILLE SELF STORAGE

Located at 31 S. Miller St.  
Cedarville, OH 45314

## 937-766-9780

## Rollins Moving & Storage



**OHIO MOVING**  
SAME OR NEXT DAY DELIVERY

"MOVERS FOR THREE GENERATIONS"

National  
& World-wide  
pre-planned  
moving

Rollins for Moving

LOCAL • NATIONWIDE • WORLDWIDE WITH THE  
SAME QUALITY SERVICE  
PROFESSIONAL PACKING & CRATING

Rollins for Storage

WE INVITE YOU TO INSPECT OUR WAREHOUSE  
FULLY INSURED CONTAINERIZED STORAGE

Rollins for Care

FULL VALUE PROTECTION

1-800-826-8094

# Season Top 10 Leaders



## Points

- 967 Brittany Smart, 2006-07
- 890 Brittany Smart, 2005-06
- 805 Brittany Smart, 2004-05
- 743 Vicki Butler, 1979-80
- 714 Kirsten Rossotti, 2002-03
- 667 Amy Zehr, 1992-93
- 663 Kari Flunker, 2004-05
- 662 Kari Flunker, 2003-04
- 642 Kirsten Rossotti, 2001-02
- 574 Brittany Smart, 2003-04

## Scoring Average

- 28.4 Brittany Smart, 2006-07
- 27.5 Vicki Butler, 1979-80
- 27.0 Brittany Smart, 2005-06
- 24.7 Amy Zehr, 1991-92
- 23.9 Vicki Butler, 1978-79
- 21.8 Brittany Smart, 2004-05
- 21.0 Kirsten Rossotti, 2002-03
- 19.7 Vicki Butler, 1977-78
- 19.5 Kirsten Rossotti, 2001-02
- 18.7 Diane Rank, 1991-92

## Field Goals Made

- 333 Brittany Smart, 2006-07
- 323 Brittany Smart, 2005-06
- 318 Brittany Smart, 2004-05
- 279 Vicki Butler, 1979-80
- 274 Amy Zehr, 1992-93
- 258 Kirsten Rossotti, 2002-03
- 249 Kari Flunker, 2004-05
- 234 Kari Flunker, 2003-04
- 229 Kirsten Rossotti, 2001-02
- 218 Diane Rank, 1991-92

## Field Goal Pct. (4 FGM/G)

- .602 Lisa Campbell (168-279), 1983-84
- .601 Amy Zehr (274-456), 1992-93
- .600 Amy Zehr (153-255), 1990-91
- .584 Julie Nourse (142-243), 1997-98
- .584 Julie Nourse (202-346), 1998-99
- .570 Brittany Smart (318-558), 2004-05
- .562 Kristi Beougher (146-260), 2006-07
- .544 Amy Bathrick (143-263), 1996-97
- .542 Kari Flunker (249-459), 2004-05
- .538 Diane Rank (218-405), 1991-92
- .538 Kirsten Rossotti (164-305), 1998-99

## 3-Point Field Goals Made

- 99 Kari Flunker, 2003-04
- 95 Kari Flunker, 2004-05
- 82 Brittany Smart, 2006-07
- 78 Brittany Smart, 2005-06
- 74 Kari Flunker, 2002-03
- 72 Alison Lemon, 2008-09
- 70 Kari Flunker, 2001-02
- 67 Julie Stauffer, 2002-03
- 63 Stacie Travis, 2006-07
- 63 Alison Lemon, 2009-10

## 3-Point Field Goal Pct. (1 FGM/G)

- .503 Kari Flunker (99-197), 2003-04
- .492 Kari Flunker (95-193), 2004-05
- .490 Alison Lemon (72-147), 2008-09
- .463 Brittany Smart (37-80), 2004-05
- .459 Brittany Smart (78-170), 2005-06
- .457 Crystal Patrick (37-81), 1987-88
- .426 Heather French (55-129), 1998-99
- .416 Kari Flunker (74-178), 2002-03
- .412 Kari Flunker (70-170), 2001-02
- .407 Heather French (33-81), 1997-98

## Free Throws Made

- 219 Brittany Smart, 2006-07
- 196 Kirsten Rossotti, 2002-03
- 185 Vicki Butler, 1979-80
- 181 Kirsten Rossotti, 2001-02
- 166 Brittany Smart, 2005-06
- 152 Kirsten Rossotti, 1998-99
- 143 Aubrey Siemon, 2009-10
- 140 Kirsten Rossotti, 1999-2000
- 132 Brittany Smart, 2004-05
- 128 Emily Delimpo, 2003-04

## Free Throw Pct. (2 FTM/G)

- .874 Brittany Smart (166-190), 2005-06
- .866 Amanda Porter (71-82), 1999-2000
- .846 Kari Flunker (77-91), 2001-02
- .846 Brittany Smart (219-259), 2006-07
- .841 Brittany Smart (132-157), 2004-05
- .825 Melissa Hartman (104-126), 1994-95
- .817 Aubrey Siemon (143-175), 2009-10
- .812 Aubrey Siemon (95-117), 2008-09
- .809 Kirsten Rossotti (152-188), 1998-99
- .793 Julie Stauffer (88-111), 2001-02

## Rebounds

- 441 Aubrey Siemon, 2009-10
- 377 Amy Zehr, 1992-93
- 346 Emily Delimpo, 2003-04
- 342 Kirsten Rossotti, 2001-02
- 340 Kirsten Rossotti, 2002-03
- 336 Amy Zehr, 1991-92
- 326 Amy Bathrick, 1996-97
- 316 Emily Delimpo, 2004-05
- 297 Christine Copeland, 1994-95
- 294 Beth Goldsmith, 1984-85

## Assists

- 178 Kari Flunker, 2003-04
- 177 Kari Flunker, 2004-05
- 168 Kari Flunker, 2002-03
- 166 Joy Fagan, 1988-89
- 165 Karah Walton, 2004-05
- 163 Alison Lemon, 2009-10
- 159 Karah Walton, 2005-06
- 154 Linda Smart, 1983-84
- 144 Julie Stauffer, 2002-03
- 142 Brittany Smart, 2006-07

## Blocks

- 75 Heidi Peterson, 1981-82
- 55 Becky Cave, 1993-94
- 53 Becky Cave, 1995-96
- 53 Aubrey Siemon, 2009-10
- 51 Diane Rank, 1991-92
- 44 Aubrey Siemon, 2008-09
- 42 Diane Rank, 1990-91
- 39 Kirsten Rossotti, 1999-2000
- 37 Kirsten Rossotti, 2002-03
- 32 Becky Cave, 1992-93
- 32 Becky Cave, 1994-95

## Steals

- 134 Cindy Cremeans, 1995-96
- 93 Brittany Smart, 2006-07
- 89 Kari Flunker, 2001-02
- 88 Brittany Smart, 2003-04
- 88 Kari Flunker, 2004-05
- 87 Kari Flunker, 2002-03
- 87 Brittany Smart, 2004-05
- 85 Melissa Hartman, 1995-96
- 83 Karah Walton, 2005-06
- 81 Joy Fagan, 1988-89

# Career Top 10 Leaders



thru 1/18/11-

## Points

- 3,236 Brittany Smart, 2003-07
- 2,275 Kari Flunker, 2001-05
- 2,229 Kirsten Rossotti, 1998-2000, 01-03
- 2,103 Vicki Butler, 1976-80
- 1,760 Diane Rank, 1988-92
- 1,758 Alison Lemon, 2006-10
- 1,706 Julie Nourse, 1997-2001
- 1,678 Melissa Hartman, 1992-96
- 1,656 Julie Stauffer, 2000-04
- 1,642 Amy Zehr, 1989-93

## Scoring Average

- 22.8 Brittany Smart, 2003-07
- 22.1 Vicki Butler, 1976-80
- 17.0 Kirsten Rossotti, 1998-2000, 01-03
- 16.1 Diane Rank, 1988-92
- 16.0 Kari Flunker, 2001-05
- 15.9 Lynn Strickland, 1987-89
- 15.6 Amy Zehr, 1989-93
- 14.9 Chris Friesen, 1985-89
- 14.1 Julie Nourse, 1997-2001
- 13.7 Alison Lemon, 2006-10

## Field Goals Made

- 1,180 Brittany Smart, 2003-06
- 808 Kari Flunker, 2001-05
- 806 Vicki Butler, 1976-80
- 776 Kirsten Rossotti, 1998-2000, 01-03
- 703 Diane Rank, 1988-92
- 676 Julie Nourse, 1997-2001
- 663 Amy Zehr, 1989-93
- 612 Alison Lemon, 2006-10
- 603 Melissa Hartman, 1992-96
- 596 Emily Delimpo, 2002-06

## Field Goal Pct. (4 FGM/G)

- .603 Lisa Campbell (207-343), 1982-84
- .570 Amy Zehr (663-1163), 1989-93
- .531 Julie Nourse (676-1272), 1997-2001
- .524 Brittany Smart (1180-2250), 2003-07
- .517 Kirsten Rossotti (776-1500), 1998-2000, 01-03
- .516 Diane Rank (703-1362), 1988-92
- .516 Emily Delimpo (596-1155), 2002-06
- .514 Aubrey Siemon (471-916), 2007-11
- .502 Lynn Strickland (290-578), 1987-89
- .498 Kari Flunker (808-1621), 2001-05

## 3-Point Field Goals Made

- 338 Kari Flunker, 2001-05
- 245 Brittany Smart, 2003-07
- 214 Julie Stauffer, 2000-04
- 206 Alison Lemon, 2006-10
- 193 Rachel Hurley, 2007-11
- 154 Melissa Hartman, 1992-96
- 153 Karah Walton, 2003-06
- 139 Stacie Travis, 2003-07
- 139 Kara Cayton, 2008-11
- 138 Pattie Schryer, 1998-2002

## 3-Point Field Goal Pct. (0.5 FGM/G)

- .458 Kari Flunker (338-738), 2001-05
- .439 Crystal Patrick (43-98), 1984-88
- .412 Brittany Smart (245-595), 2003-07
- .390 Heather French (127-326), 1995-99
- .373 Alison Lemon (206-552), 2006-10
- .368 Kara Cayton (139-378), 2008-11
- .366 Stacie Travis (139-380), 2003-07
- .362 Rachel Hurley (193-533), 2007-11
- .352 Julie Stauffer (214-608), 2000-04
- .352 Karah Walton (153-435), 2003-07
- .350 Bayley Nosal (108-309), 2005-09

## Free Throws Made

- 669 Kirsten Rossotti, 1998-2000, 01-03
- 631 Brittany Smart, 2003-07
- 491 Vicki Butler, 1976-80
- 411 Aubrey Siemon, 2007-11
- 363 Emily Delimpo, 2002-06
- 354 Diane Rank, 1988-92
- 354 Julie Nourse, 1997-2001
- 328 Alison Lemon, 2006-10
- 321 Kari Flunker, 2001-05
- 318 Melissa Hartman, 1992-96

## Free Throw Pct. (2 FTM/G)

- .837 Brittany Smart (631-754), 2003-07
- .813 Kari Flunker (321-395), 2001-05
- .800 Aubrey Siemon (411-514), 2007-11
- .763 Melissa Hartman (318-417), 1992-96
- .756 Julie Stauffer (270-357), 2000-04
- .755 Julie Nourse (354-469), 1997-2001
- .723 Kirsten Rossotti (669-925), 1998-2000, 01-03
- .699 Alison Lemon (328-469), 2006-10
- .695 Diane Lichtensteiger (137-197), 1978-81
- .689 Emily Delimpo (363-527), 2002-06

## Rebounds

- 1,166 Aubrey Siemon, 2007-11
- 1,159 Kirsten Rossotti, 1998-2000, 01-03
- 1,074 Emily Delimpo, 2002-06
- 1,049 Amy Zehr, 1989-93
- 951 Diane Rank, 1988-92
- 944 Brittany Smart, 2003-07
- 919 Chris Friesen, 1985-89
- 918 Julie Nourse, 1997-2001
- 908 Christine Copeland, 1991-95
- 908 Kristi Beougher, 2003-07

## Assists

- 644 Kari Flunker, 2001-05
- 545 Brittany Smart, 2003-07
- 513 Karah Walton, 2003-07
- 477 Alison Lemon, 2006-10
- 467 Julie Stauffer, 2000-04
- 456 Melissa Hartman, 1992-96
- 398 Heather French, 1995-99
- 335 Amanda Porter, 1997-2001
- 321 Linda Smart, 1981-84
- 316 Charity Cole, 1996-2000

## Blocks

- 172 Becky Cave, 1992-96
- 149 Diane Rank, 1988-92
- 142 Aubrey Siemon, 2007-11
- 129 Kirsten Rossotti, 1998-2000, 01-03
- 88 Molly Earley, 2000-04
- 75 Heidi Peterson, 1980-84
- 67 Karah Walton, 2003-07
- 58 Christine Copeland, 1992-96
- 49 Kristi Beougher, 2003-07
- 48 Brittany Smart, 2003-07

## Steals

- 345 Brittany Smart, 2003-07
- 331 Kari Flunker, 2001-05
- 293 Melissa Hartman, 1992-96
- 252 Alison Lemon, 2006-10
- 250 Karah Walton, 2003-07
- 230 Amanda Porter, 1997-2001
- 214 Cindy Cremeans, 1994-96
- 184 Amy Zehr, 1989-93
- 177 Heather French, 1995-99
- 173 Chris Friesen, 1985-89



# The Flower


“YOUR ALL OCCASION FLORIST”

57 W. Main St., Downtown Xenia

AREA WIDE DELIVERY

372-1436

www.flowerstopofxenia.com



# Docton Animal Clinic

10 Kinsey Road  
Xenia, Ohio 45385  
937-372-6391



# *Hidy* FAMILY of CARS

- Honda
- Hyundai
- Ford
- Acura

**937-426-9564**

## *Gourmet Gift Baskets*

Custom made gift baskets  
available at:

**1-866-324-9774**

[www.thebestgourmetgiftbaskets.com](http://www.thebestgourmetgiftbaskets.com)

20 N. Fountain, Springfield



155 W. Leffel  
Lane

Springfield, OH  
45506

**937-325-5356**

## RAYMOND JAMES<sup>®</sup> & ASSOCIATES, INC.

### Lou Vision

Vice President, Investments

### Nate Sowder, CRPC<sup>®</sup>, WMS

Financial Advisor



MARKETS FLUCTUATE. RELATIONSHIPS SHOULDN'T.

WE'RE WITH YOU EVERY STEP OF THE WAY.

MEET US ON CAMPUS OR VISIT OUR OFFICE AT

THE GREENE. CALL 937.431.6700 TODAY!



**LEGACY  
VILLAGE**

*Retirement  
Community*

Independent  
Homes

937.372.8992

Assisted  
Living

937.372.0359

## No. 1 Davenport in Command of NAIA Division II Women's Basketball Coaches' Top 25 Poll

KANSAS CITY, Mo. - No. 1 Davenport (Mich.) maintains a grip on the top spot of the NAIA Division II Women's Basketball Coaches' Top 25 Poll. For the second-straight week, the undefeated Panthers were a unanimous selection, collecting all 15 possible first-place votes and tallying 405 points. Northwestern (Iowa) grabbed a top-five win and holds steady at No. 2 with 392 points. With 377 points, Sioux Falls (S.D.) slides up into the No. 3 spot. Rounding out the top five is No. 4 Morningside (Iowa) with 367 points, along with Saint Francis (Ind.) and Black Hills State (S.D.) tied at No. 5 with 342 points each.

Since taking over at No. 1 in the Jan. 10 poll, the top-ranked Panthers have ran away with two blowout victories over Wolverine-Hoosier Athletic Conference opponents Northwestern Ohio and Aquinas (Mich.). Davenport (21-0, 7-0 WHAC) defeated Northwestern Ohio 102-63 on Jan. 12 and extended its winning streak to 21 games with a win over Aquinas 84-59 on Jan. 15.

Northwestern (19-1, 10-0 Great Plains Athletic Conference) cemented its No. 2 position on the poll with a win on the road at No. 3 Sioux Falls on Jan. 11. With a 40-36 lead at halftime, the Red Raiders put up 57 points in the second half to secure a 97-83 victory. Northwestern returned home and recorded a 101-62 win against Doane (Neb.) on Jan. 15. No. 3 Sioux Falls had the toughest slate of the week, going head-to-head with two top-five squads in No. 2 Northwestern and No. 4 Morningside. The Cougars were able to rebound from the 97-83 loss with a 70-66 win over the fourth-ranked Mustangs on Jan. 15.

Morningside, who won the first meeting against Sioux Falls 62-61 on Dec. 1, came up empty-handed in the second dual. The Mustangs swap spots with the Cougars, but remain a stronghold in the top-five at 16-3, 7-2 GPAC. Morningside finished out the weekend with a 63-52 home win over Dickinson State (N.D.) on Jan. 16.

Saint Francis reappears in the top-five for the first time since the Nov. 29 poll where it sat at No. 4. The Cougars are riding an eight-game winning streak with recent wins over then-No. 6 Indiana Wesleyan and Grace (Ind.). Julie Seiss led the charge for Saint Francis with 29 points and five rebounds in the 76-65 win over Indiana Wesleyan on Jan. 12. The team improved to 17-4, 6-1 Mid-Central College Conference with a 21-point road win at Grace on Jan. 15.

Black Hills State (S.D.), who was ranked fourth in the preseason poll is making its first return to the top-five since Oct. 25. The Yellow Jackets have won nine straight games including back-to-back games on the road last week against Mayville State (N.D.) and Dakota State (S.D.). They defeated Mayville State 74-63 on Jan. 14 and then posted a 72-41 victory over Dakota State on Jan. 15.

Twelve conferences are represented on the Top 25 poll, led by the GPAC with five teams: Northwestern, Sioux Falls, Morningside, No. 18 Briar Cliff (Iowa) and No. 22 Mount Marty (S.D.). Three conferences, American Midwest Conference, Kansas Collegiate Athletic Conference and MCCC had a trio of teams garner national ranking.

No. 7 Kansas Wesleyan had its 16-game winning streak broken in a 78-75 loss at home to Friends (Kan.) on Jan. 13.

Five teams previously unranked found their way into the Top 25 this week. Briar Cliff jumped all the way up to No. 18. Joining the Chargers were No. 20 Northwest (Wash.), No. 21 Tennessee Wesleyan, No. 23 Indiana Southeast and No. 25 Marian (Ind.). Northwest, Tennessee Wesleyan and Marian are making their first appearances on the poll this season.

## NAIA II National Rankings

NAIA Division II Women's Basketball Top 25 Poll #5 • Jan. 17, 2011

Rank	Last Poll	School	2010-11 Record	Pts
1	1	Davenport University (Mich.)	21-0	405
2	2	Northwestern College (Iowa)	19-1	392
3	4	University of Sioux Falls (S.D.)	17-2	377
4	3	Morningside College (Iowa)	16-3	367
T5	8	University of Saint Francis (Ind.)	17-4	342
T5	7	Black Hills State University (S.D.)	15-3	342
7	5	Kansas Wesleyan University	18-1	320
8	6	Indiana Wesleyan University	17-3	315
9	9	<b>Cedarville University (Ohio)</b>	<b>14-3</b>	<b>310</b>
10	11	College of the Ozarks (Mo.)	14-4	281
11	12	Daemen College (N.Y.)	17-3	277
12	13	Iowa Wesleyan College	14-4	256
13	10	Saint Ambrose University (Iowa)	15-3	241
14	14	Cornerstone University (Mich.)	16-4	240
15	14	Sterling College (Kan.)	15-3	233
16	17	<b>Walsh University (Ohio)</b>	<b>13-4</b>	<b>213</b>
17	16	Minot State University (N.D.)	12-4	180
18	RV	Briar Cliff University (Iowa)	13-8	168
19	20	Northwest University (Wash.)	13-4	151
20	RV	Southwestern College (Kan.)	13-5	134
21	RV	Tennessee Wesleyan College	13-3	122
22	19	Mount Marty College (S.D.)	15-6	109
23	RV	Indiana University-Southeast	13-5	108
24	22	Cardinal Stritch University (Wisc.)	15-4	78
25	RV	Marian University (Ind.)	12-6	76

Others Receiving Votes:

Jamestown (N.D.) 65; Concordia (Ore.) 63; Bethel (Ind.) 52; Montreat (N.C.) 36; Brescia (Ky.) 32; Ave Maria (Fla.) 29; Dordt (Iowa) 24; Union (Ky.) 23; Mount Mercy (Iowa) 22; Notre Dame (Ohio) 17; Valley City State (N.D.) 11; Concordia (Mich.) 6; Huntington (Ind.) 6; Peru State (Neb.) 4; Florida Memorial 1; Corban (Ore.) 1; Indiana Northwest 1; William Penn (Iowa) 1; Taylor (Ind.) 1; Grace (Ind.) 1.

**MATT FRANZ**  
*Photography*

*"Dedicated to providing  
high quality  
photographs of your event!"*

[www.mattfranz.com](http://www.mattfranz.com) • [matt@mattfranz.com](mailto:matt@mattfranz.com)

**(937) 401-0079**

## Trent E. Licklider, CPA

- *Income Tax Preparation*
- *Payroll Service*
- *Free Consultations*
- *Personal, Quality Attention*
- *Open Year-Round*

**937-372-7500**

**25 S. Detroit St., Xenia, OH 45385**  
**[cpa@licklidercpa.com](mailto:cpa@licklidercpa.com)**

< Online Apparel Programs >

< **kiosk** >  
virtual stores :)

[www.kioskvs.com](http://www.kioskvs.com)

**We Support Cedarville University Athletics!**



Springfield, Ohio

937-325-8480

## Mom and Dad's Dairy Bar & Grille

320 N. Main St.,  
Cedarville, OH

(937)766-2046

*Offering Game Night Specials*



## Christian Camp & Retreat Center

- Registration for summer camp is open
  - We hire Cedarville students for summer ministry
  - Looking for a great family vacation.....?
- How about family camp?

**740-778-CAMP**

**[www.sciotohills.com](http://www.sciotohills.com)**

## Hightech Automotive

*Appointments for sick cars  
and unhappy owners;*

**937.766.9852**

**105 West Xenia Avenue  
Cedarville, OH**

# Richey



M.A. RICHEY MFG.  
P.O. BOX 166  
MICHIGANTOWN, IN 46057  
1-800-333-PITS (7487)  
765-249-2426 • FAX: 765-249-3010

STEPHEN GRIFFY  
STEPHEN@RICHEYATHLETICS.COM  
**RICHEYATHLETICS.COM**



## Security for Your Family

Life insurance from Northwestern Mutual provides financial protection for your family from a company consistently receiving the best possible insurance financial strength ratings from A.M. Best (A++, 7/2009) and Fitch Ratings (AAA, 6/2009). The cash value of the policy can be used to help pay for college, to supplement your income or for emergencies. And you'll always know that your family is secure.

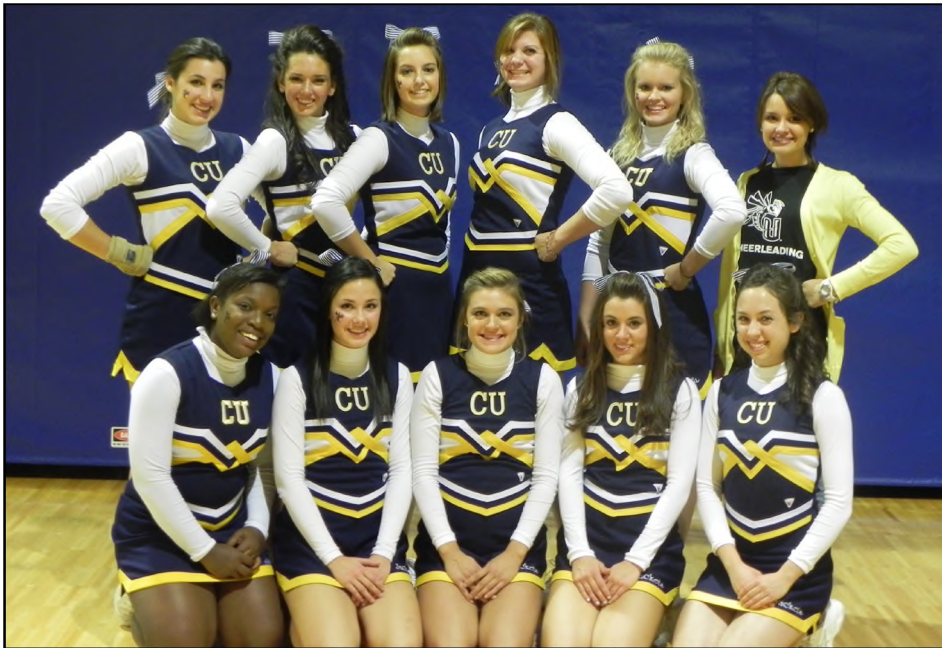


**Eric M Anderson**  
Financial Advisor  
70 Birch Aly Ste 210  
Beavercreek  
(937) 427-7170

**Northwestern Mutual**  
insurance / investments / ideas™

05-2644 The Northwestern Mutual Life Insurance Company, Milwaukee, WI (Northwestern Mutual). Eric M Anderson is an insurance agent of Northwestern Mutual (life and disability insurance, annuities) and a Registered Representative and Investment Adviser Representative of Northwestern Mutual Investment Services, LLC (securities), a subsidiary of Northwestern Mutual, broker-dealer, registered investment advisor and member FINRA and SIPC.

## 2010-11 Lady Jacket Cheerleaders



- Kasandra Chambers  
Hebron, KY
- Christina Cruthfield  
Upper Marlboro, MD
- Autumn Houser  
Athens, PA
- Alicia Iaffallando  
Minneapolis, MN
- Meg Navarro-Gupta  
Ypsilanti, MI
- Ashley Peterson  
Troy, OH
- Katie Siegle  
Macomb, MI
- Ashley Smith  
Lexington, KY
- Stephanie Strejc  
Elmhurst, IL
- Hayley Studebaker  
New Carlisle, OH



The Cedarville University Spirit Unit consists of the Cheerleaders and Mascot! The unit takes great pride in giving 100% at Lady Jacket basketball games. This group is dedicated to upholding the rich traditions of Cedarville University through leadership skills, dedication, commitment, community involvement, mentorship to the youth of today and promoting school spirit through sporting events, exhibitions and competitive events.

# GIVE HER THE RING SHE'S ALWAYS DREAMED ABOUT.



AND GET THE MOST  
BEAUTIFUL ENGAGEMENT RING  
FOR YOUR MONEY.

**GUARANTEED.\***



# DIAMOND CELLAR®

6280 Sawmill Road, Dublin, Ohio 43017 • Easton Town Center, 3960 New Bond Street, Columbus, Ohio 43219

\*Price Guarantee information is available at [www.diamondcellar.com](http://www.diamondcellar.com).



# 2010-11 Cedarville University Lady Jackets



**4**



**Kayla  
Jenerette**  
5-5, Guard  
Freshman  
Greenville, SC

**5**



**Becky  
Orchard**  
5-10, Guard  
Freshman  
Loudonville, OH

**11**



**Rachel  
Hurley**  
5-4 Guard  
Senior  
Indiana, PA

**12**



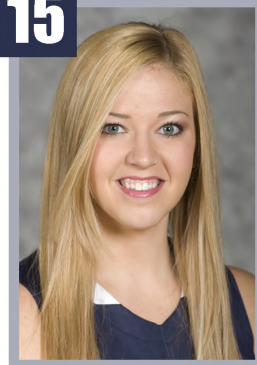
**Aubrey  
Siemon**  
6-1, Center  
Senior  
Springfield, OH

**14**



**Heidi  
Ansiel**  
5-7, Guard  
Freshman  
Warrenville, IL

**15**



**Caitlyn  
Brooks**  
6-0, Forward  
Senior  
Centerville, OH

**20**



**Jenna  
Williams**  
5-8, Forward  
Freshman  
Xenia, OH

**21**



**Lydia  
Miller**  
5-7, Guard  
Senior  
Berlin, OH

**22**



**Jenna  
Smith**  
6-2, Center  
Senior  
Cedarville, OH

**23**



**Kara  
Cayton**  
5-4, Guard  
Junior  
South Webster, OH



**Combs Interior  
Specialties Inc.**

471 Funderburg Road  
Fairborn, Ohio 45324  
Phone: 937-879-2047  
Fax: 937-879-0003  
Cell: 937-604-3134

Mark Combs - CEO/President  
mcombs@combsinterior.com

[www.combsinterior.com](http://www.combsinterior.com)

**30**



**Kathy  
Jakucki**  
5-11, Forward  
Junior  
Vineland, NJ

**33**



**Deborah  
Chandler**  
6-0, Forward  
Freshman  
Southlake, TX



**Tim Filler**  
President

Phone: 518-494-6247  
Fax: 518-494-6312  
Email: [tfiller@nycap.rr.corr](mailto:tfiller@nycap.rr.corr)

Providing a full range of  
promotional products!

**GO JACKETS!**