

---

Volleyball Programs

Volleyball

---

10-28-2011

## Cedarville vs. Alderson-Broaddus

Cedarville University

Follow this and additional works at: [https://digitalcommons.cedarville.edu/volleyball\\_programs](https://digitalcommons.cedarville.edu/volleyball_programs)



Part of the [Higher Education Commons](#), and the [Sports Studies Commons](#)

---

### Recommended Citation

Cedarville University, "Cedarville vs. Alderson-Broaddus" (2011). *Volleyball Programs*. 45.  
[https://digitalcommons.cedarville.edu/volleyball\\_programs/45](https://digitalcommons.cedarville.edu/volleyball_programs/45)

This Program is brought to you for free and open access by DigitalCommons@Cedarville, a service of the Centennial Library. It has been accepted for inclusion in Volleyball Programs by an authorized administrator of DigitalCommons@Cedarville. For more information, please contact [digitalcommons@cedarville.edu](mailto:digitalcommons@cedarville.edu).



# GAME DAY

Friday, Oct. 28, 2011 • 6 pm  
vs. Alderson-Broaddus College



## INSIDE GAME DAY

|                               |   |
|-------------------------------|---|
| Lady Jacket Volleyball Blog   | 2 |
| Lady Jacket Profile           | 2 |
| CU All-Time Leaders           | 2 |
| Cedarville Schedule/Results   | 3 |
| Tonight's Match Info          | 3 |
| Cedarville Roster/Quick Facts | 4 |
| NCAA II National Rankings     | 4 |
| Alderson-Broaddus Roster      | 5 |
| CU All-Time VB Roster         | 6 |
| 2011 Lady Jacket VB Stats     | 7 |
| CU All-Time Series Records    | 8 |
| Meet the 2011 Lady Jackets    | 8 |



After the game  
Great meals are waiting for you in  
Beavercreek

It is our pleasure and intention to cater your meeting, event, or party with the same fresh food served hot or cold which ever you prefer.  
We will be on time and ready to make your event a success.  
Looking forward to serving you!  
Visit our website today or find us on Facebook.  
On line ordering is now available.

Beavercreek Free Standing Unit  
2360 North Fairfield Road  
Beavercreek, Ohio 45431  
937.320.1229  
[www.cfarestaurant.com/beavercreek/home](http://www.cfarestaurant.com/beavercreek/home)

The Mall at Fairfield Commons  
2727 North Fairfield Road  
Beavercreek, Ohio 45431  
937.320.1224  
[www.cfarestaurant.com/fairfieldcommons/home](http://www.cfarestaurant.com/fairfieldcommons/home)



### Comfort Suites

121 Raydo Circle  
Springfield, OH 45506  
**937-322-0707**

- All Suite Rooms
- Hot Deluxe Breakfast

Only 12 miles from CU!

Proud to support the Yellow Jackets!!



13 E. Chillicothe St.,  
Cedarville, OH

**766-7299**

# Lady Jacket Volleyball Blog

October 24, 2011

Wow, what a week it has been for the Cedarville volleyball team! I would compare this week to a crazy roller coaster ride, some very low points but also some very high points. Let's start with the lows because I am the type of person who always wants the bad news first, so here goes.



Monday practice was run a little differently than an ordinary practice. We started with a team talk about mental toughness. This is an area where we are weak as a team so we discussed leadership and what to do in tough situations. After this talk, I think we felt more prepared to deal with tension during matches. Coach Walters felt that we also needed to "discuss" responsibility. Coach's definition of discussion is very different than you might think. Basically, we "discussed" responsibility between suicides that seemed unending. The object of our discussion was to remind the team of our goals not just on the court but also in the classroom, in the locker room and in our lives as a whole. The lesson was needed and provided incentive to finish the season in a responsible and respectful way.

Low point number two came on Tuesday when we played Malone for our Dig Pink benefit night. The Dig Pink part went well and we are grateful for that. However, the match did not go as well as we would have hoped. As you may already know, we beat Malone earlier in the season at their place in three sets. That was a great match! Unfortunately, they returned the favor by beating us in three in our gym. The scores of the sets were 25-20, 25-17 and 26-24. We played well and fought hard in the last set but did not come out on top. This match was disappointing to say the least.

Ok, that's enough lows don't you think? Let's talk about the high points of the week! Wednesday's practice was awesome! I think it was exactly what we needed coming off of Monday and Tuesday. We split into two teams, Team Walters and Team Wenny, and had a super fun game day. This included dodge ball, round up and some volleyball too! It was a great time for our team to refresh and recharge for the rest of the season! Little did we know, that practice actually had a point besides having fun and that was to try out a new line-up! We switched a few players around to hopefully improve the team and to surprise other teams with a roster different than their scouting reports.

Friday's match against Notre Dame was another high point of the week. We got the chance to try out our new line-up and we won in three! Woo! The scores were 25-18, 25-17 and 25-19. But even more exciting than the win, was what happened after the match was over! For the first time in four years, Notre Dame let us pray with them after the match! We were super pumped about this opportunity and it was a good reminder of our most important goals.

Overall, it was a crazy week but I think we have come out better for having been through it! We are playing Walsh on Tuesday and we are looking to build on the latter half of the week as we push toward the end of our season. We appreciate your support through the highs and lows and we are excited about the coming weeks!

For His Glory! Go Jackets!

Stephanie Rogers is a sophomore middle hitter from Carmel, Ind. majoring in communications.

## Lady Jacket Profile



**Erica Bartholomew**  
**5-5 Junior, Setter**  
**Coloma, MI • Coloma High School**

**#1**

Erica Bartholomew begins her third season with the Lady Jacket volleyball squad.....will again serve as a co-captain this upcoming year.....one of seven players to appear in all 38 matches in 2010.....dished out 1,417 assists - bested her previous season record for the tenth-most in a single season.....ranks fourth all-time at CU with 3,253 career assists.....tied a career-high with 57 assists in a match against Spring Arbor at the NCCAA Midwest Regional.....produced 50+ assists in four other contests.....a .354 assist percentage ranks seventh all-time at Cedarville.....led squad with 30 service aces.....tallied a career-best five service aces at West Liberty.....posted 179 digs during the campaign - fourth-best on the team.....registered a career-high 13 digs at Mount Vernon Nazarene in the American Midwest Conference Tournament semifinals.....named to the AMC Second Team.....earned NCCAA Midwest Region Honorable Mention.

**2009** - Appeared in all 38 matches as the team's setter.....tallied 1,403 assists - tenth-highest ever in a single season at CU.....averaged 9.42 assists per set.....added 229 digs, 41 kills and 18 service aces.....handed out a season-high 57 assists in a five-set match versus Indiana-Southeast.....posted double figure assists in 37 of the 38 matches.....produced a season-best four service aces at Ohio Dominican.....six matches in double figures for digs including a season-high 12 in a victory over Indiana-East during the Cedarville Invitational.....served 22 times without an error against Urbana.....member of the AMC Freshman Team.....NCCAA Midwest Region and AMC Honorable Mention.

**High School** - Registered a stellar four-year volleyball career at Coloma High School..... led team to three Lakeland Conference championships, two district titles and one regional banner.....three-time all-conference and all-region recognition.....named team MVP as a senior.....holds state of Michigan record for most assists in a single season with 1,548 set during her sophomore campaign.....finished high school career with 4,010 assists.....team posted a 181-34-4 record during the last four seasons.....four-time all-conference academic honoree.....member of Midwest Juniors 18 club team that earned a regional title in spring 2008.....senior class vice president.....National Honor Society student.

**Personal** - English education major at Cedarville University.....born 6/28/91 in Des Moines, IA.....daughter of Jarrod and Julie Bartholomew.....mother was a four-year volleyball player at Faith Baptist Bible College.....has two younger sisters.

# CU Career Leaders

through 10/25/11

| MATCHES PLAYED | 268 | Anne Lohrenz, 2003-06   |
|----------------|-----|-------------------------|
| 203            | 261 | Cheryl Miller, 1992-95  |
| 202            | 212 | Kelsey Jones, 2002-05   |
| 193            | 199 | Suzanne Lehman, 1995-98 |

| TOTAL BLOCKS | 722 | Sarah Zeltman, 2004-07        |
|--------------|-----|-------------------------------|
| 705          | 705 | Julia Bradley, 2003-06        |
| 586          | 586 | Heather van der Aa, 1998-2001 |
| 566          | 566 | Julie Opperman, 1995-98       |
| 516          | 516 | Kylee Husak, 2007-10          |
| 481          | 481 | Cheryl Miller, 1992-95        |
| 430          | 430 | Amy Martin, 1998-2001         |
| 387          | 387 | Amy Zehr, 1990-92             |
| 302          | 302 | Anne Lohrenz, 2003-06         |
| 262          | 262 | Kelsey Jones, 2002-05         |
| 262          | 262 | Melissa Holland, 2001-02      |

| SETS PLAYED | 695 | Julia Bradley, 2003-06      |
|-------------|-----|-----------------------------|
| 688         | 688 | Anne Lohrenz, 2003-06       |
| 663         | 663 | Sarah Zeltman, 2004-07      |
| 649         | 649 | Libby Short Aker, 2005-08   |
| 618         | 618 | Richelle Clem, 2001-04      |
| 616         | 616 | Maija Hampton, 2005-08      |
| 608         | 608 | Emily Berger Shade, 2006-09 |
| 604         | 604 | Julie Opperman, 1995-98     |
| 602         | 602 | Kelsey Jones, 2002-05       |
| 596         | 596 | Lauren Mable, 2002-05       |

| KILLS | 2,851 | Sarah Zeltman, 2004-07        |
|-------|-------|-------------------------------|
| 2,813 | 2,813 | Julia Bradley, 2003-06        |
| 2,390 | 2,390 | Heather van der Aa, 1998-2001 |
| 1,898 | 1,898 | Julie Opperman, 1995-98       |
| 1,515 | 1,515 | Julie Zehr, 1990-92           |
| 1,502 | 1,502 | Sarah Jackson, 1993-96        |
| 1,486 | 1,486 | Amy Martin, 1998-2000         |
| 1,478 | 1,478 | Cheryl Miller, 1992-95        |
| 1,475 | 1,475 | Kylee Husak, 2007-10          |
| 1,456 | 1,456 | Emily Shade, 2006-09          |

| ASSISTS      | 6,662        | Kelsey Jones, 2002-05             |
|--------------|--------------|-----------------------------------|
| 4,748        | 4,748        | Lori Bunger, 1997-2000            |
| 4,004        | 4,004        | Angela Hartman, 1990-93           |
| <b>3,253</b> | <b>3,253</b> | <b>Erica Bartholomew, 2009-11</b> |
| 2,990        | 2,990        | Carrie Hartman, 2000-03           |
| 2,367        | 2,367        | Rachel Thompson, 2004-06          |
| 2,285        | 2,285        | Julie Barkhaus McIntyre, 1996-98  |
| 1,854        | 1,854        | Sarah Sheers, 2006-08             |
| 1,504        | 1,504        | Michelle Nakano, 1987-89          |
| 1,444        | 1,444        | Katie Moon, 2007                  |

| BLOCK SOLOS | 339 | Sarah Zeltman, 2004-07        |
|-------------|-----|-------------------------------|
| 260         | 260 | Julia Bradley, 2003-06        |
| 220         | 220 | Cheryl Miller, 1992-95        |
| 216         | 216 | Kylee Husak, 2007-10          |
| 198         | 198 | Julie Opperman, 1995-98       |
| 196         | 196 | Heather van der Aa, 1998-2001 |
| 196         | 196 | Amy Zehr, 1990-92             |
| 126         | 126 | Amy Martin, 1998-2001         |
| 107         | 107 | Tammy Mascari, 1985-88        |
| 91          | 91  | Jeri Hastman, 1985-88         |

| BLOCK ASSISTS | 445 | Julia Bradley, 2003-06        |
|---------------|-----|-------------------------------|
| 390           | 390 | Heather van der Aa, 1998-2001 |
| 383           | 383 | Sarah Zeltman, 2004-07        |
| 368           | 368 | Julie Opperman, 1995-98       |
| 304           | 304 | Amy Martin, 1998-2001         |
| 300           | 300 | Kylee Husak, 2007-10          |

| DIGS  | 2,882 | Libby Short Aker, 2005-08 |
|-------|-------|---------------------------|
| 2,779 | 2,779 | Lauren Mable, 2002-05     |
| 2,429 | 2,429 | Melissa Hartman, 1992-95  |
| 2,144 | 2,144 | Maija Hampton, 2005-08    |
| 1,849 | 1,849 | Suzanne Lehman, 1995-98   |
| 1,844 | 1,844 | Kelsey Jones, 2002-05     |
| 1,807 | 1,807 | Richelle Clem, 2001-04    |
| 1,779 | 1,779 | Lori Bunger, 1997-2000    |
| 1,612 | 1,612 | Angela Hartman, 1990-93   |
| 1,586 | 1,586 | Dee Hauser, 1989-92       |

| SERVICE ACES | 216 | Sarah Zeltman, 2004-07    |
|--------------|-----|---------------------------|
| 215          | 215 | Lauren Mable, 2002-05     |
| 182          | 182 | Angela Hartman, 1990-93   |
| 169          | 169 | Richelle Clem, 2001-04    |
| 142          | 142 | Kelsey Jones, 2002-05     |
| 140          | 140 | Carrie Hartman, 2000-03   |
| 139          | 139 | Paula Thompson, 2001-03   |
| 138          | 138 | Libby Aker Short, 2005-08 |
| 132          | 132 | Amy Zehr, 1990-92         |
| 130          | 130 | Sarah Sheers, 2006-08     |

| SERVE PERCENTAGE | (500 serves; serves-errors)                   |
|------------------|---|
| .9872            | Suzanne Lehman (2112-27), 1995-98             |
| .9869            | Lori Bunger (2524-33), 1997-2000              |
| .9798            | Lisa Weirich Wood (1979-40), 1994-97          |
| .9710            | Katherine MacKenzie (1104-32), 2007-09        |
| .9692            | Courtney Williams (1917-59), 1999-2002        |
| .9674            | Pam Huls (983-32), 1998-99                    |
| <b>.9656</b>     | <b>Heather Kirkpatrick (1224-42), 2009-11</b> |
| .9635            | Sarah Jackson (1479-54), 1993-96              |
| .9631            | Cheryl Meyer (1979-73), 1998-2001             |
| .9622            | Sarah Zeltman (2623-99), 2004-07              |

| PASS PERCENTAGE | (500 attempts; attempts-errors)                |
|-----------------|--|
| .941            | Melissa Hartman (2544-151), 1992-95            |
| .940            | Suzanne Lehman (3002-181), 1995-98             |
| .940            | Becky Wilson (806-48), 1984-85                 |
| <b>.939</b>     | <b>Heather Kirkpatrick (2866-176), 2009-11</b> |
| .939            | Marcie Duez Curry (2016-123), 1993-96          |
| .934            | Libby Short Aker (4587-305), 2005-08           |
| .933            | Maija Hampton (2612-174), 2005-08              |
| .930            | Casey Hinzman (1979-138), 2007-09              |
| .928            | Pam Huls (804-58), 1998-99                     |
| .926            | Lisa Weirich Wood (1343-99), 1994-97           |



**Combs Interior  
Specialties Inc.**

[www.combsinterior.com](http://www.combsinterior.com)

471 Funderburg Road, Fairborn, Ohio 45324  
 Phone: 937-879-2047 • Fax: 937-879-0003 • Cell: 937-604-3134

Mark Combs - CEO/President - [mcombs@combsinterior.com](mailto:mcombs@combsinterior.com)

# 2011 Schedule/Results



& Saint Joseph's Tournament; Rensselaer, IN  
 + Alabama-Huntsville Tournament; Huntsville, AL  
 % Davis & Elkins Tournament; Elkins, WV  
 @ GLIAC/GLVC Crossover Tournament; Aurora, IL

|                 |  |                   |              |
|-----------------|--|-------------------|--------------|
| Sept. 2         | vs. Indiana PA&                        | Rensselaer, IN    | W 3-1        |
| Sept. 2         | vs. McKendree&                         | Rensselaer, IN    | L 3-2        |
| Sept. 3         | vs. Michigan Tech&                     | Rensselaer, IN    | W 3-2        |
| Sept. 3         | at Saint Joseph's&                     | Rensselaer, IN    | L 3-1        |
| Sept. 6         | at Shawnee State                       | Portsmouth, OH    | W 3-2        |
| Sept. 9         | vs. Henderson State+                   | Huntsville, AL    | L 3-2        |
| Sept. 9         | vs. Arkansas State+                    | Huntsville, AL    | L 3-1        |
| Sept. 10        | vs. Harding+                           | Huntsville, AL    | L 3-0        |
| Sept. 10        | vs. West Georgia+                      | Huntsville, AL    | L 3-1        |
| <b>SEPT. 13</b> | <b>CENTRAL STATE</b>                   | <b>CEDARVILLE</b> | <b>W 3-0</b> |
| Sept. 16        | vs. West Virginia Tech%                | Elkins, WV        | W 3-0        |
| Sept. 16        | at Davis & Elkins%                     | Elkins, WV        | W 3-1        |
| Sept. 17        | vs. Ohio Valley%                       | Elkins, WV        | W 3-0        |
| Sept. 17        | vs. Glenville State                    | Elkins, WV        | W 3-0        |
| Sept. 20        | at Malone                              | Canton, OH        | W 3-0        |
| <b>SEPT. 22</b> | <b>URSULINE*</b>                       | <b>CEDARVILLE</b> | <b>W 3-0</b> |
| <b>SEPT. 27</b> | <b>WALSH*</b>                          | <b>CEDARVILLE</b> | <b>L 3-1</b> |
| <b>SEPT. 28</b> | <b>NORTHERN KENTUCKY*</b>              | <b>CEDARVILLE</b> | <b>L 3-0</b> |
| <b>OCT. 1</b>   | <b>DAVIS &amp; ELKINS</b> (Homecoming) | <b>CEDARVILLE</b> | <b>W 3-0</b> |
| <b>OCT. 1</b>   | <b>URBANA</b> (Homecoming)             | <b>CEDARVILLE</b> | <b>W 3-0</b> |
| Oct. 4          | at Notre Dame OH                       | South Euclid, OH  | W 3-0        |
| Oct. 8          | vs. West Virginia Wesleyan             | Wheeling, WV      | L 3-1        |
| Oct. 8          | at Wheeling Jesuit                     | Wheeling, WV      | L 3-0        |
| Oct. 11         | at Central State                       | Wilberforce, OH   | W 3-0        |
| Oct. 14         | vs. Rockhurst@                         | Aurora, IL        | L 3-1        |
| Oct. 15         | vs. Kentucky Wesleyan@                 | Aurora, IL        | W 3-0        |
| Oct. 15         | vs. Saint Joseph's@                    | Aurora, IL        | L 3-1        |
| <b>OCT. 18</b>  | <b>MALONE*</b>                         | <b>CEDARVILLE</b> | <b>L 3-0</b> |
| <b>OCT. 21</b>  | <b>NOTRE DAME OH</b>                   | <b>CEDARVILLE</b> | <b>W 3-0</b> |
| Oct. 25         | at Walsh                               | N. Canton, OH     | L 3-1        |
| <b>OCT. 28</b>  | <b>ALDERSON-BROADDUS</b>               | <b>CEDARVILLE</b> | <b>6 pm</b>  |
| Oct. 29         | at Urbana                              | Urbana, OH        | 6 pm         |
| <b>NOV. 1</b>   | <b>INDIANA-EAST*</b>                   | <b>CEDARVILLE</b> | <b>7 pm</b>  |
| Nov. 3          | at Mount Vernon Nazarene               | Mount Vernon, OH  | 7 pm         |
| Nov. 8          | at Ursuline                            | Pepper Pike, OH   | 7 pm         |

All Starting Times Local  
 Home matches in **BOLD ALL CAPS**  
 \* Live Video Streaming via GameCentral



**Christian Camp & Retreat Center**

**740-778-CAMP • www.scioto.com**

**WINNER'S**  
*Village Market*

**766-1201**

**We have your LUNCH & SNACK favorites.**

**SCREEN PRINTING**

**OFFSET PRINTING**

**DESIGN SERVICES**

**ADVERTISING SPECIALTIES**

**EMBROIDERY**

**PLAQUES**

**WALNUTS**

**SCREEN PLAY**

1450 S. Patton Street  
 Xenia, Ohio 45386  
 Fax: 374-0111

**374-2646**

# Tonight's Match

The Cedarville University women's volleyball team hosts the Alderson-Broadus College Battlers tonight in the Callan Athletic Center.

The Lady Jackets are 16-14 on the season including a 3-1 set-back at Walsh University on Tuesday night. CU is 5-3 on the home court this season.

Alderson-Broadus, an NCAA II member of the West Virginia Intercollegiate Athletic Conference, is also 16-14 on the season including a 3-0 league win at Davis & Elkins on Wednesday. The Battlers have won seven consecutive matches.

The CU attack is led by sophomore Stephanie Rogers and rookies Amanda Bell and Hannah Wagner. Rogers, a 5-11 middle hitter, paces the Lady Jackets with 310 kills, 117 total blocks and a continually improving .335 attack percentage.



Stephanie Rogers

Bell, a 5-10 outside hitter, is second on the team with 272 kills and third in digs with 209.

Wagner, a 6-2 outside hitter, is third with 67 kills while adding a second-best .304 attack percentage.

Setters Erica Bartholomew and rookie Maddie Anderson direct CU's 6-2 offensive system. Anderson, a 5-9 left-hander, leads the squad with 610 assists and 68 service aces. Bartholomew, a 5-5 junior, has handed out 433 assists and ranks fourth all-time at CU with 3,253.

Alderson-Broadus is paced by WVIAC Player of the Week Victoria Morgan. The 6-2 freshman middle hitter has 148 kills with a team-leading 80 blocks and a .314 attack percentage.



Victoria Morgan

Sophomore outside hitter Ashley MacDonald is averaging a team-high 2.27 kills per set with 213 on the season. Jillian Brown, a sophomore defensive specialist, paces the Battlers with 450 digs in 2011.

Kayla Peterson, a freshman setter, runs the A-B offensive attack and is credited with 591 assists this season.

The Lady Jackets have won the previous two meetings with Alderson-Broadus.



## Comfort Suites



121 Raydo Circle  
 Springfield, OH  
 45506

**937-322-0707**

- All Suite Rooms
- Hot Deluxe Breakfast

Only 12 miles from CU!

*Proud to support the Yellow Jackets!!*

| <i>Stat Comparison</i> |  |  |
|------------------------|---|---|
| Current Record         | 16-14   | 16-14   |
| Sets Played            | 108   | 103   |
| Kills                  | 1281 *  | 1127  |
| Errors                 | 604   | 543 *   |
| Total Attacks          | 3439 *  | 3393  |
| Attack Pct.            | .197 *  | .172  |
| Kills/Set              | 11.8 *  | 10.9  |
| Assists                | 1158 *  | 999   |
| Assists/Set            | 10.7 *  | 9.7   |
| Service Aces           | 210 *   | 197   |
| Serving Errors         | 269 *   | 288   |
| Serving Attempts       | 2376 *  | NA  |
| Serve Pct.             | .887 *  | NA  |
| Aces/Set               | 1.9 *   | 1.9 *   |
| Serve Receive Errors   | 141 *   | 178   |
| Attempts               | 1966 *  | NA  |
| Reception Pct.         | .928 *  | NA  |
| Digs                   | 1256  | 1385 *  |
| Digs/Set               | 11.6  | 13.5 *  |
| Block Solo             | 50  | 53 *  |
| Block Assists          | 300 *   | 296   |
| Total Blocks           | 200   | 201 *   |
| Blocks/Set             | 1.9 *   | 1.9 *   |
| Block Errors           | 29 *  | 65  |
| Ball Handling Errors   | 33 *  | 46  |

# Cedarville University "Lady Jackets" (16-14)

Cedarville, Ohio

Head Coach: Doug Walters



| No | Player              | Pos   | Ht   | Yr | Hometown          | High School           |
|----|---------------------|-------|------|----|-------------------|-----------------------|
| 1  | Erica Bartholomew   | S     | 5-5  | Jr | Coloma, MI        | Coloma                |
| 2  | Heather Kirkpatrick | L/DS  | 5-7  | Jr | Huntsville, AL    | Grissom               |
| 3  | Hannah Wagner       | OH    | 6-2  | Fr | Claremont, CA     | Upland Christian      |
| 4  | Emilie Morrison     | DS/OH | 5-9  | Sr | Mount Vernon, IA  | Mount Vernon          |
| 5  | Amanda Bell         | OH    | 5-10 | Fr | Ankeny, IA        | Grandview Park Bapt.  |
| 6  | Kelsey Christiansen | M/OH  | 6-0  | So | Fishers, IN       | Heritage Christian    |
| 7  | Maddie Anderson     | S     | 5-9  | Fr | Carmel, IN        | Heritage Christian    |
| 8  | Aubrey Siemon       | OH    | 6-1  | Sr | Springfield, OH   | Northwestern          |
| 9  | Stephanie Rogers    | MH    | 5-11 | So | Carmel, IN        | Heritage Christian    |
| 11 | Kassi Ernsberger    | DS/OH | 5-9  | So | Mansfield, OH     | Lexington             |
| 12 | Lauren Williams     | DS    | 5-6  | So | Cleveland, OH     | Trinity               |
| 13 | Sarah Bradshaw      | DS    | 5-5  | So | Ballston Lake, NY | Loudonville Christian |
| 14 | Kara Yutzy          | DS    | 5-8  | Jr | W. Jefferson, OH  | Shekinah Christian    |

## AVCA NCAA II National Rankings

Oct. 24, 2011

| Rank | School (First Place)         | Points | 2011 Record | Previous |
|------|------------------------------|--------|-------------|----------|
| 1    | Tampa (20)                   | 777    | 23-0        | 2        |
| 2    | Minnesota Duluth (9)         | 767    | 23-0        | 4        |
| 3    | Cal State San Bernardino (1) | 728    | 20-0        | 3        |
| 4    | Concordia-St. Paul (2)       | 709    | 22-1        | 1        |
| 5    | Washburn                     | 670    | 22-1        | 5        |
| 6    | Nebraska-Kearney             | 629    | 23-1        | 6        |
| 7    | Hillsdale                    | 590    | 21-2        | 8        |
| 8    | Central Missouri             | 572    | 19-4        | 7        |
| 9    | Southwest Minnesota State    | 531    | 17-6        | 9        |
| 10   | Metro State                  | 507    | 19-4        | 11       |
| 11   | Ferris State                 | 442    | 19-2        | 13       |
| 12   | West Texas A&M               | 413    | 25-2        | 14       |
| 13   | Wayne State (Neb.)           | 400    | 17-6        | 10       |
| 14   | Northern Kentucky            | 365    | 20-3        | 12       |
| 15   | Wingate                      | 340    | 23-0        | 15       |
| 16   | Armstrong Atlantic State     | 328    | 28-0        | 16       |
| 17   | Angelo State                 | 295    | 25-2        | 17       |
| 18   | UC San Diego                 | 255    | 15-4        | 18       |
| 19   | Minnesota State              | 233    | 15-7        | 19       |
| 20   | Lewis                        | 221    | 18-5        | 20       |
| 21   | Colorado School of Mines     | 157    | 17-6        | 22       |
| 22   | Sonoma State                 | 133    | 18-3        | 24       |
| 23   | Indianapolis                 | 89     | 15-6        | 21       |
| 24   | Seattle Pacific              | 65     | 16-5        | 23       |
| 25   | Regis                        | 50     | 19-6        | 25       |

Others receiving votes: Eckerd 38; Western Washington 19; Truman 12; Emporia State 11; Rollins 11; Arkansas Tech 8; Wheeling Jesuit 8; West Florida 7; Missouri S&T 4; Chico State 2.

Dropped out: None.

## Cedarville Quick Facts

Founded .....1887  
 President .....Dr. Bill Brown  
 Enrollment .....3,300  
 Affiliation .....NCAA II (provisional), NCCAA I  
 Nickname .....Yellow Jackets  
 School Colors .....Blue and Yellow  
 Conference .....Independent  
 Athletic Director .....Dr. Alan Geist  
 Sports Information Director .....Mark Womack  
 Web Site .....www.cedarville.edu  
 2010 Record .....(18-20, 6-4 AMC)



101 E. Alex Bell Rd.,  
 Ste. 178  
 Centerville, OH  
 937.428.5800

www.dovesnestgifts.com

Hours: M-W-F 10-6 • Tu-Th 10-8 •  
 • Sat 10-5 •

"Dress your house in style!"



"Official Charter  
 Company of the  
 Cedarville  
 Yellow Jackets"

937-879-3000

8250 Expansion Way  
 Dayton, OH 45424

# Alderson-Broaddus College "Battlers" (16-14)

Philippi, WV

Head Coach: Carrie Bodkins



| No | Player            | Pos   | Ht   | Yr | Hometown               | High School/Prev.       |
|----|-------------------|-------|------|----|------------------------|-------------------------|
| 1  | Andra Brown       | DS/S  | 5-4  | So | Avon, OH               | Hearts for Jesus Christ |
| 2  | April Lammert     | MH/OH | 5-10 | Sr | Sussex, WI             | Arrowhead               |
| 3  | Tori Shawyer      | DS    | 5-6  | Jr | Inwood, WV             | Musselman               |
| 4  | Jillian Brown     | L/DS  | 5-5  | So | Reynoldsburg, OH       | Bishop Hartley          |
| 5  | Kayla Peterson    | S     | 5-10 | Fr | West Liberty, OH       | West Liberty Salem      |
| 7  | Erin Armstrong    | OH    | 5-8  | Sr | Parkersburg, WV        | Parkersburg             |
| 8  | Taylor Dutcher    | DS    | 5-6  | Fr | Green Cove Springs, FL | Clay                    |
| 9  | Annie Hodge       | DS/S  | 5-6  | Jr | Spencer, WV            | Roane County            |
| 10 | Ashley MacDonald  | OH    | 5-9  | So | Canonsburg, PA         | Canon-McMillan          |
| 11 | Katie Bedel       | MH/OH | 5-11 | Jr | Cincinnati, OH         | Seton                   |
| 12 | Cassandra Marsh   | OH    | 5-10 | Sr | Daleville, IN          | Shenandoah              |
| 13 | Melissa Kahlig    | OH/MH | 5-11 | Jr | Coldwater, OH          | Coldwater               |
| 14 | Aerial Munson     | DS/S  | 5-6  | So | Hedgesville, WV        | Hedgesville             |
| 15 | Erica Bickham     | OH    | 5-10 | Fr | Pickerington, OH       | Pickerington North      |
| 16 | Samantha Bailey   | MH    | 6-1  | Fr | West Union, WV         | Doddridge County        |
| 17 | Tarran Thacker    | MH    | 6-0  | Fr | Marengo, OH            | Highland                |
| 18 | Katherine Simmons | MH/OH | 6-1  | So | Highlands Ranch, CO    | Mountain Vista          |
| 19 | Clarissa Janz     | OH    | 5-10 | Fr | West Bent, WI          | Slinger                 |
| 20 | Taylor Martin     | MH    | 6-1  | Sr | Richmond, VA           | Douglas Freeman         |
| 24 | Victoria Morgan   | MH    | 6-2  | Fr | Ontario, Canada        | Holy Names              |

US DOT No. 077949 PUCO No. 1455HG

**Agent for United**

**OHIO MOVING**  
SAME OR NEXT DAY DELIVERY  
"Moving for three generations"



**BBB ACCREDITED BUSINESS**

**NATIONAL AND WORLD WIDE PRE-PLANNED MOVING**

RESIDENTIAL • COMMERCIAL • OFFICE • EXPERT PACKING & CRATING

**ROLLINS for Moving**  
LOCAL-NATIONAL-WORLD WIDE WITH THE SAME QUALITY SERVICE  
PROFESSIONAL PACKING AND CRATING

**ROLLINS for Storage**  
FULLY INSURED CONTAINERIZED STORAGE

**ROLLINS for Care**  
FULL VALUE PROTECTION

1900 E. LEFFEL LANE SPRINGFIELD, OHIO 45505

**ROLLINS MOVING & STORAGE INC.**  
**325-2484**  
www.rollinsmoving.com

## Alderson-Broaddus Quick Facts

|                             |  |
|-----------------------------|--|
| Founded                     | 1932                                   |
| President                   | Rick Creehan                           |
| Enrollment                  | 783                                    |
| Affiliation                 | NCAA II                                |
| Nickname                    | Battlers                               |
| School Colors               | Blue and Gold                          |
| Conference                  | West Virginia Intercollegiate Athletic |
| Athletic Director           | Dennis Creehan                         |
| Sports Information Director | Patrick McGinnis                       |
| Web Site                    | www.ab.edu                             |
| 2010 Record                 | 23-14 (11-3 WVAC)                      |

**Trophy Sports Center**

- Team Sales
- Awards
- Uniforms
- School Jackets
- Screen Printing



**376-2311**


**Colonial Pizza and Deli**

98 North Main  
Cedarville, Ohio 45314

**766-5779**

"Serving Its Hometown for Over a Decade"

**HOURS:**  
— Sunday —  
5:00 pm to 11:00 pm  
— Monday thru Thursday —  
11:00 am to 11:00 pm  
— Friday & Saturday —  
11:00 am to 12:00 pm



# CU All-Time Volleyball Roster

## (through 2011) --- A ---

Margee Agley  
Libby Short Aker  
**Maddie Anderson** 2011  
Rachel Anderson 2002-04  
Becca Argento 2002  
Dinah Arthur 1973

## --- B ---

Nancy Bailey 1966  
Becky Baker 1966  
**Erica Bartholomew** 2009-11  
Linda Bean 1989-90  
Bonnie Beikert 1979-82  
**Amanda Bell** 2011  
Andrea Berry 1986  
Kathy Berry 1970  
Pat Betts 1968-69  
Penny Bodemiller 1982  
Grace Bonnema 1964  
Leona Bowen 1970  
Pat Boyd 1967  
Julia Bradley 2003-06  
Melinda Bradley 1983-85  
**Sarah Bradshaw** 2011  
Pam Branning 1963, 70  
Elaine Brown 1974-76  
Laurie Bruenino 1976  
Lori Bunger 1997-2000  
Tracie Burlingame 1989-90  
Shawn Bush 1990  
Julie Butler 1983-86  
Joyce Byers 1971

## --- C ---

Terri Cadman 1975  
Becky Cagwin 1967  
Sue Ellen Cale 1972  
Bev Carlson 1964-67  
Cindi Carter 1975  
Nancy Chnecker 1971  
Justine Christiaanse 2006-09  
**Kelsey Christiansen** 2010-11  
Charlene Clark 1975  
Laureen Clark 1972-75  
Richelle Clem 2011-04  
Connie Clemons 1977-78  
Beth Comer 1995-97  
Tammy Compton 1981  
Lorrie Cooper 1966  
Teresa Cooper 1971-72  
Judie Cross 1974-72  
Roni Crum 1974-76  
Louanne Cruz 1986  
Lynette Cruz 1989, 91-92  
Kristi Culp 1984-86  
Jane Cunningham 1969  
Marcie Duez Curry 1993-96

## --- D ---

Ann Damon 1963-66  
Debbie Davis 1971  
Becky DeLancey 1975-76  
Denise DeMars 1973-76  
Karen DeMars 1969-72  
Kristine Deshetsy 1991  
Denise DeWalt 1989  
Michelle Dick 1993  
Jennifer Dilling 1990-91  
Jennifer Dinelli 1991  
Amy Dirr 1990-91  
Donna Douglas 1984  
Jan DuBois 1965-66

## --- E ---

Karen Eccleston 1997  
Michaelle Egel 1986-87  
**Kassi Ernsberger** 2010-11  
April Eutsey 1987

## --- F ---

Debbie Fakan 1979-80  
Susan Field 1980  
Sandy Finch 1971-74  
RaeBelle Fisher 1969  
Sandy Fletcher 1988-89  
Kari Flunker 2005  
Lori Franklin 1979  
Chrissie Fretts 1998-2000

## --- G ---

Amy Garner 2006-07  
Renee Gaston 1982-84  
Mia Gerard 1993  
Sue Geysler 1963  
Lauren Gill 2009-10  
Kathy Godinez 2002-03  
Beth Goldsmith 1982-84  
Debbie Good 1974-75  
Pam Goodwin 1993-95  
Mary Lynn Grable 1966-68  
Wendy Grady 1983  
Ruth Grant 1964  
Mary Greening 1979-80  
Cari Greetham 2005, 08  
Jill Griswold 1977-79

## --- H ---

Lori Hamilton 1988-89, 91  
Maija Hampton 2005-08  
Kathi Haney 1981-82  
Carol Hanson 1965-66  
Sue Harger 1964  
Marcy Morton Harper 1979-81  
Shelly Harris 1983  
Angela Hartman 1990-93  
Carrie Hartman 2000-03  
Melissa Hartman 1992-95  
Sarah Hartman 2007-10  
Lana Hass 1992-94  
Cindy Hasselbring 1994  
Jeri Hastman 1985-88  
Dee Hauser 1989-92  
Cindy Heinrich 1977  
Carol Helmick 1981-84  
Debbie Henry 1989-92  
Cheryl Heslep 1971-74  
Andrea Hilliker 2001  
Casey Hinzman 2007-09  
Jennifer Hoag 1968  
Brenda Hobar 1976-79  
Karen Hobar 1980-83  
Krista Hoffman 1995  
Melissa Holland 2001-02  
Pat Holmes 1975-77  
Donna Hopkins 1965, 67-68  
Wilma Hopkins 1982-89  
Laura Huggler 1992-95  
Pam Huls 1998-99  
Shellee Hunt 1975  
Kylee Husak 2007-10  
Julie Hutchins 1977  
Salli Hyde 1980-81

## --- I ---

Michelle Ince 2003  
Patty Irwin 1969-70

## --- J ---

Sarah Jackson 1993-96  
Jill Jacobs 1987-88  
Keri Jacobs 1992  
Maryalyce Jeremiah 1963-64  
Amanda Johns 1996-97  
Sue Johns 1963-64  
Joyce Johnson 1964-65  
Kathy Johnson 1964  
Kelsey Jones 2002-05

## --- K ---

Donna Kahler 1968, 70  
Elaine Kalnbach 1970-72  
Janice Kane 1963  
Pat Kaster 1963  
Barbara Kensil 1965, 67-68  
**Heather Kirkpatrick** 2009-11  
Jennifer Knecht 1978-79  
Eileen Knott 1966-67  
Shelley Knowles 1974

## --- L ---

Nancy Leapline 1967  
Suzanne Lehman 1995-98  
Michelle Leleh 1985  
Val Linderman 1981-82  
Anne Lohrenz 2003-06

## --- M ---

Lauren Mable 2002-05  
Katherine MacKenzie 2007-09  
Amy Martin 1998-2001  
Jan Martin 1970-72  
Tammy Mascari 1985-88  
Tina Mascari 1993  
April May 1974  
Rachel Mayo 1974  
Janet McClish 1963  
Rita McDowell 1969  
Julie Barkhaus McIntyre 1996-98  
Karen Meadows 1983-84  
Susan Meier 1981  
Julie Mercer 1995  
Helen Meshew 1963  
Cheryl Meyer 1998-2001  
Lori Miesse 1985  
Aimee Miller 1991-92  
Cheryl Miller 1992-95  
Elizabeth Miller 1991-93  
Katie Moon 2007  
**Emilie Lynch Morrison** 2008-11  
Darcy Morton 1978-81  
Michelle Moser 1977  
Kim Murray 1975

## --- N ---

Michelle Nakano 1987-89  
Rachel Norton 1975-78

## --- O ---

Judy O'Connor 1985  
Sarah Oleszczuk 1999-2001  
Julie Opperman 1995-98  
Sally Orihood 1971-74  
Linda Osborn 1971-73  
Nancy Ozinga 1984-85

## --- P ---

Sue Palmer 1979  
Micky Park 1975-76  
Melissa Parmerlee 2005-06  
Flo Parshley 1967  
Erica Paugh 2002-05  
Landa Penquite 1976-78  
Bev Pestel 1969-71  
Lachelle Peters 1999-2000  
Marsha Peterson 1981-82  
Teri Cater Peterson 1982-84  
Lisa Petty 1980  
Aaryn Phillips 2002-03  
Robyn Pittman 1998  
Meredith Pollard 1993-94  
Terri Potter 1978  
JoEllyn Priola 1975-76

## --- Q ---

Peggy Quigley 1980-83

## --- R ---

Robin Raabe 1977  
Suzie Rader 1965-67  
Karen Rau 1966-67  
Alison Reemtsma 1998-99  
Betsy Reich 1991  
Julie Rhoads 2000-01  
Karla Richardson 1989  
Susie Riegler 1977-80  
Laura Roby 1973  
Lori Rogers 1986-88  
Ruth Rogers 1965  
**Stephanie Rogers** 2010-11  
Becky Ross 1963  
Carol Rotsko 1973  
Lori Royal 1991-94  
Casey Ruffin 1996  
Colleen Ryan 1966

## --- S ---

Paula Sadler 1964, 66  
Dorene Sands 1975-77  
Christine Scheffel 1995-96  
Heather Scheffel 1994-97  
Sandy Holwerda Schlappi 1971-74  
Casey Schmidt 1999-2000  
Joan Schmidt 1979-80  
Kari Schmidt 1978  
Jewel Schroder 1981

Mary Ellen Schut 1965  
Kathy Scott 1972-73  
Pat Scovell 1963  
Kim Seefried 1977  
Rachel Sellers 1990  
Emily Berger Shade 2006-09  
Julianne Sharp 1991, 93  
Sarah Sheers 2006-08  
Elma Shugg 1965-66  
Nikki Siefert 2009-10  
**Aubrey Siemon** 2011  
Renee Silverthorn 1968  
Jennifer Sloan 1992  
Janae Smart 1985-88  
Becky Smith 1970  
Heather Smith 1998  
Nancy Smith 1963  
Nancy Snook 1976-78  
Kathy Spencer 1965-68  
Melissa Sprankle 1994-96  
Pam Squires 1987-88  
Judy Stamatits 1967-69  
Liz Sweeney 2006-09

## --- T ---

Shawn Taylor 1976-77  
Jennifer Tetrick 1999-2000  
Kelly Theiss 2005-06  
Billie Thomas 1968-70  
Jody Thompson 1996  
Paula Thompson 2001-03  
Rachel Thompson 2004-06  
Rachel Tilton 1996-97  
Brenda Tompkins 1969-72  
Christine Tompkins 1971  
Connie Tompkins 1968  
Gail Tompkins 1964-67  
Valerie Totman 1974-77  
Joy Trefzger 1969-70  
Kathy Turner 1976-79

## --- U ---

Jenny Ulmer 1982

## --- V ---

Heather van der Aa 1998-2001  
Kristi VanDyke 1990  
Pat Versluis 1964

## --- W ---

**Hannah Wagner** 2011  
Lisa Wagner 1980  
Peg Wagner 1973  
Lois Walker 1965-66  
Connie Ward 1964  
Lynda Wessel 1968  
Shara Westcott 1963-64  
Laura Whaley 1987  
Val Whisler 1981  
Linda White 1970-72  
Angie Wilcox 1983-86  
Courtney Williams 1999-2002  
**Lauren Williams** 2010-11  
Pam Williams 1972  
Becky Wilson 1984-85  
Julie Wilson 1986-89  
Linda Wilson 1965  
Charissa Winburg 2001-02  
Twila Wing 1965  
Dee Wiseman 1981-82  
Pat Wissinger 1966-69  
Lynn Witt 1986  
Susan Wittenbach 1980  
Miranda Woller 1996-97  
Lisa Weirich Wood 1994-97  
Tiffany Wyant 2004-05

## --- Y ---

Stephanie Yankovich 1992  
Sherry Yates 1982  
Emily Young 1999-2000  
**Kara Yutzey** 2009-11

## --- Z ---

Amy Zehr 1990-92  
Sarah Zeltman 2004-07  
Leah Ziegenfuss 1997-2000  
Connie Ziegler 1987-88

**RAMADA**  
Proud sponsors of the Yellow Jackets!

"Please ask about our Cedarville University rate"  
300 Xenia Town Square  
Xenia, Ohio 43585  
**(937) 372-9921**

FOR THE TRUTH - FOR THE CHURCH - FOR THE WORLD

**"PREACH the Word."** HOLY BIBLE


The Southern Baptist Theological Seminary  
Louisville, Kentucky www.sbt.edu

FOR THE GLORY OF GOD

**Colonial Pizza and Deli**  
98 N. Main St., Cedarville, Ohio  
**766-5779**

"Serving Its Hometown for Over a Decade"  
Owned by Ronnie and Sandy Acton

HOURS:  
- Sunday -  
5:00 pm to 11:00 pm  
- Monday thru Thursday -  
11:00 am to 11:00 pm  
- Friday & Saturday -  
11:00 am to 12:00 pm



**Hidy** Family of Cars  
Beavercreek, Ohio  
**937-426-9564**

- Honda
- Hyundai
- Ford
- Acura

# 2011 Cedarville University Volleyball Statistics

## 2011 Women's Volleyball Cedarville Overall Individual Statistics (as of Oct 27, 2011) All matches

Overall record: 16-14 Conf: 0-0 Home: 5-3 Away: 5-3 Neutral: 6-8

| ## | Player              | sp  | mp-ms | Attack |      |     |      |       | Set  |      |      |      | Serve |      |     |      |      |
|----|---------------------|-----|-------|--------|------|-----|------|-------|------|------|------|------|-------|------|-----|------|------|
|    |                     |     |       | k      | k/s  | e   | ta   | pct   | a    | a/s  | ta   | pct  | sa    | sa/s | se  | ta   | pct  |
| 9  | Stephanie Rogers    | 108 | 30-   | 310    | 2.87 | 85  | 671  | .335  | 13   | 0.12 | 52   | .250 | 19    | 0.18 | 48  | 266  | .820 |
| 5  | Amanda Bell         | 104 | 29-   | 272    | 2.62 | 174 | 755  | .130  | 14   | 0.13 | 122  | .115 | 19    | 0.18 | 47  | 294  | .840 |
| 3  | Hannah Wagner       | 108 | 30-   | 267    | 2.47 | 84  | 601  | .304  | 17   | 0.16 | 82   | .207 | 0     | 0.00 | 0   | 0    | .000 |
| 6  | Kelsey Christiansen | 95  | 29-   | 133    | 1.40 | 66  | 374  | .179  | 22   | 0.23 | 80   | .275 | 0     | 0.00 | 0   | 1    | 1.00 |
| 12 | Lauren Williams     | 105 | 30-   | 138    | 1.31 | 99  | 483  | .081  | 8    | 0.08 | 101  | .079 | 33    | 0.31 | 46  | 451  | .898 |
| 4  | Emilie Morrison     | 45  | 26-   | 31     | 0.69 | 16  | 99   | .152  | 9    | 0.20 | 32   | .281 | 0     | 0.00 | 0   | 1    | 1.00 |
| 8  | Aubrey Siemon       | 108 | 30-   | 74     | 0.69 | 40  | 216  | .157  | 3    | 0.03 | 15   | .200 | 3     | 0.03 | 12  | 59   | .797 |
| 7  | Maddie Anderson     | 108 | 30-   | 31     | 0.29 | 11  | 94   | .213  | 610  | 5.65 | 1499 | .407 | 68    | 0.63 | 43  | 500  | .914 |
| 14 | Kara Yutzy          | 78  | 29-   | 12     | 0.15 | 13  | 77   | -.013 | 9    | 0.12 | 74   | .122 | 25    | 0.32 | 22  | 216  | .898 |
| 1  | Erica Bartholomew   | 108 | 30-   | 13     | 0.12 | 10  | 47   | .064  | 433  | 4.01 | 1075 | .403 | 18    | 0.17 | 36  | 355  | .899 |
| 13 | Sarah Bradshaw      | 7   | 5-    | 0      | 0.00 | 0   | 0    | .000  | 0    | 0.00 | 1    | .000 | 0     | 0.00 | 0   | 2    | 1.00 |
| 2  | Heather Kirkpatrick | 84  | 29-   | 0      | 0.00 | 6   | 22   | -.273 | 20   | 0.24 | 154  | .130 | 25    | 0.30 | 15  | 231  | .935 |
|    | CEDARVILLE          | 108 | 30-   | 1281   | 11.8 | 604 | 3439 | .197  | 1158 | 10.7 | 3287 | .352 | 210   | 1.94 | 269 | 2376 | .887 |
|    | Opponents           | 108 | 30-   | 1027   | 9.51 | 492 | 3065 | .175  | 934  | 8.65 | 1747 | .535 | 141   | 1.31 | 208 | 1327 | .843 |

| ## | Player              | sp  | Receipt |      |       | Dig  |       | Blocking |     |       |       |    |     |
|----|---------------------|-----|---------|------|-------|------|-------|----------|-----|-------|-------|----|-----|
|    |                     |     | re      | ta   | pct   | dig  | dig/s | bs       | ba  | total | blk/s | be | bhe |
| 9  | Stephanie Rogers    | 108 | 0       | 11   | 1.000 | 53   | 0.49  | 28       | 89  | 117   | 1.08  | 6  | 3   |
| 5  | Amanda Bell         | 104 | 39      | 492  | .921  | 209  | 2.01  | 4        | 31  | 35    | 0.34  | 2  | 3   |
| 3  | Hannah Wagner       | 108 | 0       | 6    | 1.000 | 30   | 0.28  | 6        | 44  | 50    | 0.46  | 3  | 2   |
| 6  | Kelsey Christiansen | 95  | 0       | 0    | .000  | 20   | 0.21  | 2        | 40  | 42    | 0.44  | 5  | 0   |
| 12 | Lauren Williams     | 105 | 31      | 517  | .940  | 223  | 2.12  | 1        | 22  | 23    | 0.22  | 3  | 2   |
| 4  | Emilie Morrison     | 45  | 0       | 15   | 1.000 | 14   | 0.31  | 0        | 8   | 8     | 0.18  | 1  | 2   |
| 8  | Aubrey Siemon       | 108 | 0       | 3    | 1.000 | 10   | 0.09  | 9        | 59  | 68    | 0.63  | 7  | 1   |
| 7  | Maddie Anderson     | 108 | 0       | 1    | 1.000 | 156  | 1.44  | 0        | 4   | 4     | 0.04  | 2  | 11  |
| 14 | Kara Yutzy          | 78  | 31      | 416  | .925  | 190  | 2.44  | 0        | 2   | 2     | 0.03  | 0  | 2   |
| 1  | Erica Bartholomew   | 108 | 2       | 2    | .000  | 85   | 0.79  | 0        | 0   | 0     | 0.00  | 0  | 6   |
| 2  | Heather Kirkpatrick | 84  | 31      | 483  | .936  | 259  | 3.08  | 0        | 0   | 0     | 0.00  | 0  | 1   |
| 13 | Sarah Bradshaw      | 7   | 0       | 3    | 1.000 | 7    | 1.00  | 0        | 1   | 1     | 0.14  | 0  | 0   |
| -  | TEAM                | -   | 7       | -    | -     | -    | -     | -        | -   | -     | -     | -  | -   |
|    | CEDARVILLE.....     | 108 | 141     | 1966 | .928  | 1256 | 11.63 | 50       | 300 | 200.0 | 1.85  | 29 | 33  |
|    | Opponents.....      | 108 | 210     | 1141 | .816  | 1227 | 11.36 | 62       | 265 | 194.5 | 1.80  | 70 | 59  |



### Comfort Suites

121 Raydo Circle  
Springfield, OH  
45506

937-322-0707

- All Suite Rooms
- Hot Deluxe Breakfast

Only 12 miles from CU!

Proud to support the Yellow Jackets!!



creationmuseum.org

### Hightech Automotive

Appointments for sick cars and unhappy owners;

937.766.9852

105 West Xenia Ave., Cedarville, OH

### Trophy Sports Center

- Team Sales
- Awards
- Uniforms
- School Jackets
- Screen Printing



376-2311



(937)433-8268

Cotterman & Company Inc.

Industrial & Commercial Roofing  
www.CottermanRoofing.com  
Dayton & Minster, Ohio



# Meet the 2011 Lady Jackets



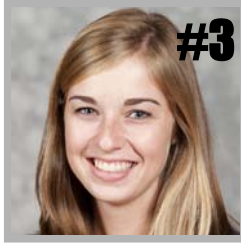
#1

**Erica Bartholomew**  
5'5" • Junior  
Setter  
Coloma, MI



#2

**Heather Kirkpatrick**  
5'7" • Junior  
Libero/Def. Specialist  
Huntsville, AL



#3

**Hannah Wagner**  
6'2" • Freshman  
Outside Hitter  
Claremont, CA



#4

**Emilie Morrison**  
5'9" • Senior  
Outside Hitter/DS  
Mount Vernon, IA



#5

**Amanda Bell**  
5'10" • Freshman  
Outside Hitter  
Ankeny, IA



#6

**Kelsey Christiansen**  
6'0" • Sophomore  
Middle Hitter/OH  
Fishers, IN



#7

**Maddie Anderson**  
5'9" • Freshman  
Setter  
Carmel, IN



#8

**Aubrey Siemon**  
6'1" • Senior  
Outside Hitter  
Springfield, OH



#9

**Stephanie Rogers**  
5'11" • Sophomore  
Middle Hitter  
Carmel, IN



#11

**Kassi Ernsberger**  
5'9" • Sophomore  
Outside Hitter  
Mansfield, OH



#12

**Lauren Williams**  
5'6" • Sophomore  
Defensive Specialist  
Cleveland, OH



#13

**Sarah Bradshaw**  
5'5" • Sophomore  
Defensive Specialist  
Albany, NY



#14

**Kara Zutzy**  
5'8" • Junior  
Defensive Specialist  
West Jefferson, OH

**Mom and Dad's  
Dairy Bar &  
Grille**

320 N. Main Street  
Cedarville, OH

(937)766-2046

Offering Game  
Night Specials

**Trent E. Lickliger, CPA**

- Income Tax Preparation
- Payroll Service
- Free Consultations
- Personal, Quality Attention
- Open Year-Round

**937-372-7500**

25 S. Detroit St., Xenia, OH

45385

cpa@lickligercpa.com

# All-Time Series Records

1003 Wins — 655 Losses — .605 Pct. — 49 Years (thru 10/25/11)

|                           | W  | L  |                               | W  | L  |
|---------------------------|----|----|-------------------------------|----|----|
| Akron                     | 0  | 0  | Maine-Machias                 | 2  | 0  |
| Albertson                 | 0  | 2  | <b>Malone</b>                 | 28 | 18 |
| <b>Alderson-Broadus</b>   | 2  | 0  | Manchester                    | 4  | 1  |
| Alliant International     | 1  | 0  | Marian                        | 2  | 1  |
| Alma                      | 1  | 0  | Marietta                      | 1  | 1  |
| Anderson                  | 9  | 4  | Marshall                      | 1  | 1  |
| Antioch                   | 1  | 2  | Maryville                     | 2  | 0  |
| Aquinas                   | 6  | 0  | Master's                      | 1  | 2  |
| <b>Arkansas Tech</b>      | 0  | 1  | <b>McKendree</b>              | 0  | 2  |
| Asbury                    | 3  | 0  | Miami OH                      | 3  | 5  |
| Ashland                   | 2  | 6  | Michigan-Dearborn             | 3  | 4  |
| Baldwin-Wallace           | 4  | 0  | <b>Michigan Tech</b>          | 1  | 0  |
| Barat                     | 1  | 0  | MidAmerica Nazarene           | 1  | 0  |
| Bellarmino                | 0  | 1  | Midway                        | 2  | 0  |
| Benedictine KS            | 1  | 0  | Milligan                      | 1  | 0  |
| Berea                     | 1  | 0  | Morehead State                | 0  | 2  |
| Berry                     | 1  | 0  | Morris Harvey                 | 1  | 0  |
| Bethany                   | 1  | 1  | Mount St. Joseph              | 2  | 34 |
| Bethel IN                 | 9  | 4  | Mount Union                   | 7  | 0  |
| Bluffton                  | 8  | 25 | <b>Mt. Vernon Nazarene</b>    | 24 | 40 |
| Bowling Green             | 0  | 6  | Mountain State                | 3  | 0  |
| Brescia                   | 1  | 0  | Muskingum                     | 7  | 6  |
| California Baptist        | 0  | 2  | <b>Northern Kentucky</b>      | 0  | 1  |
| Campbellsville            | 2  | 2  | Northwest WA                  | 1  | 0  |
| Capital                   | 9  | 12 | Northwestern IA               | 1  | 0  |
| Carlow                    | 5  | 0  | Northwestern MN               | 2  | 0  |
| Carthage                  | 0  | 1  | Northwestern Ohio             | 2  | 1  |
| Case Western Reserve      | 3  | 0  | Northwood FL                  | 1  | 0  |
| <b>Central State</b>      | 62 | 11 | <b>Notre Dame OH</b>          | 12 | 1  |
| Centre                    | 1  | 0  | Oakland City                  | 5  | 1  |
| Charleston                | 1  | 0  | Oberlin                       | 7  | 0  |
| Chicago State             | 0  | 1  | Ohio                          | 3  | 7  |
| Christian Heritage        | 1  | 4  | Ohio Dominican                | 48 | 19 |
| Cincinnati                | 1  | 13 | Ohio Northern                 | 7  | 10 |
| Cincinnati Christian      | 13 | 0  | Ohio State                    | 0  | 8  |
| Clearwater Christian      | 2  | 0  | <b>Ohio Valley</b>            | 3  | 0  |
| Cleveland State           | 1  | 2  | Ohio Wesleyan                 | 9  | 4  |
| Colorado Christian        | 1  | 0  | Olivet                        | 4  | 0  |
| Columbia MO               | 0  | 1  | Olivet Nazarene               | 4  | 4  |
| Concord                   | 2  | 0  | Otterbein                     | 15 | 5  |
| Concordia MI              | 8  | 0  | Palm Beach Atlantic           | 2  | 4  |
| Cornerstone               | 8  | 3  | Penn State-Behrend            | 1  | 0  |
| Cumberland TN             | 2  | 0  | Pensacola Christian           | 1  | 0  |
| Cumberlands KY            | 2  | 0  | Pikeville                     | 2  | 0  |
| Daemen                    | 4  | 2  | Pittsburgh-Bradford           | 1  | 0  |
| Dallas                    | 1  | 0  | Point Park                    | 7  | 1  |
| Dallas Baptist            | 1  | 0  | Quincy                        | 0  | 1  |
| Davenport                 | 3  | 0  | Rio Grande                    | 41 | 14 |
| <b>Davis &amp; Elkins</b> | 2  | 0  | Robert Morris IL              | 2  | 0  |
| Dayton                    | 3  | 25 | Roberts Wesleyan              | 6  | 0  |
| Defiance                  | 24 | 13 | <b>Rockhurst</b>              | 0  | 1  |
| Denison                   | 11 | 3  | Saint Francis IL              | 0  | 2  |
| DePauw                    | 3  | 0  | Saint Francis IN              | 10 | 4  |
| Doane                     | 0  | 1  | <b>Saint Joseph's IN</b>      | 1  | 5  |
| Earlham                   | 13 | 2  | Saint Mary NE                 | 0  | 2  |
| Eastern Illinois          | 0  | 1  | Saint Vincent                 | 8  | 0  |
| Eckerd                    | 0  | 3  | Saint Xavier                  | 0  | 5  |
| Edinboro                  | 1  | 0  | Salem-Teikyo                  | 1  | 0  |
| Faulkner                  | 1  | 0  | Savannah Art & Design         | 0  | 1  |
| Findlay                   | 15 | 19 | Seton Hill                    | 7  | 0  |
| Flagler                   | 1  | 1  | <b>Shawnee State</b>          | 37 | 4  |
| Florissant Valley         | 0  | 1  | Siena Heights                 | 3  | 1  |
| Franklin                  | 1  | 5  | Slippery Rock                 | 0  | 1  |
| Fresno Pacific            | 0  | 1  | SW Assemblies of God          | 2  | 0  |
| Geneva                    | 7  | 1  | <b>Spring Arbor</b>           | 17 | 14 |
| Georgetown                | 1  | 4  | Sue Bennett                   | 1  | 0  |
| <b>Glennville State</b>   | 2  | 0  | Taylor                        | 8  | 32 |
| Goshen                    | 1  | 0  | Taylor-Fort Wayne             | 4  | 0  |
| Grace                     | 24 | 13 | Tennessee Temple              | 2  | 0  |
| Hanover                   | 5  | 4  | Thomas More                   | 1  | 5  |
| <b>Harding</b>            | 0  | 1  | <b>Tiffin</b>                 | 34 | 10 |
| Hastings                  | 0  | 1  | Toledo                        | 2  | 0  |
| Heidelberg                | 9  | 4  | Trevecca Nazarene             | 0  | 1  |
| <b>Henderson State</b>    | 0  | 1  | Tri-State                     | 0  | 2  |
| Hillsdale                 | 1  | 0  | Trinity Christian             | 3  | 0  |
| Hiram                     | 2  | 0  | Trinity International         | 7  | 1  |
| Hope International        | 2  | 0  | Union TN                      | 1  | 2  |
| Houghton                  | 5  | 1  | <b>Urbana</b>                 | 57 | 4  |
| Huntington                | 6  | 4  | <b>Ursuline</b>               | 5  | 0  |
| Illinois-Springfield      | 3  | 0  | <b>Walsh</b>                  | 17 | 34 |
| Illinois Tech             | 0  | 2  | Warner Southern               | 3  | 0  |
| <b>Indiana-East</b>       | 1  | 2  | Webber International          | 2  | 0  |
| <b>Indiana PA</b>         | 1  | 0  | <b>West Georgia</b>           | 0  | 1  |
| Indiana-Southeast         | 1  | 3  | West Liberty                  | 2  | 0  |
| Indiana Tech              | 2  | 4  | <b>West Virginia Tech</b>     | 1  | 0  |
| <b>Indiana Wesleyan</b>   | 19 | 18 | <b>West Virginia Wesleyan</b> | 0  | 1  |
| Indianapolis              | 9  | 3  | Western                       | 1  | 0  |
| Iowa Wesleyan             | 0  | 1  | Western Baptist               | 1  | 0  |
| IUPUI-Indianapolis        | 4  | 1  | <b>Wheeling Jesuit</b>        | 0  | 1  |
| John Carroll              | 0  | 3  | Wilberforce                   | 3  | 0  |
| Judson                    | 2  | 1  | Wilmington                    | 40 | 18 |
| Kent State                | 2  | 1  | Windsor ONT                   | 1  | 0  |
| <b>Kentucky Wesleyan</b>  | 1  | 0  | Wittenberg                    | 28 | 22 |
| Kenyon                    | 12 | 3  | Wooster                       | 8  | 6  |
| King                      | 1  | 0  | Wright State                  | 4  | 5  |
| Lake Erie                 | 5  | 2  | Xavier                        | 7  | 5  |
| Lee                       | 0  | 3  | Youngstown State              | 0  | 1  |
| Lindenwood                | 1  | 1  |                               |    |    |
| Madonna                   | 1  | 3  |                               |    |    |

2011 Opponents in Bold