

11-1-2012

Cedarville vs. Mount Vernon

Cedarville University

Follow this and additional works at: https://digitalcommons.cedarville.edu/volleyball_programs



Part of the [Higher Education Commons](#), and the [Sports Studies Commons](#)

Recommended Citation

Cedarville University, "Cedarville vs. Mount Vernon" (2012). *Volleyball Programs*. 51.
https://digitalcommons.cedarville.edu/volleyball_programs/51

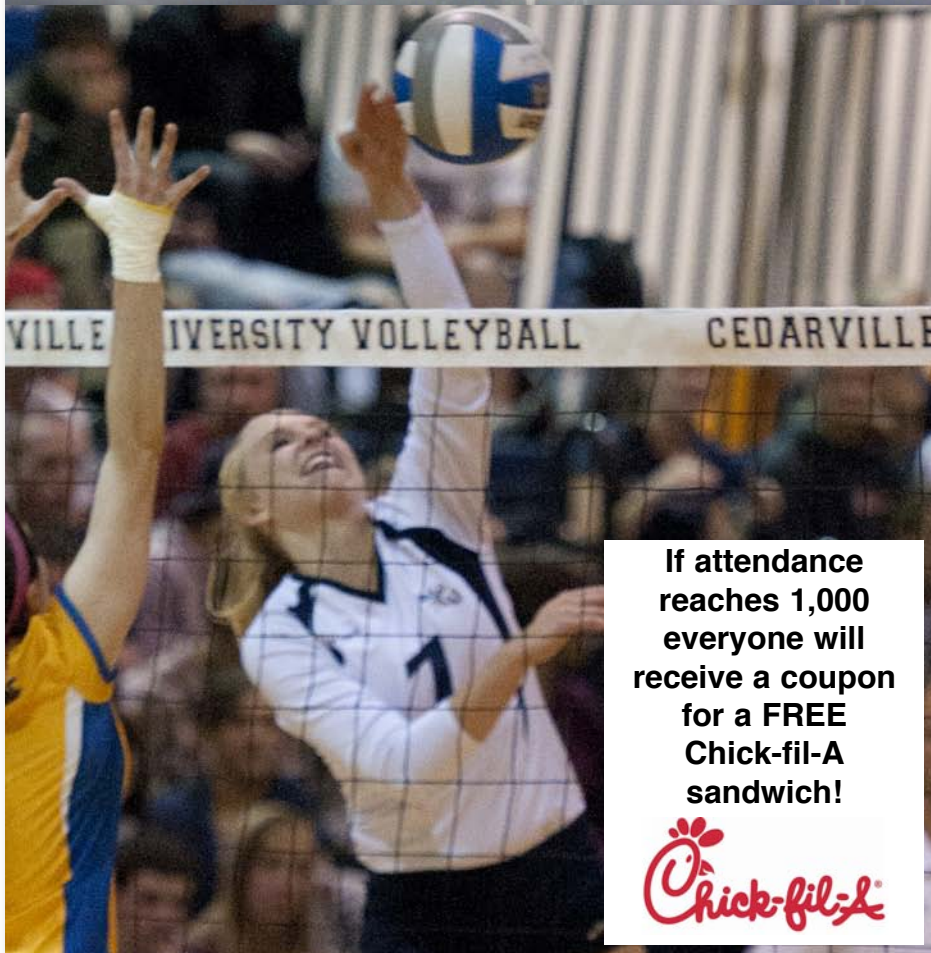
This Program is brought to you for free and open access by DigitalCommons@Cedarville, a service of the Centennial Library. It has been accepted for inclusion in Volleyball Programs by an authorized administrator of DigitalCommons@Cedarville. For more information, please contact digitalcommons@cedarville.edu.

GAME DAY

Cedarville University vs. Mount Vernon Nazarene Univ.
Thursday, November 1, 2012 • 7:00 p.m.



PACK the HOUSE White-Out Night



If attendance
reaches 1,000
everyone will
receive a coupon
for a FREE
Chick-fil-A
sandwich!



INSIDE GAME DAY

Lady Jacket Volleyball Blog	2
Cedarville Schedule/Results	3
Tonight's Match Info	3
Head Coach Doug Walters	4
Lady Jacket Profiles	4
G-MAC Volleyball	5
Cedarville Roster/Quick Facts	6
NCAA II National Rankings	6
MVNU Roster/Quick Facts	7
2012 Lady Jacket VB Stats	8
2012 Cougar VB Stats	9
CU All-Time Volleyball Roster	10
Cedarville Career Leaders	11
CU All-Time Series Records	11
Meet the 2012 Lady Jackets	12



13 E. Chillicothe St.,
Cedarville, OH

→ **766-7299** ←



yellowjackets.cedarville.edu



Lady Jacket Volleyball Blog

October 29, 2012

This season is just flying by - and what a season it has been! We are now 25-5, and hoping to push forward with a 30+ win season, something that the volleyball team has not accomplished in the past few years. The long hours during the summer and in season are all coming into play as we come closer and closer to the ultimate goal: the NCAA II National Tournament. Each point, set, and ultimately match are crucial to our bid in the post season playoffs. While we suffered quite a few injuries this week, we all pulled together and played the roles we were called to play and came out on top.

Tuesday of this week we headed out on the big Buckeye bus for Ursuline College. This was a team with much fewer wins than losses, and we should have beaten them in four sets. Unfortunately, we sometimes have this problem where we don't start very well. Tuesday happened to be one of those days and we lost the first set: Ursuline came ready to play and work hard, and we didn't seem ready for that. However, sets two, three, and four were different stories. We sided out well, were turning digs into points, and on some points were unstoppable. In the middle of that match Tori went down with a sprained ankle, and it looked like a bad one. Sarah Simpson stepped in no problem and played a great game. I really admire her for coming in cold off the bench under a somewhat stressful situation and jumping right into the mix with no problem. We left with another win under our belt and stomachs satisfied with Chipotle for dinner!

Wednesday was an odd day for the team to say the least. It's already weird when a teammate is sitting out, but little did we know that two more would be injured by the end of that day. Kelsey got a concussion and Alyssa hurt her shin pretty badly. Thankfully, Alyssa could still play or we

would have had some crazy lineup changes for the weekend! Kelsey, unfortunately, was having a lot of symptoms and went home for the weekend to get rest and avoid the noise and harsh lighting of the gym. We hope to have her back on the court as soon as possible because until then a vital piece of our team dynamic is missing - she brings humor, encouragement, and great athleticism to the team! Until then, Alyssa is doing a great job filling her shoes and working hard on the right side.



The win on Friday against Notre Dame College was quick and fun, and we were all looking forward to the next day's game against Charleston, a solid opponent. The last time we played them we won in four sets, and this time we were looking for a three-set win. We won the first set and fought back from a deficit in the second set to go into our ten-minute break before the next set. Well, as coach always tells us not to do after the infamous break, we laid the "proverbial egg" and narrowly lost that set. We ended up once again with a win in four, and were happy overall with our performance.

We are really looking forward to our next four home games, especially our White Out Night on November 1!!! If we get 1,000 fans there wearing white, everyone in attendance gets a coupon for a free Chick-fil-A sandwich!!!

Come out and back the Jackets!!!! In the words of Coach, "Can I get a Hollaaaaa?!"

Hannah Wagner is a sophomore undeclared major from Claremont, Calif. She is in her second season with the Lady Jackets as an outside hitter.



Providing live video streaming of Lady Jacket volleyball....

Nov. 1
vs. Mount Vernon Nazarene

yellowjackets.cedarville.edu



Taste All That Life Has To Offer.



Experience the best things in life at the new Courtyard by Marriott in Downtown Springfield. Stay for a night or for a week in our beautifully-renovated hotel. Enjoy our garden pool, hot tub, business center and complimentary high-speed Internet. Taste delicious fare at the Mela Urban Bistro. Or just unwind at the Mela Lounge.

taste|life

100 south fountain • downtown springfield • 937.322.3600 • www.melaurbanbistro.com

BUCKEYE
CHARTERS

"Official Charter Company of the
Cedarville Yellow Jackets"

937-879-3000

8250 Expansion Way • Dayton, OH 45424

BUCKEYE
CHARTERS



BACK THE JACKETS

2012



Cedarville.YellowJackets



@CUYellowJackets



cuyellowjackets



CedarvilleAthletics



**Combs Interior
Specialties Inc.**

www.combsinterior.com

471 Funderburg Road
Fairborn, Ohio 45324

Phone: 937-879-2047 • Cell: 937-604-3134

Fax: 937-879-0003

Mark Combs - CEO/President - mcombs@combsinterior.com

2012 Schedule/Results



(26-5 Overall, 5-0 G-MAC)

& Indiana Invitational; Indiana, PA
+ Charleston Invitational; Charleston, WV
% Wheeling Jesuit Invitational; Wheeling, WV

Aug. 31	vs. LeMoyne&	Indiana, PA	W 3-2
Aug. 31	vs. Michigan Tech&	Indiana, PA	W 3-2
Sept. 1	vs. Roberts Wesleyan&	Indiana, PA	W 3-2
Sept. 1	at Indiana PA&	Indiana, PA	W 3-0
Sept. 4	MALONE	Cedarville	W 3-2
Sept. 7	vs. Mars Hills+	Charleston, WV	W 3-1
Sept. 7	vs. Chowan+	Charleston, WV	W 3-0
Sept. 8	vs. Virginia Union+	Charleston, WV	W 3-0
Sept. 8	at Charleston+	Charleston, WV	W 3-1
Sept. 11	at Southern Indiana	Evansville, IN	L 1-3
Sept. 15	KENTUCKY STATE	Cedarville	W 3-0
Sept. 15	WEST LIBERTY	Cedarville	W 3-0
Sept. 18	at Urbana*	Urbana, OH	W 3-0
Sept. 21	vs. Alderson-Broadus%	Wheeling, WV	L 0-3
Sept. 21	vs. Glenville State%	Wheeling, WV	W 3-0
Sept. 22	vs. Ohio Valley%	Wheeling, WV	W 3-0
Sept. 22	at Wheeling Jesuit%	Wheeling, WV	L 0-3
Sept. 25	URSULINE* **	Cedarville	W 3-0
Sept. 29	vs. Ohio Valley	South Euclid, OH	W 3-0
Sept. 29	at Notre Dame OH	South Euclid, OH	W 3-1
Oct. 2	OHIO DOMINICAN**	Cedarville	W 3-0
Oct. 6	TREVECCA NAZ.*	Cedarville	W 3-0
Oct. 6	SHAWNEE STATE	Cedarville	W 3-0
Oct. 9	at Indiana East	Richmond, IN	L 1-3
Oct. 13	WEST VA. WESLEYAN**	Cedarville	W 3-0
Oct. 17	at Indianapolis	Indianapolis, IN	L 0-3
Oct. 18	at Kentucky Wesleyan	Owensboro, KY	W 3-1
Oct. 23	at Ursuline*	Pepper Pike, OH	W 3-0
Oct. 26	NOTRE DAME OH	Cedarville	W 3-0
Oct. 27	CHARLESTON**	Cedarville	W 3-1
Oct. 30	URBANA* **	Cedarville	W 3-0
Nov. 1	MT. VERNON NAZARENE**	Cedarville	7 pm
Nov. 2	CENTRAL STATE*	Cedarville	7 pm
Nov. 6	CINCINNATI CHRISTIAN	Cedarville	7 pm
Nov. 10	at Trevecca Nazarene*	Nashville, TN	11 am
Nov. 10	vs. Central State*	Nashville, TN	1 pm

* Great Midwest Athletic Conference match

All Starting Times Local

Home matches in **BOLD ALL CAPS**

** Live Video Streaming on Stretch Internet GameCentral



Tonight's Match

The Cedarville University women's volleyball team hosts the Mount Vernon Nazarene University Cougars in a non-conference match tonight in the Callan Athletic Center. It is Pack the House White Out Night with the goal of 1,000 fans in attendance.

The Lady Jackets are 26-5 and ranked #9 in this week's National Christian College Athletic Association (NCCAA) Division I Poll. Cedarville's most recent action was a 3-0 G-MAC win over Urbana on Tuesday to move their home record this year to 11-0.

The Cougars, former NAIA members of the American Midwest Conference and now playing in the Crossroads League, are 21-13 on the year including splitting four matches played at the Cornerstone/Aquinas Classic last Saturday.

Outside hitter Hannah Wagner, a 6-2 sophomore and reigning G-MAC Player of the Week, paces the Cedarville offensive efforts with 318 kills and 83 blocks. Wagner, coming off two career-best 19 kill performances last week, also leads with a .299 attack percentage.

Stephanie Rogers, a junior 5-11 middle hitter, is second to Wagner with 273 kills, 80 blocks and a .297 attack percentage.

Sophomore setter Maddie Anderson has a team-leading 669 assists and 66 service aces. Senior Erica Bartholomew has tallied 453 assists on the year while ranking fourth all-time at CU.

Senior Heather Kirkpatrick, one of just five Lady Jacket players to reach 2,000 career digs, leads the CU defense with 458 digs in 2012.

Junior Kendra Votaw, a 5-10 middle hitter, leads a talented front line for the Cougars with 419 kills.

Senior middle hitter Gina Porto is second with 376 kills while topping the blocking stats with 106.

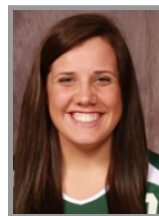
Senior setter Lauren Percival directs the offense with 1,218 assists.

Head Coach Paul Swanson is in his 29th year at MVNU and 30th overall (999-365) as a collegiate coach. A win tonight would be the 1,000th of his coaching career.

The Cougars lead the all-time series with their long-time rival Lady Jackets by a 40-25 margin. Mount Vernon posted a three-set sweep (25-21, 25-19, 25-18) over Cedarville last Nov. 3 in a match played in Mount Vernon, Ohio.



Hannah Wagner



Kendra Votaw

2012 Stat Comparison



Current Record	26-5	21-13
Sets Played	109	131
Kills	1390	1565 *
Errors	630	592 *
Total Attacks	3782	4467 *
Attack Pct.	.201	.218 *
Kills/Set	12.8 *	11.9
Assists	1299	1383 *
Assists/Set	11.9 *	10.6
Service Aces	252 *	175
Serving Errors	262	194 *
Serving Attempts	2519	2872 *
Serve Pct.	.896	.932 *
Aces/Set	2.3 *	1.3
Serve Receive Errors	109 *	187
Attempts	1972	2437 *
Reception Pct.	.945 *	.923
Digs	1713	1936 *
Digs/Set	15.7 *	14.8
Block Solo	53	89 *
Block Assists	302 *	248
Total Blocks	204	213 *
Blocks/Set	1.9 *	1.6
Block Errors	68	11 *
Ball Handling Errors	41 *	50



Comfort Suites

121 Raydo Circle
Springfield, OH
45506

937-322-0707

- All Suite Rooms
- Hot Deluxe Breakfast

Only 12 miles from CU!

Proud to support the Yellow Jackets!!



After the game great meals are waiting for you in Beaver Creek!

It is our pleasure and intention to cater your meeting, event, or party with the same fresh food served hot or cold which ever you prefer.

We will be on time and ready to make your event a success.

Looking forward to serving you!

Visit our website today or find us on Facebook.

On line ordering is now available.

Beaver Creek Free Standing Unit
2360 North Fairfield Road
Beaver Creek, Ohio 45431
937.320.1228

The Mall at Fairfield Commons
2727 North Fairfield Road
Beaver Creek, Ohio 45431
937.320.1224

www.cfarestaurant.com/beaver creek/home www.cfarestaurant.com/fairfieldcommons/home

Meet Coach Doug Walters



Doug Walters has been the head volleyball coach at Cedarville University since 2008. He is the sixth head coach in the program's history and the first male to serve in the capacity.

The Lady Jackets have posted 82 victories during Walters' four-year tenure. CU finished with a 22-18 mark in 2011 during the school's NCAA Division II provisional year and was the No. 1 seed in the Ohio Independent Championship Tournament.

Walters' first season with the Lady Jackets was a memorable one as he guided the program to its third National Christian College Athletic Association title in four years. He was tabbed the 2008 NCCAA National Coach of the Year.

Cedarville finished with a 27-12 record overall and tied for fourth place out of 15 teams in the American Midwest Conference with a 10-4 mark. The Lady Jackets qualified for the AMC Tournament and advanced to the semifinals.

Cedarville was 15-23 overall in 2009. However, the Lady Jackets were the #2 seed in the AMC Tournament after going 8-4 in the league. CU was 18-20 and 6-4 AMC in 2010 while advancing to the semifinals of the conference tournament.

Walters came to Cedarville after assembling a 128-73 record in nine years of high school coaching in southern Ohio. He spent his last two seasons at the prep level at Milford High School, a Division I program near Cincinnati.

Walters previously spent seven years building Eastern High School in Sardinia into one of the top Division III programs in Ohio. The Warriors, who were ranked in the state's Top 10 in three different seasons, won four conference titles, two sectional championships, and were the district runner-up once. He was a four-time conference Coach of the Year and saw eight players continue their careers at the collegiate level.

Walters is the founder and former director of the Greater Miami Volleyball Club. The GMVC was started in 2003 and is a Junior Olympic organization that has quickly built a reputation as one of the top regional clubs in Cincinnati.

Walters continues to be involved at the club level. He is the Elevation Volleyball Club 17's National Team Coach based out of Mason, Ohio.

Additionally, Walters is the volleyball chair of the Great Midwest Athletic Conference. He serves as the G-MAC rep to the AVCA Division II Head Coaches Committee and is a member of the AVCA National Poll Committee.

Walters is a 1997 graduate of Northern Kentucky University and he earned his master's degree from the University of Dayton in 2003. Doug and his wife, Angela, reside in Hamersville, Ohio with their daughter Caitlyn, 10.

The Walters File:

- 2008 NCCAA National Champions
- 2008 NCCAA National Coach of the Year

- 1 NAIA National Player of the Week
- 6 NCCAA All-Americans
- 1 NCCAA National Tournament MVP
- 2 NCCAA National All-Tournament players
- 7 NAIA Scholar-Athletes
- 10 NCCAA Scholar-Athletes
- 1 Conference Libero of the Year
- 1 Conference Freshman of the Year
- 8 Conference players
- 10 All-NCCAA Midwest Region players

Lady Jacket Profiles



Heather Kirkpatrick
5-7 • Senior • Libero/DS
Huntsville, AL
Grissom High School

#2

Heather Kirkpatrick is in her final season with the Lady Jacket volleyball team.....will serve as one of three co-captains in 2012.....appeared in 39 of the 40 matches last fall.....led team in serving percentage (.933) and digs (436) for the second consecutive sea-

son.....posted a team season-high 26 digs in a three-set victory at Urbana.....tallied double figures in digs in 24 other matches during 2011.....registered twin digits in digs in nine of the last 10 matches she appeared in at the end of the campaign.....tallied 32 service aces and a third best .27 aces/set.....totaled a team-high 776 serve receives with a second-best .936 passing percentage.....ranks in the Top 10 all-time at CU for serving percentage.....one of just five Lady Jackets to reach 2,000 career digs.

2010 - One of seven players to appear in all 38 matches during the campaign.....led team with 574 digs (4.28/set) and a .973 serving percentage.....tied a career-high of 36 digs at Ohio Dominican.....totaled 20+ digs in 11 matches and double figures in 29 of the 38 contests last fall.....put up a second-best 518 serving attempts.....registered a .940 serve receive effort with 76 errors in 1,276 total attempts.....fourth on the squad with 16 service aces.....served without an error in 27 of 38 matches including a streak of nine straight contests (113 attempts).....put together a 1.000 serve receive mark with 45 attempts against Spring Arbor in the NCCAA Midwest Regional.

2009 - One of three players to appear in all 38 matches and all 150 sets.....led team with 601 digs and 4.01 digs per set.....recorded a .938 serve receive percentage to lead the team.....registered a team-best .973 serving percentage with just 13 errors in 475 attempts.....produced 20+ digs in seven matches including a season-best 36 in a five-set non-conference match at Ohio Dominican.....totaled double figure digs in 31 contests.....served without an error during seven consecutive matches for a total of 77 attempts.....passed a perfect 1.000 percent (40 attempts/0 errors) in her first collegiate volleyball match.....earned American Midwest Conference Honorable Mention.

High School - Produced a four-year volleyball career at Grissom High School.....earned All-City honorable mention in 2008.....led team to a 52-10 record and a regional championship.....squad finished the campaign sixth in the Maxpreps.com Alabama state rankings.....club team made six consecutive trips to the Junior National Championships.

Personal - Nursing major at Cedarville University.....born 10/22/90 in Oklahoma City, OK.....daughter of Jim and Cynthia Kirkpatrick.....has an older sister and a younger brother.



Hidy

Family of Cars

Beavercreek, Ohio

937-426-9564



- Honda
- Ford
- Hyundai
- Acura



Great Midwest Athletic Conference - Volleyball



www.G-MACsports.com

The Great Midwest Athletic Conference (G-MAC), which was approved by the NCAA Division II Membership Committee in February of 2012 as a member conference effective September 1, 2012, will be working through an educational assessment program with the goal of beginning competition as the 24th active NCAA Division II conference by 2013-14.

The G-MAC features active and reclassifying members from Ohio, Kentucky, Tennessee, Virginia, and West Virginia. Charter members of the G-MAC include Cedarville University, Central State University, Kentucky Wesleyan College, Trevecca Nazarene University, Urbana University and Ursuline College. The G-MAC expanded with the inclusion of Alderson-Broadbent College, Davis & Elkins College, and Ohio Valley University as active DII members in 2012.

The University of Virginia's College at Wise was approved as a Full Member, while Georgetown College was added as a Provisional Member in 2012 as well.

The G-MAC, headquartered in the Indianapolis metro area, will sponsor 12 championships in 2012-13 as a NCAA Division II member conference.



Cedarville Univ. (26-5)		
8/31	vs. LeMoyne	W 3-2
8/31	vs. Mich. Tech	W 3-2
9/1	vs. Robt. Wes.	W 3-2
9/1	at Indiana PA	W 3-0
9/4	MALONE	W 3-2
9/7	vs. Mars Hills	W 3-1
9/7	vs. Chowan	W 3-0
9/8	vs. VA Union	W 3-0
9/8	at Charleston	W 3-1
9/11	at So. Indiana	L 1-3
9/15	KENTUCKY ST.	W 3-0
9/15	WEST LIBERTY	W 3-0
9/18	at Urbana*	W 3-0
9/21	vs. Alderson-Broad.	L 0-3
9/21	vs. Glenville St.	W 3-0
9/22	vs. Ohio Valley	W 3-0
9/22	at Wheeling Jes.	L 0-3
9/25	URSULINE*	W 3-0
9/29	vs. Ohio Valley	W 3-0
9/29	at Notre Dame OH	W 3-1
10/2	OH DOMINICAN	W 3-0
10/6	TREV. NAZ.*	W 3-0
10/6	SHAWNEE ST.	W 3-0
10/9	at Indiana-East	L 1-3
10/13	WV WESLEYAN**	W 3-0
10/17	at Indianapolis	L 0-3
10/18	at KY Wesleyan	W 3-1
10/23	at Ursuline*	W 3-1
10/26	NOTRE DAME OH	W 3-0
10/27	CHARLESTON	W 3-1
10/30	URBANA*	W 3-0
11/1	MT. VERNON NAZ.	7 pm
11/2	CENTRAL ST.*	7 pm
11/6	CIN. CHRISTIAN	7 pm
11/10	at Trev. Naz.*	11 am
11/10	vs. Central St.*	1 pm

* Great Midwest Athletic Conference



Central St. Univ. (0-13)		
9/11	EARLHAM	L 0-3
9/13	at Cinc. Chr.	L 0-3
9/19	WILMINGTON	L 0-3
9/21	URSULINE*	L 0-3
9/25	at Notre Dame OH	L 0-3
9/26	UC-CLERMONT	L 0-3
10/5	Trev. Nazarene*	L 0-3
10/9	URBANA*	L 0-3
10/15	at Ursuline*	L 0-3
10/18	at UC-Clermont	L 0-3
10/20	at Earlham	L 0-3
10/23	at Urbana*	L 0-3
10/27	NOTRE DAME OH	L 0-3
11/1	CIN. CHR.	7 pm
11/2	at Cedarville*	7 pm
11/7	WV TECH	7 pm
11/10	at Trev. Naz.*	3 pm
10/10	Cedarville* (at TNU)	7 pm

* Great Midwest Athletic Conference



Trevecca Naz. Univ. (19-12)		
8/31	COVENANT	W 3-0
9/1	KY. CHRISTIAN	W 3-2
9/1	MARTIN-METH.	W 3-0
9/6	FREED-HARD.	W 3-1
9/7	BRESCIA	W 3-0
9/11	KY. WESLEYAN	W 3-2
9/14	vs. Ind. Wes.	L 0-3
9/14	vs. Robt. Morris	W 3-0
9/15	vs. Georgetown	L 0-3
9/15	vs. Cornerstone	L 0-3
9/18	at Oakland City	W 3-2
9/21	vs. Williams	L 2-3
9/21	vs. Maryville	W 3-2
9/22	vs. Rand. Macon	L 0-3
9/22	vs. Elmhurst	L 2-3
9/25	at Union	W 3-1
9/27	at Bethel	L 0-3
9/29	at Urbana*	L 2-3
9/29	vs. Ursuline*	W 3-0
10/2	MARTIN-METH.	W 3-1
10/5	vs. Cen. St.*	W 3-0
10/6	at Cedarville*	L 0-3
10/6	vs. Ursuline*	W 3-0
10/9	at Freed-Hard.	L 2-3
10/11	CUMBERLAND	W 3-1
10/13	CUMBERLANDS	L 1-3
10/13	COVENANT	W 3-0
10/16	UNION	W 3-1
10/18	at Martin-Meth.	W 3-1
10/23	BETHEL	W 3-0
10/25	OAKLAND CITY	L 1-3
11/1	at Cumberland	6 pm
11/9	URBANA*	8 pm
11/10	CEDARVILLE*	11 am
11/10	CENTRAL ST.*	1 pm

* Great Midwest Athletic Conference



Urbana University (9-18)		
8/31	at Fairmont St.	L 0-3
8/31	vs. Seton Hill	L 1-3
9/1	vs. Pitt.-Johns.	L 0-3
9/1	vs. W. Liberty	L 2-3
9/4	WV STATE	W 3-0
9/7	vs. Wayne St.	L 0-3
9/7	at Findlay	L 0-3
9/8	vs. Hillsdale	L 0-3
9/8	vs. Calif. PA	L 0-3
9/12	at Charleston	L 0-3
9/15	at Wheeling Jes.	L 0-3
9/15	vs. Lockhaven	L 0-3
9/18	CEDARVILLE*	L 0-3
9/25	at NW Ohio	L 0-3
9/27	at Kentucky St.	W 3-0
9/29	TREV. NAZ.*	W 3-2
9/29	URSULINE*	W 3-0
10/6	FAIRMONT ST.	L 1-3
10/6	WITTENBERG	L 2-3
10/9	at Central St.*	W 3-0
10/12	at Notre Dame OH	W 3-2
10/16	at IU-East	L 0-3
10/17	ALD.-BROADBENT	L 2-3
10/19	NOTRE DAME OH	W 3-0
10/23	CENTRAL ST.*	W 3-0
10/25	at West Liberty	L 0-3
10/27	KY STATE	W 3-0
10/30	at Cedarville*	L 0-3
11/2	at Ursuline*	7 pm
11/5	at Trev. Naz.*	4 pm
11/10	vs. Lewis	4 pm
11/10	at Ky. Wesleyan*	6 pm

* Great Midwest Athletic Conference



Ursuline College (6-27)		
8/31	vs. West Liberty	L 0-3
8/31	vs. Pitt.-John.	L 1-3
9/1	vs. Shepherd	L 0-3
9/1	vs. WV Wes.	L 2-3
9/4	at Tiffin	L 0-3
9/7	at Ky Wesleyan	L 1-3
9/7	vs. Glenville St.	L 2-3
9/8	vs. Bluefield	W 3-1
9/8	vs. Oakland City	L 1-3
9/11	at Edinboro	L 2-3
9/15	LE MOYNE	L 0-3
9/15	MILLERSVILLE	L 2-3
9/18	MERCYHURST	L 1-3
9/21	at Central St.*	W 3-0
9/22	at NW Ohio	L 1-3
9/22	vs. IU-Kokomo	L 1-3
9/25	at Cedarville*	L 0-3
9/25	POINT PARK	L 0-3
9/29	at Urbana*	L 0-3
9/29	vs. Trev. Naz.*	L 0-3
10/2	at John Carroll	L 0-3
10/6	vs. Trev. Naz.*	L 0-3
10/6	vs. Shawnee St.	L 0-3
10/8	at Rochester	L 0-3
10/8	vs. Aquinas	L 0-3
10/10	OBERLIN	W 3-0
10/13	FAIRMONT ST.	L 0-3
10/15	CENTRAL ST.*	W 3-0
10/16	TIFFIN	L 0-3
10/23	CEDARVILLE*	L 1-3
10/25	KY STATE	W 3-0
10/27	at CWRU	L 0-3
10/27	vs. Kenyon	W 3-0
11/2	URBANA*	7 pm
11/6	EDINBORO	7 pm

* Great Midwest Athletic Conference



2012 Volleyball Standings



(thru 10/30/12)		G-MAC			Overall		
School	W	L	Pct.	W	L	Pct.	Streak
Cedarville	5	0	1.000	26	5	.839	W5
Urbana	4	2	.667	9	19	.333	L1
Trevecca Nazarene	3	2	.600	19	12	.613	L1
Ursuline	2	5	.286	6	27	.182	W1
Central State	0	5	.000	0	13	.000	L13



Volleyball Player of the Week (Oct. 21-27)

Hannah Wagner
Cedarville • Sophomore • Claremont, CA

Wagner pushed the Yellow Jackets to another undefeated week of action, increasing the teams overall record to a conference best 25-5, including a conference win over Ursuline to improve to a perfect 4-0 in the G-MAC.

This season Wagner has tallied 18 kills in a match three-times, however this week she established a career-high - twice - with 19 kills at Ursuline (19-1-38 - .474 attack pct.) and 19 kills over visiting Charleston (19-5-35 - .400 attack pct.). She finished the week with 44 kills, 13 digs, four assists and a pair of blocks.

Wagner now leads her team with 308 kills and also leads her team and the conference with 80 total blocks.

Cedarville University "Lady Jackets" (26-5)

Cedarville, Ohio

Head Coach: Doug Walters



No	Player	Pos	Ht	Yr	Hometown	High School
1	Erica Bartholomew	S	5-5	Sr	Coloma, MI	Coloma
2	Heather Kirkpatrick	L/DS	5-7	Sr	Huntsville, AL	Grissom
3	Hannah Wagner	OH	6-2	So	Claremont, CA	Upland Christian
4	Tori Thompson	MH	6-1	Fr	Columbus, OH	Tree of Life
5	Amanda Bell	OH	5-10	So	Ankeny, IA	Grandview Park Bapt.
6	Kelsey Christiansen	MH/OH	6-0	Jr	Fishers, IN	Heritage Christian
7	Maddie Anderson	S	5-9	So	Carmel, IN	Heritage Christian
8	Sarah Simpson	OH/MH	5-10	Fr	Reading, PA	Berks Catholic
9	Stephanie Rogers	MH	5-11	Jr	Carmel, IN	Heritage Christian
10	Alyssa Barkley	MH/OH	5-11	Fr	Encinitas, CA	Santa Fe Christian
11	Lori Inkrott	OH	5-10	Fr	Wooster, OH	Triway
12	Lauren Williams	DS	5-6	Jr	Cleveland, OH	Trinity
14	Kara Yutzy	DS	5-8	Sr	W. Jefferson, OH	Shekinah Christian

AVCA NCAA II Coaches Top 25 Poll

2012 Week #9 Poll: October 29, 2012

Rank	School (First-Place Votes)	Total Points	2012 Record	Previous Rank
1	Southwest Minnesota State (29)	796	23-1	1
2	Concordia-St. Paul (2)	749	20-3	2
3	Washburn	732	25-1	3
4	Nebraska-Kearney	687	26-2	4
5	Minnesota Duluth	665	23-2	5
6	Central Missouri	632	20-4	7
7	Tampa	615	21-3	6
8	BYU-Hawaii (1)	593	18-2	8
9	Angelo State	549	22-3	9
10	Indianapolis	502	24-3	10
11	West Texas A&M	436	21-4	11
12	Fresno Pacific	424	19-1	13
13	Regis	388	19-6	15
14	Colorado School of Mines	372	19-5	16
15	Truman	340	23-4	17
16	Wayne State (Neb.)	325	19-7	18
17	Western Washington	277	18-3	12
18	Wheeling Jesuit	235	27-2	19
19	West Florida	215	20-7	20
20	Minnesota State	198	15-8	14
21	Grand Canyon	141	20-5	21
22	Adams State	121	19-4	25
23	Metro State	99	15-8	23
24	UC San Diego	87	17-6	24
25	Ferris State	67	19-5	NR

Others Receiving Votes and listed on two or more ballots: Arkansas-Fort Smith 31; Cal State San Bernardino 31; Central Washington 17; Sonoma State 13; Harding 12; Palm Beach Atlantic 12; Northwood (MI) 6; Grand Valley State 4

11 teams mentioned on only one ballot for a total of 29 combined points.

Dropped Out: Central Washington 22

Next Poll: November 5, 2012

Cedarville Quick Facts

Founded	1887
President	Dr. Bill Brown
Enrollment	3,400
Affiliation	NCAA II, NCCAA I
Nickname	Yellow Jackets
School Colors	Blue and Yellow
Conference	Great Midwest Athletic
Athletic Director	Dr. Alan Geist
Sports Information Director	Mark Womack
Web Site	www.cedarville.edu
2011 Record	22-18

Colonial Pizza and Deli

98 North Main • Cedarville, Ohio 45314

766-5779

HOURS:

— Sunday —

5:00 pm to 11:00 pm

— Monday thru Thursday —

11:00 am to 11:00 pm

— Friday & Saturday —

11:00 am to 12:00 pm

*"Serving Its
Hometown for
Over a Decade"*

*Owned by Ron
and Sandy
Acton*



Mount Vernon Nazarene Univ. "Cougars" (21-13)

Mount Vernon, OH

Head Coach: Paul Swanson



No	Player	Pos	Ht	Yr	Hometown	High School
1	Kelly McQuade	DS	5-7	Fr	Mansfield, OH	Mansfield Christian
2	Lauren Percival	S	5-9	Sr	Elyria, OH	Amherst Steele
5	Paige Hagans	DS	5-6	Sr	West Salem, OH	Northwestern
6	Kaylee Hewitt	L/OH	5-8	Sr	Alanson, MI	Harbor Light Christian
7	Haley Nofziger	OH	5-8	Sr	Wauseon, OH	Pettisville
8	Gina Porto	MH	6-0	Sr	Tipp City, OH	Tippecanoe
10	Kendra Votaw	MH	5-10	Jr	Marengo, OH	Gilead Christian
12	Shayla Pierce	S/OH	5-8	Fr	Marengo, OH	Highland
13	Kelly Mast	MH	5-11	Jr	Mount Gilead, OH	Gilead Christian
14	Morgan Pridemore	DS	5-7	Jr	Springfield, OH	Greenon
15	Molly Gerber	OH	5-10	So	New Philadelphia, OH	Garaway
16	Emily Oberschlake	DS	5-6	Fr	West College Corner, IN	Union County

US DOT No. 077949
Agent for United

PUCO No. 1455HG
OHIO MOVING
SAME OR NEXT DAY DELIVERY
"Moving for three generations"

BBB
ACCREDITED BUSINESS

NATIONAL AND WORLD WIDE PRE-PLANNED MOVING

RESIDENTIAL • COMMERCIAL • OFFICE • EXPERT PACKING & CRATING

ROLLINS for Moving
LOCAL-NATIONAL-WORLD WIDE WITH THE SAME QUALITY SERVICE
PROFESSIONAL PACKING AND CRATING

ROLLINS for Storage
FULLY INSURED CONTAINERIZED STORAGE

ROLLINS for Care
FULL VALUE PROTECTION

1900 E. LEFFEL LANE SPRINGFIELD, OHIO 45505
ROLLINS MOVING & STORAGE INC.
325-2484
www.rollinsmoving.com

Mount Vernon Nazarene Quick Facts

Founded	1968
President	.NA
Enrollment	2,267
Affiliation	.NAIA & NCCAA
Nickname	.Cougars
School Colors	.Blue and Green
Conference	.Crossroads League
Athletic Director	.Paul Swanson
Sports Information Director	.Dave Parsons
Web Site	.www.mvnu.edu
2011 Record	.12-23 (5-13)

Colonial Pizza and Deli

98 North Main • Cedarville, Ohio 45314

766-5779

HOURS:
—Sunday—
5:00 pm to 11:00 pm
—Monday thru Thursday—
11:00 am to 11:00 pm
—Friday & Saturday—
11:00 am to 12:00 pm

"Serving Its
Hometown for
Over a Decade"

Owned by Ron
and Sandy
Acton



2012 Cedarville University Volleyball Statistics

Overall record: 26-5 Conf: 5-0 Home: 11-0 Away: 6-4 Neutral: 9-1

##	Player	Attack							Set				Serve				
		sp	mp-ms	k	k/s	e	ta	pct	a	a/s	ta	pct	sa	sa/s	se	ta	pct
3	Wagner, Hannah	108	31-	318	2.94	102	722	.299	30	0.28	117	.256	0	0.00	1	1	.000
9	Rogers, Stephanie	106	31-	273	2.58	81	647	.297	13	0.12	63	.206	26	0.25	36	291	.876
5	Bell, Amanda	108	31-	226	2.09	141	657	.129	12	0.11	96	.125	9	0.08	16	106	.849
11	Inkrott, Lori	104	31-	203	1.95	106	617	.157	17	0.16	147	.116	44	0.42	61	293	.792
4	Thompson, Tori	98	31-	167	1.70	77	429	.210	6	0.06	44	.136	4	0.04	5	20	.750
6	Christiansen, Kelsey	82	27-	97	1.18	56	263	.156	26	0.32	89	.292	0	0.00	0	0	.000
10	Barkley, Alyssa	43	21-	34	0.79	20	125	.112	19	0.44	60	.317	0	0.00	1	5	.800
8	Simpson, Sarah	21	15-	16	0.76	10	43	.140	5	0.24	7	.714	0	0.00	0	0	.000
7	Anderson, Maddie	109	31-	35	0.32	4	91	.341	669	6.14	1578	.424	66	0.61	29	466	.938
12	Williams, Lauren	16	13-	2	0.12	1	5	.200	0	0.00	3	.000	1	0.06	3	19	.842
1	Bartholomew, Erica	109	31-	11	0.10	8	52	.058	453	4.16	1116	.406	32	0.29	45	388	.884
2	Kirkpatrick, Heather	106	31-	4	0.04	8	60	-.067	25	0.24	240	.104	25	0.24	22	454	.952
14	Yutzy, Kara	107	31-	4	0.04	16	71	-.169	24	0.22	198	.121	45	0.42	43	476	.910
	CEDARVILLE	109	31-	1390	12.75	630	3782	.201	1299	11.92	3758	.346	252	2.31	262	2519	.896
	Opponents	109	31-	1000	9.17	562	3539	.124	934	8.57	3485	.268	109	1.00	151	2094	.928

##	Player	sp	Recept			Dig		Blocking					
			re	ta	pct	dig	dig/s	bs	ba	total	blk/s	be	bhe
3	Wagner, Hannah	108	0	5	1.000	63	0.58	13	70	83	0.77	12	1
9	Rogers, Stephanie	106	1	5	.800	71	0.67	18	62	80	0.75	18	2
5	Bell, Amanda	108	24	376	.936	140	1.30	2	24	26	0.24	5	3
11	Inkrott, Lori	104	23	531	.957	228	2.19	4	25	29	0.28	8	2
4	Thompson, Tori	98	0	4	1.000	23	0.23	10	72	82	0.84	11	2
6	Christiansen, Kelsey	82	0	0	.000	20	0.24	2	22	24	0.29	5	2
10	Barkley, Alyssa	43	3	26	.885	18	0.42	1	11	12	0.28	7	0
8	Simpson, Sarah	21	0	0	.000	1	0.05	3	11	14	0.67	0	1
7	Anderson, Maddie	109	0	4	1.000	192	1.76	0	4	4	0.04	1	9
12	Williams, Lauren	16	1	39	.974	16	1.00	0	0	0	0.00	0	0
1	Bartholomew, Erica	109	0	5	1.000	130	1.19	0	0	0	0.00	1	10
2	Kirkpatrick, Heather	106	24	539	.955	458	4.32	0	0	0	0.00	0	5
14	Yutzy, Kara	107	28	431	.935	353	3.30	0	1	1	0.01	0	4
-	TEAM	-	5	-	-	-	-	-	-	-	-	-	-
CEDARVILLE.....		109	109	1972	.945	1713	15.72	53	302	204.0	1.87	68	41
Opponents.....		109	252	2294	.890	1457	13.37	69	218	178.0	1.63	75	16



Comfort Suites

121 Raydo Circle
Springfield, OH 45506

937-322-0707

- All Suite Rooms
- Hot Deluxe Breakfast

Only 12 miles
from CU!

Proud to support the
Yellow Jackets!!

Mom and Dad's Dairy Bar & Grille
320 N. Main Street Cedarville, OH
(937)766-2046
Offering Game Night Specials



Christian Camp & Retreat Center

740-778-CAMP • www.sciotohills.com

Hightech Automotive

Appointments for sick cars and
unhappy owners;

937.766.9852

105 West Xenia Ave., Cedarville, OH

Trophy Sports Center

- Team Sales
- Awards
- Uniforms
- School Jackets
- Screen Printing



376-2311



(937)433-8268

Industrial & Commercial Roofing
www.CottermanRoofing.com • Dayton & Minster, Ohio


2012 Mount Vernon Nazarene University Volleyball Statistics

Overall record: 21-13 Conf: 11-7 Home: 10-1 Away: 4-8 Neutral: 7-4

		ATTACK							SET				SERVE					
##	Name	GP	MP	MS	K	K/Game	E	TA	Pct	A	A/Game	TA	Pct	SA	SA/Gm	SE	TA	Pct
1	Kelly McQuade	5	3-0		2	0.40	1	7	.143	0	0.00	1	.000	0	0.00	0	1	1.000
2	Lauren Percival	129	34-34		125	0.97	36	367	.243	1218	9.44	3589	.339	44	0.34	21	549	.962
5	Paige Hagans	84	27-16		1	0.01	0	7	.143	14	0.17	38	.368	7	0.08	19	210	.910
6	Kaylee Hewitt	131	34-1		24	0.18	23	157	.006	24	0.18	109	.220	23	0.18	14	439	.968
7	Haley Nofziger	131	34-34		336	2.56	139	984	.200	2	0.02	22	.091	1	0.01	0	6	1.000
8	Gina Porto	131	34-34		376	2.87	95	886	.317	11	0.08	48	.229	24	0.18	55	394	.860
10	Kendra Votaw	131	34-32		419	3.20	142	1143	.242	22	0.17	101	.218	27	0.21	29	502	.942
12	Shayla Pierce	81	29-15		11	0.14	13	51	-.039	24	0.30	65	.369	11	0.14	11	206	.947
13	Kelly Mast	130	34-34		128	0.98	66	359	.173	8	0.06	22	.364	0	0.00	0	0	.000
14	Morgan Pridemore	127	34-2		2	0.02	4	19	-.105	18	0.14	51	.353	30	0.24	34	445	.924
15	Molly Gerber	121	34-0		141	1.17	73	481	.141	41	0.34	133	.308	1	0.01	0	5	1.000
16	Emily Oberschlake	39	15-2		0	0.00	0	4	.000	1	0.03	13	.077	7	0.18	11	115	.904
	MT. VERNON NAZARENE.	131	34-34		1565	11.95	592	4465	.218	1383	10.56	4192	.330	175	1.34	194	2872	.932

		----RECEPT----				---DIG---		-----BLOCKING-----					
##	Name	G	RE	TA	Pct	DIG	Dig/G	BS	BA	Total	B/Game	BE	BHE
1	Kelly McQuade	5	0	0	.000	0	0.00	0	0	0	0.00	0	0
2	Lauren Percival	129	2	3	.333	304	2.36	5	38	43	0.33	2	20
5	Paige Hagans	84	19	266	.929	131	1.56	0	0	0	0.00	0	5
6	Kaylee Hewitt	131	43	921	.953	592	4.52	0	0	0	0.00	0	0
7	Haley Nofziger	131	1	14	.929	78	0.60	14	41	55	0.42	3	2
8	Gina Porto	131	0	7	1.000	55	0.42	33	73	106	0.81	2	1
10	Kendra Votaw	131	20	360	.944	341	2.60	10	27	37	0.28	1	6
12	Shayla Pierce	81	20	172	.884	74	0.91	2	3	5	0.06	0	4
13	Kelly Mast	130	3	16	.812	20	0.15	14	46	60	0.46	1	1
14	Morgan Pridemore	127	35	376	.907	217	1.71	0	0	0	0.00	0	4
15	Molly Gerber	121	25	201	.876	51	0.42	11	20	31	0.26	2	6
16	Emily Oberschlake	39	14	90	.844	73	1.87	0	0	0	0.00	0	1
TEAM		5											
MT. VERNON NAZARENE.		131	187	2427	.923	1936	14.78	89	248	213.0	1.63	11	50

SCREEN PRINTING
OFFSET PRINTING
DESIGN SERVICES
ADVERTISING SPECIALTIES
EMBROIDERY & PATCHES
PLAQUES & TROPHIES
WALNUTS AND MORE
SCREEN Play PRINTING
1450 S. Patton Street
Xenia, Ohio 45385
Fax: 374-0111
374-2646

 **Orthopaedic Institute OF DAYTON**
Main Office - Kettering
3205 Woodman Drive • 937-298-4417
Tipp City Office
25 S. Tippecanoe Drive • 937-669-0909
Best Wishes for a Great Season!

 **LEGACY VILLAGE Retirement Community**
Independent Homes
937.372.8992
Assisted Living
937.372.0359

CU All-Time Volleyball Roster

(thru 10/30/12)

--- A ---

Margee Agley 1989
Libby Short Aker 2005-08
Maddie Anderson 2011-12
Rachel Anderson 2002-04
Becca Argento 2002
Dinah Arthur 1973

--- B ---

Nancy Bailey 1966
Becky Baker 1966
Alyssa Barkley 2012
Erica Bartholomew 2009-12
Linda Bean 1989-90
Bonnie Beikert 1979-82
Amanda Bell 2011-12
Andrea Berry 1986
Kathy Berry 1970
Pat Betts 1968-69
Penny Bodemiller 1982
Grace Bonnema 1964
Leona Bowen 1970
Pat Boyd 1967
Julia Bradley 2003-06
Melinda Bradley 1983-85
Sarah Bradshaw 2011
Pam Branning 1968, 70
Elaine Brown 1974-76
Laurie Bruenino 1976
Lori Bunker 1997-2000
Tracie Burlingame 1989-90
Shawn Bush 1990
Julie Butler 1983-86
Joyce Byers 1971

--- C ---

Terri Cadman 1975
Becky Cagwin 1967
Sue Ellen Cale 1972
Bev Carlson 1964-67
Cindi Carter 1975
Nancy Chnecker 1971
Justine Christiaan 2006-09
Kelsey Christiansen 2010-12
Charlene Clark 1975
Lauren Clark 1972-75
Richelle Clem 2001-04
Connie Clemons 1977-78
Beth Comer 1995-97
Tammy Compton 1981
Lorrie Cooper 1966
Teresa Cooper 1971-72
Judie Cross 1974-77
Roni Crum 1974-76
Louanne Cruz 1986
Lynette Cruz 1989, 91-92
Kristi Culp 1984-86
Jane Cunningham 1969
Marcie Duez Curry 1993-96

--- D ---

Ann Damon 1963-66
Debbie Davis 1971
Becky DeLancey 1975-76
Denise DeMars 1973-76
Karen DeMars 1969-72
Kristine Deshetsy 1991
Denise DeWalt 1989
Michelle Dick 1993
Jennifer Dilling 1990-91
Jennifer Dinelli 1991
Amy Dirr 1990-91
Donna Douglas 1984
Jan DuBois 1965-66

--- E ---

Karen Eccleston 1997
Michaelle Egel 1986-87
Kassi Ernsberger 2010-11
April Eutsey 1987

--- F ---

Debbie Fakan 1979-80
Susan Field 1980
Sandy Finch 1971-74
RaeBelle Fisher 1969
Sandy Fletcher 1988-89
Kari Flunker 2005
Lori Franklin 1979
Chrissie Fretts 1998-2000

--- G ---

Amy Garner 2006-07
Renee Gaston 1982-84
Mia Gerard 1993
Sue Geyser 1963
Lauren Gill 2009-10
Kathy Godinez 2002-03
Beth Goldsmith 1982-84
Debbie Good 1974-75
Pam Goodwin 1993-95
Mary Lynn Grable 1966-68
Wendy Grady 1983
Ruth Grant 1964
Mary Greening 1979-80
Cari Greetham 2005, 08
Jill Griswold 1977-79

--- H ---

Lori Hamilton 1988-89, 91
Maija Hampton 2005-08
Kathi Haney 1981-82
Carol Hanson 1965-66
Sue Harger 1964
Marcy Morton Harper 1979-81
Shelly Harris 1983
Angela Hartman 1990-93
Carrie Hartman 2000-03
Melissa Hartman 1992-95
Sarah Hartman 2007-10
Lana Hass 1992-94
Cindy Hasselbring 1994
Jeri Hastman 1985-88
Dee Hauser 1989-92
Cindy Heinrich 1977
Carol Helmick 1981-84
Debbie Henry 1989-92
Cheryl Heslep 1971-74
Andrea Hilliker 2001
Casey Hinzman 2007-09
Jennifer Hoag 1968
Brenda Hobar 1976-79
Karen Hobar 1980-83
Krista Hoffman 1995
Melissa Holland 2001-02
Pat Holmes 1975-77
Donna Hopkins 1965, 67-68
Wilma Hopkins 1968-69
Laura Huggler 1992-95
Pam Huls 1998-99
Shellee Hunt 1975
Kylee Husak 2007-10
Julie Hutchins 1977
Salli Hyde 1980-81

--- I ---

Michelle Ince 2003
Lori Inkrott 2012
Patty Irwin 1969-70

--- J ---

Sarah Jackson 1993-96
Jill Jacobs 1987-88
Keri Jacobs 1992
Maryalyce Jeremiah 1963-64
Amanda Johns 1996-97
Sue Johns 1963-64
Joyce Johnson 1964-65
Kathy Johnson 1964
Kelsey Jones 2002-05

--- K ---

Donna Kahler 1968, 70
Elaine Kalnbach 1970-72
Janice Kane 1963
Pat Kaster 1963
Barbara Kensil 1965, 67-68
Heather Kirkpatrick 2009-12
Jennifer Knecht 1978-79
Eileen Knott 1966-67
Shelley Knowles 1974

--- L ---

Nancy Leapline 1967
Suzanne Lehman 1995-98
Michelle Lelah 1985
Val Linderman 1981-82
Anne Lohrenz 2003-06

--- M ---

Lauren Mable 2002-05
Katherine MacKenzie 2007-09
Amy Martin 1998-2001
Jan Martin 1970-72

Tammy Mascari 1985-88
Tina Mascari 1993
April May 1974
Rachel Mayo 1974
Janet McClish 1963
Rita McDowell 1969
Julie Barkhaus McIntyre 1996-98
Karen Meadows 1983-84
Susan Meier 1981
Julie Mercer 1995
Helen Meshew 1963
Cheryl Meyer 1998-2001
Lori Miesse 1985
Aimee Miller 1991-92
Cheryl Miller 1992-95
Elizabeth Miller 1991-93
Katie Moon 2007
Emilie Lynch Morrison 2008-11
Darcy Morton 1978-81
Michelle Moser 1977
Kim Murray 1975

--- N ---

Michelle Nakano 1987-89
Rachel Norton 1975-78

--- O ---

Judy O'Connor 1985
Sarah Oleszczuk 1999-2001
Julie Opperman 1995-98
Sally Orihood 1971-74
Linda Osborn 1971-73
Nancy Ozinga 1984-85

--- P ---

Sue Palmer 1979
Micky Park 1975-76
Melissa Parmelee 2005-06
Flo Parshley 1967
Erica Paugh 2002-05
Landa Penquite 1976-78
Bev Pestel 1969-71
Lachelle Peters 1999-2000
Marsha Peterson 1981-82
Teri Cater Peterson 1982-84
Lisa Petty 1980
Aaryn Phillips 2002-03
Robyn Pitman 1998
Meredith Pollard 1993-94
Terri Potter 1978
JoEllyn Priola 1975-76

--- Q ---

Peggy Quigley 1980-83

--- R ---

Robin Raabe 1977
Suzie Rader 1965-67
Karen Rau 1966-67
Alison Reemtsma 1998-99
Betsy Reich 1991
Julie Rhoads 2000-01
Karla Richardson 1989
Susie Riegler 1977-80
Laura Roby 1973
Lori Rogers 1986-88
Ruth Rogers 1965
Stephanie Rogers 2010-12
Becky Ross 1963
Carol Rotsko 1973
Lori Royal 1991-94
Casey Ruffin 1996
Colleen Ryan 1966

--- S ---

Paula Sadler 1964, 66
Dorene Sands 1975-77
Christine Scheffel 1995-96
Heather Scheffel 1994-97
Sandy Holwerda Schlappi 1971-74
Casey Schmidt 1999-2000
Joan Schmidt 1979-80
Kari Schmidt 1978
Jewel Schroder 1981
Mary Ellen Schut 1965
Kathy Scott 1972-73
Pat Scovell 1963
Kim Seefried 1977
Rachel Sellers 1990
Emily Berger Shade 2006-09
Julianne Sharp 1991, 93
Sarah Sheers 2006-08
Elma Shugg 1965-66
Nikki Siefert 2009-10

Aubrey Siemon 2011
Renee Silverthorn 1968
Sarah Simpson 2012
Jennifer Sloan 1992
Janae Smart 1985-88
Becky Smith 1970
Heather Smith 1998
Nancy Smith 1963
Nancy Snook 1976-78
Kathy Spencer 1965-68
Melissa Sprankle 1994-96
Pam Squires 1987-88
Judy Stamatias 1967-69
Liz Sweeney 2006-09

--- T ---

Shawn Taylor 1976-77
Jennifer Tetrick 1999-2000
Kelly Theiss 2005-06
Billie Thomas 1968-70
Jody Thompson 1996
Paula Thompson 2001-03
Rachel Thompson 2004-06
Tori Thompson 2012
Rachel Tilton 1996-97
Brenda Tompkins 1969-72
Christine Tompkins 1971
Connie Tompkins 1968
Gail Tompkins 1964-67
Valerie Totman 1974-77
Joy Trefzger 1969-70
Kathy Turner 1976-79

--- U ---

Jenny Ulmer 1982

--- V ---

Heather van der Aa 1998-2001
Kristi VanDyke 1990
Pat Versluis 1964

--- W ---

Hannah Wagner 2011-12
Lisa Wagner 1980
Peg Wagner 1973
Lois Walker 1965-66
Connie Ward 1964
Lynda Wessel 1968
Sharon Westcott 1963-64
Laura Whaley 1987
Val Whisler 1981
Linda White 1970-72
Angie Wilcox 1983-86
Courtney Williams 1999-2002
Lauren Williams 2010-12
Pam Williams 1972
Becky Wilson 1984-85
Julie Wilson 1986-89
Linda Wilson 1965
Charissa Winburg 2001-02
Twila Wing 1965
Dee Wiseman 1981-82
Pat Wissinger 1966-69
Lynn Witt 1986
Susan Wittenbach 1980
Miranda Woller 1996-97
Lisa Weirich Wood 1994-97
Tiffany Wyant 2004-05

--- Y ---

Stephanie Yankovich 1992
Sherry Yates 1982
Emily Young 1999-2000
Kara Yutzy 2009-12

--- Z ---

Amy Zehr 1990-92
Sarah Zeltman 2004-07
Leah Ziegenfuss 1997-2000
Connie Ziegler 1987-88

Cedarville Career Leaders

(thru 10/30/12)

MATCHES PLAYED

203	Julia Bradley, 2003-06
202	Anne Lohrenz, 2003-06
193	Sarah Zeltman, 2004-07
184	Melissa Hartman, 1992-95
183	Libby Short Aker, 2005-08
182	Angela Hartman, 1990-93
182	Marcie Duez Curry, 1993-96
181	Suzanne Lehman, 1995-98
181	Julie Opperman, 1995-98
181	Richelle Clem, 2001-04

SETS PLAYED

695	Julia Bradley, 2003-06
688	Anne Lohrenz, 2003-06
663	Sarah Zeltman, 2004-07
649	Libby Short Aker, 2005-08
618	Richelle Clem, 2001-04
616	Majia Hampton, 2005-08
608	Emily Berger Shade, 2006-09
604	Julie Opperman, 1995-98
602	Kelsey Jones, 2002-05
596	Lauren Mable, 2002-05

KILLS

2,851	Sarah Zeltman, 2004-07
2,813	Julia Bradley, 2003-06
2,390	Heather van der Aa, 1998-2001
1,898	Julie Opperman, 1995-98
1,515	Amy Zehr, 1990-92
1,502	Sarah Jackson, 1993-96
1,486	Amy Martin, 1998-2000
1,478	Cheryl Miller, 1992-95
1,475	Kylee Husak, 2007-10
1,456	Emily Shade, 2006-09

ASSISTS

6,662	Kelsey Jones, 2002-05
4,748	Lori Bunker, 1997-2000
4,004	Angela Hartman, 1990-93
3,911	Erica Bartholomew, 2009-12
2,990	Carrie Hartman, 2000-03
2,367	Rachel Thompson, 2004-06
2,285	Julie Barkhaus McIntyre, 1996-98
1,854	Sarah Sheers, 2006-08
1,504	Michelle Nakano, 1987-89
1,444	Katie Moon, 2007

BLOCK SOLOS

339	Sarah Zeltman, 2004-07
260	Julia Bradley, 2003-06
220	Cheryl Miller, 1992-95
216	Kylee Husak, 2007-10
198	Julie Opperman, 1995-98
196	Heather van der Aa, 1998-2001
196	Amy Zehr, 1990-92
126	Amy Martin, 1998-2001
109	Stephanie Rogers, 2010-12
107	Tammy Mascari, 1985-88

BLOCK ASSISTS

445	Julia Bradley, 2003-06
390	Heather van der Aa, 1998-2001
383	Sarah Zeltman, 2004-07
368	Julie Opperman, 1995-98
304	Amy Martin, 1998-2001
300	Kylee Husak, 2007-10
268	Anne Lohrenz, 2003-06
261	Cheryl Miller, 1992-95
218	Stephanie Rogers, 2010-12
212	Kelsey Jones, 2002-05

TOTAL BLOCKS

722	Sarah Zeltman, 2004-07
705	Julia Bradley, 2003-06
586	Heather van der Aa, 1998-2001
566	Julie Opperman, 1995-98
516	Kylee Husak, 2007-10
481	Cheryl Miller, 1992-95
430	Amy Martin, 1998-2001
387	Amy Zehr, 1990-92
327	Stephanie Rogers, 2010-12
302	Anne Lohrenz, 2003-06

DIGS

2,882	Libby Short Aker, 2005-08
2,779	Lauren Mable, 2002-05
2,429	Melissa Hartman, 1992-95
2,144	Majia Hampton, 2005-08
2,069	Heather Kirkpatrick, 2009-12
1,849	Suzanne Lehman, 1995-98
1,844	Kelsey Jones, 2002-05
1,807	Richelle Clem, 2001-04
1,779	Lori Bunker, 1997-2000
1,612	Angela Hartman, 1990-93

SERVICE ACES

216	Sarah Zeltman, 2004-07
215	Lauren Mable, 2002-05
182	Angela Hartman, 1990-93
169	Richelle Clem, 2001-04
156	Maddie Anderson, 2011-12
142	Kelsey Jones, 2002-05
140	Carrie Hartman, 2000-03
139	Paula Thompson, 2001-03
138	Libby Aker Short, 2005-08
132	Amy Zehr, 1990-92

SERVE PERCENTAGE

(500 serves; serves-errors)	
.9872	Suzanne Lehman (2112-27), 1995-98
.9869	Lori Bunker (2524-33), 1997-2000
.9798	Lisa Weirich Wood (1979-40), 1994-97
.9710	Katherine MacKenzie (1104-32), 2007-09
.9692	Courtney Williams (1917-59), 1999-2002
.9674	Pam Huls (983-32), 1998-99
.9635	Sarah Jackson (1479-54), 1993-96
.9631	Cheryl Meyer (1979-73), 1998-2001
.9622	Sarah Zeltman (2623-99), 2004-07
.9596	Heather Kirkpatrick (1807-73), 2009-12

PASS PERCENTAGE

(500 attempts; attempts-errors)	
.941	Heather Kirkpatrick (3698-219), 2009-12
.941	Melissa Hartman (2544-151), 1992-95
.940	Suzanne Lehman (3002-181), 1995-98
.940	Becky Wilson (806-48), 1984-85
.939	Marcie Duez Curry (2016-123), 1993-96
.934	Libby Short Aker (4587-305), 2005-08
.933	Majia Hampton (2612-174), 2005-08
.930	Casey Hinzman (1979-138), 2007-09
.929	Kara Yutzky (1428-101), 2009-12
.928	Pam Huls (804-58), 1998-99

Your Ad Here?

Promote your business!

Contact

Jeff Bolender

937-766-4136

for more information

Trent E. Licklider, CPA

- Income Tax Preparation
- Payroll Service
- Free Consultations
- Personal, Quality Attention
- Open Year-Round

937-372-7500

25 S. Detroit St., Xenia, OH 45385
cpa@licklidercpa.com

All-Time Series Records

1035 Wins — 664 Losses — .609 Pct. — 50 Years (thru 10/30/12)

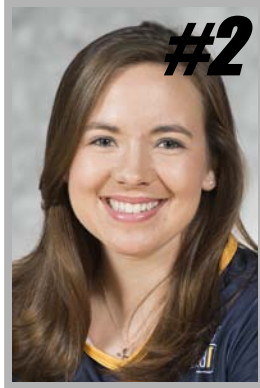
	W	L		W	L
Akron	0	2	Maine-Machias	2	0
Albertson	0	1	Malone	29	18
Alderson-Broadus	3	1	Manchester	4	1
Alliant International	1	0	Marian	2	1
Alma	1	0	Marietta	1	1
Anderson	9	4	Marshall	1	1
Antioch	1	2	Mars Hill	1	0
Aquinas	6	0	Maryville	2	0
Arkansas Tech	0	1	Master's	1	2
Asbury	3	0	McKendree	0	2
Ashland	2	6	Miami OH	3	5
Baldwin-Wallace	4	0	Michigan-Dearborn	3	4
Barat	1	0	Michigan Tech	2	0
Bellarmine	0	1	MidAmerica Nazarene	1	0
Benedictine KS	1	0	Midway	2	0
Berea	1	0	Milligan	1	0
Berry	1	0	Morehead State	0	2
Bethany	1	1	Morris Harvey	1	0
Bethel IN	9	5	Mount St. Joseph	2	34
Bluffton	8	25	Mount Union	7	0
Bowling Green	0	6	Mt. Vernon Nazarene	25	40
Brescia	1	0	Mountain State	3	0
California Baptist	0	2	Muskingum	7	6
Campbellsville	2	2	Northern Kentucky	0	1
Capital	9	12	Northwest WA	1	0
Carlow	5	0	Northwestern IA	1	0
Carthage	0	1	Northwestern MN	2	0
Case Western Reserve	3	0	Northwestern Ohio	2	1
Central State	62	11	Northwood FL	1	0
Centre	1	0	Notre Dame OH	15	1
Charleston	3	0	Oakland City	5	1
Chicago State	0	1	Oberlin	3	0
Chowan	1	0	Ohio	3	7
Christian Heritage	1	4	Ohio Dominican	49	19
Cincinnati	1	13	Ohio Northern	7	10
Cincinnati Christian	14	0	Ohio State	0	8
Clearwater Christian	2	0	Ohio Valley	5	0
Cleveland State	1	2	Ohio Wesleyan	9	4
Colorado Christian	1	0	Olivet	4	0
Columbia	0	1	Olivet Nazarene	4	4
Concord	2	0	Otterbein	15	5
Concordia MI	8	0	Palm Beach Atlantic	2	4
Cornerstone	8	3	Penn State-Behrend	1	0
Cumberland TN	2	0	Pensacola Christian	1	0
Cumberland KY	2	0	Pikeville	2	0
Daemen	4	2	Pittsburgh-Bradford	1	0
Dallas	1	0	Point Park	7	1
Dallas Baptist	1	0	Quincy	0	1
Davenport	3	0	Rio Grande	41	14
Davis & Elkins	2	0	Robert Morris IL	2	0
Dayton	3	25	Roberts Wesleyan	7	0
Defiance	24	13	Rockhurst	0	1
Denison	11	3	Saint Francis IL	0	2
DePauw	3	0	Saint Francis IN	10	4
Doane	0	1	Saint Joseph's IN	1	5
Earlham	13	2	Saint Mary NE	0	2
Eastern Illinois	0	1	Saint Vincent	8	0
Eckerd	1	0	Saint Xavier	0	5
Edinboro	1	0	Salem-Teikyo	1	0
Faulkner	1	0	Savannah Art & Design	0	1
Findlay	15	19	Seton Hill	7	0
Flagler	1	1	Shawnee State	38	4
Florissant Valley	0	1	Siena Heights	3	1
Franklin	1	5	Slippery Rock	0	1
Fresno Pacific	0	1	Southern Indiana	0	1
Geneva	7	1	SW Assemblies of God	17	14
Georgetown	1	4	Spring Arbor	17	0
Glenville State	3	0	Sue Bennett	1	0
Goshen	1	0	Taylor	8	32
Grace	24	14	Taylor-Fort Wayne	4	0
Hanover	5	4	Tennessee Temple	2	0
Harding	0	1	Thomas More	1	5
Hastings	0	1	Tiffin	34	10
Heidelberg	9	4	Toledo	2	0
Henderson State	0	1	Trevecca Nazarene	1	1
Hillsdale	1	0	Tri-State	0	2
Hiram	2	0	Trinity Christian	3	0
Hope International	2	0	Trinity International	7	1
Houghton	5	1	Union TN	1	2
Huntington	6	4	Urbana	60	4
Illinois-Springfield	3	0	Ursuline	8	0
Illinois Tech	0	2	Virginia Union	1	0
Indiana PA	2	0	Walsh	17	35
Indiana East	1	4	Warner Southern	3	0
Indiana-Southeast	1	3	Webber International	2	0
Indiana Tech	2	4	West Georgia	0	1
Indiana Wesleyan	19	18	West Liberty	3	0
Indianapolis	9	4	West Virginia Tech	1	0
Iowa Wesleyan	0	1	West Virginia Wesleyan	1	1
IUPUI-Indianapolis	4	1	Western	1	0
John Carroll	0	3	Western Baptist	1	0
Judson	2	1	Wheeling Jesuit	0	2
Kent State	1	0	Wilberforce	3	0
Kentucky State	1	0	Wilmington	40	18
Kentucky Wesleyan	2	0	Windsor ONT	1	0
Kenyon	12	3	Wittenberg	28	22
King	1	0	Wooster	8	6
Lake Erie	5	2	Wright State	4	5
Lee	0	3	Xavier	7	5
Le Moyne	1	0	Youngstown State	0	1
Lindenwood	1	1			
Madonna	1	3			

2012 Opponents in Bold

Meet the 2012 Lady Jackets



Erica Bartholomew
5-5 • Senior
S • Coloma, MI



Heather Kirkpatrick
5-7 • Senior
L/DS • Huntsville, AL



Hannah Wagner
6-2 • Sophomore
OH • Claremont, CA



Tori Thompson
6-1 • Freshman
MH • Columbus, OH



Amanda Bell
5-10 • Sophomore
OH • Ankeney, IA



Kelsey Christiansen
6-0 • Junior
MH/OH • Fishers, IN



Maddie Anderson
5-9 • Sophomore
S • Carmel, IN



Sarah Simpson
5-10 • Freshman
OH/MH • Wooster, OH



Stephanie Rogers
5-11 • Junior
MH • Carmel, IN



Alyssa Barkley
5-11 • Freshman
MH/OH • Encinitas, CA



Lori Inkrott
5-10 • Freshman
OH • Wooster, OH



Lauren Williams
5-6 • Junior
DS • Cleveland, OH



Kara Yutzy
5-8 • Senior
DS • West Jefferson, OH

BUCKEYE
CHARTERS

"Official Charter Company of the Cedarville Yellow Jackets"

937-879-3000

8250 Expansion Way • Dayton, OH 45424

COMFORT SUITES

121 Raydo Circle • Springfield, OH 45506
937-322-0707

- All Suite Rooms
- Hot Deluxe Breakfast

Only 12 miles from CU!

Proud to support the Yellow Jackets!!

Gourmet Gift Baskets And Gift Shop



Helping you share the special moments with the people in your life

20 N. Fountain Avenue in
downtown Springfield
937-324-9774

www.thebestgourmetgiftbaskets.com

Local delivery and nationwide shipping



yellowjackets.cedarville.edu

