

---

Volleyball Programs

Volleyball

---

11-2-2015

## Cedarville vs. Indiana-East

Cedarville University

Follow this and additional works at: [https://digitalcommons.cedarville.edu/volleyball\\_programs](https://digitalcommons.cedarville.edu/volleyball_programs)



Part of the [Higher Education Commons](#), and the [Sports Studies Commons](#)

---

### Recommended Citation

Cedarville University, "Cedarville vs. Indiana-East" (2015). *Volleyball Programs*. 58.  
[https://digitalcommons.cedarville.edu/volleyball\\_programs/58](https://digitalcommons.cedarville.edu/volleyball_programs/58)

This Program is brought to you for free and open access by DigitalCommons@Cedarville, a service of the Centennial Library. It has been accepted for inclusion in Volleyball Programs by an authorized administrator of DigitalCommons@Cedarville. For more information, please contact [digitalcommons@cedarville.edu](mailto:digitalcommons@cedarville.edu).

# MATCH DAY



**Cedarville University**  
**vs.**  
**Indiana University East**  
**Tuesday, November 3, 2015**  
**7:00 PM**



# Lady Jacket Volleyball Blog

November 3, 2015

Something I have been pondering lately is the way we mark our time. It is a little weird to explain but we mark our time by what we deem important. For me, that means my time is in increments of seasons - volleyball seasons to be specific. When I remember an event, I remember it being in a specific season in my career. Like, when I think about the time that I tore my abdomen I consequently refer to the fall season of my sophomore year. What this says about me is that volleyball is one of my biggest commitments in my life.

My next thought about the issue of time compartmentalization was a little disturbing: why don't I mark my time with points in my walk with Christ? This may seem abstract, but the more I think about it the more I can piece it together. Maybe I was in a volleyball season, but what was the Lord teaching or showing me at that point in time? What was I struggling with that He used to mold me into who I am today? How was I growing? What did I find in scripture that I had never seen before? These are the things I want to be thinking of when I want to date an event in my life. I don't want to think about what I was doing, I want to think about what God was doing. So, even if I am in a volleyball season, I don't want it to be about kills, errors, and percentages. I want to reflect on the conversations, prayers, and hardships that we endured to spread His love through a game we love. Now when I think about the tear in my abdomen I don't think about it simply stopping my play. I think of the tear as a way my Father was showing me that I am more than just a volleyball player and my intrinsic value lies in Him and Him alone. I have to say, I like that perspective so much more.

Connecting these thoughts to what is taking place in our season can be summed up in one word: injuries. Abby Shelton just came off of an ankle sprain this past weekend that took her off the court for over a week. Krissy Pratt suffered a serious concussion last Tuesday that prevented her from even travelling with us this past weekend. Our lineup

has been changed over and over to accommodate for the injuries we suffer, and we can't help but ask God what He's doing. As hard as it is to see His plan amidst the difficulties we face now, I can only hope that we would mark this time by what He will teach us throughout the rest of the season. Despite adversity, however, we won two five-set thrillers against Trevecca and KWC. One of our goals as a team this season is to not lose a fifth set, and we put ourselves to the test twice in less than 24 hours. I'm proud of my team because we never once showed a lack of confidence in our ability to win. We were down in the fifth sets both times and came back to win, which is extremely hard to do. I can only attribute these victories to the Lord allowing us to shine in crucial moments, which He often does when we have nothing left. Isaiah 40:29 says, "He gives power to the weak and strength to the powerless." That verse is being made more real to me each day as the Lord continues to give me strength. I see this in my teammates as well and am so thankful that we serve a God who sympathizes with our weaknesses and helps us to overcome them.

Please be praying for the injuries on our team as well as back to back games this week - Tuesday home vs IU East and Wednesday at Ursuline. Also, a huge thanks to the parents that travel to places like Kentucky and Tennessee just to watch us play...you are such an incredible blessing to all of us! We love you all, have a wonderful week!

Rachel Krikke is a junior at Cedarville University from North Royalton, Ohio and is a Dean's List student majoring in business.



@rachel\_krikke

Read the blogs from other Yellow Jacket student-athletes at 2015-16 Blog Central. Go to:

[yellowjackets.cedarville.edu](http://yellowjackets.cedarville.edu)

## SUPPORTING YOUR TEAM ON AND OFF THE FIELD



Pictured from left to right:  
Ryan Chamberlin, AT; Shila Obee, AT;  
Justin Stanfill, AT; Aaron Bair, AT, CSCS;  
Michael Willets, MS, AT

### Your Ohio Valley Team of Professionals:

**Medical Director: Ian Thompson, M.D., M.S., F.A.A.O.S.**

**Director of Sports Medicine: Michael Willets, MS, AT**

Aaron Bair, AT, CSCS; Ryan Chamberlin, AT;

Shila Obee, AT; Justin Stanfill, AT;

Noshir Deboo, MD; John Dobson, MD;

David Galluch, MD; Tarsem Garg, MD;

Lance Tigyer, DO; Kevin Zartman, MD; Philip Cain, DPM;

Donald LeMelle, DPM; David Anon PT, DPT, AT;

Megan Chojnacki, PT, MPT; Wade Rice, PT, DPT, CSCS;

Terrie Wilborn-Halverson, PT, DPT

## OHIO VALLEY sports medicine

- Athletic Training & Injury Prevention
- Certified Concussion Management & Testing
  - Sports Performance Enhancement
    - Walk-In Clinic
    - Sports Injury Helpline
- Pupil Activity Program (PAP) Certification Training
  - CPR Training

**Sports Injury Helpline**

**937-521-4960**

Call our Sports Injury Helpline for access to a sports medicine professional



# 2015 Schedule/Results



**(14-13 Overall, 8-1 G-MAC)**

& Northern Michigan Open; Marquette, MI  
+ Findlay Invitational; Findlay, OH  
% Midwest Region Crossover; Aurora, IL

Sept. 4	vs. Fort Hays State &	Marquette, MI	L 1-3
Sept. 4	at Northern Michigan &	Marquette, MI	L 1-3
Sept. 5	vs. Lake Superior State &	Marquette, MI	W 3-0
Sept. 5	vs. Michigan Tech &	Marquette, MI	L 1-3
<b>Sept. 8</b>	<b>INDIANAPOLIS</b>	<b>Cedarville, OH</b>	<b>W 3-2</b>
Sept. 11	vs. Pitt-Johnstown +	Findlay, OH	L 1-3
Sept. 11	vs. Mercyhurst +	Findlay, OH	L 0-3
Sept. 12	vs. Hillsdale +	Findlay, OH	L 1-3
Sept. 12	at Findlay +	Findlay, OH	L 0-3
Sept. 15	at Malone	Canton, OH	L 1-3
<b>Sept. 18</b>	<b>CHARLESTON</b>	<b>Cedarville, OH</b>	<b>W 3-0</b>
<b>Sept. 22</b>	<b>URBANA</b>	<b>Cedarville, OH</b>	<b>W 3-0</b>
<b>Sept. 25</b>	<b>ALDERSON BROADDUS*</b>	<b>Cedarville, OH</b>	<b>W 3-1</b>
<b>Sept. 26</b>	<b>DAVIS &amp; ELKINS*</b>	<b>Cedarville, OH</b>	<b>W 3-0</b>
<b>Sept. 29</b>	<b>SOUTHERN INDIANA</b>	<b>Cedarville, OH</b>	<b>W 3-1</b>
<b>Oct. 2</b>	<b>KENTUCKY WESLEYAN*</b>	<b>Cedarville, OH</b>	<b>W 3-0</b>
<b>Oct. 3</b>	<b>TREVECCA*</b>	<b>Cedarville, OH</b>	<b>W 3-1</b>
<b>Oct. 6</b>	<b>URSULINE*</b>	<b>Cedarville, OH</b>	<b>W 3-0</b>
Oct. 13	at Central State	Wilberforce, OH	W 3-0
Oct. 16	vs. Missouri S&T%	Aurora, IL	L 0-3
Oct. 16	vs. Rockhurst%	Aurora, IL	L 1-3
Oct. 17	vs. Drury%	Aurora, IL	L 0-3
Oct. 23	at Salem International*	Salem, WV	W 3-0
Oct. 24	at Ohio Valley*	Vienna, WV	L 1-3
Oct. 27	at Bellarmine	Louisville, KY	L 1-3
Oct. 30	at Trevecca*	Nashville, TN	W 3-2
Oct. 31	at Kentucky Wesleyan*	Owensboro, KY	W 3-2
<b>Nov. 3</b>	<b>INDIANA EAST</b>	<b>Cedarville, OH</b>	<b>7 PM</b>
Nov. 4	at Ursuline*	Pepper Pike, OH	7 PM
<b>Nov. 10</b>	<b>KENTUCKY STATE</b>	<b>Cedarville, OH</b>	<b>7:30 PM</b>
Nov. 14	vs. Charletson	Wheeling, WV	3 PM
Nov. 14	at Wheeling Jesuit	Wheeling, WV	5 PM
Nov. 20	G-MAC Tournament	Mason, OH	TBA
Nov. 21	G-MAC Tournament	Mason, OH	TBA

\* Great Midwest Athletic Conference

All Starting Times Eastern

Home matches in **BOLD ALL CAPS**

All home matches live video streamed on Stretch Internet



# PARADISE

## Kettle Korn

## Honorary Assistant Coach



**Ellen Hanson** serves as the Administrative Assistant to the Director for Global Outreach at Cedarville University. In this role she serves as the primary contact person in Global Outreach for all of the team leaders for the various mission trips sponsored by CU throughout the year. She helps in areas of fundraising, assisting students, coordinating with UMS on vaccinations, and helping the leaders with all of the information the need for the trip.

# Tonight's Match

The Cedarville University women's volleyball team hosts the Indiana University East Red Wolves tonight in a non-conference contest in the Callan Athletic Center.

Cedarville, under the direction of eighth-year Head Coach Doug Walters (171-119), enters tonight's encounter with a 14-13 record (8-1 G-MAC) and an unblemished mark (9-0) at home during the 2015 campaign. CU posted road five-set victories over league opponents Trevecca and Kentucky Wesleyan this past weekend to secure the #1 seed in the G-MAC Blue Division.

Indiana East, NAIA members of the Kentucky Intercollegiate Athletic Conference (KIAC), is 23-13 this season and has won five straight matches. The Red Wolves most recent competition includes 3-0 KIAC sweeps on Saturday over Carlow and Cincinnati Christian in Cincinnati.

Four juniors are pacing the Lady Jackets in the 2015 season. Outside hitter Abby Shelton leads the offensive attack with 326 kills and 3.84 kills per set. Rachel Krikke, a 6-1 middle hitter and the current G-MAC Volleyball Athlete of the Week, tops the squad with a .361 attack percentage and 79 blocks.



Abby Shelton

Libero Angela Becker paces the back row with 388 digs while setter Kristin Cardwell has handed out 795 assists.

Head Coach Abigail Niekamp is in her third season (66-42) at Indiana East after previously serving as an assistant with the Red Wolves.

Mallory Livingston, a 5-9 senior outside hitter, tops the Red Wolves attack with 495 kills and 3.78 kills per set. Rookie setter Abbey Ketchem directs the offense while posting 1,013 assists.



Mallory Livingston

IU East owns a 4-2 lead in the all-time series with the Lady Jackets. The teams last met on Nov. 5, 2013 - a 25-20, 25-19, 25-12 CU win over the Red Wolves in Cedarville, Ohio.

## Last Time on the Court - 10/31/15

OWENSBORO, Ky. - The Lady Jackets ended a lengthy road trip by outlasting Kentucky Wesleyan for a G-MAC victory.

Cedarville needed to win the last two sets to claim the match, 22-25, 25-12, 22-25, 25-19, 15-13.

Rachel Krikke hammered 15 kills and turned aside five blocks for the Lady Jackets, 14-13 overall and 8-1 G-MAC. Abby Shelton added 13 kills and 13 digs.

After forcing the fifth set, the visitors had to erase a couple of deficit. KWC built leads of 10-7 and 12-10 before Cedarville rallied.

Alyssa Barkley buried eight kills while Taylor Wilkerson totaled seven kills and four blocks.

Kristin Cardwell produced 37 assists, 13 digs, and seven kills. Angela Becker had 13 digs.

### Numbers Game:

- Krikke registered a .361 attack percentage (15-2-36).
- Barkley served up four aces. She had three for her career entering the match.
- CU attacked at a .279 clip in the final two sets.
- As a team, the Jackets accumulated 42 block assists at Trevecca and Kentucky Wesleyan.
- Cedarville has won its last five five-set matches dating back to last season.
- The Jackets lead the all-time series, 8-2.

## Head Coach Doug Walters



Doug Walters has been the head volleyball coach at Cedarville University since 2008. He is the sixth head coach in the program's history.

The Lady Jackets have posted 157 victories during Walters' seven-year tenure. The list of honors includes the 2008 NCCAA championship as well as three consecutive Great Midwest Athletic Conference crowns in 2012, 2013, and 2014.

During the school's first active season in NCAA Division II in 2012, his squad rolled to a 32-6 overall mark and was a perfect 8-0 in the G-MAC. Cedarville went on to win the inaugural G-MAC Tournament and Walters was ultimately voted the league's Coach of the Year.

The Jackets, who finished 23-14 overall in 2013, repeated the feat after sharing the league's best regular season record at 12-2. They went on the road to claim their second straight G-MAC Tournament trophy.

Then, in 2014, CU made it a three-peat after rolling through the league schedule with a 10-1 regular season mark. The Jackets hosted the G-MAC Tournament as the #1 seed and locked down their third straight title to finish 20-13.

Walters' first season with the Lady Jackets in 2008 was a memorable one as he guided the program to its third National Christian College Athletic Association title in four years. He was tabbed the NCCAA National Coach of the Year.

Cedarville finished with a 27-12 record overall that season and tied for fourth place out of 15 teams in the American Midwest Conference with a 10-4 mark. The Lady Jackets qualified for the AMC Tournament and advanced to the semifinals.

Despite going 15-23 overall in 2009, the Lady Jackets were the #2 seed in the AMC Tournament after going 8-4 in the league. The Jackets were 18-20 and 6-4 AMC in 2010 while advancing to the semifinals of the conference tournament.

Cedarville finished with a 22-18 mark in 2011 during the school's NCAA provisional year and was the No. 1 seed in the Ohio Independent Championship Tournament.

Walters came to Cedarville after assembling a 128-73 record in nine years of high school coaching in southern Ohio. He spent his last two seasons at the prep level at Milford High School, a Division I program near Cincinnati.

Walters previously spent seven years building Eastern High School in Sardinia into one of the top Division III programs in Ohio. The Warriors, who were ranked in the state's Top 10 in three different seasons, won four conference titles, two sectional championships, and were the district runner-up once. He was a four-time conference Coach of the Year and saw eight players continue their careers at the collegiate level.

Walters was founder and former director of the Greater Miami Volleyball Club. The GMVC was started in 2003, was a Junior Olympic organization, and was recognized as one of the top regional clubs in the Cincinnati area.

Walters continues to be involved at the club level. He is a National Team Coach for the Elevation Volleyball Club based out of Mason, Ohio.

Additionally, Walters is the volleyball chair of the Great Midwest Athletic Conference. He is also the chair of the NCAA Division II Women's Volleyball Midwest Regional Advisory Committee and serves on the Division II Women's Volleyball National Committee.

Walters is a 1997 graduate of Northern Kentucky University and he earned his master's degree from the University of Dayton in 2003. Doug and his wife, Angela, reside in Morrow, Ohio with their daughter Caitlyn, 13.

## Lady Jacket Profiles



**Abby Shelton**

**5-10 • Junior • Outside Hitter**  
**Sparta, GA**  
**Chaparral High School**

# #12

Abby Shelton is in her third campaign with the Lady Jacket volleyball team....will serve as one of three captains this fall.....appeared in all 33 matches and 116 of 122 sets during the 2014 season.....registered a third-best 273 kills, 2.35 kills per set, a .232 attack percentage, a .927 serve reception mark and 36 service aces.....matched career-high of 19 kills in a five-set loss at Palm Beach Atlantic.....posted a .611 attack percentage (12-1-18) in a non-conference three-set sweep at Urbana.....registered double figures in kills in 13 other contests including 17 versus Shawnee State.....added 150 digs and 39 total blocks.....tied career-high of 15 digs in season-opening five-set loss to Hillsdale at the Southern Indiana Invitational.....handled 20 serves without an error in an important Great Midwest Athletic Conference (G-MAC) sweep of visiting Trevecca Nazarene.....ranks second all-time at CU with a .947 passing percentage (775 attempts/41 errors).....earned National Christian College Athletic Association Honorable Mention.....member of G-MAC Academic Team.

**2013** - Appeared in 30 matches and 108 sets.....led team with a .964 serve receive percentage - the highest single-season mark in CU volleyball history.....handled 25 serves without an error in the second match of 2013 versus Indiana PA at the Ferris State Invitational.....ranked second with 2.56 kills per set and third with 276 kills.....registered a fourth-best 35 service aces.....recorded a season-high 19 kills in a 3-1 Great Midwest Athletic Conference (G-MAC) win over visiting Ursuline.....posted 17 kills in an important five-set victory at league foe Alderson Broaddus.....connected for double figures in kills in 10 matches during the campaign.....tallied a season-high 15 digs in an early-season win over Columbus State at the Saint Leo Classic.....earned G-MAC honorable mention.

**High School** - Three-year letter winner in volleyball at Chaparral High School....helped prep squad to capture two Colorado Class 5A State titles (2010 and 2011).....team finished the 2011 season ranked #3 in the nation by MaxPreps.....Colorado All-State First Team honors as a senior.....two-time all-region performer.....three-time All-Continental League First Team selection.....club experience with the Colorado Volleyball Association.....two-time Academic All-State honoree.....National Honor Society student.

**Personal** - Sport management major at Cedarville University.....born 6/2/95 in Ft. Collins, CO.....daughter of Doug and Stephannie Shelton.....older brother, Trey, was a four-year baseball player at Manhattan Christian.

## FOLLOW THE YELLOW JACKETS

Keep up with Lady Jacket volleyball on the Internet by logging onto the Cedarville University sports information homepage. The address is [yellowjackets.cedarville.edu](http://yellowjackets.cedarville.edu) and the site includes the schedule, roster, game statistics, cumulative stats, game recaps and photos, video highlights, interviews with coaches and players plus other special video features.



Fans can follow Cedarville University Athletics on social media. Become a fan on Facebook, Instagram, Twitter or YouTube. Sign up using the links on the sports information website. Look for the graphics in the bottom right corner of the front page.



# Cedarville University "Lady Jackets" (14-13)

Cedarville, OH

Head Coach: Doug Walters



No	Player	Pos	Ht	Yr	Hometown	High School
1	Angela Becker	L/DS	5-7	Jr	Denver, CO	Thomas Jefferson
2	Kristin Cardwell	S	5-7	Jr	Massillon, OH	Jackson
3	Kristen Reynolds	S	5-7	Fr	Chattanooga, TN	Boyd-Buchanan
5	Ashley Gould	OH	6-0	Fr	New Glarus, WI	New Glarus
6	Krissy Pratt	OH	5-11	So	Crystal Lake, IL	Crystal Lake Central
7	Abby Woodard	L/DS	5-5	Fr	Camden, OH	Preble Shawnee
9	Emily Gewirtz	L/DS	5-4	So	Ashmore, IL	Judah Christian
10	Alyssa Barkley	OH	5-11	Sr	San Diego, CA	Santa Fe Christian
11	Faith Ferris	MH	6-1	Fr	Delton, MI	Delton Kellogg
12	Abby Shelton	OH	5-10	Jr	Sparta, GA	Chaparral
13	Taylor Wilkerson	OH	5-11	Fr	Brookfield, WI	Brookfield East
14	Rachel Krikke	MH	6-1	Jr	N. Royalton, OH	North Royalton
15	Katie Sir	OH/S	6-2	So	Eden Prairie, MN	Eden Prairie

## AVCA NCAA II National Rankings - Poll #9

November 2, 2015

Rank	School (First-Place Votes)	Total Points	2015 Record	Previous Rank
1	Concordia-St. Paul (25)	1124	20-4	3
2	Southwest Minnesota State (10)	1089	21-3	4
3	Wayne State (Neb.) (1)	1048	22-3	6
4	Northern State (1)	1031	22-2	2
T-5	Ferris State (5)	1015	23-2	1
T-5	Tampa (1)	1015	20-4	5
7	Wheeling Jesuit (2)	923	25-3	7
8	Rockhurst (1)	882	25-2	8
9	Washburn (2)	783	25-2	10
10	Minnesota Duluth	773	18-7	9
11	Alaska-Anchorage	697	20-2	11
12	Nebraska-Kearney	654	23-5	13
13	Central Missouri	623	22-4	15
14	Palm Beach Atlantic	586	21-3	14
15	Central Oklahoma	568	23-3	12
16	Western Washington	467	18-4	16
17	Cal State San Bernardino	389	21-3	19
18	Lewis	301	23-3	21
19	Florida Southern	287	19-6	17
20	Augustana (SD)	248	16-8	20
21	Sonoma State	238	18-3	22
22	Colorado School of Mines	224	19-5	18
23	West Florida	188	22-5	23
24	Winona State	118	15-8	24
25	Central Washington	71	16-5	25

Others receiving votes and listed on two or more ballots: Angelo State 44; Arkansas-Fort Smith 35; Missouri Western 32; Findlay 31; Wingate 23; Grand Valley State 21; Tarleton State 20; Ashland 17; California Baptist 10; NW Nazarene 6; Texas Woman's 6;

8 teams mentioned on only one ballot for a total of 18 combined points.






**After the match great meals are waiting for you in Beavercreek!**

It is our pleasure and intention to cater your meeting, event, or party with the same fresh food served hot or cold which ever you prefer.  
We will be on time and ready to make your event a success.  
Looking forward to serving you!  
Visit our website today or find us on Facebook.  
On line ordering is now available.

<p><b>Beavercreek Free Standing Unit</b> 2360 North Fairfield Road Beavercreek, Ohio 45431 937.320.1228</p>	<p><b>The Mall at Fairfield Commons</b> 2727 North Fairfield Road Beavercreek, Ohio 45431 937.320.1224</p>
---	--

www.cfarestaurant.com/beavercreek/home    www.cfarestaurant.com/fairfieldcommons/home



**Springfield, Ohio • 937-325-8480**

# Indiana University East "Red Wolves" (23-13)

## Richmond, IN Head Coach: Abigail Niekamp




No	Player	Pos	Ht	Yr	Hometown	Previous School
1	Hayley Myers	DS	5-7	Fr	Winchester, IN	Winchester Community HS
2	Hannah Best	DS	5-2	So	Greenfield, IN	Campbellsville University
4	Madison Yoder	DS	5-5	So	Indianapolis, IN	Ben Davis HS
5	Madison Crist	S/OH	5-10	Fr	Hartford City, IN	Blackford HS
7	Bailey Gates	MH/OH	5-10	So	Winchester, IN	Winchester Community HS
8	Peyton Perkins	OH/DS	5-9	Fr	Indianapolis, IN	Lawrence North HS
9	Sydney Durham	MH	6-1	So	Noblesville, IN	South Florida State CC
10	Tori Snyder	MH/OH	5-8	Fr	Wabash, IN	Northfield HS
11	Melissa Bedell	OH	5-8	Fr	Greenfield, IN	Eastern Hancock HS
12	Isabella Pavey	S	5-3	Fr	Liberty, IN	Union County HS
13	Mallory Livingston	OH	5-9	Sr	Union City, OH	Mississinawa Valley HS
16	Abbey Ketchem	OH/S	5-10	Fr	Indianapolis, IN	Perry Meridian HS
21	Morgan Steinbrunner	MH	6-0	Jr	Rockford, OH	Parkway HS

US DOT No. 077949 PUCO No. 1455HG

**Agent for United**

**OHIO MOVING**  
SAME OR NEXT DAY DELIVERY  
"Moving for three generations"



**BBB ACCREDITED BUSINESS**

**NATIONAL AND WORLD WIDE PRE-PLANNED MOVING**

RESIDENTIAL • COMMERCIAL • OFFICE • EXPERT PACKING & CRATING

**ROLLINS for Moving**  
LOCAL-NATIONAL-WORLD WIDE WITH THE SAME QUALITY SERVICE  
PROFESSIONAL PACKING AND CRATING

**ROLLINS for Storage**  
FULLY INSURED CONTAINERIZED STORAGE

**ROLLINS for Care**  
FULL VALUE PROTECTION

1900 E. LEFFEL LANE SPRINGFIELD, OHIO 45505

**ROLLINS MOVING & STORAGE INC.**  
**325-2484**  
www.rollinsmoving.com



**Comfort Suites**  
121 Raydo Circle  
Springfield, OH 45506

**937-322-0707**

- All Suite Rooms
- Hot Deluxe Breakfast

Only 12 miles from CU!  
Proud to support the Yellow Jackets!!

National Church Residences  
LEGACY VILLAGE

**A DISTINCTIVE SENIOR RETIREMENT COMMUNITY.....**



Independent Living Patio Homes, Assisted Living, Memory Care, and a NEW Skilled Rehabilitation Center

695 Wycliffe Drive ♦ Xenia, Ohio ♦ 45385 ♦ 888-712-0837  
www.legacyvillagehomes.org



# 2015 Indiana University East Volleyball Statistics

Name	ATTACK					SET					SERVE					PASS			DEF			BLOCK			GEN		Pts	P/G			
	GP	MP	K	K/G	E	TA	Pct	A	A/G	TA	Pct	SA	SA/G	SE	TA	Pct	RE	TA	Pct	DIG	D/G	BS	BA	TOT	B/G	BE			BHE		
1 Myers, Hayley	15	10	0	0.00	0	0	0.000	0	0.00	6	0.000	0	0.00	2	20	0.900	0	28	1.000	8	0.53	0	0	0.0	0.00	0	0	0.0	0.0	0.0	0.0
2 Best, Hannah	127	36	0	0.00	3	17	-0.176	20	0.16	105	0.190	14	0.11	29	178	0.837	27	385	0.930	229	1.80	0	0	0.0	0.00	0	0	14.0	0.11		
4 Yoder, Madison	131	36	9	0.07	15	82	-0.073	104	0.79	503	0.207	31	0.24	48	395	0.878	61	963	0.937	550	4.20	0	0	0.0	0.00	0	9	40.0	0.31		
5 Crist, Madison	2	1	0	0.00	0	3	0.000	0	0.00	0	0.000	0	0.00	0	0	0.000	0	0	0.000	0	0.00	0	0	0.0	0.00	0	0	0.0	0.0	0.0	0.0
7 Gates, Bailey	131	36	257	1.96	162	773	0.123	6	0.05	27	0.222	26	0.20	51	295	0.827	15	160	0.906	67	0.51	4	41	45.0	0.34	3	1	307.5	2.35		
9 Durham, Sydney	131	36	231	1.76	62	561	0.301	6	0.05	49	0.122	44	0.34	52	543	0.904	3	35	0.914	86	0.66	29	89	118.0	0.90	15	2	348.5	2.66		
11 Bedell, Melissa	130	36	173	1.33	72	593	0.170	8	0.06	31	0.258	2	0.02	1	7	0.857	2	17	0.882	61	0.47	3	38	41.0	0.32	0	2	197.0	1.52		
12 Pavey, Isabella	130	36	22	0.17	13	66	0.136	232	1.78	683	0.340	25	0.19	36	397	0.909	3	7	0.571	234	1.80	0	1	1.0	0.01	1	31	47.5	0.37		
13 Livingston, Mallory	131	36	495	3.78	184	1234	0.252	35	0.27	130	0.269	27	0.21	30	496	0.940	45	718	0.937	329	2.51	4	57	61.0	0.47	1	1	554.5	4.23		
16 Ketchem, Abbey	131	36	100	0.76	54	364	0.126	1013	7.73	2453	0.413	39	0.30	21	529	0.960	2	12	0.833	336	2.56	3	36	39.0	0.30	2	23	160.0	1.22		
21 Steinbrunner, Morgan	131	36	287	2.19	118	650	0.260	9	0.07	30	0.300	0	0.00	2	3	0.333	3	36	0.917	19	0.15	23	95	118.0	0.90	3	2	357.5	2.73		
99 Snyder, Tori	28	10	25	0.89	22	82	0.037	5	0.18	10	0.500	0	0.00	0	0	0.000	0	0	0.000	8	0.29	0	12	12.0	0.43	1	0	31.0	1.11		
Totals	131	36	1599	12.21	705	4425	0.202	1438	10.98	4027	0.357	208	1.59	272	2863	0.905	174	2375	0.927	1927	14.71	66	369	250.5	1.91	26	71	2057.5	15.71		
Opponent			1301	9.93	769	4318	0.123	1188	9.07	3233	0.367	174	1.33	199	2074	0.904	207	2055	0.899	1856	14.17	62	294	209.0	1.60	40	88	1684.0	12.85		

8/21/2015	Grace (Ind.)	A	2-3	L
8/21/2015	IU Kokomo (Ind.)	A	1-3	L
8/22/2015	Trinity Christian (Ill.)	H	3-0	W
8/22/2015	St. Ambrose (Iowa)	H	3-1	W
8/28/2015	Northwestern Ohio	N	1-3	L
8/28/2015	Lindsey Wilson (Ky.)	A	0-3	L
8/29/2015	Union	N	1-3	L
8/29/2015	Bethel (Tenn.)	N	3-1	W
9/2/2015	Earlham College	A	3-0	W
9/4/2015	Point Park (Pa.) *	A	3-0	W
9/4/2015	Taylor (Ind.)	N	0-3	L
9/5/2015	Lawrence Tech (Mich.)	N	3-2	W
9/5/2015	West Liberty State	N	3-1	W
9/10/2015	IU Southeast (Ind.) *	A	0-3	L
9/12/2015	Shawnee State (Ohio)	A	2-3	L
9/19/2015	Alice Lloyd (Ky.) *	H	3-0	W
9/19/2015	IU South Bend (Ind.)	H	2-3	L
9/23/2015	Anderson	A	3-0	W
9/26/2015	Governors State (Ill.)	N	3-0	W
9/26/2015	Purdue Calumet (Ind.)	A	3-0	W
9/29/2015	Ohio Christian (Ohio) *	H	3-1	W
10/2/2015	Bethel (Ind.)	A	0-3	L
10/6/2015	Marian (Ind.)	A	2-3	L
10/10/2015	Midway (Ky.) *	H	3-0	W
10/10/2015	Saint Francis (Ind.)	H	3-0	W
10/13/2015	Rio Grande (Ohio) *	A	3-1	W
10/17/2015	Brescia (Ky.) *	H	3-1	W
10/17/2015	WVU Tech *	H	3-0	W
10/20/2015	Asbury (Ky.) *	H	2-3	L
10/23/2015	Indiana Tech	A	3-0	W
10/23/2015	Cumberlands (Ky.)	N	1-3	L
10/24/2015	Ave Maria (Fla.)	N	3-0	W
10/24/2015	Goshen (Ind.)	N	3-0	W
10/29/2015	IU Kokomo (Ind.) *	H	3-1	W
10/31/2015	Carlow (Pa.) *	N	3-0	W
10/31/2015	Cincinnati Christian (Ohio) *	A	3-0	W
11/3/2015	Cedarville	A	7:00 PM	



**(937) 433-8268**

**Cotterman & Company INC.**

**Industrial & Commercial Roofing**  
[www.CottermanRoofing.com](http://www.CottermanRoofing.com)  
 Dayton & Minster, Ohio

**Mom and Dad's Dairy Bar & Grille**

320 N. Main Street,  
 Cedarville, OH  
 (937)766-2046  
 Offering Game Night  
 Specials

**Hightech Automotive**

Appointments for sick cars  
 and unhappy owners;

**937.766.9852**

105 West Xenia Ave., Cedarville, OH



**Colonial Pizza**

98 North Main • Cedarville, Ohio 45314  
**766-5779**

Owned and operated by Ronnie, Sandy & Toby Acton

**HOURS:**  
 — Sunday —  
 5:00 pm to 11:00 pm  
 — Monday thru Thursday —  
 11:00 am to 11:00 pm  
 — Friday & Saturday —  
 11:00 am to 12:00 pm

[colonialpizzacedarville.com](http://colonialpizzacedarville.com)  
**ONLINE ORDERING  
 NOW AVAILABLE!**

# 2015 Cedarville University Volleyball Statistics

RECORD:	OVERALL	HOME	AWAY	NEUTRAL
ALL GAMES	14-13	9-0	4-5	1-8
CONFERENCE	8-1	5-0	3-1	0-0
NON-CONFERENCE	6-12	4-0	1-4	1-8

##	Player	sp	Attack				Set		Serve			Dig			Blocking					points		
			k	k/s	e	ta	pct	a	a/s	sa	se	sa/s	re	dig	dig/s	bs	ba	total	blk/s		be	bhe
12	Shelton, Abby	85	326	3.84	176	827	.181	20	0.24	24	35	0.28	35	200	2.35	3	32	35	0.41	6	2	-
6	Pratt, Krissy	85	242	2.85	115	711	.179	12	0.14	31	52	0.36	25	204	2.40	3	23	26	0.31	5	2	-
14	Krikke, Rachel	97	217	2.24	34	507	.361	10	0.10	28	18	0.29	0	46	0.47	1	78	79	0.81	5	0	-
13	Wilkerson, Taylor	97	137	1.41	69	444	.153	4	0.04	7	17	0.07	9	53	0.55	2	62	64	0.66	2	0	-
10	Barkley, Alyssa	91	121	1.33	59	401	.155	3	0.03	5	2	0.05	0	32	0.35	3	55	58	0.64	5	1	-
5	Gould, Ashley	11	8	0.73	4	17	.235	2	0.18	0	0	0.00	0	1	0.09	0	1	1	0.09	1	0	-
11	Ferris, Faith	54	39	0.72	25	126	.111	0	0.00	1	0	0.02	0	6	0.11	3	30	33	0.61	1	0	-
2	Cardwell, Kristin	98	68	0.69	19	166	.295	795	8.11	36	28	0.37	0	164	1.67	0	16	16	0.16	2	17	-
15	Sir, Katie	28	13	0.46	13	51	.000	2	0.07	0	0	0.00	0	2	0.07	0	11	11	0.39	2	0	-
1	Becker, Angela	97	4	0.04	1	37	.081	84	0.87	18	16	0.19	23	388	4.00	0	0	0	0.00	0	0	-
7	Woodard, Abby	60	1	0.02	2	7	-.143	11	0.18	17	7	0.28	10	95	1.58	0	0	0	0.00	0	0	-
9	Gewirtz, Emily	20	0	0.00	2	2	-1.000	2	0.10	1	1	0.05	6	14	0.70	0	0	0	0.00	0	0	-
3	Reynolds, Kristen	56	0	0.00	2	3	-.667	139	2.48	20	30	0.36	2	72	1.29	0	0	0	0.00	0	4	-
TEAM		-	-	-	-	-	-	-	-	-	-	-	16	-	-	-	-	-	-	-	-	-
CEDARVILLE		98	1176	12.00	521	3299	.199	1084	11.06	188	206	1.92	126	1277	13.03	15	308	169.0	1.72	29	26	-
Opponents		98	1148	11.71	488	3164	.209	1075	10.97	127	194	1.30	188	1398	14.27	35	342	206.0	2.10	39	38	-

Team Statistics	CED	OPP
<b>ATTACK</b>		
Kills	1176	1148
Errors	521	488
Total Attacks	3299	3164
Attack Pct	.199	.209
Kills/Set	12.0	11.7
<b>SET</b>		
Assists	1084	1075
Attempts	3314	3277
Assist Pct	.327	.328
Assists/Set	11.1	11.0
<b>SERVE</b>		
Aces	188	127
Errors	206	194
Attempts	2187	2133
Serve Pct	.906	.909
Aces/Set	1.9	1.3
<b>SERVE RECEPTIONS</b>		
Errors	126	188
Errors/Set	1.3	1.9
Attempts	1945	1983
Reception Pct	.935	.905
<b>DEFENSE</b>		
Digs	1277	1398
Digs/Set	13.0	14.3
<b>BLOCKING</b>		
Block Solo	15	35
Block Assist	308	342
Total Blocks	169.0	206.0
Blocks/Set	1.7	2.1
Block Errors	29	39
Ball handling errors	26	38
<b>ATTENDANCE</b>		
Total	4574	1646
Dates/Avg Per Date	9/508	9/183
Neutral site #/Avg	9/62	-
Current win streak	2	-
Home win streak	9	-

Date	Opponent	Score	Score by set	Att.
+Sep 04	vs Fort Hays State	L 1-3	18-25,25-21,20-25,22-25	83
+Sep 04	at Northern Michigan	L 1-3	21-25,25-20,16-25,19-25	205
+Sep 05	vs Lake Superior State	w 3-0	25-19,25-21,25-17	62
+Sep 05	vs Michigan Tech	L 0-3	23-25,17-25,23-25	67
Sep 08	INDIANAPOLIS	w 3-2	17-25,26-24,25-21,23-25,15-12	1176
%Sep 11	vs Pitt-Johnstown	L 1-3	25-19,22-25,13-25,14-25	70
%Sep 11	vs Mercyhurst	L 0-3	23-25,16-25,22-25	55
%Sep 12	vs Hillsdale	L 1-3	21-25,15-25,25-23,21-25	27
%Sep 12	at Findlay	L 0-3	17-25,17-25,22-25	237
Sep 15	at Malone	L 1-3	18-25,16-25,25-13,22-25	117
Sep 18	CHARLESTON	w 3-0	25-16,25-14,25-17	453
Sep 22	URBANA	w 3-0	25-19,26-24,32-30	305
*Sep 25	ALDERSON BROADDUS	w 3-1	25-22,25-23,23-25,25-13	678
*Sep 26	DAVIS & ELKINS	w 3-0	25-17,25-21,25-14	208
Sep 29	SOUTHERN INDIANA	w 3-1	16-25,25-19,26-24,25-20	382
*Oct 02	KENTUCKY WESLEYAN	w 3-0	25-23,26-24,25-11	646
*Oct 03	TREVECCA	w 3-1	22-25,25-14,25-23,25-19	481
*Oct 06	URSULINE	w 3-0	25-15,25-15,25-17	245
Oct 13	at Central State	w 3-0	25-7,25-6,25-8	324
#Oct 16	vs Missouri S&T	L 0-3	22-25,9-25,18-25	75
#Oct 16	vs #8 Rockhurst	L 1-3	22-25,13-25,25-21,15-25	75
#Oct 17	vs Drury	L 0-3	18-25,20-25,18-25	43
*Oct 23	at Salem International	w 3-0	25-17,25-13,25-18	71
*Oct 24	at Ohio Valley	L 1-3	25-22,25-27,15-25,22-25	100
Oct 27	at Bellarmine	L 1-3	25-19,20-25,18-25,14-25	68
*Oct 30	at Trevecca	w 3-2	25-22,17-25,26-24,22-25,15-10	409
*Oct 31	at Kentucky Wesleyan	w 3-2	22-25,25-12,22-25,25-19,15-13	115

\* Great Midwest Athletic Conference  
 + Northern Michigan Open  
 % Findlay Invitational  
 # Mizuno Midwest Region Crossover

Record in 3-set matches: 8-5  
 Record in 4-set matches: 3-8  
 Record in 5-set matches: 3-0



"Official Charter Company  
 of the Cedarville  
 Yellow Jackets"

**937-879-3000**

8250 Expansion Way  
 Dayton, OH 45424

# All-Time Series Records

1098 Wins — 705 Losses — .609 Pct. — 53 Years (thru 10/31/15)

	W	L		W	L
Akron	1	0	Hiram	2	0
Albertson	0	2	Hope International	2	0
<b>Alderson Broaddus</b>	<b>8</b>	<b>1</b>	Houghton	5	1
Alliant International	1	0	Huntington	6	4
Alma	1	0	Illinois-Springfield	3	0
Anderson	9	4	Illinois Tech	0	2
Antioch	1	2	Indiana PA	3	0
Aquinas	6	0	<b>Indiana East</b>	<b>2</b>	<b>4</b>
Arkansas Tech	0	1	Indiana Southeast	1	3
Asbury	3	0	Indiana Tech	2	4
Ashland	2	7	Indiana Wesleyan	19	18
Baldwin-Wallace	4	0	<b>Indianapolis</b>	<b>11</b>	<b>5</b>
Barat	1	0	Iowa Wesleyan	0	1
<b>Bellarmine</b>	<b>0</b>	<b>3</b>	IUPUI-Indianapolis	4	1
Benedictine KS	1	0	John Carroll	0	3
Berea	1	0	Judson	2	1
Berry	1	0	Kent State	2	1
Bethany	1	1	<b>Kentucky State</b>	<b>1</b>	<b>0</b>
Bethel IN	9	5	<b>Kentucky Wesleyan</b>	<b>8</b>	<b>2</b>
Bluffton	8	25	Kenyon	12	3
Bowling Green	0	6	King	1	0
Brescia	1	0	Lake Erie	5	2
Caldwell	1	0	<b>Lake Superior State</b>	<b>1</b>	<b>0</b>
California PA	0	1	Lee	0	3
California Baptist	0	2	Le Moyne	1	0
Campbellsville	2	2	Lincoln Memorial	1	0
Capital	9	12	Lindenwood	1	1
Carlow	5	0	Lock Haven	0	1
Carthage	0	1	Madonna	1	3
Case Western Reserve	3	0	Maine-Machias	2	0
<b>Central State</b>	<b>69</b>	<b>11</b>	<b>Malone</b>	<b>30</b>	<b>20</b>
Centre	1	0	Manchester	4	1
<b>Charleston</b>	<b>4</b>	<b>0</b>	Marian	2	1
Chicago State	0	1	Marietta	1	1
Chowan	1	0	Marshall	1	1
Christian Heritage	1	4	Mars Hill	1	0
Cincinnati	1	13	Maryville	2	0
Cincinnati Christian	15	0	Master's	1	2
Clarion	0	1	McKendree	0	3
Clearwater Christian	2	0	<b>Mercyhurst</b>	<b>0</b>	<b>1</b>
Cleveland State	1	2	Miami OH	3	5
Colorado Christian	1	0	Michigan-Dearborn	3	4
Columbia	0	1	<b>Michigan Tech</b>	<b>2</b>	<b>1</b>
Columbus State	1	0	MidAmerica Nazarene	1	0
Concord	2	0	Midway	2	0
Concordia MI	8	0	Milligan	1	0
Cornerstone	8	3	<b>Missouri S&amp;T</b>	<b>0</b>	<b>1</b>
Cumberland TN	2	0	Morehead State	0	2
Cumberlands KY	2	0	Morris Harvey	1	0
Daemen	4	2	Mount St. Joseph	2	34
Dallas	1	0	Mount Union	7	0
Dallas Baptist	1	0	Mt. Vernon Nazarene	25	41
Davenport	3	0	Mountain State	3	0
<b>Davis &amp; Elkins</b>	<b>7</b>	<b>0</b>	Muskingum	7	6
Dayton	3	25	Northern Kentucky	0	1
Defiance	24	13	<b>Northern Michigan</b>	<b>1</b>	<b>1</b>
Denison	11	3	Northwest WA	1	0
DePauw	3	0	Northwestern IA	1	0
Doane	0	1	Northwestern MN	2	0
<b>Drury</b>	<b>0</b>	<b>1</b>	Northwestern Ohio	2	1
Earlham	13	2	Northwood FL	1	0
Eastern Illinois	0	1	Notre Dame OH	15	1
Eckerd	0	4	Oakland City	5	1
Edinboro	1	0	Oberlin	7	0
Fairmont State	0	1	Ohio	3	7
Faulkner	1	0	Ohio Dominican	51	19
Ferris State	0	1	Ohio Northern	7	10
<b>Findlay</b>	<b>15</b>	<b>21</b>	Ohio State	0	8
Flagler	1	1	<b>Ohio Valley</b>	<b>9</b>	<b>1</b>
Florida Southern	0	1	Ohio Wesleyan	9	4
Florrisant Valley	0	1	Olivet	4	0
<b>Fort Hays State</b>	<b>0</b>	<b>1</b>	Olivet Nazarene	4	4
Franklin	1	5	Otterbein	15	5
Fresno Pacific	0	1	Palm Beach Atlantic	2	5
Geneva	7	1	Penn State-Behrend	1	0
Georgetown	1	4	Pensacola Christian	1	0
Glennville State	3	0	Pikeville	2	0
Goshen	1	0	<b>Pitt-Johnstown</b>	<b>0</b>	<b>1</b>
Grace	24	14	Pittsburgh-Bradford	1	0
Hanover	5	4	Point Park	7	1
Harding	0	1	Quincy	0	1
Hastings	0	1	Rio Grande	41	14
Heidelberg	9	4	Robert Morris IL	2	0
Henderson State	0	1	Roberts Wesleyan	7	0
<b>Hillsdale</b>	<b>1</b>	<b>3</b>	<b>Rockhurst</b>	<b>0</b>	<b>2</b>

	W	L		W	L
Saginaw Valley State	1	0	Tusculum	0	1
Saint Francis IL	0	2	Union TN	1	2
Saint Francis IN	10	4	<b>Urbana</b>	<b>63</b>	<b>4</b>
Saint Joseph's IN	1	5	<b>Ursuline</b>	<b>13</b>	<b>0</b>
Saint Leo	0	2	Virginia Union	1	0
Saint Mary NE	0	2	Walsh	17	35
Saint Vincent	8	0	Warner Southern	3	0
Saint Xavier	0	5	Washburn	0	1
Salem International	3	0	Webber International	2	0
Savannah Art & Design	0	1	West Alabama	1	0
Seton Hill	7	0	West Georgia	0	1
Shawnee State	39	4	West Liberty	3	0
Siena Heights	3	1	West Virginia Tech	1	0
Slippery Rock	0	1	West Virginia Wesleyan	1	1
<b>Southern Indiana</b>	<b>1</b>	<b>3</b>	Western	1	0
SW Assemblies of God	2	0	Western Baptist	1	0
Spring Arbor	17	14	<b>Wheeling Jesuit</b>	<b>0</b>	<b>4</b>
Sue Bennett	1	0	Wilberforce	3	0
Taylor	8	32	Wilmington	40	18
Taylor-Fort Wayne	4	0	Windsor ONT	1	0
Tennessee Temple	2	0	Wittenberg	29	22
Thomas More	1	5	Wooster	8	6
Tiffin	34	10	Wright State	4	5
Toledo	2	0	Xavier	7	5
<b>Trevecca Nazarene</b>	<b>8</b>	<b>2</b>	Youngstown State	0	1
Tri-State	0	2			
Trinity Christian	3	0			
Trinity International	7	1			

2015 Opponents in Bold

**PARADISE**  
Kettle Korn

**SUBWAY**  
eat fresh.

13 E. Chillicothe St.  
Cedarville, OH

**766-7299**

**RAYMOND JAMES**  
& ASSOCIATES, INC.  
Member New York Stock Exchange/SIPC

Lou Vision  
Vice President, Investments  
Lou.Vision@RaymondJames.com  
(937) 431-6700



MARKETS FLUCTUATE. RELATIONSHIPS SHOULDN'T.  
WE'RE WITH YOU EVERY STEP OF THE WAY.



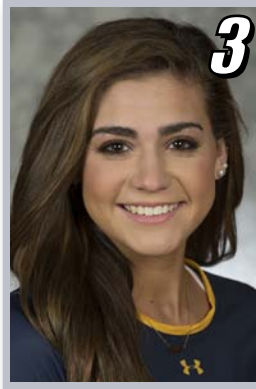
# 2015 Cedarville University Volleyball



**Angela Becker**  
5-6 • Junior  
L/DS • Denver, CO  
*@angeleighbee*



**Kristin Cardwell**  
5-7 • Junior  
S • Massillon, OH  
*@PlayMyCardsWell*



**Kristen Reynolds**  
5-7 • Freshman  
S • Chattanooga, TN  
*@kristenmckenna9*



**Ashley Gould**  
6-0 • Freshman  
OH • New Glarus, WI  
*@Ashley43Renee*



**Krissy Pratt**  
5-11 • Sophomore  
OH • Crystal Lake, IL  
*@krissypratt33*



**Abby Woodard**  
5-5 • Freshman  
L/DS • Camden, OH  
*@abbywoodard05*



**Emily Gewirtz**  
5-4 • Sophomore  
L/DS • Ashmore, IL  
*@emily\_gewirtz9*



**Alyssa Barkley**  
5-11 • Senior  
OH • San Diego, CA  
*@AlyssaBarkley2*



**Faith Ferris**  
6-1 • Freshman  
MH • Delton, MI  
*@faithferris*



**Abby Shelton**  
5-10 • Junior  
OH • Sparta, GA



**Taylor Wilkerson**  
5-11 • Freshman  
OH • Brookfield, WI  
*@tay\_wilkerson*



**Rachel Krikke**  
6-1 • Junior  
MH • N. Royalton, OH  
*@rachel\_krikke*



**Katie Sir**  
6-2 • Sophomore  
OH/S • Eden Prairie, MN  
*@katie\_sir*



#CUJACKETS

