
Women's Basketball Programs

Women's Basketball

2-15-2011

Cedarville vs. Wilberforce

Cedarville University

Follow this and additional works at: https://digitalcommons.cedarville.edu/womens_basketball_programs



Part of the [Higher Education Commons](#), and the [Sports Studies Commons](#)

Recommended Citation

Cedarville University, "Cedarville vs. Wilberforce" (2011). *Women's Basketball Programs*. 59.
https://digitalcommons.cedarville.edu/womens_basketball_programs/59

This Program is brought to you for free and open access by DigitalCommons@Cedarville, a service of the Centennial Library. It has been accepted for inclusion in Women's Basketball Programs by an authorized administrator of DigitalCommons@Cedarville. For more information, please contact digitalcommons@cedarville.edu.



GAME DAY

Tuesday, February 15, 2011

5:30 p.m.

vs. Wilberforce University



Inside GAME DAY

| | |
|---|-------|
| • <i>Tonight's Game Preview</i> | 2 |
| • <i>Kara Cayton's Weekly Blog</i> | 2 |
| • <i>Probable Starting Lineups</i> | 3 |
| • <i>Stat Comparisons</i> | 3 |
| • <i>Last Time Out</i> | 5 |
| • <i>Looking Ahead</i> | 5 |
| • <i>Follow the Lady Jackets</i> | 5 |
| • <i>Lady Jacket Player Profiles</i> | 7 |
| • <i>Tonight's Honorary Coach</i> | 7 |
| • <i>2010-11 Schedule / Results</i> | 7 |
| • <i>1,000 Point Club</i> | 9 |
| • <i>All-Time Series Records</i> | 9 |
| • <i>Cedarville / Wilberforce Stats</i> | 10 |
| • <i>Lady Jacket / Bulldog Rosters</i> | 11 |
| • <i>AMC Standings/News/Stats</i> | 12-13 |
| • <i>CU Season Top 10 Leaders</i> | 15 |
| • <i>CU Career Top 10 Leaders</i> | 15 |
| • <i>NAIA National Rankings</i> | 17 |
| • <i>Meet the Cheerleaders</i> | 19 |
| • <i>Meet the 2010-11 Lady Jackets</i> | 20 |

Colonial Pizza and Deli

98 North Main
Cedarville, Ohio 45314
766-5779

"Serving Its Hometown for Over a Decade"

Owned and operated by Ronnie and Sandy Acton

HOURS:

— Sunday —
5:00 pm to 11:00 pm
— Monday thru Thursday —
11:00 am to 11:00 pm
— Friday & Saturday —
11:00 am to 12:00 pm



Tonight's Corporate Sponsor

Hidy FAMILY of
CARS

- Honda
- Hyundai
- Ford
- Acura

937-426-9564



Comfort Suites

121 Raydo Circle
Springfield, OH 45506
937-322-0707

- All Suite Rooms
- Hot Deluxe Breakfast

Only 12 miles from CU!
Proud to support the Yellow Jackets!!



Tonight's Game Preview

The Cedarville University Lady Jackets host the Wilberforce University Bulldogs tonight in an American Midwest Conference game in the Callan Athletic Center.

Cedarville, ranked #14 in last week's NAIA II Top 25 Poll, enters the game 21-7 overall and 11-3 in the AMC. The Lady Jackets dropped a 74-63 decision at Mount Vernon Nazarene on Saturday. The Bulldogs are 3-26 overall with a 1-13 AMC record. Wilberforce has lost six consecutive games including a 94-69 set-back at Notre Dame on Saturday in South Euclid, Ohio.

The Lady Jacket lineup features three players scoring in double figures. Leading the way is senior post player Aubrey Siemon - averaging 13.3 ppg and 11.7 rebounds per game. She is CU's all-time leading rebounder with 1,277 in her career. Siemon's .544 field goal percentage and .863 mark at the charity stripe top the Lady Jackets.



Aubrey Siemon

Rookie Kayla Jenerette, a 5-5 guard, is the second Lady Jacket with a double-digit scoring average at 12.5 points per game. She leads CU with 55 steals and a .472 mark from long-range on 50-of-106 - best in NAIA II.



Kayla Jenerette

Senior guard Rachel Hurley adds 12.4 points per game while leading the team in assists with 87. Hurley is second on the team with 55 three-point field goals and currently ranks fourth all-time at CU in made three-pointers with 209.

Junior Kara Cayton, a 5-4 guard, has upped her scoring average to 9.2 points per game. She has a team-best 66 three-pointers and is second on the team in steals with 35. Cayton is tied for second with 79 assists.

Senior guard Lydia Miller is tossing in 9 ppg, is tied with Kara Cayton with a second-best 79 assists and has a third-best .824 mark from the stripe.

Starting forward Caitlyn Brooks, a 6-0 senior, adds 5.5 points and 3.6 rebounds per game. She is third on the squad with a .788 effort at the free-throw line.

Freshman Deborah Chandler comes off the bench to contribute 5.6 ppg and 3.8 rebounds per outing.

Cedarville shoots .437 from the field including 240-of-604 attempts from the three-point line for a .397 mark. The Lady Jackets are steady at the free throw line with a .773 team pct.

Cedarville is outscoring opponents by 13.5 points per game while holding them to .367 shooting from the floor. The Lady Jackets are controlling the boards with a +5.1 margin.

The Bulldogs are led by two players hitting in double figures. Danielle Lewis, a 5-5 junior, tops the team with 13.3 ppg and 93 assists. Andreacia Smith adds 10.2 points per game and is the top deep threat for Wilberforce with 59 three-point field goals. She adds a second-best .717 mark at the free throw line.

The top rebounder for the Bulldogs is 5-10 junior forward Tiara Roberts with 6.7 boards per contest.

Wilberforce is scoring 60.3 points per game while allowing 83.3 points per contest. The team is .322 from the field and just .270 from behind the three-point line. The Bulldogs struggle at the free throw line hitting 311-of-523 for a .595 effort.

The Lady Jackets lead the all-time series with Wilberforce by a dominating 32-1 margin including the 67-46 win on December 7, 2010 in Wilberforce, Ohio earlier this season. Rachel Hurley tossed in 12 with Kayla Jenerette adding 11 points. Aubrey Siemon posted a double-double of 10 points and 14 boards.



Kara Cayton's Latest Weekly Blog



February 14, 2011

This past week was another long one for us, as we had three away games. The regular season is coming to a close, and we are all seeing the end looming over us. We wish to push that end back as much as possible. This week we needed three wins in order to continue doing that.

I got the stomach flu on Monday, so I failed to make it to the game on Tuesday at Ursuline. All that I can say is, it was miserable having to sit and listen to that game from my dorm room! From what everyone else said, it was poorly played. I don't know exactly what happened, but I know that we must have really struggled against a team that we had previously beaten by 49. I am simply thankful that we made it through that game at all.

Thursday we played at Notre Dame College. It was a fight from the start. That little gym sounded like it had thousands of people in it when in reality; there were only a few hundred at best. The game came down to the last possession. We put the ball in the hands of our very capable freshman point guard, Kayla Jenerette, who did things as well as she could have. Kayla penetrated my side of the floor, her shot fell short (she actually got pretty hammered), Aubrey picked up the loose ball, and she made the shot at the buzzer! It was a crazy way to win, but it was sure exciting!

Saturday, we traveled to Mount Vernon. We were beaten and bruised, and we knew we would be a part of another battle that day. The beginning of the game was embarrassing, as we fell behind by almost twenty. We scraped our way back to cut it to eight at halftime. We finally regained the lead in the second half, but it came down to freshness. They converted shots late, and we didn't. We just lost our legs. Mount Vernon played well and simply beat us. It was a really tough game to lose and a really difficult time.

This week is Breast Cancer Awareness Week! We are at home against Wilberforce on Tuesday and Notre Dame on Saturday. I want to invite everyone out! Wear pink and see the really nice pink uniforms that Coach Flunker and Coach Travis picked out for us! They're sweet! Hopefully we can all come

together and support those in our university family, as well as those outside of it, who have battled or who are battling this disease! May God bless any family that has been affected by breast cancer, and may they cling to Him always! Think Pink!

Happy Valentine's Day!

Kara Cayton is a 5-foot-4 junior guard from South Webster, Ohio. She is in her third season of action with the Lady Jackets and is an organizational communications major.

Read more of Kara's writings as well as other Cedarville University student-athletes representing their sports at Yellow Jacket Blog Central. Just click on In-Season Blogs at the CU Sports Information website:

yellowjackets.cedarville.edu

twitter™

@CUYellowJackets...the official home of Yellow Jacket sports...get the very latest info, news, and updates about CU's 14 intercollegiate athletic teams.

Your ad here?
Promote your business!

Contact
Jeff Bolender

937-766-4136



ExpressSM
EMPLOYMENT PROFESSIONALS

Respecting People. Impacting Business.SM

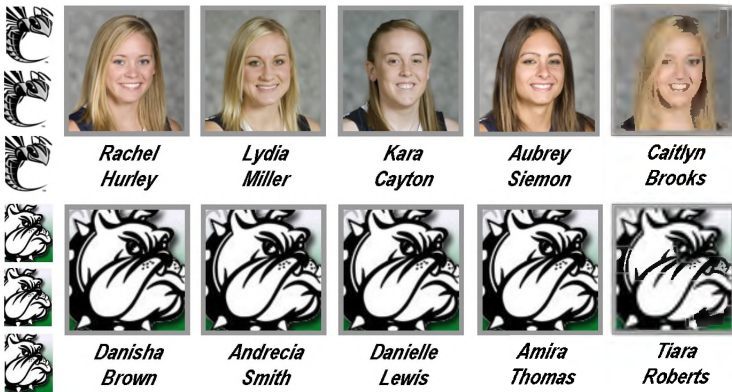
Beavercreek | (937) 431-5550

Online Applications — www.expresspros.com

Stat Comparison

| Current Record | 21-7 (11-3) | 3-26 (1-13) |
|---------------------|-------------|-------------|
| Points Scored/Game | 74.9 ✓ | 60.3 |
| Points Allowed/Game | 61.5 ✓ | 83.3 |
| FG % | .437 ✓ | .322 |
| 3-point FG % | .397 ✓ | .270 |
| FT % | .773 ✓ | .595 |
| Rebounds/Game | 41.5 ✓ | 39.0 |
| Assists/Game | 16.3 ✓ | 9.0 |
| Turnovers/Game | 15.5 ✓ | 15.6 |
| Blocked Shots/Game | 2.8 ✓ | 1.8 |
| Steals/Game | 8.8 ✓ | 7.4 |
| Current Streak | L1 ✓ | L6 |

155 W. Leffel Lane
Springfield, OH 45506
937-325-5356



Rachel Hurley

Lydia Miller

Kara Cayton

Aubrey Siemon

Caitlyn Brooks

Danisha Brown

Andreacia Smith

Danielle Lewis

Amira Thomas

Tiara Roberts

PROBABLE STARTERS:

| # | Cedarville 21-7 (11-3) | Pos. | PPG | RPG | APG |
|----|-------------------------------|------|------|------|-----|
| 11 | Rachel Hurley (5-4 senior) | G | 12.4 | 3.3 | 3.1 |
| 21 | Lydia Miller (5-8 senior) | G | 9.0 | 4.6 | 2.8 |
| 23 | Kara Cayton (5-5 junior) | G | 9.2 | 2.2 | 3.0 |
| 12 | Aubrey Siemon (6-1 senior) | C | 13.3 | 11.7 | 1.2 |
| 15 | Caitlyn Brooks (6-0 senior) | F | 5.5 | 3.6 | 1.3 |

| # | Wilberforce 3-26 (1-13) | Pos. | PPG | RPG | APG |
|----|--------------------------------|------|------|-----|-----|
| 11 | Danisha Brown (5-8 freshman) | G | 9.4 | 3.5 | 0.6 |
| 21 | Andreacia Smith (5-7 senior) | G | 10.2 | 3.2 | 1.7 |
| 24 | Danielle Lewis (5-5 junior) | G | 13.3 | 3.4 | 3.2 |
| 25 | Amira Thomas (5-11 freshman) | F | 3.1 | 6.5 | 0.1 |
| 34 | Tiara Roberts (5-10 junior) | F | 9.6 | 6.7 | 1.4 |

Hydly

FAMILY of CARS

- Honda
- Ford
- Hyundai
- Acura

937-426-9564

Taste All That Life Has To Offer.



Experience the best things in life at the new Courtyard by Marriott in Downtown Springfield. Stay for a night or for a week in our beautifully-renovated hotel. Enjoy our garden pool, hot tub, business center and complimentary high-speed Internet. Taste the delicious fare of the Mēla Urban Bistro. Or just unwind at the Mēla lounge.

taste | life

100 south fountain • downtown springfield • 937.322.3600 • www.melaurbanbistro.com



SR 72 North

(Located across from Cedarville University)

**Offering SUNOCO fuel, groceries,
pizza for your convenience**

(937) 766-1201

**Open 7 days a week, 24 hours a day
Pay at the pump!**



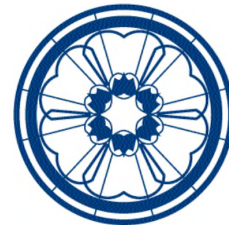
9 South Main Street,
Cedarville, OH 45314
937-766-9900

Open: Mon.-Fri., 9 am to 6 pm, Sat., 9 am to 1 pm
FREE DELIVERY



*"Best Wishes to the CU
Yellow Jackets!"*

www.greenecountyohio.org
1-800-733-9109



GRACE
BAPTIST CHURCH

SOWING SEED....BEARING FRUIT
WWW.GRACECEDARVILLE.ORG

Beavercreek Rental

TOOLS & EQUIPMENT

Dayton, Ohio 45430

937-429-3444



ORTHOPAEDIC INSTITUTE OF DAYTON, INC.

Main Office - Kettering
3205 Woodman Drive
937-298-4417

Pietro Seni, M.D.
Diagnostic Orthopaedics

Richard W. Forster, M.D.
Total Joint Replacement

Marcos E. Amongero, M.D.
Surgery of the Spine

Kevin J. Paley, M.D.
Shoulder & Knee Surgery & Sports Medicine

Jeffrey S. Hoskins
Surgery of the Spine

Frank P. Mannarino, M.D.
Knee Surgery & Sports Medicine

Tipp City Office
25 S. Tippecanoe Drive
937-669-0909

Paul A. Nitz, M.D.
Shoulder & Knee Surgery & Sports Medicine

Gene C. Kim, M.D.
Hand Surgery

Barry A. Fisher, M.D.
Primary Care Sports Medicine

David S. Seymour, M.D.
Physical Medicine & Rehabilitation

Matthew Hodges, DO

Ryan Bauman, M.D.

Nicolas Grisoni, M.D.

Best Wishes for a Great Season!

BIG ORANGE SHOES BOSS

BIG ORANGE SHOE SHOP

(937)465-6167
Open Daily Mon-Sat.

103 West Baird St., PO Box 605
West Liberty, OH 43357

Dennis & Julie McIntosh, Owners
www.bigorangeshoeshop.com

Last Time Out

Mount Vernon Nazarene bolted to an 18-point lead, but then had to regroup to knock off the NAIA Division II #14 Lady Jackets, 74-63, in an American Mideast Conference contest on Saturday afternoon in Mount Vernon, Ohio.



Rachel Hurley

Cedarville showed the effects of playing its third road game in five days by dropping into a 24-6 hole before the game was nine minutes old. An 11-3 run before the halftime buzzer cut the deficit to 39-31.

The Jackets started the second period on a 17-8 spurt to take their first lead, 48-47, with 13:20 to play. Becky Orchard's free throw at the 7:15 mark gave the visitors their final advantage at 56-55. The Cougars scored the next nine points and never looked back.

Rachel Hurley popped in five three-pointers and finished with 21 points for Cedarville, 21-7 overall and 11-3 AMC. Kara Cayton netted 11 points and Kayla Jenerette chipped in 10. Aubrey Siemon pulled down 16 rebounds.

MVNU upped its record to 18-7 and 9-5 AMC.

Looking Ahead

The Lady Jackets close out the 2010-11 regular season portion of the schedule versus the Notre Dame College Falcons on Saturday, Feb. 19 at 5:30 p.m.

Pending final standing placement in the American Mideast Conference, the Lady Jackets will wait for AMC post season competition.

Follow the Lady Jackets

Keep up with Lady Jacket women's basketball on the Internet by logging onto the Cedarville University sports information homepage. The address is yellowjackets.cedarville.edu and the site includes the schedule, roster, game statistics, cumulative stats, game recaps and photos, video highlights plus *Yellow Jacket Insider* - a weekly audio interview with Head Coach Kirk Martin.

facebook

twitter™

BACK THE JACKETS ON FACEBOOK, TWITTER, AND CU SMS ALERTS

Fans can follow Cedarville University Athletics on Facebook and Twitter. Sign up using the links on the sports information website. Look for the rotating graphics in the top right corner of the front page.

Become a fan on Facebook. On Twitter, you can track the Jackets via either the web or text message alerts.

Additionally, you can receive SMS (short message service) text message alerts on your cell phone by signing up on the CU sports information site. You manage your own account in the self-subscribe/unsubscribe system.

The service is free, but standard text message rates apply depending upon the plan you have with your carrier. Click "SMS Alerts" at the bottom right of the website.



FOREMAN-BLAIR

PONTIAC • BUICK • GMC

visit our website at...
www.foremanblair.com

1-800-640-6308

*Just Experience
Just* **Cotterman &
Company INC.**

Industrial & Commercial Roofing
www.CottermanRoofing.com

Dayton & Minster, Ohio
937-433-8268

GREENE COUNTY EYE CARE, INC.

MORE THAN GREAT VISION

Xenia • 376-4055
Cedarville • 766-2622
Yellow Springs • 767-7991

Quality Inn

Springfield, Ohio
937-323-8631

“We back the Jackets!”

**SCREEN
PRINTING**

**OFFSET
PRINTING**

**DESIGN
SERVICES**

**ADVERTISING
SPECIALTIES**

**EMBROIDERY
& PATCHES**

**PLAQUES
& TROPHIES**

**WALNUTS
ASK US!!**

1450 S. Patton Street
Xenia, Ohio 45385
Fax: 374-0111

PRINTING

374-2646



FOR THE TRUTH • FOR THE CHURCH • FOR THE WORLD

“PREACH
the
Word.”

HOLY
BIBLE



The Southern Baptist
Theological Seminary
Louisville, Kentucky • www.sbt.edu

FOR THE GLORY OF GOD

Stacie Travis, Dir. of Basketball Operations



Stacie Travis is in her second season as part of the Lady Jacket basketball coaching staff. She is the program's first Director of Basketball Operations after serving as the junior varsity coach last year.

Travis was a four-year varsity player at Cedarville from 2003-07. A starting guard during her final two seasons, she scored 763 career points and ranks 8th all-time at CU with 139 three-point field goals made.

Travis was part of four American Midwest Conference championship teams that advanced to the NAIA Division II Tournament where the Lady Jackets finished as the runner-up twice.

Travis was the assistant volleyball coach at CU in 2007. She spent the 2008-09 academic year as the head girls varsity basketball and volleyball coach at her alma mater, Greenbrier Christian Academy in Virginia.

Travis is a 2007 graduate of Cedarville University with a degree in physical education. She is currently pursuing a master's degree in exercise science at the University of Dayton.

WBCA Pink Zone Week



As part of the Women's Basketball Coaches Association (WBCA) Pink Zone Week, the final two regular season contests for the Lady Jackets are dedicated to Breast Cancer Research.

In support of this, the Lady Jackets will sport new pink uniforms and encourage all who attend to wear their 'pink' as well. If possible, those in attendance are asked to bring \$1, or more if possible, to donate towards breast cancer research. The two-game event supports the Kay Yow Cancer Fund in partnership with the WBCA.



Tonight's Honorary Coach



Kent Young

Main Desk Supervisor • Doden Field House
Cedarville University



"We have chosen Kent Young to be our honorary coach as a thank you for all he has done for us this season and in many previous seasons. Kent is a faithful supporter of our basketball program and he has also been a huge help in keeping our scorebook for away games. We appreciate his encouragement and constant support. Our program would not be the same with supporters like Kent Young!

Thank you, Kent!"

Selected by Lady Jacket Basketball Team

2010-11 Schedule/Results



Cedarville University "Lady Jackets" (21-7, 11-3 AMC)

November (4-3, 1-0 AMC)

| | | | |
|----------------|--------------------------|-------------------|-----------------|
| Nov. 12 | NORTHWESTERN OHIO | Cedarville | W 104-70 |
| Nov. 13 | INDIANA WESLEYAN# | Cedarville | L 57-70 |
| Nov. 16 | at Findlay | Findlay, OH | W 70-52 |
| Nov. 20 | at Urbana | Urbana, OH | L 74-79 |
| Nov. 23 | at Ohio Dominican | Columbus, OH | L 49-51 |
| Nov. 27 | at Michigan-Dearborn# | Dearborn, MI | W 96-78 |
| Nov. 30 | MALONE* | Cedarville | W 80-42 |

December (7-0, 2-0 AMC)

| | | | |
|----------------|-------------------------|-------------------|----------------|
| Dec. 4 | URSULINE* | Cedarville | W 98-49 |
| Dec. 7 | at Wilberforce* | Wilberforce, OH | W 67-46 |
| Dec. 9 | at Taylor | Upland, IN | W 79-58 |
| Dec. 11 | at Huntington# | Huntington, IN | W 75-64 |
| Dec. 18 | SAINT FRANCIS IN | Cedarville | W 69-62 |
| Dec. 29 | vs. Albany Pharmacy | W. Palm Beach, FL | W 94-53 |
| Dec. 30 | vs. Bethel IN | W. Palm Beach, FL | W 94-88 |

January (6-3, 4-2 AMC)

| | | | |
|----------------|------------------------------|-------------------|----------------|
| Jan. 4 | MT. VERNON NAZARENE* | Cedarville | W 78-50 |
| Jan. 8 | URBANA | Cedarville | W 85-65 |
| Jan. 15 | at Point Park*# | Pittsburgh, PA | W 70-59 |
| Jan. 18 | HILLSDALE | Cedarville | L 59-67 |
| Jan. 21 | CARLOW* | Cedarville | W 86-37 |
| Jan. 22 | WALSH* Alumni Weekend | Cedarville | L 53-70 |
| Jan. 25 | WITTENBERG | Cedarville | W 82-71 |
| Jan. 28 | at Houghton* | Houghton, NY | W 70-61 |
| Jan. 29 | at Daemen*# | Amherst, NY | L 66-68 |

February (4-1, 4-1 AMC)

| | | | |
|----------------|--|-------------------|----------------|
| Feb. 3 | at Malone* | Canton, OH | W 95-63 |
| Feb. 5 | ROBT. WESLEYAN*# Li'l Sibs Wknd | Cedarville | W 64-62 |
| Feb. 8 | at Ursuline | Pepper Pike, OH | W 64-57 |
| Feb. 10 | at Notre Dame OH* | South Euclid, OH | W 57-55 |
| Feb. 12 | at Mt. Vernon Nazarene* | Mt. Vernon, OH | L 63-74 |
| Feb. 15 | WILBERFORCE* | Cedarville | 5:30 pm |
| Feb. 19 | NOTRE DAME OH* | Cedarville | 5:30 pm |

HOME GAMES IN BOLD CAPS

*American Midwest Conference

90.3 WCDR Game of the Week

Watch all home games on LIVE VIDEO STREAM

All road games other than WCDR Games of the Week

carried live on free TEAMLINE internet

All Starting Times Local



TEAMLINE
LIVE PLAY-BY-PLAY & MORE

Trophy Sports Center

- Team Sales
- Awards
- Uniforms
- School Jackets
- Screen Printing



376-2311





**GREENE MEMORIAL
HOSPITAL**
KETTERING HEALTH NETWORK™



BELLO
SPAGHETTI • SUBS • STEAKS •

300 Xenia Town Square
(Located inside RAMADA INN)
Xenia, Ohio
372-9921



**AMERICAN FAMILY
INSURANCE**
AUTO HOME BUSINESS HEALTH LIFE®

Office:
(937)374-0855

**TODD W. SCHULZ
INSURANCE AGENCY**

65 Dayton Avenue
XENIA, OHIO 45385

www.toddschulzagency.com

**SHERIDAN
& ASSOCIATES** AUCTIONEERS, REAL ESTATE BROKER, APPRAISERS, LLC

(937) 767-2021
www.SheridanTeam.com



*We back the
Jackets all
the way*



*Cedarville's only Real Estate, Auction, &
Appraisal Company*

No-fee consultations available.



RE/MAX

DAVE JOHNSON
372-2626

fkci
f&k concepts, inc.

| | |
|----------------------|--|
| Promotional Products | 462 Carthage Drive Beavercreek, OH 45434 |
| Recognition Awards | |
| Engraving Service | Phone: 937-426-6843 |
| Signs and Panels | Fax: 937-426-9722 |
| Unique Projects | www.fkci.com |
| Name Badges | e-mail: fkci@fkci.com |
| Plaques | |

1,000 Point Club



-thru 2/12/11-



Brittany Smart 3,236 points (2003-07)
Kari Flunker 2,275 points (2001-05)
Kirsten Rossotti 2,229 points (1998-00, 2001-03)
Vicki Butler 2,103 points (1976-80)
Diane Rank 1,760 points (1988-92)



Alison Lemon 1,710 points (2006-10)
Julie Nourse 1,706 points (1997-2001)
Melissa Hartman 1,678 points (1992-96)
Julie Stauffer 1,656 points (2000-04)
Amy Zehr 1,642 points (1989-93)



Emily Delimpo 1,556 points (2002-06)
Aubrey Siemon 1,469 points (2007-11)
Chris Friesen 1,441 points (1985-89)
Karah Walton 1,331 points (2003-07)
Amanda Porter 1,322 points (1997-2001)



Rachel Hurley 1,173 points (2007-11)
Lydia Miller 1,135 points (2007-11)
Cathy Bunton 1,080 points (1974-78)
Kristi Beougher 1,063 points (2003-07)
Val Whisler 1,057 points (1979-83)

All-Time Series Records



-thru 2/12/11-

| | W | L | | W | L |
|-------------------------|-----------|-----------|------------------------------|------------|------------|
| Adelphi | 1 | 0 | Marian | 1 | 2 |
| Akron | 3 | 3 | Marshall | 0 | 2 |
| Albany Pharmacy | 1 | 0 | Masters | 0 | 1 |
| Alumnae | 6 | 0 | Miami | 3 | 5 |
| Anderson | 1 | 0 | Miami Valley Hospital | 4 | 1 |
| Antioch | 1 | 0 | Michigan Christian | 0 | 1 |
| Ashland | 10 | 10 | Michigan-Dearborn | 1 | 1 |
| Azusa Pacific | 0 | 1 | MidAmerica Nazarene | 0 | 2 |
| Ball State | 0 | 1 | Morehead State | 0 | 2 |
| Baptist Bible | 1 | 0 | Morningside | 2 | 2 |
| Bartlesville Wesleyan | 0 | 1 | Mount Carmel | 1 | 0 |
| Bethel IN | 3 | 2 | Mount St. Joseph | 16 | 18 |
| Bluffton | 14 | 20 | Mount Vernon Nazarene | 34 | 14 |
| Bowling Green | 1 | 6 | National Cash Register | 0 | 3 |
| Brewton Parker | 0 | 1 | Northern Kentucky | 0 | 2 |
| Briar Cliff | 0 | 1 | Northwestern IA | 0 | 1 |
| Bryan | 3 | 0 | Northwestern Ohio | 5 | 0 |
| California Baptist | 1 | 0 | Northwood FL | 1 | 0 |
| Capital | 9 | 3 | Notre Dame IN | 0 | 1 |
| Cardinal Stritch | 1 | 0 | Notre Dame OH | 9 | 1 |
| Carlow | 4 | 0 | Nyack | 1 | 0 |
| Central State | 16 | 16 | Oakland City | 3 | 2 |
| Cincinnati | 6 | 4 | Ohio | 3 | 5 |
| Cleveland State | 1 | 0 | Ohio Dominican | 30 | 25 |
| Collegiate | 0 | 1 | Ohio Northern | 6 | 4 |
| Colorado Christian | 1 | 0 | Ohio State | 0 | 7 |
| Concordia MI | 9 | 1 | Ohio Wesleyan | 7 | 2 |
| Concordia NE | 2 | 0 | Ohio-Belmont | 1 | 0 |
| Concordia NY | 1 | 1 | Ohio-Chillicothe | 2 | 0 |
| Daemen | 8 | 2 | Olivet Nazarene | 1 | 4 |
| Davis & Elkins | 1 | 0 | Otterbein | 1 | 1 |
| Dayton | 7 | 14 | Ozarks | 2 | 0 |
| Defiance | 8 | 19 | Point Park | 10 | 0 |
| Denison | 3 | 1 | Queens | 0 | 1 |
| Dyke | 0 | 3 | Rio Grande | 15 | 30 |
| Earlham | 4 | 0 | Roberts Wesleyan | 6 | 2 |
| Eastern Illinois | 0 | 1 | Saint Ambrose | 1 | 0 |
| Emmanuel | 0 | 1 | Saint Francis IL | 1 | 0 |
| Evangl | 0 | 2 | Saint Francis IN | 5 | 3 |
| Findlay | 7 | 23 | Saint Joseph's IN | 1 | 0 |
| Finlandia | 1 | 0 | Saint Vincent | 3 | 5 |
| Franklin | 0 | 1 | Seton Hill | 3 | 1 |
| Fresno Pacific | 1 | 0 | Shawnee State | 15 | 25 |
| Geneva | 8 | 1 | Siena Heights | 2 | 0 |
| Georgetown | 3 | 9 | Sioux Falls | 0 | 1 |
| Glenville State | 0 | 1 | Spring Arbor | 4 | 7 |
| Goshen | 2 | 0 | Springfield City Hospital | 1 | 0 |
| Grace | 9 | 4 | St. Elizabeth | 3 | 0 |
| Grand Rapids Baptist | 2 | 0 | St. Marys | 0 | 1 |
| Greenville | 1 | 0 | SUNY-Cortland | 0 | 1 |
| Grove City | 1 | 0 | Taylor | 22 | 10 |
| Hanover | 3 | 0 | Tennessee Temple | 2 | 0 |
| Hastings | 1 | 0 | Thomas More | 6 | 0 |
| Heidelberg | 1 | 1 | Tiffin | 26 | 15 |
| Hillsdale | 0 | 2 | Transylvania | 2 | 5 |
| Hope International | 1 | 0 | Trinity | 1 | 0 |
| Houghton | 5 | 0 | Trinity Christian | 3 | 1 |
| Huntington | 7 | 6 | Union KY | 1 | 0 |
| Indiana | 0 | 1 | Urbana | 34 | 24 |
| Indiana State | 0 | 2 | Ursuline | 9 | 0 |
| Indiana Tech | 2 | 1 | Vanguard | 0 | 1 |
| Indiana Wesleyan | 6 | 11 | Virginia-Wise | 1 | 0 |
| Indiana-South Bend | 2 | 1 | Walsh | 19 | 17 |
| Iowa Wesleyan | 0 | 1 | Warner Southern | 1 | 0 |
| John Brown | 0 | 1 | Webber International | 2 | 0 |
| John Carroll | 1 | 0 | West Virginia Wesleyan | 0 | 2 |
| Judson | 1 | 0 | Western | 1 | 0 |
| Kendall | 1 | 0 | Western Baptist | 0 | 1 |
| Kent State | 0 | 1 | Western Michigan | 1 | 1 |
| Kentucky Christian | 2 | 1 | Wheeling Jesuit | 1 | 0 |
| Kenyon | 6 | 1 | Wilberforce | 32 | 1 |
| King | 0 | 1 | Wilmington | 32 | 18 |
| Lake Erie | 4 | 0 | Wisconsin-LaCrosse | 1 | 0 |
| Lee | 2 | 0 | Wittenberg | 11 | 4 |
| Liberty | 0 | 2 | Wooster | 9 | 9 |
| Lindsey Wilson | 2 | 1 | Wright Patterson AFB | 4 | 0 |
| Lorain County | 1 | 0 | Wright State | 8 | 6 |
| Lyndon State | 2 | 0 | Xavier | 2 | 2 |
| Madonna | 7 | 2 | | 690 | 506 |
| Maine-Fort Kent | 2 | 0 | | | |
| Malloy | 1 | 0 | | | |
| Malone | 29 | 11 | | | |
| Manchester | 3 | 3 | | | |

(49 years - .576)

2010-11 Opponents in Bold

BUCKEYE CHARTERS

"Official Charter Company of the Cedarville Yellow Jackets"
 937-879-3000

8250 Expansion Way • Dayton, OH 45424

CRELLIN PLUMBING

QUALITY SERVICE for 50 YEARS
 1960 - 2010



"A broken cistern cannot hold water."
 Jeremiah 2:13

(937) 325-8006





2010-11 Cedarville University Basketball Statistics

| RECORD: | OVERALL | HOME | AWAY | NEUTRAL |
|----------------|---------|------|------|---------|
| ALL GAMES | 21-7 | 9-3 | 10-4 | 2-0 |
| CONFERENCE | 11-3 | 5-1 | 6-2 | 0-0 |
| NON-CONFERENCE | 10-4 | 4-2 | 4-2 | 2-0 |

| # | Player | gp-gs | min | avg | Total | | 3-Point | | F-Throw | | Rebounds | | | | pf | dq | a | to | blk | stl | pts | avg |
|----------------|-------------------|-------|------|------|----------|------|---------|------|---------|------|----------|-----|------|------|-----|----|-----|-----|-----|-----|------|------|
| | | | | | fg-fga | fg% | 3fg-fga | 3fg% | ft-fa | ft% | off | def | tot | avg | | | | | | | | |
| 12 | Siemon, Aubrey | 27-27 | 783 | 29.0 | 129-237 | .544 | 0-0 | .000 | 101-117 | .863 | 93 | 224 | 317 | 11.7 | 56 | 1 | 33 | 56 | 36 | 33 | 359 | 13.3 |
| 04 | Jenerette, Kayla | 27-3 | 589 | 21.8 | 114-236 | .483 | 50-106 | .472 | 60-82 | .732 | 20 | 50 | 70 | 2.6 | 42 | 0 | 65 | 59 | 0 | 55 | 338 | 12.5 |
| 11 | Hurley, Rachel | 28-28 | 854 | 30.5 | 124-294 | .422 | 55-137 | .401 | 43-51 | .843 | 25 | 66 | 91 | 3.3 | 36 | 0 | 87 | 54 | 2 | 33 | 346 | 12.4 |
| 23 | Cayton, Kara | 26-26 | 685 | 26.3 | 82-196 | .418 | 66-159 | .415 | 10-14 | .714 | 14 | 44 | 58 | 2.2 | 37 | 0 | 79 | 51 | 3 | 35 | 240 | 9.2 |
| 21 | Miller, Lydia | 28-28 | 792 | 28.3 | 102-244 | .418 | 34-92 | .370 | 14-17 | .824 | 53 | 75 | 128 | 4.6 | 69 | 1 | 79 | 66 | 4 | 21 | 252 | 9.0 |
| 33 | Chandler, Deborah | 27-1 | 492 | 18.2 | 54-159 | .340 | 3-15 | .200 | 41-57 | .719 | 26 | 76 | 102 | 3.8 | 61 | 0 | 18 | 36 | 7 | 11 | 152 | 5.6 |
| 15 | Brooks, Caitlyn | 28-24 | 543 | 19.4 | 62-152 | .408 | 3-16 | .188 | 26-33 | .788 | 35 | 67 | 102 | 3.6 | 47 | 1 | 36 | 40 | 11 | 26 | 153 | 5.5 |
| 05 | Orchard, Becky | 27-0 | 441 | 16.3 | 50-125 | .400 | 28-76 | .368 | 11-17 | .647 | 20 | 50 | 70 | 2.6 | 39 | 1 | 39 | 38 | 8 | 20 | 139 | 5.1 |
| 22 | Smith, Jenna | 23-3 | 267 | 11.6 | 41-81 | .506 | 0-0 | .000 | 9-17 | .529 | 21 | 52 | 73 | 3.2 | 24 | 0 | 9 | 15 | 6 | 7 | 91 | 4.0 |
| 14 | Ansiel, Heidi | 16-0 | 111 | 6.9 | 8-27 | .296 | 1-2 | .500 | 3-5 | .600 | 2 | 13 | 15 | 0.9 | 12 | 0 | 11 | 6 | 2 | 3 | 20 | 1.3 |
| 20 | Williams, Jenna | 6-0 | 25 | 4.2 | 2-4 | .500 | 0-1 | .000 | 2-3 | .667 | 2 | 5 | 7 | 1.2 | 1 | 0 | 1 | 0 | 0 | 1 | 6 | 1.0 |
| 30 | Jakucki, Kathy | 4-0 | 18 | 4.5 | 1-3 | .333 | 0-0 | .000 | 0-1 | .000 | 0 | 1 | 1 | 0.3 | 4 | 0 | 0 | 2 | 0 | 0 | 2 | 0.5 |
| Team | | | | | | | | | | | 40 | 88 | 128 | | | | | | | 11 | | |
| Total..... | | 28 | 5600 | | 769-1758 | .437 | 240-604 | .397 | 320-414 | .773 | 351 | 811 | 1162 | 41.5 | 428 | 4 | 457 | 434 | 79 | 245 | 2098 | 74.9 |
| Opponents..... | | 28 | 5600 | | 608-1657 | .367 | 156-538 | .290 | 349-496 | .704 | 327 | 692 | 1019 | 36.4 | 398 | 3 | 343 | 486 | 69 | 216 | 1721 | 61.5 |

Dale's TRUCK PARTS INC.

2891 U.S. 42 East • Cedarville, OH
1-800-848-3589

RAMADA
WORLDWIDE

(937) 372-9921

Proud sponsors of
Yellow Jacket Basketball

"Please ask about our
Cedarville University
rate"

300 Xenia Town Square
Xenia, Ohio 43585



2010-11 Wilberforce University Basketball Statistics

| RECORD: | OVERALL | HOME | AWAY | NEUTRAL |
|---------------------|---------|-------|--------|---------|
| ALL GAMES..... | (3-26) | (2-8) | (1-14) | (0-4) |
| CONFERENCE..... | (1-13) | (0-7) | (1-6) | (0-0) |
| NON-CONFERENCE..... | (2-13) | (2-1) | (0-8) | (0-4) |

| # | Player | GP-GS | Avg Min | ---TOTAL--- | | ---3-PTS--- | | FT-FTA | Pct | ---REBOUNDS--- | | | | PF | FO | A | TO | Blk | Stl | Pts | Avg | |
|----------------|----------------------|-------|---------|-------------|------|-------------|------|---------|-------|----------------|------|------|------|-----|----|-----|-----|-----|-----|------|------|--|
| | | | | FG-FGA | Pct | 3FG-FGA | Pct | | | Off | Def | Tot | Avg | | | | | | | | | |
| 24 | Lewis, Danielle..... | 29-29 | 35.6 | 141-425 | .332 | 21-89 | .236 | 82-126 | .651 | 27 | 73 | 100 | 3.4 | 38 | 0 | 93 | 99 | 3 | 42 | 385 | 13.3 | |
| 21 | Smith, Andrecia..... | 29-27 | 33.2 | 102-313 | .326 | 59-191 | .309 | 33-46 | .717 | 29 | 65 | 94 | 3.2 | 66 | 1 | 48 | 79 | 2 | 27 | 296 | 10.2 | |
| 11 | Brown, Danisha..... | 29-24 | 33.1 | 111-324 | .343 | 30-110 | .273 | 22-40 | .550 | 50 | 52 | 102 | 3.5 | 52 | 1 | 18 | 49 | 2 | 45 | 274 | 9.4 | |
| 34 | Roberts, Tiara..... | 28-26 | 28.3 | 101-343 | .294 | 22-98 | .224 | 45-105 | .429 | 62 | 126 | 188 | 6.7 | 77 | 3 | 38 | 65 | 13 | 34 | 269 | 9.6 | |
| 23 | Hall, De'Andra..... | 29-4 | 14.3 | 58-153 | .379 | 3-10 | .300 | 44-79 | .557 | 35 | 46 | 81 | 2.8 | 44 | 1 | 13 | 27 | 2 | 19 | 163 | 5.6 | |
| 2 | Rucker, Angelica.... | 28-15 | 22.3 | 44-151 | .291 | 18-66 | .273 | 28-46 | .609 | 35 | 76 | 111 | 4.0 | 58 | 1 | 35 | 45 | 0 | 18 | 134 | 4.8 | |
| 32 | Fontes, Keeahna..... | 15-4 | 20.3 | 39-119 | .328 | 7-27 | .259 | 21-33 | .636 | 26 | 30 | 56 | 3.7 | 32 | 1 | 3 | 25 | 15 | 5 | 106 | 7.1 | |
| 25 | Thomas, Amira..... | 29-14 | 16.9 | 30-105 | .286 | 0-1 | .000 | 30-39 | .769 | 60 | 128 | 188 | 6.5 | 71 | 1 | 2 | 21 | 14 | 15 | 90 | 3.1 | |
| 22 | Wright, Jasmin..... | 9-2 | 10.6 | 9-25 | .360 | 2-5 | .400 | 4-7 | .571 | 9 | 10 | 19 | 2.1 | 6 | 0 | 5 | 10 | 1 | 8 | 24 | 2.7 | |
| 3 | Crawford, Rebecca... | 12-1 | 8.3 | 2-14 | .143 | 0-1 | .000 | 2-2 | 1.000 | 3 | 6 | 9 | 0.8 | 7 | 0 | 4 | 5 | 0 | 2 | 6 | 0.5 | |
| 1 | Applewhite, Kyla.... | 10-0 | 5.2 | 1-7 | .143 | 0-3 | .000 | 0-0 | .000 | 2 | 3 | 5 | 0.5 | 8 | 0 | 1 | 6 | 0 | 0 | 2 | 0.2 | |
| TM TEAM..... | | | | | | | | | | | 83 | 96 | 179 | 6.6 | 0 | | | | | 22 | | |
| Total..... | | 29 | | 638-1979 | .322 | 162-601 | .270 | 311-523 | .595 | 421 | 711 | 1132 | 39.0 | 459 | 9 | 260 | 453 | 52 | 215 | 1749 | 60.3 | |
| Opponents..... | | 29 | | 934-1991 | .469 | 168-498 | .337 | 379-571 | .664 | 442 | 1048 | 1490 | 51.4 | 459 | - | 571 | 484 | 124 | 210 | 2415 | 83.3 | |

Cedarville University "Lady Jackets" 21-7 (11-3)



HEAD COACH: KIRK MARTIN (10th year, 266-65, .804)
 ASSISTANT COACHES: KARI FLUNKER, STACIE TRAVIS

| No | Player | Pos | Ht | Yr | Hometown | 3-Pt. FG | 2-Pt. FG | Free Throws | Fouls | 3FG | 2FG | FT | TP |
|----|------------------|-----|------|----|-------------------|----------|--------------|--------------|-------|-----|-----|----|----|
| 4 | Kayla Jenerette | G | 5-5 | Fr | Greenville, SC | 3333333 | 222222222222 | 111111111111 | 12345 | | | | |
| 5 | Becky Orchard | G | 5-10 | Fr | Loudonville, OH | 3333333 | 222222222222 | 111111111111 | 12345 | | | | |
| 11 | Rachel Hurley | G | 5-4 | Sr | Indiana, PA | 3333333 | 222222222222 | 111111111111 | 12345 | | | | |
| 12 | Aubrey Siemon | C | 6-1 | Sr | Springfield, OH | 3333333 | 222222222222 | 111111111111 | 12345 | | | | |
| 14 | Heidi Ansiel | G | 5-7 | Fr | Warrenville, IL | 3333333 | 222222222222 | 111111111111 | 12345 | | | | |
| 15 | Caitlyn Brooks | F | 6-0 | Sr | Centerville, OH | 3333333 | 222222222222 | 111111111111 | 12345 | | | | |
| 20 | Jenna Williams | F | 5-8 | Fr | Xenia, OH | 3333333 | 222222222222 | 111111111111 | 12345 | | | | |
| 21 | Lydia Miller | G | 5-7 | Sr | Berlin, OH | 3333333 | 222222222222 | 111111111111 | 12345 | | | | |
| 22 | Jenna Smith | C | 6-2 | Sr | Cedarville, OH | 3333333 | 222222222222 | 111111111111 | 12345 | | | | |
| 23 | Kara Cayton | G | 5-4 | Jr | South Webster, OH | 3333333 | 222222222222 | 111111111111 | 12345 | | | | |
| 30 | Kathy Jakucki | F | 5-11 | Jr | Vineland, NJ | 3333333 | 222222222222 | 111111111111 | 12345 | | | | |
| 33 | Deborah Chandler | F | 6-0 | Fr | Southlake, TX | 3333333 | 222222222222 | 111111111111 | 12345 | | | | |
| | | | | | | 3333333 | 222222222222 | 111111111111 | 12345 | | | | |



One mile north of
Yellow Springs
on Route 68

OPEN 7 AM TO 10 PM
EVERY DAY

937-325-0629



Beaver Valley Shopping Center
 3245 Seajay Drive, Beavercreek, Ohio
 45430

937-426-0060
www.lofinos.com

Wilberforce University "Bulldogs" 3-26 (1-13)



HEAD COACH: IESHA GRAY

| No | Player | Pos | Ht | Yr | Hometown | 3-Pt. FG | 2-Pt. FG | Free Throws | Fouls | 3FG | 2FG | FT | TP |
|----|------------------|-----|------|----|----------------------|----------|--------------|--------------|-------|-----|-----|----|----|
| 1 | Kyla Applewhite | G | 5-7 | So | Sterling Heights, MI | 3333333 | 222222222222 | 111111111111 | 12345 | | | | |
| 2 | Angelica Rucker | G | 5-7 | Jr | Shawnee, KS | 3333333 | 222222222222 | 111111111111 | 12345 | | | | |
| 3 | Rebecca Crawford | G | 5-6 | Jr | Baltimore, MD | 3333333 | 222222222222 | 111111111111 | 12345 | | | | |
| 11 | Danisha Brown | G | 5-8 | Fr | Toledo, OH | 3333333 | 222222222222 | 111111111111 | 12345 | | | | |
| 21 | Andreacia Smith | G | 5-7 | Sr | Grand Rapids, MI | 3333333 | 222222222222 | 111111111111 | 12345 | | | | |
| 22 | Jasmin Wright | G | 5-7 | Fr | Cincinnati, OH | 3333333 | 222222222222 | 111111111111 | 12345 | | | | |
| 23 | De'Andra Hall | G | 5-5 | So | Columbus, OH | 3333333 | 222222222222 | 111111111111 | 12345 | | | | |
| 24 | Danielle Lewis | G | 5-5 | Jr | Toledo, OH | 3333333 | 222222222222 | 111111111111 | 12345 | | | | |
| 25 | Amira Thomas | F | 5-11 | Fr | Cleveland, OH | 3333333 | 222222222222 | 111111111111 | 12345 | | | | |
| 32 | Keeahna Fontes | F | 5-9 | So | Columbus, OH | 3333333 | 222222222222 | 111111111111 | 12345 | | | | |
| 34 | Tiara Roberts | F | 5-10 | Jr | Toledo, OH | 3333333 | 222222222222 | 111111111111 | 12345 | | | | |
| | | | | | | 3333333 | 222222222222 | 111111111111 | 12345 | | | | |



American Mid-east Conference Schedules/Results

CARLOW (1-13)

| | | |
|-------|-------------------|----------|
| 11/9 | NOTRE DAME | L 74-47 |
| 11/23 | DAEMEN | L 79-60 |
| 12/4 | HOUGHTON | W 58-55 |
| 12/11 | at Houghton | L 80-51 |
| 1/4 | POINT PARK | L 64-44 |
| 1/7 | at Daemen | L 88-50 |
| 1/8 | at Robt. Wes. | L 79-62 |
| 1/15 | WILBERFORCE | L 55-44 |
| 1/18 | at Walsh | L 102-49 |
| 1/21 | at Cedarville | L 86-37 |
| 1/22 | at Mt. Vern. Naz. | L 92-44 |
| 1/29 | URSULINE | L 73-58 |
| 2/5 | at Malone | L 80-50 |
| 2/12 | at Point Park | L 74-36 |
| 2/15 | WALSH | 7:30 pm |
| 2/19 | ROBT. WES. | 2 pm |

CEDARVILLE (11-3)

| | | |
|-------|-------------------|---------|
| 11/30 | MALONE | W 80-42 |
| 12/4 | URSULINE | W 98-49 |
| 12/7 | at Wilberforce | W 67-46 |
| 1/4 | MT. VERN. NAZ. | W 78-50 |
| 1/15 | at Point Park | W 70-59 |
| 1/21 | CARLOW | W 86-37 |
| 1/22 | WALSH | L 70-53 |
| 1/28 | at Houghton | W 70-61 |
| 1/29 | at Daemen | L 68-66 |
| 2/3 | at Malone | W 95-63 |
| 2/5 | ROBT. WES. | W 64-62 |
| 2/8 | at Ursuline | W 64-57 |
| 2/10 | at Notre Dame | W 57-55 |
| 2/12 | at Mt. Vern. Naz. | L 74-63 |
| 2/15 | WILBERFORCE | 5:30 pm |
| 2/19 | NOTRE DAME | 5:30 pm |

DAEMEN (12-2)

| | | |
|-------|----------------|---------|
| 11/23 | at Carlow | W 79-60 |
| 12/4 | WALSH | W 68-66 |
| 12/7 | at Robt. Wes. | W 75-58 |
| 1/4 | HOUGHTON | W 70-63 |
| 1/7 | CARLOW | W 88-50 |
| 1/11 | POINT PARK | W 95-58 |
| 1/15 | NOTRE DAME | W 53-49 |
| 1/21 | at Ursuline | W 75-49 |
| 1/22 | at Malone | W 74-49 |
| 1/28 | MT. VERN. NAZ. | L 86-81 |
| 1/29 | CEDARVILLE | W 68-66 |
| 2/5 | at Wilberforce | W 83-55 |
| 2/8 | at Walsh | L 74-62 |
| 2/12 | at Houghton | W 85-78 |
| 2/15 | ROBT. WES. | 5:30 pm |
| 2/19 | at Point Park | 2 pm |

HOUGHTON (5-8)

| | | |
|-------|-------------------|---------|
| 11/16 | at Robt. Wes. | L 76-61 |
| 12/4 | at Carlow | L 58-55 |
| 12/7 | at Point Park | L 59-47 |
| 12/11 | CARLOW | W 80-51 |
| 1/4 | at Daemen | L 70-63 |
| 1/11 | WALSH | L 72-66 |
| 1/15 | URSULINE | W 74-51 |
| 1/21 | at Malone | W 64-53 |
| 1/22 | at Notre Dame | L 81-53 |
| 1/28 | CEDARVILLE | L 70-61 |
| 1/29 | WILBERFORCE | W 82-60 |
| 2/5 | at Mt. Vern. Naz. | W 71-60 |
| 2/12 | DAEMEN | L 85-78 |
| 2/15 | POINT PARK | 6 pm |
| 2/17 | ROBT. WES. | 8 pm |
| 2/19 | at Walsh | 2 pm |

MALONE (4-10)

| | | |
|-------|-------------------|---------|
| 11/30 | at Cedarville | L 80-42 |
| 12/4 | WILBERFORCE | W 84-57 |
| 1/4 | URSULINE | L 56-49 |
| 1/8 | at Notre Dame | L 89-48 |
| 1/12 | MT. VERN. NAZ. | L 87-53 |
| 1/15 | at Robt. Wes. | L 82-50 |
| 1/21 | HOUGHTON | L 64-53 |
| 1/22 | DAEMEN | L 74-49 |
| 1/27 | at Point Park | W 55-53 |
| 1/29 | at Walsh | L 67-36 |
| 2/3 | CEDARVILLE | L 95-63 |
| 2/5 | CARLOW | W 80-50 |
| 2/8 | at Wilberforce | W 80-76 |
| 2/12 | at Ursuline | L 93-76 |
| 2/15 | WALSH | 7 pm |
| 2/19 | at Mt. Vern. Naz. | 2 pm |

MT. VERNON NAZ. (9-5)

| | | |
|-------|----------------|---------|
| 11/22 | at Wilberforce | W 87-62 |
| 12/4 | NOTRE DAME | L 69-60 |
| 12/14 | at Ursuline | W 81-61 |
| 1/4 | at Cedarville | L 78-50 |
| 1/12 | at Malone | W 87-53 |
| 1/15 | at Walsh | L 63-45 |
| 1/21 | POINT PARK | W 74-59 |
| 1/22 | CARLOW | W 92-44 |
| 1/28 | at Daemen | W 86-81 |
| 1/29 | at Robt. Wes. | L 77-46 |
| 2/3 | at Wilberforce | W 87-59 |
| 2/5 | HOUGHTON | L 71-60 |
| 2/8 | at Notre Dame | W 83-64 |
| 2/12 | CEDARVILLE | W 74-63 |
| 2/15 | URSULINE | 5:30 pm |
| 2/19 | MALONE | 2 pm |

NOTRE DAME OH (10-4)

| | | |
|-------|-------------------|----------|
| 11/9 | at Carlow | W 74-47 |
| 11/30 | URSULINE | W 87-65 |
| 12/4 | at Mt. Vern. Naz. | W 69-60 |
| 1/4 | at Wilberforce | W 91-47 |
| 1/8 | MALONE | W 89-48 |
| 1/15 | at Daemen | L 53-49 |
| 1/21 | ROBT. WES. | W 88-78 |
| 1/22 | HOUGHTON | W 81-53 |
| 1/29 | at Point Park | W 79-74 |
| 2/1 | at Ursuline | W 80-53 |
| 2/5 | WALSH | L 100-68 |
| 2/8 | MT. VERN. NAZ. | L 83-64 |
| 2/10 | CEDARVILLE | L 57-55 |
| 2/12 | WILBERFORCE | W 94-69 |
| 2/15 | at Malone | 5:30 pm |
| 2/19 | at Cedarville | 5:30 pm |

POINT PARK (5-9)

| | | |
|-------|-------------------|---------|
| 11/30 | WALSH | L 70-63 |
| 12/7 | HOUGHTON | W 59-47 |
| 1/4 | at Carlow | W 64-44 |
| 1/11 | at Daemen | L 95-58 |
| 1/15 | CEDARVILLE | L 70-59 |
| 1/18 | ROBT. WES. | L 70-43 |
| 1/21 | at Mt. Vern. Naz. | L 74-59 |
| 1/22 | at Wilberforce | W 63-52 |
| 1/27 | MALONE | L 55-53 |
| 1/29 | NOTRE DAME | L 79-74 |
| 2/1 | at Walsh | L 68-48 |
| 2/5 | at Ursuline | W 79-47 |
| 2/8 | at Robt. Wes. | L 64-29 |
| 2/12 | CARLOW | W74-36 |
| 2/15 | at Houghton | 6 pm |
| 2/19 | DAEMEN | 2 pm |

ROBT. WESLEYAN (8-5)

| | | |
|-------|----------------|---------|
| 11/16 | HOUGHTON | W 76-61 |
| 12/7 | DAEMEN | L 75-58 |
| 1/4 | at Walsh | L 88-66 |
| 1/8 | CARLOW | W 79-62 |
| 1/15 | MALONE | W 82-50 |
| 1/18 | at Point Park | W 70-43 |
| 1/21 | at Notre Dame | L 88-78 |
| 1/22 | at Ursuline | W 72-57 |
| 1/28 | WILBERFORCE | W 73-32 |
| 1/29 | MT. VERN. NAZ. | W 77-46 |
| 2/5 | at Cedarville | L 64-62 |
| 2/8 | POINT PARK | W 64-29 |
| 2/12 | WALSH | L 64-49 |
| 2/15 | at Daemen | 5:30 pm |
| 2/17 | at Houghton | 8 pm |
| 2/19 | at Carlow | 2 pm |

URSULINE (4-10)

| | | |
|-------|-------------------|---------|
| 11/30 | at Notre Dame | L 87-65 |
| 12/4 | at Cedarville | L 98-49 |
| 12/14 | MT. VERN. NAZ. | L 81-61 |
| 1/4 | at Malone | W 56-49 |
| 1/11 | WILBERFORCE | W 76-73 |
| 1/15 | at Houghton | L 74-51 |
| 1/21 | DAEMEN | L 75-49 |
| 1/22 | ROBT. WES. | L 72-57 |
| 1/27 | at Walsh | L 87-57 |
| 1/29 | at Carlow | W 73-58 |
| 2/1 | NOTRE DAME | L 80-53 |
| 2/5 | POINT PARK | L 79-47 |
| 2/8 | CEDARVILLE | L 64-57 |
| 2/12 | MALONE | W 93-76 |
| 2/15 | at Mt. Vern. Naz. | 5:30 pm |
| 2/19 | at Wilberforce | 2 pm |

Your ad here?

Promote your business!

Contact
Jeff Bolender
at
937-766-4136

WALSH (13-1)

| | | |
|-------|----------------|----------|
| 11/30 | at Point Park | W 70-63 |
| 12/4 | at Daemen | L 68-66 |
| 1/4 | ROBT. WES. | W 88-66 |
| 1/11 | at Houghton | W 72-66 |
| 1/15 | MT. VERN. NAZ. | W 63-45 |
| 1/18 | CARLOW | W 102-49 |
| 1/22 | at Cedarville | W 70-53 |
| 1/25 | at Wilberforce | W 111-57 |
| 1/27 | URSULINE | W 87-57 |
| 1/29 | MALONE | W 67-36 |
| 2/1 | POINT PARK | W 68-48 |
| 2/5 | at Notre Dame | W 100-68 |
| 2/8 | DAEMEN | W 74-62 |
| 2/12 | at Robt. Wes. | W 64-49 |
| 2/15 | at Carlow | 7:30 pm |
| 2/19 | HOUGHTON | 2 pm |

OTHER GAMES TONIGHT
in the AMC

ROBT. WESLEYAN at DAEMEN, 5:30 pm

NOTRE DAME at MALONE, 5:30 pm

URSULINE at MT. VERNON NAZ., 5:30 pm

POINT PARK at HOUGHTON, 6 pm

WALSH at CARLOW, 7:30 pm


AMERICAN MIDEAST CONFERENCE

WILBERFORCE (1-13)

| | | |
|-------|-------------------|----------|
| 11/22 | at Mt. Vern. Naz. | L 87-62 |
| 12/4 | at Malone | L 84-57 |
| 12/7 | CEDARVILLE | L 67-46 |
| 1/4 | NOTRE DAME | L 91-47 |
| 1/11 | at Ursuline | L 76-73 |
| 1/15 | at Carlow | W 55-44 |
| 1/22 | POINT PARK | L 63-52 |
| 1/25 | WALSH | L 111-57 |
| 1/28 | at Robt. Wes. | L 73-32 |
| 1/29 | at Houghton | L 82-60 |
| 2/3 | MT. VERN. NAZ. | L 87-59 |
| 2/5 | DAEMEN | L 83-55 |
| 2/8 | MALONE | L 80-76 |
| 2/12 | at Notre Dame | L 94-69 |
| 2/15 | at Cedarville | 5:30 pm |
| 2/19 | URSULINE | 2 pm |

CRELLIN PLUMBING

QUALITY SERVICE for 50 YEARS 1960 - 2010



"A broken cistern cannot hold water."
Jeremiah 2:13

(937) 325-8006

AMC Women's Basketball Standings

| | AMC | | | OVERALL | | | H | A | N | Streak |
|---------------------|-----------|-----------|-------------|-----------|-----------|-------------|------------|-------------|------------|-----------|
| | W | L | Pct. | W | L | Pct. | | | | |
| Walsh | 13 | 1 | .929 | 22 | 4 | .846 | 10-3 | 12-1 | 0-0 | W17 |
| Daemen | 12 | 2 | .857 | 22 | 5 | .815 | 12-2 | 7-3 | 3-0 | W1 |
| CEDARVILLE | 11 | 3 | .786 | 21 | 7 | .750 | 9-3 | 10-4 | 2-0 | L1 |
| Notre Dame | 10 | 4 | .714 | 20 | 8 | .714 | 9-5 | 8-2 | 3-1 | W1 |
| Mt. Vernon Nazarene | 9 | 5 | .643 | 18 | 7 | .720 | 8-2 | 10-4 | 0-1 | W2 |
| Roberts Wesleyan | 8 | 5 | .615 | 15 | 10 | .600 | 12-5 | 3-4 | 0-1 | L1 |
| Houghton | 5 | 8 | .385 | 10 | 13 | .435 | 8-5 | 2-8 | 0-0 | L1 |
| Point Park | 5 | 9 | .357 | 13 | 12 | .520 | 7-5 | 5-6 | 1-1 | W1 |
| Malone | 4 | 10 | .286 | 8 | 19 | .296 | 2-6 | 5-11 | 1-2 | L1 |
| Ursuline | 4 | 10 | .286 | 7 | 21 | .250 | 5-9 | 2-9 | 0-3 | W1 |
| Carlow | 1 | 13 | .071 | 7 | 16 | .304 | 2-6 | 3-10 | 2-0 | L8 |
| Wilberforce | 1 | 13 | .071 | 3 | 26 | .103 | 2-8 | 1-14 | 0-4 | L6 |

SUBWAY

eat fresh.

**13 E. Chillicothe St.,
Cedarville, OH**

766-7299

"We Back the Jackets!"



Houghton's Dupler is Player of the Week

CEDARVILLE, Ohio - Houghton center Ashley Dupler has been selected the AMC Women's Basketball Player of the Week for her effort in games played on Jan. 31 through Feb. 6.

Dupler, a 6-foot-1 senior from Jamestown, N.Y., totaled 21 points, seven rebounds, and three blocked shots to lead the Highlanders to a 71-60 AMC victory at Mount Vernon Nazarene. The outcome avenged an 81-73 non-conference overtime setback to the Cougars earlier in the season at home.

Dupler made 10-of-13 shots from the field to go along with one free throw. She added one assist and one steal.

Houghton is 10-12 overall and 5-7 AMC.



Ashley Dupler

Other Player of the Week nominees:

April Austin (Point Park), Cara Bedard (Walsh), Chanel Berry (Carlow), Sierra Fletcher (Mount Vernon Nazarene), **Rachel Hurley (Cedarville)**, Amy Kittle (Malone), Tracy Payne (Notre Dame), Sarah Soroka (Daemen).

ANDERSON-WILLIAMSON INSURANCE AGENCY, LLC

HOME AUTO FARM BUSINESS HEALTH LIFE

Safeco Insurance™

Member of Liberty Mutual Group

(937) 372-4491

WWW.AWXENIA.COM



ESTABLISHED 1802

(937) 767-5501

75 Water Street, Clifton, Ohio

www.cliftonmill.com



thru Feb. 12, 2011

SCORING

| Player-Team | Yr | G | FG | 3FG | FT | Pts | Avg |
|-----------------------|----|----|-----|-----|-----|-----|------|
| Soroka, Sarah-DAE | SR | 25 | 227 | 36 | 103 | 593 | 23.7 |
| Himes, Amanda-MVN | SR | 23 | 154 | 0 | 96 | 404 | 17.6 |
| Miller, Jessie-WAL | SR | 13 | 79 | 27 | 38 | 223 | 17.2 |
| Henderson, Ashley-PPU | SR | 24 | 131 | 30 | 118 | 410 | 17.1 |
| Dupler, Ashley-HOU | SR | 22 | 150 | 0 | 56 | 356 | 16.2 |
| Kittle, Amy-MAL | SR | 24 | 103 | 39 | 98 | 343 | 14.3 |
| Lewis, Danielle-WIL | JR | 28 | 139 | 21 | 80 | 379 | 13.5 |
| Burke, Bridgette-DAE | SR | 25 | 126 | 35 | 47 | 334 | 13.4 |
| Siemon, Aubrey-CED | SR | 25 | 119 | 0 | 93 | 331 | 13.2 |
| Berry, Katie-WAL | SR | 25 | 119 | 18 | 73 | 329 | 13.2 |



Sarah Soroka

REBOUNDING

| Player-Team | Yr | G | OFF | DEF | TOT | Avg/G |
|------------------------|----|----|-----|-----|-----|-------|
| Himes, Amanda-MVN | SR | 23 | 110 | 159 | 269 | 11.7 |
| Siemon, Aubrey-CED | SR | 25 | 82 | 209 | 291 | 11.6 |
| Lindsey, Danielle-CAR | SO | 14 | 36 | 123 | 159 | 11.4 |
| Dupler, Ashley-HOU | SR | 22 | 68 | 151 | 219 | 10.0 |
| Burke, Bridgette-DAE | SR | 25 | 44 | 176 | 220 | 8.8 |
| Soroka, Sarah-DAE | SR | 25 | 60 | 160 | 220 | 8.8 |
| Wilson, Allyson-MAL | SR | 26 | 67 | 143 | 210 | 8.1 |
| Peterkin, Joncelyn-PPU | JR | 24 | 83 | 106 | 189 | 7.9 |
| Taylor, Jaylene-URS | FR | 27 | 68 | 136 | 204 | 7.6 |
| McNally, Kealy-NDC | SR | 24 | 51 | 113 | 164 | 6.8 |



Amanda Himes

FIELD GOAL PCT. (min. 4 made per game)

| Player-Team | Yr | G | FG | FGA | Pct |
|------------------------|----|----|-----|-----|------|
| Bedard, Cara-WAL | SR | 24 | 121 | 213 | .568 |
| Siemon, Aubrey-CED | SR | 25 | 119 | 220 | .541 |
| Burke, Bridgette-DAE | SR | 25 | 126 | 238 | .529 |
| Soroka, Sarah-DAE | SR | 25 | 227 | 440 | .516 |
| Miller, Jessie-WAL | SR | 13 | 79 | 158 | .500 |
| Hunter, Yvette-NDC | SR | 25 | 127 | 256 | .496 |
| Jenerette, Kayla-CED | FR | 25 | 110 | 223 | .493 |
| Dupler, Ashley-HOU | SR | 22 | 150 | 317 | .473 |
| McMillon, Brittany-RWC | SR | 23 | 108 | 230 | .470 |
| Taylor, Jaylene-URS | FR | 27 | 125 | 271 | .461 |



Cara Bedard

ASSISTS

| Player-Team | Yr | G | Assists | Avg/G |
|-----------------------|----|----|---------|-------|
| Nugent, Marybeth-DAE | SR | 25 | 123 | 4.92 |
| Fletcher, Sierra-MVN | JR | 24 | 101 | 4.21 |
| Wilson, Tiffany-RWC | SR | 21 | 81 | 3.86 |
| Berry, Katie-WAL | SR | 25 | 90 | 3.60 |
| Austin, April-PPU | SO | 24 | 85 | 3.54 |
| Berry, Chanel-CAR | FR | 21 | 73 | 3.48 |
| Lewis, Danielle-WIL | JR | 28 | 89 | 3.18 |
| Cayton, Kara-CED | JR | 24 | 75 | 3.12 |
| Hurley, Rachel-CED | SR | 26 | 80 | 3.08 |
| Henderson, Ashley-PPU | FR | 24 | 71 | 2.96 |



Marybeth Nugent

FREE THROW PCT. (min. 2 made per game)

| Player-Team | Yr | G | FTM | FTA | Pct |
|-------------------------|----|----|-----|-----|------|
| Miller, Jessie-WAL | SR | 13 | 38 | 41 | .927 |
| Harkins, Alexis-MVN | JR | 24 | 58 | 65 | .892 |
| Ciccarone, Daniella-WAL | FR | 25 | 64 | 73 | .877 |
| Siemon, Aubrey-CED | SR | 25 | 93 | 108 | .861 |
| Berry, Katie-WAL | SR | 25 | 73 | 92 | .793 |
| Kittle, Amy-MAL | SR | 24 | 98 | 125 | .784 |
| Fletcher, Sierra-MVN | JR | 24 | 65 | 83 | .783 |
| Kovach, Kayla-WAL | JR | 25 | 54 | 70 | .771 |
| Payne, Tracy-NDC | SO | 24 | 59 | 77 | .766 |
| Henderson, Ashley-PPU | SR | 24 | 118 | 158 | .747 |



Jessie Miller

STEALS

| Player-Team | Yr | G | Steals | Avg/G |
|-------------------------|----|----|--------|-------|
| Fletcher, Sierra-MVN | JR | 24 | 73 | 3.04 |
| Wilson, Tiffany-RWC | SR | 21 | 58 | 2.76 |
| Berry, Katie-WAL | SR | 25 | 63 | 2.52 |
| Henderson, Ashley-PPU | SR | 24 | 60 | 2.50 |
| Austin, April-PPU | SO | 24 | 57 | 2.38 |
| Johnson, Lauren-MVN | SR | 23 | 51 | 2.22 |
| McMillon, Brittany-RWC | SR | 23 | 49 | 2.13 |
| Jenerette, Kayla-CED | FR | 25 | 51 | 2.04 |
| Wicks, Taryn-NDC | JR | 13 | 24 | 1.85 |
| Bellinger, Cynnetha-RWC | SR | 24 | 44 | 1.83 |



Sierra Fletcher



Miller Printing Co.

PRINTERS & LITHOGRAPHERS

Cedarville University Sales Representative
Bill Thompson 1-877-325-5503

From the Simplest Black and White Page To The Most
Complex and Colorful Brochure Or Catalog

WE DO IT ALL!



581 W. Leffel Lane • 937-325-5503
A UNIT OF GRAPHIC PAPER PRODUCTS CORP.

WALLACE & TURNER, INC.



INSURANCE—SINCE 1870

616 N. LIMESTONE ST.
SPRINGFIELD, OHIO 45503

937-324-8492



Fresh Pure Chemical Free
Drinking Water

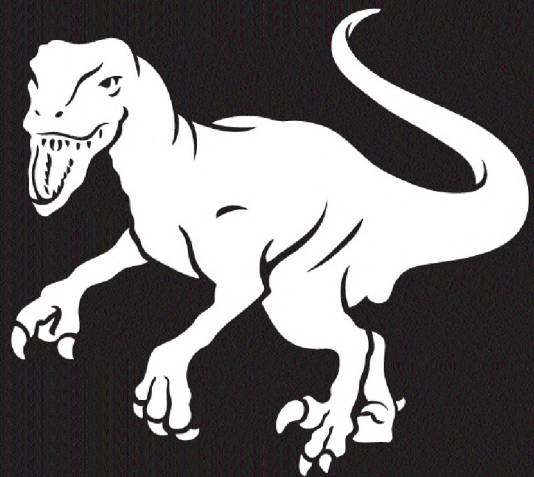
Aqua Falls®

Free Delivery Home & Office

1-800-800-8124

Complimentary Trial Offer

- Cooler & Dispenser
- Sales & Rental



creationmuseum.org

CEDARVILLE SELF STORAGE

Located at 31 S. Miller St.
Cedarville, OH 45314

937-766-9780

Rollins Moving & Storage



OHIO MOVING
SAME OR NEXT DAY DELIVERY

"MOVERS FOR THREE GENERATIONS"

National
& World-wide
pre-planned
moving

Rollins for Moving

LOCAL • NATIONWIDE • WORLDWIDE WITH THE
SAME QUALITY SERVICE
PROFESSIONAL PACKING & CRATING

Rollins for Storage

WE INVITE YOU TO INSPECT OUR WAREHOUSE
FULLY INSURED CONTAINERIZED STORAGE

Rollins for Care

FULL VALUE PROTECTION

1-800-826-8094

Season Top 10 Leaders



Points

- 967 Brittany Smart, 2006-07
- 890 Brittany Smart, 2005-06
- 805 Brittany Smart, 2004-05
- 743 Vicki Butler, 1979-80
- 714 Kirsten Rossotti, 2002-03
- 667 Amy Zehr, 1992-93
- 663 Kari Flunker, 2004-05
- 662 Kari Flunker, 2003-04
- 642 Kirsten Rossotti, 2001-02
- 574 Brittany Smart, 2003-04

Scoring Average

- 28.4 Brittany Smart, 2006-07
- 27.5 Vicki Butler, 1979-80
- 27.0 Brittany Smart, 2005-06
- 24.7 Amy Zehr, 1991-92
- 23.9 Vicki Butler, 1978-79
- 21.8 Brittany Smart, 2004-05
- 21.0 Kirsten Rossotti, 2002-03
- 19.7 Vicki Butler, 1977-78
- 19.5 Kirsten Rossotti, 2001-02
- 18.7 Diane Rank, 1991-92

Field Goals Made

- 333 Brittany Smart, 2006-07
- 323 Brittany Smart, 2005-06
- 318 Brittany Smart, 2004-05
- 279 Vicki Butler, 1979-80
- 274 Amy Zehr, 1992-93
- 258 Kirsten Rossotti, 2002-03
- 249 Kari Flunker, 2004-05
- 234 Kari Flunker, 2003-04
- 229 Kirsten Rossotti, 2001-02
- 218 Diane Rank, 1991-92

Field Goal Pct. (4 FGM/G)

- .602 Lisa Campbell (168-279), 1983-84
- .601 Amy Zehr (274-456), 1992-93
- .600 Amy Zehr (153-255), 1990-91
- .584 Julie Nourse (142-243), 1997-98
- .584 Julie Nourse (202-346), 1998-99
- .570 Brittany Smart (318-558), 2004-05
- .562 Kristi Beougher (146-260), 2006-07
- .544 Amy Bathrick (143-263), 1996-97
- .542 Kari Flunker (249-459), 2004-05
- .538 Diane Rank (218-405), 1991-92
- .538 Kirsten Rossotti (164-305), 1998-99

3-Point Field Goals Made

- 99 Kari Flunker, 2003-04
- 95 Kari Flunker, 2004-05
- 82 Brittany Smart, 2006-07
- 78 Brittany Smart, 2005-06
- 74 Kari Flunker, 2002-03
- 72 Alison Lemon, 2008-09
- 70 Kari Flunker, 2001-02
- 67 Julie Stauffer, 2002-03
- 66 Kara Cayton, 2010-11
- 63 Stacie Travis, 2006-07
- 63 Alison Lemon, 2009-10

3-Point Field Goal Pct. (1 FGM/G)

- .503 Kari Flunker (99-197), 2003-04
- .492 Kari Flunker (95-193), 2004-05
- .490 Alison Lemon (72-147), 2008-09
- .463 Brittany Smart (37-80), 2004-05
- .459 Brittany Smart (78-170), 2005-06
- .457 Crystal Patrick (37-81), 1987-88
- .426 Heather French (55-129), 1998-99
- .416 Kari Flunker (74-178), 2002-03
- .412 Kari Flunker (70-170), 2001-02
- .407 Heather French (33-81), 1997-98

Free Throws Made

- 219 Brittany Smart, 2006-07
- 196 Kirsten Rossotti, 2002-03
- 185 Vicki Butler, 1979-80
- 181 Kirsten Rossotti, 2001-02
- 166 Brittany Smart, 2005-06
- 152 Kirsten Rossotti, 1998-99
- 143 Aubrey Siemon, 2009-10
- 140 Kirsten Rossotti, 1999-2000
- 132 Brittany Smart, 2004-05
- 128 Emily Delimpo, 2003-04

Free Throw Pct. (2 FTM/G)

- .874 Brittany Smart (166-190), 2005-06
- .866 Amanda Porter (71-82), 1999-2000
- .846 Kari Flunker (77-91), 2001-02
- .846 Brittany Smart (219-259), 2006-07
- .841 Brittany Smart (132-157), 2004-05
- .825 Melissa Hartman (104-126), 1994-95
- .817 Aubrey Siemon (143-175), 2009-10
- .812 Aubrey Siemon (95-117), 2008-09
- .809 Kirsten Rossotti (152-188), 1998-99
- .793 Julie Stauffer (88-111), 2001-02

Rebounds

- 441 Aubrey Siemon, 2009-10
- 377 Amy Zehr, 1992-93
- 346 Emily Delimpo, 2003-04
- 342 Kirsten Rossotti, 2001-02
- 340 Kirsten Rossotti, 2002-03
- 336 Amy Zehr, 1991-92
- 326 Amy Bathrick, 1996-97
- 317 Aubrey Siemon, 2010-11
- 316 Emily Delimpo, 2004-05
- 297 Christine Copeland, 1994-95

Assists

- 178 Kari Flunker, 2003-04
- 177 Kari Flunker, 2004-05
- 168 Kari Flunker, 2002-03
- 166 Joy Fagan, 1988-89
- 165 Karah Walton, 2004-05
- 163 Alison Lemon, 2009-10
- 159 Karah Walton, 2005-06
- 154 Linda Smart, 1983-84
- 144 Julie Stauffer, 2002-03
- 142 Brittany Smart, 2006-07

Blocks

- 75 Heidi Peterson, 1981-82
- 55 Becky Cave, 1993-94
- 53 Becky Cave, 1995-96
- 53 Aubrey Siemon, 2009-10
- 51 Diane Rank, 1991-92
- 44 Aubrey Siemon, 2008-09
- 42 Diane Rank, 1990-91
- 39 Kirsten Rossotti, 1999-2000
- 37 Kirsten Rossotti, 2002-03
- 36 Aubrey Siemon, 2010-11

Steals

- 134 Cindy Cremeans, 1995-96
- 93 Brittany Smart, 2006-07
- 89 Kari Flunker, 2001-02
- 88 Brittany Smart, 2003-04
- 88 Kari Flunker, 2004-05
- 87 Kari Flunker, 2002-03
- 87 Brittany Smart, 2004-05
- 85 Melissa Hartman, 1995-96
- 83 Karah Walton, 2005-06
- 81 Joy Fagan, 1988-89

Career Top 10 Leaders



-thru 2/12/11-

Points

- 3,236 Brittany Smart, 2003-07
- 2,275 Kari Flunker, 2001-05
- 2,229 Kirsten Rossotti, 1998-2000, 01-03
- 2,103 Vicki Butler, 1976-80
- 1,760 Diane Rank, 1988-92
- 1,758 Alison Lemon, 2006-10
- 1,706 Julie Nourse, 1997-2001
- 1,678 Melissa Hartman, 1992-96
- 1,656 Julie Stauffer, 2000-04
- 1,642 Amy Zehr, 1989-93

Scoring Average

- 22.8 Brittany Smart, 2003-07
- 22.1 Vicki Butler, 1976-80
- 17.0 Kirsten Rossotti, 1998-2000, 01-03
- 16.1 Diane Rank, 1988-92
- 16.0 Kari Flunker, 2001-05
- 15.9 Lynn Strickland, 1987-89
- 15.6 Amy Zehr, 1989-93
- 14.9 Chris Friesen, 1985-89
- 14.1 Julie Nourse, 1997-2001
- 13.7 Alison Lemon, 2006-10

Field Goals Made

- 1,180 Brittany Smart, 2003-06
- 808 Kari Flunker, 2001-05
- 806 Vicki Butler, 1976-80
- 776 Kirsten Rossotti, 1998-2000, 01-03
- 703 Diane Rank, 1988-92
- 676 Julie Nourse, 1997-2001
- 663 Amy Zehr, 1989-93
- 612 Alison Lemon, 2006-10
- 603 Melissa Hartman, 1992-96
- 596 Emily Delimpo, 2002-06

Field Goal Pct. (4 FGM/G)

- .603 Lisa Campbell (207-343), 1982-84
- .570 Amy Zehr (663-1163), 1989-93
- .531 Julie Nourse (676-1272), 1997-2001
- .524 Brittany Smart (1180-2250), 2003-07
- .517 Kirsten Rossotti (776-1500), 1998-2000, 01-03
- .516 Aubrey Siemon (515-998), 2007-11
- .516 Diane Rank (703-1362), 1988-92
- .516 Emily Delimpo (596-1155), 2002-06
- .502 Lynn Strickland (290-578), 1987-89
- .498 Kari Flunker (808-1621), 2001-05

3-Point Field Goals Made

- 338 Kari Flunker, 2001-05
- 245 Brittany Smart, 2003-07
- 214 Julie Stauffer, 2000-04
- 209 Rachel Hurley, 2007-11
- 206 Alison Lemon, 2006-10
- 168 Kara Cayton, 2008-11
- 154 Melissa Hartman, 1992-96
- 153 Karah Walton, 2003-06
- 139 Stacie Travis, 2003-07
- 138 Pattie Schryer, 1998-2002

3-Point Field Goal Pct. (0.5 FGM/G)

- .458 Kari Flunker (338-738), 2001-05
- .439 Crystal Patrick (43-98), 1984-88
- .412 Brittany Smart (245-595), 2003-07
- .390 Heather French (127-326), 1995-99
- .373 Alison Lemon (206-552), 2006-10
- .372 Kara Cayton (168-452), 2008-11
- .366 Stacie Travis (139-380), 2003-07
- .362 Rachel Hurley (209-577), 2007-11
- .352 Julie Stauffer (214-608), 2000-04
- .352 Karah Walton (153-435), 2003-07
- .350 Bayley Nosal (108-309), 2005-09

Free Throws Made

- 669 Kirsten Rossotti, 1998-2000, 01-03
- 631 Brittany Smart, 2003-07
- 491 Vicki Butler, 1976-80
- 439 Aubrey Siemon, 2007-11
- 363 Emily Delimpo, 2002-06
- 354 Diane Rank, 1988-92
- 354 Julie Nourse, 1997-2001
- 328 Alison Lemon, 2006-10
- 321 Kari Flunker, 2001-05
- 318 Melissa Hartman, 1992-96

Free Throw Pct. (2 FTM/G)

- .837 Brittany Smart (631-754), 2003-07
- .813 Kari Flunker (321-395), 2001-05
- .801 Aubrey Siemon (439-548), 2007-11
- .763 Melissa Hartman (318-417), 1992-96
- .756 Julie Stauffer (270-357), 2000-04
- .755 Julie Nourse (354-469), 1997-2001
- .723 Kirsten Rossotti (669-925), 1998-2000, 01-03
- .699 Alison Lemon (328-469), 2006-10
- .695 Diane Lichtensteiger (137-197), 1978-81
- .689 Emily Delimpo (363-527), 2002-06

Rebounds

- 1,277 Aubrey Siemon, 2007-11
- 1,159 Kirsten Rossotti, 1998-2000, 01-03
- 1,074 Emily Delimpo, 2002-06
- 1,049 Amy Zehr, 1989-93
- 951 Diane Rank, 1988-92
- 944 Brittany Smart, 2003-07
- 919 Chris Friesen, 1985-89
- 918 Julie Nourse, 1997-2001
- 908 Christine Copeland, 1991-95
- 908 Kristi Beougher, 2003-07

Assists

- 644 Kari Flunker, 2001-05
- 545 Brittany Smart, 2003-07
- 513 Karah Walton, 2003-07
- 477 Alison Lemon, 2006-10
- 467 Julie Stauffer, 2000-04
- 456 Melissa Hartman, 1992-96
- 398 Heather French, 1995-99
- 335 Amanda Porter, 1997-2001
- 321 Linda Smart, 1981-84
- 316 Charity Cole, 1996-2000

Blocks

- 172 Becky Cave, 1992-96
- 152 Aubrey Siemon, 2007-11
- 149 Diane Rank, 1988-92
- 129 Kirsten Rossotti, 1998-2000, 01-03
- 88 Molly Earley, 2000-04
- 75 Heidi Peterson, 1980-84
- 67 Karah Walton, 2003-07
- 58 Christine Copeland, 1992-96
- 49 Kristi Beougher, 2003-07
- 48 Brittany Smart, 2003-07

Steals

- 345 Brittany Smart, 2003-07
- 331 Kari Flunker, 2001-05
- 293 Melissa Hartman, 1992-96
- 252 Alison Lemon, 2006-10
- 250 Karah Walton, 2003-07
- 230 Amanda Porter, 1997-2001
- 214 Cindy Cremeans, 1994-96
- 184 Amy Zehr, 1989-93
- 177 Heather French, 1995-99
- 173 Chris Friesen, 1985-89



The Flower




“YOUR ALL OCCASION FLORIST”

57 W. Main St., Downtown Xenia

AREA WIDE DELIVERY

372-1436

www.flowerstopofxenia.com



Docton Animal Clinic

10 Kinsey Road
Xenia, Ohio 45385
937-372-6391



**LEGACY
VILLAGE**

*Retirement
Community*

Independent
Homes

937.372.8992

Assisted
Living

937.372.0359

Gourmet Gift Baskets

Custom made gift baskets
available at:

1-866-324-9774

www.thebestgourmetgiftbaskets.com

20 N. Fountain, Springfield



155 W. Leffel
Lane

Springfield, OH
45506

937-325-5356



"Proud to Support the Yellow Jackets"

415 Bellbrook Avenue • P.O. Box 189
Xenia, Ohio 45385-0189
(937) 372-3541 • Fax (937) 372-3141
www.swlmk.com

Cedarville Fertilizer (937) 766-2411

RAYMOND JAMES®
& ASSOCIATES, INC.

Lou Vision

Vice President, Investments

Nate Sowder, CRPC®, WMS

Financial Advisor



MARKETS FLUCTUATE. RELATIONSHIPS SHOULDN'T.

WE'RE WITH YOU EVERY STEP OF THE WAY.

MEET US ON CAMPUS OR VISIT OUR OFFICE AT

THE GREENE. CALL 937.431.6700 TODAY!

Davenport Spends Fifth Week at No. 1 in NAIA Division II Women's Basketball Coaches' Top 25 Poll

KANSAS CITY, Mo. - For the fifth week in-a-row, Davenport (Mich.) occupies the No. 1 spot on the NAIA Division II Women's Basketball Coaches' Top 25 Poll. The Panthers remain unscathed and secured all 15 possible first-place votes and 405 points. Second-ranked Northwestern (Iowa) and third-ranked Morningside (Iowa) continue to hold down the fort with 392 and 379 points, respectively. No. 4 Sioux Falls (S.D.) and No. 5 Kansas Wesleyan make a return to the top five after upsets struck Saint Francis (Ind.) and Black Hills State (S.D.).



Top-ranked Davenport and guard Carrie Grubius and the Panthers outscored Concordia (Mich.) 61-38 in the first half and ran away with a 108-83 victory in its only game last week. Grubius had a team-high 28 points in just 19 minutes of action.

No. 2 Northwestern (24-1, 15-0 GPAC) keeps on plowing through its Great Plains Athletic Conference slate. The Red Raiders took down No. 22 Mount Marty (S.D.) 88-59 on Feb. 2 and Hastings (Neb.) 83-64 on Feb. 5. In the win over Mount Marty, 2010 NAIA First-Team All-American Becca Hurley scored a game-high 21 points and also contributed six assists and six rebounds.

Third-ranked Morningside (20-3, 10-2 GPAC) hosted Midland (Neb.) in its only game of the week on Jan. 2. The Mustangs had five players in double-digit scoring, including four of their starters, in the 88-66 home win. They were led by Chelsie Trask's 21 points on 4-of-9 shooting from 3-point land.

No. 4 Sioux Falls (21-3, 11-3 GPAC), whose three losses have all come in conference play, returns to the top five after a two-week hiatus. After falling to Mount Marty (S.D.) on Jan. 22, the Cougars have strung together four-straight wins, including a 69-60 victory over Dakota Wesleyan (S.D.) on Feb. 2 and an 83-81 nailbiter at Concordia (Neb.) on Feb. 5. With Sioux Falls' return, it marks the fifth week this season that three GPAC teams are present in the top five.

Fifth-ranked Kansas Wesleyan (24-1, 13-1 Kansas Collegiate Athletic Conference) made an appearance at No. 5 on Jan. 10, but was quickly dethroned by unranked and fellow KCAC member Friends (Kan.) 78-75 on Jan. 13.

Of the 13 teams that moved up in rank, No. 13 Iowa Wesleyan received a seven-spot boost and Marian (Ind.) improved four spots. William Penn (Iowa) took the biggest hit, dropping from No. 16 to 25, followed by Black Hills State's four-spot fall from No. 5 to 9.

Twelve conferences are represented on the Top 25 poll as the GPAC continues to lead with five teams: Northwestern, Morningside, Sioux Falls, No. 19 Briar Cliff (Iowa) and No. 23 Mount Marty. Three leagues, the American Midwest Conference, Midwest Collegiate Conference and Mid-Central College Conference, had a trio of teams garner national ranking.

The poll was voted upon by a panel of head coaches representing each of the conferences. The next poll will be announced on Feb. 14.

NAIA II National Rankings



NAIA Division II Women's Basketball Top 25 Poll #8 • Feb. 7, 2011

| Rank | Last Poll | School | 2010-11 Record | Pts |
|------|-----------|-------------------------------------|----------------|------------|
| 1 | 1 | Davenport University (Mich.) | 26-0 | 405 |
| 2 | 2 | Northwestern College (Iowa) | 24-1 | 392 |
| 3 | 3 | Morningside College (Iowa) | 21-3 | 379 |
| 4 | 6 | University of Sioux Falls (S.D.) | 21-3 | 361 |
| 5 | 7 | Kansas Wesleyan University | 24-1 | 348 |
| 6 | 8 | Indiana Wesleyan University | 22-3 | 345 |
| 7 | 4 | University of Saint Francis (Ind.) | 21-5 | 322 |
| 8 | 10 | Daemen College (N.Y.) | 21-4 | 316 |
| 9 | 5 | Black Hills State University (S.D.) | 18-5 | 299 |
| 10 | 11 | Walsh University (Ohio) | 20-4 | 296 |
| 11 | 12 | Sterling College (Kan.) | 21-3 | 265 |
| 12 | 9 | College of the Ozarks (Mo.) | 20-5 | 257 |
| 13 | 20 | Iowa Wesleyan College | 19-5 | 243 |
| 14 | 15 | Cedarville University (Ohio) | 19-6 | 236 |
| 15 | 13 | Saint Ambrose University (Iowa) | 21-4 | 217 |
| 16 | 18 | Northwest University (Wash.) | 18-5 | 193 |
| 17 | 14 | Cornerstone University (Mich.) | 19-6 | 192 |
| 18 | 19 | Tennessee Wesleyan College | 22-3 | 191 |
| 19 | 17 | Briar Cliff University (Iowa) | 17-10 | 158 |
| 19 | 23 | Marian University (Ind.) | 18-6 | 158 |
| 21 | 21 | Indiana University Southeast | 20-5 | 152 |
| 22 | 24 | Jamestown College (N.D.) | 17-6 | 113 |
| 23 | 22 | Mount Marty College (S.D.) | 18-8 | 111 |
| 24 | 25 | Cardinal Stritch University (Wisc.) | 20-6 | 104 |
| 25 | 16 | William Penn University (Iowa) | 19-8 | 61 |

Others Receiving Votes:

Southwestern (Kan.) 58; Valley City State (N.D.) 45; Montreat (N.C.) 44; Notre Dame (Ohio) 23; Concordia (Ore.) 23; Peru State (Neb.) 15; Saint Thomas (Fla.) 15; Huntington (Ind.) 15; Mount Mercy (Iowa) 14; Concordia (Mich.) 10; Dordt (Iowa) 7; Bethel (Ind.) 7; Milligan (Tenn.) 5; Minot State (N.D.) 4; Union (Ky.) 3; Brescia (Ky.) 3; Holy Names (Calif.) 3; Florida Memorial 1; Indiana Tech 1; Bethel (Kan.) 1; Corban (Ore.) 1.

MATT FRANZ
Photography

*"Dedicated to providing
high quality
photographs of your event!"*

www.mattfranz.com • matt@mattfranz.com

(937) 401-0079

Trent E. Licklider, CPA

- **Income Tax Preparation**
- **Payroll Service**
- **Free Consultations**
- **Personal, Quality Attention**
- **Open Year-Round**

937-372-7500

25 S. Detroit St., Xenia, OH 45385
cpa@licklidercpa.com

< Online Apparel Programs >

< **kiosk** >
virtual stores :)

www.kioskvs.com

We Support Cedarville University Athletics!



Springfield, Ohio

937-325-8480

Mom and Dad's Dairy Bar & Grille

320 N. Main St.,
Cedarville, OH

(937)766-2046

Offering Game Night Specials



Christian Camp & Retreat Center

- Registration for summer camp is open
 - We hire Cedarville students for summer ministry
 - Looking for a great family vacation.....?
- How about family camp?

740-778-CAMP

www.sciotohills.com

Hightech Automotive

*Appointments for sick cars
and unhappy owners;*

937.766.9852

**105 West Xenia Avenue
Cedarville, OH**

Richey



M.A. RICHEY MFG.
P.O. BOX 166
MICHIGANTOWN, IN 46057
1-800-333-PITS (7487)
765-249-2426 • FAX: 765-249-3010

STEPHEN GRIFFY
STEPHEN@RICHEYATHLETICS.COM
RICHEYATHLETICS.COM



Security for Your Family

Life insurance from Northwestern Mutual provides financial protection for your family from a company consistently receiving the best possible insurance financial strength ratings from A.M. Best (A++, 7/2009) and Fitch Ratings (AAA, 6/2009). The cash value of the policy can be used to help pay for college, to supplement your income or for emergencies. And you'll always know that your family is secure.

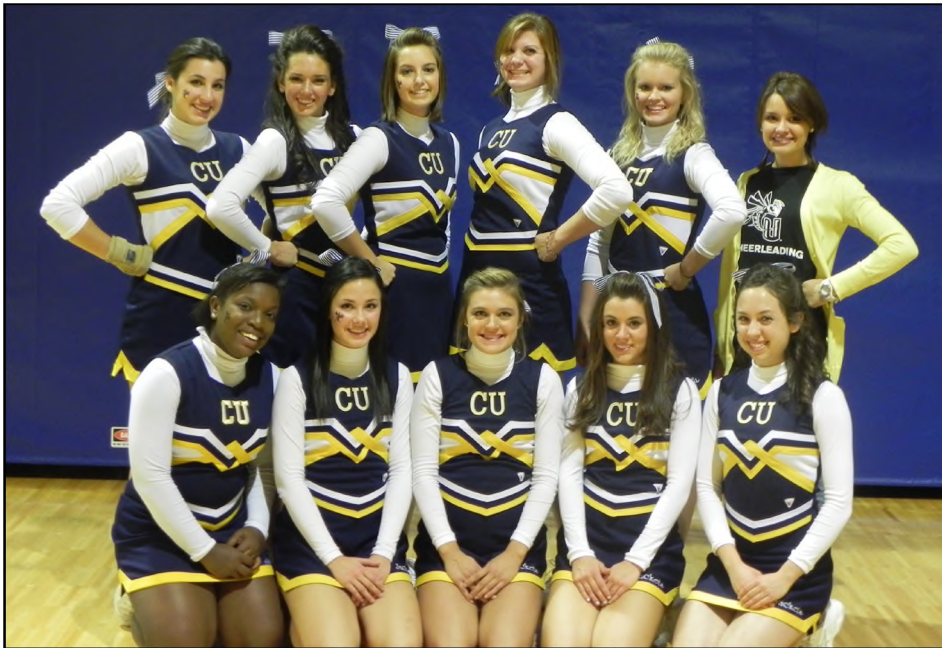


Eric M Anderson
Financial Advisor
70 Birch Aly Ste 210
Beavercreek
(937) 427-7170

Northwestern Mutual
insurance / investments / ideas™

05-2644 The Northwestern Mutual Life Insurance Company, Milwaukee, WI (Northwestern Mutual). Eric M Anderson is an insurance agent of Northwestern Mutual (life and disability insurance, annuities) and a Registered Representative and Investment Adviser Representative of Northwestern Mutual Investment Services, LLC (securities), a subsidiary of Northwestern Mutual, broker-dealer, registered investment advisor and member FINRA and SIPC.

2010-11 Lady Jacket Cheerleaders



- Kasandra Chambers
Hebron, KY
- Christina Cruthfield
Upper Marlboro, MD
- Autumn Houser
Athens, PA
- Alicia Iaffallando
Minneapolis, MN
- Meg Navarro-Gupta
Ypsilanti, MI
- Ashley Peterson
Troy, OH
- Katie Siegle
Macomb, MI
- Ashley Smith
Lexington, KY
- Stephanie Strejc
Elmhurst, IL
- Hayley Studebaker
New Carlisle, OH



The Cedarville University Spirit Unit consists of the Cheerleaders and Mascot! The unit takes great pride in giving 100% at Lady Jacket basketball games. This group is dedicated to upholding the rich traditions of Cedarville University through leadership skills, dedication, commitment, community involvement, mentorship to the youth of today and promoting school spirit through sporting events, exhibitions and competitive events.

GIVE HER THE RING SHE'S ALWAYS DREAMED ABOUT.



AND GET THE MOST
BEAUTIFUL ENGAGEMENT RING
FOR YOUR MONEY.

GUARANTEED.*



DIAMOND CELLAR®

6280 Sawmill Road, Dublin, Ohio 43017 • Easton Town Center, 3960 New Bond Street, Columbus, Ohio 43219

*Price Guarantee information is available at www.diamondcellar.com.



2010-11 Cedarville University Lady Jackets



4



**Kayla
Jenerette**
5-5, Guard
Freshman
Greenville, SC

5



**Becky
Orchard**
5-10, Guard
Freshman
Loudonville, OH

11



**Rachel
Hurley**
5-4 Guard
Senior
Indiana, PA

12



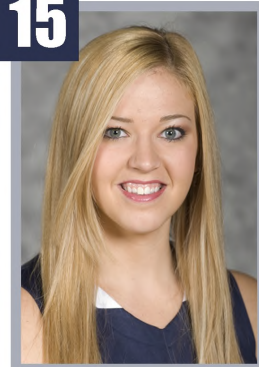
**Aubrey
Siemon**
6-1, Center
Senior
Springfield, OH

14



**Heidi
Ansel**
5-7, Guard
Freshman
Warrenville, IL

15



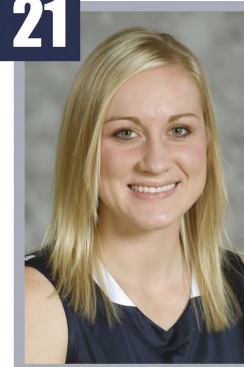
**Caitlyn
Brooks**
6-0, Forward
Senior
Centerville, OH

20



**Jenna
Williams**
5-8, Forward
Freshman
Xenia, OH

21



**Lydia
Miller**
5-7, Guard
Senior
Berlin, OH

22



**Jenna
Smith**
6-2, Center
Senior
Cedarville, OH

23



**Kara
Cayton**
5-4, Guard
Junior
South Webster, OH



**Combs Interior
Specialties Inc.**

471 Funderburg Road
Fairborn, Ohio 45324
Phone: 937-879-2047
Fax: 937-879-0003
Cell: 937-604-3134

Mark Combs - CEO/President
mcombs@combsinterior.com

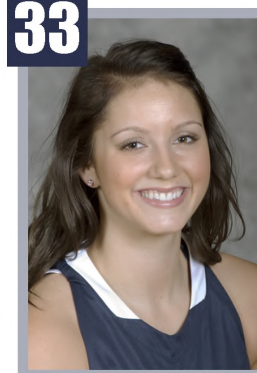
www.combsinterior.com

30



**Kathy
Jakucki**
5-11, Forward
Junior
Vineland, NJ

33



**Deborah
Chandler**
6-0, Forward
Freshman
Southlake, TX

JDM

Custom Impressions
When First Impressions MATTER!
www.jdmcustomimpressions.com

Over 800,000 items to show
Your Team Spirit!!

Jerseys Warm-ups
Team Bags Fan Favorites
Athletic Camp shirts, balls and bags

**Proud Alum Supporter
of the
Yellow Jackets!!!**