

1966

A Charge to Keep

Cedarville College

Follow this and additional works at: https://digitalcommons.cedarville.edu/miscellaneous_historical_documents



Part of the [Higher Education Commons](#)

Recommended Citation

Cedarville College, "A Charge to Keep" (1966). *Miscellaneous Historical Documents*. 5.
https://digitalcommons.cedarville.edu/miscellaneous_historical_documents/5

This Appeal for Funds is brought to you for free and open access by DigitalCommons@Cedarville, a service of the Centennial Library. It has been accepted for inclusion in Miscellaneous Historical Documents by an authorized administrator of DigitalCommons@Cedarville. For more information, please contact digitalcommons@cedarville.edu.

A CHARGE TO KEEP

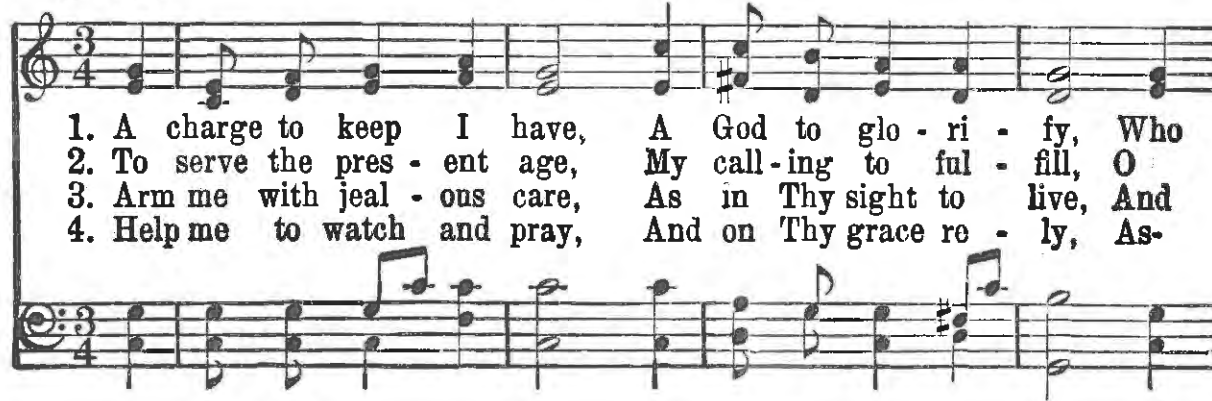


A Charge to Keep I Have.

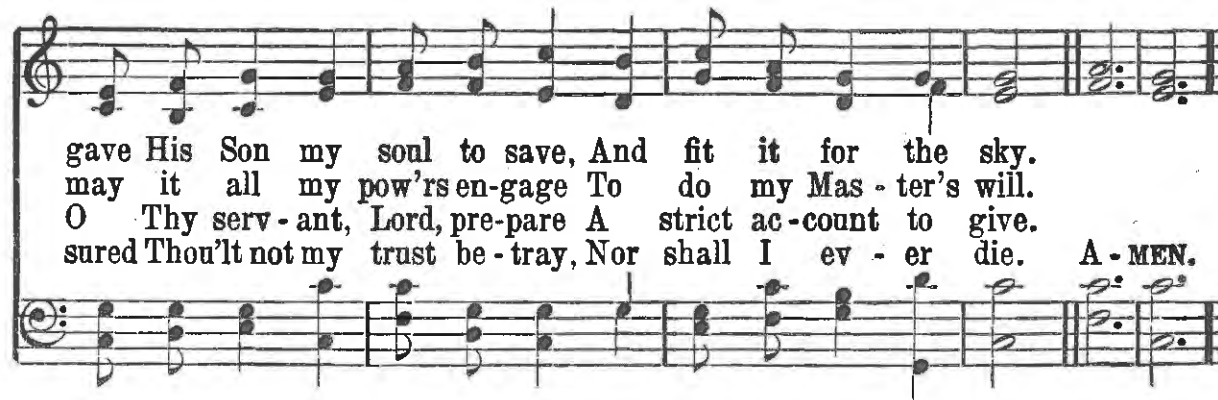
Charles Wesley.

Boylston. S. M.

Lowell Mason.



1. A charge to keep I have, A God to glo - ri - fy, Who
2. To serve the pres - ent age, My call - ing to ful - fill, O
3. Arm me with jeal - ous care, As in Thy sight to live, And
4. Help me to watch and pray, And on Thy grace re - ly, As-



gave His Son my soul to save, And fit it for the sky.
may it all my pow'rs en - gage To do my Mas - ter's will.
O Thy serv - ant, Lord, pre - pare A strict ac - count to give.
sured Thou'lt not my trust be - tray, Nor shall I ev - er die. A - MEN.

A CHARGE TO KEEP I HAVE, a God to glorify, Who gave His Son my soul to save, And fit it for the sky.



Dr. James T. Jeremiah, President

The trustees, administration, and faculty of Cedarville College have been entrusted with a great responsibility. We do, indeed, have "a charge to keep." Parents and churches already have directed many young people to our classrooms, and we must make certain that they receive the best possible Christian education. The two boys pictured on the cover of this report represent many who in the near future will make application for admission to Cedarville. It is imperative that we plan now for their coming. Thousands of dollars have been given to the college for its operation and expansion, so we are responsible to wisely use this investment for the glory of God.

Cedarville College has taken a stand for the "Word of God and the testimony of Jesus Christ"; therefore, in the day of spiritual apostasy we have "a charge to keep" with regard to the faith "once for all delivered unto the saints." We are responsible to do everything within our power to maintain a college true to the Word of God.

Through the years Cedarville College has witnessed great blessing from God, so our responsibility is even greater than it would be if the achievements were wrought by the wisdom and endeavors of men. No one related to this Christian college can say that our growth has been, is, or will be, dependent upon human resources. When the faculty selected Zechariah 4:6 as the year verse for 1965-66, they expressed their convictions on this matter. "Not by might, nor by power, but by my spirit, saith the Lord." As we consider what has happened at Cedarville, especially over the past 12 years, we can say

with the Psalmist, "This is the Lord's doing; it is marvelous in our eyes." (Psalm 118:23)

The following pages will present a progress report and a program for the future. The entire brochure is intended as a President's Report to our constituency. We hope you will rejoice with us and respond to the appeal for a better Cedarville College as we plan for the years ahead.

It is no secret that most colleges today are experiencing phenomenal growth in enrollment. In 10 years' time, Cedarville has grown from a total enrollment of 119 to 760. Though many of these young people come to us from other denominations, 88 per cent of them come from Baptist churches. If facilities are available, we will enroll 900 young people on campus next year.

We are very grateful for the men and women who are serving on our college faculty. It is not likely that a more dedicated group of people can be found on any campus. To begin with, these individuals are dedicated to God and His service. In the very beginning of the present administration of the college, Biblical standards were written for our faculty and staff. Those who serve here gladly accept these standards because they believe the college has a distinctive type of education which could not be made available to our students if our spiritual standards were lowered.

This spiritual emphasis, however, is no deterrent to high academic standards. We believe that qualified Christian young people who have a right relationship with God will endeavor to achieve the highest possible academic goals. Therefore, we encourage our faculty to obtain the best possible academic background and then insist upon high academic achievement in the classroom. Many of our faculty members have completed studies for the doctor's degree; others are presently working toward that goal. These people are to be commended for their willingness to spend long hours of study, and in some cases, also carry full teaching loads here on the campus.

New faculty members must be added to our staff next fall if we are to meet the needs of the young people our churches are sending to us. We appeal to qualified and dedicated Christian people to help us meet the need in this most important aspect of our program.

With a 100-acre campus, Cedarville College has planned facilities for future growth. Russell W. Jenkins, Jr., of McLean, Virginia, has been retained as our college architect. The campus plan reproduced in another section of this report will show that future development is one of our major concerns.

Cedarville College by conviction has deliberately classified itself as a "Baptist College of Arts and Sciences." This immediately limits our sources of revenue to those who are sympathetic to our denominational convictions. It should be pointed out that it sometimes becomes a barrier in obtaining funds from secular organizations and foundations. Obviously, many Christians of other denominations will feel restraint when it comes to the support of a college which is distinctively Baptist. This, of course, is understandable. Because of this, however, it needs to be clearly understood that the burden rests more heavily upon those who believe as we do and desire to have their young people educated in a college where our Christian faith is upheld.

Up to the present time, we have not been financed by subsidies from the United States Government. We have not qualified for such support, nor have we sought it. The Board of Trustees has not to this time established a policy as to whether or not we should seek and accept government aid.

The government is presently contributing billions of dollars to the support of education. Schools accepting and using these funds are able to provide the facilities for thousands of young people who may wish a Christian college education, but are hindered in this because schools of our type have not been aided by government funds. Often we have been asked why we do not seek government aid. The answer is simple: we have preferred to have the support of God's people. If our own Christian people do not support us, then what? Dear reader, you answer this question.

It is at this point in my opinion where many church-related schools in the past have been sold out to secularism. They found themselves in a church relationship which did not care enough to support the institution to which they had committed the education of their own young people. The colleges then looked to other sources for financial aid. Those who thus supported the college eventually controlled it and the church relationship was severed or it became insignificant.

Last summer an 80-bed addition was made to Faith Hall at a cost of \$165,000. During this period, we also purchased 21 apartments located in the Cedar Park Development. This housing expansion cost \$160,000 and will temporarily house 133 men. Eventually, the college plans to use these units for married-student housing. New and larger buildings are now being planned for future use. Be sure to see these plans in more detail as you read the following pages.

Most of our dormitories have been financed by the sale of college bonds. At the present time, we have sold \$192,350 of a \$350,000 bond issue approved by the Board of Trustees. It is hoped that our churches and interested individuals having money to loan will consider Cedarville College as a sound place

of investment. The income from the dormitories will adequately care for the principal and the interest over a period of years. We are very grateful for the response which has been shown for this aspect of our program. At the present time there are 269 individuals and churches who have invested money in the college by the purchase of Series A, B, and C bonds.

We believe Cedarville College has something distinctively Christian to offer young people who are enrolled here. We are concerned that we keep this emphasis now and in the years to come. You, our friends, are responsible with us to see that this is done. We all have "a charge to keep." In great measure, your financial support of this college will be the guarantee of its continued loyalty to Christ and the Bible.

During the past year, we have been stressing the importance of erecting a new college library. This building will cost \$375,000. Interested friends have contributed \$134,937.77 in cash, but the entire amount must be raised by designated gifts since the library is not an income-producing building.

Since the present college library was built for a student body of 225, one can easily see how inadequate this facility is now with a student body of 760. We are not providing adequate library facilities for our present student body. This problem must be remedied, and that very soon. Actually, we should have begun the construction of this new unit a year ago.

Many individuals in various parts of the country have been spending time in prayer and effort seeking funds for this new building. We commend them for their sacrifice in helping us meet this goal. Funds now available for the library are a reality because so many of you did something about the problem. May I encourage you to continue your efforts in obtaining gifts for the new Cedarville College library? We need this new building now more than we did last year when the college banquet program was being carried on in various churches and communities.

Many times we are asked concerning the accreditation of Cedarville. At the present time, the college is engaged in a self-study program which we sincerely trust will lead to regional accreditation. The North Central Association of Colleges and Secondary Schools has already sent one examining team to consider our operation with a view to candidate status. The association has appointed a consultant who has already met with the Administration of the college, and another meeting is planned for early spring. The accreditation problem can be solved when adequate financial stability is obtained.

It is hoped that this report will give our supporting churches and interested individuals a pictorial view of our financial standing at the present time. The graphs located in other sections of this brochure will clearly show these matters.

THE CEDARVILLE STORY

Cedarville College has a good heritage. It was founded by Christian individuals who had a vital interest in the spiritual welfare of their young people. Established by the Reformed Presbyterian Church, the college was chartered by the State of Ohio on January 26, 1887.

The motive which led these founders to establish a college of arts and sciences was aptly expressed by its first president, Dr. David McKinney, in 1903:

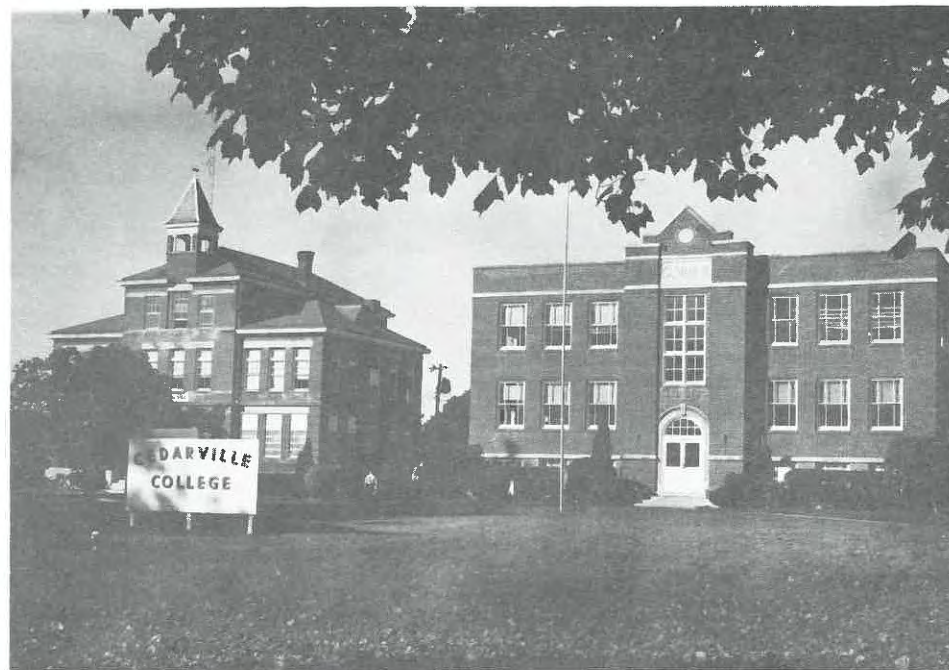
Above all, Cedarville College believes that culture of the mind without the nurture and growth of spiritual life is a mistake. Education without morality is a menace to the state. . . . accordingly the Bible is a textbook of the college. No student can graduate who has not taken a thorough and systematic course in it.

In 1953 the operation of the college was transferred to the Baptist Bible Institute of Cleveland which retained the name of Cedarville College. Proud of its heritage, the college which is now an approved school of the General Association of Regular Baptist Churches, perpetuates the original purpose of its founders.

Under the direction of Dr. James T. Jeremiah, president since 1954, the college has experienced phenomenal growth. Since 1955 the student body has increased by almost 750 per cent. Because of this sudden increase in enrollment, Cedarville College has been forced to greatly expand both its faculty and facilities.

This sudden growth in students, faculty, and facilities, however, has not taken Cedarville away from its heritage. The objects which have symbolized the college and its spirit through the years still remain today. The tower of "Old Main" represents our link with the past, its foundations and traditions; the cedars symbolize life and growth.

The Cedarville College family feels that this growth has brought us to the threshold of an even greater ministry in the future.



1887-1966

TO SERVE THE PRESENT AGE, My calling to fulfill,
O may it all my pow'rs engage To do my Master's will.

Our Program

Our young people of today are faced with the problem of preparing themselves for a complicated twentieth century which includes diversified fields ranging from microbiology to astrophysics.

To meet the complexity of our society, many young people are going to attend a liberal arts college. Will they attend where they can be equipped spiritually as well as academically to face the challenge of our times? We believe that the Lord has raised up Cedarville College to meet this need.

Cedarville College exists "For the Word of God and the testimony of Jesus Christ." Its purpose is to provide a four-year arts and sciences program that will equip the graduate academically to succeed in his chosen profession, but even more important is that all classes are integrated with a Christian philosophy that will help the young person to mature spiritually and find God's will for his life.

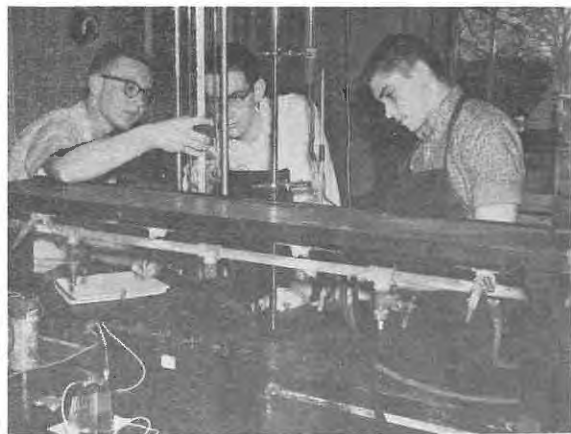
Cedarville is responding to the challenge of the future by offering a program that develops the whole man socially, academically, and spiritually.

A wide curriculum is offered to the student at Cedarville.

Accounting
Art
Bible
Biology
Business
Chemistry

Christian Education
Church Music
Elementary and Secondary
Education
English
History

Mathematics
Music
Physical Education
Physical Science
Secretarial Science
Sociology
Speech



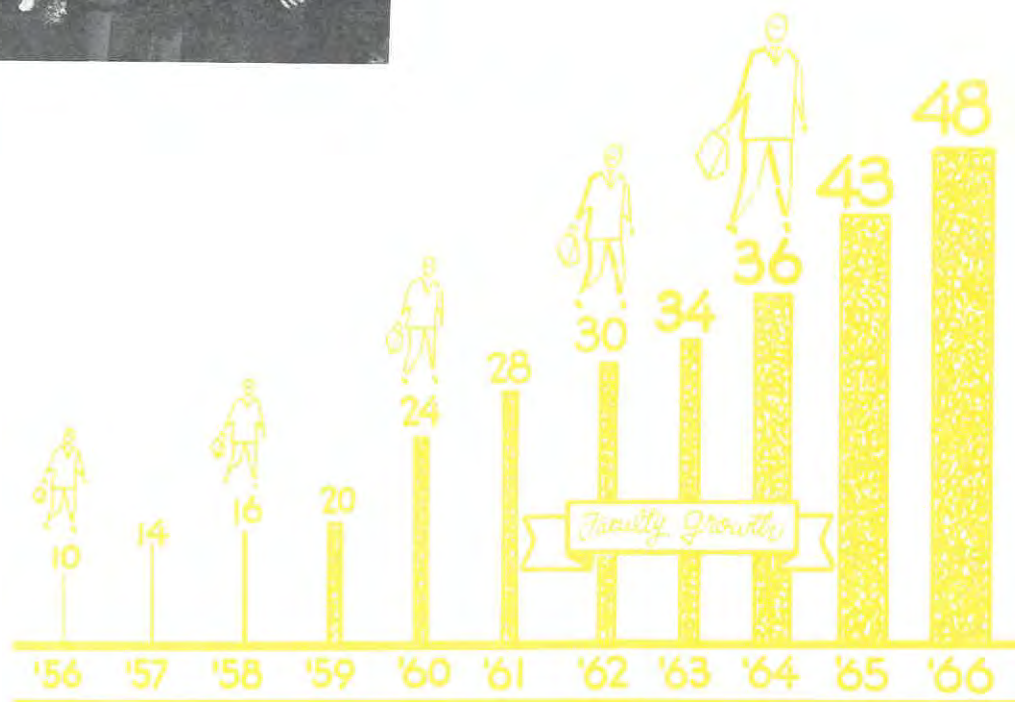
ARM ME WITH JEALOUS CARE, As in Thy sight to live

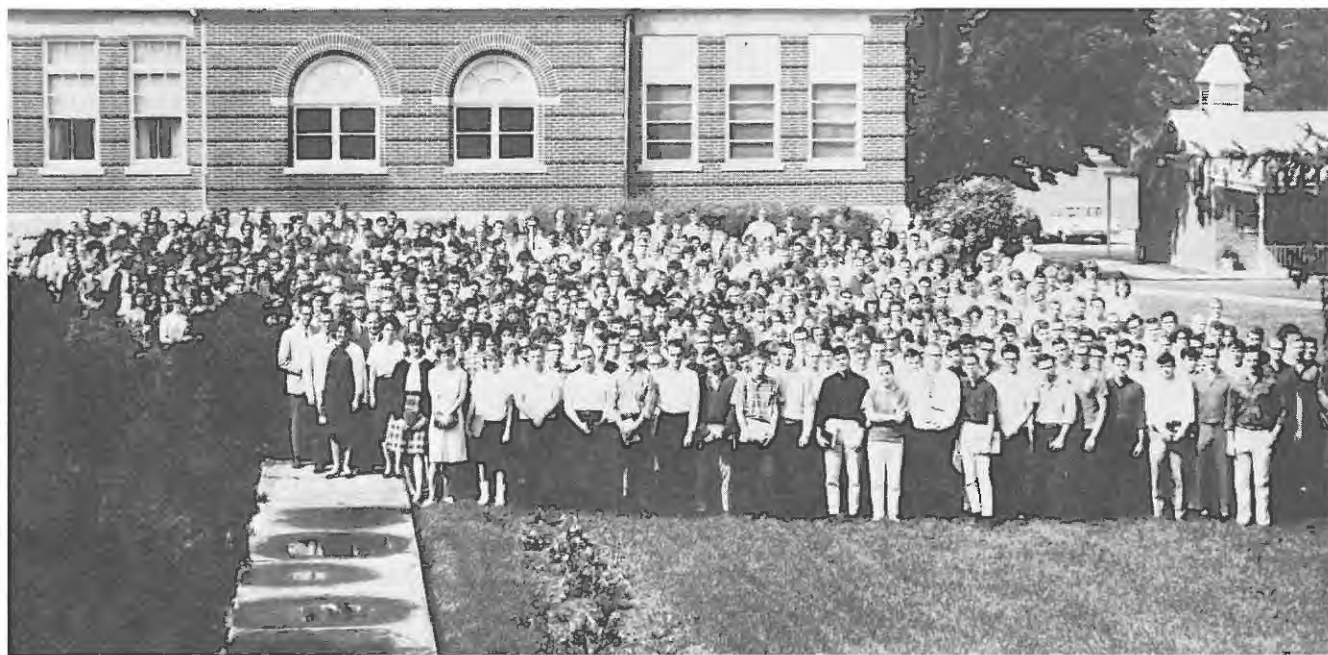


ACADEMIC GROWTH

Cedarville College is making every effort to provide the finest academic training possible. Competent professors are constantly being added to our faculty, and many are now working on advanced degrees.

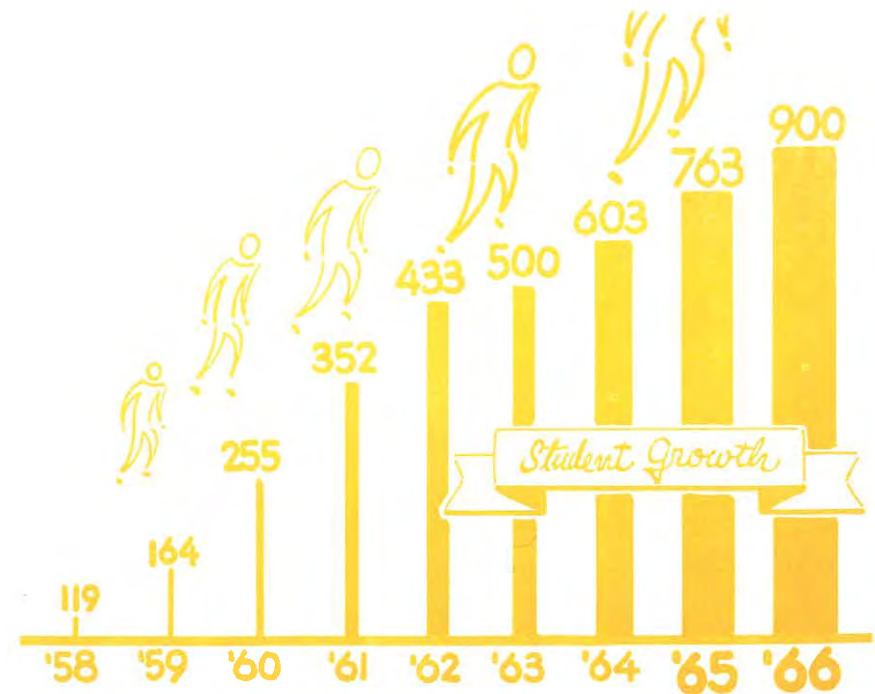
The college is a member of the Ohio College Association and The Council for the Advancement of Small Colleges. In 1963, the State Department of Education of Ohio provisionally approved our teacher-training program. The college has engaged the services of a consultant to help us in our pursuit of accreditation by the North Central Association of Colleges and Secondary Schools.





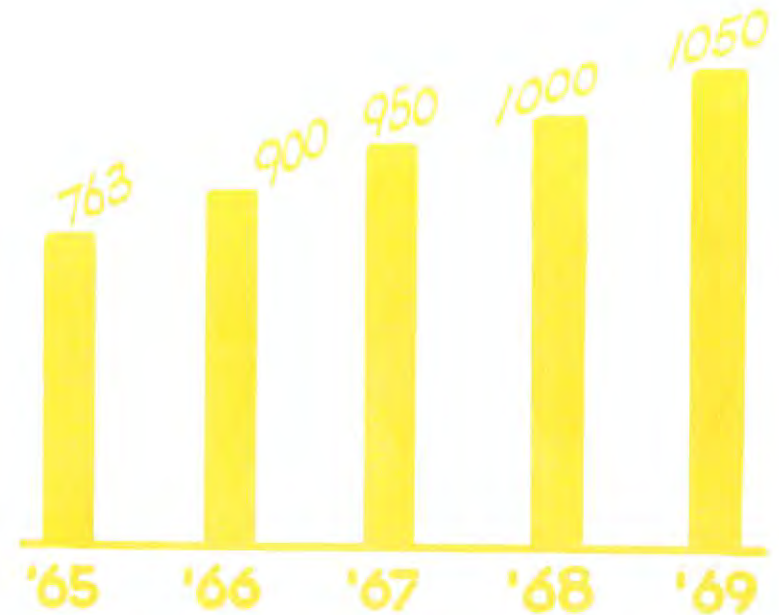
NUMERICAL GROWTH

The current student body of 763 represent
29 states and 3 foreign countries.



OUR PROBLEM:

Projected Enrollment



Poses a Problem

The enrollment in American colleges and universities will double in the next decade. The students who are now taxing the facilities of the elementary and high schools will come to college in growing numbers. American youth between the ages of 18 and 21 number almost 9 million. This figure will be raised to more than 13 million in the next 10 years.

In addition, a larger percentage of American youth is seeking a college education. Nearly 1 out of 2 of college age are now in college. It is expected that this figure will be nearly 2 out of 3 by 1970.

The enrollment at Cedarville has experienced a phenomenal growth in the past few years. Yet if we are to maintain the traditional ratio of facilities and teachers to students, we are faced with the staggering task of providing within a decade as much as has been provided by colleges in the entire history of our nation.

O Thy Servant, Lord, PREPARE A STRICT ACCOUNT TO GIVE



FAITH HALL

RECENT CONSTRUCTION



WILLIAMS HALL



MILNER HALL



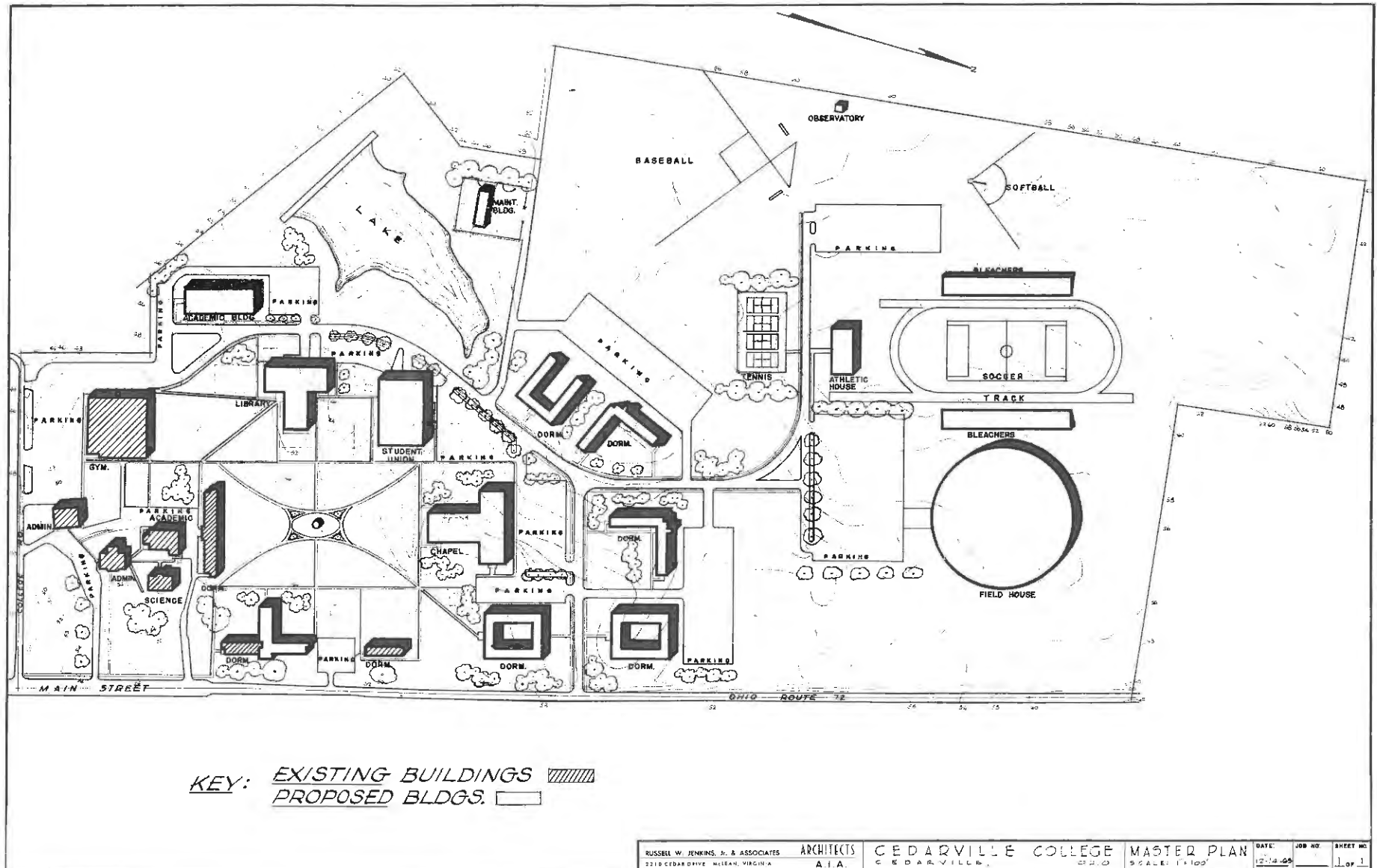
STUDENT CENTER-GYMNASIUM



PATTERSON HALL

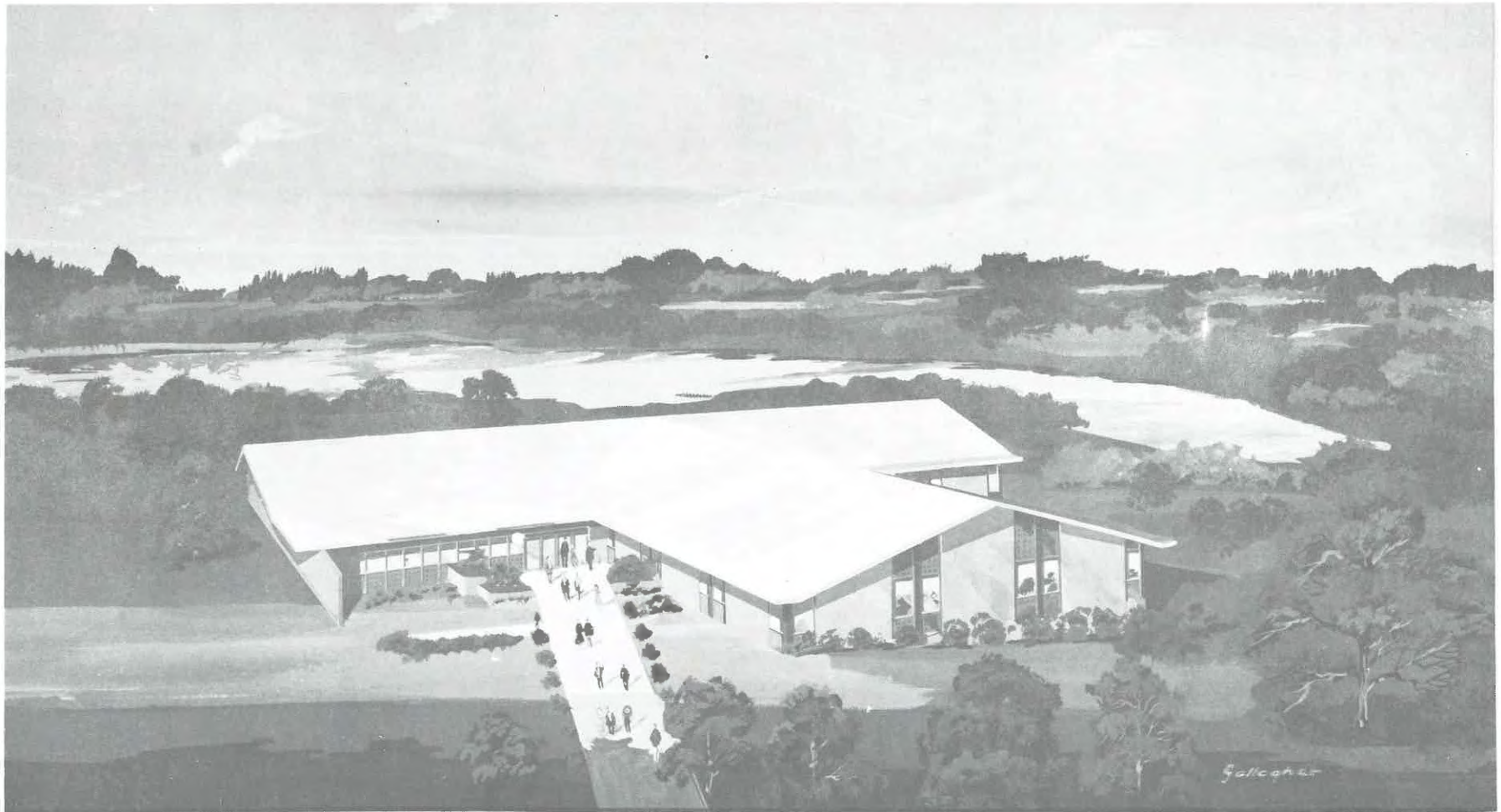
TO SERVE THE PRESENT AGE...

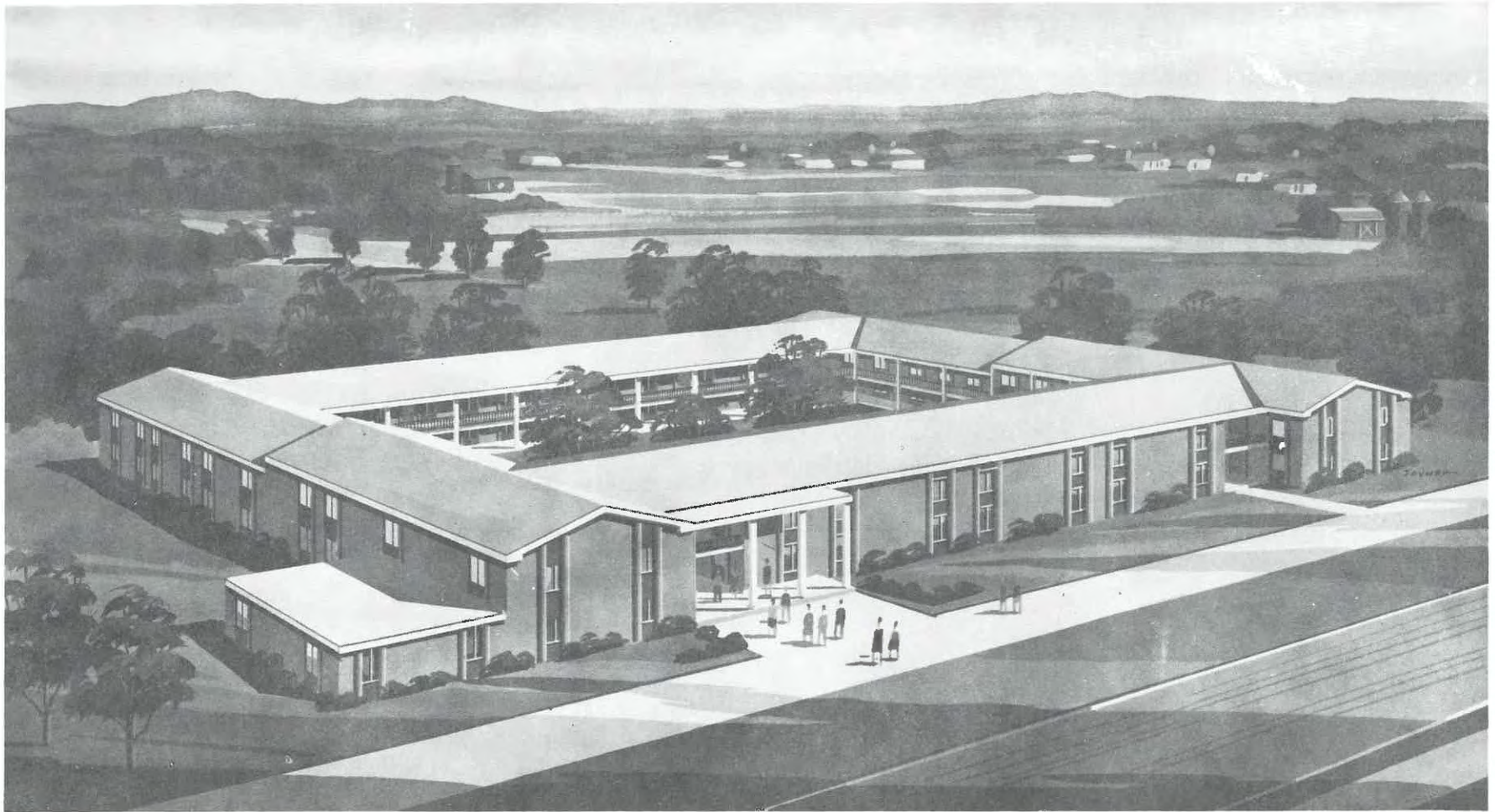
Our Campus Development Program



NEW LIBRARY

The new library will be a one-story structure providing 18,882 square feet of space. The library will hold 82,000 volumes and can be expanded in all four directions when larger facilities are needed.





NEW DORMITORY

The new dormitory will house 220 students. The internal structure of the building will place eight students in units of four two-bedroom spaces, a restroom, and study lounge. Two guest suites and an apartment for the house mother are also included in the structure along with a large social lounge.

HELP ME TO WATCH AND PRAY, And on Thy grace rely

CEDARVILLE IS YOUR COLLEGE

Cedarville College was raised up of the Lord to meet the need of our churches. At Cedarville your young people receive thorough academic training in the arts and sciences in a conservative evangelical environment. We feel that it is not only the college's responsibility to provide an education equal to other colleges but to help our students mature spiritually, find God's will for their lives, and return to their local churches to be effective witnesses for Christ in their chosen professions. A Christ-centered curriculum, daily chapel services, missionary conferences, Bible lectures, and assigned Christian service activities are combined with the students' academic pursuits to make them "thoroughly furnished unto all good works."

CEDARVILLE TRAINS YOUR YOUNG PEOPLE

Of our present student body of 763, there are 674 young people who come from independent Baptist churches. Every student must be a born-again Christian and be committed to living a separated life as indicated by his personal testimony.

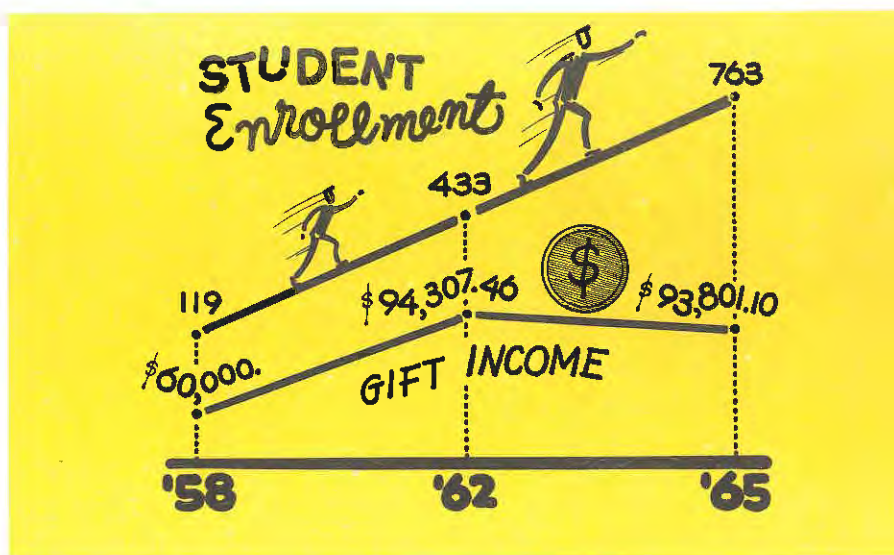
Many of the young people from our churches are going to attend liberal arts colleges. Some of them return to their local churches antagonistic toward our conservative convictions. We believe that the Lord would have us expand our campus so that we might provide training for the increasing number of young people seeking admission from our churches.

IS CEDARVILLE YOUR RESPONSIBILITY?

Today, no student pays for the entire cost of his education. Therefore, part of the expense of the school has to be supplied by churches and interested friends of the college.

We are without apology a Baptist college of arts and sciences that exists to train young people from our churches with the finest academic education in an atmosphere of high spiritual standards. We believe our churches want a fully accredited liberal arts college, and we are on the threshold of achieving this goal. But it will cost considerably.

A college with our convictions cannot expect the same help from foundations, businesses, government, etc., that other colleges enjoy. Therefore, the burden lies upon us. Are we willing to pay the price?



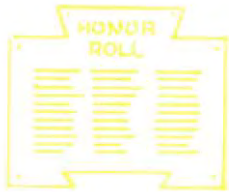
WAYS YOU CAN HELP

BONDS FOR THE DORMITORY



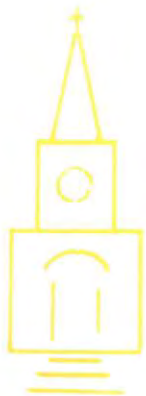
Our new series "C" bond issue of \$350,000 will enable us to build a new dormitory. Income from the dormitory will be used to retire the bond issue. Pastors can encourage individuals in their churches to invest their savings in these bonds which pay five per cent interest. In this way, their money will both work for them by earning more interest than in a savings account, and work for the Lord by providing a greater ministry at Cedarville College.

GIFTS FOR THE LIBRARY



The library will not provide income to underwrite a bond issue and must be built through gifts. To raise the \$300,000 needed, the college has challenged 300 churches or interested friends to give \$1,000 each. The names of donors will be engraved on an honor roll plaque that will be erected inside the new library.

\$10 A WEEK ON CHURCH BUDGET



Some have asked if we can sell bonds to build the library. The answer is "yes" IF enough of our churches will place the college on the budget. For example, each church designating \$10 per week to the Bond Redemption Fund will permit us, over a 10-year period of time, to pay the principal and interest on \$4,018 worth of bonds. In order to finance the library entirely by bonds, we would need 88 churches giving \$10 per week to the Bond Redemption Fund.

Realizing that Christian schools training our Christian young people deserve a place in our church missionary giving, we suggest that you prayerfully review your church budget. Although each church may not be able to give a \$1,000 gift, every church can participate by placing the college on their church budget or increasing their present giving.

A CHARGE TO KEEP I HAVE...

CHURCHES CONTRIBUTING TO THE LIBRARY BUILDING FUND

July 1, 1964 - June 30, 1965

Florida:
Gulfport, Community Bapt. \$ 12.00

Illinois:
Alton, Brown St. Bapt. 800.82
Joliet, Elgin Ave. Bapt. 29.02
Mattoon, Faith Bapt. 32.00
Mattoon, First Bapt. 110.00
Springfield, Berean Bapt. 150.00

Indiana:
Bremen, First Bapt. 75.00
Brownsburg, Bethesda Bapt. 1,000.00
Elkhart, First Bapt. 2,500.00
Ft. Wayne, Immanuel Bapt. 1,065.00
Gary, Central Bapt. 209.12
Hammond, Hessville Bapt. 23.00
Indianapolis, North Bapt. 34.09
Indianapolis, Windsor Bapt. 25.00
LaPorte, Bapt. Missionary 179.10
Lebanon, Walnut St. Bapt. 50.00
Mishawaka, First Bapt. 1,040.00
N. Manchester, Bible Bapt. 38.50
S. Bend, Community Bapt. 262.00
Valparaiso, Calvary Bapt. 19.81

Iowa:
Des Moines, Grandview Pk. Bapt. 400.00
Eldora, First Bapt. 1,114.85
Muscatine, Walnut St. Bapt. 100.00
Waterloo, Burton Ave. Bapt. 36.10
Waterloo, Hagerman Bapt. 20.00
Waterloo, Walnut St. Bapt. 577.25
Waverly, First Bapt. 45.00

Kentucky:
Covington, Calvary Bapt. 1,250.00

Michigan:
Cheboygan, First Bapt. 50.00
Detroit, Alpha Bapt. 35.00
Detroit, Berean Bapt. 1,006.50
Flint, Riverdale Bapt. 500.00
Grand Rapids, Calvary Bapt. 100.00
Highland Pk., Highland Pk. Bapt. 305.75
Howell, Bethel Bapt. 22.00
Jackson, Cascades Bapt. 30.00
Kalamazoo, Bethel Bapt. 1,000.00
Kalamazoo, Calvary Bapt. 234.00
Lapeer, First Bapt. 65.27
Midland, Calvary Bapt. 250.00
Mt. Pleasant, First Bapt. 100.00
Ypsilanti, Calvary Bapt. 1,050.00

Minnesota:
Anstin, First Bapt. 209.26

New Jersey:
Franklin Lakes, Franklin L. Bapt. 25.00
Hackensack, First Bapt. 302.00
Haddon Hts., Haddon Hts. Bapt. 435.80
Hainesport, Hainesport Com. Bapt. 225.00
Newfield, First Bapt. 50.16
Northfield, First Bapt. 10.00

New York:
Binghamton, Triple "M" Class 10.00
Randolph, Steamburg Union 15.00

Ohio:
Athens, S. Canaan Bapt. 10.00
Bellefontaine, Calvary Bapt. 375.00
Berea, Berea Bapt. 460.20
Berlin Hts., Berlin Hts. Bapt. 10.00
Blanchester, First Bapt. 907.77
Bowling Green, First Bapt. 200.00
Caldwell, First Bapt. 50.00
Cedarville, Grace Bapt. 2,162.48
Cedarville, Women's Miss'y Union 70.00
Cleveland, Brookside Bapt. 54.01
Cleveland, Cedar Hill Bapt. 12.00
Columbus, Clintonville Bapt. 800.00
Coshocton, First Christian Bapt. 20.00
Dayton, Ft. McKinley Bapt. 81.00
Dayton, Washington Hts. Bapt. 294.00
E. Cleveland, Hayden Ave. Bapt. 365.00
Elyria, First Bapt. 350.76
Euclid, Euclid-Nottingham Bapt. 951.50
Findlay, Calvary Bapt. 750.00
Fostoria, Fostoria Bapt. 10.00
Galion, First Bapt. 35.00
Gallipolis, First Bapt. 1,000.00
Garrettsville, Troy Bapt. 30.75
Huntsburg, Huntsburg Bapt. 201.00
Kipton, Camden Bapt. 82.75
Lakewood, OARBC Women's Miss'y U. 851.00
Litchfield, Litchfield Bapt. 10.00
Lorain, Penfield Jt. Bapt. 626.82
McDonald, First Bapt. 45.00
Medina, First Bapt. 360.00
Niles, First Bapt. 405.00
Northfield, Northfield Bapt. 250.00
N. Madison, Bible Bapt. 223.00
N. Madison, N. E. Ohio Women's M. F. 25.00
N. Olmsted, N. Olmsted Bapt. 313.12
N. Royalton, N. Royalton Bapt. 100.00
Norwalk, Calvary Bapt. 311.21
Parma, First Bapt. 80.00
Portsmouth, Temple Bapt. 600.00
Rittman, First Bapt. 100.00
Salem, Calvary Bapt. 100.00
Sandusky, Calvary Bapt. 1,000.00
Spencer, Spencer Bapt. 500.00
Stryker, First Bapt. 25.00
Tiffin, Calvary Bapt. 30.00
Toledo, Emmanuel Bapt. 1,079.30

Toledo, N. Bethel Women's M. Fel. 21.80
Troy, Troy Bapt. Temple 150.00
Wauseon, First Bapt. 31.00
W. Liberty, Grace Chapel 96.00
Williamsfield, Pymatuning Community 15.00
Willowick, First Bapt. 50.00
Wilmington, Grace Bapt. 67.10
Xenia, Calvary Bapt. 50.00

Pennsylvania:
Butler, First Bapt. 415.24
Chester, Bible Covenant 25.00
Chester, N. Chester Bapt. 60.00
Erie, Bethel Bapt. Temple 700.00
Erie, Garden Hts. Bapt. 12.61
Grove City, First Bapt. 146.06

Wisconsin:
Union Grove, Union Grove Bapt. 20.00

INDIVIDUALS GIVING

July 1, 1964 - June 30, 1965

Adams, W. B.
Allerton, Frances S.
Alt, Vern L.
Amstutz, Helen
Amstutz, Myron (Mr. & Mrs.)
Anderson, James M.
Anderson, Lester (Rev.)
Ark, Flora
Auffort, George (Mr. & Mrs.)
Baal, Verena
Bacon, Clayton E.
Baker, Ernest R. (Mr. & Mrs.)
Banks, Walter
Barber, Audrey E. (Miss)
Barber, Kenneth
Barnes, Clyde
Barrett, Norva L.
Bartheld, Adolph W.
Bartholomew, Ruby E.
Barto, Charles P.
Bates, Stephen
Bauman, Edward J. (Captain)
Beal, Alan
Beard, Kenneth E.
Beckley, Stella
Bedford, Rudy
Beilby, Kenneth L.
Beiser, Eugene
Bellow, Lloyd (Mr. & Mrs.)
Bennett, Harold J.
Bennett, John G.
Berger, Al
Bibighaus, Warren (Mr. & Mrs.)
Blackburn, Fred H.
Blakely, Roger, Sr.
Blessing, Beulah
Bodenmiller, Millard
Bolen, Wilbur F. (Mr. & Mrs.)
Bolton, Floyd (Mrs.)
Bonnell, Lydia R.
Booth, David S.
Bost, Myers
Boyd, George L. (Mr.)
Brake, Donald
Brazeau, David
Brewer, Leslie M.
Bridenbaugh, Frank V.
Brinkerhoff, Trevison
Brown, Avis (Mrs.)
Brown, Beryl (Mrs.)
Brown, Oakla (Mrs.)
Brown, Waide (Mrs.)
Bryant, Joan
Bryant, Tyronne (Mr. & Mrs.)
Bull, Dora S. (Mrs.)
Burcham, O. T.
Burt, Howard T.
Burton, Forest M.
Bush, Clay
Bush, Paul
Butler, Albert
Butts, Pauline
Callan, Donald
Carlson, Gordon H.
Carrara, John (Rev.)
Chaffe, Stuart L. (Mr. & Mrs.)
Chamberlain, Jesse (Mr. & Mrs.)
Chappell, N. B.
Chattin, Hazel
Cline, Jack (Dr.)
Collins, Donald E. (Mr. & Mrs.)
Collins, Robert (Mrs.)
Colwell, Alfred
Cook, Phyllis J.
Cope, Barbara Ann
Corell, Z. W.
Craig, Elsie S.
Crawford, Roy (Mrs.)
Craver, Henry
Crumb, Clara
Culbertson, Robert (Mrs.)
Culbertson, Vertie
Curcio, Charles
Cushey, Loretta
Custer, Harry C.
Czerniak, Anthony
Czerniak, Larry
Daverman, Edward H.
Davis, Alberta
Davis, Clarence E. (Rev.)
Davis, Leroy (Dr.)
Davis, Raymond (Mr. & Mrs.)
Davison, Robert J.
Day, Forrest B.
Day, Marilyn A.
Decker, Joseph E.
Dillon, Robert (Mr. & Mrs.)
Diveley, Bob
Diveley, Carolyn
Diveley, Walter
Dodson, Kenneth F. (Rev.)
Domokos, Martin
Dougherty, George (Mr. & Mrs.)
Dowell, Boyd Max
Dowssett, Lester (Mrs.)
Drake, George O.
Draxler, John A.
Du Bois, Robert E.
Dunham, R. E.
Dunn, George B. (Mr. & Mrs.)
Dyke, Arthur M.
Earnhart, Ernest
Eaton, Jesse G. (Rev.)
Ecker, Clifford (Rev.)
Ehnis, Harold L.
Eltz, Mary E.
Enders, Harold (Mr. & Mrs.)
Engelman, George R.
Engelman, Marvella
England, Ray (Mr. & Mrs.)
Engle, Larry R.
Entner, C. L. (M.D.)
Entner, John M. (Mr. & Mrs.)
Evanoff, A.

TO SERVE THE PRESENT AGE...

Fetzer, David W.
Field, Robert E.
Fisher, Gerald E. (Dr. & Mrs.)
Fisher, L. E.
Fisher, S. H.
Flickinger, Kathleen A.
Flint, Roscoe R. (Mr. & Mrs.)
Foulkrod, Tom (Mr. & Mrs.)
Foust, Charles D.
Freemont, Carson
French, Gerald A. (Mr. & Mrs.)
Funk Donald C.
Fusco, Leo (Mr. & Mrs.)

Gale, Ralph
Gann, Ernest F.
Gardner, David (Rev. & Mrs.)
Garry, Ruth
Geeting, Charles E.
Gilbert, C. R.
Goddard, James (Mr. & Mrs.)
Goethals, Richard (Mr. & Mrs.)
Goldie, William (Mr. & Mrs.)
Goodrich, Helen L.
Goodrich, Terry
Grafton, Timothy
Grant, Denzlow D.
Green, William
Greenwood, Franklyn
Gribble, Robert A.
Gromacki, Robert
Grossman, Gilbert
Gullette, Laurine

Hacker, Dana
Hackett, Nellie (Mrs.)
Hahn, Earl H.
Hahn, Edward L.
Hall, Mildred G.
Hall, William H.
Halvorsen, P. R. (Rev.)
Hamilton, Anna M. (Mrs.)
Hamilton, Ida L.
Hamilton, James
Hamman, David E.
Hammer, Elva M.
Hanthorn, Eugene
Harlan, Paul H. (Mr. & Mrs.)
Haram, David L.
Harris, James C. (Mr. & Mrs.)
Harris, William B.
Hartman, James S.
Hartsell, Jeane
Hartwig, Leland H.
Hartwig, Frank (Mr. & Mrs.)
Haseltine, Marcus (Mr. & Mrs.)
Haskins, Morris E.
Hathaway, Lillian
Hauser, Henry
Hawker, Ellen S.
Hayward, Helen
Heberly, Thomas F.
Henson, Rnth K. (Mrs.)
Herriman, Rnth L.

Hess, George J. (Dr. & Mrs.)
Hetrick, Warren H. (Mr. & Mrs.)
Hetzel, Orval
Hill, James (Mrs.)
Hill, Kathryn
Hill, Ralph B.
Hitchcock, May K.
Hobbins, Anna
Holbrook, Tim
Hollaway, John C.
Homanick, John
Honeywell, H. M.
Hopkins, William (Mr. & Mrs.)
Hornbarger, W. H.
Horsfall, Don (Mr. & Mrs.)
Housley, H. A.
Howder, Frank (Mrs.)
Howdysell, William J.
Howe, Estella
Howell, Frances K.
Hoyer, Richard (Rev. & Mrs.)
Hudgens, Richard W.
Hull, Merle R. (Rev. & Mrs.)
Humphreys, R. M. (Mr. & Mrs.)
Hurst, C. B.
Hutson, Mildred T.

Ibach, Gene S. (Mr. & Mrs.)
Ickes, Betty
Ingersoll, Nelson (Mr. & Mrs.)
Intveld, John (Mrs.)

Jackson, James A.
James, D. Ralph
Jaster, Florence Fay
Jenkins, Russell W.
Jeremiah, David (Mr. & Mrs.)
Jeremiah, James T. (Dr. & Mrs.)
Johnson, Carol A. E.
Johnson, Carl A. E. (Mr. & Mrs.)
Johnson, Clifford (Dr.)
Jones, Clinton L. (Mr. & Mrs.)
Jones, Herman W.
Jones, Ralph H. (Mr. & Mrs.)
Jones, Robert C. (Mrs.)
Juillard, Millard
Jury, Mark (Mr. & Mrs.)

Keating, Robert (Mrs.)
Kellogg, Miriam
Kemper, W. H. (Mr. & Mrs.)
Kennedy, Ralph
Kennedy, Robert
Kenney, Donald K. (Mr. & Mrs.)
Kensil, John H.
Ketting, Arend M.
Key, Pauline
Kinney, A. M.
Kirkman, Paul (Rev.)
Knott, Dale (Mr. & Mrs.)
Kovach, Steve
Krise, Donald
Kuhn, Max O.

Lachman, Fred (Mr. & Mrs.)
LaFrence, Vincent H.
Lancaster, Richard K. (Dr.)
Lane, Victor A.
Langeneger, Gordon
Langford, Dean K.
Lawther, Alex
Lee, Nelson
Leonard, J. W. (Mr. & Mrs.)
Leunk, Elizabeth
Leunk, J. H.
Lewis, Allan E. (Dr.)
Lewis, Cecil (Mrs.)
Lewis, D. E. (Mr. & Mrs.)
Lewis, Howard (Mr. & Mrs.)
Lightly, Dorothy
Lightly, Mabel I.
Lindeman, Esther
Lindstrom, Edward (Mr. & Mrs.)
Lockhart, Lela
Louis, George H.
Loving, Charles K. (Mr. & Mrs.)
Lower, Merlyn E.
Lucas, Robert
Lundquist, Lydia (Mrs.)

MacDonald, Alama E.
Maddox, Clifford (Dr. & Mrs.)
Madison, L. P. (Mr. & Mrs.)
Mahla, F. (Mrs.)
Maidment, Lee
Majeska, A. Edwin (Mrs.)
Mann, Jesse R. (Mrs.)
Manning, Roy L.
Marshall, Alice M.
Marshall, Gerald (Mr. & Mrs.)
Marshall, Mary (Mrs.)
Marshall, Raymond
Mathis, Ron
Matthews, C. F. (Rev.)
Mawhorter, T. J.
McClintic, Floyd
McClurg, Agnes
McCoy, G. C.
McDonald, Cleveland
McIntosh, Richard
McMullen, Clifford (Mr. & Mrs.)
McPheeters, Buster (Mr. & Mrs.)
McVeigh, Donald
Meade, Joseph (Mr. & Mrs.)
Meissner, Walter (Mr. & Mrs.)
Merwald, Milton H.
Meyer, Jack R.
Mick, Ronald
Micka, Edward F.
Miller, Anna L. (Mrs.)
Miller, Glenn W. (Mr. & Mrs.)
Miller, Roy L. (Mr. & Mrs.)
Milner, George S. (Dr.)
Milner, Helen
Milner, John A. (Mr. & Mrs.)
Milner, Robert S.
Miter, Robert F.

Moeller, David
Mollohan, Kaye (Miss)
Morgan, Donna Rae
Morgan, Johanna P. (Mrs.)
Mousa, Virgil (Mr. & Mrs.)
Mumma, Ellen C.
Murphy, Dale (Mr. & Mrs.)
Myers, Joseph J. (Mr. & Mrs.)

Neff, Harold D. (Mr. & Mrs.)
Newhouse, C. L.
Newman, Wilma B. (Mrs.)
Nicklas, Norman
Nimmo, William F.
Nordlund, Ralph T.
Nymerberg, Cyril J. (Mr. & Mrs.)

Oakley, Hugh T.
Oaks, Allen D.
Ober, Harold E.
O'Bryon, George F.
Oehmcke, Charles
Ogrodowski, Joseph G.
Overholt, James

Papp, Ethel G.
Park, Clyde
Patterson, Blanche
Patterson, Glen C.
Patterson, William B.
Pearce, Dennis
Pearce, Eunice M. (Miss)
Perkins, Hazelle
Peterson, Donald
Peterson, William (Mr. & Mrs.)
Petersime, Ray M.
Petry, Norman A.
Pierson, W. M. III
Polner, John E. (Mr. & Mrs.)
Pollock, Agnes
Price, Nedra
Pritchett, Robert R.

Radcliff, Larry
Radel, William H.
Ramsey, Hugh S. (Dr.)
Rathfon, Everett
Rean, Stanley F.
Reed, John W.
Reed, Ralph E.
Reese, Robert P. (Mr. & Mrs.)
Reesser, Charles E.
Reider, Alberta
Renfrow, Richard
Ressinger, Elizabeth (Mrs.)
Reynard, Grant T. (Mr. & Mrs.)
Rice, Grant (Rev.)
Richardson, James
Rietveld, Floyd (Mr. & Mrs.)
Rife, Ralph L.
Rinehart, Earle C.
Riter, William R.
Rix, Ferris W.

Roads, Helen (Mrs.)
 Rockey, Robert C.
 Rogers, Robert F.
 Rohrer, A. E. (Mr. & Mrs.)
 Roloff, Merle E.
 Rosenthal, Kate B.
 Ross, Olive G. (Mrs.)
 Roth, Carroll D.
 Rupp, Arthur
 Russell, J. E.
 Russell, O. E. (Mrs.)
 Russell, William F. (Mr. & Mrs.)

Sadler, William A. (Mr. & Mrs.)
 Saring, Clara (Mrs.)
 Sarrett, J. R. (Mr. & Mrs.)
 Scarbrough, Douglas
 Schaeffer, Andrew J.
 Schenck, Lauren (Rev. & Mrs.)
 Scherer, S. S.
 Schildroth, Ronald W.
 Schimkus, Richard
 Schneppe, Larry (Mrs.)
 Schulte, Mary Ellen
 Schultz, Sydney L. (Mr. & Mrs.)
 Scovell, Lyle C.
 Seldon, Willard W.
 Semler, Albert (Mr. & Mrs.)
 Shade, E. Verne (Mr. & Mrs.)
 Sharp, James
 Shaw, Elwood R.
 Shaw, Florence
 Shelton, Max R. (Mr. & Mrs.)
 Shenefield, Launce R.
 Shriver, Russell
 Shroyer, Stanley
 Shugg, Katherine B.
 Shultz, Mildred
 Siegfried, Rose (Mrs.)
 Simmons, Donald
 Simpkins, Joy (Mrs.)
 Siplock, N. L. (Dr.)
 Skelton, Sylvia
 Smith, Elmer C.
 Smith, Gene A.
 Smith, Gerald L.
 Smith, Harold
 Smith, Ralph W., Jr.
 Smith, Stella
 Sommerfeld, Clinton W.
 Sorenson, Jack
 Southwell, Marie
 Speece, Homer S.
 Spielberger, David (Mrs.)
 St. Clair, Kenneth
 Stephens, Marvin (Mr. & Mrs.)
 Stewart, James B.
 Stoeckel, Albert L. (Mrs.)
 Stone, Sylvia M.
 Stratton, George M. (Mrs.)
 Strnbe, Marjorie W.
 Stubblefield, W. E. (Mr. & Mrs.)
 Sullivan, Alton
 Sullivan, Virgil
 Sumner, Robert (Rev.)
 Sunden, Howard F.
 Sutton, Lee
 Sweeney, Ethel S.
 Swieciecke, Millard
 Swieciecky, Michael
 Swift, Margaret T. (Mrs.)
 Swigart, Kenneth D.
 Tarter, Charles E.
 Taylor, Ray (Mr. & Mrs.)

Thomson, Florence M.
 Thomson, George
 Thornton, Jerry (Mr. & Mrs.)
 Thornton, William D. (Mr. & Mrs.)
 Townsley, Charles A.
 Tremba, Michael (Mr. & Mrs.)
 Trimble, Grace
 Truxton, C. O. (Mr. & Mrs.)
 Turner, Lee

Uber, Charles C. (Mrs.)
 Umbaugh, Sergie E. (Mrs.)

Valkenburg, Melville
 Vermillion, Claude (Mr. & Mrs.)
 Vernon, Howard C.
 Vigneulle, Ruth E.
 Von Bergen, Ruth (Mrs.)

Wade, Bailey
 Wagner, W. Maxine
 Wagnitz, Gerald
 Waitkus, Joseph
 Walker, Gilbert R.
 Walker, Hugh A. (Mr. & Mrs.)
 Wall, Betty R.
 Wall, Roy C. (Mr. & Mrs.)
 Ward, George E.
 Ward, Marjorie E.
 Warda, William
 Warner, Clarence J. (Mr. & Mrs.)
 Watson, Norman G.
 Webster, Cecil R.
 Webster, Darwin R. (Mr. & Mrs.)
 Weiss, Andrew (Mr. & Mrs.)
 Wenner, Robert H.
 West, Mary Ellen
 White, O. C. (Mr. & Mrs.)
 Willetts, Earl V. (Rev.)
 Williams, Arthur F. (Dr.)
 Williamson, Clarence (Mrs.)
 Willie, Almon
 Windon, Gail L.
 Winner, Mary E.
 Winters, E. A.
 Woelflin, George L.
 Woltersdorf, M.
 Woodburn, John H. (Mr. & Mrs.)
 Woodend, J. H. (Mr. & Mrs.)
 Wyse, Leola
 Wyse, Rodney

Zeller, Sadie
 Zielcke, Muriel

CHURCHES SUPPORTING THE GENERAL PROGRAM

July 1, 1964 - June 30, 1965

Colorado:

Englewood, Cherrelyn 1st Bapt. \$ 25.00
 LaJunta, Bapt. Tabernacle 21.39
 Pueblo, Parkview Bapt. 15.00

Connecticut:

Newton, Bible Bapt. 60.00

Florida:

Gulfport, Community Bapt. 27.00

Idaho:

Boise, Whitney Bapt. 160.49
 Kuna, Kuna Bapt. 12.00
 Lewiston, Emmanuel Bapt. 30.00
 Moscow, Grace Bapt. 36.00
 Notus, First Bapt. 30.00
 Parma, Roswell Bapt. 25.55

Illinois:

Alhambra, First Bapt. 101.14
 Alton, Brown Street Bapt. 100.00
 Bunker Hill, Berean Bapt. 195.00
 Chatsworth, Calvary Bapt. 65.00
 Chicago, Belden Ave. Bapt. 300.00
 Decatur, Riverside Bapt. 793.00
 Deerfield, Community Bapt. 120.00
 E. Moline, Sycamore Bapt. 85.00
 E. Moline, Third Street Bapt. 120.00
 Elmhurst, Calvary Bapt. 30.00
 Galesburg, Henderson St. Bapt. 40.00
 Harvey, First Bapt. 273.00
 Jerseyville, Delhi Bapt. 62.54
 LaSalle, First Bapt. 50.00
 Mahomet, Grace Bapt. 72.15
 Mattoon, Faith Bapt. 270.00
 Metamora, Germantown Bapt. 54.00
 Oak Lawn, Faith Bapt. 30.00
 Pana, First Bapt. 308.15
 Plainfield, First Bapt. 30.00
 Pontiac, Calvary Bapt. 132.00
 Quincy, Calvary Bapt. 265.00
 Rapid City, Sycamore Bapt. 5.00
 Roxana, First Bapt. 301.88
 Sauk Village, First Bapt. 33.00
 Silvis, First Bapt. 370.00
 Silvis Heights, Silvis Hgts. Bapt. 100.00
 Utica, Utica Baptist 60.00
 Winfield, Faith Bapt. 44.99

Indiana:

Anderson, Edgewood Bapt. 300.00
 Argos, First Bapt. 120.00
 Beech Grove, First Bapt. 182.03
 Bremen, First Bapt. 120.00
 Brownsburg, Bethesda Bapt. 610.00
 Boonville, Calvary Miss'y Bapt. 30.00
 Cambridge City, First Bapt. 32.50
 Churubusco, Calvary Bapt. 330.00
 Columbia City, Ormas Bapt. 89.60
 Columbia City, Tri Lakes Bapt. 237.34
 Connersville, Eastview Bapt. 40.00
 Crawfordsville, E. Side Bapt. 30.00
 Crawfordsville, Pleasant View Bapt. 255.00
 Elkhart, First Bapt. 900.00
 Evansville, Bible Bapt. 60.00

Evansville, Mill Rd. Bapt. 55.00
 Fort Wayne, Crestwood Bapt. 65.00
 Fort Wayne, Immanuel Bapt. 1,002.84
 Fort Wayne, Shoaff Pk. Bapt. 300.00
 Gary, Aetna Bapt. 170.00
 Gary, Brunswick Bapt. 130.00
 Gary, Central Bapt. 699.16
 Gary, Glen Park Bapt. 420.00
 Gary, Miller Bapt. 64.85
 Greenfield, First Bapt. 180.00
 Hammond, Heasville Bapt. 214.00
 Highland, Calvary Bapt. 333.50
 Indianapolis, Berean Bapt. 150.00
 Indianapolis, Devington Bapt. 100.00
 Indianapolis, Faith Bapt. 104.47
 Indianapolis, Grace Bapt. 220.00
 Indianapolis, Windsor Village Bapt. 240.00
 Indianapolis, N.W. Bapt. 44.80
 Kokomo, Bible Bapt. 120.00
 Lafayette, Kossuth St. Bapt. 170.00
 LaPorte, Bapt. Missionary 120.00
 Lebanon, Walnut St. Bapt. 25.00
 LaPaz, Calvary Bapt. 25.00
 Mentone, First Bapt. 465.00
 Mishawaka, Bapt. Bible 52.42
 Mishawaka, First Bapt. 588.90
 New Haven, New Haven Bapt. 100.00
 Plainfield, Calvary Bapt. 60.00
 Rochester, Hillcrest Bapt. 72.00
 South Bend, Community Bapt. 230.00
 Valparaiso, Calvary Bapt. 240.00
 Warsaw, Fellowship Bapt. 451.35
 Wawaka, Coopersville Bapt. 56.00
 Yeddo, Yeddo Bapt. 44.75

Iowa:

Algona, Regular Bapt. 50.00
 Ames, Campus Bapt. 420.00
 Clear Lake, Regular Bapt. 33.00
 Corwith, Grace Bapt. 20.00
 Creston, First Bapt. 168.10
 Des Moines, Airport Bapt. 120.00
 Des Moines, Grandview Park Bapt. 220.00
 Eldora, First Bapt. 428.70
 Grundy Center, First Bapt. 325.00
 Iowa Falls, Bethel Bapt. 3.00
 Knoxville, First Regular Bapt. 24.00
 LeClaire, LeClaire Bapt. 45.00
 Monroe, Bapt. Mission 20.00
 Monroe, First Bapt. 235.00
 Muscatine, Walnut St. Bapt. 65.00
 Perry, First Bapt. 325.00
 Sioux Center, First Bapt. 27.67
 Waterloo, Burton Ave. Bapt. 50.00
 Waterloo, Walnut St. Bapt. 1,200.00
 Waverly, First Bapt. 35.00
 Winterset, Grace Bapt. 60.00

Kansas:

Kansas City, West Side Bapt. 34.05
 Manhattan, Grace Bapt. 20.25
 Overland, Westbrooke Bapt. 167.50
 Russell, Bible Bapt. 15.00
 Shawnee Mission, Olivet Bapt. 8.50

| | | | | | | | | |
|----------------------------------|------------|--|--------------------------------------|------------|-----------------------------------|----------|-------------------------------------|--------|
| Kentucky: | | | Nebraska: | | Dayton, Patterson Park Brethren | 15.00 | Warren, Bethel Bapt. | 60.00 |
| Covington, Calvary Bapt. | \$1,000.00 | | Nebraska City, First Bapt. | 52.76 | Dayton, Washington Hts. Bapt. | 80.00 | Wauseon, First Bapt. | 361.62 |
| Maine: | | | Omaha, Temple Bapt. | 120.00 | Elyria, First Bapt. | 1,673.75 | Wellington, First Bapt. | 98.65 |
| Lincoln, Bible Bapt. | 119.40 | | New Jersey: | | Euclid, Nottingham Bapt. | 1,242.58 | Wheelerburg, Wheelerburg Bapt. | 533.70 |
| Massachusetts: | | | Atlantic City, Chelsea Bapt. | 300.00 | Fairborn, Community Bapt. | 15.00 | Willowick, First Bapt. | 355.00 |
| Rowley, First Bapt. | 180.70 | | Elizabeth, East Bapt. | 15.00 | Fairborn, Grace Bapt. | 136.00 | Winchester, First Bapt. | 40.00 |
| Springfield, Grace Bapt. | 232.56 | | Florence, First Bapt. | 80.37 | Fairborn, United Miss'y | 15.00 | Xenia, Calvary Bapt. | 104.00 |
| Michigan: | | | Franklin Lakes, Franklin Lakes Bapt. | 50.00 | Findlay, Calvary Bapt. | 390.00 | Xenia, Community Bapt. | 10.00 |
| Adrian, Berean Bapt. | 35.00 | | Hackensack, First Bapt. | 1,072.50 | Findlay, First Bapt. | 8.00 | Xenia, Emmanuel Bapt. | 255.00 |
| Almont, Almont Bapt. | 190.00 | | Haddon Heights, Haddon Hts. Bapt. | 1,267.50 | Fostoria, Fostoria Bapt. | 373.60 | Xenia, First Reformed | 125.00 |
| Bay City, First Bapt. | 293.33 | | Medford, First Bapt. | 66.03 | Galion, First Bapt. | 105.00 | Yellow Springs, Methodist | 21.91 |
| Britton, Bethel Bapt. | 25.00 | | New York: | | Gallipolis, First Bapt. | 1,475.00 | Youngstown, Grace Bapt. | 75.93 |
| Bronson, First Bapt. | 59.56 | | Batavia, Grace Bapt. | 25.00 | Garrettsville, Troy Bapt. | 130.00 | Zanesville, Calvary Bapt. | 120.00 |
| Caro, First Bapt. | 300.00 | | Bay Shore, Calvary Bapt. | 210.00 | Grafton, Midview Bapt. | 60.00 | Pennsylvania: | |
| Cass City, First Bapt. | 80.00 | | Buffalo, Calvary Bapt. | 934.39 | Greenville, Faith Bapt. | 111.00 | Butler, First Bapt. | 805.82 |
| Central Lake, First Bapt. | 60.00 | | Buffalo, Hedstrom Memorial Bapt. | 100.00 | Harrietsville, Rd. Fork Bapt. | 150.00 | Chester, N. Chester Bapt. | 195.00 |
| Coldwater, Bible Bapt. | 147.00 | | Endicott, W. Endicott Bapt. | 80.00 | Hinckley, Hinckley Ridge Bapt. | 60.00 | Claysville, First Bapt. | 55.00 |
| Detroit, Alpha Bapt. | 75.00 | | Greenport, Bible Bapt. | 100.00 | Hubbard, Calvary Bapt. | 25.00 | Corry, First Bapt. | 120.00 |
| Detroit, Berean Bapt. | 110.00 | | Hamburg, First Bapt. | 390.90 | Huntsburg, Huntsburg Bapt. | 30.00 | Erie, Bethel Bapt. | 540.00 |
| Detroit, West Chicago Bapt. | 225.00 | | Holley, First Bapt. | 20.00 | Kettering, Cornerstone Bapt. | 20.00 | Erie, Faith Bapt. | 15.00 |
| Evart, Calvary Bapt. | 15.00 | | Hornell, South Side Bapt. | 100.00 | Kipton, Camden Bapt. | 60.00 | Erie, Garden Heights Bapt. | 60.00 |
| Fenton, First Bapt. | 50.00 | | Jamestown, Bethel Bapt. | 230.00 | LaGrange, LaGrange Bapt. | 332.00 | Galeton, Galeton Bapt. | 60.00 |
| Flint, Emmanuel Bapt. | 300.00 | | Jamesville, The Southwood Bapt. | 45.00 | Lancaster, First Bapt. | 205.00 | Grove City, First Bapt. | 263.34 |
| Flint, Faith Bapt. | 10.00 | | Johnson City, First Bapt. | 79.96 | Lima, Grace Bapt. | 170.00 | Hallstead, First Bapt. | 103.40 |
| Flint, Grace Bapt. | 180.00 | | Kennedy, Kennedy Bapt. | 130.00 | Lima, South Lima Bapt. | 309.07 | Indiana, Fundamental Bapt. Tab. | 69.43 |
| Flint, Riverdale Bapt. | 340.00 | | Lindley, Lindley Community | 5.00 | Litchfield, Litchfield Bapt. | 10.00 | Kittanning, Union Bapt. | 180.00 |
| Flint, South Bapt. | 290.00 | | Marathon, First Bapt. | 120.00 | Lorain, Euclid Ave. Bapt. | 136.40 | Meadville, Calvary Bapt. | 15.00 |
| Grand Rapids, Calvary Bapt. | 275.00 | | N. Tonawanda, First Bapt. | 200.00 | Lorain, Penfield Junction Bapt. | 560.00 | Meshoppen, Auburn Bapt. | 9.09 |
| Hazel Park, Tabernacle Bapt. | 240.00 | | Sherman, First Bapt. | 120.00 | Lorain, Trinity Bapt. | 139.50 | Saegertown, Calvary Bapt. | 60.00 |
| Jackson, Cascades Bapt. | 502.00 | | Sinclairville, Sinclairville Bapt. | 100.00 | Lorain, West Side Bapt. | 150.00 | Sharon, Evangel Bapt. | 50.00 |
| Kalamazoo, Bethel Bapt. | 450.00 | | Ohio: | | McDonald, First Bapt. | 250.00 | Sharon, Sharon Bapt. | 202.50 |
| Kalkaska, Calvary Bapt. | 60.00 | | Arcanum, Immanuel Bapt. | 390.00 | Medina, First Bapt. | 547.08 | Tidioute, Tidioute Bapt. | 8.00 |
| Lapeer, First Bapt. | 335.00 | | Ashland, Calvary Bapt. | 80.00 | Madeira, Madeira Bapt. | 25.00 | South Dakota: | |
| Marlette, Bible Bapt. | 110.00 | | Ashland, Faith Bapt. | 55.00 | Milford, Pleasant Hill Bapt. | 79.83 | Aberdeen, Bible Bapt. | 17.05 |
| Mayville, Mills Memorial Bapt. | 110.00 | | Avon, Avon Bapt. | 120.00 | Minford, Grace Bapt. | 200.00 | Rapid City, Bethel Bapt. | 21.30 |
| Midland, Calvary Bapt. | 300.00 | | Barberton, Norton Center Bapt. | 495.00 | Mt. Vernon, Emmanuel Bapt. | 26.66 | Spearfish, First Bapt. | 25.00 |
| Milan, Milan Bapt. | 110.00 | | Bedford, Bible Bapt. | 50.00 | New London, First Bapt. | 240.00 | Virginia: | |
| Milan, York Bapt. | 36.85 | | Bellefontaine, Calvary Bapt. | 630.00 | Niles, Evansville Bapt. | 80.00 | Vienna, Faith Bapt. | 100.00 |
| North Adams, N. Adams Bapt. | 15.00 | | Bellefontaine, First Reg. Bapt. | 230.00 | Niles, First Bapt. | 665.00 | Washington: | |
| North Branch, First Bapt. | 240.00 | | Berea, Berea Bapt. | 1,000.58 | N. Bloomfield, Champion Bapt. | 60.00 | Bainbridge Island, Bainbridge Bapt. | 10.00 |
| Ortonville, Ortonville Bapt. | 200.00 | | Berlin, First Bapt. | 5.00 | Northfield, Northfield Bapt. | 395.00 | Bellingham, Grace Bapt. | 27.43 |
| Owosso, Calvary Bapt. | 30.00 | | Bowling Green, First Bapt. | 120.00 | N. Madison, Bible Bapt. | 350.00 | Clarkston, First Bapt. | 44.55 |
| Oxford, First Bapt. | 60.00 | | Brunswick, First Bapt. | 250.00 | N. Royaltown, N. Royaltown Bapt. | 180.00 | Clarkston, First Bapt. | 44.55 |
| Portland, First Bapt. | 20.00 | | Caldwell, First Bapt. | 73.00 | Norwalk, Calvary Bapt. | 420.48 | Everson, Nooksack Valley Bapt. | 28.20 |
| Rochester, First Bapt. | 165.00 | | Canton, Whipple Ave. Bapt. | 100.00 | Norwood, Norwood Bapt. | 20.00 | Federal Way, Mirror Lake Bapt. | 27.68 |
| Saginaw, Grace Bapt. | 300.00 | | Carpenter, Carpenter Bapt. | 27.10 | Palmsville, Calvary Bapt. | 143.00 | Ferndale, First Bapt. | 25.00 |
| Saginaw, Immanuel Bapt. | 50.00 | | Cedarville, Grace Bapt. | 596.00 | Parma, First Bapt. | 240.00 | Moses Lake, Grace Bapt. | 45.74 |
| St. Clair, First Bapt. | 110.00 | | Centerville, Emmanuel Bapt. | 48.50 | Perry, Faith Bapt. | 50.00 | Pasco, First Bapt. | 147.00 |
| St. Louis, First Bapt. | 373.52 | | Cincinnati, Norwood Bapt. | 40.00 | Portsmouth, Temple Bapt. | 1,375.00 | Port Angeles, Calvary Bapt. | 10.00 |
| Vassar, First Bapt. | 60.00 | | Cleveland, Bethlehem Bapt. | 120.00 | Reynoldsburg, Bible Mission Bapt. | 196.00 | Seattle, Bethany Bapt. | 39.17 |
| Ypsilanti, Calvary Bapt. | 218.91 | | Cleveland, Brookside Bapt. | 135.00 | Rocky River, Grace Bapt. | 310.00 | Seattle, Tabernacle Bapt. | 50.00 |
| Minnesota: | | | Cleveland, Calvary Bapt. | 324.00 | Salem, Bethany Bapt. Fellowship | 70.00 | Sedro Woolley, First Bapt. | 29.12 |
| Austin, First Bapt. | 265.00 | | Cleveland, Cedar Hill Bapt. | 986.95 | Salem, Calvary Bapt. | 63.00 | Spokane, Euclid Ave. Bapt. | 46.46 |
| Austin, Grace Bapt. | 10.00 | | Cleveland, Hayden Ave. Bapt. | 384.64 | Sandusky, Calvary Bapt. | 360.00 | Wenatchee, Bible Bapt. | 29.16 |
| Faribault, First Bapt. | 112.50 | | Columbus, Central Bapt. | 63.05 | Sidney, Grace Bapt. | 80.00 | Wenatchee, First Bapt. | 30.45 |
| Kasson, Kasson Bapt. | 30.00 | | Columbus, Clintonville Bapt. | \$1,182.55 | S. Canaan, S. Canaan Bapt. | 120.00 | Washington, D. C.: | |
| Minneapolis, Emmanuel Bapt. | 40.00 | | Columbus, Faith Bapt. | 355.00 | Spencer, Spencer Bapt. | 174.23 | Capitol Bapt. | 30.00 |
| Rochester, Calvary Bapt. | 60.00 | | Columbus, Immanuel Bapt. | 2,059.00 | Spencerville, Open Door Bapt. | 14.00 | West Virginia: | |
| Missouri: | | | Columbus, Memorial Bapt. | 247.00 | Springfield, Blessed Hope Bapt. | 365.00 | Beckley, Mt. Tabor Bapt. | 75.00 |
| Overland, Lackland Rd. Bapt. | 120.00 | | Columbus, Pine Hills Bapt. | 55.00 | Springfield, Maranatha Bapt. | 165.00 | Charleston, Randolph St. Bapt. | 600.00 |
| St. Louis, Gateway Bapt. | 25.00 | | Coshocton, 1st Christian Bapt. | 228.93 | Strongsville, First Bapt. | 228.00 | Clendenin, Calvary Bapt. | 60.00 |
| Steffenville, Mt. Pleasant Bapt. | 65.00 | | Cuyahoga Falls, Graham Rd. Bapt. | 275.00 | Struthers, Struthers Bapt. | 165.00 | Mannington, Calvary Bapt. | 40.00 |
| Montana: | | | Dayton, Bethel Temple | 10.00 | Tallmadge, Fundamental Bapt. | 255.54 | Parkersburg, Bible Bapt. | 13.05 |
| Baker, First Bapt. | 64.95 | | Dayton, Bible Bapt. | 15.00 | Thurston, Fairfield Bapt. | 153.55 | S. Charleston, Spring Hill Bapt. | 220.00 |
| Billings, Grace Bapt. | 50.94 | | Dayton, The Brethren Church of | | Tiffin, Calvary Bapt. | 99.77 | Wisconsin: | |
| Columbia Falls, First Bapt. | 66.25 | | Huber Heights | 38.50 | Toledo, Bethel Bapt. | 19.00 | Menomonee Falls, Calvary Bapt. | 325.00 |
| Kalispell, Bethel Bapt. | 27.02 | | Dayton, Emmanuel Bapt. | 600.00 | Toledo, Emmanuel Bapt. | 717.32 | Merton, First Bapt. | 10.00 |
| Missoula, Emmanuel Bapt. | 99.45 | | Dayton, Ft. McKimley Bapt. | 50.00 | Toledo, Grace Bapt. | 75.00 | Racine, Grove Ave. Bapt. | 245.23 |
| Polson, First Bapt. | 29.15 | | Dayton, Gospel Tabernacle | 100.00 | Toledo, Lewis Ave. Bapt. | 28.00 | Union Grove, Union Grove Bapt. | 70.00 |
| | | | Dayton, Grace Gospel | 20.00 | Troy, Grace Bapt. | 325.00 | Verona, Memorial Bapt. | 545.00 |
| | | | Dayton, Kettering Bapt. | 120.00 | Troy, Troy Bapt. | 170.00 | Wauwatosa, Garfield Bapt. | 500.00 |
| | | | Dayton, Parkview Church of the | | Twinsburg, First Bapt. | 60.00 | | |
| | | | Nazarene | 20.00 | Urbana, Grace Bapt. | 40.00 | | |

ARM ME WITH JEALOUS CARE...

HELP ME TO WATCH AND PRAY



BOARD OF TRUSTEES

Mr. Charles Barth, farmer, Poland, Ohio
 Mr. Rudy Bedford, banker, Toledo, Ohio
 Mr. George L. Boyd, Certified Public Accountant, Bucyrus, Ohio
 Rev. William Brock, pastor, Columbus, Ohio
 Rev. William Brown, pastor, Dayton, Ohio
 Dr. Jack Cline, Professor at Ohio State, Columbus, Ohio
 Mr. John Draxler, engineer, Berea, Ohio executive engineer
 Mr. Arthur Dyke, businessman, Elyria, Ohio
 Mr. Vincent Gregg, General Electric plant manager, Fulton, Illinois
 Mr. Roy Guenin, plant manager, Laurinburg, North Carolina
 Dr. Hugh T. Hall, pastor, Elkhart, Indiana
 Dr. James T. Jeremiah, President of Cedarville College, Cedarville, Ohio
 Dr. George S. Milner, President of Milner Electric, Cleveland, Ohio
 Mr. Dale Murphy, restaurant owner, Waterloo, Iowa
 Mr. George F. O'Bryon, businessman, Eldora, Iowa
 Rev. Irwin Olson, Indiana G. A. R. B. C. State Representative, Indianapolis, Indiana
 Mr. William Patterson, retired businessman, Parma, Ohio
 Mr. James Richardson, contractor, Columbus, Ohio
 Rev. Gerald Smelser, Superintendent of the Cleveland Hebrew Mission, Cleveland, Ohio
 Rev. Robert Sumner, evangelist, Indianapolis, Indiana
 Rev. Earl Umbaugh, Ohio G. A. R. B. C. State Representative, Stow, Ohio
 Rev. Earl Willetts, pastor, Berea, Ohio
 Rev. Donald Woodby, pastor, Cleveland, Ohio
 Rev. W. Thomas Younger, pastor, Fort Wayne, Indiana

ADMINISTRATIVE STAFF

Dr. James T. Jeremiah, President
 Mr. Lee C. Turner, Director of Development
 Dr. Clifford W. Johnson, Academic Dean
 Mr. Richard T. McIntosh, Dean of Students
 Mr. Kenneth H. St. Clair, Business Manager





