

---

2-26-1988

## 1988 NAIA National Indoor Track & Field Championships

Cedarville University

Follow this and additional works at: [https://digitalcommons.cedarville.edu/track\\_field\\_programs](https://digitalcommons.cedarville.edu/track_field_programs)



Part of the [Higher Education Commons](#), [Sports Sciences Commons](#), and the [Sports Studies Commons](#)

---

### Recommended Citation

Cedarville University, "1988 NAIA National Indoor Track & Field Championships" (1988). *Men's and Women's Track & Field Programs*. 13.

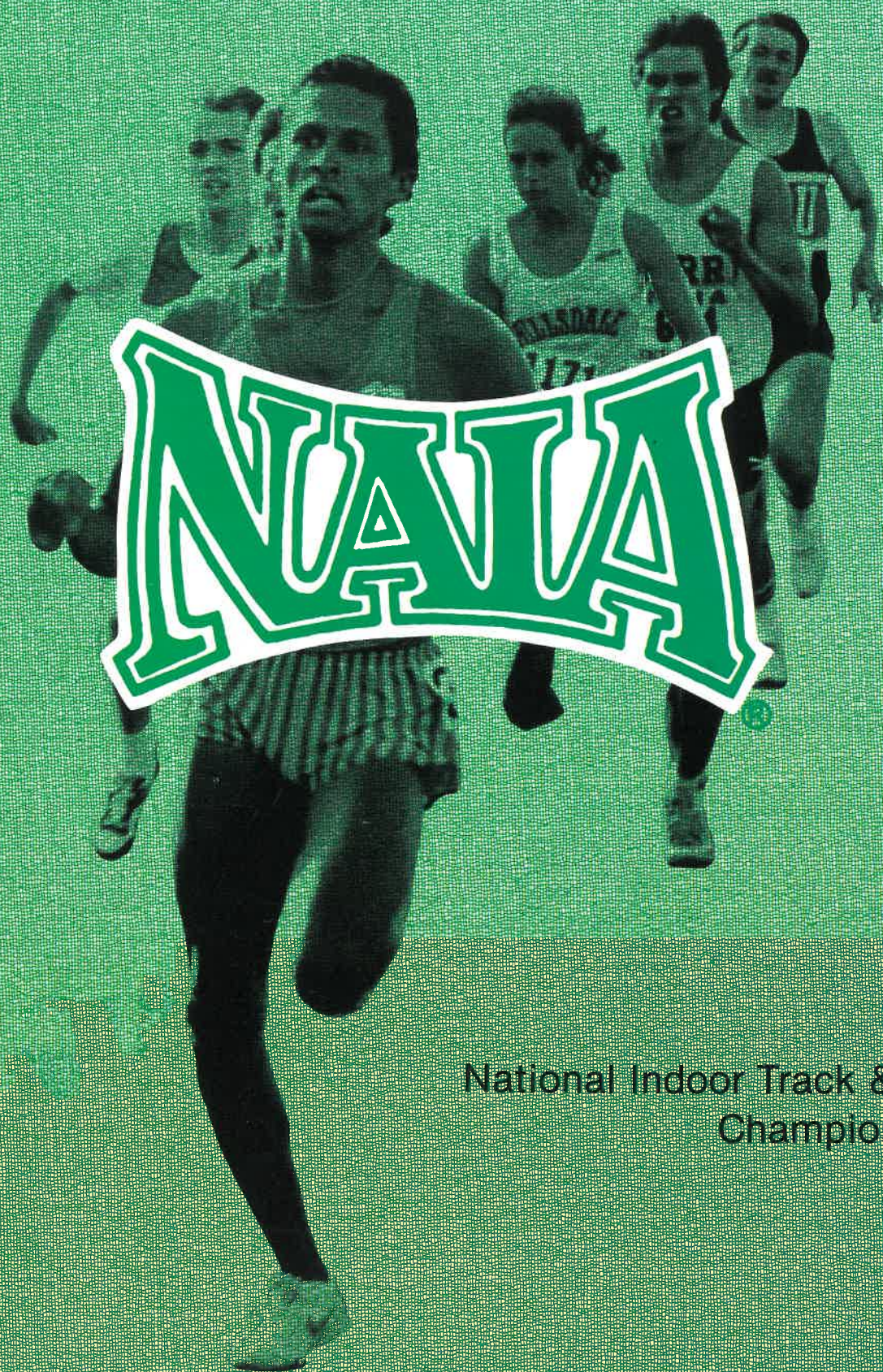
[https://digitalcommons.cedarville.edu/track\\_field\\_programs/13](https://digitalcommons.cedarville.edu/track_field_programs/13)

This Program is brought to you for free and open access by DigitalCommons@Cedarville, a service of the Centennial Library. It has been accepted for inclusion in Men's and Women's Track & Field Programs by an authorized administrator of DigitalCommons@Cedarville. For more information, please contact [digitalcommons@cedarville.edu](mailto:digitalcommons@cedarville.edu).



**23rd ANNUAL MEN'S  
8th ANNUAL WOMEN'S**

Price \$2.00



**National Indoor Track & Field  
Championships**

**MUNICIPAL AUDITORIUM, KANSAS CITY, MISSOURI, FEBRUARY 26-27, 1988**





# NATIONAL ASSOCIATION OF INTERCOLLEGIATE ATHLETICS



The National Association of Intercollegiate Athletics (NAIA) is a completely autonomous association, currently administering programs of intercollegiate athletics to nearly 500 fully-accredited colleges and universities of moderate enrollment. The fundamental tenet of the NAIA is that intercollegiate athletics is an integral part of the total educational program of the institution. This belief is strongly reflected in the governing documents, activities and organizational structure of the association.

## HISTORY AND PURPOSE

Established in 1940 as the National Association of Intercollegiate Basketball (NAIB), the NAIA emanated from a "National Small College Basketball Tournament" inaugurated in 1937 in Kansas City, Missouri. The conversion of the NAIB to the NAIA came in 1952 when the organization expanded beyond basketball and added national championship events in golf, outdoor track and field and tennis. Football, cross country, baseball and swimming and diving were added to the championship calendar in 1956, and wrestling (1958), soccer (1959), bowling (1962-78), gymnastics (1964-84), indoor track and field (1966), ice hockey (1968-83) and volleyball (1969-80) were later additions.

Of major significance to the NAIA was the establishment of the women's division within the association on August 1, 1980. The NAIA's decision to offer competitive opportunities and championships in women's athletics was passed by the membership following two years of study and proposals by an ad hoc committee on the implementation of a women's division in the NAIA. Currently, the association conducts 10 championship event programs for women in the sports of basketball, cross country, fast-pitch softball, gymnastics, indoor and outdoor track and field, soccer, swimming and diving, tennis and volleyball.

The initial purpose of the NAIA — to provide national championship athletic opportunities to institutions below the so-called "major" level — has indeed been well served. The association clearly outlines its own responsibilities and those of its members: a sound athletics program, administered and controlled by those responsible for the administration of the institution. This means direct supervision in caliber of competition, financing of the program and taking steps to assure that financial assistance is made available only through the institution and under the same general policies as aid to all students. In short, the basic premise is that the athletics program is a basic component of the overall educational process and not an entity apart.

## ADMINISTRATION

The NAIA is governed by two bodies. The Council of Presidents, composed of one president from each district, is responsible for fiscal matters, academic standards and supervision of the national staff. The 10-person National Executive Committee, elected by the membership, is responsible for organizing championship events and overseeing the committees and associations. The executive director conducts the day-to-day operation of the National Office, headquartered in Kansas City, Missouri. A full-time staff of 22 serves the membership at the national level.

The district is the basic unit of the NAIA. The association is organized into 32 geographical districts spread throughout the 50 states and a part of Canada. Each district is governed by a district executive committee, headed by the district chair. The district executive committee administers district playoff events, the champions of which qualify to compete in NAIA area and national championship competition.

Eligibility rules within the NAIA govern all play in all sports recognized by the association, not just postseason play. All eligibility guidelines must be adhered to by all members, including those holding dual affiliation with other associations. Certification of eligibility of all NAIA participants is accomplished through a network of people including faculty athletics representatives, district eligibility chairs, and the National Eligibility Committee.

## MEMBERSHIP

Any four-year college or university or upper-level, two-year institution in the United States and Canada that awards the bachelor's degree or equivalent may hold active NAIA membership. Active member institutions must be fully accredited by an appropriate accrediting agency or commission.

## OBLIGATION OF MEMBERSHIP

Member institutions must conduct their intercollegiate athletics programs with the standards of the regulatory associations in which they hold membership and the NAIA. They must pay their annual membership dues and be in support of the policies of the NAIA. Where institutional rules and standards are more stringent than those of the regulatory group or the NAIA, those rules and standards of the institution are recognized and supported by the NAIA.



**TABLE OF CONTENTS**

**INDOOR TRACK & FIELD PROGRAM**

Event Schedule..... 1  
 Welcome Messages..... 2  
 NAIA Track & Field Coaches Association..... 2  
 Meet Officials..... 3  
 Institutions Entered..... 4-5  
 Outstanding Performers..... 8

**NAIA INDOOR CHAMPIONSHIP EVENTS**

| EVENT NO.                             | PAGE |
|---------------------------------------|------|
| 1 Weight Throw.....                   | 6    |
| 2 Women's Shot Put.....               | 6    |
| 3 Women's High Jump.....              | 7    |
| 4 Women's Long Jump.....              | 8    |
| 5 Men's Shot Put.....                 | 9    |
| 6 Men's Triple Jump.....              | 10   |
| 7 Women's Triple Jump.....            | 10   |
| 8 Women's 60-Yard Hurdles.....        | 11   |
| 9 Men's 60-Yard High Hurdles.....     | 12   |
| 10 Women's 60-Yard Dash.....          | 13   |
| 11 Men's 60-Yard Dash.....            | 14   |
| 12 Men's High Jump.....               | 14   |
| 13 Women's 2-Mile Relay.....          | 15   |
| 14 Men's 2-Mile Relay.....            | 15   |
| 15 Women's 2-Mile Run.....            | 16   |
| 16 Men's 2-Mile Run.....              | 16   |
| 17 Men's Pole Vault.....              | 17   |
| 18 Men's Long Jump.....               | 18   |
| 19 Women's 440-Yard Dash.....         | 19   |
| 20 Men's 440-Yard Dash.....           | 20   |
| 21 Women's 880-Yard Run.....          | 21   |
| 22 Men's 880-Yard Run.....            | 21   |
| 23 Women's 3-Mile Run.....            | 22   |
| 24 Men's 3-Mile Run.....              | 22   |
| 25 Women's Mile Run.....              | 23   |
| 26 Men's Mile Run.....                | 23   |
| 27 Women's 600-Yard Run.....          | 24   |
| 28 Men's 600-Yard Run.....            | 24   |
| 29 Women's 1000-Yard Run.....         | 25   |
| 30 Men's 1,000-Yard Run.....          | 26   |
| 31 Women's Distance Medley Relay..... | 27   |
| 32 Men's Distance Medley Relay.....   | 27   |
| 33 Women's Mile Relay.....            | 28   |
| 34 Men's Mile Relay.....              | 28   |

**23rd ANNUAL NAIA NATIONAL INDOOR TRACK & FIELD CHAMPIONSHIPS MEN'S AND WOMEN'S DIVISIONS**

**SCHEDULE OF EVENTS**

**FRIDAY, FEBRUARY 26**

**Rolling Time**

|              |                            |
|--------------|----------------------------|
| ( 9:30 a.m.) | 1000 Women's Semis         |
| ( 9:50 a.m.) | 1000 Men's Semis           |
| (10:10 a.m.) | 3-Mile Run Men's Semis     |
| (10:50 a.m.) | 3-Mile Run Women's Semis   |
| (11:30 a.m.) | 2-Mile Run Men's Semis     |
| (12:05 p.m.) | 2-Mile Run Women's Semis   |
| (12:40 p.m.) | 440 Women's Semis          |
| ( 1:05 p.m.) | 440 Men's Semis            |
| ( 1:30 p.m.) | Mile Women's Semis         |
| ( 1:50 p.m.) | Mile Men's Semis           |
| ( 2:10 p.m.) | 880 Women's Semis          |
| ( 2:30 p.m.) | 880 Men's Semis            |
| ( 2:45 p.m.) | <b>CHANGE TRACK</b>        |
| ( 3:15 p.m.) | 60 Hurdles Women's Prelims |
| ( 3:40 p.m.) | 60 H-Hurdles Men's Prelims |
| ( 4:05 p.m.) | 60 Women's Prelims         |
| ( 4:25 p.m.) | 60 Men's Prelims           |
| ( 4:55 p.m.) | 60 Hurdles Women's Semis   |
| ( 5:10 p.m.) | 60 H-Hurdles Men's Semis   |
| ( 5:25 p.m.) | 60 Women's Semis           |
| ( 5:40 p.m.) | 60 Men's Semis             |
| 6:30 p.m.    | <b>OPENING CEREMONIES</b>  |
| 6:40 p.m.    | 60-Hurdles Women's FINALS  |
| 6:50 p.m.    | 60 H-Hurdles Men's FINALS  |
| 7:00 p.m.    | 60 Women's FINALS          |

|           |                                  |
|-----------|----------------------------------|
| 7:05 p.m. | 60 Men's FINALS                  |
| 7:10 p.m. | <b>CHANGE TRACK &amp; AWARDS</b> |
| 8:00 p.m. | 600 Women's Prelims              |
| 8:25 p.m. | 600 Men's Prelims                |
| 8:50 p.m. | 2-Mile Relay Women's FINALS      |
| 9:20 p.m. | 2-Mile Relay Men's FINALS        |

**FIELD EVENTS**

|            |                                       |
|------------|---------------------------------------|
| 9:00 a.m.  | Weight Throw                          |
| 10:00 a.m. | Shot Put - Women's Trials & FINALS    |
| 10:00 a.m. | High Jump - Women's Trials & FINALS   |
| 11:00 a.m. | Long Jump - Women's Trials & FINALS   |
| 12:30 p.m. | Shot Put - Men's Trials & FINALS      |
| 2:00 p.m.  | Triple Jump - Women's Trials & FINALS |
| 5:00 p.m.  | Triple Jump - Men's Trials & FINALS   |
| 7:15 p.m.  | High Jump - Men's Trials & FINALS     |

**SATURDAY, FEBRUARY 27**

|           |                           |
|-----------|---------------------------|
| 1:00 p.m. | Mile Relay Women's Semis  |
| 1:15 p.m. | Mile Relay Men's Semis    |
| 1:30 p.m. | <b>OPENING CEREMONIES</b> |
| 1:40 p.m. | 2-Mile Women's FINALS     |
| 1:55 p.m. | 2-Mile Men's FINALS       |
| 2:10 p.m. | 440 Women's FINALS        |
| 2:15 p.m. | 440 Men's FINALS          |
| 2:20 p.m. | 880 Women's FINALS        |
| 2:30 p.m. | 880 Men's FINALS          |
| 2:40 p.m. | 3-Mile Women's FINALS     |
| 3:00 p.m. | 3-Mile Men's FINALS       |
| 3:20 p.m. | Mile Women's FINALS       |
| 3:30 p.m. | Mile Men's FINALS         |
| 3:40 p.m. | 600 Women's FINALS        |
| 3:50 p.m. | 600 Men's FINALS          |
| 4:00 p.m. | 1000 Women's FINALS       |
| 4:10 p.m. | 1000 Men's FINALS         |

|           |                                  |
|-----------|----------------------------------|
| 4:15 p.m. | <b>AWARDS</b>                    |
| 4:45 p.m. | Dist-Medley Relay Women's FINALS |
| 5:25 p.m. | Dist-Medley Relay Men's FINALS   |
| 5:55 p.m. | Mile Relay Women's FINALS        |
| 6:05 p.m. | Mile Relay Men's FINALS          |
| 6:15 p.m. | <b>AWARDS</b>                    |

**FIELD EVENTS**

|           |                                  |
|-----------|----------------------------------|
| 2:00 p.m. | Pole Vault-Men's Trials & FINALS |
| 2:00 p.m. | Long Jump-Men's Trials & FINALS  |

**SPECIAL NOTE (Rolling Time):** During Friday's day session, a rolling time schedule will be used up until the opening ceremonies at 6:30 p.m., at which time the exact schedule will be followed. During rolling time, the time listed in parentheses is an approximate time for information only. Should a prelim or semi be cancelled, the remaining events would move up and participants must be ready. The above schedule is tentative. The final and official schedule will be included in all coaches packets at registration.

**AUDITORIUM TRACK FACTS**

**ONE LAP EQUALS 146.67 YARDS**

|                                       |
|---------------------------------------|
| 440-yard dash — 3 laps                |
| 600-yard run — 4 + laps               |
| 880-yard run — 6 laps                 |
| 1,000-yard run — 6¾ laps              |
| Mile run/relay — 12 laps (1760 yards) |
| 2-Mile run/relay — 24 laps            |
| Distance medley relay —               |
| 30 laps (880-440-1320-1760)           |
| 3-Mile — 36 laps                      |

**SCORING**

|                     |
|---------------------|
| 10 Points for First |
| 8 Points for Second |
| 6 Points for Third  |
| 4 Points for Fourth |
| 2 Points for Fifth  |
| 1 Point for Sixth   |



**JAMES HOUDESHHELL**  
*NAIA Nat. Ex. Comm.*  
*Findlay OH*



**JEFFERSON FARRIS**  
*Executive Director*  
*Kansas City, Missouri*



**TED LLOYD**  
*NAIAC President, 1987-88*  
*Harding AR*



**JOHN KNIGHT**  
*NAIA-TCA President, 1987-88*  
*Concordia NE*

James Houdeshell, assistant dean and chairperson of the division of education at Findlay College, Findlay, Ohio, is the NAIA National Executive Committee coordinator for the National Men's and Women's Indoor Track and Field Championships.

Houdeshell, the third vice president of the NAIA, also is the National Executive Committee coordinator for the Research Committee, the NAIA Coaches Association, and outdoor track and field.

All NAIA championship events and the NAIA's 35 standing committees and associations are under the direct supervision and control of the 10-member National Executive Committee. The committee is elected by the membership of the NAIA at the association's annual business meeting.

On behalf of the NAIA membership, its governing bodies and the National Office Staff, I would like to welcome all student-athletes, coaches and spectators to the 23rd Annual Men's and 8th Annual Women's National Indoor Track and Field Championships.

The NAIA is once again pleased to bring these championships to Municipal Auditorium, the first of six championships held in the Greater Kansas City area each year. Hundreds of NAIA athletes dream of coming to Kansas City whether it be for the indoor track and field, basketball or tennis championships. For these athletes who realize that dream, their championship experience is enriched through the efforts of dozens of people in the Kansas City community. Space does not allow me to thank all of these people individually, but I want anyone connected with these championships to know the NAIA appreciates your efforts

It is through the dedicated leadership of these people, and the coaches and administrators throughout the association, that the NAIA will continue to provide quality academic and athletic opportunities to the nearly one million students who attend our member institutions. Administrators, coaches, parents and alumni must work together to ensure all NAIA student-athletes can reach two goals at the end of their playing careers: the attainment of a college degree in their field of interest and the knowledge that they competed to the highest degree of their athletic ability.

Congratulations to all of the student-athletes competing at this national championship, and best of luck for an injury-free meet and a successful academic year

Jeff Farris  
NAIA Executive Director

Ted Lloyd, men's and women's cross country and track and field head coach at Harding University, Searcy, AR, is serving as president of the NAIA Coaches Association (NAIAC) for the 1987-88 academic year. Lloyd is past president of the NAIA-Track and Field Coaches Association and also is one of the NAIA representatives to the Track Athletic Congress (TAC).

A subsidiary of the NAIA, the NAIA Coaches Association is the largest organization of college coaches in the world with more than 4,000 active members. NAIAC is charged with the responsibility of carrying on a program of intercollegiate athletics which benefit member coaches of the organization.

NAIAC provides coaches in all sports with a strong voice in the establishment of rules and standards in each sport. The All-America and Scholar-Athlete programs are a function of NAIAC, subject to the policies and guidelines established by each individual sport association.

**NAIA TRACK & FIELD COACHES ASSOCIATION**

- PRESIDENT..... John Knight, Concordia College, Seward, NE
- FIRST VICE PRESIDENT..... Diane Van Arsdalen, Hillsdale College, Hillsdale, MI
- SECOND VICE PRESIDENT..... Randy Heath, Oklahoma Christian College, Oklahoma City, OK
- SECRETARY..... Terry Franson, Azusa Pacific University, Azusa, CA
- PAST PRESIDENT..... Bob Gravett, Ouachita Baptist University, Arkadelphia, AR
- EXECUTIVE COMMITTEE COORDINATOR..... James Houdeshell, Findlay College, Findlay, OH
- NATIONAL STAFF LIAISON..... Wally Schwartz, NAIA National Office, Kansas City, Missouri

# NAIA MEET OFFICIALS



**CHARLIE RUTER**  
*Announcer*



**KELLY RANKIN**  
*Head Starter*



**KEN GRABER**  
*Recall Starter*



**JERRY REICHART**  
*Recall Starter*



**MARY ITEN**  
*Kearney State NE  
Games Committee*



**WALLY SCHWARTZ**  
*Meet Director*



**TED LLOYD**  
*Harding AR  
Games Committee*



**JIM MACK SAWYER**  
*Henderson State AR  
Games Committee*



**JIM KROB**  
*Bethany KS  
Games Committee*

## NAIA INDOOR TRACK & FIELD MEET OFFICIALS — 1988

MEET DIRECTOR.....Wally Schwartz  
STARTER.....Kelly Rankin  
HEAD ANNOUNCER.....Charlie Ruter  
RECALL STARTER.....Ken Graber

RECALL STARTER.....Jerry Reichart  
HEAD REFEREE.....Don Spinas  
FIELD REFEREE.....Paul Parent  
WEIGHT REFEREE.....Jim Krob

### Games Committee

Ted Lloyd, Harding University AR  
Jim Mack Sawyer, Henderson State AR  
Jim Krob, Fort Hays State KS  
Mary Iten, Kearney State NE

### Clerks of the Course

Joe Baker  
Rocky Rorabaugh  
Denise Wixxon

### Finish Line

Francis Swaim  
Chuck Seawood  
Herm Wilson  
Ray Daniels

### Lap Checkers

Keith Daniels  
Bill Summa  
Ed Ellis  
Nancy Holliday  
Verlyn Schmidt  
Ted Allen  
Steve Barton  
Carl Sniffen  
David Vaughn

### Awards

Glen Davies  
Betty Schwartz

### Curve Inspectors

Bob Gragg  
David Bertholf  
Rich Ayers  
Tony Wichmann  
A.L. Whitney  
Kevin Harris  
Paul Platt  
Willie Mahone

### Overhead Clock Operator

Maurice Barker

### Pole Vault

Bud Yazel  
Ken Williams

### Long & Triple Jump

John Chavez  
Al Idrisi

### High Jump

Joe Ensminger  
Bryan Harris

### Shot Put

Tom Dixon  
Kipp VanCamp  
Kirt Borneman

### Acctrack Reader

Cliff Sharp  
Suzanne Umphrey

### Certified Trainers

Ron Cooper, Ottawa University KS  
Eric Walsler, Mid America Nazarene KS  
Jeff Dance, Baker University KS

### Computer Operator

Cindy Glass

### Assistants

From Wyandotte High School, KCK

# INSTITUTIONS ENTERED

## 1988 NAIA MEN'S INDOOR TRACK CHAMPIONSHIPS

| SCHOOL                   | COACH              | SHIRT/SHORTS          | RUNNING NUMBERS |
|--------------------------|--------------------|-----------------------|-----------------|
| Adams State CO           | Tom Lionvale       | Green-Yellow/Green    | 674-691         |
| Anderson IN              | Larry Maddox       | Orange/Black          | 1-9             |
| Austin College TX        | Vance Morris       | Red/Gold              | 334-337         |
| Azusa Pacific CA         | Terry Franson      | Orange/Black          | 291-308         |
| Baker KS                 | Dennis Weber       | White/Black           | 310-315         |
| Bemidji State MN         | Dick Irwin         | Green/Green           | 280-282         |
| Bethany KS               | John Charles       | Blue/Blue             | 559-566         |
| Biola CA                 | Gerald Masterson   | Red/White             | 611-620         |
| Cedarville OH            | Elvin King         | Gold/Navy             | 18-27           |
| Central Arkansas         | Richard Martin     | Purple/Purple         | 10-16           |
| Central Washington       | Walter Arlt        | Black/Black           | 486-487         |
| Central State OK         | Paul Parent        | Blue-White-Gold/Blue  | 471-484         |
| Chadron State NE         | Jeff Briggs        | Maroon/White-Black    | 327-333         |
| Concordia NE             | John Knight        | White/Navy            | 28-41           |
| Dakota State SD          | Buzz Stevenson     | Gold/Blue             | 488-490         |
| Dakota Wesleyan SD       | Larry Buffington   | White/Blue            | 362-363         |
| Doane NE                 | Fred Beile         | Orange-White/Black    | 43-58           |
| Emporia State KS         | Mark Stanbrough    | Gold-White/Black      | 523-536         |
| Edward Waters FL         | Thomas Witherspoon | White/Orange-Purple   | 632-642         |
| Findlay OH               | Marc Arce          | White/Orange          | 74              |
| Fort Hays State KS       | Jim Krob           | White-Black/Black     | 60-72           |
| Grand View IA            | Craig Rover        | Red/Red               | 693-695         |
| Harding AR               | Ted Lloyd          | Yellow/Black          | 392-409         |
| Hastings NE              | Dale Timperley     | Cardinal-Gray/Gray    | 252-263         |
| Henderson State AR       | J.M. Sawyer        | Red/Red               | 568-576         |
| Hillsdale MI             | Bill Lundberg      | Blue-White/Blue       | 651-672         |
| Iowa Wesleyan            | Steve Johnson      | White/Purple          | 546-557         |
| Kearney State NE         | Lyle Claussen      | Blue/Gold             | 265-278         |
| Lubbock Christian TX     | David Conder       | White/Red             | 445-456         |
| Malone OH                | Jack Hazen         | Navy                  | 174-183         |
| Manchester IN            | Steve Jungbauer    | Black/Gold            | 283-289         |
| Marion IN                | John Foss          | Red/White-Black       | 357-361         |
| McPherson KS             | Dan Hoffman        | Cardinal/White        | 622-630         |
| Midland Lutheran NE      | Jim McMahon        | White/Black           | 95-102          |
| Mid America Nazarene KS  | Curt Ammons        | Red-White/Red         | 600-601         |
| Missouri Baptist         | Clark Wille        | White/Red             | 154-172         |
| Missouri Valley          | Steve Lucito       | Orange/Purple         | 351-355         |
| Moorhead State MN        | Elliot Kramsky     | Black/Red-White       | 75-93           |
| Nebraska Wesleyan        | Ted Bulling        | Gold-Brown/Gold       | 698-714         |
| North Florida            | Bob Symons         | Blue/Silver           | 243-250         |
| Northwestern IA          | Barry Brandt       | Red/White-Red         | 104-111         |
| Northern State SD        | Michael Pieper     | Maroon/Maroon         | 186-188         |
| Oklahoma Baptist         | Jeff Potter        | White/Green           | 189-200         |
| Oklahoma Christian       | Randy Heath        | Maroon/Maroon         | 411-422         |
| Ozarks, School of, MO    | Robert Osburn      | White/White           | 696-697         |
| Ouachita Baptist AR      | Bob Gravett        | White/Purple          | 113-127         |
| Park MO                  | Dave McCalley      | Gold/Maroon           | 317-325         |
| Pittsburg State KS       | Russ Jewett        | White-Red/Gold        | 458-469         |
| Prairie View TX          | Hoover Wright      | White/Purple          | 502-521         |
| Rio Grande OH            | Bob Willey         | White/Red             | 602-609         |
| Saginaw Valley MI        | James Nesbitt      | White/Red             | 202-223         |
| Southern Arkansas        | Richard Carter     | Royal Blue/Gold       | 644-649         |
| Southern Colorado        | Chuck Haering      | White/Red             | 139-141         |
| Southern Oregon          | Monty Cartwright   | Black/Black           | 595-599         |
| Southern New Orleans, LA | Artis Davenport    | Red/Black             | 130-137         |
| Southwestern KS          | Jim Helmer         | White/Purple          | 424-443         |
| Spring Arbor MI          | Scott Cole         | Gold/Navy             | 501             |
| Tabor KS                 | Gary Quinn         | Blue/Blue             | 364-365         |
| Tarkio MO                | Gary White         | White/Purple          | 578-593         |
| Tarleton State TX        | Carl Pleasant      | Purple/White          | 349-350         |
| Tri-State IN             | Dick Gollnick      | Blue/White-Red        | 540-545         |
| Walsh OH                 | Dan McCallion      | White/Maroon          | 142-147         |
| Wayland Baptist TX       | John Creer         | Royal/Royal           | 366-390         |
| Wayne State NE           | LeRoy Simpson      | Gold/Black            | 538-539         |
| West Virginia State      | Glover Smiley      | Black-Gold/Black-Gold | 615-624         |
| Western Oregon           | Don Spinaz         | White/Red             | 491-499         |
| Western State Co         | Duane Vandebusch   | Red/Red               | 716-727         |
| Whitworth WA             | Arnie Tyler        | Red-White/Black       | 225-229         |
| William Jewell MO        | Larry Hamilton     | Red/Black             | 149-152         |
| Wisconsin-Eau Claire     | Mel Lewis          | Yellow/Blue           | 236-241         |
| Wisconsin-Milwaukee      | F.P. Markel        | Black/Black           | 338-347         |
| Wisconsin-River Falls    | Warren Kinzel      | White/Black           | 139-146         |

# INSTITUTIONS ENTERED

## 1988 NAIA WOMEN'S INDOOR TRACK CHAMPIONSHIPS

| SCHOOL                  | COACH              | SHIRT/SHORTS        | RUNNING NUMBERS |
|-------------------------|--------------------|---------------------|-----------------|
| Aquinas MI              | Jeff Brazier       | Red/Red             | 729-731         |
| Azusa Pacific CA        | Terry Franson      | Orange/Black        | 784-785         |
| Baker KS                | Dennis Weber       | Orange/Black        | 786-791         |
| Bemidji State MN        | Dick Irwin         | Green/Green         | 1053-1059       |
| Bethany KS              | John Charles       | Blue/Blue           | 732-735         |
| Cedarville OH           | Elvin King         | Gold/Navy           | 984-990         |
| Central Arkansas        | Sallie Dalton      | Purple/White        | 979-983         |
| Central Washington      | Keith Kellogg      | Black/Black         | 743-744         |
| Chadron State NE        | Jeff Briggs        | Maroon-White/Black  | 776-779         |
| Concordia NE            | John Knight        | White/Navy          | 991-1000        |
| Doane NE                | Fred Beile         | White/Black         | 1001-1007       |
| Emporia State KS        | Mark Stanbrough    | Gold-White/Black    | 826-834         |
| Fort Hays State KS      | Jim Krob           | Gold-White/Black    | 1008-1018       |
| Harding AR              | Ted Lloyd          | Gold/Black          | 1083-1091       |
| Hastings NE             | Patty Gleason      | Cardinal-Gray/Gray  | 907-913         |
| Hillsdale MI            | Diane VanArsdalen  | White/Royal         | 914-931         |
| Iowa Wesleyan           | Steven Johnson     | Purple-White/Purple | 747-752         |
| Kearney State NE        | Mary Iten          | Royal/Blue          | 932-941         |
| Malone OH               | Scott Armstrong    | Blue-White/Blue     | 818-825         |
| Manchester IN           | Steve Jungbauer    | Black/Gold          | 792             |
| McPherson KS            | Dan Hoffman        | Cardinal/White      | 745-746         |
| Mid America Nazarene KS | Curt Ammons        | Blue-White/Blue     | 756             |
| Midland Lutheran NE     | Jim McMahon        | White/Black         | 1019-1029       |
| Missouri Baptist        | Clark Wille        | White/Blue          | 964-977         |
| Missouri Valley         | Steven Lucito      | Orange/Purple       | 773-775         |
| Moorhead State MN       | Randy Smith        | Red/Red             | 942-950         |
| Nebraska Wesleyan       | Ted Bulling        | Brown/Gold          | 798-806         |
| North Florida           | Bob Symons         | Blue/Silver         | 891-897         |
| Northern State SD       | Michael Peiper     | Maroon/Maroon       | 766-767         |
| Northwestern IA         | Barry Brandt       | Red-White/Red       | 1028-1033       |
| Oklahoma Baptist        | Jeff Potter        | Gold/Green          | 768-769         |
| Oklahoma Christian      | Randy Heath        | Maroon/Maroon       | 1075-1082       |
| Park MO                 | Dave McCalley      | Gold/Maroon         | 780-783         |
| Pittsburg State KS      | Russ Jewett        | Red/Gold            | 835-843         |
| Prairie View TX         | Barbara Jacket     | Purple/Gold         | 861-879         |
| Rio Grande OH           | Bob Willey         | White/Red           | 753-755         |
| Saginaw Valley MI       | James Nesbitt      | Red/Red             | 951-963         |
| Southern New Orleans LA | Artis Davenport    | Red/Black           | 793-795         |
| Southern Oregon State   | Monty Cartwright   | Black/Black         | 757-759         |
| Southwestern KS         | Jim Helmer         | White/Purple        | 770-772         |
| Tabor KS                | Gary Quinn         | Blue/Blue           | 760-763         |
| Tarkio MO               | Gary White         | White/Purple        | 880-890         |
| Wayland Baptist TX      | John Creer         | Royal/Royal         | 844-859         |
| Wayne State NE          | LeRoy Simpson      | Gold/Black          | 736-737         |
| Western Oregon State    | Don Spinas         | White-Red-Gray/Red  | 738-742         |
| Western State CO        | Duane Vandenbusche | Red/White-/Red      | 807-817         |
| Whitworth WA            | Arnie Tyler        | Red-White/Black     | 765             |
| William Jewell MO       | Larry Hamilton     | Red/Black           | 797             |
| Winona State MN         | Marjorie Moravec   | White/Purple        | 796             |
| Wisconsin-Eau Claire    | Mel Lewis          | Yellow/Blue         | 898-906         |
| Wisconsin-Milwaukee     | F.P. Markel        | Black/Black         | 1061-1074       |
| Wisconsin-Parkside      | Mike Dewitt        | Green/Black         | 1034-1051       |





# EVENT 1

# WEIGHT THROW Friday, 9:00 a.m.



### Past Champions

1981 Doug Barnett, Azusa Pacific CA, 59-1¼  
 1982 Doug Barnett, Azusa Pacific CA, 65-2¼  
 1983 Doug Barnett, Azusa Pacific CA, 17.02 (55-10)  
 1984 Phil Mann, Azusa Pacific CA, 19.68 (64-6¼)  
 1985 Christian Okoye, Azusa Pacific CA, 19.49 (63-11½)  
 1986 Mike Maynard, Azusa Pacific CA, 19.76 (64-10)  
 1987 Christian Okoye, Azusa Pacific CA, 20.25 (66-5¼)

**WEIGHT THROW RECORDS**  
**NAIA — 20.25 (66-5¼), Christian Okoye, Azusa Pacific CA, 1987**



**CHRISTIAN OKOYE**  
 Azusa Pacific CA  
 NAIA Record Holder

| NO. | NAME          | GR | SCHOOL                  | MARK     | NO. | NAME           | GR | SCHOOL                  | MARK     |
|-----|---------------|----|-------------------------|----------|-----|----------------|----|-------------------------|----------|
| 305 | Steve Prokop  | Sr | Azusa Pacific CA        | 61-03.0  | 229 | Stuart Woods   | Jr | Whitworth WA            | 46-08.0  |
| 303 | Ade Olukoju   | Sp | Azusa Pacific CA        | 54-03.0  | 215 | Rod Rytlewski  | Sp | Saginaw Valley State MI | 46-00.0  |
| 296 | Tommy Daniel  | Sp | Azusa Pacific CA        | 53-05.0  | 241 | Mike Ashburn   | Fr | Wisconsin-Eau Claire    | 45-02.0  |
| 559 | Rob Bergstrom | Sr | Bethany KS              | 52-11.25 | 227 | Chris Ringer   | Sr | Whitworth WA            | 44-10.0  |
| 225 | Tim Jacobson  | Sr | Whitworth WA            | 52-10.0  | 665 | Lee Ratliff    | Sr | Hillsdale MI            | 44-06.0  |
| 323 | Benson Owere  | Jr | Park MO                 | 51-01.5  | 68  | Mike McMillin  | Sr | Fort Hays State KS      | 44-04.0  |
| 206 | Rich Canole   | Jr | Saginaw Valley State MI | 50-06.5  | 365 | Don Rains      | Fr | Tabor KS                | 41-07.25 |
| 226 | Rich Merrill  | Sr | Whitworth WA            | 49-08.0  | 529 | Troy Fowler    | Sp | Emporia State KS        | 39-09.0  |
| 236 | Ron McConnell | Sr | Wisconsin-Eau Claire    | 47-10.0  | 512 | Roderick Jones | Sp | Prairie View A&M TX     | NM       |

Finals Won by \_\_\_\_\_, 2 \_\_\_\_\_, 3 \_\_\_\_\_, 4 \_\_\_\_\_,  
 5 \_\_\_\_\_, 6 \_\_\_\_\_, Distance \_\_\_\_\_



# EVENT 2

# WOMEN'S SHOT PUT Friday, 10:00 a.m.



### Past Champions

1981 Karen Waddell, Prairie View TX, 46-8½  
 1982 Karen Waddell, Prairie View TX, 47-10¼  
 1983 Karen Waddell, Prairie View TX, 14.93 (49-4)  
 1984 LuAnn Soderling, Nebraska Wesleyan, 15.06 (49-5)  
 1985 Beth Stuart, Kearney St. NE, 14.00 (45-11¼)  
 1986 Sharon Harrison, Prairie View TX, 15.20 (49-10)  
 1987 Beth Stuart, Kearney St. NE, 15.44 (50-8)

**SHOT PUT RECORDS**  
**NAIA — 15.44 (50-8), Beth Stuart, Kearney State NE, 1987**  
**AUDITORIUM — 15:44 (50-8), Beth Stuart, Kearney State NE, 1987**



**BETH STUART**  
 Kearney State NE  
 NAIA Record Holder

| NO.  | NAME             | GR | SCHOOL                  | MARK     | NO.  | NAME           | GR | SCHOOL                  | MARK     |
|------|------------------|----|-------------------------|----------|------|----------------|----|-------------------------|----------|
| 1057 | Liz Mulvihill    | Sr | Bemidji State MN        | 48-06.0  | 898  | Kelly Bowe     | Fr | Wisconsin-Eau Claire    | 40-00.0  |
| 869  | Sharon Harrison  | Sr | Prairie View A&M TX     | 45-08.0  | 956  | Dawn Draves    | Sp | Saginaw Valley State MI | 39-11.5  |
| 954  | Sue Bretenitz    | Sp | Saginaw Valley State MI | 44-08.5  | 746  | Mindy Miller   | Fr | McPherson KS            | 39-11.0  |
| 1025 | Connie Meyer     | Fr | Midland Lutheran NE     | 43-07.0  | 885  | Julie McKinney | Sp | Tarkio MO               | 39-09.75 |
| 863  | Mia Bonds        | Jr | Prairie View A&M TX     | 43-02.0  | 759  | Debie Settell  | Jr | Southern Oregon State   | 39-05.0  |
| 848  | Lorette Goodwin  | Sp | Wayland Baptist TX      | 42-10.0  | 977  | Tracey Yount   | Sp | Missouri Baptist        | 39-04.0  |
| 795  | Tonya Thompson   | Fr | Southern New Orleans LA | 42-05.0  | 777  | Jenifer Proud  | Jr | Chadron State NE        | 39-01.5  |
| 1054 | Patti Fitzgerald | Sp | Bemidji State MN        | 42-03.0  | 1014 | Kathy Holling  | Jr | Fort Hays State KS      | 39-00.0  |
| 829  | Lisa Farris      | Jr | Emporia State KS        | 42-03.0  | 907  | Stacy Dieckman | Fr | Hastings NE             | 38-08.0  |
| 874  | Rhonda Rogers    | Jr | Prairie View A&M TX     | 41-11.5  | 772  | Joyce Fellers  | Jr | Southwestern KS         | 38-02.0  |
| 796  | Rachel Hamilton  | Sr | Winona State MN         | 41-09.5  | 995  | Debbie Gians   | Fr | Concordia NE            | 37-07.0  |
| 758  | Joi Tipton       | Sp | Southern Oregon State   | 41-09.0  | 884  | Kim McKenzie   | Sp | Tarkio MO               | 36-09.0  |
| 785  | Joey Classen     | Jr | Azusa Pacific CA        | 40-10.0  | 883  | Joan Magee     | Jr | Tarkio MO               | 36-05.0  |
| 921  | Yvonne Laderach  | Jr | Hillsdale MI            | 40-09.25 | 801  | Karen Oerter   | Sr | Nebraska Wesleyan       | 36-04.0  |
| 948  | Jenny Petron     | Sr | Moorhead State MN       | 40-06.0  | 737  | Diane Asay     | Sp | Wayne State NE          | NM       |

Finals Won by \_\_\_\_\_, 2 \_\_\_\_\_, 3 \_\_\_\_\_, 4 \_\_\_\_\_,  
 5 \_\_\_\_\_, 6 \_\_\_\_\_, Distance \_\_\_\_\_



# WOMEN'S HIGH JUMP

Friday, 10:00 a.m.

# EVENT

3



Sponsored by  
**Friends of the NAIA**

### Past Champions

1981 Vivian Garner, Jackson State MS, 5-7  
 1982 Paula Benne, Mid-America Nazarene KS, 5-5  
 1983 Leanna Jackson, Adams State CO, 1.80 (5-11)  
 1984 Sybil Reddick, Texas Southern, 1.70 (5-7)  
 1985 Alberta Thomas, School of the Ozarks MO,  
 1.73 (5-8)  
 1986 Erika Hohenstein, Moorhead State MN, 1.70 (5-7)  
 1987 Sandy Andrews, Midland Lutheran NE, 1.70 (5-7)



**LEANNA JACKSON**  
 Adams State CO  
 NAIA Record Holder

**HIGH JUMP RECORDS**  
**NAIA — 1.80 (5-11), Leanna Jackson,**  
 Adams State, CO, 1983  
**AUDITORIUM — 6-0, Joni Huntley, Pacific Coast Club,**  
 1981

| NO.  | NAME               | GR | SCHOOL                  | MARK     | NO.  | NAME              | GR | SCHOOL              | MARK   |
|------|--------------------|----|-------------------------|----------|------|-------------------|----|---------------------|--------|
| 965  | Kelly Cox          | Jr | Missouri Baptist        | 5-09.75  | 947  | Jean McCoy        | Sr | Moorhead State MN   | 5-04.0 |
| 1003 | Pam Ruge           | Jr | Doane NE                | 5-08.0   | 769  | Stephany Tiner    | Sp | Oklahoma Baptist    | 5-03.5 |
| 757  | Melanie Byrne      | Fr | Southern Oregon State   | 5-08.0   | 835  | Kim Frakes        | Fr | Pittsburg State KS  | 5-02.0 |
| 826  | Trish Bahr         | Sr | Emporia State KS        | 5-07 1/2 | 832  | Jean Kolarik      | Jr | Emporia State KS    | 5-02.0 |
| 919  | Michelle Kowalski  | Sr | Hillsdale MI            | 5-06.0   | 818  | Theresa Dyer      | Fr | Malone OH           | 5-02.0 |
| 906  | Sandy Nestle       | Fr | Wisconsin-Eau Claire    | 5-06.0   | 803  | Lisa Riecken      | Jr | Nebraska Wesleyan   | 5-02.0 |
| 861  | Raquel Andrews     | Sp | Prairie View A&M TX     | 5-06.0   | 776  | Lynette Landrigan | Jr | Chadron State NE    | 5-02.0 |
| 783  | Genesis Livingston | Sr | Park MO                 | 5-06.0   | 1017 | Kari Williams     | Sp | Fort Hays State KS  | 5-00.0 |
| 857  | Denise Stegink     | Sr | Wayland Baptist TX      | 5-05.75  | 1009 | Karen Borgstedt   | Sp | Fort Hays State KS  | 5-00.0 |
| 959  | Marcia Killian     | Sp | Saginaw Valley State MI | 5-05.5   | 897  | Leinsea Thompson  | Jr | North Florida       | 5-00.0 |
| 739  | Kelley Lovejoy     | Jr | Western Oregon State    | 5-05.0   | 886  | Kim McPherson     | Sp | Tarkio MO           | 5-00.0 |
| 851  | Kim Kayler         | Sp | Wayland Baptist TX      | 5-04.5   | 753  | Amy Dixon         | Sp | Rio Grande OH       | 4-10.0 |
| 842  | Billie Jo Urban    | Jr | Pittsburg State KS      | 5-04.5   | 1068 | Natalie Malin     | Jr | Wisconsin-Milwaukee | NM     |
| 1005 | Brenda Stinson     | Jr | Doane NE                | 5-04.0   |      |                   |    |                     |        |

Finals Won by \_\_\_\_\_, 2 \_\_\_\_\_, 3 \_\_\_\_\_, 4 \_\_\_\_\_,  
 5 \_\_\_\_\_, 6 \_\_\_\_\_, Height \_\_\_\_\_

**All Nations Flag Co., Inc.**  
*Custom flags & banners  
 are our specialty!*

From the NAIA Championship Banners to corporate and personalized flags, All Nations provides the best. We can help you create the perfect flag or banner for your needs. Write or call for quote.

(816)  
**842-8798**  
 CUSTOM DEPT.  
 COMMERCIAL  
 118 W. 5th St.

(816)  
**842-8475**  
 RETAIL  
 114 W. 5th St.  
 Since 1968

WATTS # 800/533-3524 (All Nations Flag Co. Inc.)

*"The real reason Kansas City  
 is still famous for steak"*



**RESTAURANT  
 AND COCKTAIL LOUNGE**

**842-2866**

At the Stockyards by the  
 Kemper Arena

AMERICAN EXPRESS • VISA  
 MASTERCARD • GOLDEN OX  
 CARTE BLANCHE • DINERS CLUB

1600 Genesee, Kansas City, Mo.





**EVENT**  
4

**WOMEN'S LONG JUMP**  
Friday, 11:00 a.m.



**KATHRENE WALLACE**  
Texas Southern  
NAIA Record Holder

**LONG JUMP RECORDS**  
NAIA—6.28 (20-7½), Kathrene Wallace, Texas Southern, 1984  
AUDITORIUM—21-2½, Kathy McMillan, Tennessee State, 1981

**Past Champions**

1981 Lori Risenhoover, Adams State CO, 18-7  
1982 Thomasina Busch, Hampton Institute VA, 19-4¾  
1983 Kathrene Wallace, Texas Southern, 6.27 (20-7)  
1984 Kathrene Wallace, Texas Southern, 6.28 (20-7½)  
1985 Lori Risenhoover, Adams State CO, 5.99 (19-8)  
1986 Comfort Igeh, Wayland Baptist TX, 6.21 (20-4¾)  
1987 Michelle Neal, Prairie View TX, 5.97 (19-7)

| NO.  | NAME             | GR | SCHOOL                  | MARK     | NO.  | NAME            | GR | SCHOOL                  | MARK     |
|------|------------------|----|-------------------------|----------|------|-----------------|----|-------------------------|----------|
| 934  | Carrie Hoehner   | Fr | Kearney State NE        | 19-02.5  | 939  | Kristie Walz    | Sr | Kearney State NE        | 17-00.25 |
| 850  | Comfort Igeh     | Sr | Wayland Baptist TX      | 19-00.25 | 963  | Verlynda Wilson | Sp | Saginaw Valley State MI | 17-00.0  |
| 859  | Denise Williams  | Sr | Wayland Baptist TX      | 19-00.0  | 1075 | Gwen Beauford   | Fr | Oklahoma Christian      | 16-10.0  |
| 1062 | Cathy Davis      | Sp | Wisconsin-Milwaukee     | 18-11.0  | 932  | Diane Axmann    | Jr | Kearney State NE        | 16-09.25 |
| 878  | Kimolyn Vanzant  | Sr | Prairie View A&M TX     | 18-10.5  | 980  | LeAnn Collums   | Fr | Central Arkansas        | 16-09.0  |
| 777  | Jenifer Proud    | Jr | Chadron State NE        | 18-09.5  | 822  | Lealie Newport  | Fr | Malone OH               | 16-09.0  |
| 861  | Raquel Andrews   | Sp | Prairie View A&M TX     | 18-06.5  | 1001 | Heidi Fishler   | Fr | Doane NE                | 16-08.0  |
| 868  | Patti Harris     | 1  | Prairie View A&M TX     | 18-02.0  | 754  | Kim Janey       | Sp | Rio Grande OH           | 16-07.5  |
| 879  | Chandra Williams | Fr | Prairie View A&M TX     | 18-01.0  | 839  | Tracy Ivy       | Jr | Pittsburg State KS      | 16-07.0  |
| 809  | Gaye Lynn Farney | Fr | Western State CO        | 18-00.0  | 778  | Janet Smith     | Fr | Chadron State NE        | 16-05.0  |
| 793  | Cynthia Ball     | Fr | Southern New Orleans LA | 17-10.0  | 798  | Sue Anderson    | Sr | Nebraska Wesleyan       | 16-04.0  |
| 953  | Barb Bishop      | Sr | Saginaw Valley State MI | 17-08.0  | 881  | Belinda Flores  | Fr | Tarkio MO               | 15-08.0  |
| 920  | Lisa Ladd        | Fr | Hillsdale MI            | 17-06.0  | 1040 | Tracy Karshna   | Fr | Wisconsin-Parkside      | 15-06.0  |
| 1021 | Janeen Connett   | Sp | Midland Lutheran NE     | 17-05.0  | 988  | Laura Whaley    | Jr | Cedarville OH           | 14-05.0  |
| 872  | Tephanie Mack    | Fr | Prairie View A&M TX     | 17-05.0  | 1073 | Jori Whitford   | Fr | Wisconsin-Milwaukee     | NM       |
| 842  | Billie Jo Urban  | Jr | Pittsburg State KS      | 17-03.00 | 854  | Barbara Moore   | Fr | Wayland Baptist TX      | NM       |
| 936  | Barb Miller      | Sp | Kearney State NE        | 17-02.5  | 845  | Marcia Brown    | Sr | Wayland Baptist TX      | NM       |
| 832  | Jean Kolarik     | Jr | Emporia State KS        | 17-02.25 |      |                 |    |                         |          |

Finals Won by \_\_\_\_\_, 2 \_\_\_\_\_, 3 \_\_\_\_\_, 4 \_\_\_\_\_,  
5 \_\_\_\_\_, 6 \_\_\_\_\_, Distance \_\_\_\_\_

**NAIA INDOOR TRACK & FIELD  
OUTSTANDING PERFORMERS**



**ALRICK MUNROE**  
Wayland Baptist TX  
Outstanding Performer  
1987 Men's Division

- 1966 — George Anderson, Texas Southern
- 1967 — Jim Hines, Texas Southern
- 1968 — Van Nelson, St. Cloud State MN
- 1969 — Eric Nesbitt, Eastern Michigan
- 1970 — Al Feuerbach, Emporia State KS
- 1971 — Rex Maddaford, Eastern New Mexico
- 1972 — Rickey Paris, McMurry TX
- 1973 — Mike Boit, Eastern New Mexico
- 1974 — Tommy Fulton, Texas Southern
- 1975 — Mike Boit, Eastern New Mexico
- 1976 — Mike Boit, Eastern New Mexico
- 1977 — Gerald Masterson, Ouachita Baptist AR
- 1978 — Kenneth Brimmer, Jackson State MS (Field)  
John Kebiro, Abilene Christian TX (Track)
- 1979 — Billy Olson, Abilene Christian TX (Field)  
Evans White, Prairie View TX (Track)
- 1980 — Billy Olson, Abilene Christian TX (Field)  
Evans White, Prairie View TX (Track)
- 1981 — (Men) Kevin Jones, Northwood MI  
(Women) Radious Jacobs, Jackson State MS
- 1982 — (Men) Billy Olson, Abilene Christian TX  
(Women) Cathy Schmidt, Saginaw Valley MI
- 1983 — (Men) Joel Ngetich, Wayland Baptist TX  
(Women) Cathy Schmidt, Saginaw Valley MI
- 1984 — (Men) Freddie Johnson, Hampton Institute VA  
(Women) Tori Neubauer, Wisconsin-LaCrosse
- 1985 — (Men) Sammy Epps, Southern Arkansas  
(Women) Carol Williams, Mississippi Valley State
- 1986 — (Men) Devon Morris, Wayland Baptist TX  
(Women) Jane Romig-Brooker, Cedarville OH
- 1987 — (Men) Alrick Munroe, Wayland Baptist TX  
(Women) Cathy Taylor, Prairie View TX



**CATHY TAYLOR**  
Prairie View TX  
Outstanding Performer  
1987 Women's Division



# MEN'S SHOT PUT

Friday, 12:30 p.m.

# EVENT

## 5



Sponsored by  
**GREATER KC SPORTS COMMISSION**

### SHOT PUT RECORDS

**NAIA** — 62-8<sup>3</sup>/<sub>4</sub>, Al Feuerbach, Emporia State KS, 1970  
**AUDITORIUM** — 65-8<sup>3</sup>/<sub>4</sub>, Karl Salb, Kansas, 1970

### Past Champions

1966 Elvin Bethea, North Carolina A&T, 56-7  
1967 Fred Davis, Doane NE, 54-10<sup>1</sup>/<sub>4</sub>  
1968 Fred Davis, Doane NE, 54-6<sup>3</sup>/<sub>4</sub>  
1969 Al Feuerbach, Emporia State KS, 57-5<sup>1</sup>/<sub>2</sub>  
1970 Al Feuerbach, Emporia State KS, 62-8<sup>3</sup>/<sub>4</sub>  
1971 Erich Hardaway, Sul Ross State TX, 57-3  
1972 Dennis Anderson, Fresno Pacific CA, 56-7  
1973 Wally Autem, Pittsburg State KS, 56-7<sup>1</sup>/<sub>2</sub>  
1974 Don Turri, Southern California C, 58-3<sup>1</sup>/<sub>2</sub>  
1975 Don Turri, Southern California C, 59-7  
1976 Frank Gross, Adams State CO, 58-6

1977 Frank Gross, Adams State CO, 61-3<sup>3</sup>/<sub>4</sub>  
1978 Frank Gross, Adams State CO, 60-7  
1979 Paul White, Arkansas Tech, 61-1<sup>1</sup>/<sub>2</sub>  
1980 Harold Ledet, Angelo State TX, 59-8<sup>1</sup>/<sub>2</sub>  
1981 Harold Ledet, Angelo State TX, 60-11<sup>1</sup>/<sub>4</sub>  
1982 Doug Barnett, Azusa Pacific CA, 57-6<sup>3</sup>/<sub>4</sub>  
1983 Mike Manders, Hamline MN, 18.01 (59-1)  
1984 Flip Jones, David Lipscomb TN, 17.81 (58-4<sup>3</sup>/<sub>4</sub>)  
1985 Tom Newberry, Wisconsin-LaCrosse 18.35 (60-2<sup>1</sup>/<sub>2</sub>)  
1986 John Mago, Wisconsin-Eau Claire, 16.20 (53-1<sup>3</sup>/<sub>4</sub>)  
1987 Ade Olukoju, Azusa Pacific CA, 17.55 (57-7)



**AL FEUERBACH**  
Emporia State KS  
NAIA Record Holder

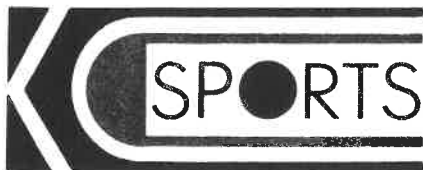
| NO. | NAME            | GR | SCHOOL                | MARK     | NO. | NAME              | GR | SCHOOL                  | MARK     |
|-----|-----------------|----|-----------------------|----------|-----|-------------------|----|-------------------------|----------|
| 598 | Randy Settle    | Jr | Southern Oregon State | 55-11.0  | 547 | Kevin Brown       | Sp | Iowa Wesleyan           | 48-06.5  |
| 303 | Ade Olukoju     | Sp | Azusa Pacific CA      | 54-04.0  | 282 | Jack Lane         | Fr | Bemidji State MN        | 48-00.75 |
| 44  | John Baumann    | Sp | Doane NE              | 53-07.0  | 703 | Bob Drews         | Sp | Nebraska Wesleyan       | 48-00.0  |
| 95  | Todd Adelgren   | Jr | Midland Lutheran NE   | 52-08.75 | 424 | Billy Beard       | Jr | Southwestern KS         | 47-10.0  |
| 665 | Lee Ratliff     | Sr | Hillsdale MI          | 52-07.25 | 323 | Benson Owere      | Jr | Park MO                 | 47-10.0  |
| 493 | Kim Brown       |    | Western Oregon State  | 52-00.5  | 433 | Briant Osborn     | Sp | Southwestern KS         | 47-07.0  |
| 74  | Tim Johnson     | Jr | Findlay OH            | 51-08.0  | 623 | Bill Charette     | Jr | McPherson KS            | 47-04.0  |
| 226 | Rich Merrill    | Sr | Whitworth WA          | 51-03.0  | 238 | Craig Syron       | Fr | Wisconsin-Eau Claire    | 46-09.5  |
| 39  | John Ragland    | Sp | Concordia NE          | 51-01.5  | 24  | Steve Seymour     | Sp | Cedarville OH           | 46-08.0  |
| 532 | Tod Johnson     | Sr | Emporia State KS      | 50-06.5  | 593 | Ben Tolero        | Sr | Tarkio MO               | 46-03.0  |
| 305 | Steve Prokop    | Sr | Azusa Pacific CA      | 50-06.0  | 215 | Rod Rytlewski     | Sp | Saginaw Valley State MI | 46-00.0  |
| 661 | Ed O'Bradovich  | Fr | Hillsdale MI          | 50-02.0  | 236 | Ron McConnell     | Sr | Wisconsin-Eau Claire    | 43-10.0  |
| 394 | Olester Bernard | Jr | Harding AR            | 49-06.5  | 587 | Vincent Leeth     | Fr | Tarkio MO               | 43-00.0  |
| 327 | Kail Bowman     | Fr | Chadron State NE      | 49-02.25 | 512 | Roderick Jones    | Sp | Prairie View A&M TX     | NM       |
| 597 | Dale Osborne    | Fr | Southern Oregon State | 49-02.0  | 388 | Jimmy Poorman     | Fr | Wayland Baptist TX      | NM       |
| 459 | Lonnie Ball     | Jr | Pittsburg State KS    | 49-01.0  | 377 | Sidney Cartwright | Jr | Wayland Baptist TX      | NM       |
| 57  | Carter Bull     | Fr | Doane NE              | 48-07.0  | 334 | Scott Brown       | Fr | Austin College TX       | NM       |

Finals Won by \_\_\_\_\_, 2 \_\_\_\_\_, 3 \_\_\_\_\_, 4 \_\_\_\_\_,  
5 \_\_\_\_\_, 6 \_\_\_\_\_, Distance \_\_\_\_\_

### BEFORE OR AFTER THE GAME



• Cheap Drinks • Great Food  
Just Across the Street  
From Municipal Auditorium South Side  
**213 W. 14th — 421-8484**



The NAIA appreciates the Greater Kansas City Sports Commission for their co-sponsoring the NAIA Track and Field Coaches breakfast and their presentation of the NAIA Men's and Women's Coaches of the Year bowls and the Women's Most Valuable Performer trophy.



## KANSAS CITY'S Premier Steak House

MAIN AT 20TH  
KANSAS CITY, MISSOURI 64108  
(816) 842-1080





# EVENT 6

# MEN'S TRIPLE JUMP Friday, 2:00 p.m.



### Past Champions

1977 Moise Pomaney, Tarleton State TX, 52-3  
 1978 Kenneth Brimmer, Jackson State MS, 52-10¼  
 1979 Bill McClellon, Abilene Christian TX, 51-1¾  
 1980 Larry Perkins, Jackson State MS, 49-7¾  
 1981 Cary Tyler, Biola CA, 52-2¾  
 1982 Britt Courville, Texas Southern, 52-2  
 1983 David McGadgen, Virginia State, 16.39 (53-9)  
 1984 Paul Emordi, Texas Southern, 16.36 (53-9)  
 1985 Paul Emordi, Texas Southern, 16.67 (54-8½)  
 1986 Curt Christiansen, Adams State CO, 15.07 (49-5½)  
 1987 Lennox Adams, Ouachita Baptist AR, 15.21 (49-11)

### TRIPLE JUMP RECORDS

**NAIA — 16.67 (54-8½) Paul Emordi, Texas Southern, 1985**

**AUDITORIUM — 54-9½, Ajai Agbebaku, Maccabi TC, 1982**



**PAUL EMORDI**  
Texas Southern  
NAIA Record Holder

| NO. | NAME               | GR | SCHOOL                  | MARK     | NO. | NAME               | GR | SCHOOL                  | MARK    |
|-----|--------------------|----|-------------------------|----------|-----|--------------------|----|-------------------------|---------|
| 195 | Solomon Okundaye   | Sp | Oklahoma Baptist        | 49-06.0  | 700 | Darin Bentzinger   | Jr | Nebraska Wesleyan       | 45-07.0 |
| 514 | Dennis McWhinney   | Sr | Prairie View A&M TX     | 49-01.0  | 678 | Richard Hoffman    | Fr | Adams State CO          | 45-06.0 |
| 116 | Rodgers Gaines     | Sp | Ouachita Baptist AR     | 48-03.5  | 212 | Chris Ludka        | Jr | Saginaw Valley State MI | 45-03.5 |
| 139 | Myron Jefferson    | Sr | Southern Colorado       | 48-01.25 | 490 | James Tainter      | Sp | Dakota State SD         | 45-00.0 |
| 135 | Kirk Scott         | Sp | Southern New Orleans LA | 48-01.0  | 55  | Shawn Weigel       | Fr | Doane NE                | 45-00.0 |
| 113 | Lennox Adams       | Sp | Ouachita Baptist AR     | 47-11.0  | 110 | Jim Rus            | Sr | Northwestern IA         | 44-06.5 |
| 30  | Christopher Bodley | Fr | Concordia NE            | 47-10.25 | 216 | Scott Schwenter    | Sp | Saginaw Valley State MI | 44-06.0 |
| 89  | Brad Swanson       | Sr | Moorhead State MN       | 47-05.0  | 538 | Mark Vollmer       | Sr | Wayne State NE          | 44-05.0 |
| 86  | Brian Rabenberg    | Fr | Moorhead State MN       | 47-05.0  | 664 | Ryan Pshigoda      | Jr | Hillsdale MI            | 43-02.0 |
| 80  | Randy Dillon       | Fr | Moorhead State MN       | 47-05.0  | 706 | Tim Goldsberry     | Fr | Nebraska Wesleyan       | 43-00.0 |
| 458 | Wesley Augmon      | Sp | Pittsburg State KS      | 46-07.0  | 18  | Stan Charlton      | Sp | Cedarville OH           | 41-00.0 |
| 129 | Mike McCarther     | Jr | Ouachita Baptist AR     | 46-02.0  | 478 | Stephen Richardson | Sp | Central State OK        | 40-03.0 |
| 601 | Rick Hanson        | SR | MidAmerica Nazarene KS  | 45-09.0  | 367 | Delroy Thomas      | FR | Wayland Baptist TX      | NM      |
| 255 | Michael Cottrell   | Fr | Hastings NE             | 45-07.75 | 266 | Danny Fleming      | Fr | Kearney State NE        | NM      |
| 442 | Ricky Tellis       | Sr | Southwestern KS         | 45-07.25 | 14  | Robert Banks       | Jr | Ouachita Baptist AR     | NM      |

Finals Won by \_\_\_\_\_, 2 \_\_\_\_\_, 3 \_\_\_\_\_, 4 \_\_\_\_\_,  
 5 \_\_\_\_\_, 6 \_\_\_\_\_, Distance \_\_\_\_\_



# EVENT 7

# WOMEN'S TRIPLE JUMP Friday, 5:00 p.m.



**DENISE WILLIAMS**  
Wayland Baptist TX  
NAIA Record Holder

### TRIPLE JUMP RECORDS

**NAIA — 12.21 (40-0¾), Denise Williams, Prairie View TX, 1986**

### Past Champions

1986 Denise Williams, Wayland Baptist TX, 12.21 (40-0¾)  
 1987 Denise Williams, Wayland Baptist TX, 12.09 (39-8)

| NO. | NAME             | GR | SCHOOL                  | MARK     | NO.  | NAME              | GR | SCHOOL                  | MARK     |
|-----|------------------|----|-------------------------|----------|------|-------------------|----|-------------------------|----------|
| 859 | Denise Williams  | Sr | Wayland Baptist TX      | 38-05.25 | 1075 | Gwen Beauford     | Fr | Oklahoma Christian      | 35-07.5  |
| 878 | Kimolyn Vanzant  | Sr | Prairie View A&M TX     | 38-01.25 | 1021 | Janeen Connett    | Sp | Midland Lutheran NE     | 34-10.75 |
| 879 | Chandra Williams | Fr | Prairie View A&M TX     | 37-03.25 | 920  | Lisa Ladd         | Fr | Hillsdale MI            | 34-01.0  |
| 861 | Raquel Andrews   | Sp | Prairie View A&M TX     | 37-03.25 | 919  | Michelle Kowalski | Sr | Hillsdale MI            | 34-00.0  |
| 868 | Patti Harris     | 1  | Prairie View A&M TX     | 36-11.0  | 787  | Shonga Cambric    | Sp | Baker KS                | 33-11.5  |
| 967 | Laura Evans      | Jr | Missouri Baptist        | 36-04.0  | 757  | Melanie Byrne     | Fr | Southern Oregon State   | 33-11.0  |
| 911 | Mary Pawling     | Jr | Hastings NE             | 36-02.75 | 769  | Stephany Tiner    | Sp | Oklahoma Baptist        | 33-07.0  |
| 953 | Barb Bishop      | Sr | Saginaw Valley State MI | 36-02.25 | 798  | Sue Anderson      | Sr | Nebraska Wesleyan       | 32-09.0  |
| 978 | Dana Williams    | Fr | Missouri Baptist        | 36-01.0  | 774  | Sherese Hall      | Sp | Missouri Valley         | 32-08.0  |
| 975 | Sandra Stepney   | Fr | Missouri Baptist        | 36-01.0  | 988  | Laura Whaley      | Jr | Cedarville OH           | 32-05.0  |
| 946 | Sue Mathiowetz   | Jr | Moorhead State MN       | 35-11.0  | 1040 | Tracy Karshna     | Fr | Wisconsin-Parkside      | 31-11.0  |
| 842 | Billie Jo Urban  | Jr | Pittsburg State KS      | 35-09.0  | 963  | Verlynda Wilson   | Sp | Saginaw Valley State MI | 31-00.0  |
| 872 | Tephanie Mack    | Fr | Prairie View A&M TX     | 35-08.0  | 846  | Wendi Burns       | Fr | Wayland Baptist TX      | NM       |

Finals Won by \_\_\_\_\_, 2 \_\_\_\_\_, 3 \_\_\_\_\_, 4 \_\_\_\_\_,  
 5 \_\_\_\_\_, 6 \_\_\_\_\_, Distance \_\_\_\_\_



# WOMEN'S 60-YARD HURDLES

## EVENT

### Friday, 6:40 p.m.

## 8



**LINDA WEEKLY**  
Texas Southern  
NAIA Record Holder

### 60-YARD HURDLES RECORDS

**NAIA** — 7.79, Linda Weekly, Texas Southern, 1981

**AUDITORIUM** — 7.79, Linda Weekly, Texas Southern, 1981

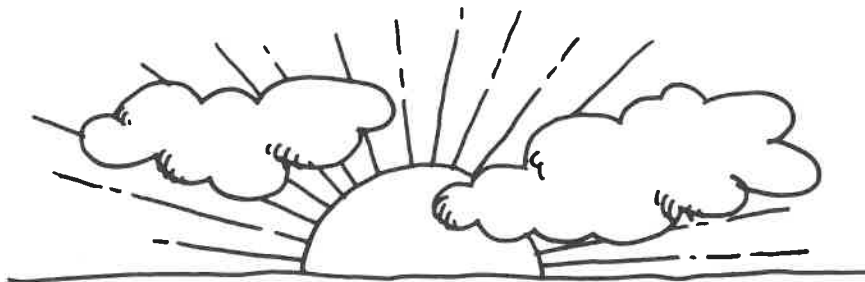
### Past Champions

- 1981 Linda Weekly, Texas Southern, 7.79
- 1982 Linda Weekly, Texas Southern, 7.96
- 1983 Arnita Epps, Texas Southern, 8.06
- 1984 Thomasina Bush, Hampton Institute VA, 7.81
- 1985 Maria Usifo, Texas Southern, 7.82
- 1986 Brenda Jarvis, Adams State CO, 8.00
- 1987 Melody Robinson, Midland Lutheran NE, 7.98

| NO.  | NAME             | GR | SCHOOL              | MARK | NO.  | NAME              | GR | SCHOOL             | MARK |
|------|------------------|----|---------------------|------|------|-------------------|----|--------------------|------|
| 976  | Dorothy Young    | Jr | Missouri Baptist    | 8.14 | 922  | Marie Mitchell    | Sr | Hillsdale MI       | 8.64 |
| 1032 | Teri Van Wechel  | Jr | Northwestern IA     | 8.26 | 1001 | Heidi Fishler     | Fr | Doane NE           | 8.73 |
| 878  | Kimolyn Vanzant  | Sr | Prairie View A&M TX | 8.30 | 808  | Lynn Bishop       | Sp | Western State CO   | 8.74 |
| 854  | Barbara Moore    | Fr | Wayland Baptist TX  | 8.40 | 803  | Lisa Riecken      | Jr | Nebraska Wesleyan  | 8.81 |
| 859  | Denise Williams  | Sr | Wayland Baptist TX  | 8.40 | 773  | Angela Franklin   | Sp | Missouri Valley    | 8.93 |
| 942  | Brenda Braun     | Sp | Moorhead State MN   | 8.44 | 785  | Kari Jacobson     | Sr | Whitworth WA       | 8.94 |
| 915  | Jennifer Farough | Sp | Hillsdale MI        | 8.47 | 842  | Billie Jo Urban   | Jr | Pittsburg State KS | 8.94 |
| 839  | Tracy Ivy        | Jr | Pittsburg State KS  | 8.54 | 846  | Wendi Burns       | Fr | Wayland Baptist TX | 9.04 |
| 943  | Wendy Granum     | Jr | Moorhead State MN   | 8.54 | 985  | Cindy Collier     | Sr | Cedarville OH      | 9.22 |
| 969  | Georgia Gibson   | Jr | Missouri Baptist    | 8.56 | 735  | Tonya Wesselowski | Sp | Bethany KS         | 9.24 |
| 975  | Sandra Stepney   | Fr | Missouri Baptist    | 8.58 | 769  | Stephany Tiner    | Sp | Oklahoma Baptist   | 9.34 |
| 936  | Barb Miller      | Sp | Kearney State NE    | 8.61 | 1009 | Karen Borgstedt   | Sp | Fort Hays State KS | 9.44 |
| 777  | Jenifer Proud    | Jr | Chadron State NE    | 8.63 | 1017 | Kari Williams     | Sp | Fort Hays State KS | 9.54 |
| 916  | Martha Fridge    | Sp | Hillsdale MI        | 8.63 | 753  | Amy Dixon         | Sp | Rio Grande OH      | 9.74 |

Finals Won by \_\_\_\_\_, 2 \_\_\_\_\_, 3 \_\_\_\_\_, 4 \_\_\_\_\_,  
5 \_\_\_\_\_, 6 \_\_\_\_\_, Time \_\_\_\_\_

# Wake up to Shoney's Breakfast Bar



What could possibly be better than Shoney's All-you-care-to-eat Breakfast Bar? How about more items than ever before at a great low price. Wake up to breakfast at Shoney's.

**SHONEY'S**  
America's  
Dinner Table™





**EVENT**  
**9**

**MEN'S 60-YARD HIGH HURDLES**

**Friday, 6:50 p.m.**



**Past Champions**

1966 Willie Davenport, Southern LA, 7.1  
 1967 Willie Davenport, Southern LA, 7.0  
 1968 Roy Hicks, Texas Southern, 7.3  
 1969 William Tipton, Eastern Michigan, 7.4  
 1970 Rodney Milburn, Southern LA, 7.1  
 1971 Fuller Cherry, Arkansas AM&N, 7.4  
 1972 Rodney Milburn, Southern LA, 7.0  
 1973 Rodney Milburn, Southern LA, 7.0  
 1974 Charles Foster, North Carolina Central, 7.3  
 1975 Charles Foster, North Carolina Central, 6.9  
 1976 Ricky Davenport, Southern LA, 7.34

1977 Ricky Davenport, Southern LA, 7.33  
 1978 Ricky Davenport, Southern LA, 7.26  
 1979 Edgar Fordham, Southern LA, 7.38  
 1980 Steve Parker, Abilene Christian TX, 7.2  
 1981 Dwayne Allen, Harding AR, 7.46  
 1982 Steve Parker, Abilene Christian TX, 7.19  
 1983 Robert Johnson, Wayland Baptist TX, 7.33  
 1984 Robert Johnson, Wayland Baptist TX, 7.28  
 1985 Dennis Brantley, Texas Southern, 7.36  
 1986 Scott Etherton, Nebraska Wesleyan, 7.35  
 1987 Kevin McKinley, Prairie View TX, 7.33

Sponsored by  
**ETONIC**

**60-YARD HIGH HURDLES RECORDS**

**NAIA — 6.9 (HT), Charles Foster, North Carolina Central, 1975; Rod Milburn, Southern LA, 1972**  
**AUDITORIUM — 6.9, Rodney Milburn, Southern LA, 1972**

| NO. | NAME             | GR | SCHOOL                  | MARK |
|-----|------------------|----|-------------------------|------|
| 502 | Otto Baker       | Sp | Prairie View A&M TX     | 7.39 |
| 702 | Dave Detlefsen   | Sr | Nebraska Wesleyan       | 7.44 |
| 300 | Ike Mbadugha     | Jr | Azusa Pacific CA        | 7.49 |
| 64  | Jon Haseihort    | Sp | Fort Hays State KS      | 7.50 |
| 592 | Carl Smith       | Jr | Tarkio MO               | 7.50 |
| 515 | Felton Nails     | Sp | Prairie View A&M TX     | 7.51 |
| 144 | Sid Lewis        | Fr | Walsh OH                | 7.52 |
| 130 | Arthur Brye      | Fr | Southern New Orleans LA | 7.56 |
| 354 | Darnell Turner   | Fr | Missouri Valley         | 7.59 |
| 648 | LeAnthony Vaughn | Jr | Southern Arkansas       | 7.59 |
| 291 | Herbie Akpom     | Jr | Azusa Pacific CA        | 7.61 |
| 168 | Eric West        | Sr | Missouri Baptist        | 7.63 |
| 81  | Craig Krupke     | Sr | Moorhead State MN       | 7.64 |
| 93  | Morris Rau       | Sr | Moorhead State MN       | 7.64 |
| 195 | Solomon Okundaye | Sp | Oklahoma Baptist        | 7.64 |
| 292 | Brian Arnold     | Sr | Azusa Pacific CA        | 7.64 |
| 298 | Anthony House    | Jr | Azusa Pacific CA        | 7.64 |
| 519 | Charles Sadberry | Fr | Prairie View A&M TX     | 7.64 |
| 520 | Samuel Sampson   | Fr | Prairie View A&M TX     | 7.64 |
| 687 | Paul Sims        | 1  | Adams State CO          | 7.64 |
| 721 | Craig Moore      | Fr | Western State CO        | 7.64 |
| 43  | Mike Auman       | Sr | Doane NE                | 7.66 |
| 473 | Rodney Glenn     | Sp | Central State OK        | 7.74 |

| NO. | NAME              | GR | SCHOOL                  | MARK |
|-----|-------------------|----|-------------------------|------|
| 331 | Danny Moore       | Jr | Chadron State NE        | 7.75 |
| 232 | Jeff Kaufman      | Sr | Wisconsin-Eau Claire    | 7.77 |
| 109 | Kent Pfeil        | Sp | Northwestern IA         | 7.82 |
| 434 | Gregory Peoples   | Fr | Southwestern KS         | 7.84 |
| 630 | William Harris    | Fr | McPherson KS            | 7.84 |
| 482 | Bert Stephens     | Jr | Central State OK        | 7.89 |
| 680 | John McHenry      | Fr | Adams State CO          | 7.90 |
| 273 | Loren Schriener   | Jr | Kearney State NE        | 7.94 |
| 276 | Darren Stohlman   | Fr | Kearney State NE        | 7.94 |
| 170 | Derrick Wilson    | Fr | Missouri Baptist        | 7.97 |
| 580 | Cedric Carrington | Fr | Tarkio MO               | 7.97 |
| 217 | Pete Shira        | Sp | Saginaw Valley State MI | 8.01 |
| 200 | Jeff Winkler      | Sr | Oklahoma Baptist        | 8.04 |
| 422 | Oscar Woodberry   | Sr | Oklahoma Christian      | 8.04 |
| 157 | Paul Dotsun       | Sp | Missouri Baptist        | 8.08 |
| 13  | Lynn Morris       | Fr | Central Arkansas        | 8.54 |
| 542 | Steve Quackenbush | Sp | Tri-State IN            | 8.24 |
| 543 | Steve Schneider   | Jr | Tri-State IN            | 8.24 |
| 25  | Tim Walters       | Sr | Cedarville OH           | 8.34 |
| 15  | Troy Brown        | Fr | Central Arkansas        | 8.54 |
| 369 | Dion White        | Fr | Wayland Baptist TX      | NM   |
| 370 | Vincent Williams  | Fr | Wayland Baptist TX      | NM   |
| 374 | Rick Breeden      | Sp | Wayland Baptist TX      | NM   |
| 377 | Sidney Cartwright | Jr | Wayland Baptist TX      | NM   |



**ROD MILBURN**  
Southern LA  
Co-NAIA Record Holder



**CHARLES FOSTER**  
North Carolina Central  
Co-NAIA Record Holder

Finals Won by \_\_\_\_\_, 2 \_\_\_\_\_, 3 \_\_\_\_\_, 4 \_\_\_\_\_,  
 5 \_\_\_\_\_, 6 \_\_\_\_\_, Time \_\_\_\_\_

# Etonic®

You'll never run across  
anyone more dedicated  
to performance than  
Etonic.



# WOMEN'S 60-YARD DASH

Friday, 7:00 p.m.

EVENT  
10



Sponsored by  
**EMBASSY ON THE PARK**

**60-YARD DASH RECORDS**

**NAIA — 6.79, Kathrene Wallace, Texas Southern, 1984**  
**AUDITORIUM — 6.7, Marjorie Turner, Toronto CAN, 1967;**  
**Dorothy Myles, Texas Southern, 1968**

**Past Champions**

1981 Esther Hope, Jackson State MS, 6.99  
1982 Kathrene Wallace, Texas Southern, 6.87  
1983 Kathrene Wallace, Texas Southern, 6.91  
1984 Kathrene Wallace, Texas Southern, 6.79  
1985 Kathrene Wallace, Texas Southern, 6.88  
1986 Nzael Kyomo, Wayland Baptist TX, 6.96  
1987 Marcia Brown, Wayland Baptist TX, 6.98

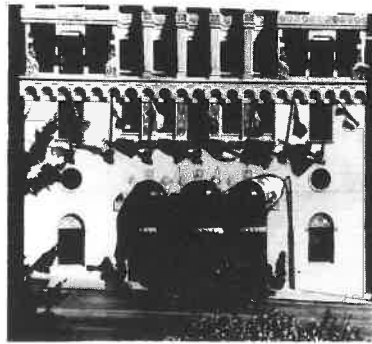


**KATHRENE WALLACE**  
Texas Southern  
NAIA Record Holder

| NO.  | NAME              | GR   | SCHOOL                  | MARK |
|------|-------------------|------|-------------------------|------|
| 844  | Vickie Aoko       | Jr   | Wayland Baptist TX      | 7.09 |
| 845  | Marcia Brown      | Sr   | Wayland Baptist TX      | 7.09 |
| 868  | Patti Harris      | 1    | Prairie View TX         | 7.10 |
| 992  | Carol Bailey      | Sp   | Concordia NE            | 7.10 |
| 794  | Clara Nosegbe     | Fr   | Southern New Orleans LA | 7.11 |
| 850  | Comfort Igeh      | Sr   | Wayland Baptist TX      | 7.12 |
| 951  | Sabrina Arnold    | Sr   | Saginaw Valley State MI | 7.13 |
| 782  | Carmella Cooper   | Fr   | Park MO                 | 7.14 |
| 934  | Carrie Hoehner    | FR   | Kearney State NE        | 7.15 |
| 777  | Jenifer Proud     | Jr   | Chadron State NE        | 7.16 |
| 1031 | Paula Truesdell   | Sp   | Northwestern IA         | 7.20 |
| 945  | Ann Kiecker       | Jr   | Moorhead State MN       | 7.24 |
| 976  | Dorothy Young     | Jr   | Missouri Baptist        | 7.24 |
| 879  | Chandra Williams  | Fr   | Prairie View TX         | 7.29 |
| 867  | Shana Ford        | Ford | Prairie View A&M TX     | 7.36 |
| 957  | Jeanette Elwell   | Sp   | Saginaw Valley State MI | 7.38 |
| 1036 | Jacqueline Cotton | Sr   | Wisconsin-Parkside      | 7.38 |
| 775  | Phebe Washington  | Sp   | Missouri Valley         | 7.46 |
| 866  | Cynthia Clayton   | Sp   | Prairie View A&M TX     | 7.50 |
| 1047 | Becca Scott       | Jr   | Wisconsin-Parkside      | 7.50 |
| 1020 | Vanessa Brown     | Jr   | Midland Lutheran NE     | 7.52 |
| 1024 | Linda Johnson     | Sp   | Midland Lutheran NE     | 7.52 |
| 733  | Jennifer Hanschu  |      | Bethany KS              | 7.54 |
| 939  | Krisite Walz      | Sr   | Kearney State NE        | 7.54 |
| 1077 | Elaine Estes      | Fr   | Oklahoma Christian      | 7.54 |
| 793  | Cynthia Ball      | Fr   | Southern New Orleans LA | 7.58 |
| 986  | Jody Eckert       | Sr   | Cedarville OH           | 7.83 |
| 735  | Tonya Wesselowski |      | Bethany KS              | 7.84 |
| 736  | Tammi Miller      | Sp   | Wayne State NE          | 7.84 |
| 781  | Rhonda Conner     | Fr   | Park MO                 | 7.84 |
| 841  | Misty Mann        | Sp   | Pittsburg State KS      | 7.84 |
| 749  | Kelly Carlson     | Jr   | Iowa Wesleyan           | 7.74 |
| 760  | Julie Ens         |      | Tabor KS                | 7.74 |
| 980  | LeAnn Collums     | Fr   | Central Arkansas        | 7.84 |
| 751  | Amy Kane          | Fr   | Iowa Wesleyan           | 8.04 |
| 1061 | Litita Beckett    | Fr   | Wisconsin-Milwaukee     | NM   |
| 1067 | Kathy Kemp        | Sp   | Wisconsin-Milwaukee     | NM   |

## Our "Extra Points" Certainly Add Up

- Complimentary full buffet-style breakfast every morning
- Complimentary two-hour cocktail party Monday-Saturday
- Tastefully appointed sleeping rooms (190)
- Professionally equipped meeting rooms (2-200)
- Connected by underground tunnel to Convention Center
- Conveniently located on trolley line connecting Crown Center, Westport, Country Club Plaza and bus line to Sports Complex



Your Kansas City Connection —

*Embassy on the park*

1215 Wyandotte • Kansas City, MO 64105  
(816) 471-1333 • (800) 821-5714

**Finals Won by**

1. \_\_\_\_\_ 4. \_\_\_\_\_  
2. \_\_\_\_\_ 5. \_\_\_\_\_  
3. \_\_\_\_\_ 6. \_\_\_\_\_

Time: \_\_\_\_\_



# EVENT 11

# MEN'S 60-YARD DASH

## Friday, 7:05 p.m.



### Past Champions

1966 George Anderson, Southern LA, 6.0  
 1967 James Hines, Texas Southern, 5.9  
 1968 Clyde Duncan, Texas Southern, 6.1  
 1969 Bobby Brown, Arkansas AM'N, 6.1  
 1970 Jack Phillips, Grambling LA, 6.2  
 1971 Jean Louis Ravelomanantsoa, Westmont CA, 6.0  
 1972 Jean Louis Ravelomanantsoa, Westmont CA, 6.0  
 1973 Willie McGee, Alcorn State MS, 6.0  
 1974 Larry Black, North Carolina Central, 6.1  
 1975 Earl Thomas, Jackson State MS, 6.0  
 1976 Earl Thomas, Jackson State MS, 6.17

1977 Joe Franklin, Southern New Orleans LA, 6.32  
 1978 Nate Johnson, Hillsdale MI, 6.23  
 1979 Isadore Johnson, Jackson State MS, 6.26  
 1980 Alvin Matthias, Adams State CO, 6.1  
 1981 Larry White, Mississippi Valley, 6.22  
 1982 Freddie Johnson, Hampton VA, 6.18  
 1983 Innocent Egbunike, Azusa Pacific CA, 6.20  
 1984 Frederick Johnson, Hampton Institute VA, 6.08  
 1985 Innocent Egbunike, Azusa Pacific CA, 6.19  
 1986 Alrick Munroe, Wayland Baptist TX, 6.23  
 1987 Alrick Munroe, Wayland Baptist TX, 6.32

**NAIA—6.08 Freddie Johnson, Hampton Institute VA, 1984**

**AUDITORIUM—6.08 Freddie Johnson, Hampton Institute VA, 1984**

| NO. | NAME              | GR | SCHOOL                  | MARK | NO. | NAME              | GR | SCHOOL                  | MARK |
|-----|-------------------|----|-------------------------|------|-----|-------------------|----|-------------------------|------|
| 495 | Kurt Hargett      | Jr | Western Oregon State    | 6.08 | 199 | Rick Wheeler      | Sp | Oklahoma Baptist        | 6.54 |
| 614 | Oliver Daniels    | Jr | Biola CA                | 6.08 | 277 | Neil Taylor       | Sr | Kearney State NE        | 6.54 |
| 492 | Tim Blamont       | Sr | Western Oregon State    | 6.11 | 278 | Travis Vallin     | Fr | Kearney State NE        | 6.54 |
| 135 | Kirk Scott        | Sp | Southern New Orleans LA | 6.31 | 332 | Jose Wright       | Fr | Chadron State NE        | 6.54 |
| 513 | Harrison Mayberry | Sp | Prairie View A&M TX     | 6.31 | 362 | Randy Pfeifle     | Fr | Dakota Wesleyan SD      | 6.54 |
| 641 | Jeff Young        | Fr | Edward Waters FL        | 6.31 | 429 | Sterling Hinson   | Sr | Southwestern KS         | 6.54 |
| 230 | Eric Burrell      | Sp | Wisconsin-Eau Claire    | 6.32 | 589 | Joseph Powe       | Sp | Tarkio MO               | 6.55 |
| 376 | Ken Brokenburr    | Fr | Wayland Baptist TX      | 6.32 | 116 | Rodgers Gaines    | Sp | Ouachita Baptist AR     | 6.58 |
| 137 | Kenneth Williams  | Jr | Southern New Orleans LA | 6.33 | 399 | Chris Hill        | Sp | Harding AR              | 6.58 |
| 158 | Mike Hall         | Jr | Missouri Baptist        | 6.33 | 582 | Gary Grayson      | Sr | Tarkio MO               | 6.58 |
| 511 | Karenton Facey    | Sp | Prairie View A&M TX     | 6.33 | 568 | Anthony Alenander | Sr | Henderson State AR      | 6.60 |
| 468 | Monte Weathers    | Sr | Pittsburg State KS      | 6.34 | 131 | Jerry Bundage     | Sp | Southern New Orleans LA | 6.61 |
| 261 | Omar B. Whitfield | Sp | Hastings NE             | 6.34 | 572 | Wade Menzies      | Sp | Henderson State AR      | 6.61 |
| 366 | Craig Taylor      | Sp | Wayland Baptist TX      | 6.34 | 272 | Tony Schirmer     | Sp | Kearney State NE        | 6.64 |
| 635 | Ronald Graham     | Sp | Edward Waters FL        | 6.34 | 318 | Sherman Dudley    | Sr | Park MO                 | 6.64 |
| 162 | Anthony Pierson   | Sp | Missouri Baptist        | 6.35 | 483 | Dallas Tice       | Sr | Central State OK        | 6.64 |
| 141 | Ken Ross          | Sr | Southern Colorado       | 6.36 | 489 | Ira Russey        | Sp | Dakota State SD         | 6.64 |
| 674 | Ronald Breath     | Fr | Adams State CO          | 6.38 | 509 | Chris Countee     | Fr | Prairie View A&M TX     | 6.64 |
| 387 | Alrick Munroe     | Fr | Wayland Baptist TX      | 6.37 | 551 | Robert Day        | Sp | Iowa Wesleyan           | 6.64 |
| 637 | Clayvin Richards  | Fr | Edward Waters FL        | 6.37 | 571 | David Gray        | 1  | Henderson State AR      | 6.64 |
| 363 | Jerry Norton      | Sp | Dakota Wesleyan SD      | 6.38 | 349 | Jeff Smith        | Fr | Tarleton State TX       | 6.65 |
| 38  | David Palmer      | Sr | Concordia NE            | 6.40 | 671 | DeWayne Williams  | Sp | Hillsdale MI            | 6.67 |
| 108 | Richard Miller    | Sr | Northwestern IA         | 6.40 | 5   | Brad Lamb         | Sp | Anderson IN             | 6.68 |
| 171 | Garry Woodson     | Sr | Missouri Baptist        | 6.42 | 114 | Robert Banks      | Jr | Ouachita Baptist AR     | 6.73 |
| 130 | Arthur Brye       | Fr | Southern New Orleans LA | 6.43 | 325 | Johnnie Winston   | Sp | Park MO                 | 6.74 |
| 76  | Del Armstrong     | Fr | Moorhead State MN       | 6.44 | 333 | Don Bebee         | Jr | Chadron State NE        | 6.74 |
| 80  | Randy Dillon      | Fr | Moorhead State MN       | 6.44 | 465 | Jimmy Moulds      | Jr | Pittsburg State KS      | 6.74 |
| 88  | Henry Thomas      | Sr | Moorhead State MN       | 6.44 | 644 | Jerry Chandler    | Jr | Southern Arkansas       | 6.74 |
| 92  | Paul Brandt       | Sp | Moorhead State MN       | 6.44 | 401 | Fernando Kidd     | Jr | Harding AR              | 6.76 |
| 306 | Felix Sandy       | Fr | Azusa Pacific CA        | 6.44 | 359 | Theo Johnson      | Sr | Marion IN               | 6.80 |
| 431 | Weldon Kennedy    | Jr | Southwestern KS         | 6.44 | 397 | Barry Ford        | Sr | Harding AR              | 6.86 |
| 469 | Darryl Wren       | Sp | Pittsburg State KS      | 6.44 | 129 | Mike McCarthy     | Jr | Ouachita Baptist AR     | 7.89 |
| 506 | Corey Choppe      | Fr | Prairie View A&M TX     | 6.44 | 121 | Mark Neese        | Jr | Ouachita Baptist AR     | 6.12 |
| 727 | Joe Wolford       | Sp | Western State CO        | 6.44 | 8   | Corey Williamson  | Fr | Anderson IN             | 6.12 |
| 302 | Patrick Nwankwo   | Sr | Azusa Pacific CA        | 6.44 | 335 | Jeffery Coleman   | Fr | Austin College TX       | 6.12 |
| 398 | Harold Hall       | Sp | Harding AR              | 6.46 | 336 | Wayne Coleman     | Sp | Austin College TX       | 6.12 |
| 680 | John McHenry      | Fr | Adams State CO          | 6.46 | 337 | Donald Dunlap     | Fr | Austin College TX       | 6.12 |
| 668 | Darryl Warner     | Jr | Hillsdale MI            | 6.47 | 342 | Fred Kyles        | Fr | Wisconsin-Milwaukee     | 6.12 |
| 711 | Chuck Olsen       | Sp | Nebraska Wesleyan       | 6.48 | 367 | Dorcy Thomas      | Fr | Wayland Baptist         | 6.12 |
| 52  | Darwin Richie     | Jr | Doane NE                | 6.54 | 368 | Larry Watt        | Fr | Wayland Baptist         | 6.12 |
| 195 | Solomon Okundaye  | Sp | Oklahoma Baptist        | 6.54 | 372 | Dennis Alexander  | Sr | Wayland Baptist         | 6.12 |
| 197 | Maurice Simon     | Sr | Oklahoma Baptist        | 6.54 |     |                   |    |                         |      |



**FREDDIE JOHNSON**  
 Hampton Institute VA  
 NAIA Record Holder

Finals Won by \_\_\_\_\_, 2 \_\_\_\_\_, 3 \_\_\_\_\_, 4 \_\_\_\_\_,  
 5 \_\_\_\_\_, 6 \_\_\_\_\_, Time \_\_\_\_\_



# EVENT 12

# MEN'S HIGH JUMP

## Friday, 7:15 p.m.



### Past Champions

1966 Tom Bateman, Harding AR, 6-7  
 1967 John Hartfield, Texas Southern, 7-1  
 1968 Lloyd Higgins, Pasadena CA, 6-10  
 1969 Phil Kastens, Whitworth WA, 6-6  
 1970 Jackie Causey, SW Louisiana, 6-8  
 1971 Jim Sobieszczyk, Kearney State NE, 6-8  
 1972 Walden Curry, Delta State MS, 7-0  
 1973 Walden Curry, Delta State MS, 6-10  
 1974 David Phillips, Pembroke State NC, 6-11  
 1975 British Tharpe, Dallas Baptist TX, 6-10  
 1976 Clark Godwin, Jackson State MS, 6-10

1977 Dwight Stoppel, Fort Hays KS, 6-9  
 1978 Bob Bayless, Oklahoma Christian, 6-10  
 1979 Vic White, Eastern Washington, 7-1½  
 1980 Vic White, Eastern Washington, 7-2  
 1981 Albert Peacock, Ottawa KS, 7-0  
 1982 Mark Norman, Northwood MI, 7-2¾  
 1983 Orville Peterson, Campbell NC, 2.105 (6-11)  
 1984 James Hawkins, Tarleton State TX, 2.16 (7-1)  
 1985 David Glassburn, Manchester IN, 2.18 (7-2)  
 1986 Steffen Smith, Ottawa KS, 2.13 (7-0)  
 1987 Thomas Badour, Saginaw Valley, MI 2.10 (6-11)

Sponsored by  
**FRIENDS OF THE NAIA**

**HIGH JUMP RECORDS**  
**NAIA — 7-2¾, Mark Norman, Northwood MI, 1982**  
**AUDITORIUM — 7-2¾, Mark Norman, Northwood MI, 1982**

| NO. | NAME              | GR | SCHOOL                  | MARK    | NO. | NAME              | GR | SCHOOL              | MARK   |
|-----|-------------------|----|-------------------------|---------|-----|-------------------|----|---------------------|--------|
| 411 | David Bedford     | Sp | Oklahoma Christian      | 6-10.25 | 166 | Tony Smith        | Sp | Missouri Baptist    | 6-08.0 |
| 725 | Tim Rose          | Jr | Western State CO        | 6-10.0  | 118 | Therman Jackson   | Fr | Ouachita Baptist AR | 6-08.0 |
| 640 | Bobby Wilson      | Sr | Edward Waters FL        | 6-10.0  | 258 | Chad Robertus     | Sp | Hastings NE         | 6-07.0 |
| 471 | Jeff Brown        | Sr | Central State OK        | 6-10.0  | 4   | Mike Kersey       | Sp | Anderson IN         | 6-07.0 |
| 458 | Wesley Augmon     | Sp | Pittsburg State KS      | 6-10.0  | 708 | Lee Jameson       | Sp | Nebraska Wesleyan   | 6-06.0 |
| 400 | James Howard      | Jr | Harding AR              | 6-10.0  | 675 | Kevin Cunningham  | Fr | Adams State CO      | 6-06.0 |
| 393 | William Baker     | Sr | Harding AR              | 6-10.0  | 672 | mark Woodard      | Fr | Hillsdale MI        | 6-06.0 |
| 301 | Jack Nance        | Jr | Azusa Pacific CA        | 6-10.0  | 395 | Walter Denson     | Fr | Harding AR          | 6-06.0 |
| 235 | Rob Lorentzen     | Jr | Wisconsin-Eau Claire    | 6-10.0  | 3   | Rich Fairbanks    | Fr | Anderson IN         | 6-06.0 |
| 86  | Brian Rabenberg   | Fr | Moorhead State MN       | 6-10.0  | 576 | Neil Wright       | Fr | Henderson State AR  | 6-05.0 |
| 60  | Steve Broxterman  | Sr | Fort Hays State KS      | 6-10.0  | 677 | Eugene Haynes     | Fr | Adams State CO      | 6-04.0 |
| 505 | Tyson Bryant      | Sp | Prairie View A&M TX     | 6-09.0  | 556 | Travis Wilhite    | Fr | Iowa Wesleyan       | 6-04.0 |
| 182 | Mark McClure      | Sp | Malone OH               | 6-09.0  | 392 | Stephen Alexander | Sp | Harding AR          | 6-04.0 |
| 203 | Tom Badour        | Sp | Saginaw Valley State MI | 6-08.75 | 65  | Terry Higgins     | Sr | Fort Hays State KS  | 6-04.0 |
| 700 | Darin Bentzinger  | Jr | Nebraska Wesleyan       | 6-08.0  | 256 | Peter Johnson     | Fr | Hastings NE         | 6-03.0 |
| 664 | Ryan Pschigoda    | Jr | Hillsdale MI            | 6-08.0  | 535 | Dave Ryan         | Fr | Emporia State KS    | 6-02.0 |
| 596 | Shaun Granger     | Sp | Southern Oregon State   | 6-08.0  | 590 | Clark Schoening   | Sp | Tarkio MO           | 6-00.0 |
| 591 | Sam Schwerdtfeger | Sp | Tarkio MO               | 6-08.0  | 347 | Mike Hareid       | Sp | Wisconsin-Milwaukee | NM     |
| 524 | Lennie Allen      | Sr | Emporia State KS        | 6-08.0  | 344 | Tom Ullmer        | Sp | Wisconsin-Milwaukee | NM     |
|     |                   |    |                         |         | 291 | Herbie Akpom      | Jr | Azusa Pacific CA    | NM     |



**MARK NORMAN**  
 Northwood MI  
 NAIA Record Holder

Finals Won by \_\_\_\_\_, 2 \_\_\_\_\_, 3 \_\_\_\_\_, 4 \_\_\_\_\_,  
 5 \_\_\_\_\_, 6 \_\_\_\_\_, Height \_\_\_\_\_



# WOMEN'S 2-MILE RELAY

Friday, 8:50 p.m.

EVENT  
13



### Past Champions

1981 Jackson State MS, 9:30.49  
 1982 Texas Southern, 9:19.17  
 1983 Prairie View TX, 9:18.69  
 1984 Saginaw Valley MI, 9:20.50  
 1985 Prairie View TX, 9:15.44  
 1986 Prairie View TX, 9:17.24  
 1987 Wisconsin - Milwaukee 9:25.37

### 2-MILE RELAY RECORDS

**NAIA — 9:15.44, Prairie View TX, 1985**  
**AUDITORIUM — 9:15.44, Prairie View TX, 1985**

| NO.  | NAME                | SCHOOL              | MARK     |
|------|---------------------|---------------------|----------|
| 522  | Prairie View A&M TX | Prairie View A&M TX | 9:25.24  |
| 1052 | Wisconsin-Parkside  | Wisconsin-Parkside  | 9:35.68  |
| 251  | North Florida       | North Florida       | 9:36.24  |
| 537  | Emporia State KS    | Emporia State KS    | 9:38.50  |
| 103  | Midland Lutheran NE | Midland Lutheran NE | 9:45.04  |
| 728  | Western State CO    | Western State CO    | 9:48.24  |
| 112  | Northwestern IA     | Northwestern IA     | 9:52.24  |
| 173  | Missouri Baptist    | Missouri Baptist    | 9:53.24  |
| 715  | Nebraska Wesleyan   | Nebraska Wesleyan   | 10:00.14 |
| 423  | Oklahoma Christian  | Oklahoma Christian  | 10:01.43 |
| 279  | Kearney State NE    | Kearney State NE    | 10:17.24 |
| 73   | Fort Hays State KS  | Fort Hays State KS  | 10:26.04 |
| 410  | Harding AR          | Harding AR          | 10:36.74 |
| 42   | Concordia NE        | Concordia NE        | 10:46.04 |
| 594  | Tarkio MO           | Tarkio MO           | 10:46.14 |
| 348  | Wisconsin-Milwaukee | Wisconsin-Milwaukee | NM       |

Finals Won by \_\_\_\_\_, 2 \_\_\_\_\_, 3 \_\_\_\_\_, 4 \_\_\_\_\_  
 5 \_\_\_\_\_, 6 \_\_\_\_\_, Time \_\_\_\_\_



# MEN'S 2-MILE RELAY

Friday, 9:20 p.m.

EVENT  
14



### Past Champions

1966 Pittsburg State KS, 8:08  
 1967 Eastern Michigan, 7:55  
 1968 Eastern Michigan, 7:56.8  
 1969 Eastern Michigan, 7:49.1  
 1970 Kearney State NE, 7:53.8  
 1971 Eastern Michigan, 7:50.4  
 1972 Nebraska-Omaha, 7:50.0  
 1973 Nebraska-Omaha, 7:50.9  
 1974 Prairie View TX, 7:45.2  
 1975 Jackson State MS, 7:53.7  
 1976 Oklahoma Christian, 7:49.77  
 1977 Jackson State MS, 7:42.39  
 1978 Jackson State MS, 7:44.14  
 1979 Oklahoma Christian, 7:48.11  
 1980 Prairie View TX, 7:42.02  
 1981 Jackson State MS, 8:05.3  
 1982 Doane NE, 7:48.58  
 1983 Prairie View TX, 7:46.74  
 1984 Saginaw Valley MI, 7:49.70  
 1985 Central State OK, 7:44.15  
 1986 Missouri Baptist, 7:46.14  
 1987 Southwestern KS, 7:42.49

### 2-MILE RELAY RECORDS

**NAIA — 7:42.02, Prairie View A&M TX, 1980**  
**AUDITORIUM — 7:42.02, Prairie View A&M TX, 1980**

| NO. | NAME                 | SCHOOL               | MARK    |
|-----|----------------------|----------------------|---------|
| 522 | Prairie View A&M TX  | Prairie View A&M TX  | 7:43.84 |
| 224 | Saginaw Valley MI    | Saginaw Valley MI    | 7:46.90 |
| 201 | Oklahoma Baptist     | Oklahoma Baptist     | 7:48.14 |
| 391 | Wayland Baptist TX   | Wayland Baptist TX   | 7:51.04 |
| 728 | Western State CO     | Western State CO     | 7:51.24 |
| 94  | Moorhead State MN    | Moorhead State MN    | 7:51.94 |
| 173 | Missouri Baptist     | Missouri Baptist     | 7:53.24 |
| 73  | Fort Hays State KS   | Fort Hays State KS   | 7:54.84 |
| 643 | Edward Waters FL     | Edward Waters FL     | 7:58.24 |
| 485 | Central State OK     | Central State OK     | 7:58.38 |
| 423 | Oklahoma Christian   | Oklahoma Christian   | 7:58.93 |
| 457 | Lubbock Christian TX | Lubbock Christian TX | 7:59.45 |
| 537 | Emporia State KS     | Emporia State KS     | 7:59.54 |
| 673 | Hillsdale MI         | Hillsdale MI         | 8:01.20 |
| 185 | Malone OH            | Malone OH            | 8:01.54 |
| 59  | Doane NE             | Doane NE             | 8:01.74 |
| 444 | Southwestern KS      | Southwestern KS      | 8:01.74 |
| 500 | Western Oregon       | Western Oregon State | 8:09.24 |
| 410 | Harding AR           | Harding AR           | 8:09.99 |
| 610 | Rio Grande OH        | Rio Grande OH        | 8:11.84 |
| 42  | Concordia NE         | Concordia NE         | 8:29.34 |
| 290 | Manchester IN        | Manchester IN        | NM      |
| 558 | Iowa Wesleyan        | Iowa Wesleyan        | NM      |
| 621 | Biola CA             | Biola CA             | NM      |



**EVANS WHITE - Anchor**  
 Prairie View, TX  
 NAIA Record Holder

Finals Won by \_\_\_\_\_, 2 \_\_\_\_\_, 3 \_\_\_\_\_, 4 \_\_\_\_\_  
 5 \_\_\_\_\_, 6 \_\_\_\_\_, Time \_\_\_\_\_





# EVENT 15

# WOMEN'S 2-MILE RUN Saturday, 1:40 p.m.



Sponsored by  
**GREATER KANSAS CITY CONVENTION & VISITORS BUREAU**

### Past Champions

1982 Angie Pkschus, School of the Ozarks MO, 10:40.47  
1983 Tori Neubauer, Wisconsin-LaCrosse, 10:22.21  
1984 Tori Neubauer, Wisconsin-LaCrosse, 10:23.02  
1985 Julia Zimmer, Marquette WI, 10:49.46  
1986 Lynn Bouche, Wisconsin-Milwaukee, 10:47.33  
1987 Gina Van Laar, Hillsdale MI, 10:46.81

### 2-MILE RUN RECORDS

**NAIA — 10:22.21** Tori Neubauer, Wisconsin-LaCrosse, 1983  
**AUDITORIUM — 10:22.21** Tori Neubauer, Wisconsin-LaCrosse, 1983

| NO.  | NAME                  | GR | SCHOOL              | MARK     |
|------|-----------------------|----|---------------------|----------|
| 743  | Kim Burke             | Sr | Central Washington  | 10:12.54 |
| 792  | Meg McElroy           | Sr | Manchester IN       | 10:37.46 |
| 1023 | Yvonne Hollman        | Sp | Midland Lutheran NE | 10:45.57 |
| 1044 | Michelle Marter-Rohli | Sr | Wisconsin-Parkside  | 10:50.14 |
| 891  | Julie Campbell        | Jr | North Florida       | 10:50.55 |
| 927  | Gina VanLaar          | Sr | Hillsdale MI        | 10:51.24 |
| 824  | Marquerita Skello     | Sr | Malone OH           | 10:56.07 |
| 827  | Cindy Blakeley        | Sr | Emporia State KS    | 10:58.83 |
| 807  | Shelia Barrett        | Sr | Western State CO    | 11:01.24 |
| 931  | Jenny Wilson          | Sr | Hillsdale MI        | 11:03.54 |
| 926  | Marj VanDyke          | Sr | Hillsdale MI        | 11:04.24 |
| 917  | Erin Gillespie        | Jr | Hillsdale MI        | 11:05.84 |
| 923  | Deb Nichols           | Sp | Hillsdale MI        | 11:06.24 |
| 862  | Pamela Beaty          | Sr | Prairie View A&M TX | 11:12.24 |
| 1034 | Kristin Alioto        | Sp | Wisconsin-Parkside  | 11:17.18 |
| 1048 | Ann Stokman           | Fr | Wisconsin-Parkside  | 11:27.04 |
| 1049 | Paula Stokman         | Fr | Wisconsin-Parkside  | 11:30.04 |
| 1041 | Laura Kauffman        | Jr | Wisconsin-Parkside  | 11:38.61 |
| 834  | Michelle Tyrrell      | Fr | Emporia State KS    | 11:38.84 |

| NO.  | NAME             | GR | SCHOOL             | MARK     |
|------|------------------|----|--------------------|----------|
| 770  | Kathy Boone      | Sr | Southwestern KS    | 11:38.84 |
| 971  | Teresea McCain   | Fr | Missouri Baptist   | 11:43.24 |
| 840  | Tracey Keith     | Sr | Pittsburg State KS | 11:43.64 |
| 880  | Anna Assenmacher | Fr | Tarkio MO          | 11:44.24 |
| 791  | Megan Richesin   | Jr | Baker KS           | 11:47.54 |
| 830  | Mary Griebel     | Sr | Emporia State KS   | 11:47.95 |
| 974  | Miriam Otten     | Jr | Missouri Baptist   | 11:48.24 |
| 1016 | Chrissy Sitts    | Sp | Fort Hays State KS | 11:52.24 |
| 771  | Kelly Broadhurst | Jr | Southwestern KS    | 11:54.04 |
| 1042 | Stacy Kinting    | Sp | Wisconsin-Parkside | 11:56.65 |
| 780  | Dawn Buchite     | Sp | Park MO            | 12:05.77 |
| 1046 | Jackie Melotik   | 10 | Wisconsin-Parkside | 12:10.22 |
| 890  | Sonya Wilkerson  | Fr | Tarkio MO          | 12:36.24 |
| 755  | Mary Dowler      | Jr | Rio Grande OH      | 12:41.84 |
| 889  | Brenda Sutton    | Fr | Tarkio MO          | 12:50.24 |
| 730  | Antoinette Smith | Fr | Aquinas MI         | NM       |
| 849  | Kim Griffin      | Fr | Wayland Baptist TX | NM       |
| 852  | Tammy Menchaca   | Fr | Wayland Baptist TX | NM       |
| 853  | Lupe Mijares     | Fr | Wayland Baptist TX | NM       |



**TORI NEUBAUER**  
Wisconsin-LaCrosse  
NAIA Record Holder

Finals Won by \_\_\_\_\_, 2 \_\_\_\_\_, 3 \_\_\_\_\_, 4 \_\_\_\_\_,  
5 \_\_\_\_\_, 6 \_\_\_\_\_, Time: \_\_\_\_\_



# EVENT 16

# MEN'S 2-MILE RUN Saturday, 1:55 p.m.



### Past Champions

1966 Van Nelson, St. Cloud State MN, 9:06.7  
1967 Van Nelson, St. Cloud State MN, 9:04.0  
1968 Van Nelson, St. Cloud State MN, 8:53.1  
1969 David Ellis, Eastern Michigan, 8:54.9  
1970 David Ellis, Eastern Michigan, 9:00.5  
1971 Rex Maddaford, Eastern New Mexico, 8:47.7  
1972 Rex Maddaford, Eastern New Mexico, 8:49.0  
1973 Jeff Matthews, U.S. International CA, 8:57.6  
1974 Tony Brien, Marymount KS, 8:58.8  
1975 Tony Brien, Marymount KS, 8:55.50  
1976 Desmond O'Connor, Angelo State TX, 9:10.74  
1977 John Kebiro, Eastern New Mexico, 8:51.98  
1978 John Kebiro, Abilene Christian TX, 9:01.49  
1979 Ron Graham, Moorhead State MN, 9:17.13  
1980 Gregg Einspahr, Concordia NE, 9:01.64  
1981 Gregg Einspahr, Concordia NE, 8:50.88  
1982 Pat Porter, Adams State CO, 8:51.13  
1983 Troy Ouellette, Saginaw Valley MI, 9:02.14  
1984 Jeff Wachter, Wisconsin-Stout, 8:54.32  
1985 Willie Walsh, Pittsburg State KS, 9:00.99  
1986 Robert Ferguson, Adams State CO, 9:03.21  
1987 Eduardo Naves, Western State CO, 9:01.16

### 2-MILE RUN RECORDS

**NAIA — 8:47.7 (HT)** Rex Maddaford, Eastern New Mexico, 1977  
**AUDITORIUM — 8:47.7 (HT)** Rex Maddaford, Eastern New Mexico, 1977

| NO. | NAME            | GR | SCHOOL                  | MARK    |
|-----|-----------------|----|-------------------------|---------|
| 676 | Craig Dickson   | Jr | Adams State CO          | 8:52.24 |
| 1   | Jeff Bingham    | Jr | Anderson IN             | 8:55.10 |
| 446 | Peter Biwott    | Jr | Lubbock Christian TX    | 8:56.25 |
| 382 | Leodgard Filta  | Jr | Wayland Baptist TX      | 8:58.49 |
| 688 | Jack Sperber    | Sr | Adams State CO          | 9:00.24 |
| 487 | Mike Pace       | Sr | Central Washington      | 9:00.54 |
| 722 | Eduardo Navas   | Sr | Western State CO        | 9:02.24 |
| 233 | Dan Held        | Sr | Wisconsin-Eau Claire    | 9:03.54 |
| 467 | Alan Peyton     | Fr | Pittsburg State KS      | 9:09.56 |
| 245 | Declan Doyle    | Sr | North Florida           | 9:09.98 |
| 679 | Carl Jaquez     | Sr | Adams State CO          | 9:10.24 |
| 419 | Mark Trimble    | Sr | Oklahoma Christian      | 9:11.58 |
| 228 | Peat Sutherland | Sr | Whitworth WA            | 9:12.13 |
| 179 | John Hlaudy     | Fr | Malone OH               | 9:15.04 |
| 175 | Eric Aston      | Sp | Malone OH               | 9:15.34 |
| 646 | Patrick Priddy  | Fr | Southern Arkansas       | 9:18.24 |
| 142 | Jeff Heiser     | Sp | Walsh OH                | 9:18.25 |
| 6   | Frank Runion    | Sp | Anderson IN             | 9:18.25 |
| 248 | Tony Ryan       | Fr | North Florida           | 9:18.43 |
| 177 | John Fernandez  | Fr | Malone OH               | 9:18.58 |
| 205 | Shaun Butler    | Sr | Saginaw Valley State MI | 9:18.94 |
| 180 | John Hoppole    | Sp | Malone OH               | 9:20.70 |
| 663 | Rich Pewe       | Sr | Hillsdale MI            | 9:21.84 |
| 122 | Pat Ponder      | Sr | Ouachita Baptist AR     | 9:22.24 |
| 20  | Eric Fillingner | Sp | Cedarville OH           | 9:22.76 |
| 416 | Ron Lee         | Sr | Oklahoma Christian      | 9:22.98 |
| 656 | Pat Isom        | Sr | Hillsdale MI            | 9:23.84 |
| 246 | Mike McCusker   | Jr | North Florida           | 9:25.24 |
| 249 | Brian Stern     | Jr | North Florida           | 9:26.09 |
| 250 | Mark VanAlstyne | Jr | North Florida           | 9:28.24 |
| 51  | Stacy Priebe    | Sp | Doane NE                | 9:30.39 |
| 143 | Mike Iacofano   | Sp | Walsh OH                | 9:31.74 |
|     |                 |    |                         | 9:32.32 |

| NO. | NAME           | GR | SCHOOL                  | MARK     |
|-----|----------------|----|-------------------------|----------|
| 443 | Stuart Walling | Sr | Southwestern KS         | 9:32.63  |
| 697 | Rudy Rocha     | Fr | Ozarks, School of MO    | 9:34.24  |
| 432 | Tony Meyers    | Sr | Southwestern KS         | 9:36.15  |
| 146 | John Paul      | Jr | Walsh OH                | 9:36.19  |
| 527 | Wade Caselman  | Fr | Emporia State KS        | 9:36.54  |
| 98  | Leon Jensen    | Sr | Midland Lutheran NE     | 9:37.05  |
| 437 | Elliott Rodda  | Sr | Southwestern KS         | 9:38.04  |
| 405 | Jon Murray     | Sp | Harding AR              | 9:40.34  |
| 357 | John Buchanan  | Jr | Marion IN               | 9:41.34  |
| 552 | Tony Draeger   | Sp | Iowa Wesleyan           | 9:41.84  |
| 188 | Pat Patterson  | SR | Northern State SD       | 9:44.13  |
| 404 | Rich Lockhart  | Jr | Harding AR              | 9:46.44  |
| 709 | Les Leder      | Fr | Nebraska Wesleyan       | 9:46.84  |
| 436 | Hector Rios    | Sr | Southwestern KS         | 9:47.12  |
| 406 | Jon Partlow    | Fr | Harding AR              | 9:47.44  |
| 123 | Robbie Simmons | Sr | Ouachita Baptist AR     | 9:49.94  |
| 71  | Tom Weiker     | Jr | Fort Hays State KS      | 9:50.24  |
| 501 | Wes McKee      | Jr | Spring Arbor MI         | 9:50.24  |
| 585 | Robert Hull    | Jr | Tarkio MO               | 9:50.24  |
| 583 | Brad Grogan    | Fr | Tarkio MO               | 9:52.24  |
| 315 | Gary Keehn     | 1  | Baker KS                | 9:54.04  |
| 586 | David Kelly    | Jr | Tarkio MO               | 9:56.54  |
| 578 | Don Archer     | Sp | Tarkio MO               | 9:59.24  |
| 626 | Jack Patine    | Jr | McPherson KS            | 10:14.24 |
| 151 | Tony Mayfield  | Jr | William Jewell MO       | 10:18.25 |
| 121 | John Oswald    | Sr | Cedarville OH           | NM       |
| 134 | Franklin Scott | Fr | Southern New Orleans LA | NM       |
| 154 | Brian Brasher  | Sp | Missouri Baptist        | NM       |
| 304 | Darren Near    | Sr | Azusa Pacific CA        | NM       |
| 307 | Bob Shisler    | Sr | Azusa Pacific CA        | NM       |
| 361 | Red Woolery    | Sr | Marion IN               | NM       |
| 464 | Garry Mortell  | Fr | Pittsburg State KS      | NM       |
| 521 | Aubrey Taylor  | Sp | Prairie View A&M TX     | NM       |



**REX MADDAFORD**  
Eastern New Mexico  
NAIA Record Holder

Finals Won by \_\_\_\_\_, 2 \_\_\_\_\_, 3 \_\_\_\_\_, 4 \_\_\_\_\_,  
5 \_\_\_\_\_, 6 \_\_\_\_\_, Time: \_\_\_\_\_



# MEN'S POLE VAULT

Saturday, 2:00 p.m.

EVENT  
17



### Past Champions

1966 Joe Neihardt, Central Michigan, 15-2  
 1967 Andy Steben, Occidental CA, 15-6  
 1968 Andy Steben, Occidental CA, 15-6  
 1969 Andy Steben, Occidental CA, 15-6  
 1970 Curt Hisaw, Eastern Washington, 15-6½  
 1971 Rickey Parris, McMurry TX, 15-7  
 1972 Rickey Parris, McMurry TX, 16-8¼  
 1973 Steve Hardison, Fresno Pacific CA, 15-9  
 1974 Steve Hardison, Fresno Pacific CA, 15-4  
 1975 Hubert Butler, Jackson State MS, 15-8½  
 1976 Hubert Butler, Jackson State MS, 16-0

1977 Hubert Butler, Jackson State MS, 17-1  
 1978 Frank Estes, Abilene Christian TX, 16-6  
 Billy Olson, Abilene Christian TX, 16-6  
 1979 Billy Olson, Abilene Christian TX, 17-6½  
 1980 Billy Olson, Abilene Christian TX, 17-6½  
 1981 Brad Pursley, Abilene Christian TX, 17-0½  
 1982 Billy Olson, Abilene Christian TX, 18-10  
 1983 Rory Chilton, Arkansas Tech, 4.95 (16-3)  
 1984 Rory Chilton, Arkansas Tech, 4.8 (16-0)  
 1985 Patrick Gellens, Concordia NE, 5.03 (16-6)  
 1986 Jeff Hanoch, Oklahoma Christian, 4.98 (16-4)  
 1987 David Brooks, Concordia NE, 4.80 (16-0)

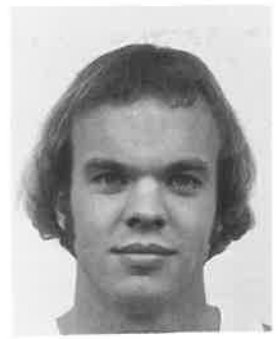
Sponsored by  
**FIBER SPORT**

### POLE VAULT RECORDS

**NAIA — 18-10, Billy Olson, Abilene Christian TX, 1982**  
**AUDITORIUM — 18-10, Billy Olson, Abilene Christian TX, 1982**

| NO. | NAME               | GR | SCHOOL                | MARK     |
|-----|--------------------|----|-----------------------|----------|
| 35  | Don Kitzmann       | Jr | Concordia NE          | 16-01.0  |
| 31  | David Brooks       | Sp | Concordia NE          | 16-01.0  |
| 599 | Kevin Taylor       | Jr | Southern Oregon State | 15-06.0  |
| 574 | Randall Morris     |    | Henderson State AR    | 15-06.0  |
| 530 | Don Funke          | Sr | Emporia State KS      | 15-06.0  |
| 491 | Wade Bakley        | Jr | Western Oregon State  | 15-03.0  |
| 476 | Pete Martinez      | Sp | Central State OK      | 15-01.0  |
| 176 | Mike Daniels       | Fr | Malone OH             | 15-00.0  |
| 523 | David Aleman       | Sr | Emporia State KS      | 15-00.0  |
| 408 | Jimmy Sloan        | Fr | Harding AR            | 15-00.0  |
| 320 | Matt Hart          | Sr | Park MO               | 15-00.0  |
| 84  | Paul Moehring      | Jr | Moorhead State MN     | 15-00.0  |
| 41  | Bradley Stradtmann | Fr | Concordia NE          | 15-00.0  |
| 287 | John Pavy          | Jr | Manchester IN         | 14-07.0  |
| 533 | Ted Methvin        | Sp | Emporia State KS      | 14-06.75 |
| 375 | Rod Britting       | F  | Wayland Baptist TX    | 14-06.75 |
| 664 | Ryan Pschigoda     | Jr | Hillsdale MI          | 14-06.0  |
| 575 | Steve Turner       | Jr | Henderson State AR    | 14-06.0  |
| 569 | Eric Bell          |    | Henderson State AR    | 14-06.0  |
| 540 | Greg Hostetler     | Sp | Tri-State IN          | 14-06.0  |
| 299 | Kevin Kortius      | Sr | Azusa Pacific CA      | 14-06.0  |
| 297 | Mike Duncan        | Jr | Azusa Pacific CA      | 14-06.0  |

| NO. | NAME            | GR | SCHOOL                  | MARK    |
|-----|-----------------|----|-------------------------|---------|
| 219 | Tracey Weber    | Sr | Saginaw Valley State MI | 14-06.0 |
| 184 | Mark Hostetler  | Fr | Malone OH               | 14-06.0 |
| 54  | Matt Utesch     | Sp | Doane NE                | 14-06.0 |
| 712 | Roger Olson     | Sp | Nebraska Wesleyan       | 14-00.0 |
| 670 | Jim Wildenhaus  | Sp | Hillsdale MI            | 14-00.0 |
| 662 | Jim Pechous     | Fr | Hillsdale MI            | 14-00.0 |
| 328 | Jeff Fuss       | Sr | Chadron State NE        | 14-00.0 |
| 218 | David Sturm     | Sp | Saginaw Valley State MI | 14-00.0 |
| 211 | Mike Hankins    | Jr | Saginaw Valley State MI | 14-00.0 |
| 190 | Chad Brooks     | Fr | Oklahoma Baptist        | 14-00.0 |
| 220 | Tim Walli       | Fr | Saginaw Valley State MI | 13-09.0 |
| 704 | Scott Dice      | Fr | Nebraska Wesleyan       | 13-06.0 |
| 329 | Brad Hicks      | Sr | Chadron State NE        | 13-06.0 |
| 263 | David Silingsby | Fr | Hastings NE             | 13-06.0 |
| 66  | Rod Leiker      | Jr | Fort Hays State KS      | 13-06.0 |
| 486 | Tom Dixon       | Sp | Central Washington      | 12-00.0 |
| 379 | Flay Deats      | Jr | Wayland Baptist TX      | NM      |
| 373 | Scott Bickell   | Fr | Wayland Baptist TX      | NM      |
| 301 | Jack Nance      | Jr | Azusa Pacific CA        | NM      |
| 270 | Allen Perry     | Fr | Kearney State NE        | NM      |
| 268 | Ken Larson      | Sp | Kearney State NE        | NM      |
| 267 | Kevin Garrison  | Sp | Kearney State NE        | NM      |
| 127 | Tim Warthan     | Sr | Ouachita Baptist AR     | NM      |



**BILLY OLSON**  
 Abilene Christian TX  
 NAIA Record Holder

Finals Won by \_\_\_\_\_, 2 \_\_\_\_\_, 3 \_\_\_\_\_, 4 \_\_\_\_\_  
 5 \_\_\_\_\_, 6 \_\_\_\_\_, Height \_\_\_\_\_

## The Tradition Continues

Come celebrate with one of the oldest family owned restaurants in K.C., for over 62 years!

Fine Quality  
Italian Food



We've fed your grandparents, parents and now we invite you to be among the thousands of K.C. pasta diners who "lova to mange" at the Italian Gardens.

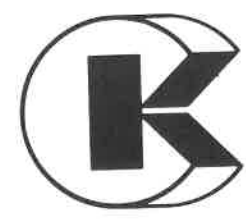
**Italian Gardens**

Free Valet Parking After 5 p.m., 1110 Baltimore • 221-9311

**(816) 966-1792**



6740 East Bannister Rd.  
Kansas City, Missouri 64134 U.S.A.



The NAIA appreciates the Greater Kansas City Convention and Visitors Bureau for their co-sponsoring the NAIA Track and Field coaches breakfast.



# EVENT 18

# MEN'S LONG JUMP Saturday, 2:00 p.m.



Sponsored by  
**MODERN BUSINESS SYSTEMS**

### LONG JUMP RECORDS

**NAIA — 25-7<sup>1</sup>/<sub>2</sub>, Joshua Owusu, Angelo State TX, 1972**  
**AUDITORIUM — 27-1, Bob Beamon, Texas-El Paso, 1968**



**JOSHUA OWUSU**  
Angelo State TX  
NAIA Record Holder

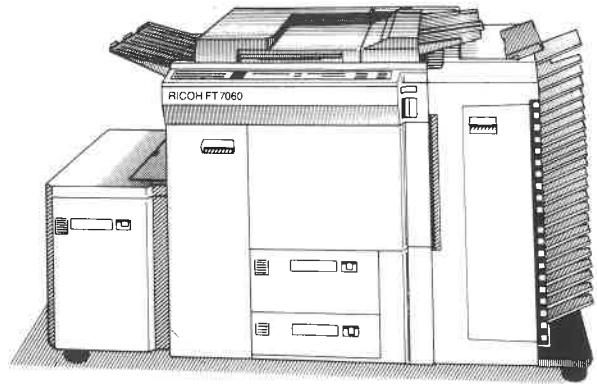
### Past Champions

- 1966 Richard Boeringer, Emporia State KS, 23-2
- 1967 Harvey Nairn, Southern LA, 24-7<sup>3</sup>/<sub>4</sub>
- 1968 Jerry Proctor, Redlands CA, 23-10<sup>3</sup>/<sub>4</sub>
- 1969 David Johnston, Central Arkansas, 23-10<sup>3</sup>/<sub>4</sub>
- 1970 Jerry Proctor, Redlands CA, 25-4<sup>3</sup>/<sub>4</sub>
- 1971 Jerry Proctor, Redlands CA, 25-4<sup>3</sup>/<sub>4</sub>
- 1972 Joshua Owusu, Angelo State TX, 25-7<sup>1</sup>/<sub>2</sub>
- 1973 Joshua Owusu, Angelo State TX, 24-8<sup>1</sup>/<sub>2</sub>
- 1974 J.O. Amoah, Eastern New Mexico, 24-5<sup>3</sup>/<sub>4</sub>
- 1975 Donald Dykes, SE Louisiana, 24-7
- 1976 Mike Brown, NW Louisiana, 24-8<sup>1</sup>/<sub>2</sub>
- 1977 Larry Cooke, Carson-Newman TN, 24-11
- 1978 Dennis Trott, Jackson State MS, 25-1
- 1979 Dennis Trott, Jackson State MS, 24-9-1/42
- 1980 Ricky Smith, Alabama State, 23-11
- 1981 Britt Courville, Texas Southern, 24-4<sup>3</sup>/<sub>4</sub>
- 1982 James Palmer, Texas Southern, 23-11<sup>3</sup>/<sub>4</sub>
- 1983 James Palmer, Texas Southern, 7.47 (24-6<sup>1</sup>/<sub>4</sub>)
- 1984 Paul Emordi, Texas Southern, 7.48 (24-6<sup>1</sup>/<sub>2</sub>)
- 1985 Sammy Epps, Southern Arkansas, 7.54 (24-9)
- 1986 Claude Perkins, Tarkio MO, 7.32 (24-0<sup>1</sup>/<sub>2</sub>)
- 1987 Alrick Munroe, Wayland Baptist TX, 7.64 (25-0<sup>3</sup>/<sub>4</sub>)

| NO. | NAME               | GR | SCHOOL                  | MARK     |
|-----|--------------------|----|-------------------------|----------|
| 387 | Alrick Munroe      | Sr | Wayland Baptist TX      | 24-09.5  |
| 116 | Rodgers Gaines     | Sp | Oauchita Baptist AR     | 24-03.0  |
| 376 | Ken Brokenburr     | Fr | Wayland Baptist TX      | 23-10.75 |
| 514 | Dennis McWhinney   | Sr | Prairie View A&M TX     | 23-10.0  |
| 133 | Ronald Fallen      | Sr | Southern New Orleans LA | 23-10.0  |
| 135 | Kirk Scott         | Sp | Southern New Orleans LA | 23-09.0  |
| 458 | Wesley Augmon      | Sp | Pittsburg State KS      | 23-07.75 |
| 137 | Kenneth Williams   | Jr | Southern New Orleans LA | 23-06.0  |
| 350 | Terry Talton       | Sr | Tarleton State TX       | 23-04.0  |
| 114 | Robert Banks       | Jr | Ouachita Baptist AR     | 23-02.5  |
| 719 | Sean Manning       | Fr | Western State CO        | 23-02.0  |
| 140 | Ernest McDondle    | Sp | Southern Colorado       | 23-01.25 |
| 139 | Myron Jefferson    | Sr | Southern Colorado       | 23-01.25 |
| 89  | Brad Swanson       | Fr | Moorhead State MN       | 23-01.25 |
| 80  | Randy Dillon       | Fr | Moorhead State MN       | 23-01.25 |
| 76  | Del Armstrong      | Fr | Moorhead State MN       | 23-01.25 |
| 678 | Richard Hoffman    | Fr | Adams State CO          | 22-11.0  |
| 568 | Anthony Alexander  | Fr | Henderson State AR      | 22-11.0  |
| 414 | Beaul Haynes       | Jr | Oklahoma Christian      | 22-10.5  |
| 212 | Chris Ludka        | Jr | Saginaw Valley State MI | 22-08.25 |
| 699 | Tim Beebe          | Sr | Nebraska Wesleyan       | 22-08.0  |
| 131 | Jerry Bundage      | Sp | Southern New Orleans LA | 22-08.0  |
| 700 | Darin Bentzinger   | Jr | Nebraska Wesleyan       | 22-07.0  |
| 161 | Glen Norwood       | Fr | Missouri Baptist        | 22-06.0  |
| 533 | Ted Methvin        | Sp | Emporia State KS        | 22-05.0  |
| 110 | Jim Rus            | Sr | Northwestern IA         | 22-05.0  |
| 252 | Grant Anderson     | Sp | Hastings NE             | 22-04.75 |
| 701 | Doug Cowling       | Fr | Nebraska Wesleyan       | 22-04.0  |
| 461 | Jed Ecord          | Sp | Pittsburg State KS      | 22-03.0  |
| 702 | Dave Detlefsen     | Sr | Nebraska Wesleyan       | 22-02.0  |
| 169 | James Williams     | Fr | Missouri Baptist        | 22-02.0  |
| 565 | Chuck Peters       | Sp | Bethany KS              | 22-00.75 |
| 195 | Solomon Okundaye   | Sp | Oklahoma Baptist        | 22-00.0  |
| 442 | Ricky Tellis       | Sr | Southwestern KS         | 21-11.0  |
| 331 | Danny Moore        | Jr | Chadron State NE        | 21-10.5  |
| 203 | Tom Badour         | Sp | Saginaw Valley State MI | 21-10.0  |
| 5   | Brad Lamb          | Sp | Anderson IN             | 21-09.0  |
| 710 | Shane Makovicka    | Fr | Nebraska Wesleyan       | 21-07.0  |
| 440 | Danny Smith        | Fr | Southwestern KS         | 21-04.0  |
| 488 | David Colberg      | Fr | Dakota State SD         | 21-03.0  |
| 664 | Ryan Pschigoda     | Jr | Hillsdale MI            | 21-02.0  |
| 671 | DeWayne Williams   | Sp | Hillsdale MI            | 21-00.0  |
| 495 | Kurt Hargett       | Jr | Western Oregon State    | 21-00.0  |
| 478 | Stephen Richardson | Sp | Central State OK        | 20-11.0  |
| 216 | Scott Schwenter    | Sp | Saginaw Valley State MI | 20-10.0  |
| 18  | Stan Chariton      | Sp | Cedarville OH           | 19-08.0  |
| 389 | Adam Richards      | Sr | Wayland Baptist TX      | NM       |
| 386 | Lorenzo McGill     | Jr | Wayland Baptist TX      | NM       |
| 377 | Sidney Cartwright  | Jr | Wayland Baptist TX      | NM       |
| 367 | Delroy Thomas      | Fr | Wayland Baptist TX      | NM       |
| 336 | Wayne Coleman      | Jr | Austin College TX       | NM       |
| 292 | Brian Arnold       | Sr | Azusa Pacific CA        | NM       |
| 291 | Herbie Akpom       | Jr | Azusa Pacific CA        | NM       |

# RICOH FT7060

The copier for people who want big copy center features, but not the big copy center.



1212 Cambridge Circle  
Kansas City, Kansas 66103  
913-371-8080

*The nation's largest independent distributor of business information systems.*

Finals Won by

- 1. \_\_\_\_\_ 4. \_\_\_\_\_
- 2. \_\_\_\_\_ 5. \_\_\_\_\_
- 3. \_\_\_\_\_ 6. \_\_\_\_\_

Distance: \_\_\_\_\_



# WOMEN'S 440-YARD DASH

Saturday, 2:10 p.m.

# EVENT

19



**CAROL WILLIAMS**  
Mississippi Valley State  
NAIA Record Holder

Finals Won by

1. \_\_\_\_\_
2. \_\_\_\_\_
3. \_\_\_\_\_
4. \_\_\_\_\_
5. \_\_\_\_\_
6. \_\_\_\_\_

Time: \_\_\_\_\_

## Sponsored by SPECIALTY INSTRUMENTS CORPORATION

### 440-YARD DASH RECORDS

**NAIA** — 55.44, Carol Williams, Mississippi Valley State, 1985  
**AUDITORIUM** — 55.44, Carol Williams, Mississippi Valley State, 1985

### Past Champions

1981 Yvonne Joseph, Jackson State MS, 57.96  
1982 Loretta Edwards, Prairie View A&M TX, 57.32  
1983 Joyce Townson, Texas Southern, 56.87  
1984 Lynn Gamble, Prairie View TX, 56.30  
1985 Carol Williams, Mississippi Valley State, 55.44  
1986 Jocelyn Tatum, Prairie View TX, 55.72  
1987 Denise Bullock, Chicago State IL, 55.68

| NO.  | NAME               | GR | SCHOOL                  | MARK    | NO.  | NAME              | GR       | SCHOOL                 | MARK    |
|------|--------------------|----|-------------------------|---------|------|-------------------|----------|------------------------|---------|
| 784  | Airat Bakari       | Jr | Azusa Pacific CA        | 56.01   | 1058 | Margaret Specht   | Sp       | Bemidji State MN       | 1:00.38 |
| 864  | Joanne Caraway     | Sp | Prairie View A&M TX     | 57.35   | 832  | Jean Kolarik      | Jr       | Emporia State KS       | 1:00.74 |
| 844  | Vickie Aoko        | Jr | Wayland Baptist TX      | 57.74   | 1031 | Paula Truesdell   | Sp       | Northwestern IA        | 1:00.74 |
| 873  | Mary Miller        | Jr | Prairie View A&M TX     | 58.05   | 1012 | Marlys Gwaltney   | Fr       | Fort Hays State KS     | 1:01.04 |
| 1033 | Vonda Velgersdyk   | Sr | Northwestern IA         | 58.07   | 929  | Wendy Weber       | Sp       | Hillsdale MI           | 1:01.14 |
| 794  | Clara Nosegbe      | Fr | Southern New Orleans LA | 58.11   | 913  | Donna Sproling    | Jr       | Hastings NE            | 1:01.18 |
| 858  | Althea Thomas      | Sr | Wayland Baptist TX      | 58.26   | 1038 | Yolanda Finley    | Sp       | Wisconsin-Parkside     | 1:01.37 |
| 1032 | Teri Van Wechel    | Jr | Northwestern IA         | 58.47   | 908  | Karlanne Holmes   | Fr       | Hastings NE            | 1:01.84 |
| 865  | Wanda Clay         | Jr | Prairie View A&M TX     | 58.50   | 828  | Gretchen Bohm     | Sp       | Emporia State KS       | 1:02.34 |
| 871  | Rhonda Lampkin     | Sp | Prairie View A&M TX     | 58.52   | 825  | Monica Stevenson  | Fr       | Malone OH              | 1:02.46 |
| 855  | Kenda Reeves       | Fr | Wayland Baptist TX      | 58.72   | 1047 | Becca Scott       | Jr       | Wisconsin-Parkside     | 1:02.86 |
| 933  | Tatia Harris       | Sr | Kearney State NE        | 59.04   | 1036 | Jacqueline Cotton | Sr       | Wisconsin-Parkside     | 1:03.16 |
| 867  | Shana Ford         | Jr | Prairie View A&M TX     | 59.20   | 836  | Kellie Gooch      | Fr       | Pittsburg State KS     | 1:03.34 |
| 992  | Carol Bailey       | Sp | Concorida NE            | 59.35   | 756  | Kim Haller        | Sr       | MidAmerica Nazarene KS | 1:03.74 |
| 795  | Tonya Thompson     | Fr | Southern New Orleans LA | 59.44   | 747  | Brenda Brown      | Sp       | Iowa Wesleyan          | 1:03.94 |
| 1002 | Gina Jochim        | Sr | Doane NE                | 59.81   | 768  | Andrea Pile       | Fr       | Oklahoma Baptist       | 1:03.94 |
| 952  | Jill Bigelow       | Sp | Saginaw Valley State MI | 59.85   | 987  | Shelly Fratus     | Sr       | Cederville OH          | 1:04.00 |
| 957  | Jeanette Elwell    | Sp | Saginaw Valley State MI | 59.86   | 985  | Cindy Collier     | Sr       | Cedarville OH          | 1:04.47 |
| 1056 | Sue Johnson        | Sr | Bemidji State MN        | 1:00.02 | 1035 | Veronica Chamlee  | Sp       | Wisconsin-Parkside     | 1:04.84 |
| 970  | Evelina James      | Sp | Missouri Baptist        | 1:00.04 | 761  | Julie Hiebert     | Tabor KS | 1:05.84                |         |
| 866  | Cynthia Clayton    | Sp | Prairie View A&M TX     | 1:00.10 | 984  | Kari Clark        | Fr       | Cedarville OH          | 1:05.94 |
| 902  | Ann Knetzger       | Jr | Wisconsin-Eau Claire    | 1:00.14 | 752  | Corrie Skiles     | Fr       | Iowa Wesleyan          | NM      |
| 918  | Michelle Jefferson | Fr | Hillsdale MI            | 1:00.14 | 839  | Tracy Ivy         | Jr       | Pittsburg State KS     | NM      |
| 733  | Jennifer Hanschu   | Sr | Bethany KS              | 1:00.24 | 850  | Comfort Igeh      | Sr       | Wayland Baptist TX     | NM      |
| 922  | Marie Mitchell     | Sr | Hillsdale MI            | 1:00.34 | 856  | Wendy Solomon     | Fr       | Wayland Baptist TX     | NM      |



**ACCUTRACK IS USED  
BY EVERY MAJOR  
TRACK MEET IN  
THE U.S.A.**

With Accutrack Model 102A, every race is a photo finish. Because, that's our special feature. The electronic clock in the Accutrack camera is started automatically by a switch tied in with the system at the starter's gun.

As the gun is fired to start the race, an electrical signal is coupled from the gun to activate the clock in the camera position at the finish line. When the lead runner nears the finish line, an infra-red light beam is broken activating the camera filming action.

**OUR PICTURE  
IS WORTH  
1/100th OF A SECOND!**

The winner's photo finish and official electronic time are automatically recorded on Polaroid film. The other runners are also recorded on the same film in a similar way.

After the race, the judges are provided with one photograph showing the runners in finishing order with their respective electronic times accurate to 1/100th of a second displayed right on the film.

Accutrack is currently being used by such athletic associations as NCAA,

NAIA, NJCAA, AIAW, TFA/USA, TAC . . . just to name a few. In fact, Accutrack meets all IAAF automatic equipment requirements for certification of world records.

If you want the best in track timing and photofinishing, get ACCUTRACK.

For more information, contact:



**Specialty Instruments Corp.**

P.O. Box 153447  
Irving, Texas 75015  
(214) 790-1810





**EVENT**  
**20**

**MEN'S 440-YARD DASH**  
**Saturday, 2:15 p.m.**



**Past Champions**

- 1966 Theron Lewis, Southern LA, 48.9
- 1967 Oliver Ford, Southern LA, 49.2
- 1968 Henry Smothers, Arkansas AM&N, 49.3
- 1969 Fred Newhouse, Prairie View TX, 49.5
- 1970 Fred Newhouse, Prairie View TX, 49.7
- 1971 Alvin Dotson, Prairie View TX, 49.7
- 1972 Larry Stinson, SW Oklahoma, 49.7
- 1973 Larry Ellis, Jackson State MS, 50.2
- 1974 Steve Nichols, Adams State CO, 49.5
- 1975 Lawrence Davis, Norfolk State VA, 49.50
- 1976 Jim Bloomingburg, Foid Lipscomb TN, 49.75
- 1977 David Law, Langston OK, 48.94
- 1978 Dennis Duckworth, Jackson State MS, 49.19
- 1979 Theodore Davis, Prairie View TX, 49.5
- 1980 Kenneth Brown, Jackson State MS, 48.79
- 1981 Kevin Jones, Northwood Institute MI, 47.75
- 1982 Kevin Jones, Northwood Institute MI, 48.27
- 1983 Ed Brown, Saginaw Valley MI, 48.27
- 1984 Sammy Epps, Southern Arkansas, 47.64
- 1985 Sammy Epps, Southern Arkansas, 48.47
- 1986 Devon Morris, Wayland Baptist TX, 47.84
- 1987 Devon Morris, Wayland Baptist TX, 48.42

Sponsored by  
**PHILLIPS HOUSE**

**440-YARD DASH RECORDS**

**NAIA — 47.64, Sammy Epps, Southern Arkansas, 1984**  
**AUDITORIUM — 47.64, Sammy Epps, Southern Arkansas, 1984**

| NO. | NAME             | GR | SCHOOL                  | MARK  | NO. | NAME              | GR | SCHOOL                  | MARK  |
|-----|------------------|----|-------------------------|-------|-----|-------------------|----|-------------------------|-------|
| 385 | Lorenzo McGill   | Jr | Wayland Baptist TX      | 47.04 | 237 | Iy Prosa          | Sp | Wisconsin-Eau Claire    | 51.30 |
| 381 | Rodney Eleby     | Jr | Wayland Baptist TX      | 47.23 | 370 | Vincent Williams  | Fr | Wayland Baptist TX      | 51.30 |
| 516 | Eric Pogue       | Sr | Prairie View A&M TX     | 47.69 | 158 | Mike Hall         | Jr | Missouri Baptist        | 51.34 |
| 306 | Felix Sandy      | Fr | Azusa Pacific CA        | 47.84 | 355 | Alvin Walkins     | Sp | Missouri Valley         | 51.34 |
| 480 | Eugen Spears     | Sp | Central State OK        | 48.06 | 698 | Chris Baum        | Sp | Nebraska Wesleyan       | 51.36 |
| 517 | Tyron Hicks      | Fr | Prairie View A&M TX     | 48.10 | 713 | Charles Roberson  | Sp | Nebraska Wesleyan       | 51.37 |
| 515 | Felton Nails     | Sp | Prairie View A&M TX     | 48.12 | 217 | Pete Shira        | Sp | Saginaw Valley State MI | 51.50 |
| 472 | Mark Davis       | Jr | Central State OK        | 48.36 | 711 | Chuck Olsen       | Sp | Saginaw Valley State MI | 51.64 |
| 636 | Willie Larry     | Sr | Edward Waters FL        | 48.61 | 584 | Terrell Harris    | Jr | Tarkio MO               | 51.98 |
| 295 | Paul Dennis      | Jr | Azusa Pacific CA        | 48.65 | 223 | Jesse Brown       | Fr | Saginaw Valley MI       | 52.00 |
| 635 | Ronald Graham    | Sp | Edward Waters FL        | 48.72 | 281 | Todd Burkstrand   | Sp | Bemidji State MN        | 52.04 |
| 376 | Ken Brokenburr   | Fr | Wayland Baptist TX      | 48.73 | 691 | Steve Winston     | Sr | Adams State CO          | 52.04 |
| 511 | Karenton Facey   | Sp | Prairie View A&M TX     | 48.75 | 231 | Andy Eslinger     | Fr | Wisconsin-Eau Claire    | 52.24 |
| 448 | Sherlon Didier   | Jr | Lubbock Christian TX    | 48.85 | 488 | David Colberg     | Fr | Dakota State SD         | 52.24 |
| 481 | Aaron Sprague    | Sp | Central State OK        | 49.07 | 546 | Matt Abbott       | Sp | Iowa Wesleyan           | 52.24 |
| 503 | Charles Broce    | Jr | Prairie View A&M TX     | 49.15 | 682 | Gary Mints        | Fr | Adams State CO          | 52.24 |
| 293 | Carl Arnold      | Jr | Azusa Pacific CA        | 49.25 | 690 | Daniel Wilson     | Sp | Adams State CO          | 52.24 |
| 137 | Kenneth Williams | Jr | Southern New Orleans LA | 49.43 | 426 | Robert Brady      | Fr | Southwestern KS         | 52.34 |
| 727 | Joe Wofford      | Sp | Western State CO        | 49.44 | 647 | Brock Sanders     | Jr | Southern Arkansas       | 52.34 |
| 456 | Zak Tullah       | Jr | Lubbock Christian TX    | 49.51 | 214 | Brad Pullman      | Sp | Saginaw Valley State MI | 52.40 |
| 615 | Mike Gaines      | Sr | Biola CA                | 49.54 | 208 | Craig Furst       | Fr | Saginaw Valley State MI | 52.54 |
| 474 | Mike Hogan       | Jr | Central State OK        | 49.55 | 581 | Mike Gibson       | Sp | Tarkio MO               | 52.54 |
| 104 | Doug Abel        | Jr | Northwestern IA         | 49.55 | 649 | Johnny Watts      | Fr | Southern Arkansas       | 52.54 |
| 666 | Tim Stersic      | Sp | Hillsdale MI            | 49.57 | 260 | David T. Sutter   | Fr | Hastings NE             | 52.84 |
| 449 | Chris Edwards    | Jr | Lubbock Christian TX    | 49.60 | 115 | Kevin Clark       | Jr | Ouachita Baptist AR     | 53.04 |
| 693 | Frankie Atwater  | Fr | Grand View IA           | 49.60 | 572 | Wade Menzies      | Fr | Henderson State AR      | 53.04 |
| 477 | Mitch Nelson     | Sr | Central State OK        | 49.62 | 10  | Kenneth Davis     | Jr | Central Arkansas        | 53.14 |
| 388 | Larry Walt       | Jr | Wayland Baptist TX      | 49.64 | 463 | Greg Harrod       | Sp | Pittsburg State KS      | 53.44 |
| 386 | Craig Taylor     | Sp | Wayland Baptist TX      | 49.65 | 570 | Eian Bryant       | Fr | Henderson State AR      | 53.84 |
| 372 | Dennis Alexander | Sr | Wayland Baptist TX      | 50.14 | 573 | Ward Menzies      | Fr | Henderson State AR      | 53.84 |
| 79  | Mike Dewert      | Sp | Moorhead State MN       | 50.14 | 126 | Tony Stewart      | Fr | Ouachita Baptist AR     | 54.04 |
| 85  | Scott Nitschke   | Jr | Moorhead State MN       | 50.14 | 14  | Patrick Woodson   | Sp | Central Arkansas        | 54.14 |
| 88  | Henry Thomas     | Sr | Moorhead State MN       | 50.14 | 26  | Derek Whalen      | Sp | Cedarville OH           | 54.54 |
| 90  | Steve West       | Jr | Moorhead State MN       | 50.14 | 119 | Breck Wolfe       | Sp | Ouachita Baptist AR     | 54.64 |
| 658 | Darryl Warner    | Jr | Hillsdale MI            | 50.14 | 364 | Pat Covin         | Sp | Tabor KS                | 54.84 |
| 700 | Darin Benzlanger | Jr | Nebraska Wesleyan       | 50.22 | 23  | Paul Reinhart     | Fr | Cedarville OH           | 54.98 |
| 430 | Anthony Jennings | Fr | Southwestern KS         | 50.22 | 22  | Dave Reid         | Sp | Cedarville OH           | 55.14 |
| 52  | Darwin Richie    | Fr | Doane NE                | 50.25 | 136 | Derrick Watkins   | Sp | Southern New Orleans LA | NM    |
| 50  | Shawn Mohrman    | Jr | Doane NE                | 50.38 | 254 | Dan Bianford      | Sr | Hastings NE             | NM    |
| 644 | Jerry Chandler   | Jr | Southern Arkansas       | 50.44 | 259 | Andre Sanders     | Jr | Hastings NE             | NM    |
| 278 | Travis Vallin    | Fr | Kearney State NE        | 50.63 | 294 | David Boyd        | Sr | Azusa Pacific CA        | NM    |
| 160 | Kevin Henrey     | Fr | Missouri Baptist        | 50.66 | 308 | Rich Verbal       | Jr | Azusa Pacific CA        | NM    |
| 629 | Brent Webster    | Sp | McPherson KS            | 50.66 | 340 | Dave Cook         | Fr | Wisconsin-Milwaukee     | NM    |
| 262 | Marvin Williams  | Fr | Hastings NE             | 50.74 | 358 | Maurice Johnson   | Fr | Marion IN               | NM    |
| 409 | Eric VanMatre    | Jr | Harding AR              | 50.74 | 359 | Theo Johnson      | Sr | Marion IN               | NM    |
| 230 | Eric Burrell     | Sp | Wisconsin-Eau Claire    | 50.86 | 377 | Sidney Cartwright | Jr | Wayland Baptist TX      | NM    |
| 106 | Richard Miller   | Sr | Northwestern IA         | 50.96 | 384 | Lugene Jackson    | Jr | Wayland Baptist TX      | NM    |
| 159 | Kevin Haines     | Fr | Missouri Baptist        | 51.04 | 390 | James Rolle       | Sp | Wayland Baptist TX      | NM    |
| 191 | Anthony Carney   | Fr | Oklahoma Baptist        | 51.04 | 469 | Darryl Wren       | Jr | Pittsburg State KS      | NM    |
| 269 | James Parks      | Sp | Kearney State NE        | 51.06 | 542 | D'Arcy Byrd       | Fr | Iowa Wesleyan           | NM    |
| 579 | Marcus Browder   | Sr | Tarkio MO               | 51.14 | 550 | Iron Dancy        | Sp | Iowa Wesleyan           | NM    |
| 277 | Neil Taylor      | Sr | Kearney State NE        | 51.20 | 551 | Robert Day        | Sp | Iowa Wesleyan           | NM    |
| 566 | Brian White      | Jr | Bethany KS              | 51.24 | 624 | Jesse Martin      | Fr | McPherson KS            | NM    |
| 378 | Gilbert Chapel   | Jr | Wayland Baptist TX      | 51.28 | 694 | Tony Lisie        | Fr | Grand View IA           | NM    |



**SAMMY EPPS**  
Southern Arkansas  
NAIA Record Holder

Finals Won by \_\_\_\_\_, 2 \_\_\_\_\_, 3 \_\_\_\_\_, 4 \_\_\_\_\_,  
5 \_\_\_\_\_, 6 \_\_\_\_\_, Time \_\_\_\_\_



PERFECT. And only about half the price  
• 216 elegant suites • Succulent steaks in the Sir Loin Room

**PHILLIPS HOUSE HOTEL**

12th at Baltimore

(816) 221-7000



# WOMEN'S 880-YARD RUN

Saturday, 2:20 p.m.

# EVENT

# 21



Sponsored by  
**FRIENDS OF THE NAIA**



**JULIE JENKINS**  
Adams State CO  
NAIA Record Holder

### 880-YARD RUN RECORDS

**NAIA — 2:10.69, Julie Jenkins, Adams State CO, 1985**  
**AUDITORIUM — 2:10.69, Julie Jenkins, Adams State CO, 1985**

### Past Champions

1981 Donna Bean, Jackson State MS, 2:16.38  
1982 Cathy Schmidt, Saginaw Valley MI, 2:18.95  
1983 Cathy Schmidt, Saginaw Valley MI, 2:15.85  
1984 Colleen Booms, Saginaw Valley MI, 2:16.13  
1985 Julie Jenkins, Adams State CO, 2:10.69  
1986 Cathy Taylor, Prairie View TX, 2:14.96  
1987 Cathy Taylor, Prairie View TX, 2:13.76

| NO.  | NAME                 | GR | SCHOOL                  | MARK    | NO.  | NAME              | GR | SCHOOL              | MARK    |
|------|----------------------|----|-------------------------|---------|------|-------------------|----|---------------------|---------|
| 1066 | Anne Hills           | Sr | Wisconsin-Milwaukee     | 2:14.34 | 1043 | Julie Lazarcik    | Sp | Wisconsin-Parkside  | 2:27.04 |
| 875  | Cellisa Shy          | Sp | Prairie View A&M TX     | 2:16.05 | 828  | Gretchen Bohm     | Sp | Emporia State KS    | 2:27.44 |
| 1006 | Kathy Waggoner       | Jr | Doane NE                | 2:17.24 | 767  | Sara Hoeke        | Fr | Northern State SD   | 2:27.98 |
| 870  | Tonya Jenkins        | Sp | Prairie View A&M TX     | 2:18.20 | 882  | Margot Jobson     | Fr | Tarkio MO           | 2:28.24 |
| 1044 | Michelle Marter-Rohl | Sp | Wisconsin-Parkside      | 2:18.79 | 1050 | Colleen Wismer    | Sr | Wisconsin-Parkside  | 2:28.84 |
| 876  | Joan Simmons         | Sp | Prairie View A&M TX     | 2:19.16 | 910  | Allison Nichols   | Sp | Hastings NE         | 2:29.14 |
| 810  | Lisa Fitzgerald      | Jr | Western State CO        | 2:19.24 | 1039 | Jenny Gross       | Fr | Wisconsin-Parkside  | 2:29.56 |
| 877  | Barbara Smith        | Sp | Prairie View A&M TX     | 2:19.25 | 1041 | Laura Kauffman    | Jr | Wisconsin-Parkside  | 2:29.74 |
| 1045 | Nancy Marter         | Jr | Wisconsin-Parkside      | 2:19.60 | 847  | Melody Das        | Fr | Wayland Baptist TX  | 2:30.50 |
| 832  | Jean Kolarik         | Jr | Emporia State KS        | 2:21.14 | 892  | Chris Florio      | Fr | North Florida       | 2:31.24 |
| 925  | Chrissy Papenhagen   | Jr | Hillsdale OH            | 2:21.74 | 989  | Linda Whaley      | Jr | Cedarville OH       | 2:34.34 |
| 1037 | Lorri DeBlicke       | Fr | Wisconsin-Parkside      | 2:22.73 | 1076 | Monica Clark      | Fr | Oklahoma Christian  | 2:34.54 |
| 779  | Deb Spickelmier      | Jr | Chardon State NE        | 2:23.07 | 1079 | Melinda Martin    | Sp | Oklahoma Christian  | 2:35.54 |
| 962  | Theresa Walgus       | Jr | Saginaw Valley State MI | 2:23.08 | 1078 | Karen Haire       | Sp | Oklahoma Christian  | 2:36.64 |
| 914  | Val Ambrose          | Jr | Hillsdale MI            | 2:23.24 | 988  | Laura Whaley      | Jr | Cedarville OH       | 2:48.24 |
| 972  | Kelly McDevitt       | Sp | Missouri Baptist        | 2:25.14 | 890  | Sonya Wilkerson   | Fr | Tarkio MO           | NM      |
| 738  | Sharon Jenson        | Sr | Western Oregon State    | 2:25.24 | 729  | Merry Coffin      | Fr | Aquinas MI          | NM      |
| 964  | Kathy Burgborf       | Sr | Missouri Baptist        | 2:25.74 | 731  | Milinda Thompson  | Fr | Aquinas MI          | NM      |
| 838  | Tina Hancock         | Jr | Pittsburg State KS      | 2:26.04 | 979  | Laura Abbott      | Sr | Central Arkansas    | NM      |
| 1051 | Julie Wunrow         | Jr | Wisconsin-Parkside      | 2:26.24 | 982  | Donna Finton      | Jr | Central Arkansas    | NM      |
| 740  | Selina Staton        | Fr | Western Oregon State    | 2:26.34 | 1074 | Corrina Zimborski | Jr | Wisconsin-Milwaukee | NM      |

Finals Won by \_\_\_\_\_, 2 \_\_\_\_\_, 3 \_\_\_\_\_, 4 \_\_\_\_\_,  
5 \_\_\_\_\_, 6 \_\_\_\_\_, Time \_\_\_\_\_



# MEN'S 880-YARD RUN

Saturday, 2:30 p.m.

# EVENT

# 22



### 880-YARD RUN RECORDS

**NAIA — 1:51.24, Evans White, Prairie View TX, 1979**  
**AUDITORIUM — 1:51.24, Evans White, Prairie View TX, 1979**

### Past Champions

1966 Jack Harms, Fort Hays State KS, 1:55.9  
1967 Jim Nesbit, Central Michigan, 1:55.4  
1968 Felix Johnson, Prairie View TX, 1:56.8  
1969 Felix Johnson, Prairie View TX, 1:55.1  
1970 Cornelius Shoaf, Grambling LA, 1:56.1  
1971 Thomas Bryan, Loras IA, 1:55.8  
1972 Bruce Vogel, Oregon College, 1:55.4  
1973 Mike Boit, Eastern New Mexico, 1:57.4  
1974 Tommy Fulton, Texas Southern, 1:57.0  
1975 Mike Boit, Eastern New Mexico, 1:55.40  
1976 Gerald Masterson, Ouachita Baptist AR, 1:56.09  
1977 Gerald Masterson, Ouachita Baptist AR, 1:52.22  
1978 Evans White, Prairie View TX, 1:54.16  
1979 Evans White, Prairie View TX, 1:51.69  
1980 Evans White, Prairie View TX, 1:51.34  
1981 Joel Ngetich, Wayland Baptist TX, 1:53.04  
1982 Joel Ngetich, Wayland Baptist TX, 1:52.03  
1983 Joel Ngetich, Wayland Baptist TX, 1:52.60  
1984 Edward Thorton, Texas Southern, 1:54.87  
1985 Ernest Bell, Prairie View A&M TX, 2:15.76  
1986 Maurice Smith, Adams State CO, 1:53.09  
1987 Anthony Christie, Prairie View TX, 1:51.99

| NO. | NAME            | GR | SCHOOL                  | MARK    | NO. | NAME              | GR | SCHOOL              | MARK    |
|-----|-----------------|----|-------------------------|---------|-----|-------------------|----|---------------------|---------|
| 385 | Kisute Kiboko   | Sr | Wayland Baptist TX      | 1:52.74 | 474 | Mike Hogan        | Jr | Central State OK    | 1:58.95 |
| 638 | Donald Sikazwe  | Fr | Edward Waters FL        | 1:53.02 | 409 | Eric VanMatre     | Jr | Harding AR          | 1:59.04 |
| 7   | Brian Williams  | Sr | Anderson IN             | 1:53.20 | 707 | Tim Janssen       | Jr | Nebraska Wesleyan   | 1:59.12 |
| 632 | Dwayne Barton   | Fr | Edward Waters FL        | 1:53.24 | 441 | Doug Stanton      | Sp | Southwestern KS     | 1:59.34 |
| 383 | Michael Gregory | Sp | Wayland Baptist TX      | 1:54.04 | 526 | Shawn Brewer      | Fr | Emporia State KS    | 1:59.44 |
| 507 | Anthony Christe | Sp | Prairie View A&M TX     | 1:54.14 | 477 | Mitch Nelson      | Sr | Central State OK    | 1:59.46 |
| 87  | Jeff Streich    | Sr | Moorhead State MN       | 1:54.71 | 439 | Stuart Schmidt    | Fr | Southwestern KS     | 1:59.64 |
| 505 | Tyson Bryant    | Sp | Prairie View A&M TX     | 1:55.14 | 462 | Calvin Harris     | Fr | Pittsburg State KS  | 1:59.75 |
| 508 | Calvin Cobbins  | Jr | Prairie View A&M TX     | 1:55.44 | 420 | Terry Watkins     | Sr | Oklahoma Christian  | 1:59.84 |
| 77  | Brent Brehmer   | Sr | Moorhead State MN       | 1:55.64 | 695 | Ravn Taylor       | Jr | Grand View IA       | 2:00.04 |
| 82  | John Lavin      | Jr | Moorhead State MN       | 1:55.64 | 186 | John Lutmer       | Sr | Northern State SD   | 2:00.06 |
| 83  | Al Malecha      | Sr | Moorhead State MN       | 1:55.64 | 435 | Mike Pope         | Fr | Southwestern KS     | 2:00.14 |
| 90  | Steve West      | Jr | Moorhead State MN       | 1:55.64 | 438 | Troy Scarlett     | Jr | Southwestern KS     | 2:00.44 |
| 91  | Greg Zahalka    | Fr | Moorhead State MN       | 1:55.64 | 525 | Brian Boeve       | Fr | Emporia State KS    | 2:00.62 |
| 193 | Terry Lawson    | Sp | Oklahoma Baptist        | 1:55.97 | 481 | Aaron Sprague     | Sp | Central State OK    | 2:00.77 |
| 172 | Marvin Wright   | Fr | Missouri Baptist        | 1:56.00 | 425 | Dallas Bergstrom  | Jr | Southwestern KS     | 2:00.84 |
| 204 | Jeff Boks       | Fr | Saginaw Valley State MI | 1:56.19 | 253 | Keith Billingsley | Fr | Hastings NE         | 2:02.24 |
| 685 | Robert Schmidt  | Jr | Adams State CO          | 1:56.24 | 12  | Danny Mann        | Sr | Central Arkansas    | 2:02.94 |
| 371 | Darnell Adams   | Jr | Wayland Baptist TX      | 1:56.31 | 149 | Bill Arbeiter     | Jr | William Jewell MO   | 2:03.35 |
| 62  | Ruben Esparza   | Sr | Fort Hays State KS      | 1:56.94 | 479 | Adrian Sanchez    | Fr | Central State OK    | 2:05.00 |
| 165 | Cecil Shy       | Fr | Missouri Baptist        | 1:56.94 | 117 | Jon Guydton       | Fr | Ouachita Baptist AR | 2:07.24 |
| 132 | Edgar Clark     | Fr | Southern New Orleans LA | 1:57.20 | 484 | Darren Wilson     | Jr | Central State OK    | 2:07.34 |
| 475 | Kenneth Lemons  | Sp | Central State OK        | 1:57.35 | 16  | Chad Simpson      | Sp | Central Arkansas    | NM      |
| 209 | Dean Fuerst     | Sp | Saginaw Valley State MI | 1:57.40 | 288 | Carl Rouch        | Sp | Manchester IN       | NM      |
| 210 | Todd Graham     | Fr | Oklahoma Baptist        | 1:57.74 | 343 | Tim Malloy        | Sp | Wisconsin-Milwaukee | NM      |
| 427 | William Carter  | Fr | Southwestern KS         | 1:58.24 | 550 | Tron Dandy        | Sp | Iowa Wesleyan       | NM      |
| 645 | Tommy Cook      | Fr | Southern Arkansas       | 1:58.24 | 553 | Charles Grim      | Jr | Iowa Wesleyan       | NM      |
| 164 | James Robinson  | Fr | Missouri Baptist        | 1:58.62 | 620 | Chris Myer        | Fr | Biola CA            | NM      |



**EVANS WHITE**  
Prairie View TX  
NAIA Record Holder

Finals Won by \_\_\_\_\_, 2 \_\_\_\_\_, 3 \_\_\_\_\_, 4 \_\_\_\_\_,  
5 \_\_\_\_\_, 6 \_\_\_\_\_, Time \_\_\_\_\_



**EVENT  
23**

**WOMEN'S 3-MILE RUN  
Saturday, 2:40 p.m.**



**NEW EVENT**

| NO.  | NAME           | GR | SCHOOL             | MARK     | NO.  | NAME              | GR | SCHOOL              | MARK     |
|------|----------------|----|--------------------|----------|------|-------------------|----|---------------------|----------|
| 743  | Kim Burke      | Sr | Central Washington | 16:10.87 | 1016 | Chrissy Sitts     | Sp | Fort Hays State KS  | 18:04.91 |
| 927  | Gina VanLaar   | Sr | Hillsdale MI       | 16:36.24 | 770  | Kathy Boone       | Sr | Southwestern KS     | 18:12.50 |
| 792  | Meg McElroy    | Sr | Manchester IN      | 16:48.82 | 824  | Marquerite Skello | Sr | Malone OH           | 18:18.80 |
| 893  | Wendy Hagman   | Sr | North Florida      | 17:22.22 | 788  | Erica Edmonds     | Sp | Baker KS            | 18:30.64 |
| 1049 | Paula Stokman  | Fr | Wisconsin-Parkside | 17:24.55 | 830  | Mary Griebel      | Sr | Emporia State KS    | 18:38.53 |
| 1048 | Ann Stokman    | FR | Wisconsin-Parkside | 17:24.92 | 834  | Michelle Tyrrell  | Fr | Emporia State KS    | 18:39.98 |
| 811  | Sonja Frisby   | Jr | Western State CO   | 17:29.24 | 997  | Joy Malchow       | Sp | Concordia NE        | 19:04.84 |
| 840  | Tracey Keith   | Sr | Pittsburg State KS | 17:32.07 | 993  | Karen Brautcheck  | Fr | Concordia NE        | 20:24.84 |
| 917  | Erin Gillespie | Jr | Hillsdale MI       | 17:35.24 | 730  | Antoinette Smith  | Fr | Aquinas MI          | NM       |
| 926  | Marj VanDyke   | Sr | Hillsdale MI       | 17:37.24 | 971  | Teresea McCain    | Fr | Missouri Baptist    | NM       |
| 766  | Marlene Calmus | Sr | Northern State SD  | 17:39.72 | 974  | Miriam Otten      | Jr | Missouri Baptist    | NM       |
| 923  | Deb Nichols    | Sp | Hillsdale MI       | 17:45.24 | 1064 | Rhonda Grabow     | Sp | Wisconsin-Milwaukee | NM       |
| 924  | Casey O'Neill  | Fr | Hillsdale MI       | 17:50.24 | 1072 | Ann Ward          | Sp | Wisconsin-Milwaukee | NM       |

Finals Won by \_\_\_\_\_, 2 \_\_\_\_\_, 3 \_\_\_\_\_, 4 \_\_\_\_\_,  
5 \_\_\_\_\_, 6 \_\_\_\_\_, Time \_\_\_\_\_



**EVENT  
24**

**MEN'S 3-MILE RUN  
Saturday, 3:00 p.m.**



**Past Champions**

- 1979 Fred Torneden, Fort Hays KS, 14:08.42
- 1980 Tim Terrill, Adams State CO, 14:03.33
- 1981 Joel Marchand, Malone OH, 13:59.88
- 1982 Jerrold Wynia, Dordt IA, 13:57.88
- 1983 Glenn Magrum, Hillsdale MI, 14:09.53
- 1984 Michael Nugent, Hillsdale MI, 14:08.45
- 1985 Michael Nugent, Hillsdale MI, 13:58.81
- 1986 Eduardo Navas, Western State CO, 14:35.48
- 1987 Paul Aufdemberge, Hillsdale MI, 13:46.59

**3-MILE RUN RECORDS**  
**NAIA — 13:46.59, Paul Aufdemberge, Hillsdale MI, 1987**  
**AUDITORIUM — 13:36.58, Jim Stinzi, Athletics West, 1982**



**PAUL AUFDENBERGE**  
Hillsdale, MI  
NAIA Record Holder

| NO. | NAME            | GR | SCHOOL               | MARK     | NO. | NAME             | GR | SCHOOL                  | MARK     |
|-----|-----------------|----|----------------------|----------|-----|------------------|----|-------------------------|----------|
| 233 | Dan Heid        | Sr | Wisconsin-Eau Claire | 14:00.83 | 154 | Brian Brasher    | Sp | Missouri Baptist        | 14:46.24 |
| 684 | Rick Robirds    | Jr | Adams State CO       | 14:02.24 | 250 | Mark VanAlstyne  | Jr | North Florida           | 14:48.22 |
| 683 | Marco Ochoa     | Sr | Adams State CO       | 14:12.24 | 655 | Steve Hubbard    | 1  | Hillsdale MI            | 14:49.24 |
| 156 | Jamie Burnham   | Sr | Missouri Baptist     | 14:14.39 | 75  | Ken Anderson     | Sr | Moorhead State MN       | 14:50.34 |
| 681 | Pat Melgares    | Jr | Adams State CO       | 14:17.24 | 78  | Marv Denzer      | Jr | Moorhead State MN       | 14:50.34 |
| 717 | Juan Diaz       | Jr | Western State CO     | 14:18.24 | 705 | John Early       | Sp | Nebraska Wesleyan       | 14:51.77 |
| 244 | Fionan Cronin   | Sr | North Florida        | 14:18.29 | 501 | Wes McKee        | Jr | Spring Arbor MI         | 15:10.24 |
| 686 | James Seefeldt  | Sr | Adams State CO       | 14:19.24 | 436 | Hector Rios      | Fr | Southwestern KS         | 15:11.15 |
| 716 | Steve Cathcart  | Sr | Western State CO     | 14:22.24 | 213 | Carl Martin      | Fr | Saginaw Valley State MI | 15:17.24 |
| 179 | John Hlaudy     | Fr | Malone OH            | 14:24.16 | 123 | Robbie Simmons   | Sr | Ouachita Baptist AR     | 15:18.51 |
| 175 | Eric Ashton     | Sp | Malone OH            | 14:24.63 | 194 | Pat Neville      | Sp | Oklahoma Baptist        | 15:22.14 |
| 163 | Greg Reecht     | Jr | Missouri Baptist     | 14:25.04 | 552 | Tony Draegert    | Sp | Iowa Wesleyan           | 15:22.96 |
| 177 | John Fernandez  | Fr | Malone OH            | 14:30.23 | 29  | Michael Bessert  | Sp | Concordia NE            | 15:24.34 |
| 382 | Leodgard Filtra | Jr | Wayland Baptist TX   | 14:32.24 | 207 | David Cunningham | Jr | Saginaw Valley State MI | 15:30.20 |
| 180 | John Hople      | Sp | Malone OH            | 14:34.75 | 222 | Alan Banaszak    | Sp | Saginaw Valley State MI | 15:30.24 |
| 155 | Paul Brigman    | Sr | Missouri Baptist     | 14:36.24 | 28  | Matthew Beisel   | Fr | Concordia NE            | 15:40.24 |
| 651 | Bob Abraham     | Jr | Hillsdale MI         | 14:38.24 | 607 | Brian Lugenbeel  | Jr | Rio Grande OH           | 15:40.24 |
| 361 | Rod Whoolery    | Sr | Marion IN            | 14:41.53 | 20  | Eric Fillingner  | Sp | Cedarville OH           | NM       |
| 443 | Stuart Walling  | Sr | Southwestern KS      | 14:43.07 | 464 | Garry Mortell    | Fr | Pittsburg State KS      | NM       |
| 21  | John Oswald     | Sr | Cedarville OH        | 14:43.44 | 467 | Alan Peyton      | Fr | Pittsburg State KS      | NM       |
| 249 | Brian Stern     | Jr | North Florida        | 14:44.88 |     |                  |    |                         |          |

Finals Won by \_\_\_\_\_, 2 \_\_\_\_\_, 3 \_\_\_\_\_, 4 \_\_\_\_\_,  
5 \_\_\_\_\_, 6 \_\_\_\_\_, Time \_\_\_\_\_



# WOMEN'S MILE RUN

Saturday, 3:20 p.m.

# EVENT 25



### Past Champions

1981 Kellie Benzow, Wisconsin-Parkside, 5:11.63  
 1982 Debbie Spino, Wisconsin-Parkside, 5:11.46  
 1983 Leslie Devereaux, Texas Southern, 5:04.49  
 1984 Tori Neubauer, Wisconsin-LaCrosse, 4:59.20  
 1985 Kate Somers, Wisconsin-Eau Claire, 5:00.03  
 1986 Kelly McCammon, Emporia State KS, 5:02.09  
 1987 Donna Spickelmier, Kearney State NE, 4:57.78

### MILE RUN RECORDS

**NAIA — 4:57.78, Donna Spickelmier, Kearney State NE 1987**  
**AUDITORIUM — 4:41.76, Dorthie Rasmussen, Iowa State, 1982**



**DONNA SPICKELMIER**  
 Kearney State NE  
 NAIA Record Holder

| NO.  | NAME                 | GR | SCHOOL                  | MARK    | NO.  | NAME             | GR | SCHOOL               | MARK    |
|------|----------------------|----|-------------------------|---------|------|------------------|----|----------------------|---------|
| 1044 | Michelle Marter-Rohi | Sr | Wisconsin-Parkside      | 4:57.87 | 1043 | Julie Lazarcik   | Sp | Wisconsin-Parkside   | 5:22.64 |
| 895  | Jenny Lamoureux      | Sr | North Florida           | 4:58.65 | 1039 | Jenny Gross      | Fr | Wisconsin-Parkside   | 5:26.04 |
| 894  | Annie Kniedler       | Jr | North Florida           | 5:02.79 | 880  | Anna Assenmacher | Fr | Tarkio MO            | 5:27.34 |
| 903  | Sue Kortenkamp       | Jr | Wisconsin-Eau Claire    | 5:08.21 | 1042 | Stacey Kisting   | Sp | Wisconsin-Parkside   | 5:27.84 |
| 813  | Lorie Moreno         | Sr | Western State CO        | 5:08.24 | 1034 | Kristin Alioto   | Sp | Wisconsin-Parkside   | 5:28.04 |
| 1045 | Nancy Marter         | Jr | Wisconsin-Parkside      | 5:09.14 | 740  | Selina Stanton   | Fr | Western Oregon State | 5:28.44 |
| 931  | Jenny Wilson         | Sr | Hillsdale MI            | 5:09.14 | 830  | Mary Griebel     | Sr | Emporia State KS     | 5:28.44 |
| 901  | Lisa Ingwell         | Fr | Wisconsin-Eau Claire    | 5:09.27 | 797  | Michelle Hadden  | Jr | William Jewell MO    | 5:30.39 |
| 905  | Angie Moerbitz       | Jr | Wisconsin-Eau Claire    | 5:10.33 | 1041 | Laura Kauffman   | Jr | Wisconsin-Parkside   | 5:31.84 |
| 744  | Heather Lucas        | Sp | Central Washington      | 5:12.64 | 1081 | Linda Pryor      | Sr | Wisconsin-Milwaukee  | 5:32.94 |
| 927  | Gina VanLaar         | Sr | Hillsdale MI            | 5:12.74 | 887  | Angie Pappert    | Fr | Tarkio MO            | 5:33.24 |
| 930  | Denise Whelton       | Fr | Hillsdale MI            | 5:13.24 | 1050 | Colleen Wismer   | Sr | Wisconsin-Parkside   | 5:34.24 |
| 923  | Deb Nichols          | Sp | Hillsdale MI            | 5:14.24 | 1080 | Melanie Mills    | Fr | Oklahoma Christian   | 5:41.94 |
| 926  | Marj VanDyke         | Sr | Hillsdale MI            | 5:14.24 | 1089 | Tracy Parks      | Fr | Harding AR           | 5:42.74 |
| 914  | Val Ambrose          | Jr | Hillsdale MI            | 5:15.24 | 1091 | Cheryl Bednosky  | Jr | Harding AR           | 5:42.94 |
| 827  | Cindy Blakely        | Sr | Emporia State KS        | 5:16.34 | 862  | Pamela Beaty     | Sr | Prairie View A&M TX  | 5:48.24 |
| 1049 | Paula Stokman        | Fr | Wisconsin-Parkside      | 5:17.44 | 990  | Laurel Yates     | Sp | Cedarville OH        | 5:54.93 |
| 940  | Paula West           | Jr | Kearney State NE        | 5:18.63 | 730  | Antoinette Smith | Fr | Aquinas MI           | NM      |
| 958  | Ann Griffith         | Sr | Saginaw Valley State MI | 5:19.24 | 849  | Kim Griffin      | Fr | Wayland Baptist TX   | NM      |
| 960  | Carline Mighty       | Fr | Saginaw Valley State MI | 5:19.24 | 852  | Tammy Menchaca   | Fr | Wayland Baptist TX   | NM      |
| 1048 | Ann Stokman          | Fr | Wisconsin-Parkside      | 5:19.24 | 853  | Lupe Mijares     | Fr | Wayland Baptist TX   | NM      |
| 961  | Beth Reynolds        | Jr | Saginaw Valley State MI | 5:20.24 | 1066 | Anne Hills       | Sr | Wisconsin-Milwaukee  | NM      |
| 937  | Becky Muma           | Jr | Kearney State NE        | 5:21.29 |      |                  |    |                      |         |
| 833  | Jennifer Strader     | Jr | Emporia State KS        | 5:21.44 |      |                  |    |                      |         |

Finals Won by \_\_\_\_\_, 2 \_\_\_\_\_, 3 \_\_\_\_\_, 4 \_\_\_\_\_,  
 5 \_\_\_\_\_, 6 \_\_\_\_\_, Time \_\_\_\_\_



# MEN'S MILE RUN

Saturday, 3:30 p.m.

# EVENT 26



### Past Champions

1966 John Mason, Fort Hays KS, 4:20.5  
 1967 John Mason, Fort Hays KS, 4:14.0  
 1968 John Mason, Fort Hays KS, 4:06.0  
 1969 Jim Crawford, Harding AR, 4:10.7  
 1970 Dennis Savage, Westmont CA, 4:11.5  
 1971 Bob Maplestone, Eastern Washington, 4:10.5  
 1972 Bob Maplestone, Eastern Washington, 4:13.9  
 1973 Mike Boit, Eastern New Mexico, 4:12.3  
 1974 Tommy Fulton, Texas Southern, 4:11.3  
 1975 Mike Boit, Eastern New Mexico, 4:16.99  
 1976 Mike Boit, Eastern New Mexico, 4:11.39  
 1977 Jim Hanson, Wisconsin-LaCrosse, 4:12.03  
 1978 John Kebiro, Abilene Christian TX, 4:11.44  
 1979 John Esquibel, Adams State CO, 4:14.46  
 1980 John Esquibel, Adams State CO, 4:11.60  
 1981 John Esquibel, Adams State CO, 4:08.15  
 1982 Gregg Einspahr, Concordia NE, 4:06.34  
 1983 Peter Graham, Adams State CO, 4:08.81  
 1984 Peter Graham, Adams State CO, 4:11.76  
 1985 Mark Steward, Adams State CO, 4:09.79  
 1986 Mark Steward, Adams State CO, 4:08.69  
 1987 Brian Williams, Anderson IN, 4:12.66

### MILE RUN RECORDS

**NAIA — 4:06.34, Gregg Einspahr, Concordia, NE 1982**  
**AUDITORIUM — 3:58.8, Jim Ryun, Kansas, 1967**

| NO. | NAME             | GR | SCHOOL                  | MARK    | NO. | NAME             | GR | SCHOOL                  | MARK    |
|-----|------------------|----|-------------------------|---------|-----|------------------|----|-------------------------|---------|
| 531 | Roger Jennings   | Jr | Emporia State KS        | 4:11.64 | 177 | John Fernandez   | Fr | Malone OH               | 4:22.72 |
| 7   | Brian Williams   | Sr | Anderson IN             | 4:13.64 | 467 | Alan Peyton      | Fr | Pittsburg State KS      | 4:24.14 |
| 723 | Frank Oropeza    | Jr | Western State CO        | 4:14.24 | 602 | Mark Cline       | Fr | Rio Grande OH           | 4:24.24 |
| 304 | Darren Near      | Jr | Azusa Pacific CA        | 4:14.55 | 146 | John Paul        | Jr | Walsh OH                | 4:24.34 |
| 689 | Arthur Vigil     | Sr | Adams State CO          | 4:15.24 | 437 | Elliott Rodda    | Sr | Southwestern KS         | 4:24.34 |
| 380 | Paul Dreesen     | Jr | Wayland Baptist TX      | 4:15.84 | 72  | Larry Wood       | Jr | Fort Hays State KS      | 4:26.24 |
| 77  | Brent Brehmer    | Sr | Moorhead State MN       | 4:15.94 | 432 | Tony Myers       | Sr | Southwestern KS         | 4:26.84 |
| 82  | John Lavin       | Sr | Moorhead State MN       | 4:15.94 | 67  | Ramon Lopez      | Jr | Fort Hays State KS      | 4:27.24 |
| 87  | Jeff Streich     | Sr | Moorhead State MN       | 4:15.94 | 539 | Jim Chvala       | Jr | Wayne State NE          | 4:27.64 |
| 91  | Greg Zahalka     | Fr | Moorhead State MN       | 4:15.94 | 122 | Pat Ponder       | Sr | Ouachita Baptist AR     | 4:29.24 |
| 56  | Shawn Wheelock   | Jr | Doane NE                | 4:16.23 | 222 | Alan Banaszak    | Sp | Saginaw Valley State MI | 4:29.24 |
| 205 | Shaun Butler     | Sr | Saginaw Valley State MI | 4:16.90 | 435 | Mike Pope        | Fr | Southwestern KS         | 4:29.64 |
| 248 | Tony Ryan        | Fr | North Florida           | 4:17.34 | 438 | Troy Scarlett    | Jr | Southwestern KS         | 4:30.54 |
| 147 | Marvin Smith     | Sr | Walsh OH                | 4:17.84 | 27  | Corey Woods      | Fr | Cedarville OH           | 4:31.22 |
| 600 | Kevin Martin     | Jr | Mid America Nazarene KS | 4:19.24 | 588 | Steve McFadden   | Fr | Tarkio MO               | 4:31.24 |
| 198 | Kyle Skartwed    | Fr | Oklahoma Baptist        | 4:19.68 | 425 | Dallas Bergstrom | Jr | Southwestern KS         | 4:31.94 |
| 125 | Gary Wade        | Fr | Ouachita Baptist AR     | 4:19.74 | 696 | Vicent Allen     | Fr | Ozarks, School of MO    | 4:32.24 |
| 646 | Patrick Priddy   | Jr | Southern Arkansas       | 4:20.24 | 19  | John Dawes       | Jr | Cedarville OH           | 4:32.29 |
| 187 | Darren Strickler | Jr | Missouri Baptist        | 4:20.44 | 441 | Doug Stanton     | Sp | Southwestern KS         | 4:32.84 |
| 120 | Barry Maroney    | Fr | Ouachita Baptist AR     | 4:20.74 | 439 | Stuart Schmidt   | Fr | Southwestern KS         | 4:34.24 |
| 187 | Tom Mitzel       | Sp | Northern State SD       | 4:21.11 | 12  | Danny Mann       | Sr | Central Arkansas        | NM      |
| 321 | Steve Hunter     | Jr | Park MO                 | 4:21.24 | 339 | Kevin Bouche     | Sp | Wisconsin-Milwaukee     | NM      |
| 714 | Mark Sundquist   | Sr | Nebraska Wesleyan       | 4:21.44 | 341 | Eric Gietzen     | Jr | Wisconsin-Milwaukee     | NM      |
| 100 | Andy Rinn        | Sp | Midland Lutheran NE     | 4:21.84 | 371 | Darnell Adams    | Jr | Wayland Baptist TX      | NM      |
| 536 | Scott Starks     | Jr | Emporia State KS        | 4:21.84 | 464 | Garry Mortell    | Fr | Pittsburg State KS      | NM      |
| 207 | David Cunningham | Jr | Saginaw Valley State MI | 4:22.00 | 510 | Cedric Dolphus   | Fr | Prairie View A&M TX     | NM      |
| 307 | Bob Shisler      | Sr | Azusa Pacific CA        | 4:22.61 | 627 | Matt Scoggins    | Jr | McPherson KS            | NM      |



**KREGG EINSPAHR**  
 Concordia NE  
 NAIA Record Holder

Finals Won by \_\_\_\_\_, 2 \_\_\_\_\_, 3 \_\_\_\_\_, 4 \_\_\_\_\_,  
 5 \_\_\_\_\_, 6 \_\_\_\_\_, Time \_\_\_\_\_





# EVENT 27

# WOMEN'S 600-YARD RUN Saturday, 3:40 p.m.



### Past Champions

- 1981 Radiums Jacobs, Jackson State MS, 1:27.99
- 1982 Easter Gabriel, Prairie View A&M TX, 1:23.97
- 1983 Easter Gabriel, Prairie View A&M TX, 1:23.76
- 1984 Julie Jenkins, Adams State CO, 1:21.78
- 1985 Lavonda Luckett, Prairie View A&M TX, 1:25.19
- 1986 Lavonda Luckett, Prairie View TX, 1:24.26
- 1987 Lavonda Luckett, Prairie View TX, 1:26.64

Sponsored by  
**CRAMER PRODUCTS**

### 600-YARD RUN RECORDS

**NAIA — 1:21.78, Julie Jenkins, Adams State CO, 1984**  
**AUDITORIUM — 1:21.78, Julie Jenkins, Adams State CO, 1984**



**JULIE JENKINS**  
Adams State CO  
NAIA Record Holder

| NO.  | NAME               | GR | SCHOOL                  | MARK    | NO.  | NAME               | GR | SCHOOL                  | MARK    |
|------|--------------------|----|-------------------------|---------|------|--------------------|----|-------------------------|---------|
| 784  | Airat Bakari       | Jr | Azusa Pacific CA        | 1:24.23 | 952  | Jill Bigelow       | Sp | Saginaw Valley State MI | 1:29.89 |
| 858  | Althea Thomas      | Sr | Wayland Baptist TX      | 1:24.74 | 779  | Deb Spickelmier    | Jr | Chadron State NE        | 1:29.94 |
| 1006 | Kathy Waggoner     | Jr | Doane NE                | 1:25.20 | 922  | Marie Mitchell     | Sr | Hillsdale MI            | 1:30.14 |
| 1058 | Margaret Specht    | Sp | Bemidji State MN        | 1:26.52 | 925  | Chrissy Papenhagen | Jr | Hillsdale MI            | 1:30.14 |
| 949  | Bonnie Steinbach   | Jr | Moorhead State MN       | 1:26.64 | 928  | Kelly Vejar        | Jr | Hillsdale MI            | 1:30.24 |
| 864  | Joanne Caraway     | Sp | Prairie View A&M TX     | 1:27.01 | 912  | Melissa Rauert     | Fr | Hastings NE             | 1:30.54 |
| 968  | Lorna Evans        | Jr | Missouri Baptist        | 1:27.07 | 756  | Kim Haller         | Sr | MidAmerica Nazarene KS  | 1:31.24 |
| 1056 | Sue Johnson        | Sr | Bemidji State MN        | 1:27.17 | 929  | Wendy Weber        | Sp | Hillsdale MI            | 1:31.24 |
| 1033 | Vonda Velgersdyk   | Sr | Northwestern IA         | 1:27.33 | 1004 | Kim Schneider      | Sp | Doane NE                | 1:31.29 |
| 1031 | Paula Truesdell    | Sp | Northwestern IA         | 1:27.83 | 836  | Kellie Gooch       | Fr | Pittsburg State KS      | 1:31.34 |
| 1032 | Teri Van Wechel    | Jr | Northwestern IA         | 1:27.94 | 987  | Shelly Fratus      | Sr | Cedarville OH           | 1:31.40 |
| 870  | Tonya Jenkins      | Sp | Prairie View A&M TX     | 1:28.02 | 819  | Kelly Geiser       | Sp | Malone OH               | 1:32.38 |
| 871  | Rhonda Lampkin     | Sp | Prairie View A&M TX     | 1:28.16 | 768  | Andrea Pile        | Fr | Oklahoma Baptist        | 1:32.54 |
| 904  | Frani Loftness     | Sr | Wisconsin-Eau Claire    | 1:28.24 | 828  | Gretchen Bohm      | Sp | Emporia State KS        | 1:32.64 |
| 873  | Mary Miller        | Jr | Prairie View A&M TX     | 1:28.30 | 938  | Traci Siebels      | Jr | Kearney State NE        | 1:33.64 |
| 855  | Kenda Reeves       | Fr | Wayland Baptist TX      | 1:28.30 | 882  | Margot Jobson      | Fr | Tarkio MO               | 1:34.44 |
| 1028 | Janell Hulstein    | Fr | Northwestern IA         | 1:28.71 | 1087 | Margaret Eoff      | Sp | Harding AR              | 1:35.04 |
| 765  | Kari Jacobson      | Sr | Whitworth WA            | 1:28.80 | 973  | Vivian Moore       | Fr | Missouri Baptist        | 1:35.54 |
| 944  | Carmen Grensberg   | Jr | Moorhead State MN       | 1:28.80 | 1082 | Kerianne Thomas    | Fr | Oklahoma Christian      | 1:36.64 |
| 950  | Cheryl Whitlow     | Jr | Moorhead State MN       | 1:28.91 | 760  | Julie Ens          | Fr | Tabor KS                | 1:38.54 |
| 867  | Shana Ford         | Sr | Prairie View A&M TX     | 1:29.14 | 888  | Tamara Rose        | Fr | Tarkio MO               | 1:48.24 |
| 991  | Angela Aufdemberge | Fr | Concordia NE            | 1:29.19 | 745  | Wendy Hartmen      | Fr | McPherson KS            | NM      |
| 1059 | Erin Skahan        | Fr | Bemidji State MN        | 1:29.21 | 856  | Wendy Solomon      | Fr | Wayland Baptist TX      | NM      |
| 832  | Jean Kolarik       | Jr | Emporia State KS        | 1:29.24 | 1065 | Carrie Haen        | Sp | Wisconsin-Milwaukee     | NM      |
| 962  | Theresa Walgus     | Jr | Saginaw Valley State MI | 1:29.84 |      |                    |    |                         |         |

Finals Won by \_\_\_\_\_, 2 \_\_\_\_\_, 3 \_\_\_\_\_, 4 \_\_\_\_\_  
 \_\_\_\_\_, 5 \_\_\_\_\_, 6 \_\_\_\_\_, Time \_\_\_\_\_



# EVENT 28

# MEN'S 600-YARD RUN Saturday, 3:50 p.m.



### Past Champions

- 1966 Henry Brown, Southern LA, 1:14.1
- 1967 Larry Dillon, Texas Southern, (746 yds) 1:37.5
- 1968 Thurman Boggess, Prairie View TX, 1:13.4
- 1969 Pat Bynoe, Eastern Michigan, 1:13.0
- 1970 Paul Blalock, Yankton SD, 1:13.0
- 1971 Larry Zaragoza, Adams State CO, 1:13.0
- 1972 Ray Geter, Prairie View TX, 1:12.2
- 1973 Ray Geter, Prairie View TX, 1:12.4
- 1974 Ray Geter, Prairie View TX, 1:12.2
- 1975 Aubrey Wilson, Fisk TN, 1:12.52
- 1976 Robert Bryant, Delaware State, 1:11.90
- 1977 Gerald Masterson, Ouachita Baptist AR, 1:09.97
- 1978 Rickey Myles, Jackson State MS, 1:12.01
- 1979 Robert Bryant, Delaware State, 1:12.68
- 1980 Joe Johnston, Prairie View TX, 1:12.23
- 1981 Eugene Sanders, Mississippi Valley, 1:09.63
- 1982 Eugene Sanders, Mississippi Valley, 1:11.66
- 1983 Eugene Sanders, Mississippi Valley, 1:11.66
- 1984 Billy Konchella, Wayland Baptist TX, 1:10.86
- 1985 Devon Morris, Wayland Baptist TX, 1:10.54
- 1986 Devon Morris, Wayland Baptist TX, 1:10.28
- 1987 Patrick Nwanzuzo, Wayland Baptist TX, 1:12.64

Sponsored by  
**ARCH BILLMIRE**

### 600-YARD RUN RECORDS

**NAIA — 1:09.63, Eugene Sanders, Mississippi Valley State, 1981**  
**AUDITORIUM — 1:09.2, Dave Crook, Nebraska, 1966**



**EUGENE SANDERS**  
Mississippi Valley  
NAIA Record Holder

| NO. | NAME             | GR | SCHOOL                  | MARK    | NO. | NAME               | GR | SCHOOL                  | MARK    |
|-----|------------------|----|-------------------------|---------|-----|--------------------|----|-------------------------|---------|
| 386 | Lorenzo McGill   | Jr | Wayland Baptist TX      | 1:04.44 | 281 | Todd Buskstrand    | Sp | Bemidji State MN        | 1:15.40 |
| 79  | Mike Dewerriff   | Sp | Moorhead State MN       | 1:08.04 | 108 | Richard Miller     | Sp | Northwestern IA         | 1:15.51 |
| 85  | Scott Nitschke   | Jr | Moorhead State MN       | 1:08.04 | 45  | Darin Chartier     | Fr | Doane NE                | 1:15.53 |
| 381 | Rodney Eiboy     | Jr | Wayland Baptist TX      | 1:10.04 | 427 | William Carter     | Sr | Southwestern KS         | 1:15.54 |
| 516 | Eric Pogue       | Sr | Prairie View A&M TX     | 1:10.66 | 111 | Steve Van Otterloo | Sp | Northwestern IA         | 1:15.62 |
| 490 | Eugene Spears    | Sp | Central State OK        | 1:11.22 | 417 | Peter Setimela     | Sp | Oklahoma Christian      | 1:15.84 |
| 517 | Tyron Ricks      | Sp | Prairie View A&M TX     | 1:11.27 | 250 | Dan Anderson       | Fr | Malone OH               | 1:16.14 |
| 472 | Mark Davis       | Jr | Central State OK        | 1:11.68 | 378 | Gilbert Chapel     | Jr | Wayland Baptist TX      | 1:15.98 |
| 294 | David Boyd       | Sr | Azusa Pacific CA        | 1:11.88 | 271 | Bryan Rogers       | Fr | Kearney State NE        | 1:16.01 |
| 295 | Paul Dennis      | Jr | Azusa Pacific CA        | 1:12.09 | 370 | Vincent Williams   | Fr | Wayland Baptist TX      | 1:16.01 |
| 409 | Eric VanMatre    | Jr | Harding AR              | 1:12.30 | 324 | Mark Roberts       | Fr | Park MO                 | 1:16.04 |
| 481 | Aaron Sprague    | Sp | Central State OK        | 1:12.72 | 613 | Scott Cummins      | Sp | Biola CA                | 1:16.07 |
| 293 | Carl Arnold      | Jr | Azusa Pacific CA        | 1:12.97 | 181 | Mike Lorelio       | Fr | Malone OH               | 1:16.14 |
| 868 | Tim Steric       | Sp | Hillsdale MI            | 1:13.26 | 384 | Eugene Jackson     | Jr | Wayland Baptist TX      | 1:16.45 |
| 504 | Stanley Bryant   | Sp | Prairie View A&M TX     | 1:13.36 | 159 | Kevin Haines       | Fr | Missouri Baptist        | 1:16.74 |
| 474 | Mike Hogan       | Jr | Central State OK        | 1:13.42 | 322 | Matt Magee         | Sp | Park MO                 | 1:16.74 |
| 212 | Chris Ludka      | Jr | Saginaw Valley State MI | 1:13.42 | 428 | Gary Dick          | Fr | Southwestern KS         | 1:16.94 |
| 104 | Doug Abel        | Jr | Northwestern IA         | 1:13.43 | 234 | Steve Henslar      | Jr | Wisconsin-Eau Claire    | 1:17.04 |
| 191 | Anthony Carney   | Jr | Oklahoma Baptist        | 1:13.44 | 208 | Craig Fuerst       | Fr | Saginaw Valley State MI | 1:17.12 |
| 477 | Mitch Nelson     | Jr | Central State OK        | 1:13.53 | 460 | Bill Birt          | Sp | Pittsburg State KS      | 1:17.14 |
| 368 | Larry Watt       | Jr | Wayland Baptist TX      | 1:13.55 | 528 | David Clyma        | Fr | Emporia State KS        | 1:17.14 |
| 475 | Kenneth Lemons   | Sp | Central State OK        | 1:13.62 | 221 | Mark Braudlin      | Fr | Saginaw Valley State MI | 1:17.20 |
| 528 | Shawn Brewer     | Fr | Emporia State KS        | 1:14.14 | 544 | Steve Shaw         | Jr | Tri-State IN            | 1:17.24 |
| 518 | Mark Robertson   | Sp | Prairie View A&M TX     | 1:14.24 | 707 | Tim Janssen        | Jr | Nebraska Wesleyan       | 1:17.34 |
| 728 | Brian Simpson    | Jr | Western State OK        | 1:14.24 | 330 | Jeff Johnson       | Sp | Chadron State NE        | 1:17.54 |
| 372 | Dennis Alexander | Sr | Wayland Baptist TX      | 1:14.29 | 11  | Alfred Jones       | Fr | Central Arkansas        | 1:19.24 |
| 132 | Edgar Clark      | Jr | Southern New Orleans LA | 1:14.31 | 150 | Andrew W. Jones    | Sr | William Jewell MO       | 1:19.59 |
| 105 | Tim Aberson      | Sr | Northwestern IA         | 1:14.41 | 124 | Jason Stevenson    | Fr | Ouachita Baptist AR     | 1:20.22 |
| 412 | Danny Burchell   | Sp | Oklahoma Christian      | 1:14.49 | 364 | Pat Cowin          | Sp | Tabor KS                | 1:22.14 |
| 360 | Duane Wavelle    | Fr | Marion IN               | 1:14.58 | 136 | Derrick Watkins    | Sp | Southern New Orleans LA | NM      |
| 204 | Jeff Boks        | Fr | Saginaw Valley State MI | 1:14.61 | 253 | Keith Billingsley  | Fr | Hastings NE             | NM      |
| 61  | Don Brunzell     | Jr | Fort Hays State KS      | 1:14.64 | 259 | Andre Sanders      | Jr | Hastings NE             | NM      |
| 168 | Eric West        | Sr | Missouri Baptist        | 1:14.74 | 340 | Dave Cook          | Fr | Wisconsin-Milwaukee     | NM      |
| 353 | Darren Parker    | Fr | Missouri Valley         | 1:14.84 | 390 | James Rolle        | Jr | Wayland Baptist TX      | NM      |
| 157 | Paul Dotsun      | Sp | Missouri Baptist        | 1:15.15 | 550 | Tron Dandy         | Sp | Iowa Wesleyan           | NM      |
| 193 | Terry Lawson     | Sp | Oklahoma Baptist        | 1:15.14 | 595 | Dave Carroll       | Sp | Southern Oregon State   | NM      |

Finals Won by \_\_\_\_\_, 2 \_\_\_\_\_, 3 \_\_\_\_\_, 4 \_\_\_\_\_  
 \_\_\_\_\_, 5 \_\_\_\_\_, 6 \_\_\_\_\_, Time \_\_\_\_\_



**WOMEN'S 1000-YARD RUN**  
Saturday, 4:00 p.m.

**EVENT**  
29



**Past Champions**

1981 Donna Bean, Jackson State MS, 2:40.36  
1982 Cathy Schmidt, Saginaw Valley State MI, 2:39.83  
1983 Cathy Schmidt, Saginaw Valley State MI, 2:37.43  
1984 Colleen Booms, Saginaw Valley State MI, 2:40.90  
1985 Janie Romig, Cedarville OH, 2:38.19  
1986 Jane Romig-Brooker, Cedarville OH, 2:36.13  
1987 Cathy Taylor, Prairie View, TX, 2:37.45

Sponsored by  
**B-FOUR COMPUTER RENTALS**

**1000-YARD RUN RECORDS**  
NAIA — 2:36.13, Jane Romig-Brooker, Cedarville OH,  
1986  
AUDITORIUM — 2:36.13, Jane Romig-Brooker, Cedarville  
OH, 1986



**JANE ROMIG-BROOKER**  
Cedarville OH  
NAIA Record Holder

| NO.  | NAME                 | GR | SCHOOL                  | MARK    | NO.  | NAME            | GR | SCHOOL               | MARK    |
|------|----------------------|----|-------------------------|---------|------|-----------------|----|----------------------|---------|
| 896  | Patty LaMoy          | Fr | North Florida           | 2:26.24 | 1043 | Julie Lazarick  | Sp | Wisconsin-Parkside   | 2:52.51 |
| 847  | Melody Das           | Fr | Wayland Baptist TX      | 2:30.50 | 1050 | Colleen Wismar  | Sr | Wisconsin-Parkside   | 2:52.78 |
| 1071 | Margie Schweinert    | Jr | Wisconsin-Milwaukee     | 2:40.64 | 779  | Deb Spickelmier | Jr | Chadron State NE     | 2:53.14 |
| 1074 | Corrina Zimborski    | Jr | Wisconsin-Milwaukee     | 2:41.44 | 738  | Sharon Jenson   | Sr | Western Oregon State | 2:53.24 |
| 1044 | Michelle Marter-Rohl | Sr | Wisconsin-Parkside      | 2:41.47 | 1039 | Jenny Gross     | Fr | Wisconsin-Parkside   | 2:53.49 |
| 1006 | Kathy Waggoner       | Jr | Doane NE                | 2:41.84 | 1041 | Laura Kauffman  | Jr | Wisconsin-Parkside   | 2:54.69 |
| 1045 | Nancy Marter         | Jr | Wisconsin-Parkside      | 2:41.93 | 875  | Cellsa Shy      | Sp | Prairie View A&M TX  | 2:55.24 |
| 964  | Kathy Burgborf       | Sr | Missouri Baptist        | 2:43.04 | 882  | Margot Jobson   | Fr | Tarkio MO            | 2:55.24 |
| 930  | Denise Whelton       | Fr | Hillsdale MI            | 2:44.24 | 979  | Laura Abbott    | Sr | Central Arkansas     | 2:55.24 |
| 914  | Val Ambrose          | Jr | Hillsdale MI            | 2:45.24 | 870  | Tonya Jenkins   | Sp | Prairie View A&M TX  | 2:56.10 |
| 1037 | Lorri DeBlieck       | Fr | Wisconsin-Parkside      | 2:45.56 | 877  | Barbara Smith   | Sp | Prairie View A&M TX  | 2:56.30 |
| 827  | Cindy Blakeley       | Sr | Emporia State KS        | 2:45.84 | 821  | Sandy Moore     | Sr | Malone OH            | 2:57.04 |
| 1019 | Mary Beaumont        | Sp | Midland Lutheran NE     | 2:47.58 | 876  | Joan Simmons    | Sp | Prairie View A&M TX  | 2:57.20 |
| 960  | Carline Mighty       | Fr | Saginaw Valley State MI | 2:48.24 | 1013 | Jana Howard     | Fr | Fort Hays State KS   | 3:00.24 |
| 833  | Jennifer Strader     | Jr | Emporia State KS        | 2:48.83 | 894  | Annie Kniedler  | Jr | North Florida        | 3:05.24 |
| 958  | Ann Griffith         | Sr | Saginaw Valley State MI | 2:49.00 | 1065 | Carrie Haen     | Sp | Wisconsin-Milwaukee  | NM      |
| 1051 | Julie Wunrow         | Jr | Wisconsin-Parkside      | 2:49.63 | 1006 | Anne Hills      | Sr | Wisconsin-Milwaukee  | NM      |

Finals Won by \_\_\_\_\_, 2 \_\_\_\_\_, 3 \_\_\_\_\_, 4 \_\_\_\_\_,  
5 \_\_\_\_\_, 6 \_\_\_\_\_, Time \_\_\_\_\_

**COMPUTER  
RENTALS**

**ALL MAJOR BRANDS:  
Leasing available**

Rental by the day, week,  
month or longer.

**B-Four Computer Rentals**

**492-3399**



The NAIA thanks for  
providing training room  
supplies

The NAIA thanks  
Arch Billmire and  
Johnson & Johnson  
for providing  
training room supplies



**EVENT**  
**30**

**MEN'S 1000-YARD RUN**  
**Saturday, 4:10 p.m.**



**Past Champions**

- |  |   |
|--|---|
| 1966 Bruce Carter, Texas Southern, 2:14.6          | 1977 Richard Newman, Texas Southern, 2:09.93        |
| 1967 Terry Morman, Eastern Michigan, 2:13.0        | 1978 Gerald Masterson, Ouachita Baptist AR, 2:14.44 |
| 1968 Eric Nesbitt, Eastern Michigan, 2:12.2        | 1979 Michael Watson, Jackson State MS, 2:13.33      |
| 1969 Eric Nesbitt, Eastern Michigan, 2:12.5        | 1980 Michael Watson, Jackson State MS, 2:11.17      |
| 1970 Kenth Anderson, U.S. International CA, 2:12.2 | 1981 Clifton Perry, Texas Southern, 2:13.53         |
| 1971 Steve Boehmer, Fort Hays State KS, 2:14.1     | 1982 Joel Ngetich, Wayland Baptist TX, 2:11.02      |
| 1972 Don Hampton, Simon Fraser CAN, 2:15.1         | 1983 Joel Ngetich, Wayland Baptist TX, 2:11.29      |
| 1973 Jon Nelson, Fort Hays State KS, 2:12.9        | 1984 Joel Ngetich, Wayland Baptist TX, 2:13.69      |
| 1974 Dennis Biel, Wisconsin-Parkside, 2:11.5       | 1985 Ernest Bell, Prairie View A&M TX, 2:15.76      |
| 1975 Jeff Cushing, Pembroke State NC, 2:18.40      | 1986 Kisute Kiboko, Wayland Baptist TX, 2:11.62     |
| 1976 Richard Newman, Texas Southern, 2:11.22       | 1987 Kisute Kiboko, Wayland Baptist TX, 2:10.62     |

Sponsored by  
**ALLIS PLAZA HOTEL**

**1000-YARD RUN RECORDS**  
**NAIA — 2:09.93, Richard Newman, Texas Southern, 1977**  
**AUDITORIUM — 2:08.0, Robin Lingle, Missouri, 1966**

| NO. | NAME             | GR | SCHOOL                  | MARK    | NO. | NAME            | GR | SCHOOL                  | MARK    |
|-----|------------------|----|-------------------------|---------|-----|-----------------|----|-------------------------|---------|
| 510 | Cedric Dolphus   | Fr | Prairie View A&M TX     | 2:10.89 | 536 | Scott Starks    | Jr | Emporia State KS        | 2:20.47 |
| 385 | Kisute Kiboko    | Sr | Wayland Baptist TX      | 2:12.48 | 145 | Chuck Novak     | Sp | Walsh OH                | 2:20.50 |
| 383 | Michael Gregory  | Sp | Wayland Baptist TX      | 2:12.75 | 63  | Mike Filley     | Sr | Fort Hays State KS      | 2:21.24 |
| 507 | Anthony Christie | Sp | Prairie View A&M TX     | 2:12.99 | 479 | Adrian Sanchez  | Fr | Central State OK        | 2:22.00 |
| 531 | Roger Jennings   | Jr | Emporia State KS        | 2:13.43 | 12  | Danny Mann      | Fr | Central Arkansas        | 2:22.14 |
| 638 | Donald Sikazwe   | Fr | Edward Waters FL        | 2:14.12 | 314 | Steve Hoodmaker | Sp | Baker KS                | 2:23.04 |
| 639 | Meridith Thomas  | Fr | Edward Waters FL        | 2:14.24 | 484 | Daren Wilson    | Jr | Central State OK        | 2:23.11 |
| 724 | Jose Rojas       | Fr | Western State CO        | 2:14.24 | 541 | Walt Lambert    | Fr | Tri-State IN            | 2:23.34 |
| 632 | Dwayne Barton    | Jr | Edward Waters FL        | 2:14.49 | 545 | Paul Tebbe      | Fr | Tri-State IN            | 2:23.34 |
| 193 | Terry Lawson     | Sp | Oklahoma Baptist        | 2:14.54 | 357 | John Buchanan   | Jr | Marion IN               | 2:24.48 |
| 633 | Shunne Elerby    | Fr | Oklahoma Baptist        | 2:14.72 | 189 | Scott Bostwick  | Fr | Oklahoma Baptist        | 2:24.74 |
| 192 | Paul Causey      | Fr | Oklahoma Baptist        | 2:14.74 | 351 | Markus Boyd     | Fr | Missouri Valley MO      | 2:25.94 |
| 450 | Manuel Garcia    | Jr | Lubbock Christian TX    | 2:14.90 | 380 | Paul Dreessen   | Jr | Wayland Baptist TX      | 2:29.23 |
| 165 | Cecil Shy        | Fr | Missouri Baptist        | 2:15.82 | 77  | Brent Brehmer   | Sr | Moorhead State MN       | 2:29.84 |
| 475 | Kenneth Lemons   | Sp | Central State OK        | 2:16.34 | 82  | John Lavin      | Sr | Moorhead State MN       | 2:29.84 |
| 48  | Dave Gibbons     | Fr | Doane NE                | 2:17.04 | 83  | Al Malecha      | Jr | Moorhead State MN       | 2:29.84 |
| 100 | Andy Rinn        | Sp | Midland Lutheran NE     | 2:17.14 | 87  | Jeff Streich    | Sr | Moorhead State MN       | 2:29.84 |
| 62  | Ruben Esparza    | Sr | Fort Hays State KS      | 2:17.44 | 90  | Steve West      | Jr | Moorhead State MN       | 2:29.84 |
| 202 | Brad Abendroth   | Jr | Saginaw Valley State MI | 2:17.44 | 91  | Greg Zahaika    | Fr | Moorhead State MN       | 2:29.84 |
| 167 | Darren Strickler | Jr | Missouri Baptist        | 2:17.58 | 247 | Nick Melling    | Fr | North Florida           | 2:30.24 |
| 210 | Todd Graham      | Fr | Oklahoma Baptist        | 2:17.80 | 243 | Alton Barnes    | Fr | North Florida           | 2:31.24 |
| 204 | Jeff Boks        | Fr | Saginaw Valley State MI | 2:17.85 | 600 | Kevin Martin    | Jr | Mid America Nazarene KS | 2:31.24 |
| 435 | Mike Pope        | Fr | Southwestern KS         | 2:18.14 | 371 | Darnell Adams   | Jr | Wayland Baptist TX      | 2:33.21 |
| 441 | Doug Stanton     | Sp | Southwestern KS         | 2:18.54 | 107 | Chris Halligan  | Jr | Northwestern College IA | 2:36.04 |
| 147 | Marvin Smith     | Sr | Walsh OH                | 2:18.60 | 257 | Gary Mages      | Jr | Hastings NE             | 2:41.44 |
| 56  | Shawn Wheelock   | Jr | Doane NE                | 2:18.68 | 343 | Tim Malloy      | Sp | Wisconsin-Milwaukee     | NM      |
| 445 | Abel Almandariz  | Jr | Lubbock Christian TX    | 2:18.79 | 464 | Gary Mortell    | Fr | Pittsburg State KS      | NM      |
| 425 | Dallas Bergstrom | Jr | Southwestern KS         | 2:19.04 | 553 | Charles Grim    | Jr | Iowa Wesleyan           | NM      |
| 438 | Troy Scarlett    | Jr | Southwestern KS         | 2:19.64 | 611 | Keith Averill   | Sr | Biola CA                | NM      |



**RICHARD NEWMAN**  
Texas Southern  
NAIA Record Holder

Finals Won by \_\_\_\_\_, 2 \_\_\_\_\_, 3 \_\_\_\_\_, 4 \_\_\_\_\_  
5 \_\_\_\_\_, 6 \_\_\_\_\_, Time \_\_\_\_\_

The  
ALLIS  
PLAZA  
HOTEL  
is a

**PROUD**

sponsor  
of the  
1988  
NAIA  
Track &  
Field Championship.



200 W. 12th Street,  
Kansas City, MO 64105



# WOMEN'S DISTANCE MEDLEY RELAY EVENT

Saturday, 4:45 p.m.



### Past Champions

1982 Texas Southern, 12:41.01  
 1983 Wisconsin-LaCrosse, 12:09.55  
 1984 Midland Lutheran NE, 12:02.93  
 1985 Midland Lutheran NE, 12:04.52  
 1986 Kearney State NE, 12:10.77  
 1987 Kearney State NE, 12:26.18



(L to R) SHELLEY DOWNER, KARLA CHRISTENSEN, SUSAN DOWNER, VIRGIE BULLIE  
 MIDLAND LUTHERAN College, Fremont, NE  
 NAIA National Indoor DMR Record Holders  
 1985

**DISTANCE MEDLEY RELAY RECORDS**

**NAIA — 12:02.93, Midland Lutheran NE, 1984**  
**AUDITORIUM — 11:57.90, Drake IA, 1982**

| NO.  | NAME                 | SCHOOL               | MARK     |
|------|----------------------|----------------------|----------|
| 251  | North Florida        | North Florida        | 12:21.24 |
| 103  | Midland Lutheran NE  | Midland Lutheran NE  | 12:22.69 |
| 348  | Wisconsin-Milwaukee  | Wisconsin-Milwaukee  | 12:24.94 |
| 673  | Hillsdale MI         | Hillsdale MI         | 12:29.54 |
| 728  | Western State CO     | Western State CO     | 12:30.24 |
| 242  | Wisconsin-Eau Claire | Wisconsin-Eau Claire | 12:35.24 |
| 537  | Emporia State KS     | Emporia State KS     | 12:38.91 |
| 279  | Kearney State NE     | Kearney State NE     | 12:41.84 |
| 715  | Nebraska Wesleyan    | Nebraska Wesleyan    | 12:48.92 |
| 224  | Saginaw Valley MI    | Saginaw Valley MI    | 12:50.24 |
| 42   | Concordia NE         | Concordia NE         | 13:14.30 |
| 423  | Oklahoma Christian   | Oklahoma Christian   | 13:16.04 |
| 1052 | Wisconsin-Parkside   | Wisconsin-Parkside   | 13:17.34 |
| 410  | Harding AR           | Harding AR           | 13:25.44 |
| 173  | Missouri Baptist     | Missouri Baptist     | 13:33.24 |
| 316  | Baker KS             | Baker KS             | 13:35.16 |
| 17   | Central Arkansas     | Central Arkansas     | 13:36.34 |
| 500  | Western Oregon       | Western Oregon State | NM       |

Finals Won by \_\_\_\_\_, 2 \_\_\_\_\_, 3 \_\_\_\_\_, 4 \_\_\_\_\_,  
 5 \_\_\_\_\_, 6 \_\_\_\_\_, Time \_\_\_\_\_



# MEN'S DISTANCE MEDLEY RELAY EVENT

Saturday, 5:25 p.m.



### Past Champions

1977 Oklahoma Christian, 10:01.00  
 1978 Oklahoma Christian, 10:12.52  
 1979 Oklahoma Christian, 10:09.48  
 1980 Jackson State MS, 10:12.48  
 1981 Oklahoma Christian, 10:11.23  
 1982 Central State OK, 10:12.73  
 1983 Oklahoma Christian, 10:04.69  
 1984 Oklahoma Christian, 10:08.94  
 1985 Pittsburg State KS, 10:09.27  
 1986 Adams State CO, 10:05.73  
 1987 Southwestern KS, 7:42.49



**GARY TATUM**



**BOBBY SMITH**

**DISTANCE MEDLEY RELAY RECORDS**

**NAIA — 10:01.00, Oklahoma Christian, 1977**  
**AUDITORIUM — 10:01.00, Oklahoma Christian, 1977**

| NO. | NAME                 | SCHOOL               | MARK     |
|-----|----------------------|----------------------|----------|
| 692 | Adams State CO       | Adams State CO       | 10:05.24 |
| 391 | Wayland Baptist TX   | Wayland Baptist TX   | 10:08.13 |
| 224 | Saginaw Valley MI    | Saginaw Valley MI    | 10:12.40 |
| 173 | Missouri Baptist     | Missouri Baptist     | 10:14.34 |
| 444 | Southwestern KS      | Southwestern KS      | 10:15.43 |
| 860 | Anderson IN          | Anderson IN          | 10:15.80 |
| 348 | Wisconsin-Milwaukee  | Wisconsin-Milwaukee  | 10:17.04 |
| 242 | Wisconsin-Eau Claire | Wisconsin-Eau Claire | 10:17.24 |
| 728 | Western State CO     | Western State CO     | 10:17.24 |
| 309 | Azusa Pacific CA     | Azusa Pacific CA     | 10:20.54 |
| 537 | Emporia State KS     | Emporia State KS     | 10:22.34 |
| 103 | Midland Lutheran NE  | Midland Lutheran NE  | 10:23.40 |
| 326 | Park MO              | Park MO              | 10:23.64 |
| 201 | Oklahoma Baptist     | Oklahoma Baptist     | 10:24.24 |
| 251 | North Florida        | North Florida        | 10:24.64 |
| 59  | Doane NE             | Doane NE             | 10:26.34 |
| 673 | Hillsdale MI         | Hillsdale MI         | 10:28.50 |
| 410 | Harding AR           | Harding AR           | 10:31.10 |
| 73  | Fort Hays State KS   | Fort Hays State KS   | 10:31.94 |
| 610 | Rio Grande OH        | Rio Grande OH        | 10:32.34 |
| 148 | Walsh OH             | Walsh OH             | 10:33.44 |
| 42  | Concordia NE         | Concordia NE         | 10:37.54 |
| 500 | Western Oregon       | Western Oregon State | 10:37.54 |
| 153 | William Jewell MO    | William Jewell MO    | 10:38.24 |
| 279 | Kearney State NE     | Kearney State NE     | 10:38.60 |
| 457 | Lubbock Christian TX | Lubbock Christian TX | 10:46.99 |
| 715 | Nebraska Wesleyan    | Nebraska Wesleyan    | 10:50.44 |
| 643 | Edward Waters FL     | Edward Waters FL     | 10:51.45 |
| 316 | Baker KS             | Baker KS             | 10:56.34 |
| 290 | Manchester IN        | Manchester IN        | NM       |
| 423 | Oklahoma Christian   | Oklahoma Christian   | NM       |
| 470 | Pittsburg State KS   | Pittsburg State KS   | NM       |
| 485 | Central State OK     | Central State OK     | NM       |
| 558 | Iowa Wesleyan        | Iowa Wesleyan        | NM       |



**RON STRANGELAND**



**STEVE WOLFE**

**OKLAHOMA CHRISTIAN** NAIA Record Holders

Finals Won by \_\_\_\_\_, 2 \_\_\_\_\_, 3 \_\_\_\_\_, 4 \_\_\_\_\_,  
 5 \_\_\_\_\_, 6 \_\_\_\_\_, Time \_\_\_\_\_





# EVENT 33

# WOMEN'S MILE RELAY Saturday, 5:55 p.m.



**VOGEL NEWSOME**  
Mississippi Valley State



**CAROL WILLIAMS**  
Mississippi Valley State

### MILE RELAY RECORDS

**NAIA** 3:46.23, Mississippi Valley State, 1982

**AUDITORIUM** — 3:46.23, Mississippi Valley State, 1982

### Past Champions

- 1981 Mississippi Valley State, 3:55.81
- 1982 Mississippi Valley State, 3:46.23
- 1983 Prairie View TX, 3:48.31
- 1984 Prairie View TX, 3:47.13
- 1985 Prairie View TX, 3:51.46
- 1986 Wayland Baptist TX, 3:55.31
- 1987 Prairie View TX, 3:51.37

| NO.  | NAME                 | SCHOOL               | MARK    |
|------|----------------------|----------------------|---------|
| 522  | Prairie View A&M TX  | Prairie View A&M TX  | 3:50.24 |
| 391  | Wayland Baptist TX   | Wayland Baptist TX   | 3:53.01 |
| 224  | Saginaw Valley MI    | Saginaw Valley MI    | 3:59.52 |
| 59   | Doane NE             | Doane NE             | 4:06.06 |
| 112  | Northwestern IA      | Northwestern IA      | 4:06.44 |
| 42   | Concordia NE         | Concordia NE         | 4:08.11 |
| 173  | Missouri Baptist     | Missouri Baptist     | 4:09.11 |
| 242  | Wisconsin-Eau Claire | Wisconsin-Eau Claire | 4:09.24 |
| 94   | Moorhead State MN    | Moorhead State MN    | 4:09.34 |
| 1052 | Wisconsin-Parkside   | Wisconsin-Parkside   | 4:09.81 |
| 185  | Malone OH            | Malone OH            | 4:10.44 |
| 1060 | Bemidji State MN     | Bemidji State MN     | 4:11.84 |
| 264  | Hastings NE          | Hastings NE          | 4:12.34 |
| 470  | Pittsburg State KS   | Pittsburg State KS   | 4:15.44 |
| 279  | Kearney State NE     | Kearney State NE     | 4:17.04 |
| 73   | Fort Hays State KS   | Fort Hays State KS   | 4:18.24 |
| 423  | Oklahoma Christian   | Oklahoma Christian   | 4:20.24 |
| 567  | Bethany KS           | Bethany KS           | 4:32.54 |
| 764  | Tabor KS             | Tabor KS             | 4:39.44 |
| 348  | Wisconsin-Milwaukee  | Wisconsin-Milwaukee  | NM      |
| 558  | Iowa Wesleyan        | Iowa Wesleyan        | NM      |

Finals Won by \_\_\_\_\_, 2 \_\_\_\_\_, 3 \_\_\_\_\_, 4 \_\_\_\_\_,  
5 \_\_\_\_\_, 6 \_\_\_\_\_, Time \_\_\_\_\_



# EVENT 34

# MEN'S MILE RELAY Saturday, 6:05 p.m.



### MILE RELAY RECORDS

**NAIA** — 3:16.55, Wayland Baptist TX, 1985

**AUDITORIUM** — 3:15.0, Southern-Baton Rouge LA, 1966

### Past Champions

- 1966 Southern LA, 3:15.0
- 1967 Arkansas AM&N, 3:17.3
- 1968 Prairie View TX, 3:19.2
- 1969 Arkansas AM&N, 3:17.1
- 1970 Prairie View TX, 3:19.9
- 1971 Prairie View TX, 3:21.1
- 1972 Nebraska-Omaha, 3:21.7
- 1973 Jackson State MS, 3:21.2
- 1974 Mississippi Valley, 3:20.2
- 1975 Mississippi Valley, 3:23.70
- 1976 Texas Southern, 3:20.81
- 1977 Southern LA, 3:16.24
- 1978 Southern LA, 3:18.92
- 1979 Southern LA, 3:19.45
- 1980 Prairie View TX, 3:17.09
- 1981 Texas Southern, 3:17.21
- 1982 Mississippi Valley, 3:17.22
- 1983 Texas Southern, 3:18.87
- 1984 Saginaw Valley MI, 3:17.11
- 1985 Wayland Baptist TX, 3:16.55
- 1986 Wayland Baptist TX, 3:17.32
- 1987 Wayland Baptist TX, 3:19.46

| NO. | NAME                 | SCHOOL                  | MARK    | NO. | NAME                | SCHOOL              | MARK    |
|-----|----------------------|-------------------------|---------|-----|---------------------|---------------------|---------|
| 391 | Wayland Baptist TX   | Wayland Baptist TX      | 3:11.80 | 103 | Midland Lutheran NE | Midland Lutheran NE | 3:27.68 |
| 309 | Azusa Pacific CA     | Azusa Pacific CA        | 3:12.97 | 224 | Saginaw Valley MI   | Saginaw Valley MI   | 3:28.02 |
| 457 | Lubbock Christian TX | Lubbock Christian TX    | 3:16.95 | 715 | Nebraska Wesleyan   | Nebraska Wesleyan   | 3:28.34 |
| 522 | Prairie View A&M TX  | Prairie View A&M TX     | 3:17.74 | 42  | Concordia NE        | Concordia NE        | 3:29.14 |
| 643 | Edward Waters FL     | Edward Waters FL        | 3:18.44 | 73  | Fort Hays State KS  | Fort Hays State KS  | 3:30.24 |
| 138 | Southern-New Orleans | Southern-New Orleans LA | 3:21.61 | 444 | Southwestern KS     | Southwestern KS     | 3:30.44 |
| 673 | Hillsdale MI         | Hillsdale MI            | 3:21.91 | 577 | Henderson State AR  | Henderson State AR  | 3:30.64 |
| 173 | Missouri Baptist     | Missouri Baptist        | 3:22.24 | 112 | Northwestern IA     | Northwestern IA     | 3:30.94 |
| 485 | Central State OK     | Central State OK        | 3:22.97 | 631 | McPherson KS        | McPherson KS        | 3:32.01 |
| 201 | Oklahoma Baptist     | Oklahoma Baptist        | 3:22.99 | 558 | Iowa Wesleyan       | Iowa Wesleyan       | 3:32.84 |
| 279 | Kearney State NE     | Kearney State NE        | 3:23.04 | 610 | Rio Grande OH       | Rio Grande OH       | 3:33.24 |
| 356 | Missouri Valley      | Missouri Valley         | 3:23.54 | 594 | Tarkio MO           | Tarkio MO           | 3:34.24 |
| 423 | Oklahoma Christian   | Oklahoma Christian      | 3:24.04 | 128 | Ouachita Baptist AR | Ouachita Baptist AR | 3:35.14 |
| 59  | Doane NE             | Doane NE                | 3:24.75 | 264 | Hastings NE         | Hastings NE         | 3:36.24 |
| 650 | Southern Arkansas    | Southern Arkansas       | 3:25.04 | 17  | Central Arkansas    | Central Arkansas    | 3:37.24 |
| 94  | Moorhead State MN    | Moorhead State MN       | 3:25.24 | 567 | Bethany KS          | Bethany KS          | 3:37.64 |
| 242 | Wisconsin-Eau Claire | Wisconsin-Eau Claire    | 3:25.24 | 348 | Wisconsin-Milwaukee | Wisconsin-Milwaukee | NM      |
| 470 | Pittsburg State KS   | Pittsburg State KS      | 3:26.13 | 621 | Biola CA            | Biola CA            | NM      |

Finals Won by \_\_\_\_\_, 2 \_\_\_\_\_, 3 \_\_\_\_\_, 4 \_\_\_\_\_,  
5 \_\_\_\_\_, 6 \_\_\_\_\_, Time \_\_\_\_\_

23rd Annual Men's,  
8th Annual Women's



# NAIA NATIONAL INDOOR TRACK AND FIELD CHAMPIONSHIPS



February 26 and 27, 1988

Municipal Auditorium, Kansas City, Missouri

Tickets: \$3, \$4, \$5 (Group discounts available)

## Youth Clinic on Skills and Techniques featuring



**Christian Okoye**  
Kansas City Chiefs

Winner of the 1987 Mack Lee Hill Award as the Chief's top rookie, Okoye led NFL rookies with 660 yards rushing. A native of Enugu, Nigeria, Okoye won a record 19 NAIA All-American honors as a standout athlete at Azusa Pacific University (CA). He holds NAIA records in the discus and weight throw and was named outstanding male performer at the 1986 outdoor championship.



**Saturday, Feb. 27**  
**10-11:30 a.m.**  
**Grades 1-12**



**Innocent Egbunike**  
1984 Olympian

Another star athlete in Azusa Pacific's track dynasty, Egbunike is a 400-meter specialist. Few people have run a faster 400-meter than Egbunike. His 12 marks within the 44-second range during the 1987 track season is not only an all-time best, but establishes Egbunike as a favorite to capture the gold medal at the Summer Olympics in Seoul.

*Clinic participation includes ticket for Saturday's events  
and autograph session with Christian Okoye and Innocent Egbunike.*



13915 West 107th Street  
Lenexa KS 66215  
(913) 469-6800

## Dimension Graphics, Inc.

4 Color Printing - Web & Sheetfed Offset

*"Specialists in Direct Mail Response"*

Tempo's advanced dynamic exterior styling reflects Ford's growing reputation for design leadership. The same holds true for Tempo's newly refined interior. So that inside and out, there's no doubt that this is a *new* Tempo. One designed with the driver in mind.

**It's not just a car. It's a driver's car.**

Front-wheel drive. A more powerful multi-port electronic fuel-injected engine. Four-wheel independent suspension. And power-assisted rack-and-pinion steering. All combine to create a car capable of handling almost any kind of road.

The new Ford Tempo. Whether you choose the smooth performance of a GL or LX. The enhanced performance of the GLS model. Or the extra traction of Tempo All-Wheel-Drive, you will be able to express your driving ambition in more sophisticated terms.

**6-Year/60,000-Mile Powertrain Warranty.**

Covers major powertrain components for

6 years/60,000 miles. Restrictions and deductible apply. Also, participating dealers back their customer-paid work with a free Lifetime Service Guarantee, good for as long as you own your vehicle. Ask to see these limited warranties when you visit your Ford Dealer.

**Ford. Best-built American cars...seven years running.**

Based on an average of owner-reported problems in a series of surveys of '81-'87 models designed and built in North America. At Ford, "Quality is Job 1"

Buy or lease the new Tempo at your Ford Dealer.

## New Ford Tempo.

Built in Kansas City  
for Kansas City

Driving ambition.  
Expressed in  
sophisticated terms.

See your Greater Kansas City  
Ford Dealer today!



Buckle up—together we can save lives.

Have you driven a Ford...lately?

