

---

1968

## Cedarville vs. Defiance

Cedarville College

Follow this and additional works at: [https://digitalcommons.cedarville.edu/womens\\_basketball\\_statistics](https://digitalcommons.cedarville.edu/womens_basketball_statistics)



Part of the [Higher Education Commons](#), and the [Sports Studies Commons](#)

---

### Recommended Citation

Cedarville College, "Cedarville vs. Defiance" (1968). *Women's Basketball Statistics*. 25.  
[https://digitalcommons.cedarville.edu/womens\\_basketball\\_statistics/25](https://digitalcommons.cedarville.edu/womens_basketball_statistics/25)

This Statistics is brought to you for free and open access by DigitalCommons@Cedarville, a service of the Centennial Library. It has been accepted for inclusion in Women's Basketball Statistics by an authorized administrator of DigitalCommons@Cedarville. For more information, please contact [digitalcommons@cedarville.edu](mailto:digitalcommons@cedarville.edu).

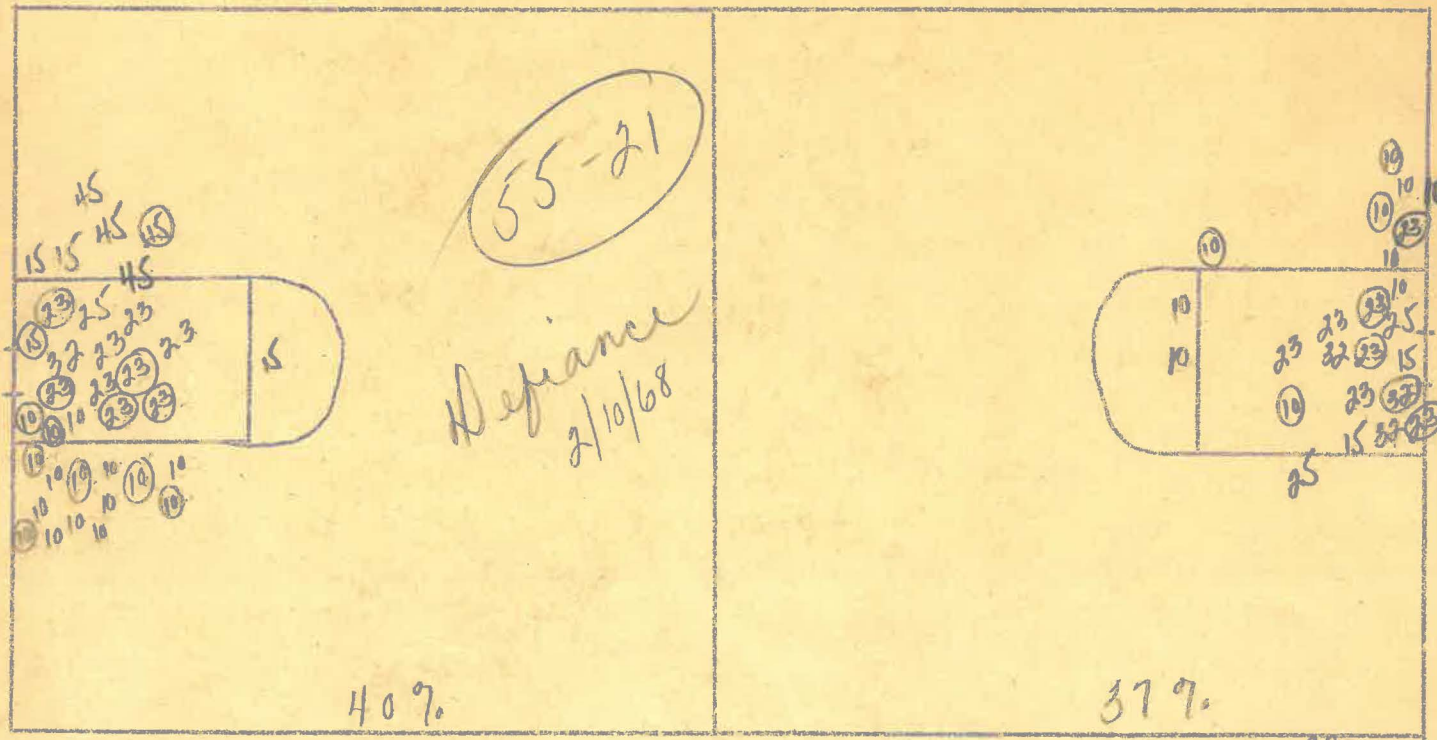
GIRLS' BASKETBALL STATISTICS

Cedarville vs. Defiance at Defiance Date 2/10/68 Final score 55-21

NAME	Off. Rebds.	Def. Rebds.	Fouls	Bad Pass	Traveling	Failed to meet ball	3 Sec.	Shots	Shots Made	%	Foul Shots	F. Shots Made	%
R. Brown	1	2	-	-	1	1	-	3	0	0%	-	-	-
B. Carlson	1	-	1	-	-	-	-	4	1	25%	-	-	-
M. Butler	-	2	1	-	-	-	-	-	-	-	-	-	-
B. Kenal	1	-	1	-	-	-	-	4	1	25%	3	0	0%
D. Mann	-	+	2	1	-	-	-	6	1	17%	11	5	46%
K. Rau	-	3	2	2	-	-	-	-	-	-	-	-	-
L. Walker	2	4	1	1	-	2	-	15	9	60%	5	3	60%
L. Wessel	-	3	3	1	2	-	-	-	-	-	-	-	-
P. Wissinger	7	1	-	-	-	-	-	26	11	42%	2	1	50%
TOTAL	12	16	11	5	3	3	0	58	23	39%	21	9	43%

Shooting Percentage First Half 40% Second Half 37% Game 39%

Name	End Pass	Traveling	Failed to meet ball	3 Sec.	In lane too soon	would	Off. Rbld.	Def. Sub.
Lois - 9-15 23 60%								
Nancy - 25								
Pat - 10 <sup>11-26</sup> 42%								
Barb - 32 <sup>1-4</sup> 25%								
Karen - 30								
Lynda - 22								
Darlene - 15 <sup>1-6</sup> 19%								
Bev - 45 <sup>1-4</sup> 25%							)	
Marilyn - 20								



1st  
35 | 14.00  
14 0

15 | 9.00  
6 | 1.00

26 | 11.00  
10 4  
60  
22

24 | 9.00  
7 2  
180  
168