

10-11-2017

Comparing Performance Category Criteria for U.S. Navy Alternate Physical Readiness Tests

A. Latour

David D. Peterson
Cedarville University, ddpeterson@cedarville.edu

M. Rittenhouse

D. Riner

Follow this and additional works at: http://digitalcommons.cedarville.edu/kinesiology_and_allied_health_publications

 Part of the [Exercise Science Commons](#)

Recommended Citation

Latour, A.; Peterson, David D.; Rittenhouse, M.; and Riner, D., "Comparing Performance Category Criteria for U.S. Navy Alternate Physical Readiness Tests" (2017). *Kinesiology and Allied Health Faculty Publications*. 59.
http://digitalcommons.cedarville.edu/kinesiology_and_allied_health_publications/59

This Article is brought to you for free and open access by DigitalCommons@Cedarville, a service of the Centennial Library. It has been accepted for inclusion in Kinesiology and Allied Health Faculty Publications by an authorized administrator of DigitalCommons@Cedarville. For more information, please contact digitalcommons@cedarville.edu.

Research Article

Comparing Performance Category Criteria for U.S. Navy Alternate Physical Readiness Tests

Latour A*, Peterson D, Rittenhouse M, Riner D

Department of Exercise Physiology, United States Naval Academy, USA

***Corresponding author:** Austin Latour, Department of Exercise Physiology, United States Naval Academy, USA. Tel: +14102934427; Email: latour@usna.edu

Citation: Latour A, Peterson D, Rittenhouse M, Riner D (2017) Comparing Performance Category Criteria for U.S. Navy Alternate Physical Readiness Tests. Sports Injr Med: JSIMD-115. DOI: 10.29011/JSIMD-115.100015

Received Date: 25 April, 2017; **Accepted Date:** 2 October, 2017; **Published Date:** 11 October, 2017

Abstract

The current Navy Physical Readiness Test (PRT) allows for several alternative methods, in lieu of the 1.5-mile run, with which to assess aerobic fitness. Two of these methods (elliptical trainer and stationary bike) and two additional devices (2-Km rower and 5-Km bike) were evaluated to determine if maximal effort on all devices produced the same performance category as the 1.5-mile run. One hundred thirty-two active-duty military and midshipmen were recruited from the United States Naval Academy and Naval Support Activity Annapolis. Subjects participated in six testing sessions over a six-week period. Subjects performed a 1.5-mile run ($n = 118$), 12-minute elliptical trainer test ($n = 108$), 12-minute stationary bike test ($n = 115$), 2-Km rower test ($n = 115$), and 5-Km bike test ($n = 114$). Each performance category attained from the alternate aerobic test device was compared to the performance category attained for the 1.5-mile run. None of the aerobic testing devices performance categories matched well to the 1.5-mile run. The results of the testing sessions support the mandated use of the 1.5-mile run as the sole method of assessing aerobic fitness. Additionally, if an alternate method must be used, the 12-minute stationary bike test using the revised Naval Health Research Center (NHRC) performance categories might be the best option because it has the largest number of performance matching categories. Finally, the results do not support the use of the 12-minute elliptical test, as an authorized alternative, due to its minimal number of matching categories.

Keywords: Navy; Physical; Readiness

Introduction

The Department of Defense (DoD) mandates that each branch of military service performs a semi-annual Physical Fitness Assessment (PFA) on its personnel (DoD, 2004). The information obtained from the PFA provides service members with information regarding their physical fitness level while ensuring personnel possess the minimum requirements necessary to support the mission (Department of the Navy [DON], 2011). Per the DoD instruction, each branch of service is required to assess body composition, muscular strength, muscular endurance, and aerobic fitness (DoD, 2004). However, the DoD allows each service to determine the tests used to assess each of these components of fitness (DoD, 2004).

Due to the large number of personnel in each branch, all four services have opted to implement distance runs to assess aerobic

fitness. Although the gold standard of measuring aerobic fitness is the VO₂max test, it is not feasible for testing large populations. In addition, multiple research studies have determined distance runs to be good indicators of aerobic fitness and can easily be used to test large populations (Buono, 1988; George, Vehrs, Allsen, Fellingham, & Fisher, 1992; Latour, Peterson, Rittenhouse, & Riner, 2017; Weiglein, Herrick, Kirk, & Kirk, 2011). The Navy and Air Force employ the 1.5-mile run and the Army and Marine Corps employ the 2.0-mile run and 3.0-mile run, respectively.

All four services offer alternate aerobic tests in lieu of their service-specific distance run. For example, the Navy offers a 450-meter swim, 500-yard swim, 12-minute elliptical trainer, and 12-minute stationary bike (DON, 2011; Naval Administrative Message [NAVADMIN] 293/06). The Army authorizes an 800-yd swim test, 6.2-mile bicycle ride, and 2.5-mile walk test (Department of the Army, 1998). The Air Force offers a 2.0-mile walk test (Department of the Air Force, 2013). The Marine Corps has

recently added a 5-Km rower test as an alternative Testing method (Marines.mil, 2016). Although each service offers an alternate aerobic test, only the Navy allows service members to participate in alternate tests without a medical waiver (DON, 2011). For the other services, service members must be medically approved in order to participate in an alternate aerobic test.

Recent research has shown that some of the Navy’s alternate aerobic tests are not equivalent to the 1.5-mile run and do not correlate well to VO2max (Latour et al., 2017). In fact, none of the Navy’s alternate aerobic tests actually correlate well to the 1.5-mile run (Latour et al., 2017). Moreover, current findings indicate that the elliptical trainer has a poor correlation to VO2max ($r=.20$) and to the 1.5-mile run ($r=-.34$), calling into question their use as valid tests for assessing a service member’s level of aerobic fitness (Latour et al., 2017).

Accurately reporting Physical Readiness Test (PRT) event scores are paramount as results can directly impact a sailor’s retention and promotion (NAVADMIN 061/16, 2016; NAVADMIN 178/15, 2015). Therefore, in order to ensure minimum physical fitness levels required to support mission requirements as well as prevent inaccurate reporting of service member PRT performance, it is imperative that services implement and employ the most accurate methods of assessing aerobic fitness.

Background

Prior to 2006, the only aerobic tests employed by the Navy were the 1.5-mile run, 450-meter swim, and 500-yard swim. However, Navy leadership expressed the desire to employ additional alternate aerobic tests for those service members who could not or preferred not to run or swim. As a result, the Naval Health Research Center (NHRC) conducted research on the elliptical trainer

and stationary bike as additional alternate aerobic test options. At the time, performance standards for the elliptical trainer and stationary bike did not exist thereby requiring NHRC to develop regression equations that could predict 1.5-mile run times based on calorie expenditure (Hodgdon, Hervig, Griswold, Terry, Le, Sausen, & Miller, 2006; Parker, Griswold, & Vickers, 2006). These regression equations have been incorporated in the Physical Readiness Information Management System (PRIMS) and are used to determine a predicted 1.5-mile run time and performance category determination. However, further research has shown that these regression equations can over or under predict actual 1.5-mile run times by as much as two minutes or more (Peterson, 2015a; Peterson, 2015b; Schilling, 2015).

Despite these concerns, it is unlikely that Navy leadership will eliminate all of the different alternate aerobic fitness tests currently employed. In fact, much of the current PRT has been reviewed previously without any substantial changes to the program (Myers, 2015a; Myers, 2015b; Whitehead, Schilling, Peterson, & Weiss, 2012). For example, the stationary bike has become increasingly popular over the last several years (Table 1). In addition, the other alternate cardio-testing methods have decreased in usage over the past several PFA cycles (Table 1). For example, current elliptical trainer participation has decreased to just over four percent total usage. Similarly, current swim usage (includes both the 450-m and 500-yd swim tests) equates to just over two percent total usage. The low usage of these tests, coupled with their increased administrative burden, may not justify their continued implementation and employment. Even so, since the Navy will likely continue employing alternate aerobic fitness tests, it is imperative that the performance category used to score the aerobic fitness portion of the PRT is equitable regardless of the aerobic fitness modality used for testing.

Table 1
Male Scoring Categories

Performance Category	Points	1.5-mile run (min:sec)	NHRC Elliptical Trainer (Cal/BW)	NHRC Stationary Bike (Cal/BW)	2-Km Rower (min:sec)
Age 17-19 years					
Maximum	100	8:15	1.384	0.968	7:04
Outstanding	90	9:00	1.262	0.866	7:24
Excellent	75	9:45	1.14	0.764	7:46
Good	60	11:00	0.938	0.61	8:09
Satisfactory	45	12:30	0.874	0.561	8:34
Failure	<45	>12:30	<0.874	<0.561	>8:34
Age 20-24 years					
Maximum	100	8:30	1.375	0.959	7:25
Outstanding	90	9:15	1.253	0.857	7:46
Excellent	75	10:30	1.131	0.755	8:09

Citation: Latour A, Peterson D, Rittenhouse M, Riner D (2017) Comparing Performance Category Criteria for U.S. Navy Alternate Physical Readiness Tests. Sports Inj Med: JSIMD-115.

Good	60	12:00	0.929	0.602	8:34
Satisfactory	45	13:30	0.865	0.553	9:00
Failure	<45	>13:30	<0.865	<0.553	>9:00
Age 25-29 years					
Maximum	100	8:55	1.364	0.947	7:47
Outstanding	90	9:38	1.242	0.846	8:09
Excellent	75	10:52	1.12	0.745	8:34
Good	60	12:53	0.918	0.591	9:00
Satisfactory	45	14:00	0.854	0.542	9:27
Failure	<45	>14:00	<0.854	<0.542	>9:27
Age 30-34 years					
Maximum	100	9:20	1.353	0.938	8:10
Outstanding	90	10:00	1.231	0.836	8:34
Excellent	75	11:15	1.109	0.734	9:00
Good	60	13:45	0.907	0.58	9:27
Satisfactory	45	14:30	0.843	0.531	9:54
Failure	<45	>14:30	<0.843	<0.531	>9:54
Age 35-39 years					
Maximum	100	9:25	1.342	0.927	8:34
Outstanding	90	10:08	1.22	0.825	9:00
Excellent	75	11:23	1.098	0.723	9:27
Good	60	14:08	0.896	0.569	9:54
Satisfactory	45	15:00	0.832	0.52	10:24
Failure	<45	>15:00	<0.832	<0.520	>10:24
Age 40-44 years					
Maximum	100	9:30	1.331	0.916	9:00
Outstanding	90	10:15	1.209	0.814	9:27
Excellent	75	11:45	1.087	0.712	9:54
Good	60	14:30	0.885	0.559	10:24
Satisfactory	45	15:30	0.821	0.51	10:55
Failure	<45	>15:30	<0.821	<0.510	>10:55
Age 45-49 years					
Maximum	100	9:33	1.32	0.904	9:28
Outstanding	90	10:30	1.198	0.803	9:54
Excellent	75	12:08	1.076	0.702	10:24
Good	60	14:53	0.874	0.548	10:55
Satisfactory	45	16:08	0.81	0.499	11:28
Failure	<45	>16:08	<0.810	<0.499	>11:28
Age 50-54 years					
Maximum	100	9:35	1.309	0.893	9:56
Outstanding	90	10:45	1.187	0.792	10:24
Excellent	75	12:30	1.065	0.691	10:55

Good	60	15:15	0.864	0.537	11:28
Satisfactory	45	16:45	0.8	0.488	12:03
Failure	<45	>16:45	<0.800	<0.488	>12:03
Age 55-59 years					
Maximum	100	10:42	1.298	0.884	10:26
Outstanding	90	11:25	1.176	0.782	10:55
Excellent	75	13:12	1.054	0.68	11:28
Good	60	16:15	0.852	0.526	12:03
Satisfactory	45	17:09	0.788	0.477	12:39
Failure	<45	>17:09	<0.788	<0.477	>12:39
Age 60-64 years					
Maximum	100	11:21	1.287	0.873	10:57
Outstanding	90	12:04	1.165	0.771	11:28
Excellent	75	13:53	1.043	0.669	12:03
Good	60	17:47	0.841	0.516	12:39
Satisfactory	45	18:52	0.777	0.466	13:18
Failure	<45	>18:52	<0.777	<0.466	>13:18
Age 65+ years					
Maximum	100	11:41	1.276	0.861	11:30
Outstanding	90	12:43	1.154	0.76	12:03
Excellent	75	14:34	1.032	0.659	12:39
Good	60	18:13	0.83	0.505	13:18
Satisfactory	45	20:35	0.766	0.456	13:57
Failure	<45	>20:35	<0.766	<0.456	>13:57
Percent of total Navy personnel using each of the different cardio options in Cycle 1, 2011 (Jan-Jun) and Cycle 2, 2015 (Jul-Dec). Data obtained from Navy Physical Readiness Program Office.					
	500-yd Swim	450-m Swim	Elliptical	Stationary Bike	1.5-mile Run
Cycle 1, 2011	0.99%	1.63%	5.09%	18.97%	72.05%
Cycle 2, 2015	0.83%	1.32%	4.10%	29.92%	63.18%

Table 1: Male Scoring Categories and PFA cycles.

The purpose of this study was to identify the performance categories attained on the 1.5-mile run and compare them to the performance categories attained by the other alternate devices to see if they were equitable. This study compared the performance categories attained for each participant on 1.5-mile run, 12-minute elliptical test (using two sets of performance standards), 12-minute stationary bike (using two sets of performance standards), 5-Km bike, and 2-Km rower. If each aerobic test accurately measures aerobic fitness, then the performance category attained from each test should be identical. If the resulting performance categories attained for the 1.5-mile run is not the same as those attained from the alternative tests, then the alternative tests may not be accurately or equivocally reporting aerobic fitness levels. In order to ensure PRT standardization and fairness, it is imperative that all aerobic tests produce the same performance category results.

Methods

This report is a follow-on study to a previous study by Latour et al. (2017). The complete methods used and description of each test protocol are provided in the previous study.

Subjects

Active duty military (n = 38) and Naval Academy midshipmen (n = 94) were recruited to participate in the testing (n = 132). Participant descriptive information is provided in Table 2.

Citation: Latour A, Peterson D, Rittenhouse M, Riner D (2017) Comparing Performance Category Criteria for U.S. Navy Alternate Physical Readiness Tests. Sports Inj Med: JSIMD-115.

Table 2 Female Scoring Categories					
Performance Category	Points	1.5-mile run (min:sec)	NHRC Elliptical Trainer (Cal/BW)	NHRC Stationary Bike (Cal/BW)	2-Km Rower (min:sec)
Age 17-19 years					
Maximum	100	9:29	1.32	0.968	7:55
Outstanding	90	11:30	1.199	0.866	8:18
Excellent	75	12:30	1.078	0.764	8:42
Good	60	13:30	0.887	0.61	9:09
Satisfactory	45	15:00	0.823	0.561	9:36
Failure	<45	>15:00	<0.823	<0.561	>9:36
Age 20-24 years					
Maximum	100	9:47	1.306	0.959	8:18
Outstanding	90	11:30	1.186	0.857	8:42
Excellent	75	13:15	1.066	0.755	9:09
Good	60	14:15	0.874	0.602	9:36
Satisfactory	45	15:30	0.81	0.553	10:06
Failure	<45	>15:30	<0.810	<0.553	>10:06
Age 25-29 years					
Maximum	100	10:17	1.29	0.947	8:43
Outstanding	90	11:45	1.17	0.846	9:09
Excellent	75	13:23	1.05	0.745	9:36
Good	60	14:53	0.858	0.591	10:06
Satisfactory	45	16:08	0.794	0.542	10:36
Failure	<45	>16:08	<0.794	<0.542	>10:36
Age 30-34 years					
Maximum	100	10:46	1.274	0.938	9:09
Outstanding	90	12:00	1.154	0.836	9:36
Excellent	75	13:30	1.034	0.734	10:06
Good	60	15:30	0.842	0.58	10:36
Satisfactory	45	16:45	0.778	0.531	11:07
Failure	<45	>16:45	<0.778	<0.531	>11:07
Age 35-39 years					
Maximum	100	10:51	1.26	0.927	9:37
Outstanding	90	12:08	1.139	0.825	10:06
Excellent	75	13:45	1.018	0.723	10:36
Good	60	15:53	0.827	0.569	11:07
Satisfactory	45	17:00	0.762	0.52	11:40
Failure	<45	>17:00	<0.762	<0.520	>11:40
Age 40-44 years					
Maximum	100	10:56	1.244	0.916	10:06
Outstanding	90	12:15	1.123	0.814	10:36
Excellent	75	14:00	1.002	0.712	11:07

Citation: Latour A, Peterson D, Rittenhouse M, Riner D (2017) Comparing Performance Category Criteria for U.S. Navy Alternate Physical Readiness Tests. Sports Injr Med: JSIMD-115.

Good	60	16:15	0.811	0.559	11:40	
Satisfactory	45	17:15	0.747	0.51	12:15	
Failure	<45	>17:15	<0.747	<0.510	>12:15	
Age 45-49 years						
Maximum	100	10:58	1.228	0.904	10:36	
Outstanding	90	12:30	1.107	0.803	11:07	
Excellent	75	14:08	0.986	0.702	11:40	
Good	60	16:30	0.795	0.548	12:15	
Satisfactory	45	17:23	0.731	0.499	12:52	
Failure	<45	>17:23	<0.731	<0.499	>12:52	
Age 50-54 years						
Maximum	100	11:00	1.213	0.893	11:07	
Outstanding	90	12:45	1.092	0.792	11:40	
Excellent	75	14:15	0.971	0.691	12:15	
Good	60	16:45	0.78	0.537	12:52	
Satisfactory	45	17:30	0.716	0.488	13:31	
Failure	<45	>17:30	<0.716	<0.488	>13:31	
Age 55-59 years						
Maximum	100	12:23	1.195	0.884	11:41	
Outstanding	90	13:57	1.075	0.782	12:15	
Excellent	75	15:20	0.955	0.68	12:52	
Good	60	17:48	0.763	0.526	13:31	
Satisfactory	45	18:34	0.699	0.477	14:12	
Failure	<45	>18:34	<0.699	<0.477	>14:12	
Age 60-64 years						
Maximum	100	13:34	1.17	0.873	12:16	
Outstanding	90	15:08	1.059	0.771	12:52	
Excellent	75	16:25	0.939	0.669	13:31	
Good	60	18:51	0.747	0.516	14:12	
Satisfactory	45	19:43	0.683	0.466	14:54	
Failure	<45	>19:43	<0.683	<0.466	>14:54	
Age 65+ years						
Maximum	100	14:45	1.163	0.861	12:53	
Outstanding	90	16:19	1.043	0.76	13:31	
Excellent	75	17:30	0.923	0.659	14:12	
Good	60	19:54	0.731	0.505	14:54	
Satisfactory	45	20:52	0.667	0.456	15:39	
Failure	<45	>20:52	<0.667	<0.456	>15:39	
Participant descriptive information						
		Number	Mean	SD	Minimum	Maximum

Male	Height	83	70.66	2.88	65	79
	Weight	84	181.44	25.63	132	251
	Age	84	27.08	9.03	18	54
Female	Height	48	64.73	2.76	59	70
	Weight	48	142.17	21.85	95	201
	Age	47	23.70	6.55	18	51

Table 2: Female Scoring Categories and Participant descriptive information.

All subjects completed the Navy’s standardized PRT warm-up prior to each test and were encouraged to participate in six maximal-effort aerobic tests. These tests included the 12-minute stationary bike, 12-minute elliptical trainer, 5-Km bike, 2-Km rower, 1.5-mile run, and a VO₂max test.

For the 12-minute stationary bike and elliptical trainer tests, only PRT approved devices were used. Each test was 12 minutes in length with an additional two-minute cool down period. Calories burned at the end of 12 minutes was recorded and used for calculating each individual performance category. The 5-Km bike test was performed on a Monark Ergomedic 874E cycle ergometer. Resistance was added based on the participant’s body weight. The participant was instructed to cycle as fast as possible until he/she reached a distance of 5-Km. The time was recorded. The 2-Km rower test was performed on a Concept 2 rower. Each participant was instructed to row as fast as possible until 2,000 meters was attained. The time was recorded. The 1.5-mile run was conducted on a 200-meter indoor track. The participant was instructed to run as fast as possible until 1.5 miles was reached. The time was recorded. Each participant performed a VO₂max test on a ParvoMedics TrueOne 2400. The participant was asked to run on the treadmill as long as possible and to provide a maximal effort.

Body weight, height, and age were measured and recorded before the first test. To limit the chance of fatigue and ensure recovery, subjects were required to wait 48 hours between each test; however, all tests needed to be completed in a six-week period to reduce the effect of increased or decreased aerobic performance. All subjects were asked to provide a maximal effort for each test.

For the 12-minute stationary bike, two scoring methods were used. The current PRIMS equation was used to determine a 1.5-mile run time (min:sec). This equation predicted a 1.5-mile run time based on the calories burned (indicated on the device) during the 12-minute stationary bike test. A new NHRC developed scoring system was also used to calculate a performance score based on Calories (Cal) and Body Weight (BW) in pounds (Cal/BW) (See Tables). For the PRIMS equation, the calories burned were entered into the official run time calculator located on the PRIMS website. This same method was used for determining predicted 1.5-mile run times and scores for the elliptical trainer.

PRT Scoring Method

Currently, each PRT event is scored for six levels of performance and assigned points based on performance. The different levels of performance are categorized as Maximum (100 points), Outstanding (90-99 points), Excellent (75-89 points), Good (60-74 points), Satisfactory (45-59 points), and Failure (< 45 points) (See Appendix A).

Category Differences

Each performance category obtained (i.e., maximum, outstanding, excellent, good, satisfactory, failure) from an individual’s 1.5-mile run was compared with the performance categories he or she earned on the alternative aerobic tests. Tables 1, 2, 3, and 4 depict the performance categories, associated points, and run times or criterion measure.

When aerobic tests are completed, the performance categories can be compared to each other. If the performance category is not the same for both aerobic tests, (i.e. 1.5-mile run and elliptical trainer), then there is a performance category difference. Because there are six categories, performance category differences can be a difference of one, two, three, four, or five.

For example, if a 17-year-old male acquired a nine-minute and 45-second 1.5-mile run time, his performance category would be “Excellent” (Table 1). If the same individual performed the elliptical trainer alternate aerobic test and PRIMS predicted his run time at nine minutes and 50 seconds (based on calories burned during the test and the PRIMS regression equation), then he would have acquired a performance category of “Good” (Table 1). This performance data would result in a one-category difference. If the same individual were to perform the stationary bike alternate aerobic test and PRIMS predicted his run time as 12:40 and a performance category of “Failure,” then this performance would be a three-category difference (Table 1). Ideally, there should be no difference in categories between an approved device and the 1.5-mile run if a max effort is performed on each test and performance category scoring methods are equivalent.

Results

For each device tested, the performance category attained by each individual was compared to his/her respective perfor-

mance category attained during the 1.5-mile run. For the stationary bike and elliptical trainer, two sets of performance norms were evaluated. The first set (PRIMS bike) uses a prediction equation that converts the number of calories burned in 12 minutes into a predicted 1.5-mile run time. This calculation was completed using the official Navy PRT calculator located on the secure PRIMS website. Once converted, the performance norms for the 1.5-mile run were used to assign a respective performance category (See Tables). The other set (NHRC bike) uses standalone performance norms based on calories burned and body weight. For the 5-Km bike, performance categories were acquired from Buono’s (1988) research (Tables 3 and 4). The performance standards developed by Buono (1988) included only the following performance categories: Outstanding, Excellent, Good, and Satisfactory. Based on the regression equation in Buono’s (1988) paper, the researchers expanded the table to include the Navy’s additional performance categories (i.e., Maximum and Failure). The rower performance category standards are based on the work performed by Peterson (2015a).

Table 3 Male 5K Bike categories in seconds (Buono, 1988)						
Age	Maximum	Outstanding	Excellent	Good	Satisfactory	Failure
17-19	<414	414 - 448	449 - 483	484 - 540	541 - 608	>608
20-24	<426	426 - 459	460 - 516	517 - 585	586 - 653	>653
25-29	<445	445 - 477	478 - 533	534 - 625	626 - 676	>676
30-34	<464	464 - 494	495 - 551	552 - 666	667 - 699	>699
35-39	<468	468 - 500	501 - 557	558 - 682	683 - 722	>722
40-44	<472	472 - 505	506 - 573	574 - 699	700 - 744	>744
45-49	<474	474 - 516	517 - 591	592 - 716	717 - 773	>773
50-54	<476	476 - 528	529 - 608	609 - 733	734 - 801	>801
55-59	<526	526 - 558	559 - 640	641 - 779	780 - 820	>820
60-64	<555	555 - 588	589 - 671	672 - 849	850 - 898	>898
65+	<570	570 - 617	618 - 702	703 - 868	869 - 976	>976

Table 3: Male 5K Bike categories in seconds (Buono, 1988).

Table 4 Female 5K Bike Categories in seconds (Buono, 1988)						
Age	Maximum	Outstanding	Excellent	Good	Satisfactory	Failure
17-19	<471	471 - 562	563 - 608	609 - 653	654 - 722	>722
20-24	<485	485 - 562	563 - 642	643 - 687	688 - 744	>744
25-29	<508	508 - 573	574 - 648	649 - 716	717 - 773	>773
30-34	<530	530 - 585	586 - 653	654 - 744	745 - 801	>801
35-39	<533	533 - 591	592 - 665	666 - 762	763 - 813	>813
40-44	<536	536 - 596	597 - 676	677 - 779	780 - 824	>824
45-49	<538	538 - 608	609 - 682	683 - 790	791 - 830	>830
50-54	<539	539 - 619	620 - 687	688 - 801	802 - 836	>836
55-59	<602	602 - 674	675 - 737	738 - 849	850 - 884	>884
60-64	<656	656 - 728	729 - 786	787 - 897	898 - 937	>937
65+	<710	710 - 782	783 - 836	837 - 945	946 - 989	>989

Table 4: Female 5K Bike Categories in seconds (Buono, 1988).

Category Prediction

None of the alternate tests matched the 1.5-mile run category by 40% or more (Figure 1). When an alternate test does not match the run category, the tests can either over- or under-predict actual 1.5-mile run times. When an alternate test under-predicts, it estimates run times as slower than actual 1.5-mile run times and individuals receive a poorer performance category than if they had performed the 1.5-mile run. When an alternate test over predicts, it estimates run times as faster than they actually are and individuals attain a better performance category than they would have earned on the 1.5-mile run.

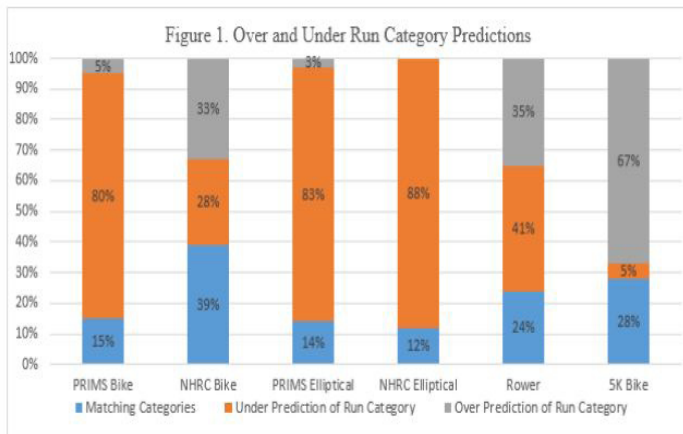


Figure 1: Over and Under Run Category Predictions.

Stationary Bike and Elliptical Trainer

The results indicate that the NHRC bike performance categories matched best with the 1.5-mile performance categories (39%). The PRIMS bike matched 15%. The PRIMS elliptical and NHRC elliptical had the least number of matching categories with 14% and 12% matching categories, respectively.

Overall, the PRIMS bike and PRIMS elliptical scores primarily under-predicted (80% and 83% respectively). The NHRC elliptical trainer primarily under-predicted (88%). In contrast, the NHRC bike was more balanced and under-predicted by 28% while over-predicting by 33%.

5-Km Bike and 2-Km Rower

The 5-Km bike matched second best with 28% matching categories; however, it primarily over-predicted scores (67%). The 2-Km rower had 24% matching categories, 41% under-prediction, and 35% over-prediction.

Run Category Differences

Category differences were reviewed next in order to determine which devices produced results that were closest to the performance categories for the 1.5-mile run. However, because the PRIMS bike and PRIMS elliptical tests are estimating 1.5-mile run times (instead of directly measuring them), a level of error can be expected. Therefore, it is useful to evaluate the alternate tests not only based on how many categories match but also based on the magnitude of the matching errors. As described previously, category differences can range from one-category difference to five-category differences. A device with no category differences and/or one-category difference, may be acceptable for testing purposes when compared to the 1.5-mile run. If a device has a majority of two- or three-category differences and four- or five-category differences, it may not be acceptable for testing purposes (Figure 2)

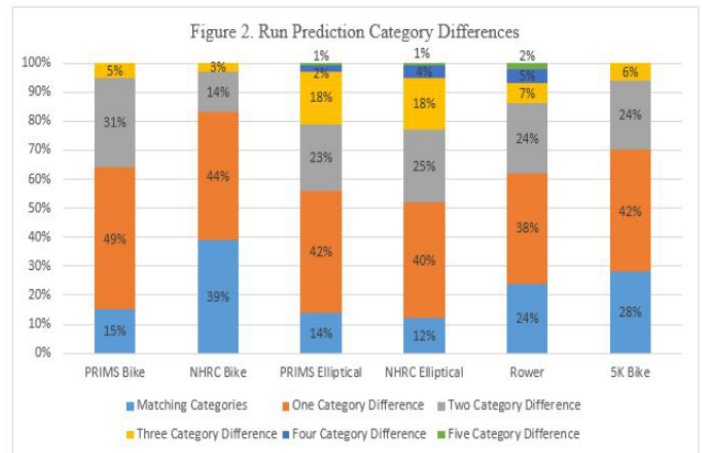


Figure 2: Run Prediction Category Differences.

Stationary Bike and Elliptical Trainer

Although the PRIMS bike contained the least amount of matching categories (15%), it also had the most performance categories that were one category difference (49%) (Figure 2) Combined, it had 64% matching and one-category differences. The PRIMS bike also contained two-category differences (31%) and three-category differences (5%). The NHRC bike produced the most amount of matching and one-category differences combined (83%), making it the alternate device that produced the least amount of difference between the 1.5-mile run scoring categories. Because of this, it may be the most acceptable device and scoring method to use because it matches the 1.5-mile run best. It also produced 14% two-category differences and 3% three-category differences. This was the least amount of two- and three-category differences from all of the devices tested. Also, the NHRC bike had no four- or five-category differences. Overall, based on the category differences alone, the NHRC bike performed the best.

Both the PRIMS elliptical and the NHRC elliptical performed worst in regard to matching categories. Both of the elliptical scoring methods contained the most three- and four-category differences. The PRIMS elliptical contained 41% two- and three-category differences while the NHRC elliptical contained 43%. Both elliptical scoring methods also contained four- and five-category differences which produced poor matching results.

5-Km Bike and 2-Km Rower

The only other device that did not have four- or five-category differences was the 5-Km bike. Overall, the 5-Km bike performed reasonably well, with 70% matching and one-category differences combined (Figure 2). It also did not contain any four- or five-category differences. The 2-Km rower contained 62% matching and one-category differences combined. The remainders of its differences were two, three-, four-, and five-category differences. The

2-Km rower contained the highest four- and five-category differences, which compared to the other devices, it matched poorly to the 1.5-mile run.

Average Category Differences

Table 5 shows that the NHRC bike (m = 4.54) and 2-Km rower (m = 4.21) had closest mean category scores to that of the 1.5 mile run (m = 4.48) while the elliptical scoring methods (PRIMS, m = 3.02; NHRC, m = 2.85) had the highest mean category differences from the run.

	Count	Median	Mean	SD
1.5-Mile Run	127	4	4.48	.90
PRIMS Bike	114	3	3.37	.76
NHRC Bike	114	5	4.54	1.14
PRIMS Elliptical	107	3	3.02	1.19
NHRC Elliptical	107	3	2.85	1.17
2-Km Rower	114	4	4.21	1.59
5K Bike	113	6	5.44	.83

Table 5: Category averages for 1.5-mile run and alternate aerobic devices.

A Friedman’s test was conducted and the results indicate that there was a significant difference in the categories participants achieved using the different exercise devices ($\chi^2(6) = 306.248, p = 0.000$). Post hoc analyses were conducted to compare each device with the 1.5 mile run using a Wilcoxon signed-rank tests with a Bonferroni family-wise error correction which set the significance level at $p < .008$. Significant category differences were found between the 1.5 mile run and the PRIMS bike ($Z = -7.800, p = 0.000$), PRIMS elliptical ($Z = -7.932, p = 0.000$), NHRC elliptical ($Z = -8.422, p = 0.000$), and 5-Km bike ($Z = -7.210, p = 0.000$). No significant category differences were found between the 1.5-mile run and the NHRC bike ($Z = -0.614, p = 0.539$) or the 2-Km rower ($Z = -0.907, p = 0.364$). These results indicate that the NHRC bike and the 2-Km rower are the best devices, among those tested, to minimize the category difference between an alternate device and the 1.5-mile run.

Comparisons of the NHRC Bike and 2-Km Rower

Because the NHRC bike and the 2-Km rower were the only alternate devices that did not have significant category differences from the 1.5-mile run, they were compared to determine if there was any difference in the categories the two devices produced. A Wilcoxon signed ranks test failed to find a significant difference in the mean categories achieved on the NHRC bike and Rower, ($Z = -1.716, p = 0.086$). Although no difference was found in the categories these devices produced, it is possible that one device

has more error in predicting the 1.5-mile run category than the other. To explore this, difference scores were computed for each participant for these devices based on how many category differences there were between their device and 1.5-mile run categories. A Wilcoxon signed ranks test found that the 2-Km Rower (m = 1.37) had a significantly higher difference score than the NHRC bike (m = 0.82) ($Z = -3.958, p = 0.000$) (Table 6).

	N	Mean	SD	Minimum	Maximum
NHRC Bike	114	0.8246	0.77854	0	3
2-Km Rower	110	1.3727	1.16414	0	5

Table 6: NHRC Bike and 2-Km Rower Mean Standard Deviation, Minimum, and Maximum.

Discussion

Current Navy Alternate Tests

Our results show that the PRIMS bike and PRIMS elliptical primarily under-predicted performance categories when compared to the 1.5-mile run. As a result, the run times computed from the regression equation in PRIMS were much slower than the actual 1.5-mile run times achieved in this study. Participants in this study would have attained a better performance category performing the 1.5-mile run test rather than testing on the stationary bike or elliptical trainer. These findings suggest that the current stationary bike and elliptical trainer performance categories are not equal to the 1.5-mile run. In order to ensure PRT standardization, the alternate aerobic tests should produce the same outcome (performance category) as the 1.5-mile run. If the alternate cardio tests do not produce the same performance category as the 1.5-mile run, then they should not be used interchangeably.

NHRC has developed an alternate scoring method based on Calories burned and Body Weight (Cal/BW). It was proposed that this revised method would: 1) be easier to compute, 2) not require the use of run prediction equations, and 3) use standalone norms (instead of a prediction equation) similar to the other PRT modalities. This change would significantly reduce the administrative burden on the respective command as well as the Physical Readiness Program Office. Our data showed that the proposed NHRC bike performance categories improved the matching categories to 39%. It produced the highest percentage of matching and one-category differences of all the devices tested. Our statistical analysis also demonstrated that the NHRC bike categories did not differ significantly from the categories achieved in the 1.5-mile run and had significantly lower category difference scores than the 2-Km rower (the only other device that had categories that did not differ from the run). However, in terms of the elliptical trainer, the NHRC elliptical actually produced fewer matching categories than did the PRIMS elliptical.

Additional Alternate Aerobic Tests

The 2-Km rower and 5-Km bike were also reviewed in this study. In a previous study, the 2-Km rower was recommended as an alternate aerobic fitness test for the Navy because of its relatively high correlation to VO₂max and the 1.5-mile run, thereby performing just as well as the stationary bike. Additionally, the 2-Km rower is readily available in most Navy facilities, and its cost is the lowest of all devices tested (Latour et al., 2017). Even though the 5-Km bike has a moderate correlation to VO₂max, it was not recommended for use as an alternate aerobic test because of its higher cost and more complicated testing procedures (Latour et al., 2017).

Using the performance categories created by Peterson (2015a), the 2-Km rower had a similar number of matching and one-category differences as the 5-Km bike and PRIMS bike, and because it was more balanced on under- and over-prediction, it was the only device besides the NHRC bike not to differ significantly from the 1.5-mile run categories. Further analyses showed that the 2-Km rower did have a higher average category difference than the NHRC bike. The 5-Km bike tested better than most of the other devices and maintained the second most matching categories. However, it primarily over-predicted performance categories, which means the performance category attained during the 5-Km bike produced better individual results than would have been achieved on the 1.5-mile run. Both the 2-Km rower and the 5-Km bike still have the potential to be adequate aerobic tests although our results indicate that the NHRC bike is the better option.

Limitations

The primary limitation that existed for this study was the lack of failures due to the testing population used. This was likely due to the different (stricter) PRT standards employed by USNA as compared to the Navy. As a result, none of the participants failed the 1.5-mile run. A few participants did fail some of the alternate aerobic devices, but those failures are believed to be a result of their unfamiliarity with the equipment. Although the participants were provided the opportunity to familiarize themselves with the equipment prior to testing, many failed to do so.

Conclusion

The authors conclude that the 1.5-mile run is the most accurate option for testing the aerobic fitness of Navy personnel. As a result, the 1.5-mile run should be the Navy's standard method of assessment and it should be mandatory for all service members to participate unless they are on a medical waiver. If the Navy desires the continued implementation of alternate aerobic capacity tests, this research recommends the use of the NHRC bike. Overall, the NHRC bike appears to be the best alternate scoring method because it had the most matching categories and one-category differences when compared to the 1.5-mile run. The 2-Km rower is another possible option for alternate aerobic testing, but future research

is needed in order to develop revised performance categories. Although the 5-Km bike performed well, it is not recommended due to its cost and complexity of testing procedures (Latour et al., 2017). Finally, neither the PRIMS elliptical nor NHRC elliptical are recommended as an alternate aerobic test due to their poor correlation to VO₂max and limited number of matching performance categories (Latour et al., 2017).

References

1. Buono MA (1988) Validity of the 500-yard swim and 5 kilometer stationary cycle ride as indicators of aerobic fitness. Naval Health Research Center. Report NO. 87-27.
2. Department of the Army (1998) Physical Fitness Training Field Manual 21-20.
3. Department of Defense (2004) Directive 1308.1.
4. Department of the Navy (2011). OPNAV Instruction 6110.1J.
5. George J, Vehrs, P, Allsen P, Fellingham, Fisher AG (1992) VO₂max estimation from a submaximal 1-mile track jog for fit college-age individuals. *Medicine and Science in Sports and Exercise* 25: 401-406.
6. Hodgdon J, Hervig L, Griswold L, Terry J, Le, C., Sausen, K., & Miller, P. (2006) 12-minute stationary cycle performance as a predictor of 1.5-mile run time. Naval Health Research Center.
7. Latour A, Peterson D, Rittenhouse M, Riner D (2017) Comparing alternate aerobic tests for U.S. Navy physical readiness test. *International Journal of Kinesiology in Higher Education*.
8. Marines.mil. (2016) Marine Corps bulletin 6100: Marine Corps physical fitness and combat fitness tests. Retrieved from.
9. Myers M (2015a, June 22) Expert: Navy fitness test needs work.
10. Myers M (2015b, November 1) New direction in sailor fitness: Job-specific PRT. *Navy Times*.
11. Naval Administrative Message 061/16. (2016) Implementation of physical readiness program policy changes update #2.
12. Naval Administrative Message 178/15. (2015) Physical Readiness Program Policy Changes.
13. Naval Administrative Message 293/06. (2006) Elliptical trainer as new physical readiness test (PRT) cardio option.
14. Parker S, Griswold L, Vickers R (2006) Development of an elliptical training physical fitness test. Technical Report 06-06. Naval Health Research Center.
15. Peterson DD (2015a) Modernizing the navy's physical readiness test: Introducing the navy general fitness test and navy operational fitness test. *The Sport Journal*.
16. Peterson D (2015b) The navy physical fitness test: A proposed revision to the navy physical readiness test. *Strength and Conditioning Journal* 37: 60-68.
17. Schilling B (2015, June 8) Do away with bike tests. *Navy Times*.
18. Weiglein L, Herrick J, Kirk S, Kirk E (2011) The 1-mile walk test is a valid predictor of VO₂max and is a reliable alternative fitness test to the 1.5-mile run in U.S. Air Force males. *Military Medicine* 176: 669-673.
19. Whitehead P, Schilling B, Peterson D, Weiss L (2012) possible new modalities for the navy physical readiness test. *Military Medicine* 177(11): 1417-1425.