

---

Men's and Women's Track & Field Programs

Track & Field

---

1-16-2009

## 2009 Cedarville Indoor Invitational

Cedarville University

Follow this and additional works at: [https://digitalcommons.cedarville.edu/track\\_field\\_programs](https://digitalcommons.cedarville.edu/track_field_programs)



Part of the [Higher Education Commons](#), [Sports Sciences Commons](#), and the [Sports Studies Commons](#)

---

### Recommended Citation

Cedarville University, "2009 Cedarville Indoor Invitational" (2009). *Men's and Women's Track & Field Programs*. 74.

[https://digitalcommons.cedarville.edu/track\\_field\\_programs/74](https://digitalcommons.cedarville.edu/track_field_programs/74)

This Program is brought to you for free and open access by DigitalCommons@Cedarville, a service of the Centennial Library. It has been accepted for inclusion in Men's and Women's Track & Field Programs by an authorized administrator of DigitalCommons@Cedarville. For more information, please contact [digitalcommons@cedarville.edu](mailto:digitalcommons@cedarville.edu).

*Cedarville University Track & Field*

# RACE DAY

Friday, January 16, 2009 • 4 p.m. • Doden Field House

2009  
CEDARVILLE  
INDOOR  
INVITATIONAL

\*\*\*\*\*

*presented by*  
**OHIO ARMY  
NATIONAL  
GUARD**

\*\*\*\*\*



- Cedarville University (OH)
- Central State University (OH)
- Cornerstone University (MI)
- Goshen College (IN)
- Lindsey Wilson College (KY)
- Notre Dame College (OH)
- University of Rio Grande (OH)
- Union College (KY)
- Wilmington College (OH)
- Wittenberg University (OH)
- Wright State University (OH)



OHIO

- Student Loan Repayment
- Federal Tuition Assistance

**SSG Aaron Weaver**  
**937-232-7712**

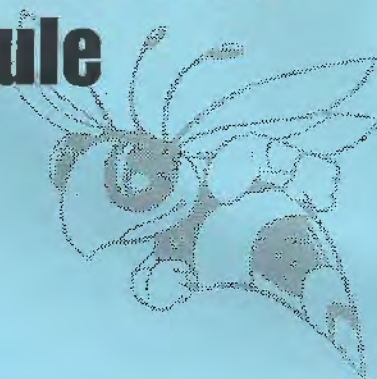


OHIO



# 2009 Cedarville Indoor Invitational

## Tentative Time Schedule



Field Events:

4:00 pm High Jump Men (scoreboard end) & Women (bleacher end)  
 4:00 pm Weight Throw, (Men then Women) then Shot Put (Men then Women)

(after HJ) Pole Vault -Women then Men  
 (after HJ) Long Jump-(scoreboard end) Men  
 (after HJ) Long Jump-(bleacher end) Women  
 Triple Jump (scoreboard end)-Women then Men (following LJ)

4:00 pm Running Events: Rolling schedule

55 H (semi) W  
 55 H (semi) M  
 55 Dash (semi) W  
 55 Dash (semi) M  
 55 H Final W  
 55 H Final M  
 55 Dash Final W  
 55 Dash Final M  
 4x800 Women  
 4x800 Men  
 5000 W  
 4x200 W  
 4x200 M  
 Mile W  
 Mile M  
 600 W  
 600 M  
 400 W  
 400M  
 800 W  
 800 M  
 200 W  
 200 M  
 5000 M  
 4x400 W  
 4x400 M  
 3K Race walk M &W (combined)



**The Super Source**  
 for *Everything Track & Field*

Our 46th Year of Serving the Track & Field  
 Needs of High Schools and Colleges

**M-F ATHLETIC COMPANY**  
 P.O. BOX 8090  
 Cranston, RI 02920  
**1-800-561-6723**



[www.mattfranz.com](http://www.mattfranz.com)  
 (937) 901-6915

*Dedicated to providing high quality  
 photographs of your event!*

# 2009 Cedarville Indoor Invitational High Jump / Pole Vault Progression



## High Jump

### Men

|      |      |
|------|------|
| 5-2  | 1.57 |
| 5-4  | 1.62 |
| 5-6  | 1.67 |
| 5-8  | 1.72 |
| 5-10 | 1.77 |
| 6-0  | 1.82 |
| 6-2  | 1.87 |
| 6-4  | 1.92 |
| 6-6  | 1.97 |
| 6-8  | 2.03 |
| 6-10 | 2.08 |
| 7-0  | 2.13 |

### Women

|      |      |
|------|------|
| 4-4  | 1.32 |
| 4-6  | 1.37 |
| 4-8  | 1.42 |
| 4-10 | 1.47 |
| 5-0  | 1.52 |
| 5-2  | 1.57 |
| 5-4  | 1.62 |
| 5-6  | 1.67 |
| 5-8  | 1.72 |

## Pole Vault

### Men

|       |      |
|-------|------|
| 9-0   | 2.75 |
| 10-0  | 3.05 |
| 10-6  | 3.20 |
| 11-0  | 3.35 |
| 11-6  | 3.50 |
| 12-0  | 3.65 |
| 12-6  | 3.80 |
| 13-0  | 3.95 |
| 13-6  | 4.10 |
| 14-0  | 4.25 |
| 14-6  | 4.40 |
| 14-11 | 4.55 |
| 15-5  | 4.70 |
| 15-11 | 4.85 |
| 16-5  | 5.00 |
| 16-10 | 5.15 |

### Women

|      |      |
|------|------|
| 7-0  | 2.15 |
| 8-0  | 2.45 |
| 8-6  | 2.60 |
| 9-0  | 2.75 |
| 9-6  | 2.90 |
| 10-0 | 3.05 |
| 10-6 | 3.20 |
| 11-0 | 3.35 |
| 11-6 | 3.50 |
| 12-0 | 3.65 |
| 12-6 | 3.80 |
| 13-0 | 3.95 |

**Boathouse.**  
SPORTS

**Pete Violette**

*Team Sales Consultant  
SW Ohio & Kentucky*

**(513) 831-1398 - office**  
**pviolette@boathouse.com**



**Der Dutchman**

*Restaurant & Bakery*

230 North US Rt. 42, Waynesville, Ohio

*Amish Kitchen Cooking*

Der Dutchman Restaurant is open Monday through  
Saturday, 7 am to 8 pm, closed Sunday.  
Phone: 513-897-4716



# Cedarville Indoor Invitational Meet Records

## Cedarville University, Cedarville, OH

### Meet Record - Records

|                             |          |           |  |
|-----------------------------|----------|-----------|--|
| 2 Men High Jump             | 6-07.00  | 1/26/2007 | Jimmy Sawin - Cedarville University                                |
| 4 Men Weight Throw          | 52-02.00 | 1/26/2007 | Aaron Ruter - SJC  |
| 6 Men Pole Vault            | 16-06.75 | 1/18/2008 | Jason Scott - Unattached   |
| 8 Men Long Jump             | 22-05.00 | 2/3/2006  | Jason Craig - Unattached   |
| 10 Men Triple Jump          | 44-07.50 | 2/3/2006  | Joel Smith - Cedarville University                                 |
| 12 Men Shot Put             | 51-02.25 | 1/18/2008 | Matt DeChant - Unatt. Ohio State                                   |
| 14 Men 4x800 Meter Relay    | 7:55.00  | 2/3/2006  | Dayton Men - U. Dayton   |
| 16 Men 55 Meter Hurdles     | 7.48     | 2/4/2005  | Derrick Williams - Central State Univ.                             |
| 18 Men 55 Meter Dash        | 6.32     | 1/26/2007 | Jason Craig - Unattached   |
| 21 Men 4x200 Meter Relay    | 1:30.49  | 1/18/2008 | Rio Grande - Rio Grande<br>B Baston, J Gravely, J Perry, J Kraner  |
| 23 Men 1 Mile Run           | 4:20.89  | 1/18/2008 | Keegan Rathkamp - Shawnee State Cl                                 |
| 25 Men 400 Meter Dash       | 49.57    | 2/3/2006  | Josh Perry - Rio Grande  |
| 27 Men 800 Meter Run        | 1:57.79  | 1/26/2007 | David Osborne - Kentucky State                                     |
| 29 Men 200 Meter Dash       | 22.45    | 1/18/2008 | Josh Perry - Rio Grande  |
| 30 Men 5000 Meter Run       | 15:00.00 | 2/4/2005  | Matt Boyles - Univ. of Rio Grande                                  |
| 32 Men 4x400 Meter Relay    | 3:30.23  | 1/18/2008 | Rio Grande - Rio Grande<br>R Cook, B Baston, C Woodfork, J Gravely |
| 34 Men 3000 Meter Race Walk | 11:47.90 | 1/26/2007 | Matt Boyles - Miami Valley TC                                      |

## Cedarville University, Cedarville, OH

### Meet Record - Records

|                               |          |           |   |
|-------------------------------|----------|-----------|---|
| 1 Women High Jump             | 5-10.00  | 1/26/2007 | Hyleas Fountain - Nike  |
| 3 Women Weight Throw          | 60-04.50 | 2/3/2006  | Candace Swann - Univ. of Charleston   |
| 5 Women Pole Vault            | 13-00.00 | 2/3/2006  | Sarah Landau - Miami University   |
| 7 Women Long Jump             | 18-08.00 | 2/3/2006  | LaShonda Davis - Miami University   |
| 9 Women Triple Jump           | 39-01.75 | 2/3/2006  | Sarah Ensslen - Cedarville University   |
| 11 Women Shot Put             | 44-09.00 | 2/3/2006  | Lindsey Arundel - Miami University  |
| 13 Women 4x800 Meter Relay    | 10:01.67 | 1/26/2007 | Morehead State University - Morehead<br>J Reyes, A Beck, A Hunley, K Reiland                  |
| 15 Women 55 Meter Hurdles     | 8.33     | 2/3/2006  | Alexis Lape - Miami University  |
| 17 Women 55 Meter Dash        | 7.05     | 2/3/2006  | LaShonda Davis - Miami University   |
| 19 Women 5000 Meter Run       | 17:13.84 | 1/26/2007 | Ann Alyanak - Unattached  |
| 20 Women 4x200 Meter Relay    | 1:44.19  | 2/3/2006  | central state university - Central State U.<br>S Stamper, A Aladefa, L Poindexter, A Campbell |
| 22 Women 1600 Meter Run       | 5:07.15  | 2/3/2006  | Jennie Stoll - Miami University   |
| 24 Women 400 Meter Dash       | 59.16    | 2/3/2006  | Betsy Allen - Miami University  |
| 26 Women 800 Meter Run        | 2:20.82  | 1/26/2007 | Lydia Wong - Cedarville University  |
| 28 Women 200 Meter Dash       | 25.23    | 2/3/2006  | Sune' Stamper - Central State U.  |
| 31 Women 4x400 Meter Relay    | 4:06.20  | 2/3/2006  | Miami University - Miami University<br>K Horning, B Allen, T Nye, A Tepe                      |
| 33 Women 3000 Meter Race Walk | 7:57.66  | 2/4/2005  | Tina Peters - Miami Valley TC   |



# Cedarville University

## Dodan Field House Records

### Cedarville University, Cedarville, OH

#### Fieldhouse - Records

|                             |          |           |  |
|-----------------------------|----------|-----------|--|
| 2 Men High Jump             | 6-07.00  | 1/26/2007 | Jimmy Sawin - Cedarville University                                |
| 4 Men Weight Throw          | 52-02.00 | 1/26/2007 | Aaron Ruter - SJC  |
| 6 Men Pole Vault            | 16-06.75 | 1/18/2008 | Jason Scott - Unattached   |
| 8 Men Long Jump             | 22-05.00 | 2/3/2006  | Jason Craig - Unattached   |
| 10 Men Triple Jump          | 44-07.50 | 2/3/2006  | Joel Smith - Cedarville University                                 |
| 12 Men Shot Put             | 51-02.25 | 1/18/2008 | Matt DeChant - Unatt. Ohio State                                   |
| 14 Men 4x800 Meter Relay    | 7:55.00  | 2/3/2006  | Dayton Men - U. Dayton   |
| 16 Men 55 Meter Hurdles     | 7.48     | 2/4/2005  | Derrick Williams - Central State Univ.                             |
| 18 Men 55 Meter Dash        | 6.42     | 1/18/2008 | Jason Craig - Olympia TC   |
| 21 Men 4x200 Meter Relay    | 1:30.49  | 1/18/2008 | Rio Grande - Rio Grande<br>B Baston, J Gravely, J Perry, J Kraner  |
| 23 Men 1 Mile Run           | 4:20.89  | 1/18/2008 | Keegan Rathkamp - Shawnee State Cl                                 |
| 25 Men 400 Meter Dash       | 49.57    | 2/3/2006  | Josh Perry - Univ. of Rio Grande                                   |
| 27 Men 800 Meter Run        | 1:57.79  | 1/26/2007 | David Osborne - Kentucky State                                     |
| 29 Men 200 Meter Dash       | 22.45    | 1/18/2008 | Josh Perry - Rio Grande  |
| 30 Men 5000 Meter Run       | 15:00.00 | 2/4/2005  | Matt Boyles - Univ. of Rio Grande                                  |
| 32 Men 4x400 Meter Relay    | 3:30.23  | 1/18/2008 | Rio Grande - Rio Grande<br>R Cook, B Baston, C Woodfork, J Gravely |
| 34 Men 3000 Meter Race Walk | 11:47.90 | 1/26/2007 | Matt Boyes - Miami Valley TC                                       |

### Cedarville University, Cedarville, OH

#### Fieldhouse - Records

|                               |          |           |  |
|-------------------------------|----------|-----------|--|
| 1 Women High Jump             | 5-10.00  | 1/26/2007 | Hyleas Fountain - Nike   |
| 3 Women Weight Throw          | 60-04.50 | 2/3/2006  | Candace Swann - Univ. of Charleston  |
| 5 Women Pole Vault            | 13-00.00 | 2/3/2006  | Sarah Landau - Miami University  |
| 7 Women Long Jump             | 18-08.00 | 2/3/2006  | LaShonda Davis - Miami University  |
| 9 Women Triple Jump           | 39-01.75 | 2/3/2006  | Sarah Ensslen - Cedarville University  |
| 11 Women Shot Put             | 44-09.00 | 2/3/2006  | Linsdey Arundel - Miami University   |
| 13 Women 4x800 Meter Relay    | 10:07.57 | 2/3/2006  | University of Dayton - U. Dayton   |
| 15 Women 55 Meter Hurdles     | 8.33     | 2/3/2006  | Alexis Lape - Miami University   |
| 17 Women 55 Meter Dash        | 7.05     | 2/3/2006  | LaShonda Davis - Miami University  |
| 19 Women 5000 Meter Run       | 17:13.84 | 1/26/2007 | Ann Alyanak - Unattached   |
| 20 Women 4x200 Meter Relay    | 1:44.19  | 2/3/2006  | central state university - Central State Univ.<br>S Stamper, A Aladefa, L Poindexter, A Campbell |
| 22 Women 1600 Meter Run       | 5:07.15  | 2/3/2006  | Jennie Stoll - Miami University  |
| 24 Women 400 Meter Dash       | 59.16    | 2/3/2006  | Betsy Allen - Miami University   |
| 26 Women 800 Meter Run        | 2:20.82  | 1/26/2007 | Lydia Wong - Cedarville University   |
| 28 Women 200 Meter Dash       | 25.23    | 2/3/2006  | Sune' Stamper - Central State U.   |
| 31 Women 4x400 Meter Relay    | 4:06.20  | 2/3/2006  | Miami University - Miami University<br>K Horning, B Allen, T Nye, A Tepe                         |
| 33 Women 3000 Meter Race Walk | 7:57.66  | 2/4/2005  | Tina Peters - Miami Valley TC  |



## Appendix B

### 2008-09 NAIA INDOOR TRACK AND FIELD STANDARDS

| Event                           | MEN     |  | Event # | WOMEN                                      |  |
|---------------------------------|---------|--|---------|--|--|
|                                 | Event # | "A" Standard / "B" Standard Reporting Mark |         | "A" Standard / "B" Standard Reporting Mark |  |
| <b>60 Meters Dash</b>           | 1       | 6.94 / 7.01                                | 22      | 7.84 / 7.95                                |  |
| 55 Meter / 60 Yard Dash         | 1A      | 6.46 / 6.53                                | 22A     | 7.31 / 7.42                                |  |
| 50 Meters Dash                  | 1B      | 5.84 / 5.91                                | 22B     | 6.74 / 6.85                                |  |
| <b>60 Meter Hurdles</b>         | 2       | 8.32 / 8.50                                | 23      | 9.20 / 9.52                                |  |
| 55 Meter / 60 Yard Hurdles      | 2A      | 7.79 / 7.97                                | 23A     | 8.63 / 8.95                                |  |
| 50 Meter Hurdles                | 2B      | 7.09 / 7.27                                | 23B     | 7.85 / 8.17                                |  |
| <b>200 Meter Dash</b>           | 3       | 22.25 / 22.55                              | 24      | 25.98 / 26.33                              |  |
| Undersize (<200m / 220yd) track | 3A      | 22.45 / 22.75                              | 24A     | 26.18 / 26.53                              |  |
| Oversize (>200m / 220yd) track  | 3B      | 21.65 / 21.95                              | 24B     | 25.38 / 25.73                              |  |
| 220 Yard Dash                   | 3C      | 22.47 / 22.78                              | 24C     | 26.51 / 26.87                              |  |
| Undersize (<200m / 220yd) track | 3D      | 22.68 / 22.98                              | 24D     | 26.71 / 27.07                              |  |
| Oversize (>200m / 220yd) track  | 3E      | 21.87 / 22.17                              | 24E     | 25.90 / 26.26                              |  |
| <b>400 Meter Run</b>            | 4       | 49.60 / 50.48                              | 25      | 58.80 / 60.30                              |  |
| Undersize (<200m / 220yd) track | 4A      | 49.90 / 50.78                              | 25A     | 59.10 / 60.60                              |  |
| Oversize (>200m / 220yd) track  | 4B      | 49.10 / 49.98                              | 25B     | 58.40 / 59.90                              |  |
| 440 Yard Run                    | 4C      | 50.61 / 51.51                              | 25C     | 60.00 / 61.53                              |  |
| Undersize (<200m / 220yd) track | 4D      | 50.92 / 51.82                              | 25D     | 60.31 / 61.84                              |  |
| Oversize (>200m / 220yd) track  | 4E      | 50.10 / 51.00                              | 25E     | 59.59 / 61.12                              |  |
| <b>600 Meter Run</b>            | 5       | 1:21.80 / 1:23.15                          | 26      | 1:38.80 / 1:40.10                          |  |
| Undersize (<200m / 220yd) track | 5A      | 1:22.15 / 1:23.50                          | 26A     | 1:39.15 / 1:40.45                          |  |
| Oversize (>200m / 220yd) track  | 5B      | 1:21.25 / 1:22.60                          | 26B     | 1:38.35 / 1:39.65                          |  |
| 600 Yard Run                    | 5C      | 1:13.04 / 1:14.24                          | 26C     | 1:29.82 / 1:31.0                           |  |
| Undersize (<200m / 220yd) track | 5D      | 1:13.35 / 1:14.55                          | 26D     | 1:30.14 / 1:31.32                          |  |
| Oversize (>200m / 220yd) track  | 5E      | 1:12.54 / 1:13.75                          | 26E     | 1:29.41 / 1:30.59                          |  |
| <b>800 Meter Run</b>            | 6       | 1:56.00 / 1:57.00                          | 27      | 2:19.00 / 2:21.50                          |  |
| Undersize (<200m / 220yd) track | 6A      | 1:56.40 / 1:57.40                          | 27A     | 2:19.40 / 2:21.90                          |  |
| Oversize (>200m / 220yd) track  | 6B      | 1:55.40 / 1:56.40                          | 27B     | 2:18.50 / 2:21.00                          |  |
| 880 Yard Run                    | 6C      | 1:56.94 / 1:57.94                          | 27C     | 2:20.12 / 2:22.64                          |  |
| Undersize (<200m / 220yd) track | 6D      | 1:57.34 / 1:58.35                          | 27D     | 2:20.52 / 2:23.04                          |  |
| Oversize (>200m / 220yd) track  | 6E      | 1:56.33 / 1:57.34                          | 27E     | 2:19.62 / 2:22.14                          |  |
| <b>1,000 Meter Run</b>          | 7       | 2:31.90 / 2:33.65                          | 28      | 3:03.50 / 3:07.00                          |  |
| Undersize (<200m / 220yd) track | 7A      | 2:32.35 / 2:34.10                          | 28A     | 3:03.95 / 3:07.45                          |  |
| Oversize (>200m / 220yd) track  | 7B      | 2:31.20 / 2:32.95                          | 28B     | 3:02.90 / 3:06.40                          |  |
| 1,000 Yard Run                  | 7C      | 2:18.09 / 2:19.68                          | 28C     | 2:46.82 / 2:50.00                          |  |
| Undersize (<200m / 220yd) track | 7D      | 2:18.50 / 2:20.09                          | 28D     | 2:47.23 / 2:50.41                          |  |
| Oversize (>200m / 220yd) track  | 7E      | 2:17.45 / 2:19.05                          | 28E     | 2:46.27 / 2:49.45                          |  |
| <b>Mile Run</b>                 | 8       | 4:20.60 / 4:23.06                          | 29      | 5:13.85 / 5:16.99                          |  |
| Undersize (<200m / 220yd) track | 8A      | 4:21.60 / 4:24.06                          | 29A     | 5:14.85 / 5:17.99                          |  |
| Oversize (>200m / 220yd) track  | 8B      | 4:18.80 / 4:21.26                          | 29B     | 5:12.25 / 5:15.39                          |  |
| 1,500 Meter Run                 | 8C      | 4:03.55 / 4:05.85                          | 29C     | 4:53.32 / 4:56.25                          |  |
| Undersize (<200m / 220yd) track | 8D      | 4:04.49 / 4:06.79                          | 29D     | 4:54.25 / 4:57.19                          |  |
| Oversize (>200m / 220yd) track  | 8E      | 4:01.87 / 4:04.17                          | 29E     | 4:51.82 / 4:54.76                          |  |



## 2008-09 NAIA INDOOR TRACK AND FIELD STANDARDS (Continued)

| Event                                  | Event #    | Men  |                                | Event #    | Women  |                                |
|--|------------|--|--------------------------------|------------|--|--------------------------------|
|  |            | "A" Standard                                 | "B" Standard<br>Reporting Mark |            | "A" Standard                                 | "B" Standard<br>Reporting Mark |
| <b>3,000 Meter Run</b>                 | <b>9</b>   | <b>8:43.00 / 8:50.40</b>                     |                                | <b>30</b>  | <b>10:30.50 / 10:42.50</b>                   |                                |
| Undersize (<200m / 220yd) track        | 9A         | 8:44.75 / 8:52.15                            |                                | 30A        | 10:32.25 / 10:44.25                          |                                |
| Oversize (>200m / 220yd) track         | 9B         | 8:40.80 / 8:48.20                            |                                | 30B        | 10:28.50 / 10:40.50                          |                                |
| <b>2 Mile Run</b>                      | <b>9C</b>  | <b>9:25.41 / 9:33.41</b>                     |                                | <b>30C</b> | <b>11:20.15 / 11:33.10</b>                   |                                |
| Undersize (<200m / 220yd) track        | 9D         | 9:27.30 / 9:35.30                            |                                | 30D        | 11:22.04 / 11:34.98                          |                                |
| Oversize (>200m / 220yd) track         | 9E         | 9:23.03 / 9:31.03                            |                                | 30E        | 11:17.99 / 11:30.94                          |                                |
| <b>5,000 Meter Run</b>                 | <b>10</b>  | <b>15:15.75 / 15:27.20</b>                   |                                | <b>31</b>  | <b>18:26.15 / 18:47.79</b>                   |                                |
| Undersize (<200m / 220yd) track        | 10A        | 15:18.25 / 15:29.70                          |                                | 31A        | 18:28.65 / 18:50.29                          |                                |
| Oversize (>200m / 220yd) track         | 10B        | 15:12.55 / 15:24.00                          |                                | 31B        | 18:23.45 / 18:45.09                          |                                |
| <b>3 Mile Run</b>                      | <b>10C</b> | <b>14:32.14 / 14:43.05</b>                   |                                | <b>31C</b> | <b>17:33.48 / 17:54.09</b>                   |                                |
| Undersize (<200m / 220yd) track        | 10D        | 14:34.52 / 14:45.43                          |                                | 31D        | 17:35.86 / 17:56.47                          |                                |
| Oversize (>200m / 220yd) track         | 10E        | 14:29.09 / 14:40.00                          |                                | 31E        | 17:30.90 / 17:51.51                          |                                |
| <b>3000 Meter Walk</b>                 | <b>11</b>  | <b>16:00.00 / 16:30.00</b>                   |                                | <b>32</b>  | <b>18:20.00 / 18:50.00</b>                   |                                |
| <b>4 x 400 Meter Relay</b>             | <b>12</b>  | <b>3:22.30 / 3:24.50</b>                     |                                | <b>33</b>  | <b>4:03.50 / 4:07.88</b>                     |                                |
| Undersize (<200m / 220yd) track        | 12A        | 3:23.80 / 3:26.00                            |                                | 33A        | 4:05.00 / 4:09.38                            |                                |
| Oversize (>200m / 220yd) track         | 12B        | 3:20.30 / 3:22.50                            |                                | 33B        | 4:01.90 / 4:06.28                            |                                |
| <b>4 x 440 Yard Relay</b>              | <b>12C</b> | <b>3:23.52 / 3:25.73</b>                     |                                | <b>33C</b> | <b>4:04.97 / 4:09.38</b>                     |                                |
| Undersize (<200m / 220yd) track        | 12D        | 3:25.03 / 3:27.24                            |                                | 33D        | 4:06.48 / 4:10.89                            |                                |
| Oversize (>200m / 220yd) track         | 12E        | 3:21.51 / 3:23.72                            |                                | 33E        | 4:03.36 / 4:07.77                            |                                |
| <b>4 x 800 Meter Relay</b>             | <b>13</b>  | <b>7:57.00 / 8:02.00</b>                     |                                | <b>34</b>  | <b>9:47.00 / 9:55.00</b>                     |                                |
| Undersize (<200m / 220yd) track        | 13A        | 7:58.60 / 8:03.60                            |                                | 34A        | 9:48.20 / 9:56.20                            |                                |
| Oversize (>200m / 220yd) track         | 13B        | 7:54.60 / 7:59.60                            |                                | 34B        | 9:45.40 / 9:53.40                            |                                |
| <b>4 x 880 Yard Relay</b>              | <b>13C</b> | <b>7:59.88 / 8:04.91</b>                     |                                | <b>34C</b> | <b>9:50.54 / 9:58.59</b>                     |                                |
| Undersize (<200m / 220yd) track        | 13D        | 8:01.49 / 8:06.52                            |                                | 34D        | 9:51.75 / 9:59.80                            |                                |
| Oversize (>200m / 220yd) track         | 13E        | 7:57.46 / 8:02.49                            |                                | 34E        | 9:48.93 / 9:56.98                            |                                |
| <b>Distance Medley Relay (Meters)</b>  | <b>14</b>  | <b>10:25.45 / 10:33.50</b>                   |                                | <b>35</b>  | <b>12:45.48 / 13:00.00</b>                   |                                |
| Undersize (<200m / 220yd) track        | 14A        | 10:26.55 / 10:34.60                          |                                | 35A        | 12:46.98 / 13:01.50                          |                                |
| Oversize (>200m / 220yd) track         | 14B        | 10:22.15 / 10:30.20                          |                                | 35B        | 12:42.88 / 12:57.40                          |                                |
| <b>Distance Medley Relay (Yards)</b>   | <b>14C</b> | <b>10:28.75 / 10:36.80</b>                   |                                | <b>35C</b> | <b>12:48.78 / 13:03.30</b>                   |                                |
| Undersize (<200m / 220yd) track        | 14D        | 10:29.85 / 10:37.90                          |                                | 35D        | 12:50.28 / 13:04.80                          |                                |
| Oversize (>200m / 220yd) track         | 14E        | 10:25.45 / 10:33.50                          |                                | 35E        | 12:46.18 / 13:00.70                          |                                |
| <b>Triple Jump</b>                     | <b>15</b>  | <b>14.17m (46'6") /<br/>13.88m (45'6.5")</b> |                                | <b>36</b>  | <b>11.20m (36'9") /<br/>10.97m (36'0")</b>   |                                |
| <b>Shot Put</b>                        | <b>16</b>  | <b>15.39m (50'6") /<br/>14.96m (49'1")</b>   |                                | <b>37</b>  | <b>12.70m (41'8") /<br/>12.42m (40'9")</b>   |                                |
| <b>Pole Vault</b>                      | <b>17</b>  | <b>4.70m (15'5.25") /<br/>4.57m (15'0")</b>  |                                | <b>38</b>  | <b>3.43m (11'3.25") /<br/>3.30m (10'10")</b> |                                |
| <b>Long Jump</b>                       | <b>18</b>  | <b>7.01m (23'0") /<br/>6.88m (22'7")</b>     |                                | <b>39</b>  | <b>5.46m (17'11") /<br/>5.31m (17'5.25")</b> |                                |
| <b>High Jump</b>                       | <b>19</b>  | <b>2.03m (6'8") /<br/>1.98m (6'6")</b>       |                                | <b>40</b>  | <b>1.65m (5'5") /<br/>1.62m (5'4")</b>       |                                |
| <b>Weight Throw</b>                    | <b>20</b>  | <b>16.00m (52'6") /<br/>15.54m (51'0")</b>   |                                | <b>41</b>  | <b>15.11m (49'7") /<br/>14.55m (47'9")</b>   |                                |
| <b>Heptathlon (M) / Pentathlon (W)</b> | <b>21</b>  | <b>Top 16</b>                                |                                | <b>42</b>  | <b>Top 16</b>                                |                                |

**Note:** The events that are listed in bold type will be run at the national championships. Athletes can also qualify for these events by meeting the standard in the compatible event(s) listed below each national championship event.

**Timing:** Report performances as recorded / timed in the competition. If hand timed, report as a hand time to the tenth of a second; if fully automatic timed, report as F.A.T. to the hundredth of a second. DO NOT CONVERT HAND TIMES TO F.A.T.; the statistics compiler will do this. **Hand times are not accepted in events 200 meters or less.**

**Race Walk:** Please refer to the race walk's portion of the Qualifying Procedures section in this manual regarding specific criteria for acceptable marks.

**Metric Conversions:** Field event standards are set in metric. Imperial distances must be the minimum needed to reach the metric mark.



## Cedarville Collegiate Indoor Invite 2009 - 1/6/2009 to 1/16/2009

Cedarville University, Cedarville, OH

## Meet Program

## Event 1 Women High Jump

Meet Record: 5-10 1/26/2007 Hyleas Fountain

Fieldhouse: 5-10 1/26/2007 Hyleas Fountain

| Pos | Name | Yr | School | Seed | Mark |
|-----|------|----|--------|------|------|
|-----|------|----|--------|------|------|

## Flight 1 of 1 Finals

|   |                   |    |                 |  |         |
|---|-------------------|----|-----------------|--|---------|
| 1 | Smith, Amanda     | FR | Cedarville      |  | 4-04.00 |
| 2 | Spradlin, Erica   | SO | Rio Grande      |  | 4-07.00 |
| 3 | Grenier, Sarah    | FR | Cedarville      |  | 4-10.00 |
| 4 | Cann, Carolyn     | FR | Cedarville      |  | 4-10.00 |
| 5 | Wuobio, Heather   | SO | Cedarville      |  | 4-11.00 |
| 6 | Capriotti, Lauren | FR | Wright State    |  | 1.50m   |
| 7 | Hauser, Lizzy     | FR | Wittenberg      |  | 5-00.00 |
| 8 | Fondriest, Lauren | JR | Wilmington (Oh) |  | 5-00.00 |
| 9 | Merritt, Courtnie | FR | Cedarville      |  | 5-02.00 |

## Event 2 Men High Jump

Meet Record: 6-07 1/26/2007 Jimmy Sawin

Fieldhouse: 6-07 1/26/2007 Jimmy Sawin

| Pos | Name | Yr | School | Seed | Mark |
|-----|------|----|--------|------|------|
|-----|------|----|--------|------|------|

## Flight 1 of 1 Finals

|    |                   |    |                 |    |         |
|----|-------------------|----|-----------------|----|---------|
| 1  | Morrison, Ricky   | FR | Wilmington (Oh) | NH |         |
| 2  | Wiemels, Josh     | FR | Wilmington (Oh) | NH |         |
| 3  | Hobbs, Nick       | FR | Cedarville      |    | 5-08.00 |
| 4  | Sawin, Jimmy      |    | Unattached      |    | 6-04.00 |
| 5  | Cotton, Bruce     | SR | Wilmington (Oh) |    | 6-04.00 |
| 6  | Heindl, Drew      | SO | Wilmington (Oh) |    | 6-04.00 |
| 7  | McMonigle, Braden | FR | Wilmington (Oh) |    | 6-04.00 |
| 8  | Brodwolf, Brandon | SO | Notre Dame (Oh) |    | 6-05.00 |
| 9  | Woods, Pat        |    | Unattached      |    | 6-08.00 |
| 10 | Smith, Joel       |    | Unattached      |    | 6-10.00 |

## Event 3 Women Weight Throw

Meet Record: 60-04.50 2/3/2006 Candace Swann

Fieldhouse: 60-04.50 2/3/2006 Candace Swann

| Pos | Name | Yr | School | Seed | Mark |
|-----|------|----|--------|------|------|
|-----|------|----|--------|------|------|

## Flight 1 of 1 Finals

|    |                   |    |                 |  |          |
|----|-------------------|----|-----------------|--|----------|
| 1  | Crutcher, Cory    | FR | Rio Grande      |  | ND       |
| 2  | McMullen, Allyssa | SO | Wilmington (Oh) |  | ND       |
| 3  | Sanders, Danielle | FR | Rio Grande      |  | 25-06.75 |
| 4  | Learnan, Tara     | JR | Cedarville      |  | 44-11.75 |
| 5  | Hannay, Sarah     | SO | Cedarville      |  | 38-10.25 |
| 6  | Meadows, Britney  | SO | Wilmington (Oh) |  | ND       |
| 7  | Brown, Tracie     | FR | Rio Grande      |  | 29-08.50 |
| 8  | Fansler, Nicole   | FR | Wright State    |  | 9.70m    |
| 9  | Robinson, Kara    | SR | Wilmington (Oh) |  | ND       |
| 10 | Ridder, Keelee    | SO | Wittenberg      |  | 10.07m   |

## Event 4 Men Weight Throw

Meet Record: 52-02 1/26/2007 Aaron Ruter

Fieldhouse: 52-02 1/26/2007 Aaron Ruter

| Pos | Name | Yr | School | Seed | Mark |
|-----|------|----|--------|------|------|
|-----|------|----|--------|------|------|

## Flight 1 of 2 Finals

|   |                 |    |            |  |          |
|---|-----------------|----|------------|--|----------|
| 1 | Kallas, Devin   | FR | Unattached |  | 15.00m   |
| 2 | Henning, Neil   |    | Unattached |  | 51-00.00 |
| 3 | Gehring, Billy  | FR | Unattached |  | 15.75m   |
| 4 | Collier, Jared  | FR | Unattached |  | 55-00.00 |
| 5 | davis, thomas   | FR | Unattached |  | 50-01.00 |
| 6 | Michaud, Ben    | SR | Cedarville |  | 45-00.00 |
| 7 | Maat, Christian | SR | Cedarville |  | 47-00.00 |

## Flight 2 of 2 Finals

|   |                 |    |                 |  |          |
|---|-----------------|----|-----------------|--|----------|
| 1 | Wehner, Chris   | FR | Wilmington (Oh) |  | 40-00.00 |
| 2 | Potter, CJ      | JR | Wilmington (Oh) |  | 44-00.00 |
| 3 | Reavis, Michael | FR | Wilmington (Oh) |  | ND       |
| 4 | Staley, Josh    | FR | Cedarville      |  | 34-00.00 |
| 5 | Guida, Matt     | JR | Wittenberg      |  | ND       |
| 6 | McElwee, Thomas | SO | Wittenberg      |  | 8.01m    |

## Event 5 Women Pole Vault

Meet Record: 13-00 2/3/2006 Sarah Landau

Fieldhouse: 13-00 2/3/2006 Sarah Landau

| Pos | Name | Yr | School | Seed | Mark |
|-----|------|----|--------|------|------|
|-----|------|----|--------|------|------|

## Flight 1 of 1 Finals

|   |                  |    |                 |    |          |
|---|------------------|----|-----------------|----|----------|
| 1 | Fisher, Jennifer | SO | Wilmington (Oh) | NH |          |
| 2 | Kirby, Laura     | FR | Cedarville      |    | 8-00.00  |
| 3 | Ryan, Kim        | JR | Wright State    |    | 2.75m    |
| 4 | Fey, Britney     | SO | Wilmington (Oh) |    | 10-00.00 |

## Event 6 Men Pole Vault

Meet Record: 16-06.75 1/18/2008 Jason Scott

Fieldhouse: 16-06.75 1/18/2008 Jason Scott

| Pos | Name | Yr | School | Seed | Mark |
|-----|------|----|--------|------|------|
|-----|------|----|--------|------|------|

## Flight 1 of 1 Finals

|    |                      |    |                 |  |          |
|----|----------------------|----|-----------------|--|----------|
| 1  | Barnes, Scotty       | JR | Union (Ky.)     |  | 2.75m    |
| 2  | Dicken, Joshua       | SO | Lindsey Wilson  |  | 3.10m    |
| 3  | Matheis, Jeff        | FR | Cedarville      |  | 12-00.00 |
| 4  | Van Winkle, Benjamin | JR | Unattached      |  | 12-06.00 |
| 5  | Risser, Dillon       | JR | Unattached      |  | 13-09.00 |
| 6  | Woods, Pat           |    | Unattached      |  | 14-00.00 |
| 7  | Stevens, Scott       | SR | Wilmington (Oh) |  | 14-00.00 |
| 8  | Ehrman, Jon          | SR | Unattached      |  | 14-00.00 |
| 9  | Dague, Allen         |    | Unattached      |  | 15-00.00 |
| 10 | Morgan, Graham       | SR | Unattached      |  | 15-06.00 |
| 11 | Burns, Kyle          | SR | Unattached      |  | 4.90m    |
| 12 | Scott, Jason         |    | Unattached      |  | 17-00.00 |



## Cedarville Collegiate Indoor Invite2009 - 1/6/2009 to 1/16/2009

Cedarville University, Cedarville, OH

## Meet Program

## Event 7 Women Long Jump

|                     |             |           |                                       |
|---------------------|-------------|-----------|---------------------------------------|
| <b>Meet Record:</b> | 18-08       | 2/3/2006  | LaShonda Davis                        |
| <b>Fieldhouse:</b>  | 18-08       | 2/3/2006  | LaShonda Davis                        |
| <b>Pos</b>          | <b>Name</b> | <b>Yr</b> | <b>School</b> <b>Seed</b> <b>Mark</b> |

## Flight 1 of 1 Finals

|   |                   |    |                 |          |
|---|-------------------|----|-----------------|----------|
| 1 | Trampler, Aubrey  | FR | Wright State    | 4.88m    |
| 2 | Patrick, Tiffany  | SO | Notre Dame (Oh) | 16-01.00 |
| 3 | Wimsatt, Kristina | JR | Lindsey Wilson  | 5.20m    |
| 4 | Kamann, Nicole    | JR | Wright State    | 4.44m    |
| 5 | Florence, Jessica | JR | Union (Ky.)     | 4.27m    |
| 6 | Parrish, Heather  | SR | Wright State    | 4.66m    |

## Event 8 Men Long Jump

|                     |             |           |                                       |
|---------------------|-------------|-----------|---------------------------------------|
| <b>Meet Record:</b> | 22-05       | 2/3/2006  | Jason Craig                           |
| <b>Fieldhouse:</b>  | 22-05       | 2/3/2006  | Jason Craig                           |
| <b>Pos</b>          | <b>Name</b> | <b>Yr</b> | <b>School</b> <b>Seed</b> <b>Mark</b> |

## Flight 1 of 2 Finals

|    |                   |    |                 |          |
|----|-------------------|----|-----------------|----------|
| 1  | McGuire, David    |    | Central State   | 21-06.00 |
| 2  | strong, rodney    |    | Unattached      | 7.42m    |
| 3  | Craig, Jason      |    | Olympia TC      | 23-00.00 |
| 4  | Leggett, DeMorrio | FR | Union (Ky.)     | 6.48m    |
| 5  | Brodwolf, Brandon | SO | Notre Dame (Oh) | 20-06.00 |
| 6  | Woods, Pat        |    | Unattached      | 21-00.00 |
| 7  | Bargo, Seth       | FR | Union (Ky.)     | 6.35m    |
| 8  | Holeman, Corey    |    | Unattached      | 23-00.00 |
| 9  | Williams, Mark    | SO | Cedarville      | 21-05.25 |
| 10 | Postell, Laurence |    | Unattached      | 22-00.00 |

## Flight 2 of 2 Finals

|    |                       |    |                 |          |
|----|-----------------------|----|-----------------|----------|
| 1  | Wiemels, Josh         | FR | Wilmington (Oh) | ND       |
| 2  | Smith, Travis         | SR | Cedarville      | 20-01.75 |
| 3  | Cotton, Bruce         | SR | Wilmington (Oh) | 20-06.00 |
| 4  | Heindl, Drew          | SO | Wilmington (Oh) | ND       |
| 5  | Morrison, Ricky       | FR | Wilmington (Oh) | ND       |
| 6  | Page, Paul            | FR | Cedarville      | 18-08.00 |
| 7  | Davis-Jackson, Tyquan |    | Central State   | ND       |
| 8  | Barnes, Scotty        | JR | Union (Ky.)     | 6.20m    |
| 9  | Gruenberg, Stephen    |    | Drake County Tr | 19-00.00 |
| 10 | Green, Michael        | FR | Rio Grande      | 20-01.00 |

## Event 9 Women Triple Jump

|                     |             |           |                                       |
|---------------------|-------------|-----------|---------------------------------------|
| <b>Meet Record:</b> | 39-01.75    | 2/3/2006  | Sarah Ensslen                         |
| <b>Fieldhouse:</b>  | 39-01.75    | 2/3/2006  | Sarah Ensslen                         |
| <b>Pos</b>          | <b>Name</b> | <b>Yr</b> | <b>School</b> <b>Seed</b> <b>Mark</b> |

## Flight 1 of 1 Finals

|   |                  |    |              |    |
|---|------------------|----|--------------|----|
| 1 | Kamann, Nicole   | JR | Wright State | ND |
| 2 | Parrish, Heather | SR | Wright State | ND |

## Event 10 Men Triple Jump

|                     |             |           |                                       |
|---------------------|-------------|-----------|---------------------------------------|
| <b>Meet Record:</b> | 44-07.50    | 2/3/2006  | Joel Smith                            |
| <b>Fieldhouse:</b>  | 44-07.50    | 2/3/2006  | Joel Smith                            |
| <b>Pos</b>          | <b>Name</b> | <b>Yr</b> | <b>School</b> <b>Seed</b> <b>Mark</b> |

## Flight 1 of 1 Finals

|   |                   |    |                 |          |
|---|-------------------|----|-----------------|----------|
| 1 | Page, Paul        | FR | Cedarville      | 38-01.00 |
| 2 | Leggett, DeMorrio | FR | Union (Ky.)     | 13.65m   |
| 3 | Smith, Travis     | SR | Cedarville      | 41-08.75 |
| 4 | Wiemels, Josh     | FR | Wilmington (Oh) | ND       |
| 5 | Bargo, Seth       | FR | Union (Ky.)     | 12.50m   |
| 6 | Cotton, Bruce     | SR | Wilmington (Oh) | ND       |
| 7 | Heindl, Drew      | SO | Wilmington (Oh) | ND       |

## Event 11 Women Shot Put

|                     |             |           |                                       |
|---------------------|-------------|-----------|---------------------------------------|
| <b>Meet Record:</b> | 44-09       | 2/3/2006  | Linsdey Arundel                       |
| <b>Fieldhouse:</b>  | 44-09       | 2/3/2006  | Linsdey Arundel                       |
| <b>Pos</b>          | <b>Name</b> | <b>Yr</b> | <b>School</b> <b>Seed</b> <b>Mark</b> |

## Flight 1 of 2 Finals

|   |                  |    |                 |          |
|---|------------------|----|-----------------|----------|
| 1 | Ridder, Keelee   | SO | Wittenberg      | 30-01.00 |
| 2 | Hannay, Sarah    | SO | Cedarville      | 35-08.50 |
| 3 | Patrick, Tiffany | SO | Notre Dame (Oh) | 35-00.00 |
| 4 | Sipe, Jessica    | JR | Cedarville      | 36-08.25 |
| 5 | Lcaman, Tara     | JR | Cedarville      | 36-04.25 |
| 6 | Fansler, Nicole  | FR | Wright State    | 10.60m   |
| 7 | Sanders, Daniell | FR | Rio Grande      | 26-01.50 |
| 8 | Brown, Tracie    | FR | Rio Grande      | 36-02.00 |

## Flight 2 of 2 Finals

|   |                   |    |                 |       |
|---|-------------------|----|-----------------|-------|
| 1 | Meadows, Britney  | SO | Wilmington (Oh) | ND    |
| 2 | McMullen, Allyssa | SO | Wilmington (Oh) | ND    |
| 3 | Robinson, Kara    | SR | Wilmington (Oh) | ND    |
| 4 | Detty, Tory       | JR | Wright State    | 6.87m |
| 5 | Puryear, Brittany | JR | Union (Ky.)     | 5.09m |
| 6 | Fairbanks, Tiara  |    | Central State   | ND    |
| 7 | Crutcher, Cory    | FR | Rio Grande      | ND    |

## Event 12 Men Shot Put

|                     |             |           |                                       |
|---------------------|-------------|-----------|---------------------------------------|
| <b>Meet Record:</b> | 51-02.25    | 1/18/2008 | Matt DeChant                          |
| <b>Fieldhouse:</b>  | 51-02.25    | 1/18/2008 | Matt DeChant                          |
| <b>Pos</b>          | <b>Name</b> | <b>Yr</b> | <b>School</b> <b>Seed</b> <b>Mark</b> |

## Flight 1 of 1 Finals

|    |                 |    |                 |          |
|----|-----------------|----|-----------------|----------|
| 1  | Barnes, Scotty  | JR | Union (Ky.)     | 11.50m   |
| 2  | Radel, Nic      | SO | Wittenberg      | ND       |
| 3  | Potter, CJ      | JR | Wilmington (Oh) | 36-07.00 |
| 4  | Reavis, Michael | FR | Wilmington (Oh) | ND       |
| 5  | McElwee, Thomas | SO | Wittenberg      | 9.20m    |
| 6  | Michaud, Ben    | SR | Cedarville      | 49-00.00 |
| 7  | Wehner, Chris   | FR | Wilmington (Oh) | 45-00.00 |
| 8  | Guida, Matt     | JR | Wittenberg      | ND       |
| 9  | Woods, Pat      |    | Unattached      | 48-06.00 |
| 10 | Kallas, Devin   | FR | Unattached      | 15.00m   |
| 11 | Staley, Josh    | FR | Cedarville      | 36-00.00 |
| 12 | Collier, Jared  | FR | Unattached      | 50-00.00 |



## Cedarville Collegiate Indoor Invite 2009 - 1/6/2009 to 1/16/2009

Cedarville University, Cedarville, OH

## Meet Program

**Event 13 Women 4x800 Meter Relay**

**Meet Record:** 10:01.67 1/26/2007 Morehead State University  
**J Reyes, A Beck, A Hunley, K Reiland**

**Fieldhouse:** 10:07.57 2/3/2006 University of Dayton

| Lane | Team | Relay | Seed Time |
|------|------|-------|-----------|
|------|------|-------|-----------|

**Section 1 of 1 Finals**

|   |                   |   |          |
|---|-------------------|---|----------|
| 1 | Wright State      | A | 10:20.00 |
| 2 | Wilmington (Ohio) | A | NT       |
| 3 | Rio Grande        | A | NT       |

**Event 14 Men 4x800 Meter Relay**

**Meet Record:** 7:55.00 2/3/2006 Dayton Men

**Fieldhouse:** 7:55.00 2/3/2006 Dayton Men

| Lane | Team | Relay | Seed Time |
|------|------|-------|-----------|
|------|------|-------|-----------|

**Section 1 of 1 Finals**

|   |                   |   |         |
|---|-------------------|---|---------|
| 1 | Rio Grande        | A | 8:38.83 |
| 2 | Wilmington (Ohio) | A | 8:25.00 |

**Event 15 Women 55 Meter Hurdles****Top 8 Advance by Time**

**Meet Record:** 8.33 2/3/2006 Alexis Lape

**Fieldhouse:** 8.33 2/3/2006 Alexis Lape

| Lane | Name | Yr | School | Seed Time |
|------|------|----|--------|-----------|
|------|------|----|--------|-----------|

**Heat 1 of 1 Prelims**

|   |                  |    |                 |      |
|---|------------------|----|-----------------|------|
| 1 | Gruett, Chelsea  | FR | Cedarville      | 9.00 |
| 2 | Patrick, Tiffany | SO | Notre Dame (Oh) | 9.70 |
| 3 | lloyd, Cassandra | FR | Wright State    | 8.50 |
| 4 | Folino, Emily    | FR | Wright State    | 9.80 |
| 5 | Fey, Brittney    | SO | Wilmington (Oh) | 9.50 |
| 6 | Watkins, Kelsey  | FR | Cedarville      | 9.20 |
| 7 | Leaman, Tara     | JR | Cedarville      | 9.16 |
| 8 | Lanphier, Katie  | FR | Cedarville      | 9.90 |

**Event 16 Men 55 Meter Hurdles****Top 8 Advance by Time**

**Meet Record:** 7.48 2/4/2005 Derrick Williams

**Fieldhouse:** 7.48 2/4/2005 Derrick Williams

| Lane | Name | Yr | School | Seed Time |
|------|------|----|--------|-----------|
|------|------|----|--------|-----------|

**Heat 1 of 2 Prelims**

|   |                   |    |                 |      |
|---|-------------------|----|-----------------|------|
| 1 | Barnes, Scotty    | JR | Union (Ky.)     | 8.56 |
| 2 | Clark, Jacob      | FR | Wilmington (Oh) | NT   |
| 3 | Richardson, Josh  | SO | Wilmington (Oh) | 8.50 |
| 4 | Tress, Brandon    | JR | Cedarville      | 7.70 |
| 5 | Brodwolf, Brandon | SO | Notre Dame (Oh) | 8.70 |

**Heat 2 of 2 Prelims**

|   |                   |    |                |      |
|---|-------------------|----|----------------|------|
| 2 | Hoffman, Justin   | FR | Cedarville     | 7.70 |
| 3 | Scott, Jason      |    | Unattached     | 7.69 |
| 4 | McDuffen, Michael | FR | Lindsey Wilson | 8.65 |
| 5 | Holeman, Corey    |    | Unattached     | 7.43 |
| 6 | Hagans, Edwin     |    | Unattached     | 8.25 |

**Event 17 Women 55 Meter Dash****Top 8 Advance by Time**

**Meet Record:** 7.05 2/3/2006 LaShonda Davis

**Fieldhouse:** 7.05 2/3/2006 LaShonda Davis

| Lane | Name | Yr | School | Seed Time |
|------|------|----|--------|-----------|
|------|------|----|--------|-----------|

**Heat 1 of 3 Prelims**

|   |                    |    |                 |      |
|---|--------------------|----|-----------------|------|
| 1 | Creary, Tiffany    |    | Central State   | NT   |
| 2 | Walker, Rachel     | SO | Rio Grande      | NT   |
| 3 | Dierauer, Isabelle |    | Miami Valley TC | 8.40 |
| 4 | Williams, Mahogany |    | Central State   | NT   |
| 5 | Wimsatt, Kristina  | JR | Lindsey Wilson  | 7.85 |
| 6 | Florence, Jessica  | JR | Union (Ky.)     | 8.62 |

**Heat 2 of 3 Prelims**

|   |                  |    |                 |      |
|---|------------------|----|-----------------|------|
| 1 | Kamann, Nicole   | JR | Wright State    | 7.98 |
| 2 | Gandy, Tim'Aira  | FR | Wittenberg      | NT   |
| 3 | Detty, Tory      | JR | Wright State    | 8.41 |
| 4 | Martin, Callen   | JR | Wilmington (Oh) | 7.30 |
| 5 | lloyd, Cassandra | FR | Wright State    | 7.55 |

**Heat 3 of 3 Prelims**

|   |                  |    |              |      |
|---|------------------|----|--------------|------|
| 3 | Domiano, Kari    | FR | Wittenberg   | NT   |
| 4 | Winik, Alexa     | FR | Cedarville   | 7.50 |
| 5 | Corbin, Kristin  | FR | Cedarville   | 7.90 |
| 6 | Brigham, Tiffany | JR | Wright State | 7.45 |
| 7 | Parrish, Heather | SR | Wright State | 8.20 |
| 8 | Trampler, Aubrey | FR | Wright State | 8.20 |

**Event 18 Men 55 Meter Dash****Top 8 Advance by Time**

**Meet Record:** 6.32 1/26/2007 Jason Craig

**Fieldhouse:** 6.42 1/18/2008 Jason Craig

| Lane | Name | Yr | School | Seed Time |
|------|------|----|--------|-----------|
|------|------|----|--------|-----------|

**Heat 1 of 5 Prelims**

|   |                    |    |                 |      |
|---|--------------------|----|-----------------|------|
| 1 | Postell, Laureuce  |    | Unattached      | 6.90 |
| 2 | Kittle, Douglas    | FR | Cedarville      | 7.10 |
| 3 | Burns, Kyle        | SR | Unattached      | 6.90 |
| 4 | Page, Paul         | FR | Cedarville      | 6.70 |
| 5 | Molstre, Jordan    | SO | Cedarville      | 7.15 |
| 6 | Curtis, Stephen    |    | Unattached      | 6.70 |
| 7 | Gruenberg, Stephen |    | Drake County TC | 6.80 |

**Heat 2 of 5 Prelims**

|   |                   |    |                 |      |
|---|-------------------|----|-----------------|------|
| 1 | Woods, Pat        |    | Unattached      | NT   |
| 2 | Brooks, Courtney  |    | Central State   | NT   |
| 3 | Duff, Ian         |    | Central State   | 6.55 |
| 4 | Gibson, Sean      |    | Central State   | NT   |
| 5 | Francisco, Justin | SO | Rio Grande      | NT   |
| 6 | Clark, Jacob      | FR | Wilmington (Oh) | NT   |
| 7 | Thornton, Andre   | JR | Union (Ky.)     | 6.51 |



## Cedarville Collegiate Indoor Invite 2009 - 1/6/2009 to 1/16/2009

Cedarville University, Cedarville, OH

## Meet Program

**Heat 3 of 5 Prelims...(Event 18 Men 55 Meter Dash)**

|   |                    |    |                |      |
|---|--------------------|----|----------------|------|
| 1 | Green, Michael     | FR | Rio Grande     | 6.93 |
| 2 | Bargo, Seth        | FR | Union (Ky.)    | 6.88 |
| 3 | Cecil, Christopher | SR | Lindsey Wilson | 6.91 |
| 4 | Barnes, Johnny     | JR | Union (Ky.)    | 6.78 |
| 5 | Holeman, Corey     |    | Unattached     | 6.60 |
| 6 | Taylor, Earl       |    | Central State  | NT   |
| 7 | Leggett, DeMorrio  | FR | Union (Ky.)    | 6.66 |

**Heat 4 of 5 Prelims**

|   |                  |    |               |      |
|---|------------------|----|---------------|------|
| 1 | Weddell, Cody    | FR | Wittenberg    | NT   |
| 2 | Craig, Jason     |    | Olympia TC    | 6.39 |
| 3 | Lamarre, Manoach | SR | Wittenberg    | 7.12 |
| 4 | Scott, Jason     |    | Unattached    | 6.60 |
| 5 | McGuire, David   |    | Central State | NT   |
| 6 | Benjamin, Marcus | SO | Cedarville    | 6.60 |
| 7 | Nabors, Johnnie  | SR | Union (Ky.)   | 6.42 |

**Heat 5 of 5 Prelims**

|   |                    |    |                 |      |
|---|--------------------|----|-----------------|------|
| 1 | Jones, Larry       |    | Central State   | 6.55 |
| 2 | Smith, Travis      | SR | Cedarville      | 6.60 |
| 3 | Smith, Marekus     | JR | Union (Ky.)     | 6.61 |
| 4 | Davenport, Freddie | FR | Wilmington (Oh) | 6.80 |
| 5 | Morrison, Ricky    | FR | Wilmington (Oh) | NT   |
| 6 | Benson, Tyler      | FR | Wilmington (Oh) | 6.90 |
| 7 | Clark, Marcus      |    | Central State   | 6.61 |

**Event 19 Women 5000 Meter Run**

Meet Record: 17:13.84 1/26/2007 Ann Alyanak

Fieldhouse: 17:13.84 1/26/2007 Ann Alyanak

**Lane Name Yr School Seed Time****Section 1 of 1 Finals**

|   |                  |    |                 |          |
|---|------------------|----|-----------------|----------|
| 1 | Maiyo, Monicah   | JR | Lindsey Wilson  | 20:35.00 |
| 2 | Porter, Amanda   |    | Shawnee State C | 19:30.00 |
| 3 | Goodwin, Kristen | FR | Wright State    | 19:40.00 |
| 4 | Hopwood, Natalic | SO | Wright State    | 19:20.00 |
| 5 | LiPira, Brittney |    | Shawnee State C | 20:10.00 |
| 6 | Cheruyot, Nelly  | FR | Wright State    | 20:20.00 |

**Event 20 Women 4x200 Meter Relay**

Meet Record: 1:44.19 2/3/2006 central state university

S Stamper, A Aladefa, L Poindexter, A Campbell

Fieldhouse: 1:44.19 2/3/2006 central state university

S Stamper, A Aladefa, L Poindexter, A Campbell

**Lane Team Relay Seed Time****Section 1 of 1 Finals**

|   |              |   |         |
|---|--------------|---|---------|
| 3 | Wright State | A | 1:47.70 |
| 4 | Wittenberg   | A | 1:52.80 |
| 5 | Rio Grande   | A | 2:00.46 |
| 6 | Wright State | B | 1:55.00 |

**Event 21 Men 4x200 Meter Relay**

Meet Record: 1:30.49 1/18/2008 Rio Grande

B Baston, J Gravely, J Perry, J Kraner

Fieldhouse: 1:30.49 1/18/2008 Rio Grande

B Baston, J Gravely, J Perry, J Kraner

**Lane Team Relay Seed Time****Section 1 of 1 Finals**

|   |                   |   |         |
|---|-------------------|---|---------|
| 3 | Central State     | A | 1:30.20 |
| 4 | Wittenberg        | A | 1:32.20 |
| 5 | Central State     | B | 1:33.50 |
| 6 | Wilmington (Ohio) | A | 1:34.50 |

**Event 22 Women 1 Mile Run**

Meet Record: 5:07.15 2/3/2006 Jennie Stoll

Fieldhouse: 5:07.15 2/3/2006 Jennie Stoll

**Lane Name Yr School Seed Time****Section 1 of 2 Finals**

|   |                     |    |                 |         |
|---|---------------------|----|-----------------|---------|
| 1 | Santos, Mile        |    | Unattached      | 5:25.00 |
| 2 | Walker, Bianca      | FR | Wright State    | 5:30.00 |
| 3 | Armstrong, Sara     |    | Shawnee State C | 5:35.00 |
| 4 | Simpson, Brittany   | SR | Cedarville      | 5:15.00 |
| 5 | Hollander, Jennifer | FR | Cedarville      | 5:45.00 |
| 6 | Glenn, Alyssa       | SO | Wright State    | 5:35.00 |
| 7 | Niersel, Cassie     | SR | Lindsey Wilson  | 5:40.00 |
| 8 | Burton, Amanda      |    | Shawnee State C | 5:45.00 |
| 9 | Pyles, Elisabeth    | SR | Cedarville      | 5:15.00 |

**Section 2 of 2 Finals**

|    |                    |    |                 |         |
|----|--------------------|----|-----------------|---------|
| 1  | Shoemaker, Katie   | SR | Wittenberg      | NT      |
| 2  | Milbower, Katie    | FR | Wilmington (Oh) | NT      |
| 3  | Olnhausen, Jessika | FR | Wright State    | 5:50.00 |
| 4  | Smith, Jessica     | FR | Cedarville      | 5:55.00 |
| 5  | Newcomer, Tracy    | SO | Rio Grande      | 5:56.00 |
| 6  | Herbert, Ashley    | FR | Cedarville      | 6:00.00 |
| 7  | Stevens, Sarah     | FR | Cedarville      | 5:50.00 |
| 8  | Bunn, Lillian      | SO | Wilmington (Oh) | NT      |
| 9  | DeRusha, Emily     | SO | Cedarville      | 5:46.95 |
| 10 | Wolfe, Hannah      | SO | Wilmington (Oh) | NT      |



## Cedarville Collegiate Indoor Invite 2009 - 1/6/2009 to 1/16/2009

Cedarville University, Cedarville, OH

## Meet Program

## Event 23 Men 1 Mile Run

Meet Record: 4:20.89 1/18/2008 Keegan Rathkamp

Fieldhouse: 4:20.89 1/18/2008 Keegan Rathkamp

| Lane Name | Yr | School | Seed Time |
|-----------|----|--------|-----------|
|-----------|----|--------|-----------|

## Section 1 of 1 Finals

|    |                      |                    |         |
|----|----------------------|--------------------|---------|
| 1  | Culbertson, Corey    | Shawnee State C    | 4:30.00 |
| 2  | Kual, Daniel         | JR Union (Ky.)     | 4:33.00 |
| 3  | Bozue, Josh          | Unattached         | 4:32.00 |
| 4  | Schuschu, Aaron      | FR Wilmington (Oh) | NT      |
| 5  | Gerlach, Eli         | Shawnee State C    | 4:55.00 |
| 6  | Brooker, Jud         | SR Cedarville      | 4:25.00 |
| 7  | Moore, Alex          | SO Cedarville      | 4:42.00 |
| 8  | Whittington, Charles | FR Rio Grande      | 4:48.27 |
| 9  | Warren, David        | SR Wilmington (Oh) | NT      |
| 10 | McCarty, Chad        | FR Rio Grande      | 4:37.50 |
| 11 | Anderson, John       | FR Lindsey Wilson  | 4:42.00 |
| 12 | Davies, Jordan       | SO Cedarville      | 4:27.00 |
| 13 | Hornick, Justin      | Shawnee State C    | 4:45.00 |
| 14 | Romeo, Rob           | SO Wilmington (Oh) | NT      |

## Event 24 Women 400 Meter Dash

Meet Record: 59.16 2/3/2006 Betsy Allen

Fieldhouse: 59.16 2/3/2006 Betsy Allen

| Lane Name | Yr | School | Seed Time |
|-----------|----|--------|-----------|
|-----------|----|--------|-----------|

## Section 1 of 2 Finals

|   |                    |                   |       |
|---|--------------------|-------------------|-------|
| 1 | Cromer, Elaina     | Unattached        | 56.10 |
| 2 | Garrett, Christina | SO Rio Grande     | 65.48 |
| 3 | Furrow, Danielle   | JR Wright State   | 66.00 |
| 4 | Grenier, Sarah     | FR Cedarville     | 63.10 |
| 5 | Dorsey, Antoinette | FR Lindsey Wilson | 66.00 |
| 6 | Yaeger, Emily      | FR Union (Ky.)    | 64.32 |

## Section 2 of 2 Finals

|   |                     |                 |       |
|---|---------------------|-----------------|-------|
| 1 | Kuerbitz, Catherine | FR Wittenberg   | NT    |
| 2 | McKione, Anitra     | Central State   | NT    |
| 3 | Kirby, Meredith     | FR Wittenberg   | NT    |
| 4 | Baker, Kristie      | Central State   | NT    |
| 5 | Folino, Emily       | FR Wright State | 67.00 |

## Event 25 Men 400 Meter Dash

Meet Record: 49.57 2/3/2006 Josh Perry

Fieldhouse: 49.57 2/3/2006 Josh Perry

| Lane Name | Yr | School | Seed Time |
|-----------|----|--------|-----------|
|-----------|----|--------|-----------|

## Section 1 of 3 Finals

|   |                    |                   |       |
|---|--------------------|-------------------|-------|
| 1 | Thornton, Andre    | JR Union (Ky.)    | 49.56 |
| 2 | Mulazim, Khalid    | Unattached        | 51.50 |
| 3 | Cecil, Christopher | SR Lindsey Wilson | 49.35 |
| 4 | McMullen, Nigel    | FR Unattached     | 49.90 |
| 5 | Mulazim, Khalid    | BM Track Club     | 51.50 |
| 6 | Tress, Brandon     | JR Cedarville     | 51.57 |

## Section 2 of 3 Finals

|   |                   |                    |       |
|---|-------------------|--------------------|-------|
| 1 | Beight, Michael   | JR Cedarville      | 51.90 |
| 2 | Howard, Mitch     | SO Wilmington (Oh) | 53.90 |
| 3 | Brodwolf, Brandon | SO Notre Dame (Oh) | 53.20 |
| 4 | Wells, Tyson      | FR Cedarville      | 52.90 |
| 5 | Starr, Samuel     | JR Cedarville      | 51.90 |
| 6 | Nabors, Johnnie   | SR Union (Ky.)     | 51.80 |

## Section 3 of 3 Finals

|   |                   |                    |       |
|---|-------------------|--------------------|-------|
| 2 | Weddell, Cody     | FR Wittenberg      | NT    |
| 3 | Mansaray, Mohamed | FR Wittenberg      | NT    |
| 4 | Thinnes, Jimmy    | SR Wittenberg      | NT    |
| 5 | Orth, Bret        | SO Wilmington (Oh) | 53.90 |

## Event 26 Women 800 Meter Run

Meet Record: 2:20.82 1/26/2007 Lydia Wong

Fieldhouse: 2:20.82 1/26/2007 Lydia Wong

| Lane Name | Yr | School | Seed Time |
|-----------|----|--------|-----------|
|-----------|----|--------|-----------|

## Section 1 of 2 Finals

|   |                   |                   |         |
|---|-------------------|-------------------|---------|
| 1 | Maykut, Jenny     | SO Wright State   | 2:28.00 |
| 2 | Mattingly, Alicia | FR Lindsey Wilson | 2:36.00 |
| 3 | Diltz, Ashley     | FR Wright State   | 2:30.00 |
| 4 | Armstrong, Sara   | Shawnee State C   | 2:35.00 |
| 5 | Arnett, Stacey    | JR Rio Grande     | 2:38.62 |
| 6 | Wong, Lydia       | JR Cedarville     | 2:17.00 |
| 7 | Cann, Carolyn     | FR Cedarville     | 2:24.00 |

## Section 2 of 2 Finals

|   |                    |                    |         |
|---|--------------------|--------------------|---------|
| 1 | Stults, Lucy       | FR Wilmington (Oh) | 2:39.90 |
| 2 | Bunn, Lillian      | SO Wilmington (Oh) | NT      |
| 3 | Milbower, Katie    | FR Wilmington (Oh) | NT      |
| 4 | Wolfe, Hannah      | SO Wilmington (Oh) | NT      |
| 5 | Olnhausen, Jessika | FR Wright State    | 2:40.00 |
| 6 | Burton, Amanda     | Shawnee State C    | 2:40.00 |
| 7 | Stief, Kelsey      | SO Wilmington (Oh) | 2:39.90 |

## Event 27 Men 800 Meter Run

Meet Record: 1:57.79 1/26/2007 David Osborne

Fieldhouse: 1:57.79 1/26/2007 David Osborne

| Lane Name | Yr | School | Seed Time |
|-----------|----|--------|-----------|
|-----------|----|--------|-----------|

## Section 1 of 2 Finals

|    |                  |                   |         |
|----|------------------|-------------------|---------|
| 1  | Kual, Daniel     | JR Union (Ky.)    | 2:02.38 |
| 2  | Thomas, Jerome   | SO Lindsey Wilson | 2:05.40 |
| 3  | Bozue, Josh      | Unattached        | 2:04.00 |
| 4  | Blagg, Ethan     | FR Cedarville     | 2:02.00 |
| 5  | Spencer, Matt    | SO Rio Grande     | 2:06.00 |
| 6  | Holbert, Zach    | Shawnee State C   | 2:02.00 |
| 7  | Lacey, Michael   | FR Cedarville     | 2:04.00 |
| 8  | O'Quinn, Brennan | SR Union (Ky.)    | 2:01.23 |
| 9  | Wilson, Bryce    | FR Rio Grande     | 2:06.00 |
| 10 | Thayer, Evan     | FR Cedarville     | 1:59.00 |



## Cedarville Collegiate Indoor Invite 2009 - 1/6/2009 to 1/16/2009

Cedarville University, Cedarville, OH

## Meet Program

## Section 2 of 2 Finals...(Event 27 Men 800 Meter Run)

|    |                    |    |                 |         |
|----|--------------------|----|-----------------|---------|
| 1  | Warren, David      | SR | Wilmington (Oh) | NT      |
| 2  | Gerlach, Eli       |    | Shawnee State C | 2:12.00 |
| 3  | Romeo, Rob         | SO | Wilmington (Oh) | NT      |
| 4  | Davis, Steven      | SO | Rio Grande      | 2:06.75 |
| 5  | Williams, Rayvon   |    | Central State   | NT      |
| 6  | Myers, Eric        | SR | Wilmington (Oh) | 2:10.00 |
| 7  | Hornick, Justin    |    | Shawnee State C | 2:12.00 |
| 8  | Hagens, Danny      |    | Central State   | NT      |
| 9  | Schuschu, Aaron    | FR | Wilmington (Oh) | NT      |
| 10 | Kempton, Eric      | JR | Cedarville      | 2:06.50 |
| 11 | Cunningham, Jordan | JR | Rio Grande      | 2:18.00 |

## Event 28 Women 200 Meter Dash

Meet Record: 25.23 2/3/2006 Sune' Stamper

Fieldhouse: 25.23 2/3/2006 Sune' Stamper

| Lane | Name | Yr | School | Seed | Time |
|------|------|----|--------|------|------|
|------|------|----|--------|------|------|

## Section 1 of 4 Finals

|   |                  |    |                 |       |
|---|------------------|----|-----------------|-------|
| 1 | Martin, Callen   | JR | Wilmington (Oh) | 27.25 |
| 2 | Baker, Kristie   |    | Central State   | 26.80 |
| 3 | Winik, Alexa     | FR | Cedarville      | 26.20 |
| 4 | Brigham, Tiffany | JR | Wright State    | 25.98 |
| 5 | Detty, Tory      | JR | Wright State    | 27.43 |
| 6 | Kamann, Nicole   | JR | Wright State    | 27.20 |

## Section 2 of 4 Finals

|   |                    |    |               |       |
|---|--------------------|----|---------------|-------|
| 1 | Williams, Mahogany |    | Central State | 28.20 |
| 2 | Watkins, Kelsey    | FR | Cedarville    | 27.90 |
| 3 | Yaeger, Emily      | FR | Union (Ky.)   | 28.12 |
| 4 | Trampler, Aubrey   | FR | Wright State  | 28.20 |
| 5 | Gruett, Chelsea    | FR | Cedarville    | 27.80 |
| 6 | McKinney, Anitra   |    | Central State | 28.40 |

## Section 3 of 4 Finals

|   |                  |    |               |       |
|---|------------------|----|---------------|-------|
| 1 | Graves, Kayla    | FR | Rio Grande    | 28.68 |
| 2 | Crcary, Tiffany  |    | Central State | 28.80 |
| 3 | Wuobio, Heather  | SO | Cedarville    | 28.80 |
| 4 | Parrish, Heather | SR | Wright State  | 28.50 |
| 5 | Mattia, Cassie   | FR | Rio Grande    | 28.72 |
| 6 | Walker, Rachel   | SO | Rio Grande    | 29.31 |

## Section 4 of 4 Finals

|   |                 |    |            |       |
|---|-----------------|----|------------|-------|
| 2 | Gandy, Tim/Aira | FR | Wittenberg | NT    |
| 3 | Spradlin, Erica | SO | Rio Grande | 29.96 |
| 4 | Dorniano, Kari  | FR | Wittenberg | NT    |
| 5 | Kirby, Meredith | FR | Wittenberg | NT    |

## Event 29 Men 200 Meter Dash

Meet Record: 22.45 1/18/2008 Josh Perry

Fieldhouse: 22.45 1/18/2008 Josh Perry

| Lane | Name | Yr | School | Seed | Time |
|------|------|----|--------|------|------|
|------|------|----|--------|------|------|

## Section 1 of 5 Finals

|   |                  |    |             |       |
|---|------------------|----|-------------|-------|
| 1 | strong, rodncy   |    | Unattached  | 22.00 |
| 2 | Hoffman, Justin  | FR | Cedarville  | 23.20 |
| 3 | Barnes, Johnny   | JR | Union (Ky.) | 22.78 |
| 4 | Benjamin, Marcus | SO | Cedarville  | 23.10 |
| 5 | Craig, Jason     |    | Olympia TC  | 21.40 |
| 6 | Smith, Marekus   | JR | Union (Ky.) | 23.27 |

## Section 2 of 5 Finals

|   |                    |    |                 |       |
|---|--------------------|----|-----------------|-------|
| 1 | Ward, Diante'      | FR | Wilmington (Oh) | 24.00 |
| 2 | Legard, Rashaan    |    | Central State   | 23.90 |
| 3 | Molstre, Jordan    | SO | Cedarville      | 23.90 |
| 4 | Williams, Mark     | SO | Cedarville      | 23.57 |
| 5 | Davenport, Freddie | FR | Wilmington (Oh) | 24.00 |
| 6 | Green, Michael     | FR | Rio Grande      | 23.87 |

## Section 3 of 5 Finals

|   |                    |    |                 |       |
|---|--------------------|----|-----------------|-------|
| 1 | Benson, Tyler      | FR | Wilmington (Oh) | 24.00 |
| 2 | Brooks, Courtney   |    | Central State   | 26.20 |
| 3 | Kittle, Douglas    | FR | Cedarville      | 24.90 |
| 4 | Lamarre, Manoach   | SR | Wittenberg      | 24.26 |
| 5 | Gruenberg, Stephen |    | Drake County Tt | 24.00 |
| 6 | Strata, Nick       | SR | Wilmington (Oh) | 24.50 |

## Section 4 of 5 Finals

|   |                   |    |               |    |
|---|-------------------|----|---------------|----|
| 2 | Johnson, Ronnie   |    | Central State | NT |
| 3 | Thinnes, Jimmy    | SR | Wittenberg    | NT |
| 4 | Ferrari, Mike     | FR | Wittenberg    | NT |
| 5 | Mansaray, Mohamed | FR | Wittenberg    | NT |

## Section 5 of 5 Finals

|   |                  |    |                 |    |
|---|------------------|----|-----------------|----|
| 2 | Richardson, Josh | SO | Wilmington (Oh) | NT |
| 3 | King, Mark       | SR | Wittenberg      | NT |
| 4 | Gibson, Sean     |    | Central State   | NT |

## Event 30 Men 5000 Meter Run

Meet Record: 15:00.00 2/4/2005 Matt Boyles

Fieldhouse: 15:00.00 2/4/2005 Matt Boyles

| Lane | Name | Yr | School | Seed | Time |
|------|------|----|--------|------|------|
|------|------|----|--------|------|------|

## Section 1 of 1 Finals

|    |                  |    |                 |          |
|----|------------------|----|-----------------|----------|
| 1  | Badertscher, TJ  | SO | Cedarville      | 15:45.00 |
| 2  | Jones, Blake     |    | Shawnee State C | 15:50.00 |
| 3  | Shroyer, Ben     |    | Unattached      | 16:00.00 |
| 4  | Webb, Paul       |    | Shawnee State C | 16:00.00 |
| 5  | Linkous, Josh    |    | Shawnee State C | 16:00.00 |
| 6  | Hickey, Tyler    |    | Shawnee State C | 16:00.00 |
| 7  | Cathey, Joe      | FR | Cedarville      | 16:00.00 |
| 8  | Clendaniel, Rick |    | Unattached      | 16:00.00 |
| 9  | Wentz, Chuck     |    | Shawnee State C | 16:05.00 |
| 10 | Owen, Michael    |    | Shawnee State C | 16:05.00 |
| 11 | Jinks, Joe       |    | Shawnee State C | 16:10.00 |
| 12 | Newport, Jason   |    | Unattached      | 16:15.00 |
| 13 | Meyer, Shane     |    | Shawnee State C | 16:15.00 |
| 14 | Belcher, JT      | FR | Cedarville      | 16:30.00 |
| 15 | Edmunds, Andrew  | FR | Rio Grande      | NT       |
| 16 | Miller, Zane     | FR | Rio Grande      | NT       |



## Cedarville Collegiate Indoor Invite 2009 - 1/6/2009 to 1/16/2009

Cedarville University, Cedarville, OH

## Meet Program

**Event 31 Women 4x400 Meter Relay**

Meet Record: 4:06.20 2/3/2006 Miami University

K Horning, B Allen, T Nye, A Tepe

Fieldhouse: 4:06.20 2/3/2006 Miami University

K Horning, B Allen, T Nye, A Tepe

| Lane | Team | Relay | Seed Time |
|------|------|-------|-----------|
|------|------|-------|-----------|

**Section 1 of 1 Finals**

|   |                   |   |         |
|---|-------------------|---|---------|
| 2 | Rio Grande        | A | 4:28.00 |
| 3 | Wright State      | A | 4:23.96 |
| 4 | Wilmington (Ohio) | A | 4:20.11 |
| 5 | Cedarville        | A | 4:01.00 |

**Event 32 Men 4x400 Meter Relay**

Meet Record: 3:30.23 1/18/2008 Rio Grande

R Cook, B Baston, C Woodfork, J Gravely

Fieldhouse: 3:30.23 1/18/2008 Rio Grande

R Cook, B Baston, C Woodfork, J Gravely

| Lane | Team | Relay | Seed Time |
|------|------|-------|-----------|
|------|------|-------|-----------|

**Section 1 of 2 Finals**

|   |                   |   |         |
|---|-------------------|---|---------|
| 3 | Union (Ky.)       | A | 3:32.90 |
| 4 | Wittenberg        | A | 3:32.10 |
| 5 | Cedarville        | A | 3:32.00 |
| 6 | Wilmington (Ohio) | A | 3:35.00 |

**Section 2 of 2 Finals**

|   |                   |   |         |
|---|-------------------|---|---------|
| 3 | Cedarville        | B | NT      |
| 4 | Wilmington (Ohio) | B | 3:35.00 |
| 5 | Wilmington (Ohio) | C | NT      |

**Event 33 Women 3000 Meter Race Walk**

Meet Record: 7:57.66 2/4/2005 Tina Peters

Fieldhouse: 7:57.66 2/4/2005 Tina Peters

| Lane Name | Yr | School | Seed Time |
|-----------|----|--------|-----------|
|-----------|----|--------|-----------|

**Section 1 of 1 Finals**

|   |                   |    |                 |          |
|---|-------------------|----|-----------------|----------|
| 1 | Randall, Susan    |    | Miami Valley Tc | NT       |
| 2 | Johnson, Amanda   | JR | Lindsey Wilson  | 15:40.40 |
| 3 | Peters, Tina      |    | Goshen          | 16:00.00 |
| 4 | Hensley, Barb     |    | Miami Valley Tc | NT       |
| 5 | Malinowski, Katie | JR | Cornerstone     | 17:00.00 |
| 6 | Steingass, Kelly  |    | Miami Valley Tc | NT       |
| 7 | Furnish, Megan    | SO | Lindsey Wilson  | 18:30.00 |

**Event 34 Men 3000 Meter Race Walk**

Meet Record: 11:47.90 1/26/2007 Matt Boyles

Fieldhouse: 11:47.90 1/26/2007 Matt Boyles

| Lane Name | Yr | School | Seed Time |
|-----------|----|--------|-----------|
|-----------|----|--------|-----------|

**Section 1 of 1 Finals**

|    |                  |    |                 |          |
|----|------------------|----|-----------------|----------|
| 1  | Hively, Kyle     | JR | Rio Grande      | NT       |
| 2  | Mannozi, Mike    | JR | Notre Dame (Oh) | 16:00.00 |
| 3  | Wiseman, Josh    | SO | Cedarville      | 13:58.24 |
| 4  | Sinick, Brad     |    | Miami Valley Tc | NT       |
| 5  | Johnson, Douglas |    | Kentucky Racers | 14:30.00 |
| 6  | Bacon, Grant     | SO | Cedarville      | 15:23.00 |
| 7  | Rodriguez, Mike  | JR | Notre Dame (Oh) | 18:00.00 |
| 8  | Ikeda, Paul      | SO | Cedarville      | NT       |
| 9  | Crowdus, Evan    | FR | Lindsey Wilson  | 14:10.00 |
| 10 | Meekhof, Mike    | FR | Notre Dame (Oh) | 18:00.00 |
| 11 | Fitch, Ed        |    | Miami Valley Tc | NT       |
| 12 | Campbell, Seth   | SR | Cedarville      | 13:58.37 |
| 13 | Schmid, Chris    |    | Unattached      | 16:30.00 |
| 14 | Klink, Zach      | FR | Cedarville      | NT       |

**Event 35 Men 600 Meter Run**

| Lane Name | Yr | School | Seed Time |
|-----------|----|--------|-----------|
|-----------|----|--------|-----------|

**Section 1 of 2 Finals**

|   |                 |    |                 |         |
|---|-----------------|----|-----------------|---------|
| 1 | Ferrari, Mike   | FR | Wittenberg      | NT      |
| 2 | Stiles, Austin  | JR | Wilmington (Oh) | 1:27.00 |
| 3 | Spence, Rodney  |    | Central State   | 1:27.00 |
| 4 | Carroll, Pat    | FR | Wilmington (Oh) | 1:27.00 |
| 5 | Hartley, Justin | FR | Rio Grande      | 1:33.00 |

**Section 2 of 2 Finals**

|   |                    |    |               |         |
|---|--------------------|----|---------------|---------|
| 1 | Barnes, Johnny     | JR | Union (Ky.)   | 1:26.00 |
| 2 | Stallworth, Justin |    | Central State | 1:25.00 |
| 3 | Kuhn, Kevin        | SR | Cedarville    | 1:24.00 |
| 4 | Groman, Kurt       | JR | Cedarville    | 1:24.00 |
| 5 | Husfelt, Eli       | FR | Cedarville    | 1:26.00 |
| 6 | Miller, Cody       | JR | Union (Ky.)   | 1:26.00 |

**Event 36 Women 600 Meter Run**

| Lane Name | Yr | School | Seed Time |
|-----------|----|--------|-----------|
|-----------|----|--------|-----------|

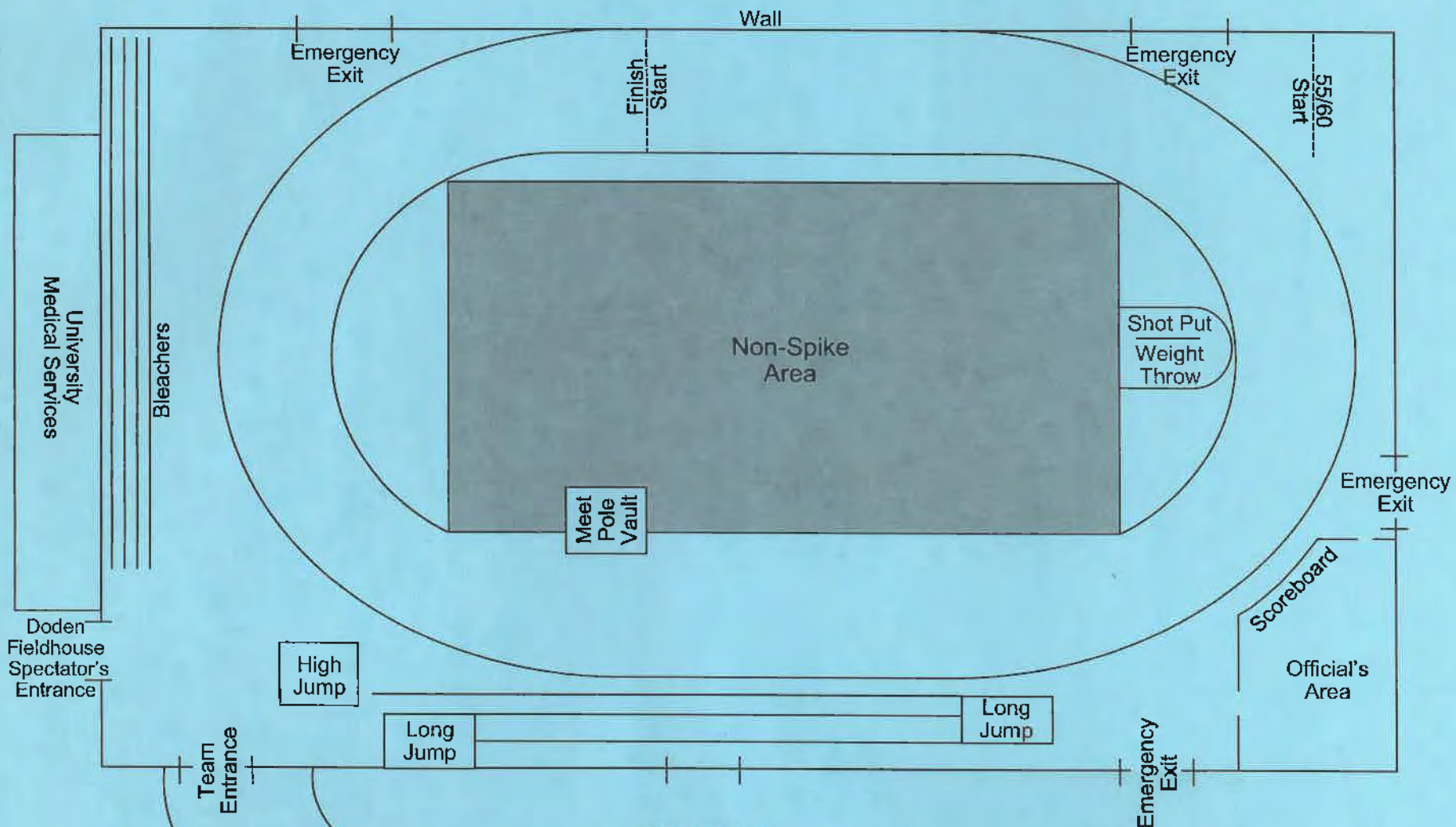
**Section 1 of 2 Finals**

|   |                    |    |                 |         |
|---|--------------------|----|-----------------|---------|
| 1 | Foote, Colleen     | FR | Wilmington (Oh) | NT      |
| 2 | Stockham, Danielle | FR | Rio Grande      | 2:08.00 |
| 3 | Patrick, Tiffany   | SO | Notre Dame (Oh) | 1:50.00 |
| 4 | Renner, Kayla      | FR | Rio Grande      | 1:52.00 |
| 5 | Foote, Anna        | FR | Wilmington (Oh) | NT      |

**Section 2 of 2 Finals**

|   |                 |    |               |         |
|---|-----------------|----|---------------|---------|
| 1 | Holt, Nicole    |    | Central State | 1:48.00 |
| 2 | Rice, Marla     | SR | Cedarville    | 1:39.00 |
| 3 | Davies, Bethany | SR | Cedarville    | 1:34.00 |
| 4 | Wong, Rachel    | FR | Cedarville    | 1:38.00 |
| 5 | Lanphier, Katie | FR | Cedarville    | 1:44.00 |





**FITNESS CENTER**



*Doden Fieldhouse  
Indoor Track*



# **NATIONAL GUARD**



## **OHIO**

- **Student Loan Repayment**
- **Federal Tuition Assistance**

**SSG Aaron Weaver**  
**937-232-7712**