

9-22-2010

Coaches' Top 25 Listings

Cedarville University

Follow this and additional works at: https://digitalcommons.cedarville.edu/mens_cross_country_statistics

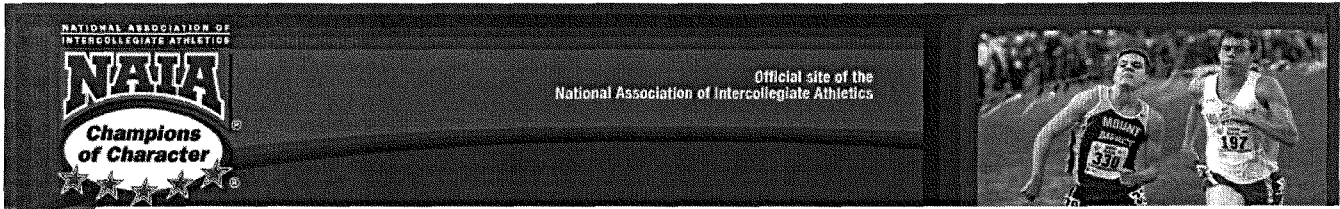
Part of the [Higher Education Commons](#), and the [Sports Studies Commons](#)

Recommended Citation

Cedarville University, "Coaches' Top 25 Listings" (2010). *Men's Cross Country Statistics*. 219.
https://digitalcommons.cedarville.edu/mens_cross_country_statistics/219

This Statistics is brought to you for free and open access by DigitalCommons@Cedarville, a service of the Centennial Library. It has been accepted for inclusion in Men's Cross Country Statistics by an authorized administrator of DigitalCommons@Cedarville. For more information, please contact digitalcommons@cedarville.edu.

Footer Logo



CHAMPIONS OF CHARACTER

CORPORATE PARTNERS

MEMBERSHIP SERVICES



Men's Cross Country

No. 1 Malone and No. 2 Southern Oregon Control NAIA Men's Cross Country Coaches' Poll

No. 16 Azusa Pacific jumps nine spots as the poll's biggest mover

Sept. 22, 2010

Contact: Amanda Dahl, NAIA Manager of Sports Information & Media Services, adahl@naia.org

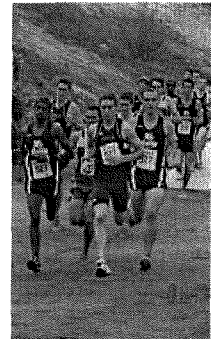
KANSAS CITY, Mo. - No. 1 Malone (Ohio) and No. 2 Southern Oregon were two of three teams to maintain rank in the second edition of the NAIA Men's Cross Country Coaches' Top 25 Poll, the national office announced Wednesday. The Pioneers were awarded 14 first-place votes to total 674 points. Southern Oregon also brought in eight first-place nods for 667 points. Third-ranked Wayland Baptist (Texas) became the only other team in 2010 to earn first-place votes with two and registered 629 points. Rounding out the top-five teams are No. 4 Shawnee State (Ohio) (608 points) and No. 5 Embry-Riddle (Fla.) (596 points).

Outside of the top-two holding onto rank, Cedarville (Ohio) held steady at No. 23. Thirteen teams took a setback in the poll. Dakota State's (S.D.) fall from No. 17 to 22 was the largest drop, while No. 14 Eastern Oregon, No. 17 Olivet Nazarene (Ill.) and No. 24 Southwestern (Kan.) each moved back three spots. A nine-spot upward move by No. 16 Azusa Pacific (Calif.) marked the biggest improvement among the six teams that improved rank.

A trio of previously unranked squads garnered national rank this week. Newly ranked teams include No. 12 Graceland (Iowa), No. 21 Vanguard (Calif.) and No. 25 California Baptist. Falling out of the poll are previously ranked No. 16 McKendree (Ill.), No. 22 Concordia (Ore.) and No. 24 Westmont (Calif.).

Fifteen conferences and independents were recognized in the Top 25, led by the Golden State Athletic Conference's four ranked teams. Representing the GSAC are No. 7 The Master's (Calif.), Azusa Pacific, Vanguard and California Baptist. The Association of Independent Institutions, Cascade Collegiate Conference and Sooner Athletic Conference each boast three ranked squads. The American Midwest Conference also has a ranked duo.

The poll was voted upon by a panel of head coaches representing each of the conferences, independents and unaffiliated groups. The next poll of the 2010 season will be released on Sept. 29.



FALL SPORTS

- Cross Country - M
- Cross Country - W
- Football
- Soccer - M
- Soccer - W
- Volleyball

WINTER SPORTS

- Basketball - DI M
- Basketball - DI W
- Basketball - DI M
- Basketball - DI W
- Swimming & Diving - M
- Swimming & Diving - W
- Indoor Track & Field - M
- Indoor Track & Field - W
- Wrestling

SPRING SPORTS

- Baseball
- Golf - M
- Golf - W
- Softball
- Tennis - M
- Tennis - W
- Outdoor Track & Field - M
- Outdoor Track & Field - W

EMERGING SPORTS

Search

NAIA.org

THE WEB

powered by YAHOO! SEARCH

RANK	LAST WEEK	SCHOOL (1 ST PLACE VOTES)	TOTAL POINTS
1	1	Malone University (Ohio) (14)	674
2	2	Southern Oregon University (8)	667
3	7	Wayland Baptist University (Texas) (2)	629
4	3	Shawnee State University (Ohio)	608
5	4	Embry-Riddle Aeronautical University (Fla.)	596
6	5	University of British Columbia	556
7	10	The Master's College (Calif.)	528
8	6	Aquinas College (Mich.)	512
9	8	Concordia University (Neb.)	501
10	8	College of Idaho	481
11	12	California State University-San Marcos	439
12	RV	Graceland University (Iowa)	398
13	15	Shorter University (Ga.)	385
14	11	Eastern Oregon University	377
15	13	Oklahoma Christian University	374
16	25	Azusa Pacific University (Calif.)	344
17	14	Olivet Nazarene University (Ill.)	342
18	17	Simon Fraser University (B.C.)	305
19	20	Lewis-Clark State College (Idaho)	274
20	19	Oklahoma Baptist University	264
21	NR	Vanguard University (Calif.)	248
22	17	Dakota State University (S.D.)	206
23	23	Cedarville University (Ohio)	205
24	21	Southwestern College (Kan.)	184
25	RV	California Baptist University	178

Others receiving votes: University of St. Francis (Ill.) 124; Concordia University (Ore.) 121; McKendree University (Ill.) 113; Siena Heights University (Mich.) 71; Indiana Wesleyan University 58; Black Hills State University (S.D.) 57; Westmont College (Calif.) 54; University of Great Falls (Mont.) 39; Cornerstone University (Mich.) 14; Dordt College (Iowa) 6; Walsh University (Ohio) 5; Park University (Mo.) 3; Mount Mercy University (Iowa) 1; Morningside College (Iowa) 1; McPherson College (Kan.) 1; Marian University (Ind.) 1.