
Women's Basketball Programs

Women's Basketball

12-12-2020

Cedarville vs. Malone

Cedarville University

Follow this and additional works at: https://digitalcommons.cedarville.edu/womens_basketball_programs



Part of the [Higher Education Commons](#), and the [Sports Studies Commons](#)

Recommended Citation

Cedarville University, "Cedarville vs. Malone" (2020). *Women's Basketball Programs*. 404.
https://digitalcommons.cedarville.edu/womens_basketball_programs/404

This Program is brought to you for free and open access by DigitalCommons@Cedarville, a service of the Centennial Library. It has been accepted for inclusion in Women's Basketball Programs by an authorized administrator of DigitalCommons@Cedarville. For more information, please contact digitalcommons@cedarville.edu.

GAMEDAY



**Stevie
Johnting**

Scan the codes for
more....

Lady Jacket basketball info



Pioneer basketball info



G-MAC basketball info



**LADY JACKETS
VS
MALONE**



*We back the
Jackets all
the way*



*Cedarville's only
Real Estate,
Auction &
Appraisal
Company*

No-fee consultations available.



#CUJACKETS

SATURDAY • DEC. 12 • 1:00 PM

2020-21 Cedarville University Basketball Statistics

RECORD:	OVERALL	HOME	AWAY	NEUTRAL
ALL GAMES	2-1	1-0	1-1	0-0
CONFERENCE	2-1	1-0	1-1	0-0
NON-CONFERENCE	0-0	0-0	0-0	0-0


#	Player	gp-gs	min	Total		3-Point		F-Throw		Rebounds				pf	dq	a	to	blk	stl	pts	avg	
				fg-fga	fg%	3fg-fga	3fg%	ft-fa	ft%	off	def	tot	avg									
05	Huffman, Ashlyn	3-3	98	32.7	28-48	.583	7-14	.500	14-15	.933	0	16	16	5.3	6	0	16	11	0	6	77	25.7
24	Mader, Allison	3-3	86	28.7	17-36	.472	5-14	.357	11-14	.786	4	7	11	3.7	6	0	3	3	2	4	50	16.7
11	Bolender, Isabelle	3-3	84	28.0	16-37	.432	5-16	.313	10-11	.909	5	15	20	6.7	8	0	4	3	0	1	47	15.7
00	Chapman, Emily	3-0	64	21.3	12-23	.522	7-15	.467	1-2	.500	3	9	12	4.0	7	0	10	4	0	5	32	10.7
04	Garr, Paige	3-3	74	24.7	10-25	.400	5-14	.357	5-5	1.000	1	10	11	3.7	4	0	6	5	0	3	30	10.0
44	Moore, Lexi	3-3	65	21.7	3-5	.600	0-1	.000	7-14	.500	3	11	14	4.7	10	1	2	2	1	7	13	4.3
03	Wheeler, Anne	3-0	40	13.3	2-9	.222	1-4	.250	6-6	1.000	1	1	2	0.7	9	1	4	1	0	7	11	3.7
20	Marshall, Allie	3-0	44	14.7	4-7	.571	0-0	.000	0-0	.000	4	4	8	2.7	10	1	1	2	1	0	8	2.7
13	Johnting, Stevie	3-0	39	13.0	0-10	.000	0-8	.000	0-0	.000	0	4	4	1.3	5	0	1	0	0	0	0	0.0
23	Sweeney, Lydia	1-0	2	2.0	0-1	.000	0-1	.000	0-0	.000	0	0	0	0.0	0	0	0	0	0	0	0	0.0
12	Freeman, Abby	1-0	4	4.0	0-1	.000	0-1	.000	0-0	.000	0	0	0	0.0	1	0	1	0	0	0	0	0.0
Team											5	4	9				1					
Total.....		3	600		92-202	.455	30-88	.341	54-67	.806	26	81	107	35.7	66	3	48	32	4	33	268	89.3
Opponents.....		3	600		81-188	.431	25-73	.342	58-75	.773	32	87	119	39.7	63	0	50	49	3	18	245	81.7




SPRADLIN BROS. WELDING
Quality Work Since 1962
937-323-2992
www.weldedparts.com



Hampton Inn
Springfield, Ohio
937-325-8480



Germain
Ford of Beaver Creek
Minutes Away, with an Experience Miles Above!
BUILT Ford PROUD



Young's
Jersey Dairy
One mile north of Yellow Springs on Route 68
OPEN 7 AM TO 10 PM EVERY DAY
937-325-0629



Learn God's Word.
Live God's Way.
Light God's World.
GRACE
BAPTIST CHURCH
CEDARVILLE, OHIO
www.gracecedarville.org

2020-21 Malone University Basketball Statistics

Game Records

Record	Overall	Home	Away	Neutral
ALL GAMES	1-1	0-1	1-0	0-0
CONFERENCE	1-1	0-1	1-0	0-0
NON-CONFERENCE	0-0	0-0	0-0	0-0

Score by Periods

Team	1st	2nd	3rd	4th	OT	TOT
Malone	43	34	34	34	0	145
Opponents	45	32	30	38	0	145

Team Box Score

No.	Player	Total		3-Point		F-Throw		Rebounds				PF	DQ	A	TO	BLK	STL	PTS	AVG			
		GP-GS	MIN	AVG	FG-FGA	FG%	3FG-FGA	3FG%	FT-FTA	FT%	OFF									DEF	TOT	AVG
2	GROFF, Holly	2-2	73:23	36.7	13-32	.406	6-18	.333	2-2	1.000	0	9	9	4.5	2	0	10	4	0	3	34	17.0
13	HUNTER, Madison	2-2	44:16	22.1	9-20	.450	1-8	.125	7-7	1.000	4	5	9	4.5	6	0	3	3	0	2	26	13.0
12	KALLAS, Emma	1-0	26:37	26.6	6-11	.545	1-3	.333	0-0	.000	1	8	9	9.0	5	1	0	1	0	0	13	13.0
10	HUTCHISON, Alexis	2-2	43:03	21.5	11-20	.550	1-5	.200	2-2	1.000	0	4	4	2.0	2	0	2	3	0	5	25	12.5
4	CAMPBELL, Robin	2-2	67:44	33.9	9-20	.450	3-5	.600	2-3	.667	6	5	11	5.5	5	1	6	5	0	5	23	11.5
14	MANOS, Lexi	2-0	36:14	18.1	4-13	.308	3-9	.333	0-0	.000	0	4	4	2.0	5	0	2	2	0	0	11	5.5
11	ABDULLA, Jade	2-0	45:35	22.8	2-13	.154	1-5	.200	0-0	.000	2	3	5	2.5	2	0	5	0	0	1	5	2.5
24	POOLE, Mikayla	2-0	08:18	4.2	1-2	.500	1-2	.500	0-0	.000	0	0	0	0.0	1	0	0	0	0	0	3	1.5
5	WEBER, Nikki	2-2	33:10	16.6	1-5	.200	1-3	.333	0-0	.000	1	3	4	2.0	4	0	1	1	0	0	3	1.5
33	LUCAS, Bri	2-0	21:24	10.7	1-6	.167	0-3	.000	0-0	.000	0	2	2	1.0	3	0	0	1	0	0	2	1.0
3	SALES, Vanessa	1-0	00:16	0.3	0-0	.000	0-0	.000	0-0	.000	0	0	0	0.0	0	0	0	0	0	0	0	0.0
Team											2	4	6				1					
Total		2	400		57-142	.401	18-61	.295	13-14	.929	16	47	63	31.5	35	2	29	21	0	16	145	72.5
Opponents		2	400		54-115	.470	17-37	.459	20-30	.667	19	68	87	43.5	28	0	32	40	5	6	145	72.5

Cedarville University "Lady Jackets" (2-1, 2-1)

HEAD COACH: KARI HOFFMAN (5th year, 89-33, .730)
 ASST. COACHES: JOHN LEONZO, STEPHEN BUETTLELL, ABBY WOLFORD, JIMMY HOFFMAN

LocationCedarville, OH Enrollment4,550
 Founded1887 AffiliationNCAA II, NCCAA I



No	Player	Pos	Ht	Yr	Hometown	3-Pt. FG	2-Pt. FG	Free Throws	Fouls	3FG	2FG	FT	TP
0	Emily Chapman	G	5-5	Jr	Proctorville, OH	3333333	22222222222	11111111111	12345				
3	Anne Wheeler	G	5-7	Fr	Cincinnati, OH	3333333	22222222222	11111111111	12345				
4	Paige Garr	G	5-9	So	Goshen, OH	3333333	22222222222	11111111111	12345				
5	Ashlyn Huffman	G	5-6	Sr	Columbus, IN	3333333	22222222222	11111111111	12345				
11	Isabelle Bolender	G	5-9	So	Cedarville, OH	3333333	22222222222	11111111111	12345				
12	Abby Freeman	G	5-6	So	Delta, OH	3333333	22222222222	11111111111	12345				
13	Stevie Johnting	G	5-9	Sr	Arcanum, OH	3333333	22222222222	11111111111	12345				
20	Allie Marshall	F	5-11	So	Proctorville, OH	3333333	22222222222	11111111111	12345				
23	Lydia Sweeney	G	5-8	Fr	Grand Island, NY	3333333	22222222222	11111111111	12345				
24	Allison Mader	G	5-7	Jr	Tipp City, OH	3333333	22222222222	11111111111	12345				
44	Lexi Moore	F	5-10	Jr	Beavercreek, OH	3333333	22222222222	11111111111	12345				
						3333333	22222222222	11111111111	12345				
						3333333	22222222222	11111111111	12345				
						3333333	22222222222	11111111111	12345				
						3333333	22222222222	11111111111	12345				
						3333333	22222222222	11111111111	12345				

OVER 226 YEARS OF EXPERIENCE!

SCREEN Play
 PRINTING EST. 1984
 937-374-2646

1450 South Patton Street
 Xenia, OH 45385
 email: scplay@aol.com
 www.screenplayprinting.com

Germain
 Ford of Beavercreek

Minutes Away,
 with an Experience
 Miles Above!

BUILT Ford PROUD

Hampton Inn

Springfield,
 Ohio
 937-325-8480

Cotterman & Company INC.
 INDUSTRIAL & COMMERCIAL ROOFING

www.CottermanRoofing.com
 Dayton & Minster, Ohio
 937-433-8268

SUBWAY
 eat fresh.

13 E. Chillicothe St.,
 Cedarville, OH
 → 766-7299 ←
 "We Back the Jackets!"

Malone University "Pioneers" (1-1, 1-1)

HEAD COACH: SELANA REALE (3rd year, 35-26, .574)
 ASST. COACH: KYLE BIGLIN GRAD ASST: MORIAH MONACO, MEGAN BELKE

Location.....Canton, OH Enrollment1,700
 Founded1892 AffiliationNCAA II



No	Player	Pos	Ht	Yr	Hometown	3-Pt. FG	2-Pt. FG	Free Throws	Fouls	3FG	2FG	FT	TP
2	Holly Groff	G	5-4	Sr	Macedonia, OH	3333333	22222222222	11111111111	12345				
3	Vanessa Sales	G	5-7	So	Canton, OH	3333333	22222222222	11111111111	12345				
4	Robin Campbell	G	5-4	Jr	Alliance, OH	3333333	22222222222	11111111111	12345				
5	Nikki Weber	G	5-4	So	Loudonville, OH	3333333	22222222222	11111111111	12345				
10	Alexis Hutchison	G	5-7	So	Centerville, OH	3333333	22222222222	11111111111	12345				
11	Jade Abdulla	G/F	5-8	So	North Canton, OH	3333333	22222222222	11111111111	12345				
12	Emma Kallas	G/F	5-10	So	Waukesha, WI	3333333	22222222222	11111111111	12345				
13	Madison Hunter	G	5-11	Jr	New Concord, OH	3333333	22222222222	11111111111	12345				
14	Lexi Manos	G	5-5	Sr	North Canton, OH	3333333	22222222222	11111111111	12345				
20	Keziah Bachert	G/F	5-8	Fr	Waco, TX	3333333	22222222222	11111111111	12345				
23	Olivia Clark	F	6-2	Jr	Jackson Center, OH	3333333	22222222222	11111111111	12345				
24	Mikayla Poole	G	5-8	Jr	Carrollton, OH	3333333	22222222222	11111111111	12345				
31	Jill Hawks	G	5-7	So	North Canton, OH	3333333	22222222222	11111111111	12345				
32	Myla Kline	G	5-8	Fr	Holland, NY	3333333	22222222222	11111111111	12345				
33	Bri Lucas	F	6-0	So	Fort Wayne, IN	3333333	22222222222	11111111111	12345				
						3333333	22222222222	11111111111	12345				
						3333333	22222222222	11111111111	12345				
						3333333	22222222222	11111111111	12345				

2020-21 Cedarville University Women's Basketball



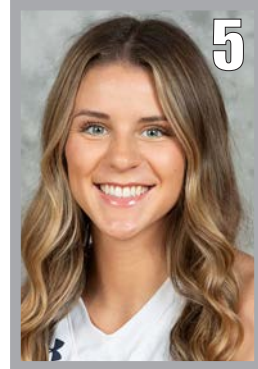
Emily Chapman
5-5, Guard
Junior
Proctorville, OH
[@emily_chapman](#)



Anne Wheeler
5-7, Guard
Freshman
Cincinnati, OH



Paige Garr
5-9, Guard
Sophomore
Goshen, OH
[@paigegarr](#)



Ashlyn Huffman
5-6, Guard
Senior
Columbus, IN



Isabelle Bolender
5-9, Guard
Sophomore
Cedarville, OH



Abby Freeman
5-6, Guard
Sophomore
Delta, OH
[@abbyfreeman23](#)



Stevie Johnting
5-9, Guard
Senior
Arcanum, OH
[@Sjohnting](#)



Allie Marshall
5-11, Forward
Sophomore
Proctorville, OH
[@alliemarsha11](#)



Lydia Sweeney
5-8, Guard
Freshman
Grand Island, NY
[@LydiaSweeney02](#)

 Serving Greene County and Surrounding Areas

CEDARLAND
EVENT CENTER

200 Parkview Lane, Cedarville
(near Hearststone Inn)

BOOKING EVENTS NOW!
Banquets • Receptions • Parties Meetings • Auctions
Banquet capacity: 225-250

(937) 766-2300



Allison Mader
5-7, Guard
Junior
Tipp City, OH
[@_allisonmader](#)



Lexi Moore
5-10, Forward
Junior
Beavercreek, OH
[@leximoore](#)

Mom and Dad's Dairy Bar & Grille

320 N. Main Street
Cedarville, OH
(937)766-2046
Offering Game Night Specials

 Fresh Pure Chemical Free Drinking Water

Free Delivery Home & Office
1-800-800-8124
Complimentary Trial Offer
• Cooler & Dispenser
• Sales & Rental
www.aquafallswater.com

Meeting needs, changing lives

 **SEND Relief**
SendRelief.org

1-833-SENDOPE
(833)736-3467



[@cujackets](#)

