

2-13-2021

Cedarville University vs. Kentucky Wesleyan College

Cedarville University

Follow this and additional works at: https://digitalcommons.cedarville.edu/womens_basketball_programs



Part of the [Higher Education Commons](#), and the [Sports Studies Commons](#)

This Program is brought to you for free and open access by DigitalCommons@Cedarville, a service of the Centennial Library. It has been accepted for inclusion in Women's Basketball Programs and Game Notes by an authorized administrator of DigitalCommons@Cedarville. For more information, please contact digitalcommons@cedarville.edu.

GAMEDAY



**Allison
Mader**

Scan the codes for
more....

Lady Jacket basketball info



Panther basketball info



G-MAC basketball info



#17 LADY JACKETS
VS
KY WESLEYAN



**Mom and Dad's
Dairy Bar &
Grille**

320 N. Main Street
Cedarville, OH
(937)766-2046

Offering Game Night Specials



#CUJACKETS

SATURDAY • FEB. 13 • 1:00 PM

2020-21 Cedarville University Basketball Statistics

RECORD:	OVERALL	HOME	AWAY	NEUTRAL
ALL GAMES	17-2	9-0	8-2	0-0
CONFERENCE	17-2	9-0	8-2	0-0
NON-CONFERENCE	0-0	0-0	0-0	0-0

#	Player	gp-gs	min	avg	Total		3-Point		F-Throw		Rebounds				pf	dq	a	to	blk	stl	pts	avg
					fg-fga	fg%	3fg-fga	3fg%	ft-fa	ft%	off	def	tot	avg								
05	Huffman, Ashlyn	19-19	532	28.0	100-213	.469	24-55	.436	69-85	.812	4	107	111	5.8	36	0	107	61	2	32	293	15.4
00	Chapman, Emily	19-14	505	26.6	92-175	.526	44-103	.427	27-37	.730	12	78	90	4.7	34	0	72	19	6	14	255	13.4
11	Bolender, Isabelle	19-19	472	24.8	95-185	.514	34-84	.405	30-35	.857	8	73	81	4.3	25	0	18	27	6	17	254	13.4
24	Mader, Allison	18-18	409	22.7	58-146	.397	20-53	.377	39-51	.765	18	30	48	2.7	32	0	20	29	3	17	175	9.7
04	Garr, Paige	19-6	383	20.2	55-126	.437	31-74	.419	29-33	.879	6	54	60	3.2	30	0	17	20	1	11	170	8.9
03	Wheeler, Anne	19-0	294	15.5	41-96	.427	20-51	.392	30-33	.909	6	25	31	1.6	38	2	16	10	0	18	132	6.9
44	Moore, Lexi	19-19	383	20.2	32-65	.492	2-4	.500	28-52	.538	40	53	93	4.9	47	1	15	9	9	23	94	4.9
13	Johnting, Stevie	19-0	252	13.3	31-97	.320	28-84	.333	0-0	.000	1	28	29	1.5	19	0	8	2	1	5	90	4.7
20	Marshall, Allie	17-0	308	18.1	35-58	.603	0-0	.000	9-16	.563	23	46	69	4.1	40	1	9	7	4	12	79	4.6
12	Freeman, Abby	16-0	187	11.7	17-42	.405	13-32	.406	5-6	.833	0	18	18	1.1	13	0	13	6	2	1	52	3.3
23	Sweeney, Lydia	12-0	75	6.3	8-31	.258	2-12	.167	0-3	.000	4	4	8	0.7	6	0	7	4	2	6	18	1.5
Team											27	34	61				7					
Total.....		19	3800		564-1234	.457	218-552	.395	266-351	.758	149	550	699	36.8	320	4	302	201	36	156	1612	84.8
Opponents.....		19	3800		464-1154	.402	118-393	.300	260-354	.734	179	551	730	38.4	327	4	222	310	33	99	1306	68.7




Quality Work Since 1962
937-323-2992
www.weldedparts.com



Springfield, Ohio
937-325-8480

Germain
Ford of Beavercreek

Minutes Away,
with an Experience
Miles Above!



BUILT Ford PROUD

SHERIDAN & ASSOCIATES AUCTIONEER, REAL ESTATE BROKER, APPRAISAL, LLC

(937) 767-2021
www.SheridanTeam.com

We back the Jackets all the way




Cedarville's only
Real Estate,
Auction &
Appraisal
Company

No-fee consultations available.

Young's
Jersey Dairy

One mile north
of Yellow Springs
on Route 68



OPEN 7 AM TO 10 PM
EVERY DAY

937-325-0629

2020-21 Kentucky Wesleyan College Basketball Statistics

Overall Record: 12-4 Conf: 12-4 Home: 7-1 Away: 5-3 Neutral: 0-0

#	Player	GP-GS	MIN	AVG	FG		3PT		FT		Rebounds				PF	DQ	A	TO	BLK	STL	PTS	AVG
					FG-FGA	FG%	3FG-FGA	3FG%	FT-FTA	FT%	OFF	DEF	TOT	AVG								
21	Walton, Tahlia	16-0	305	19.1	74-128	.578	6-22	.273	41-63	.651	29	44	73	4.6	31	2	18	30	6	15	195	12.2
23	Clifford, Kaylee	16-16	388	24.3	61-143	.427	41-94	.436	15-22	.682	18	76	94	5.9	14	0	26	14	16	25	178	11.1
22	Nolot, Cali	16-5	327	20.4	56-117	.479	15-44	.341	13-21	.619	22	28	50	3.1	23	0	26	23	3	26	140	8.8
05	Richardson, Leah	16-11	344	21.5	44-107	.411	12-40	.300	22-30	.733	15	19	34	2.1	21	0	29	28	0	15	122	7.6
11	Miller, Lily	15-15	338	22.5	37-80	.463	2-14	.143	33-57	.579	11	28	39	2.6	23	0	62	46	1	16	109	7.3
20	Hoosier, Shiya	15-1	253	16.9	39-82	.476	18-44	.409	14-21	.667	13	26	39	2.6	22	0	29	22	1	27	110	7.3
02	Johnson, Emma	16-0	225	14.1	35-98	.357	18-65	.277	11-16	.688	8	25	33	2.1	14	0	14	22	3	12	99	6.2
12	Barga, Jordyn	16-16	373	23.3	36-86	.419	12-44	.273	13-17	.765	18	55	73	4.6	38	0	21	23	2	20	97	6.1
14	McDonald, Shaylee	16-0	225	14.1	30-67	.448	12-30	.400	7-10	.700	3	19	22	1.4	19	0	17	20	3	6	79	4.9
10	Willis, Kaylee	16-16	289	18.1	25-55	.455	8-24	.333	9-9	1.000	15	30	45	2.8	27	0	23	22	1	15	67	4.2
33	Conley, Corina	15-0	137	9.1	16-35	.457	5-15	.333	4-7	.571	7	20	27	1.8	11	0	7	8	4	7	41	2.7
01	Richardson, Rachel	7-0	35	5.0	2-11	.182	2-9	.222	6-6	1.000	1	1	2	0.3	3	0	3	2	0	0	12	1.7
03	Boyle, Maddy	2-0	11	5.5	1-2	.500	0-1	.000	0-0	.000	1	1	2	1.0	0	0	2	3	0	0	2	1.0
Total		16	3250	203.1	456-1011	.451	151-446	.339	188-279	.674	169	386	555	34.7	246	2	277	268	40	184	1251	78.19
Opponents			3250	203.1	406-930	.437	109-314	.347	164-220	.745	132	385	517	32.3	296	8	245	342	28	132	1085	67.81

#17 Cedarville University "Lady Jackets" (17-2, 17-2)



HEAD COACH: KARI HOFFMAN (5th year, 104-34, .754)
 ASST. COACHES: JOHN LEONZO, STEPHEN BUETTLELL, ABBY WOLFORD, JIMMY HOFFMAN

LocationCedarville, OH Enrollment4,550
 Founded1887 AffiliationNCAA II, NCCAA I

No	Player	Pos	Ht	Yr	Hometown	3-Pt. FG	2-Pt. FG	Free Throws	Fouls	3FG	2FG	FT	TP
0	Emily Chapman	G	5-5	Jr	Proctorville, OH	3333333	22222222222	11111111111	12345				
3	Anne Wheeler	G	5-7	Fr	Cincinnati, OH	3333333	22222222222	11111111111	12345				
4	Paige Garr	G	5-9	So	Goshen, OH	3333333	22222222222	11111111111	12345				
5	Ashlyn Huffman	G	5-6	Sr	Columbus, IN	3333333	22222222222	11111111111	12345				
11	Isabelle Bolender	G	5-9	So	Cedarville, OH	3333333	22222222222	11111111111	12345				
12	Abby Freeman	G	5-6	So	Delta, OH	3333333	22222222222	11111111111	12345				
13	Stevie Johnting	G	5-9	Sr	Arcanum, OH	3333333	22222222222	11111111111	12345				
20	Allie Marshall	F	5-11	So	Proctorville, OH	3333333	22222222222	11111111111	12345				
23	Lydia Sweeney	G	5-8	Fr	Grand Island, NY	3333333	22222222222	11111111111	12345				
24	Allison Mader	G	5-7	Jr	Tipp City, OH	3333333	22222222222	11111111111	12345				
44	Lexi Moore	F	5-10	Jr	Beavercreek, OH	3333333	22222222222	11111111111	12345				
						3333333	22222222222	11111111111	12345				
						3333333	22222222222	11111111111	12345				
						3333333	22222222222	11111111111	12345				
						3333333	22222222222	11111111111	12345				
						3333333	22222222222	11111111111	12345				

OVER 226 YEARS OF EXPERIENCE!

SCREEN Play
 PRINTING EST. 1984
 937-374-2646

1450 South Patton Street
 Xenia, OH 45385
 email: scplay@aol.com
 www.screenplayprinting.com

Germain
 Ford of Beavercreek

Minutes Away,
 with an Experience
 Miles Above!

BUILT Ford PROUD

Hampton Inn

Springfield,
 Ohio
 937-325-8480

Cotterman & Company INC.
 INDUSTRIAL & COMMERCIAL ROOFING

www.CottermanRoofing.com
 Dayton & Minster, Ohio
 937-433-8268

Learn God's Word.
 Live God's Way.
 Light God's World.

GRACE
 BAPTIST CHURCH
 CEDARVILLE, OHIO

www.gracedarville.org

Kentucky Wesleyan College "Panthers" (12-4, 12-4)



CO-HEAD COACHES: CALEB AND NICOLE NIEMAN (10th year, 182-91, .667)
 ASSISTANT COACHES: MARTIN DANIEL, JALANA SCRUGGS

LocationOwensboro, KY Enrollment738
 Founded1858 AffiliationNCAA II

No	Player	Pos	Ht	Yr	Hometown	3-Pt. FG	2-Pt. FG	Free Throws	Fouls	3FG	2FG	FT	TP
1	Rachel Richardson	G	5-5	So	Albany, OH	3333333	22222222222	11111111111	12345				
2	Emma Johnson	F	5-11	Sr	Owensboro, KY	3333333	22222222222	11111111111	12345				
5	Leah Richardson	G	5-7	Jr	Albany, OH	3333333	22222222222	11111111111	12345				
10	Kaylee Willis	G	5-6	Sr	Dixon, KY	3333333	22222222222	11111111111	12345				
11	Lily Miller	G	5-5	Sr	Harned, KY	3333333	22222222222	11111111111	12345				
12	Jordyn Barga	F	5-11	So	Farmland, IN	3333333	22222222222	11111111111	12345				
14	Shaylee McDonald	G	5-7	Fr	Washington Court House, OH	3333333	22222222222	11111111111	12345				
20	Shiya Hoosier	G	5-5	Fr	Hendersonville, TN	3333333	22222222222	11111111111	12345				
21	Tahlia Walton	F	5-11	So	Stanley, WI	3333333	22222222222	11111111111	12345				
22	Cali Nolot	F	5-8	Jr	New Salisbury, IN	3333333	22222222222	11111111111	12345				
23	Kaylee Clifford	G	5-11	Sr	Bedford, KY	3333333	22222222222	11111111111	12345				
33	Corina Conley	G/F	6-0	Fr	Englewood, OH	3333333	22222222222	11111111111	12345				
						3333333	22222222222	11111111111	12345				
						3333333	22222222222	11111111111	12345				
						3333333	22222222222	11111111111	12345				

2020-21 Cedarville University Women's Basketball



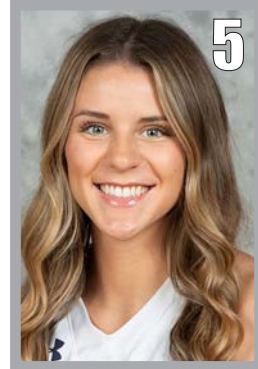
Emily Chapman
5-5, Guard
Junior
Proctorville, OH
[@emily_chapman](#)



Anne Wheeler
5-7, Guard
Freshman
Cincinnati, OH
[@Anne_Wheeler3](#)



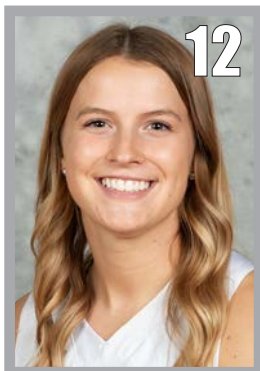
Paige Garr
5-9, Guard
Sophomore
Goshen, OH
[@paigegarr](#)



Ashlyn Huffman
5-6, Guard
Senior
Columbus, IN



Isabelle Bolender
5-9, Guard
Sophomore
Cedarville, OH



Abby Freeman
5-6, Guard
Sophomore
Delta, OH
[@abbyfreeman23](#)



Stevie Johnting
5-9, Guard
Senior
Arcanum, OH
[@Sjohnting](#)



Allie Marshall
5-11, Forward
Sophomore
Proctorville, OH
[@alliemarsha11](#)



Lydia Sweeney
5-8, Guard
Freshman
Grand Island, NY
[@LydiaSweeney02](#)

SUBWAY
eat fresh.
13 E. Chillicothe St.,
Cedarville, OH
→ 766-7299 ←
"We Back the Jackets!"



Allison Mader
5-7, Guard
Junior
Tipp City, OH
[@_allisonmader](#)



Lexi Moore
5-10, Forward
Junior
Beavercreek, OH
[@leximoore](#)

Aqua Falls Fresh Pure Chemical Free Drinking Water
Free Delivery Home & Office
1-800-800-8124
Complimentary Trial Offer
• Cooler & Dispenser
• Sales & Rental
www.aquafallswater.com

CEDARLAND EVENT CENTER
Serving Greene County and Surrounding Areas
200 Parkview Lane, Cedarville (near Hearthstone Inn)
BOOKING EVENTS NOW!
Banquets • Receptions • Parties Meetings • Auctions
Banquet capacity: 225-250
(937) 766-2300

Meeting needs, changing lives
SEND Relief
SendRelief.org
1-833-SENDHOPE
(833)736-3467