

---

Women's Basketball Programs

Women's Basketball

---

2-2-2023

## Cedarville vs. Northwood

Cedarville University

Follow this and additional works at: [https://digitalcommons.cedarville.edu/womens\\_basketball\\_programs](https://digitalcommons.cedarville.edu/womens_basketball_programs)



Part of the [Higher Education Commons](#), and the [Sports Studies Commons](#)

---

### Recommended Citation

Cedarville University, "Cedarville vs. Northwood" (2023). *Women's Basketball Programs*. 536.  
[https://digitalcommons.cedarville.edu/womens\\_basketball\\_programs/536](https://digitalcommons.cedarville.edu/womens_basketball_programs/536)

This Program is brought to you for free and open access by DigitalCommons@Cedarville, a service of the Centennial Library. It has been accepted for inclusion in Women's Basketball Programs by an authorized administrator of DigitalCommons@Cedarville. For more information, please contact [digitalcommons@cedarville.edu](mailto:digitalcommons@cedarville.edu).

# GAMEDAY



**Paige Garr**

Scan the codes for more....

Lady Jacket basketball info



Timberwolves basketball info



G-MAC basketball info



## Play4Kay



**LADY JACKETS  
VS  
NORTHWOOD**



**Germain**  
Ford of Beaver Creek

Minutes Away,  
with an Experience  
Miles Above!



BUILT *Ford* PROUD

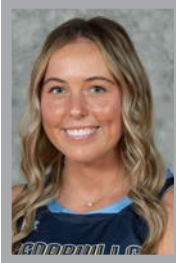


**#CUJACKETS**

**THURSDAY • FEB. 2 • 5:30 PM**

# Lady Jacket BLOG

January 31, 2023



(Editor's Note: This week's Lady Jacket Basketball Blog is written by guest blogger senior Makenna Fee)

Hey everyone!

I'm Makenna Fee, and I'm thrilled to write the blog of the week!



Makenna Fee

Here are some updates from last week. We fell short against two great teams, Hillsdale and Malone, but we were able to learn a lot from those games, and we saw a lot of improvement from the beginning of the year!

The most exciting news from last week is that senior Paige Garr scored her 1,000th career point Thursday night against Hillsdale! She has put in so much work for this team, and we are so proud of her! So, if you see Paige around, make sure to congratulate her!

We are preparing to play the newest addition to our conference, Northwood, on Thursday at 5:30 p.m. at home! Then we travel to Tiffin to play Saturday at 1:00 p.m.

We hope to see you all there! Thanks for your support!

Blessings,

Makenna Fee #13

Paige Garr is a 5-foot-9 senior guard from Goshen, Ohio. She is in her fourth season with the Lady Jackets and is a Dean's Honor List student as a finance major.

**WALLACE & TURNER**  
INSURANCE SINCE 1870

**GRACE**  
BAPTIST CHURCH  
CEDARVILLE, OHIO

Learn God's Word.  
Live God's Way.  
Light God's World.

[www.gracecedarville.org](http://www.gracecedarville.org)

**The Flower Stop**  
floral design - gifts - home decor

[www.flowerstop.com](http://www.flowerstop.com)  
937-372-1436

**AREA WIDE DELIVERY**  
"YOUR ALL OCCASION  
FLORIST"  
57 W. Main St., Downtown Xenia

# 2022-23 Schedule/Results

## Cedarville University "Lady Jackets" (6-12, 4-8)

### November (1-3, 0-0)

|                |                      |                   |                |
|----------------|----------------------|-------------------|----------------|
| <b>Nov. 12</b> | <b>FERRIS STATE</b>  | <b>Cedarville</b> | <b>L 66-76</b> |
| <b>Nov. 16</b> | <b>CENTRAL STATE</b> | <b>Cedarville</b> | <b>W 84-81</b> |
| Nov. 22        | at #10 Drury\$       | Springfield, MO   | L 60-77        |
| Nov. 23        | vs. Truman State\$   | Springfield, MO   | L 63-70        |

### December (2-5, 1-4)

|                |                             |                   |                |
|----------------|-----------------------------|-------------------|----------------|
| <b>Dec. 1</b>  | <b>HILLSDALE*</b>           | <b>Cedarville</b> | <b>W 89-83</b> |
| Dec. 3         | at Lake Erie*               | Painesville, OH   | L 70-75        |
| Dec. 8         | at Trevecca*                | Nashville, TN     | L 61-75        |
| Dec. 10        | at Kentucky Wesleyan*       | Owensboro, KY     | L 65-67        |
| <b>Dec. 15</b> | <b>OHIO DOMINICAN*</b>      | <b>Cedarville</b> | <b>L 81-78</b> |
| <b>Dec. 19</b> | <b>WISCONSIN-PARKSIDE</b>   | <b>Cedarville</b> | <b>L 64-71</b> |
| Dec. 29        | at Dayton (Exhibition)      | Dayton, OH        | L 58-84        |
| <b>Dec. 31</b> | <b>SAGINAW VALLEY STATE</b> | <b>Cedarville</b> | <b>W 71-66</b> |

### January (3-4, 3-4)

|                |                    |                   |                |
|----------------|--------------------|-------------------|----------------|
| Jan. 5         | at #1 Ashland*     | Ashland, OH       | L 60-90        |
| <b>Jan. 7</b>  | <b>FINDLAY*</b>    | <b>Cedarville</b> | <b>W 58-55</b> |
| Jan. 12        | at Ohio Dominican* | Columbus, OH      | W 74-70        |
| <b>Jan. 19</b> | <b>WALSH*</b>      | <b>Cedarville</b> | <b>L 60-71</b> |
| <b>Jan. 21</b> | <b>LAKE ERIE*</b>  | <b>Cedarville</b> | <b>W 83-77</b> |
| Jan. 26        | at Hillsdale*      | Hillsdale, MI     | L 53-68        |
| <b>Jan. 28</b> | <b>MALONE*</b>     | <b>Cedarville</b> | <b>L 72-78</b> |

### February (0-0, 0-0)

|                |                           |                   |                |
|----------------|---------------------------|-------------------|----------------|
| <b>Feb. 2</b>  | <b>NORTHWOOD*</b>         | <b>Cedarville</b> | <b>5:30 PM</b> |
| Feb. 4         | at Tiffin*                | Tiffin, OH        | 1:00 PM        |
| <b>Feb. 7</b>  | <b>URSULINE*</b>          | <b>Cedarville</b> | <b>5:30 PM</b> |
| Feb. 11        | at Malone*                | Canton, OH        | 1:00 PM        |
| <b>Feb. 16</b> | <b>#1 ASHLAND*</b>        | <b>Cedarville</b> | <b>5:30 PM</b> |
| Feb. 18        | at Findlay*               | Findlay, OH       | 1:00 PM        |
| Feb. 23        | at Walsh*                 | N. Canton, OH     | 5:30 PM        |
| <b>Feb. 25</b> | <b>KENTUCKY WESLEYAN*</b> | <b>Cedarville</b> | <b>2:00 PM</b> |
| Feb. 28        | G-MAC Tournament          | at Highest Seed   | TBA            |

### March (0-0, 0-0)

|          |                  |                 |     |
|----------|------------------|-----------------|-----|
| Mar. 3-4 | G-MAC Tournament | at Highest Seed | TBA |
|----------|------------------|-----------------|-----|

### HOME GAMES IN BOLD CAPS

Watch all home games on LIVE VIDEO STREAM via Stretch LIVE and the Great Midwest Digital Network

[yellowjackets.cedarville.edu](http://yellowjackets.cedarville.edu)

All Starting Times Eastern  
\$ Midwest Region Crossover  
\* Great Midwest Athletic Conference



## Comfort Suites



121 Raydo Circle,  
Springfield, OH  
45506

Only 12 miles from CU!

Proud to support  
the Yellow Jackets!!

**937-322-0707**

## 2022-23 Women's Basketball Standings

| (thru 1/31/23)    | G-MAC    |          |             | Overall  |           |             |           |
|-------------------|----------|----------|-------------|----------|-----------|-------------|-----------|
| School            | W        | L        | Pct.        | W        | L         | Pct.        | Streak    |
| Ashland*          | 13       | 0        | 1.000       | 21       | 0         | 1.000       | W21       |
| Kentucky Wesleyan | 12       | 2        | .857        | 16       | 5         | .762        | L1        |
| Trevecca          | 10       | 4        | .714        | 15       | 7         | .682        | W2        |
| Malone            | 9        | 4        | .692        | 15       | 6         | .714        | W1        |
| Ursuline          | 8        | 5        | .615        | 12       | 9         | .572        | W2        |
| Walsh             | 6        | 6        | .500        | 8        | 12        | .400        | L2        |
| Hillsdale         | 6        | 7        | .462        | 13       | 10        | .565        | L1        |
| <b>Northwood</b>  | <b>5</b> | <b>7</b> | <b>.417</b> | <b>8</b> | <b>11</b> | <b>.421</b> | <b>W1</b> |
| <b>Cedarville</b> | <b>4</b> | <b>8</b> | <b>.333</b> | <b>6</b> | <b>12</b> | <b>.333</b> | <b>L2</b> |
| Ohio Dominican    | 3        | 9        | .250        | 6        | 13        | .316        | L2        |
| Lake Erie         | 3        | 10       | .231        | 7        | 12        | .368        | L1        |
| Tiffin            | 2        | 10       | .167        | 5        | 15        | .250        | L6        |
| Findlay           | 2        | 11       | .154        | 5        | 16        | .238        | W1        |

\* Secured berth in the Great Midwest Tournament

### OTHER GAMES IN THE G-MAC TODAY:

Ursuline at Tiffin / 1 PM  
 Trevecca at Walsh / 1 PM  
 Ohio Dominican at Findlay / 1 PM  
 Kentucky Wesleyan at Lake Erie / 1 PM  
 Hillsdale at Northwood / 1 PM



## Inside Scoop

### 2022-23 STAT LEADERS



#### CEDARVILLE

#### LADY JACKETS

Scoring.....Garr, Sweeney / 15.3 ppg  
 Rebounds.....Strock / 6.0 rpg  
 Assists.....Wheeler / 2.9 apg  
 Steals.....Sweeney / 1.9 spg  
 Blocks.....Fee / 1.2 bpg  
 FG%.....Garr / .510  
 3-PT FG%.....Garr / .474  
 FT%.....Garr / .929



#### NORTHWOOD

#### TIMBERWOLVES

Scoring.....Toddn / 15.5 ppg  
 Rebounds.....Voelker / 5.9 rpg  
 Assists.....Taylor / 4.1 apg  
 Steals.....St. John / 2.4 spg  
 Blocks.....Miller / 0.5 bpg  
 FG%.....DiMilia / .465  
 3-PT FG%.....Taylor / .395  
 FT%.....St. John / .909

#### 2022-23 Stat Comparison

|                     | 6-12 (4-8) | 8-11 (5-7) |
|---------------------|------------|------------|
| Current Record      | 6-12 (4-8) | 8-11 (5-7) |
| Points Scored/Game  | 68.4       | 69.6 ✓     |
| Points Allowed/Game | 73.9       | 73.2 ✓     |
| FG %                | .429 ✓     | .404       |
| 3-point FG %        | .351 ✓     | .316       |
| FT %                | .807 ✓     | .794       |
| Rebounds/Game       | 31.5       | 33.2 ✓     |
| Assists/Game        | 13.6       | 14.5 ✓     |
| Turnovers/Game      | 13.2 ✓     | 16.6       |
| Blocked Shots/Game  | 2.9 ✓      | 1.9        |
| Steals/Game         | 6.1        | 9.8 ✓      |
| Current Streak      | L2         | W1 ✓       |



Providing live video streaming of every Lady Jacket home game in 2022-23!

**STRETCH LIVE**

# The Best Care for Athletes

## Kettering HEALTH

Be Your Best



At Kettering Health, we want to see you achieve your best.

That's why our team of sports medicine experts have created programs to help improve your health. From biomechanical analysis of sport-specific movements to customized recovery programs for any injury, we're here to help you reach your full potential.

#### Our Services

- Sports Injury Clinics: Same-day and next-day appointments
- Concussion management
- Preparticipation physicals
- Physical therapy
- Performance enhancement
- Sports nutrition
- Adult fitness

To learn how we help you achieve your best, visit [ketteringhealth.org/sportsmed](http://ketteringhealth.org/sportsmed)

OFFICIAL HEALTHCARE PROVIDER OF THE CINCINNATI BENGALS



# 2022-23 Cedarville University Basketball Statistics

## Game Records

| Record         | Overall | Home | Away | Neutral |
|----------------|---------|------|------|---------|
| ALL GAMES      | 6-12    | 5-5  | 1-6  | 0-1     |
| CONFERENCE     | 4-8     | 3-3  | 1-5  | 0-0     |
| NON-CONFERENCE | 2-4     | 2-2  | 0-1  | 0-1     |

## Score by Periods

| Team       | 1st | 2nd | 3rd | 4th | OT | TOT  |
|------------|-----|-----|-----|-----|----|------|
| Cedarville | 281 | 291 | 313 | 346 | 0  | 1231 |
| Opponents  | 320 | 303 | 362 | 346 | 0  | 1331 |

## Team Box Score

| No.              | Player            |           |             |      | Total           |             |                | 3-Point     |                | F-Throw     |            | Rebounds   |            |             |            |          |            |            |           |            |             |             |
|------------------|-------------------|-----------|-------------|------|-----------------|-------------|----------------|-------------|----------------|-------------|------------|------------|------------|-------------|------------|----------|------------|------------|-----------|------------|-------------|-------------|
|                  |                   | GP-GS     | MIN         | AVG  | FG-FGA          | FG%         | 3FG-3FGA       | 3FG%        | FT-FTA         | FT%         | OFF        | DEF        | TOT        | AVG         | PF         | DQ       | A          | TO         | BLK       | STL        | PTS         | AVG         |
| 23               | SWEENEY, Lydia    | 18-18     | 584:25      | 32.5 | 106-216         | .491        | 25-63          | .397        | 39-46          | .848        | 26         | 52         | 78         | 4.3         | 35         | 2        | 50         | 31         | 12        | 34         | 276         | 15.3        |
| 4                | GARR, Paige       | 18-18     | 590:23      | 32.8 | 100-196         | .510        | 36-76          | .474        | 39-42          | .929        | 5          | 45         | 50         | 2.8         | 22         | 0        | 42         | 38         | 4         | 15         | 275         | 15.3        |
| 3                | WHEELER, Anne     | 18-18     | 536:19      | 29.8 | 53-152          | .349        | 23-73          | .315        | 36-48          | .750        | 4          | 57         | 61         | 3.4         | 44         | 0        | 52         | 44         | 0         | 12         | 165         | 9.2         |
| 5                | STROCK, Taylor    | 8-8       | 211:13      | 26.4 | 22-61           | .361        | 6-22           | .273        | 7-10           | .700        | 10         | 38         | 48         | 6.0         | 13         | 0        | 5          | 11         | 0         | 7          | 57          | 7.1         |
| 13               | FEE, Makenna      | 18-17     | 467:31      | 26.0 | 49-119          | .412        | 13-47          | .277        | 10-10          | 1.000       | 13         | 76         | 89         | 4.9         | 45         | 0        | 25         | 19         | 21        | 12         | 121         | 6.7         |
| 34               | WEAKLEY, Kat      | 18-5      | 312:46      | 17.4 | 42-106          | .396        | 17-53          | .321        | 15-21          | .714        | 10         | 36         | 46         | 2.6         | 19         | 0        | 13         | 19         | 3         | 8          | 116         | 6.4         |
| 2                | STACY, Taylor     | 16-0      | 149:09      | 9.3  | 20-55           | .364        | 17-48          | .354        | 3-4            | .750        | 1          | 12         | 13         | 0.8         | 7          | 0        | 7          | 7          | 0         | 3          | 60          | 3.8         |
| 44               | NEELY, Evan       | 16-0      | 166:18      | 10.4 | 20-45           | .444        | 0-0            | .000        | 10-14          | .714        | 5          | 15         | 20         | 1.3         | 23         | 0        | 3          | 11         | 3         | 5          | 50          | 3.1         |
| 12               | FREEMAN, Abby     | 18-6      | 299:52      | 16.7 | 18-45           | .400        | 12-31          | .387        | 5-8            | .625        | 4          | 33         | 37         | 2.1         | 18         | 0        | 20         | 20         | 3         | 6          | 53          | 2.9         |
| 10               | BUTTERBAUGH, Leah | 18-0      | 229:04      | 12.7 | 17-49           | .347        | 1-14           | .071        | 4-6            | .667        | 7          | 26         | 33         | 1.8         | 23         | 0        | 24         | 23         | 5         | 8          | 39          | 2.2         |
| 33               | LANDING, Anna     | 7-0       | 37:47       | 5.4  | 4-12            | .333        | 0-0            | .000        | 2-2            | 1.000       | 6          | 4          | 10         | 1.4         | 0          | 0        | 3          | 1          | 1         | 0          | 10          | 1.4         |
| 30               | BOIKE, Ava        | 7-0       | 15:12       | 2.2  | 4-5             | .800        | 0-0            | .000        | 1-1            | 1.000       | 2          | 1          | 3          | 0.4         | 6          | 0        | 0          | 0          | 0         | 0          | 9           | 1.3         |
| Team             |                   |           |             |      |                 |             |                |             |                |             | 22         | 57         | 79         |             |            |          | 14         |            |           |            |             |             |
| <b>Total</b>     |                   | <b>18</b> | <b>3600</b> |      | <b>455-1061</b> | <b>.429</b> | <b>150-427</b> | <b>.351</b> | <b>171-212</b> | <b>.807</b> | <b>115</b> | <b>452</b> | <b>567</b> | <b>31.5</b> | <b>255</b> | <b>2</b> | <b>244</b> | <b>238</b> | <b>52</b> | <b>110</b> | <b>1231</b> | <b>68.4</b> |
| <b>Opponents</b> |                   | <b>18</b> | <b>3600</b> |      | <b>494-1096</b> | <b>.451</b> | <b>157-424</b> | <b>.370</b> | <b>186-243</b> | <b>.765</b> | <b>172</b> | <b>501</b> | <b>673</b> | <b>37.4</b> | <b>231</b> | <b>2</b> | <b>268</b> | <b>230</b> | <b>32</b> | <b>132</b> | <b>1331</b> | <b>73.9</b> |



10 S. Main Street Cedarville  
937-766-3000  
TripAdvisor Certificate of Excellence



One mile north of Yellow Springs on Route 68  
OPEN 7 AM TO 10 PM EVERY DAY  
**937-325-0629**

# 2022-23 Northwood University Basketball Statistics

## Game Records

| Record         | Overall | Home | Away | Neutral |
|----------------|---------|------|------|---------|
| ALL GAMES      | 8-11    | 6-4  | 2-7  | 0-0     |
| CONFERENCE     | 5-7     | 3-3  | 2-4  | 0-0     |
| NON-CONFERENCE | 3-4     | 3-1  | 0-3  | 0-0     |

## Score by Periods

| Team      | 1st | 2nd | 3rd | 4th | OT | TOT  |
|-----------|-----|-----|-----|-----|----|------|
| Northwood | 327 | 298 | 336 | 361 | 0  | 1322 |
| Opponents | 323 | 345 | 365 | 357 | 0  | 1390 |

## Team Box Score

| No.              | Player            |           |             |      | Total           |             |                | 3-Point     |                | F-Throw     |            | Rebounds   |            |             |            |          |            |            |           |            |             |             |
|------------------|-------------------|-----------|-------------|------|-----------------|-------------|----------------|-------------|----------------|-------------|------------|------------|------------|-------------|------------|----------|------------|------------|-----------|------------|-------------|-------------|
|                  |                   | GP-GS     | MIN         | AVG  | FG-FGA          | FG%         | 3FG-3FGA       | 3FG%        | FT-FTA         | FT%         | OFF        | DEF        | TOT        | AVG         | PF         | DQ       | A          | TO         | BLK       | STL        | PTS         | AVG         |
| 3                | TODD, Makenzie    | 18-18     | 517:39      | 28.8 | 107-250         | .428        | 34-115         | .296        | 31-36          | .861        | 12         | 18         | 30         | 1.7         | 19         | 0        | 29         | 30         | 1         | 15         | 279         | 15.5        |
| 25               | VOELKER, Maddie   | 19-19     | 512:60      | 27.0 | 59-163          | .362        | 18-55          | .327        | 73-85          | .859        | 32         | 80         | 112        | 5.9         | 35         | 0        | 22         | 46         | 5         | 21         | 209         | 11.0        |
| 22               | DIMILIA, Ava      | 19-19     | 434:55      | 22.9 | 72-155          | .465        | 4-17           | .235        | 17-34          | .500        | 41         | 52         | 93         | 4.9         | 60         | 1        | 24         | 38         | 7         | 19         | 165         | 8.7         |
| 4                | KEYSER, Alli      | 3-3       | 51:11       | 17.1 | 8-21            | .381        | 2-9            | .222        | 6-10           | .600        | 1          | 7          | 8          | 2.7         | 3          | 0        | 9          | 6          | 0         | 1          | 24          | 8.0         |
| 31               | KEMP, Adele       | 19-16     | 514:29      | 27.1 | 44-120          | .367        | 22-67          | .328        | 37-45          | .822        | 12         | 47         | 59         | 3.1         | 34         | 1        | 34         | 25         | 0         | 26         | 147         | 7.7         |
| 21               | TAYLOR, Maizie    | 19-19     | 534:01      | 28.1 | 50-122          | .410        | 15-38          | .395        | 16-21          | .762        | 24         | 53         | 77         | 4.1         | 26         | 0        | 78         | 50         | 0         | 30         | 131         | 6.9         |
| 13               | ST. JOHN, Maeve   | 19-0      | 342:48      | 18.0 | 38-101          | .376        | 14-47          | .298        | 40-44          | .909        | 11         | 36         | 47         | 2.5         | 49         | 1        | 35         | 58         | 8         | 46         | 130         | 6.8         |
| 34               | WALKER, McKenna   | 19-1      | 290:39      | 15.3 | 41-97           | .423        | 16-50          | .320        | 22-27          | .815        | 8          | 42         | 50         | 2.6         | 23         | 0        | 18         | 18         | 1         | 15         | 120         | 6.3         |
| 33               | MILLER, Ella      | 17-0      | 205:48      | 12.1 | 19-48           | .396        | 5-13           | .385        | 6-6            | 1.000       | 8          | 27         | 35         | 2.1         | 22         | 0        | 11         | 10         | 8         | 5          | 49          | 2.9         |
| 11               | TROMBLY, Emma     | 12-0      | 142:11      | 11.8 | 15-41           | .366        | 1-6            | .167        | 3-7            | .429        | 7          | 12         | 19         | 1.6         | 15         | 1        | 2          | 12         | 4         | 2          | 34          | 2.8         |
| 5                | SCHROEDER, Hannah | 10-0      | 184:58      | 18.5 | 6-19            | .316        | 4-11           | .364        | 7-8            | .875        | 3          | 8          | 11         | 1.1         | 16         | 0        | 10         | 12         | 3         | 5          | 23          | 2.3         |
| 12               | MUSCHONG, Ava     | 8-0       | 22:30       | 2.8  | 1-4             | .250        | 1-3            | .333        | 1-3            | .333        | 2          | 3          | 5          | 0.6         | 2          | 0        | 1          | 4          | 0         | 0          | 4           | 0.5         |
| 15               | MCCRUM, Carly     | 10-0      | 23:35       | 2.4  | 2-2             | 1.000       | 1-1            | 1.000       | 0-0            | .000        | 0          | 2          | 2          | 0.2         | 3          | 0        | 1          | 1          | 0         | 1          | 5           | 0.5         |
| 23               | LAUINGER, Raegan  | 9-0       | 22:15       | 2.5  | 1-4             | .250        | 0-2            | .000        | 0-0            | .000        | 1          | 1          | 2          | 0.2         | 1          | 0        | 1          | 1          | 0         | 1          | 2           | 0.2         |
| Team             |                   |           |             |      |                 |             |                |             |                |             | 36         | 45         | 81         |             |            |          | 5          |            |           |            |             |             |
| <b>Total</b>     |                   | <b>19</b> | <b>3800</b> |      | <b>463-1147</b> | <b>.404</b> | <b>137-434</b> | <b>.316</b> | <b>259-326</b> | <b>.794</b> | <b>198</b> | <b>433</b> | <b>631</b> | <b>33.2</b> | <b>308</b> | <b>4</b> | <b>275</b> | <b>316</b> | <b>37</b> | <b>187</b> | <b>1322</b> | <b>69.6</b> |
| <b>Opponents</b> |                   | <b>19</b> | <b>3800</b> |      | <b>508-1163</b> | <b>.437</b> | <b>160-475</b> | <b>.337</b> | <b>214-295</b> | <b>.725</b> | <b>251</b> | <b>516</b> | <b>767</b> | <b>40.4</b> | <b>328</b> | <b>3</b> | <b>320</b> | <b>373</b> | <b>42</b> | <b>140</b> | <b>1390</b> | <b>73.2</b> |

# Cedarville University "Lady Jackets" (6-12, 4-8)

HEAD COACH: JASON SMITH (2nd year, 23-24, .489)  
 ASST. COACHES: ALYSSA STRICKLAND, STEPHEN BUETTELL

Location .....Cedarville, OH Enrollment .....5,082  
 Founded .....1887 Affiliation .....NCAA II, NCCAA I



| No | Player           | Pos | Ht   | Yr | Hometown         | 3-Pt. FG | 2-Pt. FG    | Free Throws | Fouls | 3FG | 2FG | FT | TP |
|----|------------------|-----|------|----|------------------|----------|-------------|-------------|-------|-----|-----|----|----|
| 0  | Lily Moore       | G   | 5-10 | Fr | Corydon, IN      | 3333333  | 22222222222 | 11111111111 | 12345 |     |     |    |    |
| 3  | Anne Wheeler     | G   | 5-6  | Jr | Cincinnati, OH   | 3333333  | 22222222222 | 11111111111 | 12345 |     |     |    |    |
| 4  | Paige Garr       | G   | 5-9  | Sr | Goshen, OH       | 3333333  | 22222222222 | 11111111111 | 12345 |     |     |    |    |
| 5  | Taylor Strock    | G   | 5-8  | So | Napoleon, OH     | 3333333  | 22222222222 | 11111111111 | 12345 |     |     |    |    |
| 10 | Leah Butterbaugh | G   | 5-8  | So | Waynesville, OH  | 3333333  | 22222222222 | 11111111111 | 12345 |     |     |    |    |
| 12 | Abby Freeman     | G   | 5-6  | Sr | Delta, OH        | 3333333  | 22222222222 | 11111111111 | 12345 |     |     |    |    |
| 13 | Makenna Fee      | F   | 6-0  | Sr | Seymour, IN      | 3333333  | 22222222222 | 11111111111 | 12345 |     |     |    |    |
| 14 | Taylor Stacy     | G   | 5-7  | So | Toledo, OH       | 3333333  | 22222222222 | 11111111111 | 12345 |     |     |    |    |
| 21 | Kat Weakley      | G   | 5-9  | So | Westerville, OH  | 3333333  | 22222222222 | 11111111111 | 12345 |     |     |    |    |
| 23 | Lydia Sweeney    | G   | 5-8  | Jr | Grand Island, NY | 3333333  | 22222222222 | 11111111111 | 12345 |     |     |    |    |
| 30 | Ava Boike        | F   | 5-11 | Fr | Flint, MI        | 3333333  | 22222222222 | 11111111111 | 12345 |     |     |    |    |
| 33 | Anna Landing     | C   | 6-1  | So | Beavercreek, OH  | 3333333  | 22222222222 | 11111111111 | 12345 |     |     |    |    |
| 44 | Evan Neely       | F   | 6-0  | Fr | Dayton, OH       | 3333333  | 22222222222 | 11111111111 | 12345 |     |     |    |    |
|    |                  |     |      |    |                  | 3333333  | 22222222222 | 11111111111 | 12345 |     |     |    |    |
|    |                  |     |      |    |                  | 3333333  | 22222222222 | 11111111111 | 12345 |     |     |    |    |
|    |                  |     |      |    |                  | 3333333  | 22222222222 | 11111111111 | 12345 |     |     |    |    |

**COURTYARD**<sup>®</sup> 100 south fountain  
 downtown springfield  
**Marriott**  
 937.322.3600  
[www.melaurbanbistro.com](http://www.melaurbanbistro.com)

**GenSend**  
 Live Life on Mission  
 Influence a Broken World with the  
 Life-Giving Gospel

# Northwood University "Timberwolves" (8-11, 5-7)

HEAD COACH: AUTUMN HAGGADONE (2nd year, 26-21, .553)  
 ASSISTANT COACHES: ABBY NAKFOOR, JAKE VOELKER, JASON KEEFER

Location .....Midland, MI Enrollment .....2,800  
 Founded .....1959 Affiliation .....NCAA II



| No | Player           | Pos | Ht   | Yr | Hometown         | 3-Pt. FG | 2-Pt. FG    | Free Throws | Fouls | 3FG | 2FG | FT | TP |
|----|------------------|-----|------|----|------------------|----------|-------------|-------------|-------|-----|-----|----|----|
| 3  | Makenzie Todd    | G   | 5-6  | Jr | Grand Ledge, MI  | 3333333  | 22222222222 | 11111111111 | 12345 |     |     |    |    |
| 4  | Alli Keyser      | G   | 5-8  | Jr | Spring Lake, MI  | 3333333  | 22222222222 | 11111111111 | 12345 |     |     |    |    |
| 5  | Hannah Schroeder | G   | 5-9  | Fr | Allendale, MI    | 3333333  | 22222222222 | 11111111111 | 12345 |     |     |    |    |
| 11 | Emma Trombly     | F   | 6-2  | Fr | Port Huron, MI   | 3333333  | 22222222222 | 11111111111 | 12345 |     |     |    |    |
| 12 | Ava Muschong     | F/G | 5-9  | So | Romeo, MI        | 3333333  | 22222222222 | 11111111111 | 12345 |     |     |    |    |
| 13 | Maeve St. John   | G   | 5-7  | Fr | Howell, MI       | 3333333  | 22222222222 | 11111111111 | 12345 |     |     |    |    |
| 15 | Carly McCrum     | F   | 5-10 | Fr | Bay City, MI     | 3333333  | 22222222222 | 11111111111 | 12345 |     |     |    |    |
| 21 | Maizie Taylor    | G   | 5-8  | Jr | Midland, MI      | 3333333  | 22222222222 | 11111111111 | 12345 |     |     |    |    |
| 22 | Ava DiMilia      | F   | 5-11 | Jr | New Boston, MI   | 3333333  | 22222222222 | 11111111111 | 12345 |     |     |    |    |
| 23 | Raegan Lauinger  | G   | 5-10 | Jr | Goodrich, MI     | 3333333  | 22222222222 | 11111111111 | 12345 |     |     |    |    |
| 25 | Maddie Voelker   | F   | 5-9  | So | Goodrich, MI     | 3333333  | 22222222222 | 11111111111 | 12345 |     |     |    |    |
| 31 | Adele Kemp       | F/G | 5-10 | Jr | Greenville, MI   | 3333333  | 22222222222 | 11111111111 | 12345 |     |     |    |    |
| 33 | Ella Miller      | C/F | 6-1  | Fr | East Lansing, MI | 3333333  | 22222222222 | 11111111111 | 12345 |     |     |    |    |
| 34 | McKenna Walker   | G   | 5-9  | Sr | Auburn, MI       | 3333333  | 22222222222 | 11111111111 | 12345 |     |     |    |    |
| 44 | Jayla Strickland | C   | 6-2  | Sr | Big Rapids, MI   | 3333333  | 22222222222 | 11111111111 | 12345 |     |     |    |    |

# Career Top 10 Leaders

(thru 1/28/23)

## Points

|       |                                    |
|-------|------------------------------------|
| 3,236 | Brittany Smart, 2003-07            |
| 2,275 | Kari Flunker, 2001-05              |
| 2,229 | Kirsten Rossotti, 1998-2000, 01-03 |
| 2,103 | Vicki Butler, 1976-80              |
| 1,825 | Kayla Jenerette, 2010-14           |
| 1,760 | Diane Rank, 1988-92                |
| 1,758 | Alison Lemon, 2006-10              |
| 1,706 | Julie Nourse, 1997-2001            |
| 1,678 | Melissa Hartman, 1992-96           |
| 1,656 | Julie Stauffer, 2000-04            |

## Scoring Average

|      |                                    |
|------|------------------------------------|
| 22.8 | Brittany Smart, 2003-07            |
| 22.1 | Vicki Butler, 1976-80              |
| 17.0 | Kirsten Rossotti, 1998-2000, 01-03 |
| 16.1 | Diane Rank, 1988-92                |
| 16.0 | Kari Flunker, 2001-05              |
| 15.9 | Lynn Strickland, 1987-89           |
| 15.6 | Amy Zehr, 1989-93                  |
| 15.0 | Kayla Jenerette, 2010-14           |
| 14.9 | Chris Friesen, 1985-89             |
| 14.1 | Julie Nourse, 1997-2001            |

## Field Goals Made

|       |                                    |
|-------|------------------------------------|
| 1,180 | Brittany Smart, 2003-06            |
| 808   | Kari Flunker, 2001-05              |
| 806   | Vicki Butler, 1976-80              |
| 776   | Kirsten Rossotti, 1998-2000, 01-03 |
| 703   | Diane Rank, 1988-92                |
| 676   | Julie Nourse, 1997-2001            |
| 663   | Amy Zehr, 1989-93                  |
| 612   | Alison Lemon, 2006-10              |
| 609   | Kayla Jenerette, 2010-14           |
| 603   | Melissa Hartman, 1992-96           |

## Field Goal Pct. (4 FGM/G)

|      |   |
|------|---|
| .603 | Lisa Campbell (207-343), 1982-84              |
| .591 | Breanne Watterworth (482-815), 2014-18        |
| .570 | Amy Zehr (663-1163), 1989-93                  |
| .550 | Kayla Linkous (459-834), 2012-16              |
| .531 | Julie Nourse (676-1272), 1997-2001            |
| .524 | Brittany Smart (1180-2250), 2003-07           |
| .517 | Kirsten Rossotti (776-1500), 1998-2000, 01-03 |
| .516 | Diane Rank (703-1362), 1988-92                |
| .516 | Emily Delimpo (596-1155), 2002-06             |
| .512 | Aubrey Siemon (539-1053), 2007-11             |

## 3-Point Field Goals Made

|     |                             |
|-----|-----------------------------|
| 338 | Kari Flunker, 2001-05       |
| 285 | Baylee Bennett, 2016-19     |
| 268 | Kayla Jenerette, 2010-14    |
| 245 | Brittany Smart, 2003-07     |
| 231 | Kara Cayton, 2008-12        |
| 221 | Rachel Hurley, 2007-11      |
| 214 | Julie Stauffer, 2000-04     |
| 209 | Raegan Ryan, 2011-15        |
| 206 | Alison Lemon, 2006-10       |
| 205 | Regina Hochstetler, 2014-19 |

## 3-Point Field Goal Pct. (0.5 FGM/G)

|      |                                     |
|------|-------------------------------------|
| .458 | Kari Flunker (338-738), 2001-05     |
| .450 | Baylee Bennett (285-633), 2016-19   |
| .439 | Crystal Patrick (43-98), 1984-88    |
| .430 | Kayla Jenerette (268-623), 2010-14  |
| .412 | Brittany Smart (245-595), 2003-07   |
| .404 | Raegan Ryan (209-517), 2011-15      |
| .397 | Ashlyn Huffman (104-262), 2017-21   |
| .396 | Stevie Johning (146-369), 2017-21   |
| .394 | Isabelle Bolender (80-203), 2019-22 |
| .393 | Emily Chapman (130-331), 2018-22    |

## Free Throws Made

|     |                                    |
|-----|------------------------------------|
| 669 | Kirsten Rossotti, 1998-2000, 01-03 |
| 631 | Brittany Smart, 2003-07            |
| 491 | Vicki Butler, 1976-80              |
| 463 | Aubrey Siemon, 2007-11             |
| 365 | Kayla Linkous, 2012-16             |
| 363 | Emily Delimpo, 2002-06             |
| 354 | Diane Rank, 1988-92                |
| 354 | Julie Nourse, 1997-2001            |
| 339 | Kayla Jenerette, 2010-14           |
| 328 | Alison Lemon, 2006-10              |

## Free Throw Pct. (2 FTM/G)

|      |  |
|------|--|
| .846 | Regina Hochstetler (225-266), 2014-19  |
| .837 | Brittany Smart (631-754), 2003-07      |
| .820 | Raegan Ryan (305-372), 2011-15         |
| .820 | Ashlyn Huffman (255-311), 2017-21      |
| .813 | Kari Flunker (321-395), 2001-05        |
| .804 | Aubrey Siemon (463-576), 2007-11       |
| .800 | Kayla Jenerette (339-424), 2010-14     |
| .773 | Abby Wolford (262-389), 2014-16, 18-20 |
| .763 | Melissa Hartman (318-417), 1992-96     |
| .756 | Julie Stauffer (270-357), 2000-04      |
| .756 | Kayla Linkous (365-483), 2012-16       |

## Rebounds

|       |                                    |
|-------|------------------------------------|
| 1,362 | Aubrey Siemon, 2007-11             |
| 1,159 | Kirsten Rossotti, 1998-2000, 01-03 |
| 1,074 | Emily Delimpo, 2002-06             |
| 1,049 | Amy Zehr, 1989-93                  |
| 951   | Diane Rank, 1988-92                |
| 944   | Brittany Smart, 2003-07            |
| 919   | Chris Friesen, 1985-89             |
| 918   | Julie Nourse, 1997-2001            |
| 908   | Christine Copeland, 1991-95        |
| 908   | Kristi Beougher, 2003-07           |

## Assists

|     |                          |
|-----|--------------------------|
| 644 | Kari Flunker, 2001-05    |
| 545 | Brittany Smart, 2003-07  |
| 519 | Raegan Ryan, 2011-15     |
| 513 | Karah Walton, 2003-07    |
| 512 | Ashlyn Huffman, 2017-21  |
| 477 | Alison Lemon, 2006-10    |
| 467 | Julie Stauffer, 2000-04  |
| 456 | Melissa Hartman, 1992-96 |
| 398 | Heather French, 1995-99  |
| 368 | Kayla Jenerette, 2010-14 |

## Blocks

|     |                                    |
|-----|------------------------------------|
| 172 | Becky Cave, 1992-96                |
| 158 | Aubrey Siemon, 2007-11             |
| 149 | Diane Rank, 1988-92                |
| 139 | Breanne Watterworth, 2014-18       |
| 129 | Kirsten Rossotti, 1998-2000, 01-03 |
| 88  | Molly Earley, 2000-04              |
| 84  | Danielle Spiliotis, 2009-10, 11-14 |
| 83  | Emily Williams, 2014-18            |
| 75  | Heidi Peterson, 1980-84            |
| 67  | Karah Walton, 2003-07              |

## Steals

|     |                          |
|-----|--------------------------|
| 345 | Brittany Smart, 2003-07  |
| 331 | Kari Flunker, 2001-05    |
| 293 | Melissa Hartman, 1992-96 |
| 252 | Alison Lemon, 2006-10    |
| 250 | Karah Walton, 2003-07    |
| 230 | Amanda Porter, 1997-2001 |
| 214 | Cindy Cremeans, 1994-96  |
| 205 | Raegan Ryan, 2011-15     |
| 184 | Amy Zehr, 1989-93        |
| 180 | Kayla Jenerette, 2010-14 |

# All-Time Series Records

(thru 1/28/23)

|                          | W         | L         |                             | W          | L         |
|--------------------------|-----------|-----------|-----------------------------|------------|-----------|
| Adelphi                  | 1         | 0         | Marian                      | 1          | 1         |
| Akron                    | 3         | 3         | Marshall                    | 0          | 2         |
| Alaska Anchorage         | 0         | 1         | Masters                     | 0          | 1         |
| Alaska Fairbanks         | 1         | 0         | Mercyhurst                  | 1          | 0         |
| Albany Pharmacy          | 1         | 0         | Miami                       | 3          | 5         |
| Alderson Broaddus        | 15        | 0         | Miami Valley Hospital       | 4          | 1         |
| Alumnae                  | 6         | 0         | Michigan Christian          | 0          | 1         |
| Anderson                 | 1         | 0         | Michigan-Dearborn           | 1          | 1         |
| Antioch                  | 1         | 0         | Michigan Tech               | 0          | 1         |
| <b>Ashland</b>           | <b>11</b> | <b>20</b> | MidAmerica Nazarene         | 0          | 2         |
| Azusa Pacific            | 0         | 1         | Midwestern State            | 0          | 1         |
| Ball State               | 0         | 1         | Morehead State              | 0          | 2         |
| Baptist Bible            | 1         | 0         | Morningside                 | 2          | 2         |
| Bartlesville Wesleyan    | 0         | 1         | Mount Carmel                | 1          | 0         |
| Bellarmino               | 3         | 1         | Mount St. Joseph            | 16         | 18        |
| Bethel IN                | 3         | 2         | Mount Vernon Nazarene       | 40         | 15        |
| Bluefield State          | 2         | 0         | National Cash Register      | 0          | 3         |
| Bluffton                 | 14        | 20        | Northern Kentucky           | 0          | 2         |
| Bowling Green            | 1         | 6         | Northwest Indian            | 1          | 0         |
| Brewton Parker           | 0         | 1         | Northwestern IA             | 0          | 1         |
| Briar Cliff              | 0         | 1         | Northwestern Ohio           | 5          | 0         |
| Bryan                    | 3         | 0         | Northwood FL                | 2          | 0         |
| California Baptist       | 1         | 0         | <b>Northwood MI</b>         | <b>1</b>   | <b>0</b>  |
| Capital                  | 9         | 3         | Notre Dame IN               | 0          | 1         |
| Cardinal Stritch         | 1         | 0         | Notre Dame OH               | 12         | 4         |
| Carlow                   | 4         | 0         | Nyack                       | 1          | 0         |
| <b>Central State</b>     | <b>28</b> | <b>17</b> | Oakland City                | 6          | 2         |
| Charleston WV            | 0         | 1         | Ohio                        | 3          | 5         |
| Christian Brothers       | 1         | 0         | Ohio Christian              | 6          | 0         |
| Cincinnati               | 6         | 4         | <b>Ohio Dominican</b>       | <b>40</b>  | <b>30</b> |
| Cincinnati Christian     | 1         | 0         | Ohio Northern               | 6          | 4         |
| Cleveland State          | 1         | 0         | Ohio State                  | 0          | 7         |
| Collegiate               | 0         | 1         | Ohio Valley                 | 14         | 0         |
| Colorado Christian       | 1         | 1         | Ohio Wesleyan               | 7          | 2         |
| Concordia MI             | 9         | 1         | Ohio-Belmont                | 1          | 0         |
| Concordia NE             | 2         | 0         | Ohio-Chillicothe            | 2          | 0         |
| Concordia NY             | 1         | 1         | Oklahoma Christian          | 0          | 1         |
| Daemen                   | 8         | 2         | Olivet Nazarene             | 1          | 4         |
| Davenport                | 0         | 1         | Otterbein                   | 1          | 1         |
| Davis & Elkins           | 11        | 2         | Ozarks                      | 3          | 0         |
| Dayton                   | 7         | 14        | Point Park                  | 10         | 0         |
| Defiance                 | 8         | 19        | Queens                      | 0          | 1         |
| Denison                  | 3         | 1         | Quincy                      | 1          | 0         |
| <b>Drury</b>             | <b>0</b>  | <b>1</b>  | Rio Grande                  | 15         | 30        |
| Dyke                     | 0         | 3         | Roberts Wesleyan            | 8          | 3         |
| Earlham                  | 4         | 0         | Rollins                     | 0          | 1         |
| Eastern Illinois         | 0         | 1         | <b>Saginaw Valley State</b> | <b>2</b>   | <b>0</b>  |
| Eckerd                   | 1         | 0         | Saint Ambrose               | 1          | 0         |
| Embry-Riddle             | 1         | 0         | Saint Francis IL            | 1          | 0         |
| Emmanuel                 | 0         | 1         | Saint Francis IN            | 6          | 3         |
| Evangel                  | 0         | 2         | Saint Joseph's IN           | 1          | 0         |
| <b>Ferris State</b>      | <b>3</b>  | <b>1</b>  | Saint Vincent               | 3          | 5         |
| <b>Findlay</b>           | <b>13</b> | <b>30</b> | Salem International         | 12         | 0         |
| Finlandia                | 1         | 0         | Seton Hill                  | 3          | 1         |
| Florida Southern         | 0         | 1         | Shawnee State               | 15         | 25        |
| Florida Tech             | 0         | 1         | Shorter                     | 1          | 0         |
| Franklin                 | 0         | 1         | Siena Heights               | 2          | 0         |
| Fresno Pacific           | 1         | 0         | Sioux Falls                 | 0          | 1         |
| Geneva                   | 8         | 1         | Southern Indiana            | 1          | 1         |
| Georgetown               | 3         | 9         | Spring Arbor                | 4          | 7         |
| Glenville State          | 0         | 1         | Springfield City Hospital   | 1          | 0         |
| Goshen                   | 2         | 0         | St. Elizabeth               | 3          | 0         |
| Grace                    | 12        | 4         | St. Marys                   | 0          | 1         |
| Grand Rapids Baptist     | 2         | 0         | SUNY-Cortland               | 0          | 1         |
| Greenville               | 1         | 0         | Tarleton State              | 0          | 1         |
| Grove City               | 1         | 0         | Taylor                      | 22         | 10        |
| Hanover                  | 3         | 0         | Tennessee Temple            | 2          | 0         |
| Hastings                 | 1         | 0         | Thomas More                 | 6          | 0         |
| Heidelberg               | 1         | 1         | <b>Tiffin</b>               | <b>34</b>  | <b>19</b> |
| <b>Hillsdale</b>         | <b>9</b>  | <b>6</b>  | Transylvania                | 2          | 5         |
| Hope International       | 1         | 0         | <b>Trevecca Nazarene</b>    | <b>17</b>  | <b>4</b>  |
| Houghton                 | 5         | 0         | Trinity                     | 1          | 0         |
| Huntington               | 7         | 6         | Trinity Christian           | 3          | 1         |
| Indiana                  | 0         | 1         | <b>Truman State</b>         | <b>0</b>   | <b>1</b>  |
| Indiana PA               | 0         | 1         | Union KY                    | 1          | 0         |
| <b>Indianapolis</b>      | <b>5</b>  | <b>4</b>  | Urbana                      | 40         | 28        |
| Indiana State            | 0         | 2         | <b>Ursuline</b>             | <b>26</b>  | <b>5</b>  |
| Indiana Tech             | 2         | 1         | Vanguard                    | 0          | 1         |
| Indiana Wesleyan         | 6         | 11        | Virginia-Wise               | 1          | 0         |
| Indiana-South Bend       | 2         | 1         | <b>Walsh</b>                | <b>22</b>  | <b>25</b> |
| Iowa Wesleyan            | 0         | 1         | Warner Southern             | 1          | 0         |
| John Brown               | 0         | 1         | Wayne State                 | 0          | 4         |
| John Carroll             | 1         | 0         | Webber International        | 2          | 0         |
| Judson                   | 1         | 0         | West Liberty                | 1          | 0         |
| Kendall                  | 1         | 0         | West Virginia Tech          | 1          | 0         |
| Kent State               | 0         | 1         | West Virginia Wesleyan      | 0          | 2         |
| Kentucky Christian       | 2         | 1         | Western                     | 1          | 0         |
| <b>Kentucky Wesleyan</b> | <b>10</b> | <b>12</b> | Western Baptist             | 0          | 1         |
| Kenyon                   | 6         | 1         | Western Michigan            | 1          | 1         |
| King                     | 1         | 1         | Wheeling Jesuit             | 1          | 0         |
| <b>Lake Erie</b>         | <b>16</b> | <b>1</b>  | Wilberforce                 | 45         | 2         |
| Lake Superior State      | 1         | 0         | Wilmington                  | 32         | 18        |
| Lee                      | 2         | 0         | Wisconsin-LaCrosse          | 1          | 0         |
| Liberty                  | 0         | 2         | <b>Wisconsin-Parkside</b>   | <b>1</b>   | <b>1</b>  |
| Lindsey Wilson           | 2         | 1         | Wittenberg                  | 11         | 4         |
| Lorain County            | 1         | 0         | Wooster                     | 9          | 9         |
| Lyndon State             | 2         | 0         | Wright Patterson AFB        | 4          | 0         |
| Madonna                  | 7         | 2         | Wright State                | 8          | 6         |
| Maine-Fort Kent          | 2         | 0         | Xavier                      | 2          | 2         |
| Malloy                   | 1         | 0         | <b>933</b>                  | <b>611</b> |           |
| <b>Malone</b>            | <b>41</b> | <b>17</b> | (61 years - .604)           |            |           |
| Manchester               | 3         | 3         | 2022-23 Opponents in Bold   |            |           |

Highlight of the Game • Sat., Jan. 28 vs Malone



Junior guard Lydia Sweeney recorded a double-double of 12 points and 10 rebounds as the Lady Jacket comeback bid fell short 78-72 to the Malone University Pioneers in a Great Midwest Athletic Conference game on Thursday, January 28 in the Callan Athletic Center. Sweeney added four steals and tied her career-high with three blocked shots. (Photo by Scott Huck)



Follow Stinger on Instagram!!



**cu\_stinger**

**Mom and Dad's Dairy Bar & Grille**

320 N. Main Street  
Cedarville, OH  
**(937)766-2046**  
Offering Game Night  
Specials

**WALLACE & TURNER**  
INSURANCE SINCE 1870

PROUD SUPPORTER OF OUR CEDARVILLE YELLOW JACKETS

Chery Buettell, REALTOR  
GALLERY HOMES REAL ESTATE  
937-815-6682  
cherybuettell.homes@gmail.com

**HISTORIC CLIFTON MILL**  
ESTABLISHED 1802  
**(937) 767-5501**  
75 Water Street  
Clifton, Ohio  
[www.cliftonmill.com](http://www.cliftonmill.com)

**DECIDE** TO MAKE YOUR CAREER COUNT FOR CHRIST WITH A GRADUATE DEGREE FROM CEDARVILLE

**CEDARVILLE UNIVERSITY.**  
THE GRADUATE SCHOOL

Learn More:  
**CEDARVILLE.EDU/GRADUATE**

OVER 226 YEARS OF EXPERIENCE!

**SCREEN Play**  
PRINTING EST. 1984  
937-374-2646

1450 South Patton Street  
Xenia, OH 45385  
email: [scplay@aol.com](mailto:scplay@aol.com)  
[www.screenplayprinting.com](http://www.screenplayprinting.com)

**Cotterman & Company INC.**

Industrial & Commercial Roofing  
[www.CottermanRoofing.com](http://www.CottermanRoofing.com)  
Dayton & Minster, Ohio  
**937-433-8268**



# 2022-23 Cedarville University Women's Basketball



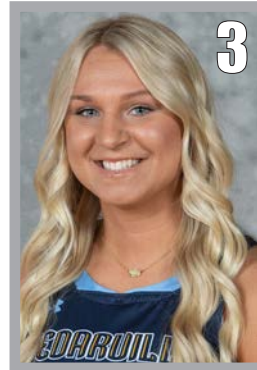
**Lily Moore**  
5-10, Guard  
Freshman  
Corydon, IN

[\\_lillymoore](#)



**Taylor Stacy**  
5-7, Guard  
Sophomore  
Toledo, OH

[taylorstacyy](#)



**Anne Wheeler**  
5-6, Guard  
Junior  
Cincinnati, OH

[akwheels13](#)



**Paige Garr**  
5-9, Guard  
Senior  
Goshen, OH

[paigegarr23](#)



**Taylor Strock**  
5-8, Guard  
Sophomore  
Napoleon, OH

[taystrock](#)



**Leah Butterbaugh**  
5-8, Guard  
Sophomore  
Waynesville, OH

[leah.butterbaugh](#)



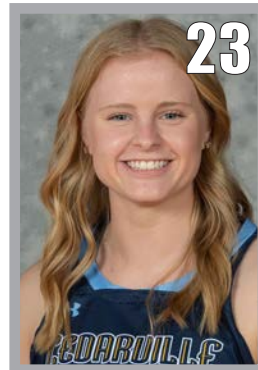
**Abby Freeman**  
5-6, Guard  
Senior  
Delta, OH

[abbyfreeman23](#)



**Makenna Fee**  
6-0 Forward  
Senior  
Seymour, IN

[makennajfee.11](#)



**Lydia Sweeney**  
5-8, Guard  
Junior  
Grand Island, NY

[lydiasweeney](#)



**Ava Boike**  
5-11, Forward  
Freshman  
Flint, MI

[avachase4](#)

Serving Greene County and Surrounding Areas

**CEDARLAND**  
EVENT CENTER

200 Parkview Lane,  
Cedarville  
(near Hearststone Inn)

**BOOKING  
EVENTS NOW!**

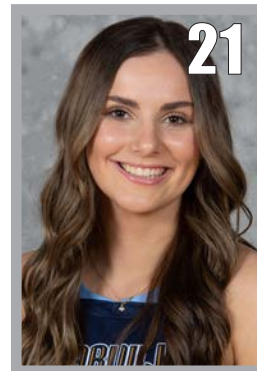
- Banquets • Receptions
- Parties
- Meetings • Auctions

Banquet capacity: 225-250  
**(937) 766-2300**



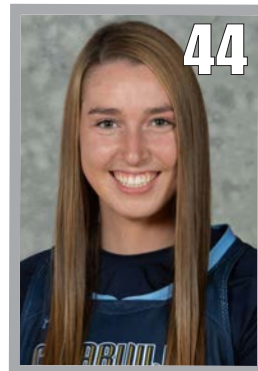
**Anna Landing**  
6-1, Forward  
Sophomore  
Beavercreek, OH

[anna.landing](#)



**Kat Weakley**  
5-9, Guard  
Sophomore  
Westerville, OH

[kat.weak](#)



**Evan Neely**  
6-0, Forward  
Freshman  
Dayton, OH

[evan.neely20](#)

**SHERIDAN & ASSOCIATES** LICENSED REAL ESTATE BROKER, APPRAISER, LLC  
(937) 767-2021  
[www.SheridanTeam.com](#)

**Cedarville's only  
Real Estate,  
Auction &  
Appraisal  
Company**

*We back the  
Jackets all  
the way*

No-fee consultations  
available.

**SHERIDAN & ASSOCIATES** LICENSED REAL ESTATE BROKER, APPRAISER, LLC  
(937) 767-2021  
[www.SheridanTeam.com](#)



**@cujackets**

