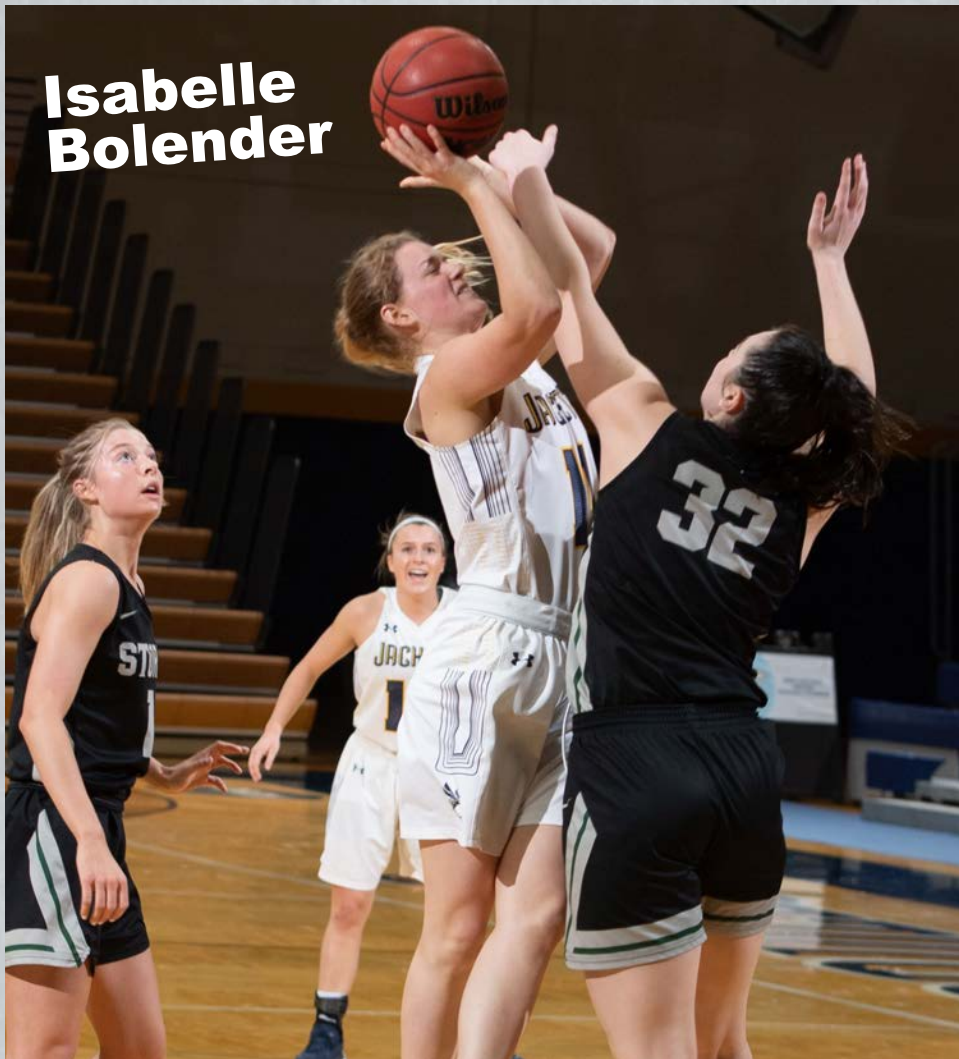


GAMEDAY



Isabelle Bolender

Scan the codes for more....

Lady Jacket basketball info



Arrow basketball info



G-MAC basketball info



LADY JACKETS
VS
URSULINE



SUBWAY
eat fresh.

13 E. Chillicothe St.,
Cedarville, OH

→ 766-7299 ←

"We Back the Jackets!"



#CUJACKETS

SATURDAY • JAN. 30 • 1:00 PM

2020-21 Cedarville University Basketball Statistics

RECORD:	OVERALL	HOME	AWAY	NEUTRAL
ALL GAMES	13-1	6-0	7-1	0-0
CONFERENCE	13-1	6-0	7-1	0-0
NON-CONFERENCE	0-0	0-0	0-0	0-0


#	Player	gp-gs	min	Total		3-Point		F-Throw		Rebounds				pf	dq	a	to	blk	stl	pts	avg	
				fg-fga	fg%	3fg-fga	3fg%	ft-fa	ft%	off	def	tot	avg									
05	Huffman, Ashlyn	14-14	383	27.4	74-160	.463	15-36	.417	47-58	.810	4	72	76	5.4	23	0	82	38	1	24	210	15.0
11	Bolender, Isabelle	14-14	346	24.7	71-139	.511	28-61	.459	21-26	.808	8	57	65	4.6	17	0	14	23	5	13	191	13.6
00	Chapman, Emily	14-9	352	25.1	68-122	.557	27-63	.429	20-28	.714	10	60	70	5.0	25	0	46	12	3	13	183	13.1
24	Mader, Allison	13-13	294	22.6	47-114	.412	15-40	.375	34-45	.756	15	25	40	3.1	24	0	13	22	3	13	143	11.0
04	Garr, Paige	14-6	294	21.0	44-100	.440	25-59	.424	20-23	.870	6	43	49	3.5	21	0	15	16	1	9	133	9.5
03	Wheeler, Anne	14-0	220	15.7	30-71	.423	14-34	.412	24-25	.960	4	19	23	1.6	32	2	14	7	0	15	98	7.0
13	Johnting, Stevie	14-0	202	14.4	25-72	.347	22-62	.355	0-0	.000	1	25	26	1.9	15	0	6	2	1	5	72	5.1
44	Moore, Lexi	14-14	277	19.8	25-46	.543	2-4	.500	19-36	.528	24	41	65	4.6	36	1	11	6	6	15	71	5.1
20	Marshall, Allie	12-0	224	18.7	21-38	.553	0-0	.000	6-10	.600	16	34	50	4.2	32	1	7	6	4	11	48	4.0
12	Freeman, Abby	12-0	144	12.0	13-35	.371	11-28	.393	5-6	.833	0	16	16	1.3	13	0	13	4	2	0	42	3.5
23	Sweeney, Lydia	9-0	64	7.1	8-27	.296	2-11	.182	0-3	.000	4	3	7	0.8	6	0	6	4	1	6	18	2.0
Team											22	27	49				4					
Total.....		14	2800		426-924	.461	161-398	.405	196-260	.754	114	422	536	38.3	244	4	227	144	27	124	1209	86.4
Opponents.....		14	2800		331-869	.381	86-304	.283	193-258	.748	142	410	552	39.4	237	3	158	232	25	75	941	67.2



SPRADLIN BROS. WELDING
 Quality Work Since 1962
937-323-2992
 www.weldedparts.com




Hampton Inn
 Springfield, Ohio
937-325-8480



Germain
 Ford of Beaver Creek
 Minutes Away,
 with an Experience
 Miles Above!



SHERIDAN & ASSOCIATES
 (937) 767-2021
 www.SheridanTeam.com
 We back the Jackets all the way
 Cedarville's only Real Estate, Auction & Appraisal Company
 No-fee consultations available.



Young's Jersey Dairy
 One mile north of Yellow Springs on Route 68
 OPEN 7 AM TO 10 PM EVERY DAY
937-325-0629

2020-21 Ursuline College Basketball Statistics

Record	Overall	Home	Away	Neutral
ALL GAMES	6-7	3-5	3-2	0-0
CONFERENCE	6-7	3-5	3-2	0-0
NON-CONFERENCE	0-0	0-0	0-0	0-0

Team Box Score

No.	Player	GP-GS		MIN		AVG		Total		3-Point		F-Throw		Rebounds				PF	DQ	A	TO	BLK	STL	PTS	AVG
		GP	GS	MIN	AVG	FG-FGA	FG%	3FG-FGA	3FG%	FT-FTA	FT%	OFF	DEF	TOT	AVG										
32	EVANS, Alyssa	13-13	366:45	28.2	49-135	.363	29-83	.349	24-35	.686	13	20	33	2.5	21	0	17	28	2	8	151	11.6			
10	MATTIMORE, Morgan	13-7	361:24	27.8	59-146	.404	17-62	.274	15-27	.556	10	43	53	4.1	27	0	26	33	1	9	150	11.5			
4	GREEN, Bekah	13-13	378:01	29.1	51-96	.531	5-21	.238	37-46	.804	15	23	38	2.9	23	0	33	22	1	12	144	11.1			
5	CLOONAN, Madison	13-13	374:20	28.8	48-94	.511	8-20	.400	21-26	.808	40	67	107	8.2	48	2	23	25	5	14	125	9.6			
1	MATHIS, Tamara	13-7	280:15	21.6	46-131	.351	6-24	.250	14-21	.667	5	40	45	3.5	14	0	34	48	3	10	112	8.6			
20	CLOONAN, Michaela	9-9	248:04	27.6	25-56	.446	14-41	.341	12-16	.750	18	41	59	6.6	32	2	21	18	2	11	76	8.4			
33	MARSH, Aubrie	11-0	123:31	11.2	33-68	.485	0-1	.000	8-14	.571	19	18	37	3.4	24	1	3	16	0	3	74	6.7			
22	SCHEUVRONT, Katrina	9-3	124:20	13.8	20-31	.645	0-0	.000	5-12	.417	10	24	34	3.8	15	0	2	11	15	2	45	5.0			
2	POSPISIL, Emma	10-0	184:24	18.4	16-50	.320	9-33	.273	9-13	.692	1	14	15	1.5	8	0	19	24	2	5	50	5.0			
15	HUFFMAN, Chelsea	3-0	35:48	11.9	4-9	.444	0-1	.000	0-0	.000	4	7	11	3.7	4	0	3	2	0	1	8	2.7			
23	KONCZ, Celina	5-0	49:19	9.9	4-12	.333	3-7	.429	0-2	.000	5	9	14	2.8	6	0	1	0	0	1	11	2.2			
3	ASHAOLU, Patience	9-0	62:02	6.9	3-14	.214	2-8	.250	4-4	1.000	4	14	18	2.0	5	0	2	3	1	1	12	1.3			
12	JENKINS, Sam	4-0	11:48	3.0	1-3	.333	0-1	.000	1-2	.500	0	2	2	0.5	1	0	0	0	0	1	3	0.8			
Team											18	13	31				3								
Total		13	2600		359-845	.425	93-302	.308	150-218	.688	162	335	497	38.2	228	5	184	233	32	78	961	73.9			
Opponents		13	2599		389-862	.451	103-283	.364	150-219	.685	138	332	470	36.2	220	2	212	198	36	134	1031	79.3			

Cedarville University "Lady Jackets" (13-1, 13-1)

HEAD COACH: KARI HOFFMAN (5th year, 100-33, .752)
 ASST. COACHES: JOHN LEONZO, STEPHEN BUETTLELL, ABBY WOLFORD, JIMMY HOFFMAN

LocationCedarville, OH Enrollment4,550
 Founded1887 AffiliationNCAA II, NCCAA I



No	Player	Pos	Ht	Yr	Hometown	3-Pt. FG	2-Pt. FG	Free Throws	Fouls	3FG	2FG	FT	TP
0	Emily Chapman	G	5-5	Jr	Proctorville, OH	3333333	22222222222	11111111111	12345				
3	Anne Wheeler	G	5-7	Fr	Cincinnati, OH	3333333	22222222222	11111111111	12345				
4	Paige Garr	G	5-9	So	Goshen, OH	3333333	22222222222	11111111111	12345				
5	Ashlyn Huffman	G	5-6	Sr	Columbus, IN	3333333	22222222222	11111111111	12345				
11	Isabelle Bolender	G	5-9	So	Cedarville, OH	3333333	22222222222	11111111111	12345				
12	Abby Freeman	G	5-6	So	Delta, OH	3333333	22222222222	11111111111	12345				
13	Stevie Johnting	G	5-9	Sr	Arcanum, OH	3333333	22222222222	11111111111	12345				
20	Allie Marshall	F	5-11	So	Proctorville, OH	3333333	22222222222	11111111111	12345				
23	Lydia Sweeney	G	5-8	Fr	Grand Island, NY	3333333	22222222222	11111111111	12345				
24	Allison Mader	G	5-7	Jr	Tipp City, OH	3333333	22222222222	11111111111	12345				
44	Lexi Moore	F	5-10	Jr	Beavercreek, OH	3333333	22222222222	11111111111	12345				
						3333333	22222222222	11111111111	12345				
						3333333	22222222222	11111111111	12345				
						3333333	22222222222	11111111111	12345				
						3333333	22222222222	11111111111	12345				
						3333333	22222222222	11111111111	12345				

OVER 226 YEARS OF EXPERIENCE!

SCREEN Play
 PRINTING EST. 1984
 937-374-2646

1450 South Patton Street
 Xenia, OH 45385
 email: scplay@aol.com
 www.screenplayprinting.com

Germain
 Ford of Beavercreek

Minutes Away,
 with an Experience
 Miles Above!

BUILT Ford PROUD

Hampton Inn

Springfield,
 Ohio
 937-325-8480

Cotterman & Company INC.
 INDUSTRIAL & COMMERCIAL ROOFING

www.CottermanRoofing.com
 Dayton & Minster, Ohio
 937-433-8268

Learn God's Word.
 Live God's Way.
 Light God's World.

GRACE
 BAPTIST CHURCH
 CEDARVILLE, OHIO
 www.gracedarville.org

Ursuline College "Arrows" (6-7, 6-7)

HEAD COACH: SHANNON SWORD (9th year, 125-116, .519)
 ASSISTANT COACH: KYLIE FRIZELL

LocationPepper Pike, OH Enrollment1,500
 Founded1871 AffiliationNCAA II



No	Player	Pos	Ht	Yr	Hometown	3-Pt. FG	2-Pt. FG	Free Throws	Fouls	3FG	2FG	FT	TP
1	Tamara Mathis	G	5-8	So	Canonsburg, PA	3333333	22222222222	11111111111	12345				
2	Emma Posposill	G	5-5	Fr	Sarver, PA	3333333	22222222222	11111111111	12345				
3	Patience Ashaolu	G	5-8	So	Clinton, PA	3333333	22222222222	11111111111	12345				
4	Bekah Green	G	5-7	Jr	Jackson, OH	3333333	22222222222	11111111111	12345				
5	Madison Cloonan	G	5-10	Fr	Kirtland, OH	3333333	22222222222	11111111111	12345				
10	Morgan Mattimore	G	5-9	Sr	Delta, OH	3333333	22222222222	11111111111	12345				
12	Sam Jenkins	G	5-8	Sr	Gahanna, OH	3333333	22222222222	11111111111	12345				
15	Chelsea Huffman	G/F	5-11	Fr	Cuyahoga Falls, OH	3333333	22222222222	11111111111	12345				
20	Michaela Cloonan	F	5-10	Fr	Kirtland, OH	3333333	22222222222	11111111111	12345				
22	Katrina Scheuvront	F	6-4	Sr	Thornville, OH	3333333	22222222222	11111111111	12345				
23	Celina Koncz	F	6-0	Fr	Doylestown, OH	3333333	22222222222	11111111111	12345				
32	Alyssa Evans	G	5-9	So	Amanda, OH	3333333	22222222222	11111111111	12345				
33	Aubrie Marsh	F	6-0	So	Medina, OH	3333333	22222222222	11111111111	12345				
						3333333	22222222222	11111111111	12345				
						3333333	22222222222	11111111111	12345				
						3333333	22222222222	11111111111	12345				

2020-21 Cedarville University Women's Basketball



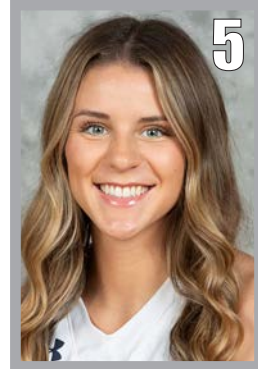
Emily Chapman
5-5, Guard
Junior
Proctorville, OH
[@emily_chapman](#)



Anne Wheeler
5-7, Guard
Freshman
Cincinnati, OH



Paige Garr
5-9, Guard
Sophomore
Goshen, OH
[@paigegarr](#)



Ashlyn Huffman
5-6, Guard
Senior
Columbus, IN



Isabelle Bolender
5-9, Guard
Sophomore
Cedarville, OH



Abby Freeman
5-6, Guard
Sophomore
Delta, OH
[@abbyfreeman23](#)



Stevie Johnting
5-9, Guard
Senior
Arcanum, OH
[@Sjohnting](#)



Allie Marshall
5-11, Forward
Sophomore
Proctorville, OH
[@alliemarsha11](#)



Lydia Sweeney
5-8, Guard
Freshman
Grand Island, NY
[@LydiaSweeney02](#)

 Serving Greene County and Surrounding Areas

CEDARLAND
EVENT CENTER

200 Parkview Lane, Cedarville
(near Hearststone Inn)

BOOKING EVENTS NOW!
Banquets • Receptions • Parties Meetings • Auctions
Banquet capacity: 225-250

(937) 766-2300



Allison Mader
5-7, Guard
Junior
Tipp City, OH
[@_allisonmader](#)



Lexi Moore
5-10, Forward
Junior
Beavercreek, OH
[@leximoore](#)

Mom and Dad's Dairy Bar & Grille

320 N. Main Street
Cedarville, OH
(937)766-2046
Offering Game Night Specials

 Fresh Pure Chemical Free Drinking Water

Free Delivery Home & Office
1-800-800-8124
Complimentary Trial Offer
• Cooler & Dispenser
• Sales & Rental
www.aquafallswater.com

Meeting needs, changing lives

 **SEND Relief**
SendRelief.org

1-833-SENDOPE
(833)736-3467



[@cujackets](#)

