

# BRIDGES AND BANDITS ON THE ROAD TO THE NEW JERUSALEM

A Study of the Correlation Between Immigration and Terrorism

# TRUMP'S IMMIGRATION ORDER

➤ “Protecting the Nation From Foreign Terrorist Entry Into the United States.”

➤ Religious Discrimination?

➤ Islamophobia?

Is there any link between immigration and terrorism?

# LITERATURE REVIEW

Colette G. Mazzucelli, “Secular States in a “Security Community”: The Migration-Terrorism Nexus?” (2016)

- Much evidence is anecdotal
- Many Connections are Fabricated

# LITERATURE REVIEW

María Soledad Saux. "Immigration and Terrorism: A Constructed Connection." (2007)

- Increases in Immigration and Terrorism are not Contemporaneous
- Restricting Immigration May be an End Itself

Mary De Ming Fan, "The Immigration-Terrorism Illusory Correlation and Heuristic Mistake," (2007)

- The Perception of Terrorism is Greater than the Reality

# LITERATURE REVIEW

Jozsef Kis-Benedek. “Illegal Immigration and Terrorism” (2016)

- Terrorist Groups can Use Migration to Send Operatives
- Social Media Offers a Door for Recruitment in Host Countries

Robert Nicholson. “Swedish Open Immigration Policies - Correlation with Terrorism.” (2010)

- Rinkeby, Sweden Serves as a Prime Recruiting Area for Shebab
- Immigrants either Ostracized or Perceive Themselves to be so, Thus, No Assimilation

# LITERATURE REVIEW

Vincenzo Bove and Tobias Bohmelt. “Does Immigration Induce Terrorism?” (2016)

- Migration is a Means for the Spread of Terrorism
- Immigrants Serve as Physical Link

# HYPOTHESIS

As countries receive increased levels of asylum seekers from terror-prone nations, they will experience an increase in the number of terror attacks.

# METHODOLOGY

## Six Countries Studied:

- Germany
- Turkey
- Greece
- United States
- Canada
- Australia

## Based on:

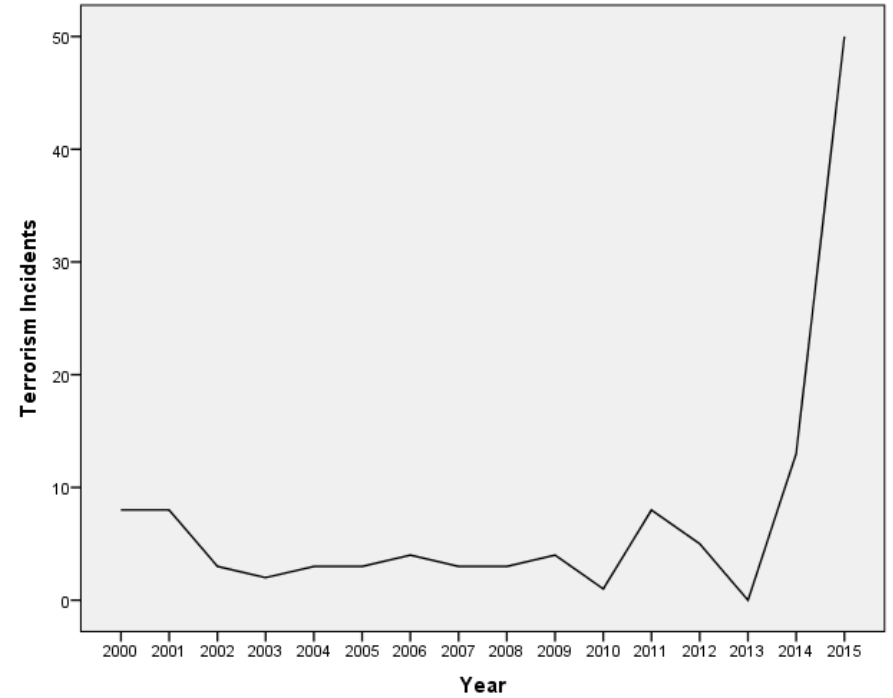
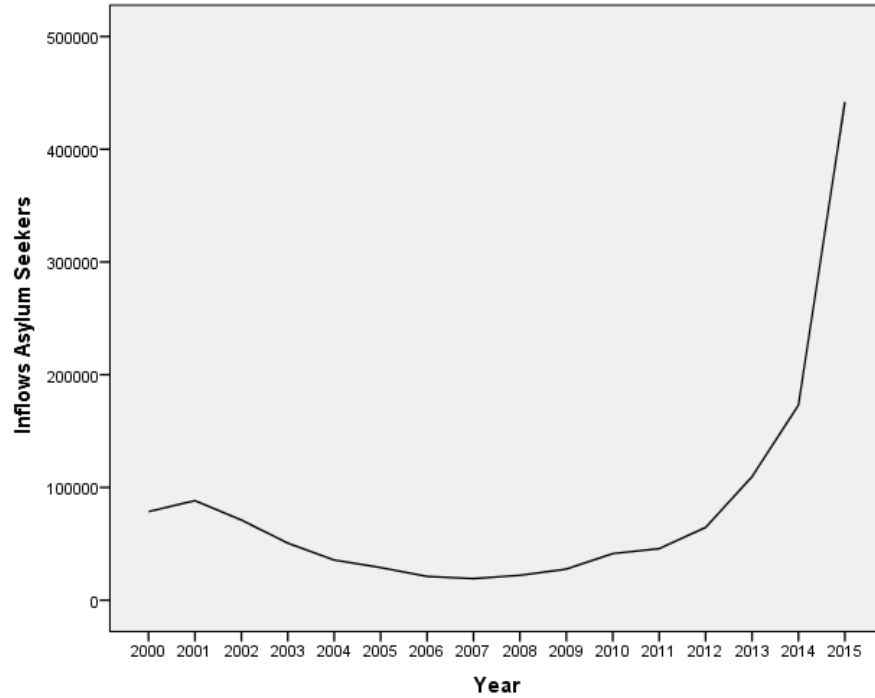
- Immigration policies
- Proximity to terror prone countries
- Popularity as the country of destination for immigrants



# SOURCES

- Inflows of Immigrants: International Migration Database of the Organization for Economic Co-operation and Development
- Terrorist Instances: Global Terrorism Database

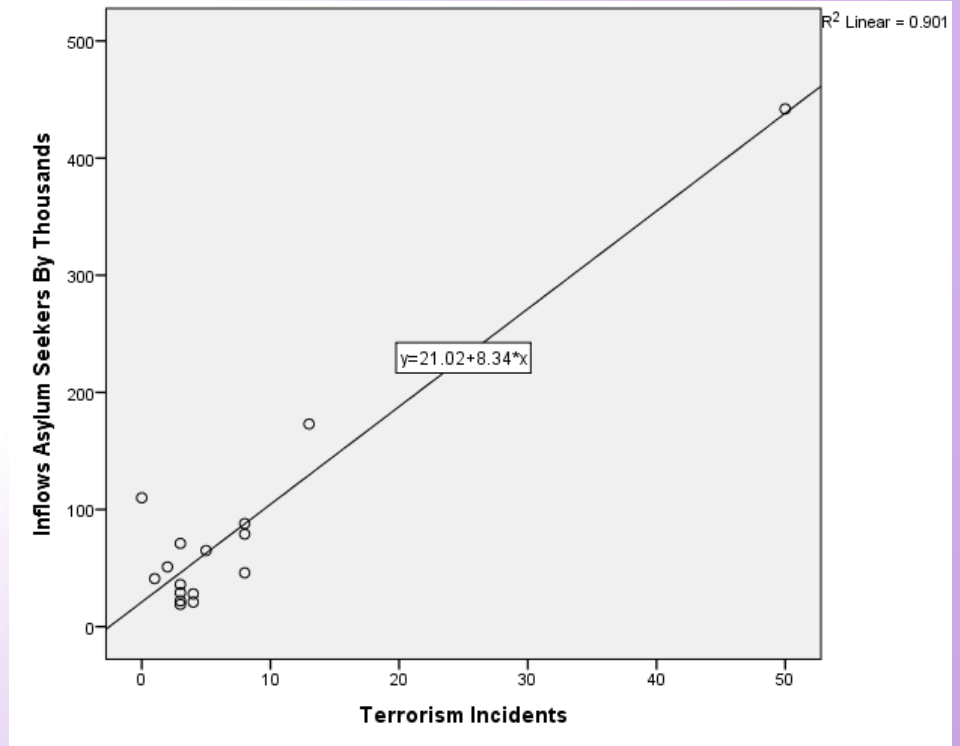
# GERMANY



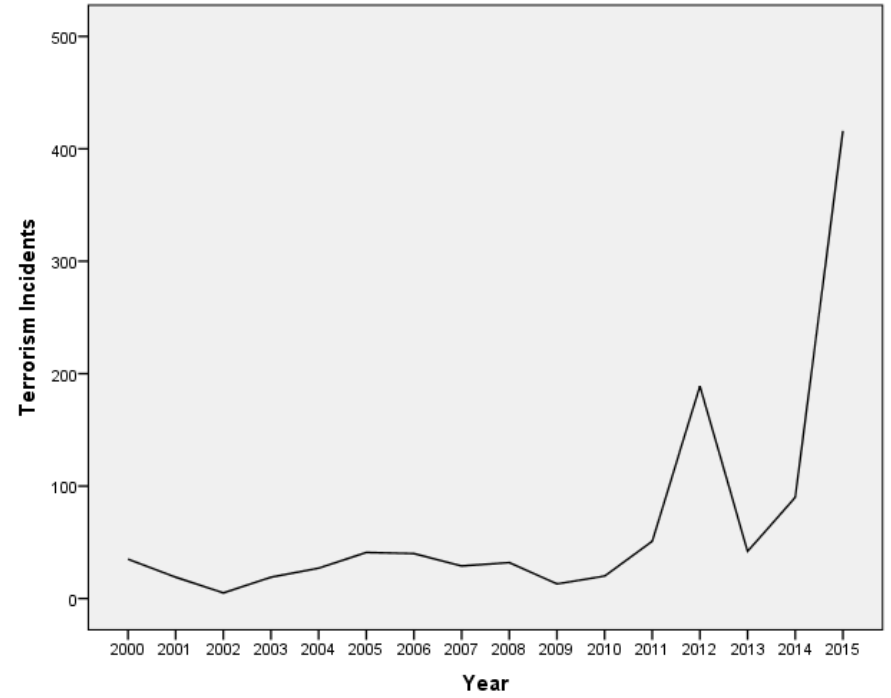
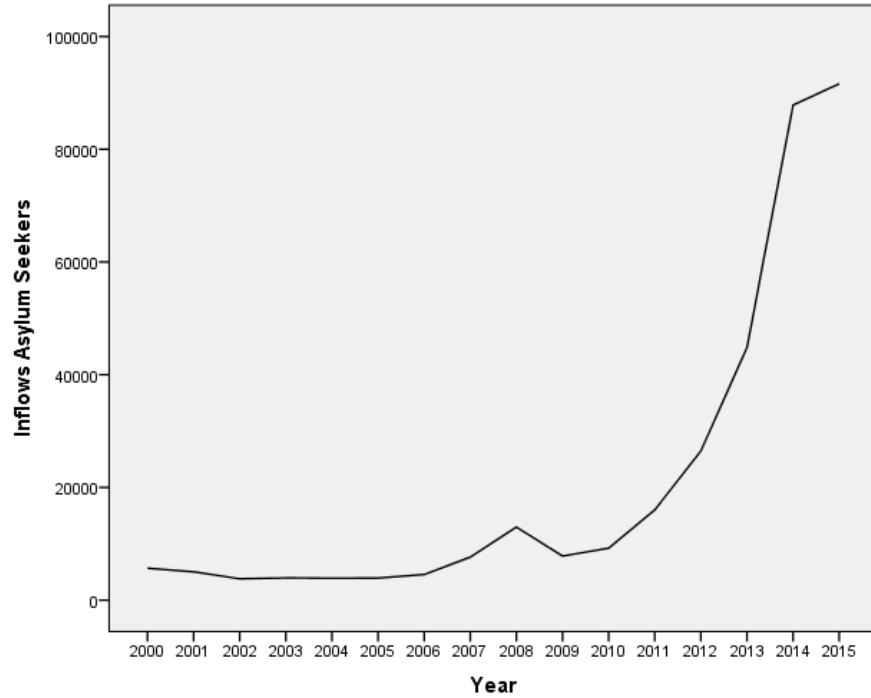
# GERMANY

$R^2 = .901$ , Strong Correlation.

90% of the incidence of terrorism can be explained by inflows of asylum seekers.



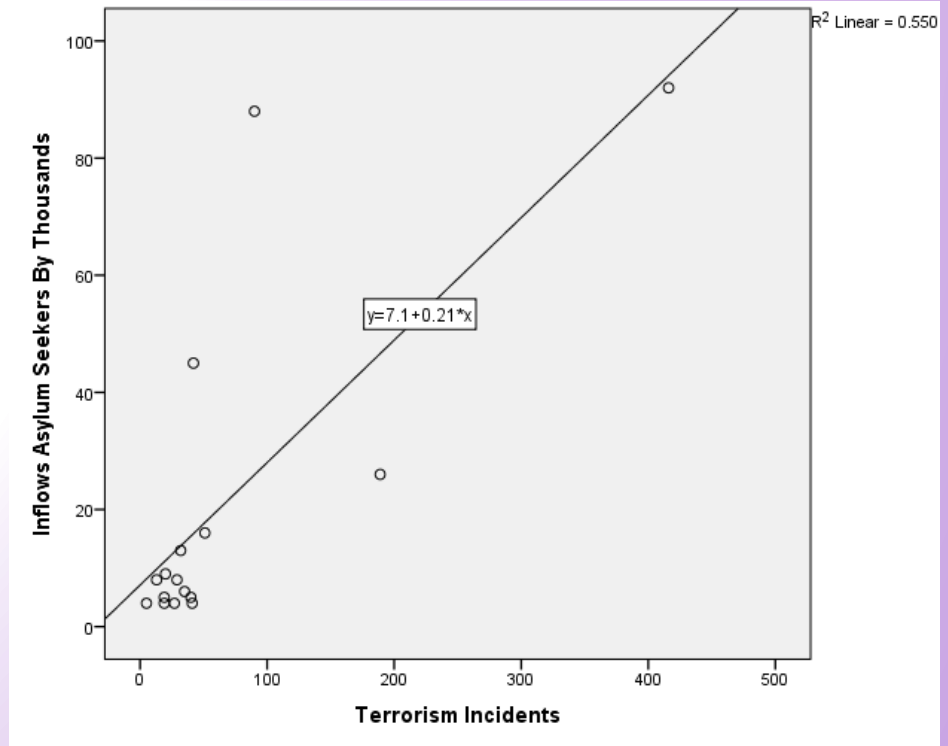
# TURKEY



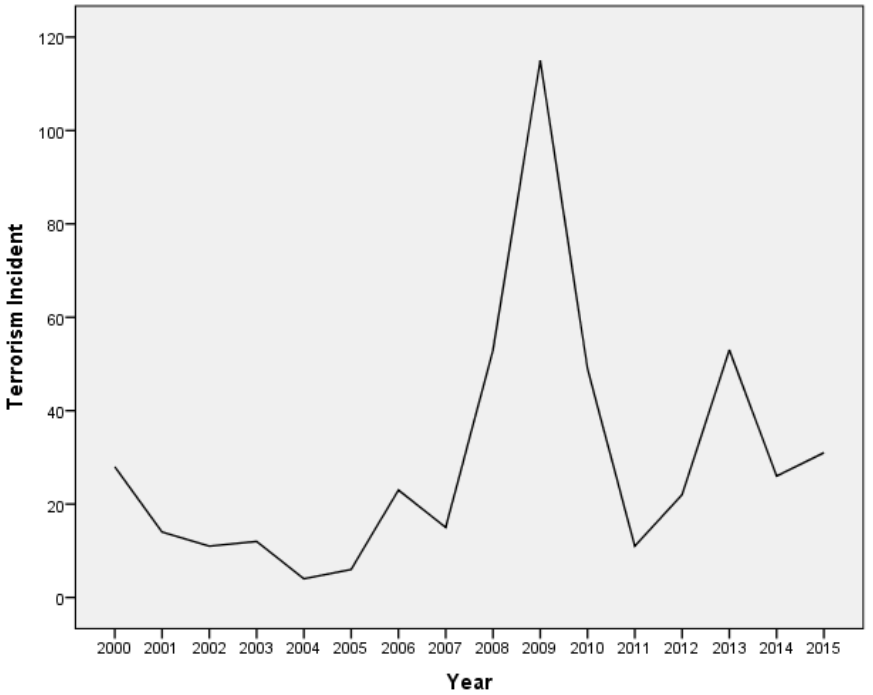
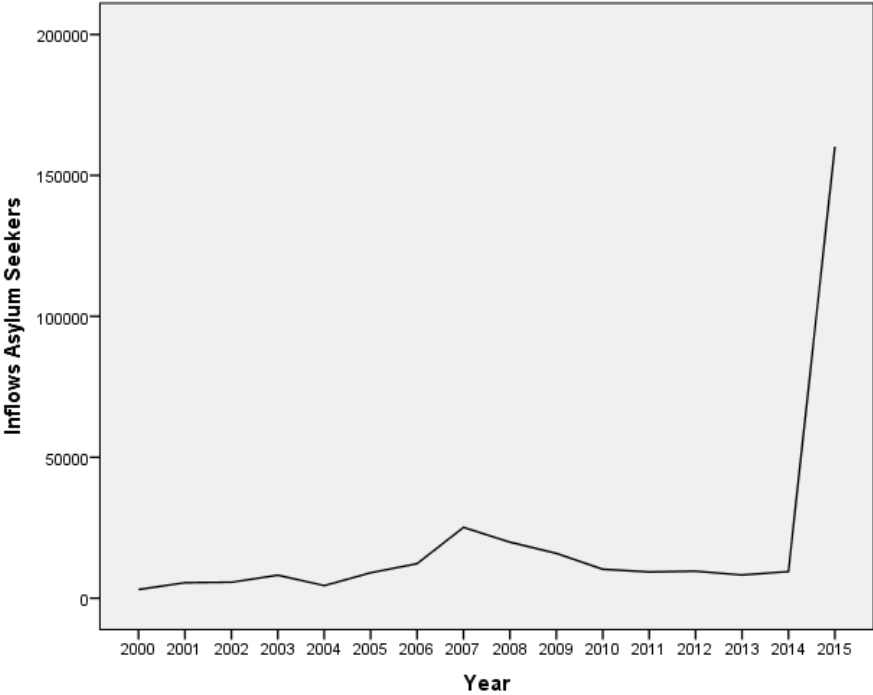
# TURKEY

$R^2 = .55$ , Moderate Correlation.

55% of terrorism is explained or predicted by inflows of asylum seekers.



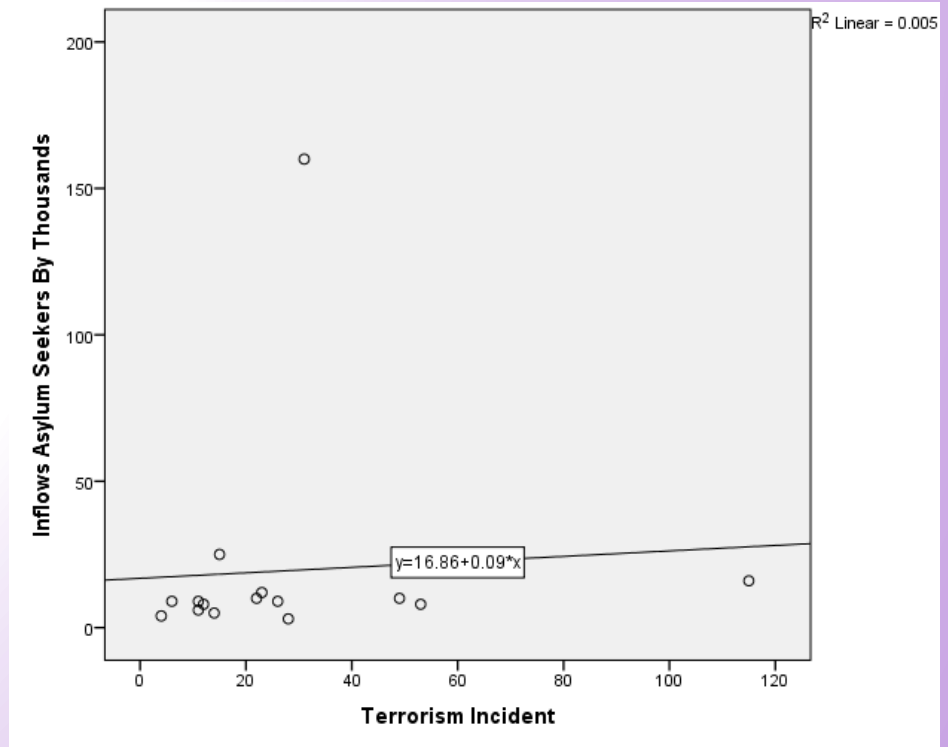
# GREECE



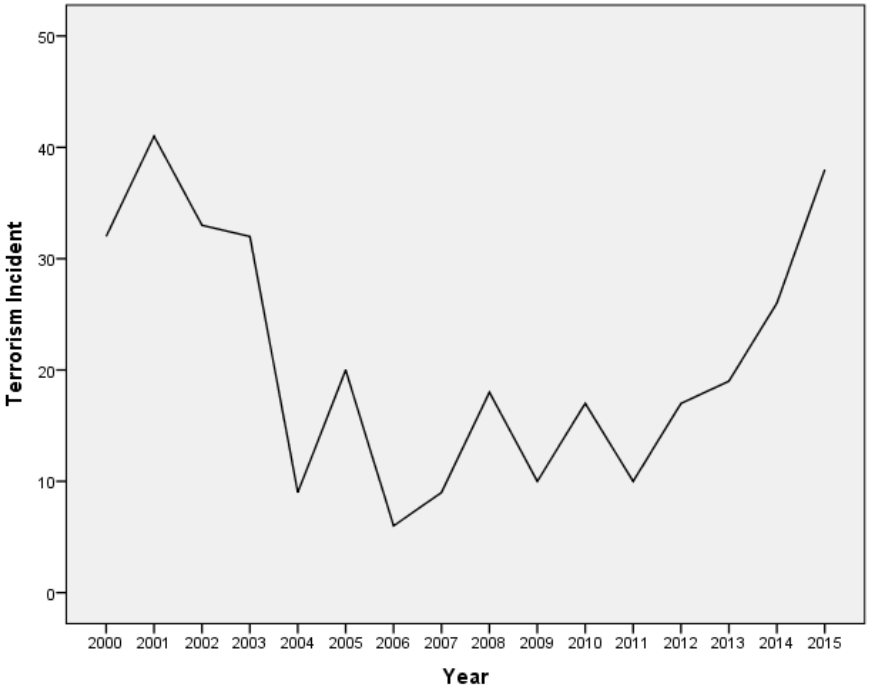
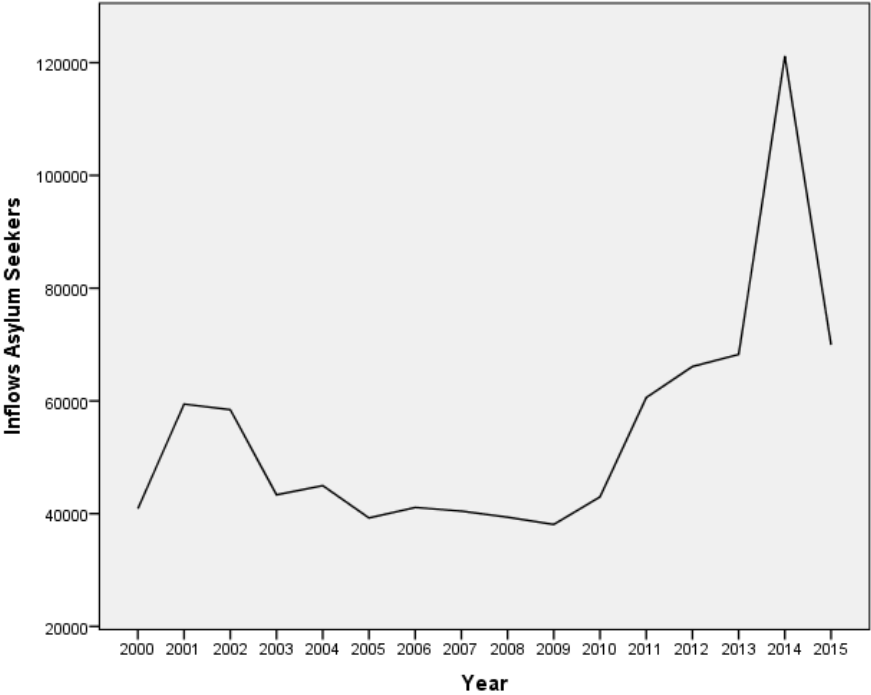
# GREECE

$R^2 = .0005$ , Weak Correlation.

Internally terror-prone, immigration impact masked as a result.



# UNITED STATES OF AMERICA

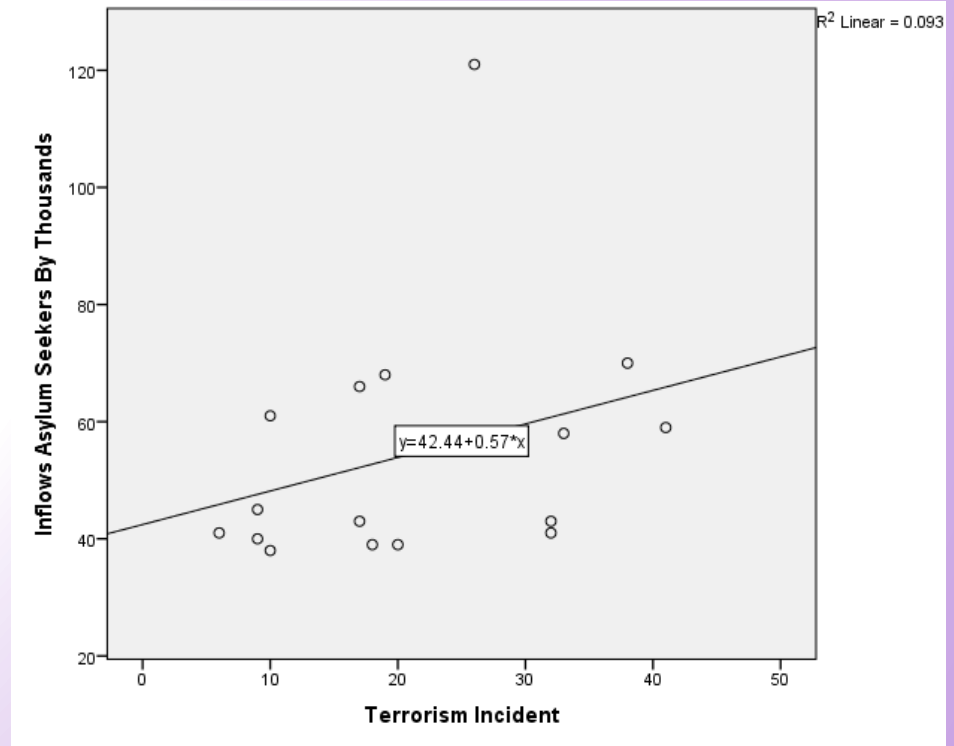




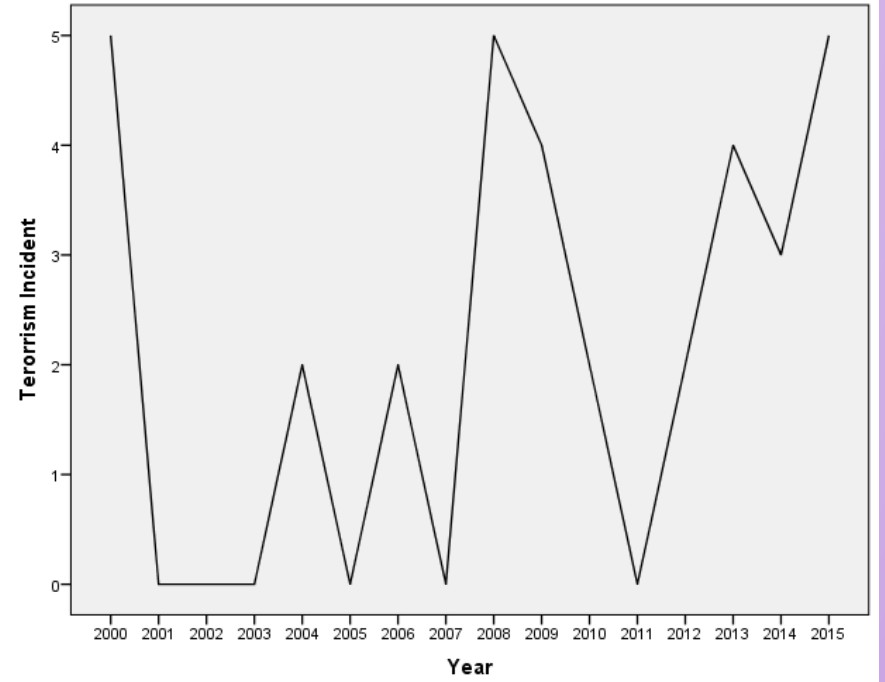
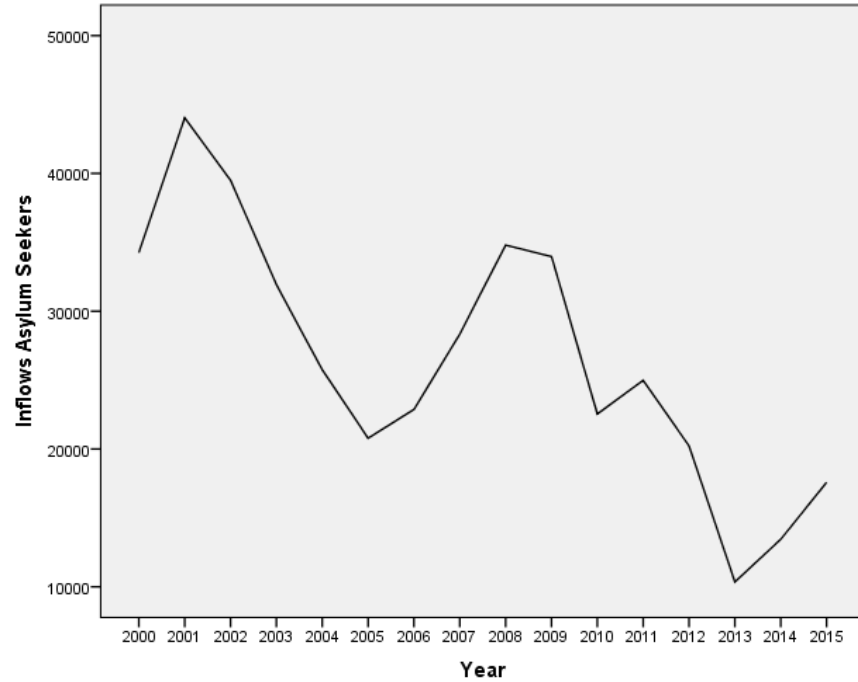
# UNITED STATES OF AMERICA

$R^2 = .093$ , Weak Correlation.

The United States is an outlier due to distance, strict refugee vetting, and unique draw for terrorism.



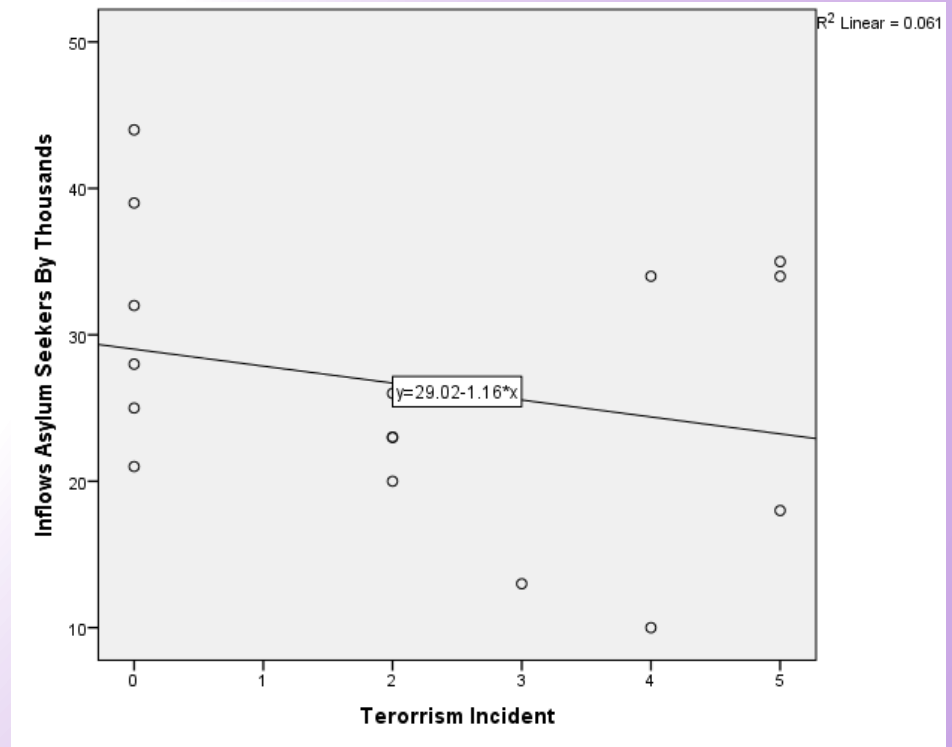
# CANADA



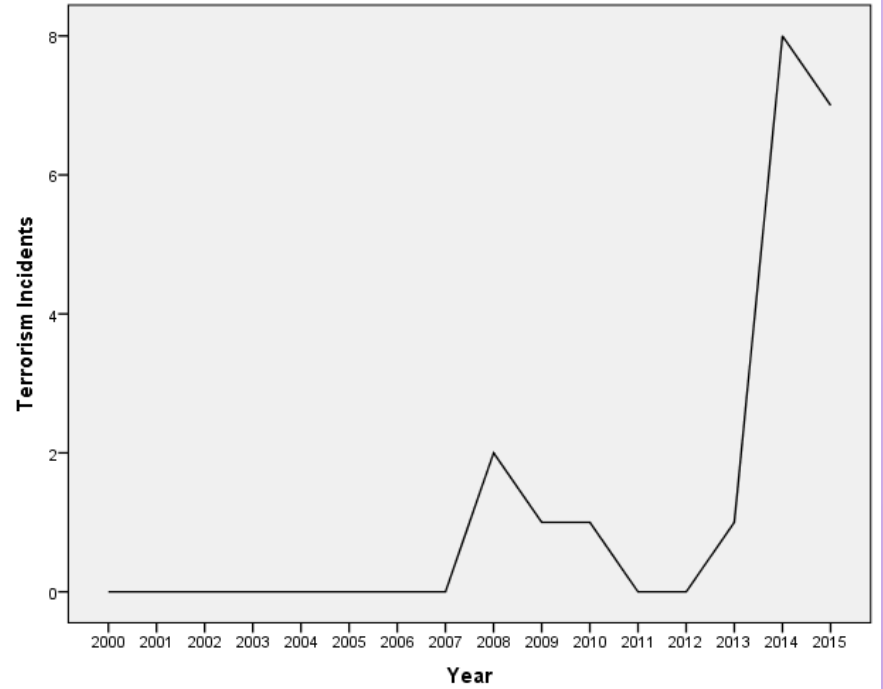
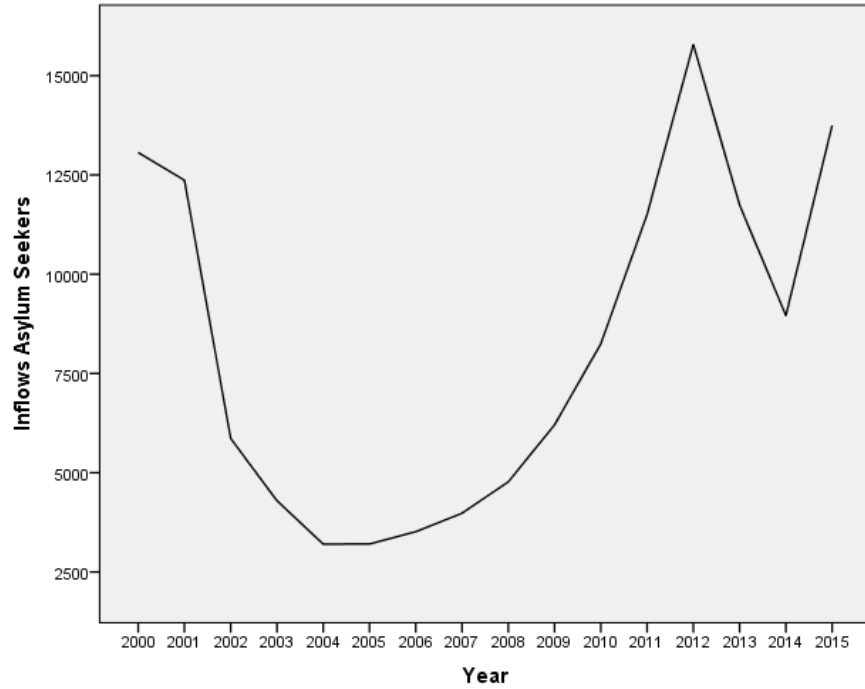
# CANADA

$R^2 = .061$ , Weak Negative Correlation.

Low terror-prone immigration, absolute immigration alone does not predict terrorism.



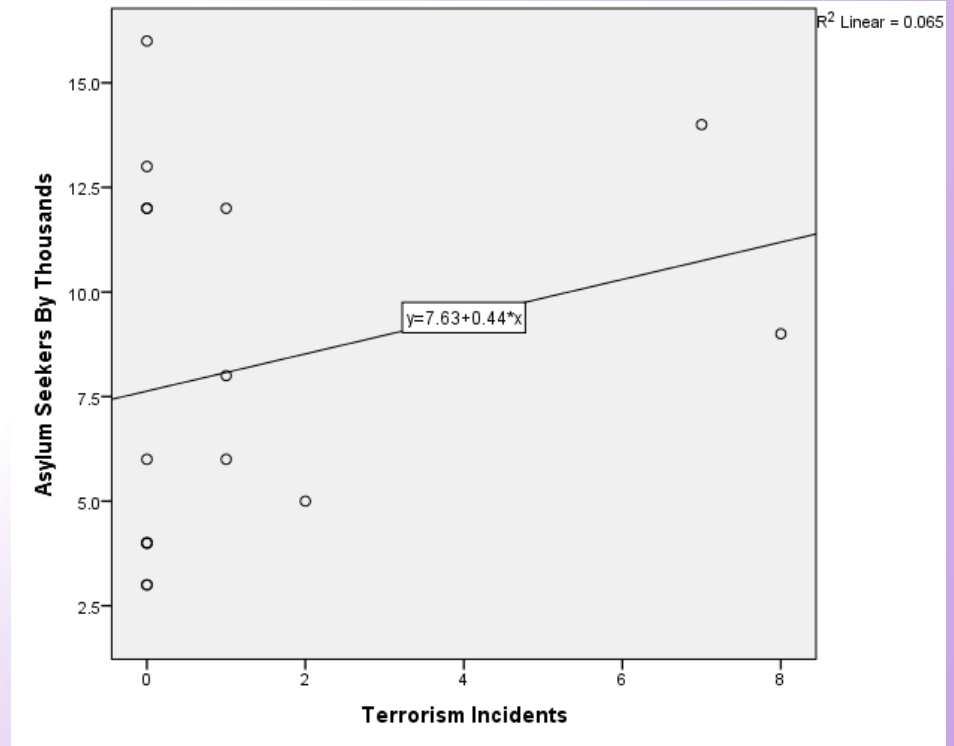
# AUSTRALIA



# AUSTRALIA

$R^2 = .065$ , Weak Correlation.

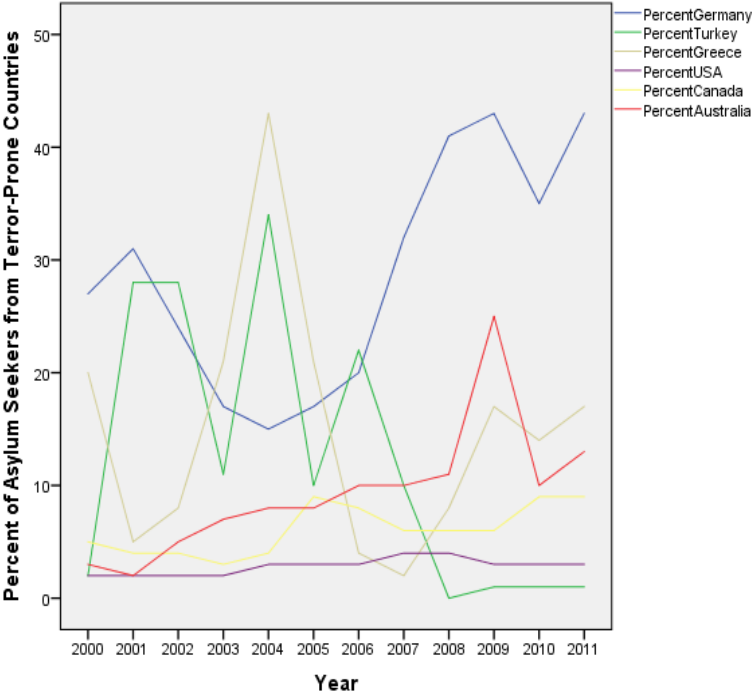
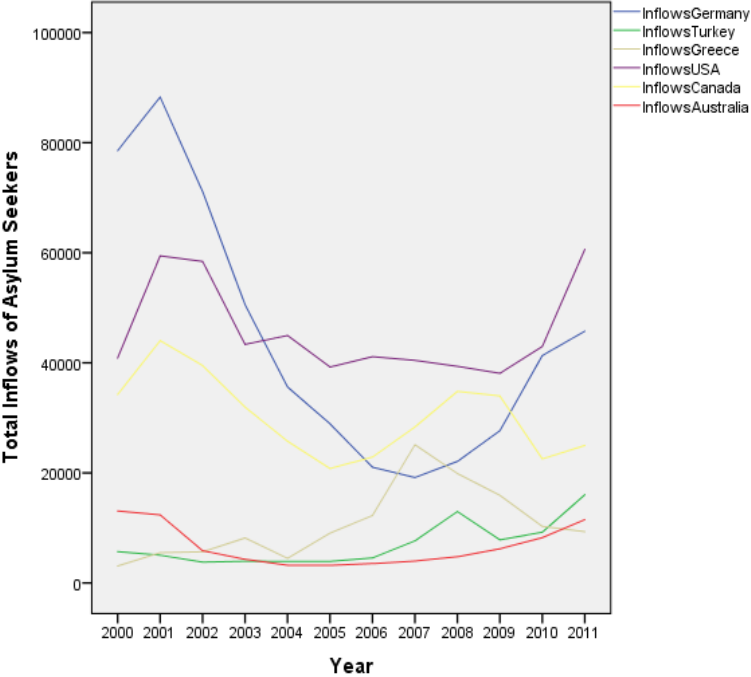
Too few incidents of terrorism for meaningful conclusions.



# SUMMARY

- Germany and Turkey - strong linear relationship
  - Germany - 90% of the variance in terrorism incidents can be explained by the inflows of asylum seekers
  - Turkey - 55% of the variance in terrorism incidents can be explained by the inflows of asylum seekers
- What about immigration from terror-prone countries? (Iraq, Afghanistan, Nigeria, Pakistan, and Syria)

# POTENTIAL FUTURE RESEARCH



# CONCLUSION

Increased migration from terror-prone nations and regions is linked to increased terrorism

- Germany indicates that migration from terror-prone areas is a strong indicator of a rise in terrorist incidents.
- Turkey indicates that immigration does not present a holistic picture.
- Canada indicates that immigration in general is not linked to terrorism.



# CREDITS

Research prepared by Ethan Beck, Unix Diza, Jana Minich, and Amy Searl

Presented by Amy Searl and Stanley Schwartz

# QUESTIONS